

WAAS CH 97701 W10A	APP CRS 100°	Rwy Idg TDZE Apt Elev	5004 857 868
--	------------------------	-----------------------------	---

RNAV (GPS) RWY 10

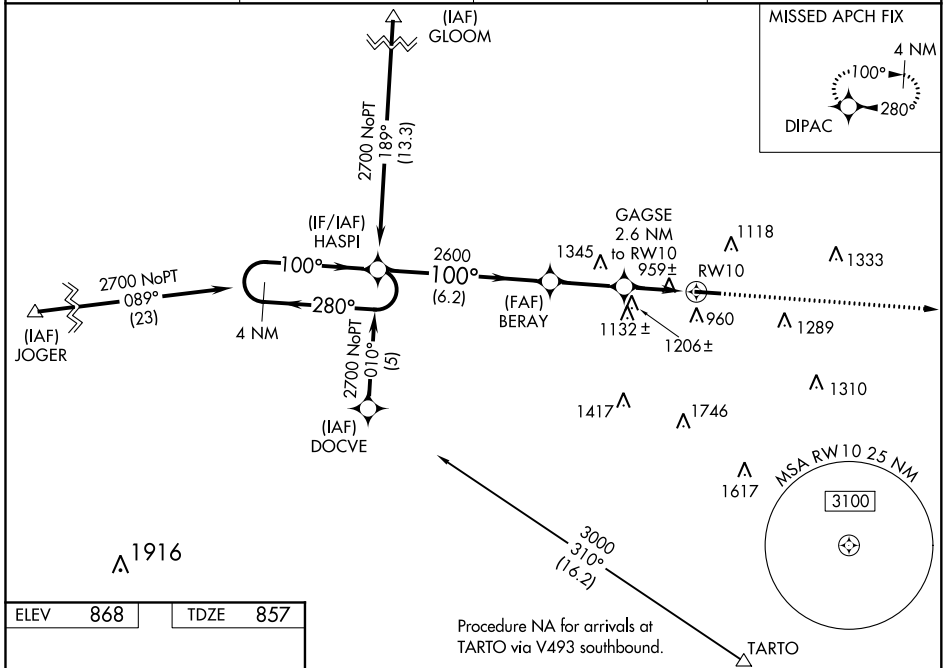
FAIRFIELD COUNTY (LHQ)

RNP APCH.

Baro-VNAV and VDP NA when using Rickenbacker Intl altimeter setting. For uncompensated Baro-VNAV systems, LNAV/VNAV NA below -16°C or above 54°C. When local altimeter setting not received, use Rickenbacker Intl altimeter setting and increase all DAs 48 feet, and all MDAs 60 feet, and increase LPV, LNAV/VNAV all Cats and Circling Cat C visibility ¼ mile. Rwy 10 helicopter visibility reduction below ¾ SM NA.

MISSED APPROACH:
Climb to 2800 direct
DIPAC and hold.

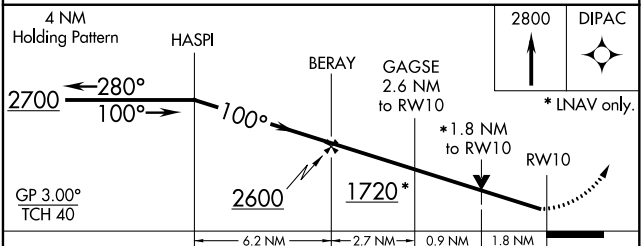
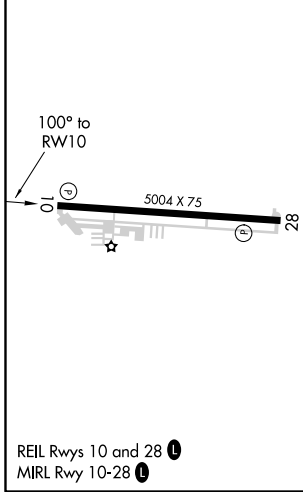
ASOS 118.375	COLUMBUS APP CON 134.0 279.6	CLNC DEL 121.65	UNICOM 122.725 (CTAF)
------------------------	--	---------------------------	---------------------------------



EC-2, 05 NOV 2020 to 03 DEC 2020

EC-2, 05 NOV 2020 to 03 DEC 2020

ELEV	868	TDZE	857
------	-----	------	-----



CATEGORY	A	B	C	D
LPV DA	1170-1 313 (400-1)			NA
LNAV/VNAV DA	1291-1 ½ 434 (500-1 ½)			NA
LNAV MDA	1460-1	603 (600-1)	1460-1 ¾ 603 (600-1 ¾)	NA
CIRCLING	1520-1 652 (700-1)	1540-1 672 (700-1)	1560-2 692 (700-2)	NA

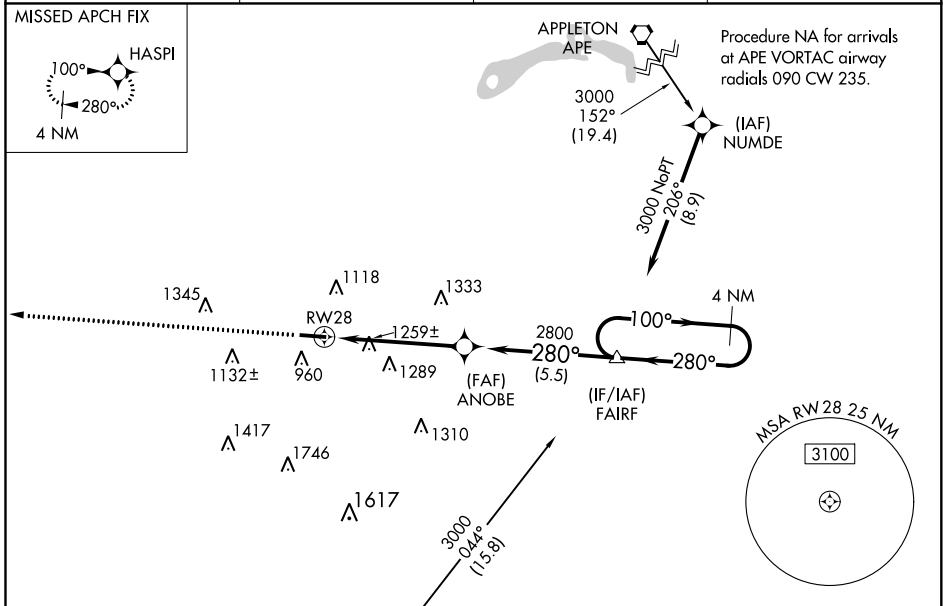
WAAS CH 69628 W28A	APP CRS 280°	Rwy Idg TDZE Apt Elev	5004 868 868
--	------------------------	-----------------------------	---

RNAV (GPS) RWY 28

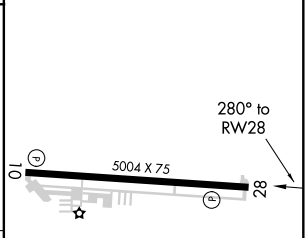
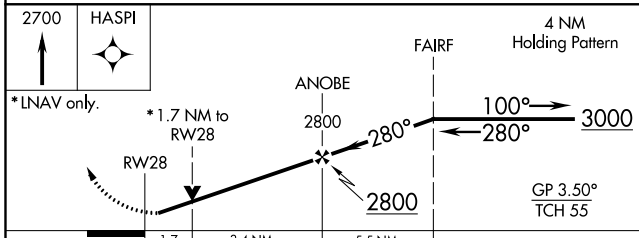
FAIRFIELD COUNTY (L.H.Q.)

RNP APCH.	<p>▼ Baro-VNAV NA when using Rickenbacker Intl altimeter setting. For uncompensated Baro-VNAV systems, LNAV/VNAV NA below -24°C or above 54°C. Rwy 28 helicopter visibility reduction below ¾ SM NA. VDP NA with Rickenbacker Intl altimeter setting. When local altimeter setting not received, use Rickenbacker Intl altimeter setting and increase all DA 48 feet; increase all MDA 60 feet.</p>	MISSED APPROACH: Climb to 2700 direct HASPI and hold.
-----------	---	--

ASOS 118.375	COLUMBUS APP CON 134.0 279.6	CLNC DEL 121.65	UNICOM 122.725 (CTAF)
------------------------	--	---------------------------	---------------------------------



ELEV	868	TDZE	868
------	-----	------	-----



CATEGORY	A	B	C	D
LPV DA	1068-¾	200 (200-¾)		NA
LNAV/VNAV DA	1641-2½	773 (800-2½)		NA
LNAV MDA	1520-1	652 (700-1)		NA
CIRCLING	1520-1 652 (700-1)	1540-1 672 (700-1)		NA

REIL Rwy 10 and 28
MIRL Rwy 10-28

EC-2, 05 NOV 2020 to 03 DEC 2020

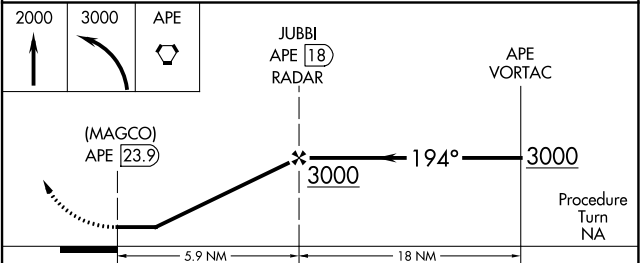
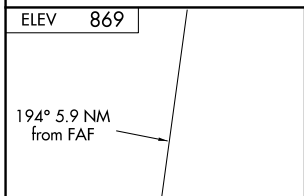
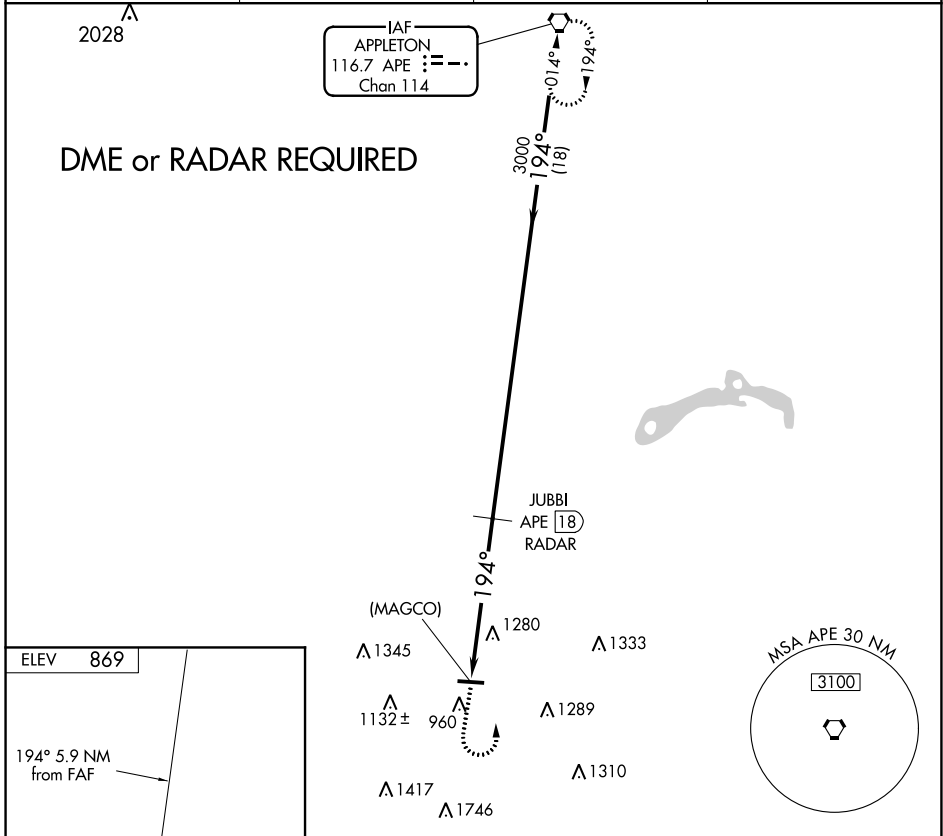
EC-2, 05 NOV 2020 to 03 DEC 2020

VORTAC APE 116.7 Chan 114	APP CRS 194°	Rwy Idg TDZE Apt Elev	N/A N/A 869
---	------------------------	-----------------------------	--

VOR or GPS-A
FAIRFIELD COUNTY (L.H.Q)

<p>▼</p> <p>▲ NA</p>	<p>MISSED APPROACH: Climb to 2000, then climbing left turn to 3000 direct APE VORTAC and hold.</p>		
----------------------	--	--	--

ASOS 118.375	COLUMBUS APP CON 134.0 279.6	CLNC DEL 121.65	UNICOM 122.725 (CTAF) 0
------------------------	--	---------------------------	--



REIL Rwys 10 and 28 **0**

MIRL Rwy 10-28 **0**

FAF to MAP 5.9 NM	
Knots	60 90 120 150 180
Min:Sec	5:54 3:56 2:57 2:22 1:58

CATEGORY	A	B	C	D
CIRCLING	1580-1 711 (800-1)	1580-1¼ 711 (800-1¼)	1640-2¼ 771 (800-2¼)	NA