

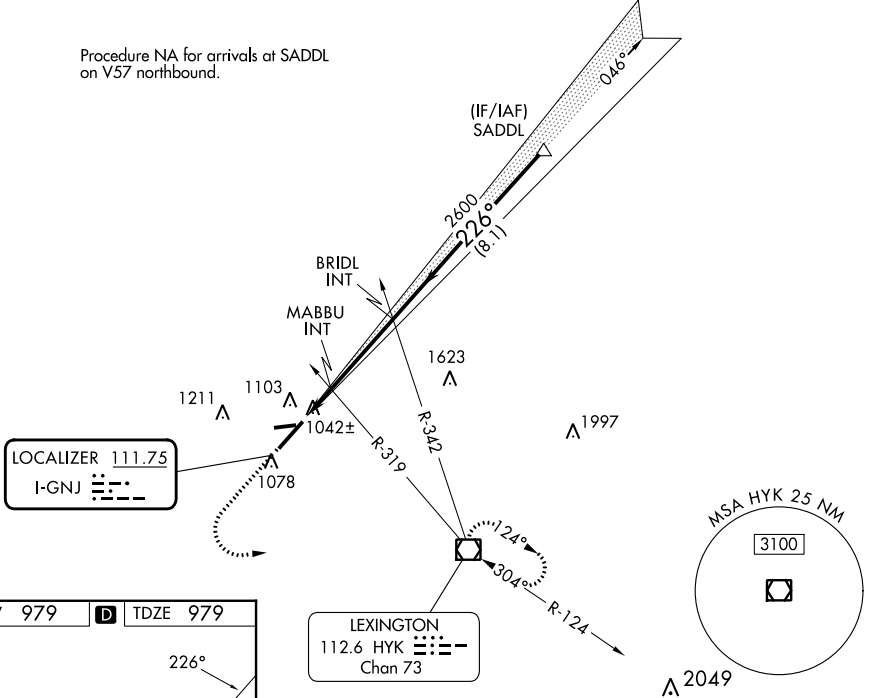
LOC I-GNJ 111.75	APP CRS 226°	Rwy Idg TDZE Apt Elev	6604 979 979
----------------------------	------------------------	-----------------------------	---

ILS or LOC RWY 22

BLUE GRASS (LEX)

<p>⚠ When local altimeter setting not received, use Frankfort altimeter setting: increase S-ILS 22 DA to 1241 feet and all visibilities $\frac{1}{8}$ SM; increase all MDAs 80 feet and visibility Cats C and D $\frac{1}{4}$ SM.</p> <p>⚠ MISSED APPROACH: Climb to 1400 then climbing left turn to 3100 direct HYK VOR/DME and hold, continue climb-in-hold to 3100.</p>				
ATIS 126.3	LEXINGTON APP CON 120.15 259.3 (040°-220°) 120.75 298.9 (221°-039°)	LEXINGTON TOWER 119.1 257.8	GND CON 121.9	CLNC DEL 132.35

Procedure NA for arrivals at SADDL on V57 northbound.



SE-1, 22 FEB 2024 to 21 MAR 2024

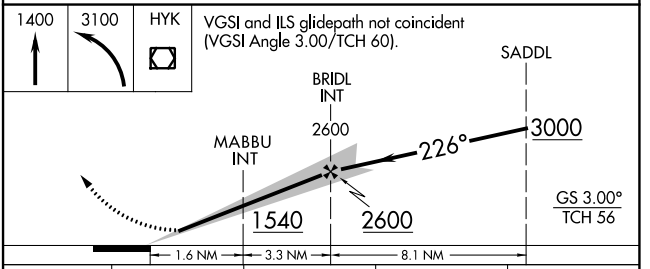
SE-1, 22 FEB 2024 to 21 MAR 2024

ELEV 979	D	TDZE 979
----------	----------	----------

TDZ/CL Rwy 4
REIL Rwys 9, 22 and 27
HIRL Rwy 4-22
MIRL Rwy 9-27

FAF to MAP 4.9 NM

Knots	60	90	120	150	180
Min:Sec	4:54	3:16	2:27	1:58	1:38



CATEGORY	A	B	C	D
S-ILS 22	1179- $\frac{3}{4}$ 200 (200- $\frac{3}{4}$)			
S-LOC 22	1360-1	381 (400-1)	1360- $\frac{1}{8}$	381 (400- $\frac{1}{8}$)
C CIRCLING	1420-1 441 (500-1)	1440-1 461 (500-1)	1520- $\frac{1}{2}$ 541 (600- $\frac{1}{2}$)	1600-2 621 (700-2)

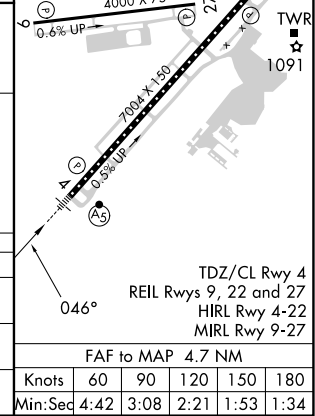
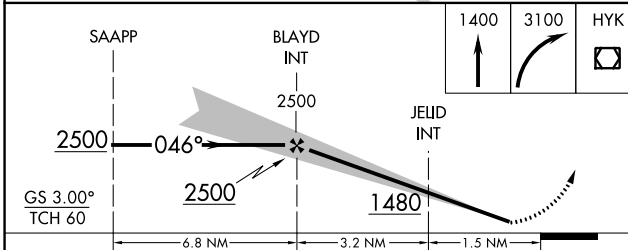
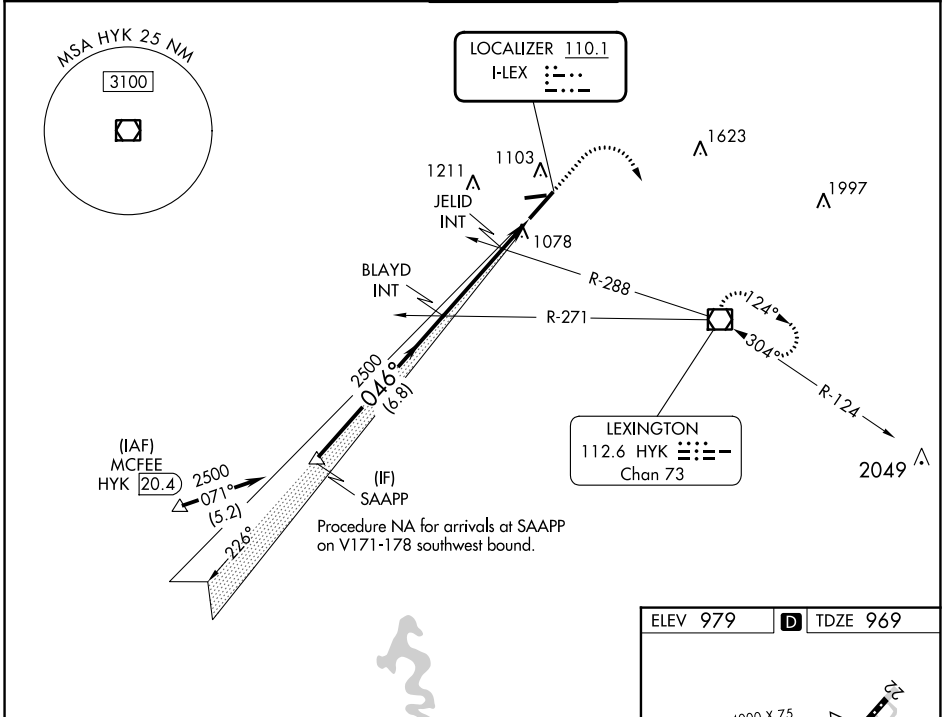
LOC I-LEX 110.1	APP CRS 046°	Rwy Idg 6604
		TDZE 969
		Apt Elev 979

ILS or LOC RWY 4

BLUE GRASS (LEX)

DME required for procedure entry.		MALSRL 	MISSED APPROACH: Climb to 1400 then climbing right turn to 3100 direct HYK VOR/DME and hold, continue climb-in-hold to 3100.
<p>▼ For inop ALS, increase S-LOC 4 Cats C and D visibility to RVR 5500. When local altimeter setting not received, use Frankfort altimeter setting: increase S-ILS 4 DA to 1231 feet and all visibilities to RVR 2000; increase all MDAs 80 feet and S-LOC 4 visibility Cats C and D to RVR 4500 and Circling visibility Cats C and D ¼ SM.</p>			

ATIS 126.3	LEXINGTON APP CON 120.15 259.3 (040°-220°) 120.75 298.9 (221°-039°)	LEXINGTON TOWER 119.1 257.8	GND CON 121.9	CLNC DEL 132.35
----------------------	---	---------------------------------------	-------------------------	---------------------------



CATEGORY	A	B	C	D
S-ILS 4	1169/18		200 (200-½)	
S-LOC 4	1340/24	371 (400-½)	1340/35	371 (400-¾)
C CIRCLING	1420-1 441 (500-1)	1440-1 461 (500-1)	1520-1½ 541 (600-½)	1600-2 621 (700-2)

FAF to MAP 4.7 NM					
Knots	60	90	120	150	180
Min:Seq	4:42	3:08	2:21	1:53	1:34

SE-1, 22 FEB 2024 to 21 MAR 2024

SE-1, 22 FEB 2024 to 21 MAR 2024

WAAS CH 90201 W22A	APP CRS 226°	Rwy Idg TDZE Apt Elev	6604 979 979
--	------------------------	-----------------------------	---

RNAV (GPS) RWY 22

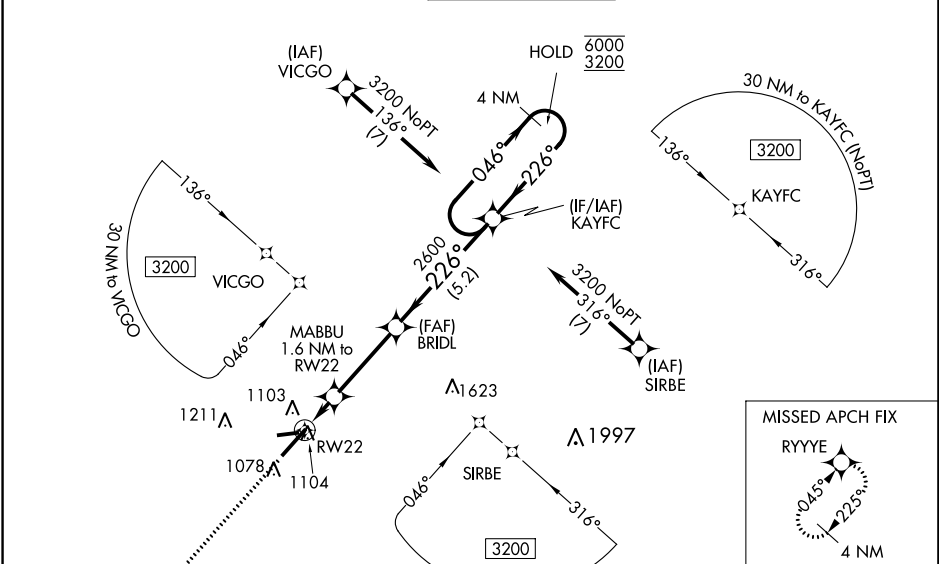
BLUE GRASS (LEX)

RNP APCH - GPS.

⚠ For uncompensated Baro-VNAV systems, LNAV/VNAV NA below -16°C or above 54°C. Baro-VNAV and VDP NA when using Frankfort altimeter setting. When local altimeter setting not received, use Frankfort altimeter setting: increase LPV DA to 1241 feet and all visibilities 1/8 SM; increase LNAV/VNAV DA to 1327 feet and all visibilities 1/8 SM; increase all MDAs 80 feet and visibility Cat C/D 1/4 SM.

MISSED APPROACH: Climb to 3200 direct RYYYE and hold, continue climb-in-hold to 3200.

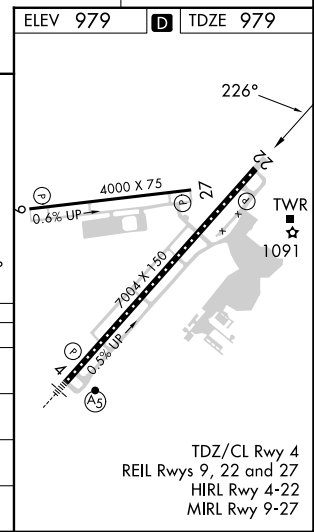
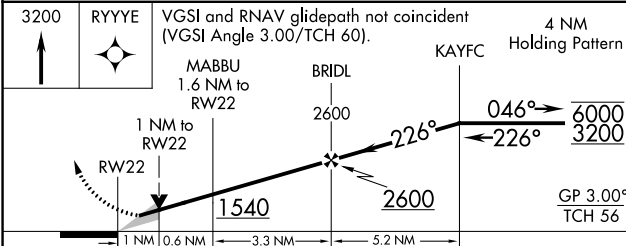
ATIS 126.3	LEXINGTON APP CON 120.15 259.3 (040°-220°) 120.75 298.9 (221°-039°)	LEXINGTON TOWER 119.1 257.8	GND CON 121.9	CLNC DEL 132.35
----------------------	---	---------------------------------------	-------------------------	---------------------------



SE-1, 22 FEB 2024 to 21 MAR 2024

SE-1, 22 FEB 2024 to 21 MAR 2024

ELEV 979	D TDZE 979
----------	-------------------



CATEGORY	A	B	C	D
LPV DA		1179-3/4	200 (200-3/4)	
LNAV/VNAV DA		1265-7/8	286 (300-7/8)	
LNAV MDA	1360-1	381 (400-1)	1360-1 1/8	381 (400-1 1/8)
C CIRCLING	1420-1 441 (500-1)	1440-1 461 (500-1)	1520-1 1/2 541 (600-1 1/2)	1600-2 621 (700-2)

TDZ/CL Rwy 4
REIL Rwys 9, 22 and 27
HIRL Rwy 4-22
MIRL Rwy 9-27

WAAS CH 78218 W27A	APP CRS 267°	Rwy Idg TDZE Apt Elev	4000 974 979
--	------------------------	-----------------------------	---

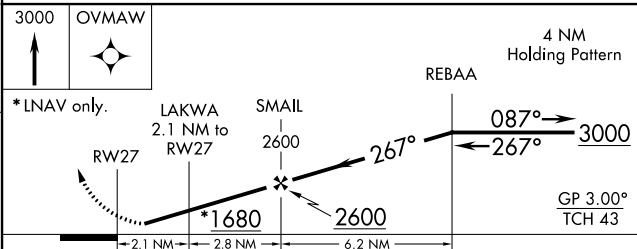
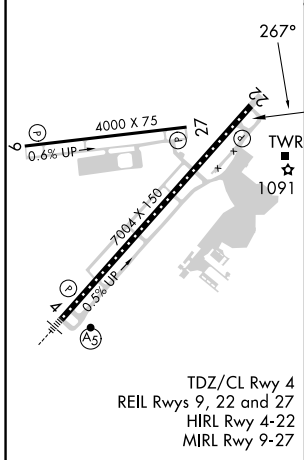
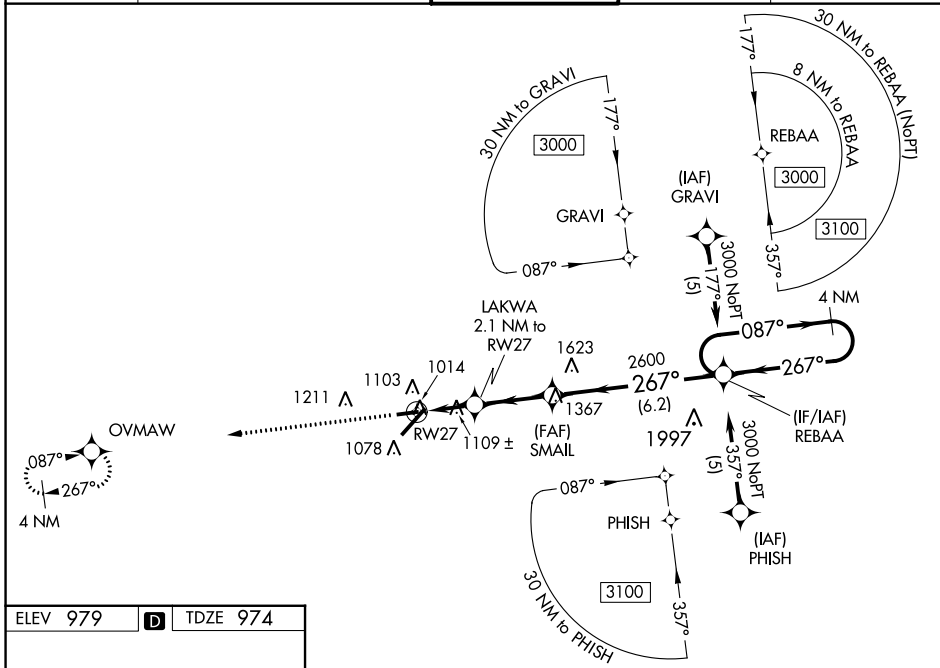
RNAV (GPS) RWY 27

BLUE GRASS (LEX)

⚠ Baro-VNAV NA when using Frankfurt altimeter setting. For uncompensated Baro-VNAV systems, LNAV/VNAV NA below -16°C (4°F) or above 47°C (116°F). DME/DME RNP-0.3 NA. Helicopter visibility reduction below 1 SM NA. When local altimeter setting not received, use Frankfurt altimeter setting; increase LPV DA to 1421 feet and all visibilities ¼ SM; increase LNAV/VNAV DA to 1450 feet and all visibilities ¼ SM; increase all MDAs 80 feet and visibility Cats C and D ¼ SM.

MISSED APPROACH: Climb to 3000 direct OVMAW and hold.

ATIS 126.3	LEXINGTON APP CON 120.15 259.3 (040°-220°) 120.75 298.9 (221°-039°)	LEXINGTON TOWER 119.1 257.8	GND CON 121.9	CLNC DEL 132.35
----------------------	---	---------------------------------------	-------------------------	---------------------------



CATEGORY	A	B	C	D
LPV DA		1359-1¼	385 (400-1¼)	
LNAV/VNAV DA		1388-1⅜	414 (500-1⅜)	
LNAV MDA	1360-1	386 (400-1)	1360-1⅛	386 (400-1⅛)
C CIRCLING	1420-1 441 (500-1)	1440-1 461 (500-1)	1520-1½ 541 (600-1½)	1600-2 621 (700-2)

SE-1, 22 FEB 2024 to 21 MAR 2024

SE-1, 22 FEB 2024 to 21 MAR 2024


WAAS CH 70401 W04A	APP CRS 046°	Rwy Idg TDZE Apt Elev	6604 969 979
--	------------------------	-----------------------------	---

RNAV (GPS) RWY 4

BLUE GRASS (LEX)

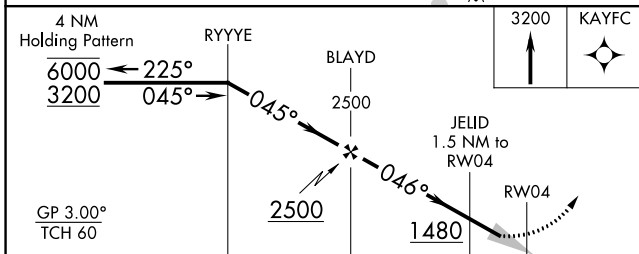
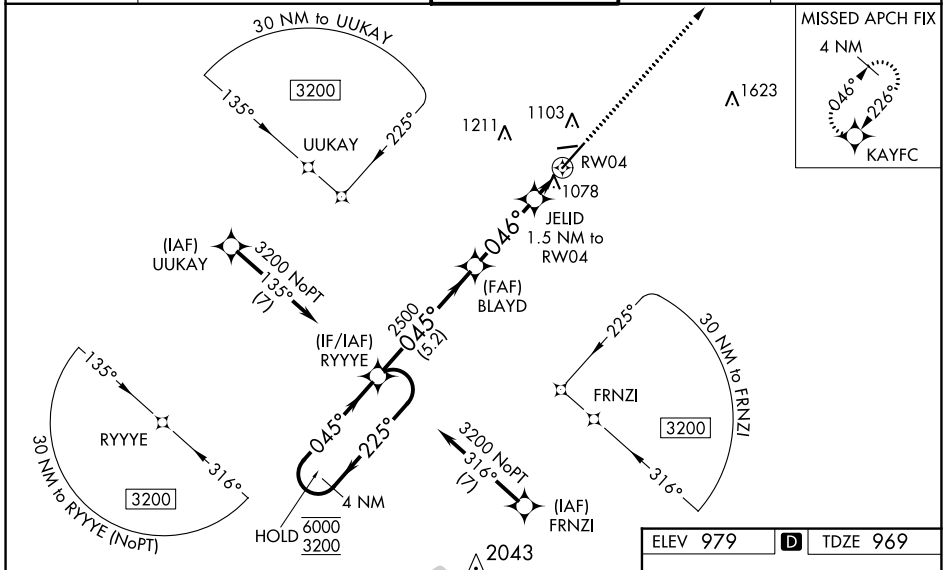
RNP APCH - GPS.

⚠ For uncompensated Baro-VNAV systems, LNAV/VNAV NA below -16°C or above 54°C. For inop ALS, increase LNAV/VNAV all Cats visibility to RVR 5500, and LNAV Cats C and D visibility to RVR 5500. When local altimeter setting not received, use Frankfort altimeter setting; increase LPV DA to 1231 feet and all visibilities to RVR 2000; increase LNAV/VNAV DA to 1420 feet and all visibilities to RVR 4000; increase all MDAs 80 feet and LNAV visibility Cat C/D to RVR 4500 and Circling visibility Cat C/D ¼ SM. Baro-VNAV NA when using Frankfort altimeter setting.

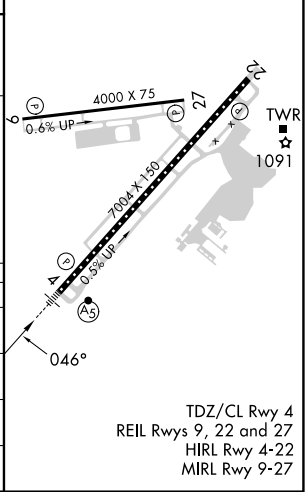
MALSR 

MISSED APPROACH:
Climb to 3200 direct KAYFC and hold, continue climb-in-hold to 3200.

ATIS 126.3	LEXINGTON APP CON 120.15 259.3 (040°-220°) 120.75 298.9 (221°-039°)	LEXINGTON TOWER 119.1 257.8	GND CON 121.9	CLNC DEL 132.35
----------------------	---	---------------------------------------	-------------------------	---------------------------



ELEV 979	D TDZE 969
----------	-------------------



CATEGORY	A	B	C	D
LPV DA		1169/18	200 (200-½)	
LNAV/VNAV DA		1340/35	371 (400-¾)	
LNAV MDA	1340/24	371 (400-½)	1340/35	371 (400-¾)
C CIRCLING	1420-1 441 (500-1)	1440-1 461 (500-1)	1520-1½ 541 (600-1½)	1600-2 621 (700-2)

TDZ/CL RWY 4
REIL Rwy 9, 22 and 27
HIRL Rwy 4-22
MIRL Rwy 9-27

SE-1, 22 FEB 2024 to 21 MAR 2024

SE-1, 22 FEB 2024 to 21 MAR 2024

WAAS CH 86918 W09A	APP CRS 087°	Rwy Idg TDZE Apt Elev	4000 967 979
--	------------------------	-----------------------------	---

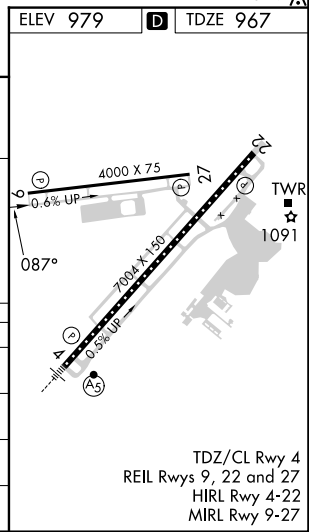
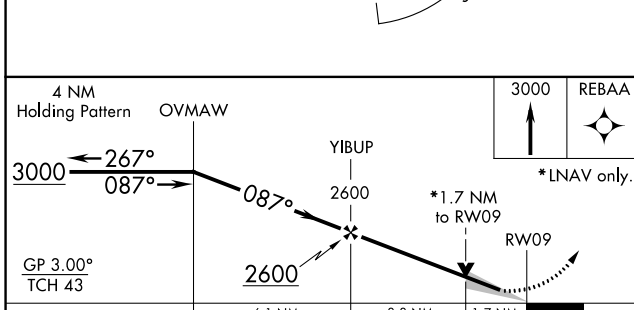
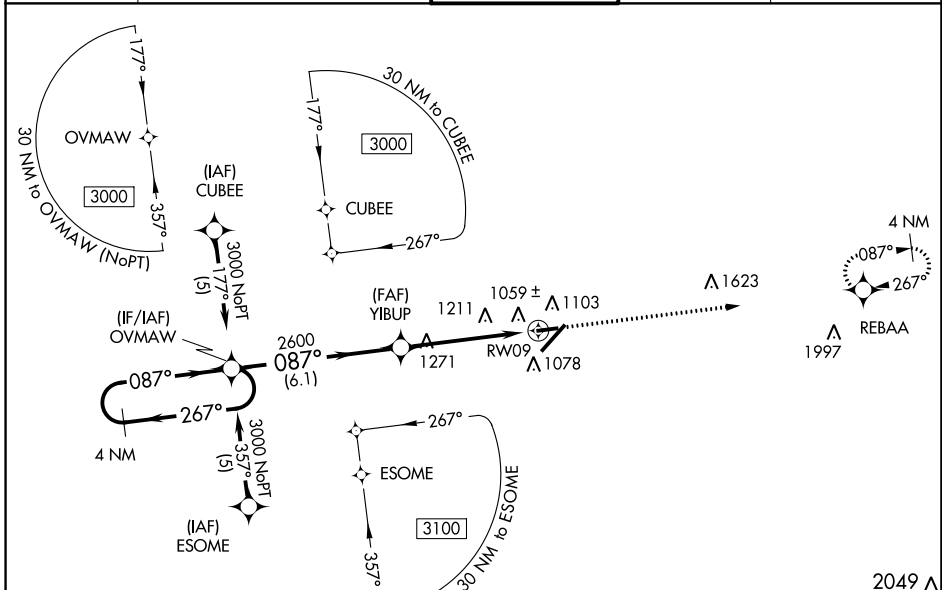
RNAV (GPS) RWY 9

BLUE GRASS (LEX)

⚠ Baro-VNAV NA when using Frankfort altimeter setting. For uncompensated Baro-VNAV systems, LNAV/VNAV NA below -16°C (4°F) or above 54°C (130°F).
⚠ DME/DME RNP-0.3 NA. VDP NA with Frankfort altimeter setting. When local altimeter setting not received, use Frankfort altimeter setting: increase LPV DA to 1279 feet and all visibilities ¼ SM; increase LNAV/VNAV DA to 1421 feet and all visibilities ¼ SM; increase all MDAs 80 feet and visibility Cats C and D ¼ SM.

MISSED APPROACH: Climb to 3000 direct REBAA and hold.

ATIS 126.3	LEXINGTON APP CON 120.15 259.3 (040°-220°) 120.75 298.9 (221°-039°)	LEXINGTON TOWER 119.1 257.8	GND CON 121.9	CLNC DEL 132.35
----------------------	---	---------------------------------------	-------------------------	---------------------------



CATEGORY	A	B	C	D
LPV DA	1217-1		250 (300-1)	
LNAV/VNAV DA	1359-1½		392 (400-1½)	
LNAV MDA	1540-1	573 (600-1)	1540-1½ 573 (600-1½)	1540-1¾ 573 (600-1¾)
C CIRCLING	1540-1	561 (600-1)	1540-1½ 561 (600-1½)	1600-2 621 (700-2)

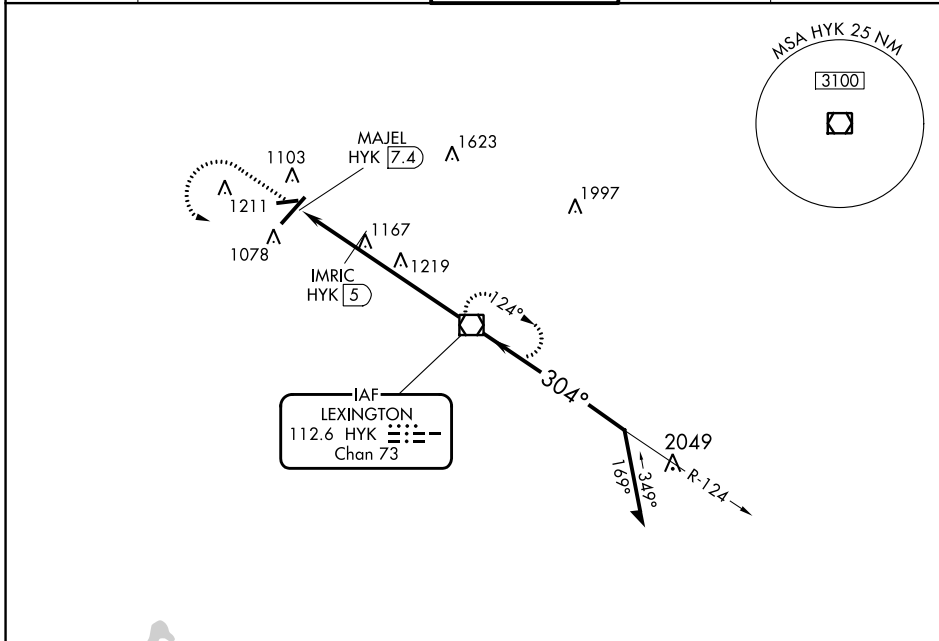
VOR/DME HYK 112.6 Chan 73	APP CRS 304°	Rwy Idg TDZE Apt Elev N/A N/A 979
---	------------------------	--

VOR-A
BLUE GRASS (LEX)

▽ When local altimeter setting not received, use Frankfort altimeter setting and increase all MDAs 80 feet and visibility Cats C and D ¼ SM.

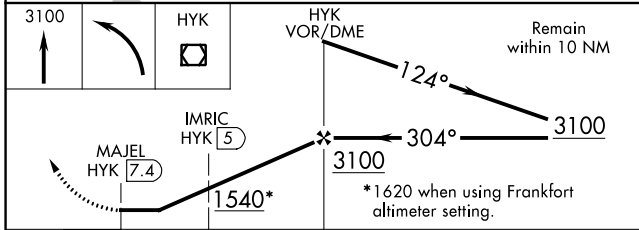
MISSED APPROACH: Climb to 3100 then left turn direct HYK VOR/DME and hold.

ATIS 126.3	LEXINGTON APP CON 120.15 259.3 120.75 298.9 (040°-220°) (221°-039°)	LEXINGTON TOWER 119.1 257.8	GND CON 121.9	CLNC DEL 132.35
----------------------	--	---------------------------------------	-------------------------	---------------------------

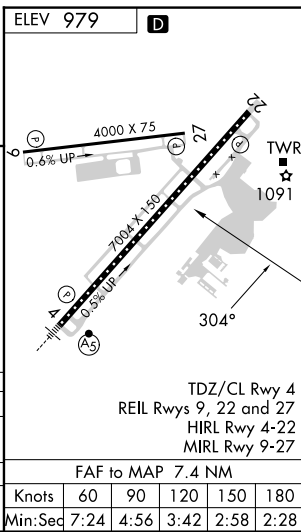


SE-1, 22 FEB 2024 to 21 MAR 2024

SE-1, 22 FEB 2024 to 21 MAR 2024



CATEGORY	A	B	C	D
C CIRCLING	1540-1	561 (600-1)	1540-1½ 561 (600-1½)	1600-2 621 (700-2)
IMRIC DME FIX MINIMUMS				
C CIRCLING	1460-1	481 (500-1)	1520-1½ 541 (600-1½)	1600-2 621 (700-2)



TDZ/CL Rwy 4
REIL Rwys 9, 22 and 27
HIRL Rwy 4-22
MIRL Rwy 9-27

FAF to MAP 7.4 NM					
Knots	60	90	120	150	180
Min:Seq	7:24	4:56	3:42	2:58	2:28