

WAAS CH 82005 W16A	APP CRS 163°	Rwy Idg TDZE Apt Elev	5000 1515 1535
--	------------------------	-----------------------------	---

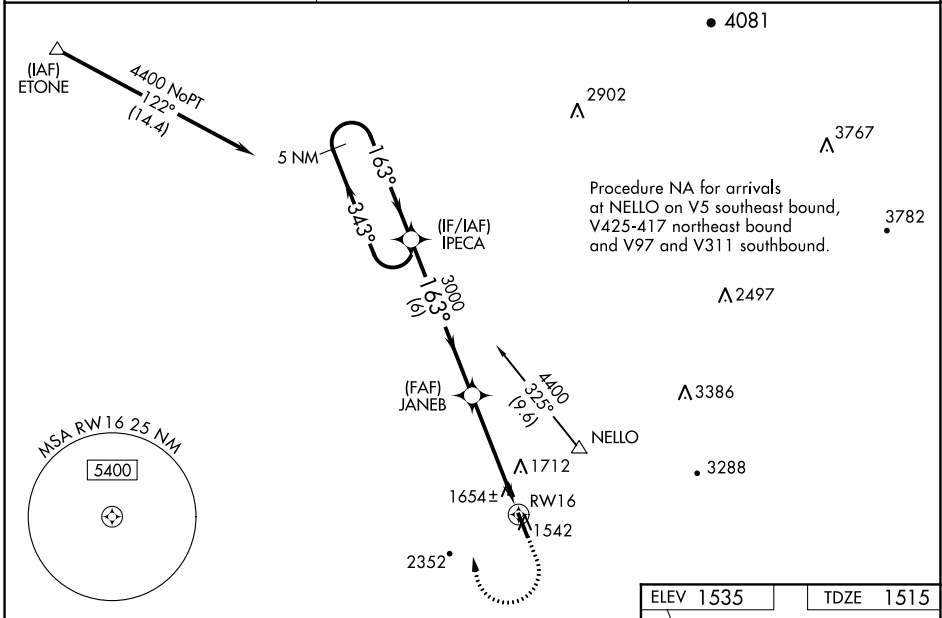
RNAV (GPS) RWY 16

PICKENS COUNTY (JZP)

NA Baro-VNAV NA when using Canton altimeter setting. For uncompensated Baro-VNAV systems, LNAV/VNAV NA below -18°C (0°F) or above 54°C (130°F). DME/DME RNP-0.3 NA. Helicopter visibility reduction below 3/4 SM NA. When local altimeter setting not received, use Canton altimeter setting and increase LPV DA to 1976 LNAV/VNAV DA to 1889 and all MDA 80 feet, increase LPV all Cats visibility to 1%, LNAV/VNAV all Cats visibility to 1%, LNAV Cat C visibility to 1% and Circling Cat C visibility to 2%.

MISSED APPROACH:
Climb to 3000 then climbing right turn to 4400 direct IPECA and hold.

AWOS-3PT 118.55	ATLANTA CENTER 133.1 342.425	UNICOM 122.725 (CTAF)
---------------------------	--	---------------------------------



VGSI and RNAV glidepath not coincident (VGSI Angle 3.00/TCH 30).

5 NM Holding Pattern

IPECA

JANE B

RWY 16

3000

4400

343°

163°

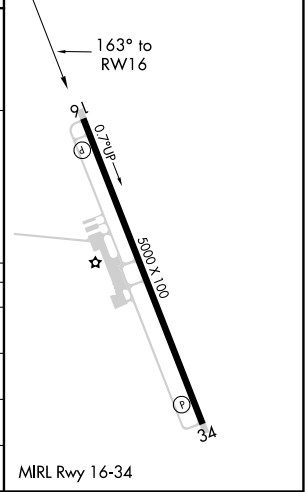
163°

GP 3.00° TCH 40

6 NM

4.6 NM

ELEV 1535	TDZE 1515
-----------	-----------



CATEGORY	A	B	C	D
LPV DA	1925-1 3/8 410 (400-1%)			NA
LNAV/VNAV DA	1838-1 1/8 323 (400-1%)			NA
LNAV MDA	1980-1	465 (500-1)	1980-1 3/8 465 (500-1%)	NA
CIRCLING	1980-1 445 (500-1)	2160-1 625 (700-1)	2360-2 1/2 825 (900-2 1/2)	NA

SE-4, 22 APR 2021 to 20 MAY 2021

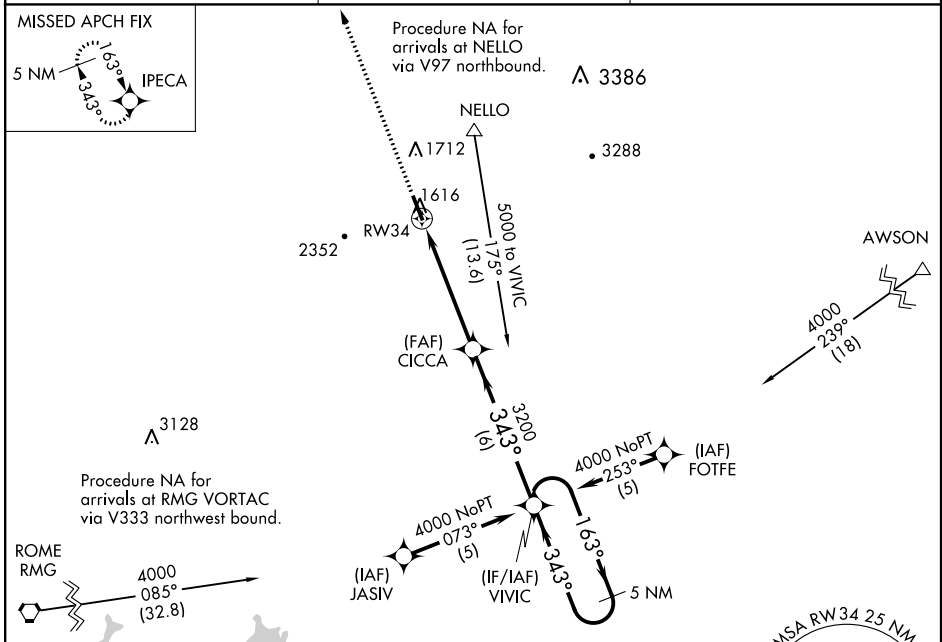
SE-4, 22 APR 2021 to 20 MAY 2021

WAAS CH 77705 W34A	APP CRS 343°	Rwy Idg TDZE 1535 Apt Elev 1535
--	------------------------	---

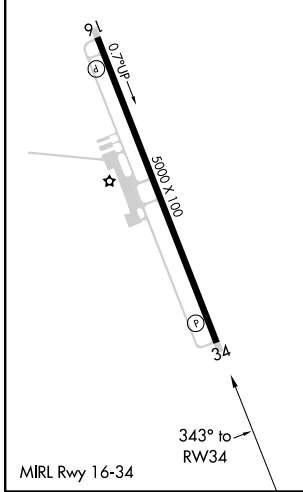
RNAV (GPS) RWY 34

PICKENS COUNTY (JZP)

NA	DME/DME RNP-0.3 NA. Visibility reduction by helicopters NA. If local altimeter setting not received, use Cobb County Intl-McCollum Field altimeter setting and increase all LPV DAs to 1922/MDAs 140 feet.	MISSED APPROACH: Climb to 5400 direct IPECA and hold, continue climb-in-hold to 5400.
AWOS-3PT 118.55	ATLANTA CENTER 133.1 342.425	UNICOM 122.725 (CTAF)



ELEV 1535	TDZE 1535
-----------	-----------



5400	IPECA	VGSI and RNAV glidepath not coincident (VGSI Angle 3.00/TCH 27).	5 NM Holding Pattern	
CATEGORY	A	B	C	D
LPV DA	1789-1	254 (300-1)		NA
LNAV MDA	1880-1	345 (400-1)		NA
CIRCLING	1960-1 425 (500-1)	2160-1 625 (700-1)	2360-2½ 825 (900-2½)	NA

SE-4, 22 APR 2021 to 20 MAY 2021