

LOC/DME I-JWN 110.3 Chan 40	APP CRS 198°	Rwy Idg TDZE Apt Elev	6001 501 501
---	------------------------	-----------------------------	---

ILS or LOC RWY 20

JOHN C TUNE (JWN)

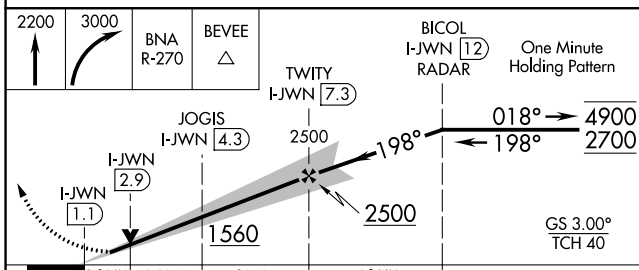
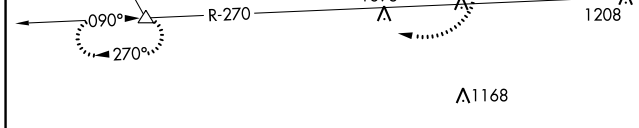
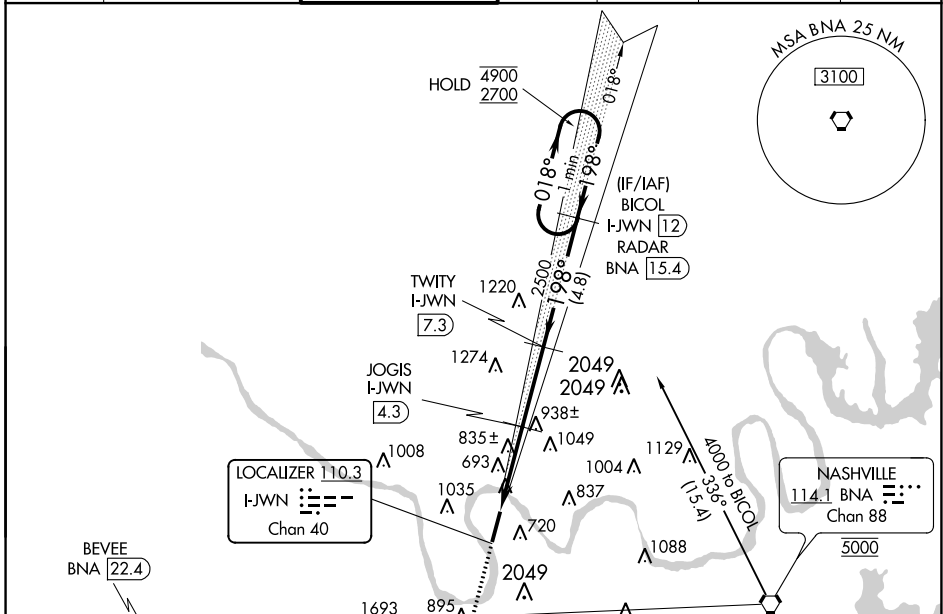
DME required.

V Circling NA east of Rwy 2-20. VDP NA when using Nashville Intl altimeter setting.

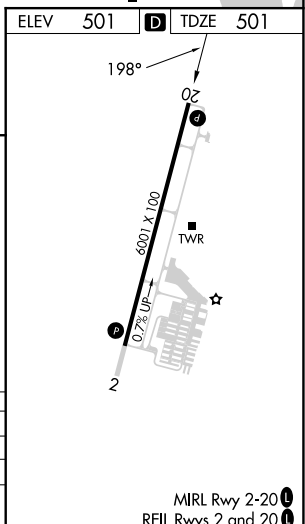
NA When local altimeter setting not received, use Nashville Intl altimeter setting and increase S-ILS 20 DA to 738 feet, increase all MDAs 40 feet.

MISSED APPROACH: Climb to 2200 then climbing right turn to 3000 on BNA VORTAC R-270 to BEVEE/BNA 22.4 DME and hold.

ATIS 127.075	NASHVILLE APP CON 119.35 372.0	JOHN TUNE TOWER ★ 119.45 (CTAF) 0	GND CON 121.7	CLNC DEL 121.7	CLNC DEL 124.55 (when twr closed)	UNICOM 122.7
------------------------	--	--	-------------------------	--------------------------	--	------------------------



CATEGORY	A	B	C	D
S-ILS 20	701-3/4 200 (200-3/4)			
S-LOC 20	1100-1	599 (600-1)	1100-1 3/4	599 (600-1 3/4)
C CIRCLING	1200-1	699 (700-1)	1340-2 1/2	1340-2 3/4
			839 (900-2 1/2)	839 (900-2 3/4)



SE-1, 22 FEB 2024 to 21 MAR 2024

SE-1, 22 FEB 2024 to 21 MAR 2024

WAAS CH 78325 W02A	APP CRS 018°	Rwy Idg TDZE Apt Elev	6001 484 501
---------------------------------	------------------------	-----------------------------	---

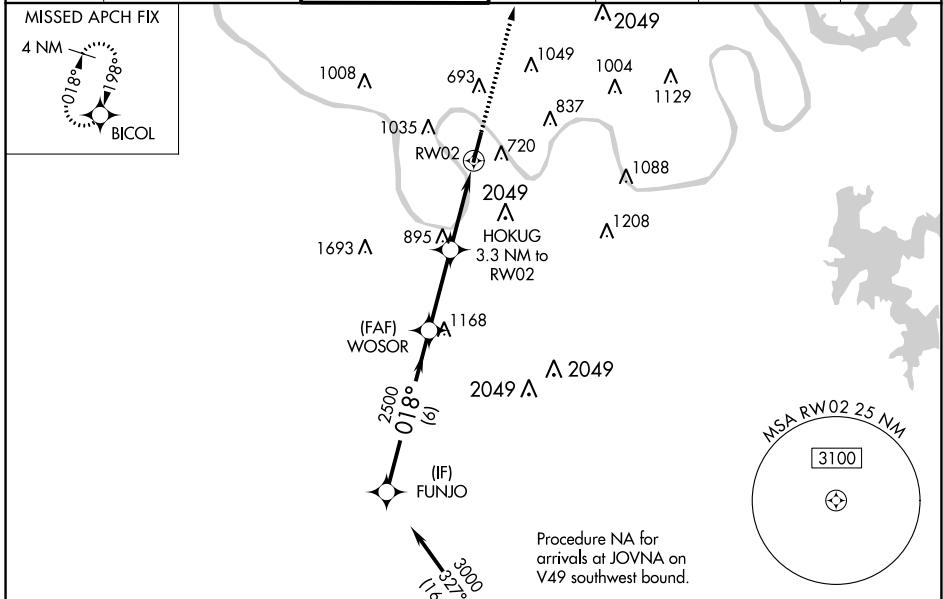
RNAV (GPS) RWY 2

JOHN C TUNE (JWN)

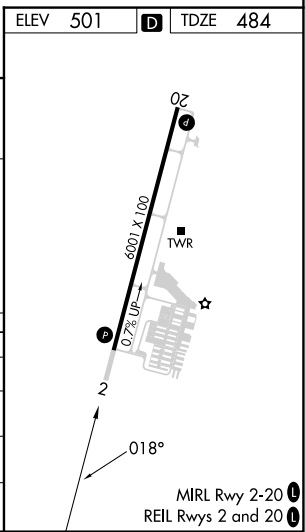
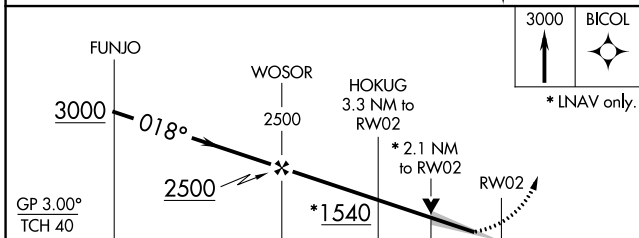
NA For uncompensated Baro-VNAV systems, LNAV/VNAV NA below -15°C (5°F) or above 54°C (130°F). Circling NA E of Rwy 2-20. Baro-VNAV and VDP NA when using Nashville Intl altimeter setting. DME/DME RNP-0.3 NA. When local altimeter setting not received, use Nashville Intl altimeter setting and increase all DAs 39 feet and all MDAs 40 feet; increase LPV visibility all Cats 1/8 SM, LNAV visibility Cat B 1/4 SM.

MISSED APPROACH:
Climb to 3000 direct BICOL and hold.

ATIS 127.075	NASHVILLE APP CON 119.35 372.0	JOHN TUNE TOWER * 119.45 (CTAF) 0	GND CON 121.7	CLNC DEL 121.7	CLNC DEL 124.55 (when twr closed)	UNICOM 122.7
------------------------	--	--	-------------------------	--------------------------	--	------------------------



ELEV	501	D	TDZE	484
------	-----	----------	------	-----



CATEGORY	A	B	C	D
LPV DA		734-7/8	250 (300-7/8)	
LNAV/VNAV DA		1079-2 1/2	595 (600-2 1/2)	
LNAV MDA	1160-1	676 (700-1)	1160-2	676 (700-2)
C CIRCLING	1200-1	699 (700-1)	1340-2 3/4	839 (900-2 3/4)

SE-1, 22 FEB 2024 to 21 MAR 2024

SE-1, 22 FEB 2024 to 21 MAR 2024

WAAS CH 86625 W20A	APP CRS 198°	Rwy Idg TDZE Apt Elev	6001 501 501
--	------------------------	-----------------------------	---

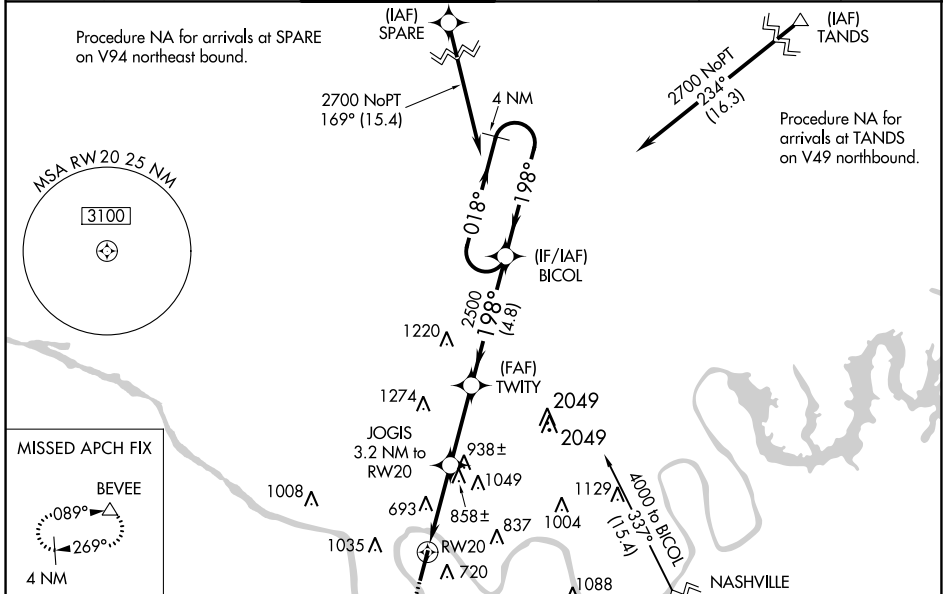
RNAV (GPS) RWY 20

JOHN C TUNE (JWN)

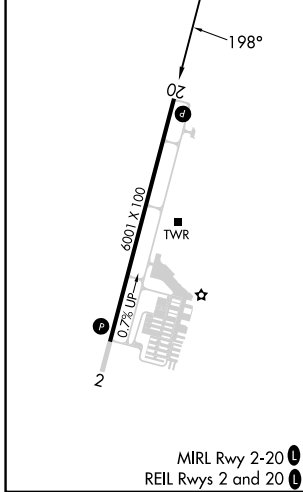
NA For uncompensated Baro-VNAV systems, LNAV/VNAV NA below -1.5°C (5°F) or above 54°C (130°F), DME/DME RNP-0.3 NA. When local altimeter setting not received, use Nashville Intl altimeter setting and increase all DA 40 feet and all visibilities 1/8 mile; increase all MDA 40 feet and LNAV Cats C and D visibility 1/8 mile. Circling NA east of Rwy 2-20. Baro-VNAV and VDP NA when using Nashville Intl altimeter setting. Helicopter visibility reduction below 3/4 SM NA.

MISSED APPROACH: Climb to 1200 then climbing right turn to 3000 direct BEVEE and hold.

ATIS 127.075	NASHVILLE APP CON 119.35 372.0	JOHN TUNE TOWER ★ 119.45 (CTAF) 0	GND CON 121.7	CLNC DEL 121.7	CLNC DEL 124.55 (when twr closed)	UNICOM 122.7
------------------------	--	---	-------------------------	--------------------------	--	------------------------



ELEV 501	D TDZE 501
----------	-------------------



CATEGORY	A	B	C	D
LPV DA		856-1¼	355 (400-1¼)	
LNAV/VNAV DA		1003-1¾	502 (600-1¾)	
LNAV MDA	1120-1	619 (700-1)	1120-1¾	619 (700-1¾)
C CIRCLING	1200-1	699 (700-1)	1340-2½ 839 (900-2½)	1340-2¾ 839 (900-2¾)

SE-1, 22 FEB 2024 to 21 MAR 2024

SE-1, 22 FEB 2024 to 21 MAR 2024