

(BNYRD6.BNYRD) 18144

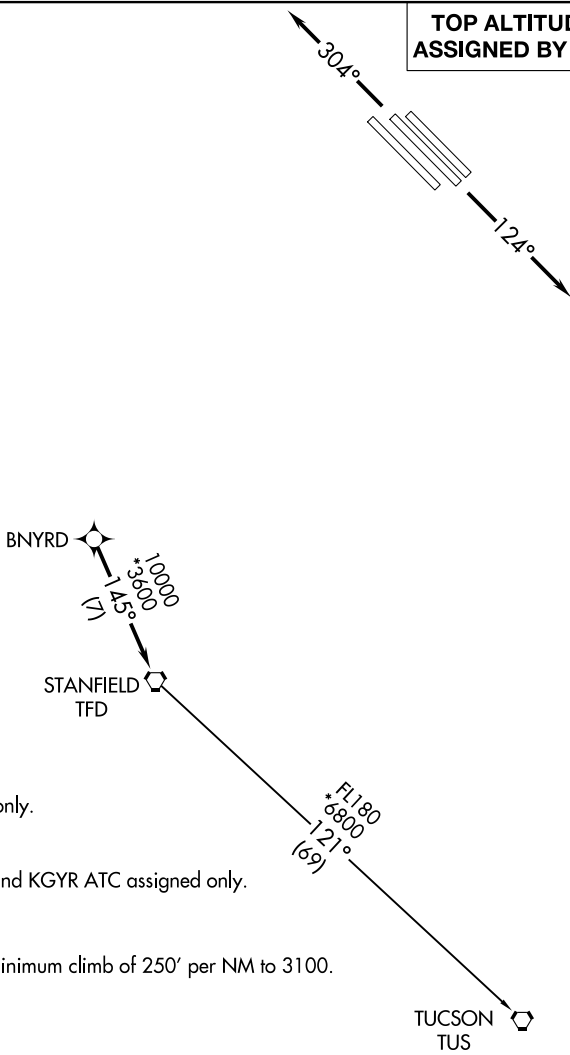
BNYRD SIX DEPARTURE (RNAV)

AL-74 (FAA)

PHOENIX-MESA GATEWAY (IWA)
PHOENIX, ARIZONA

ATIS ★
133.5 270.275
CLNC DEL
135.05
GND CON
128.25 275.8
GATEWAY TOWER ★
120.6 289.4
PHOENIX DEP CON
124.9 353.8

**TOP ALTITUDE:
ASSIGNED BY ATC**



- NOTE: RNAV 1.
- NOTE: Turbojets and turboprops only.
- NOTE: RADAR required.
- NOTE: GPS required.
- NOTE: Aircraft departing KGEU and KGYR ATC assigned only.

TAKEOFF MINIMUMS

Rwys 12L/C/R: Standard with a minimum climb of 250' per NM to 3100.
Rwys 30L/C/R: Standard.

NOTE: Chart not to scale.



DEPARTURE ROUTE DESCRIPTION

TAKEOFF RUNWAYS 12L/C/R: Climb heading 124° or as assigned by ATC, thence. . . .

TAKEOFF RUNWAYS 30L/C/R: Climb heading 304° or as assigned by ATC, thence. . . .

. . . .expect RADAR vectors to BNYRD, then on track 145° to TFD VORTAC, then on (transition), maintain ATC assigned altitude, expect filed altitude 3 minutes after departure.

TUCSON TRANSITION (BNYRD6.TUS)

BNYRD SIX DEPARTURE (RNAV)

(BNYRD6.BNYRD) 24MAY18

PHOENIX, ARIZONA
PHOENIX-MESA GATEWAY (IWA)

SW-4, 22 FEB 2024 to 21 MAR 2024

SW-4, 22 FEB 2024 to 21 MAR 2024

FTHLS SIX DEPARTURE (RNAV)
(FTHLS6.FTHLS) 24MAY18

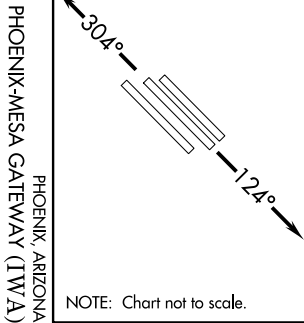
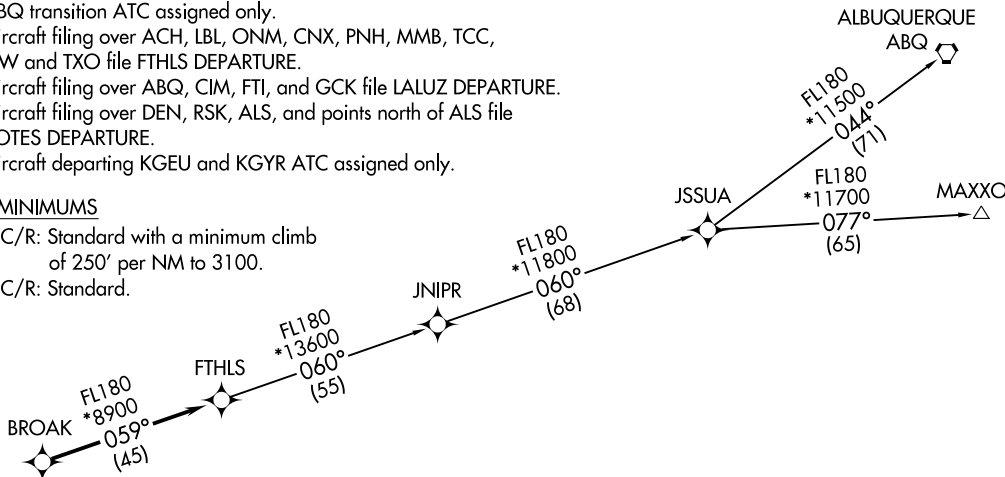
ATIS *
133.5 270.275
CLNC DEL
135.05
GND CON
128.25 275.8
GATEWAY TOWER *
120.6 289.4
PHOENIX DEP CON
124.9 353.8

NOTE: RNAV 1.
NOTE: Turbojets and turboprops only.
NOTE: RADAR required.
NOTE: GPS required.
NOTE: ABQ transition ATC assigned only.
NOTE: Aircraft filing over ACH, LBL, ONM, CNX, PNH, MMB, TCC, IRW and TXO file FTHLS DEPARTURE.
NOTE: Aircraft filing over ABQ, CIM, FTI, and GCK file LALUZ DEPARTURE.
NOTE: Aircraft filing over DEN, RSK, ALS, and points north of ALS file YOTES DEPARTURE.
NOTE: Aircraft departing KGEU and KGYR ATC assigned only.

TAKEOFF MINIMUMS

Rwys 12L/C/R: Standard with a minimum climb of 250' per NM to 3100.
Rwys 30L/C/R: Standard.

**TOP ALTITUDE:
ASSIGNED BY ATC**



NOTE: Chart not to scale.



DEPARTURE ROUTE DESCRIPTION

TAKEOFF RUNWAYS 12L/C/R: Climb heading 124° or as assigned by ATC. Thence. . . .
TAKEOFF RUNWAYS 30L/C/R: Climb heading 304° or as assigned by ATC. Thence. . . .
. . . .expect RADAR vectors to BROAK, then on track 059° to FTHLS, then on (transition).
Maintain ATC assigned altitude, expect filed altitude 3 minutes after departure.

ALBUQUERQUE TRANSITION (FTHLS6.ABQ)

JNIPR TRANSITION (FTHLS6.JNIPR)

MAXXO TRANSITION (FTHLS6.MAXXO)

(FTHLS6.FTHLS) 18144
FTHLS SIX DEPARTURE (RNAV)

AL74 (FAA)

PHOENIX-MESA GATEWAY (TWA)
PHOENIX, ARIZONA

ZZZO EIGHT DEPARTURE (RNAV)
(IZZ08, IZZO) 25ANZ4

PHOENIX DEP CON
124.9 353.8
ATIS *
133.5 270.275
CLNC DEL
135.05
GND CON
128.25 275.8
GATEWAY TOWER *
120.6 289.4

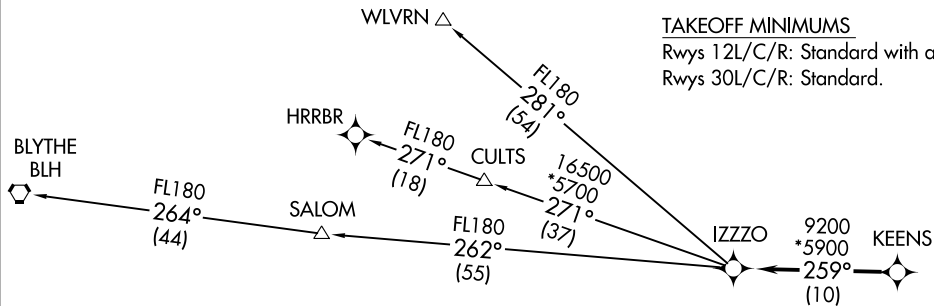
**TOP ALTITUDE:
ASSIGNED BY ATC**

RNAV 1 - GPS.
RADAR required.

NOTE: Turbojets and turboprops only.
NOTE: Aircraft requesting FL220 and below must file BLYTHE Transition.
NOTE: Turbojets landing LAX, file WLVRN Transition.
NOTE: Aircraft landing other than LAX and turboprops landing at LAX:
Requesting FL240 and above, file HRRBR Transition.
NOTE: Aircraft departing KGEU and KGYR ATC assigned only.

TAKEOFF MINIMUMS

Rwys 12L/C/R: Standard with a minimum climb of 250'/NM to 3100.
Rwys 30L/C/R: Standard.

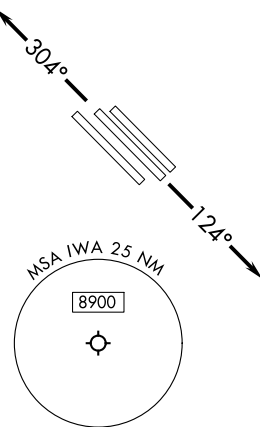


DEPARTURE ROUTE DESCRIPTION

TAKEOFF RUNWAYS 12L/C/R: Climb on heading 124° or as assigned by ATC, thence. . . .
TAKEOFF RUNWAYS 30L/C/R: Climb on heading 304° or as assigned by ATC, thence. . . .

. . . .for RADAR vectors to KEENS, then on track 259° to IZZO, then on (transition).
Maintain ATC assigned altitude, expect filed altitude 3 minutes after departure.

- BLYTHE TRANSITION (IZZ08.BLH)**
- HRRBR TRANSITION (IZZ08.HRRBR)**
- WLVRN TRANSITION (IZZ08.WLVRN)**



NOTE: Chart not to scale.

PHOENIX-MESA GATEWAY (IWA)
PHOENIX, ARIZONA

ZZZO EIGHT DEPARTURE (RNAV)
(IZZ08, IZZO) 24025

AL-74 (FAA)

PHOENIX-MESA GATEWAY (IWA)
PHOENIX, ARIZONA

JUDTH SEVEN DEPARTURE (RNAV)
(JUDTH7 JUDTH) 24MAY18

PHOENIX-MESA GATEWAY (TWA)
PHOENIX, ARIZONA

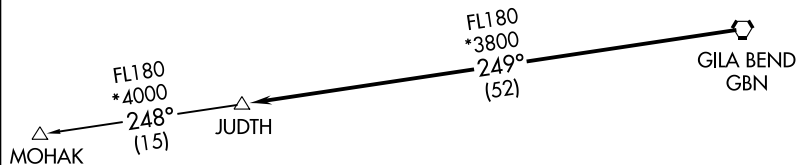
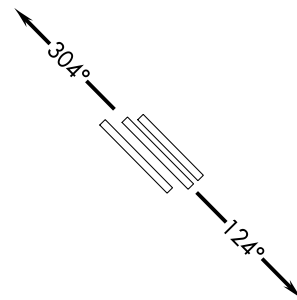
ATIS ★
133.5 270.275
CLNC DEL
135.05
GND CON
128.25 275.8
GATEWAY TOWER ★
120.6 289.4
PHOENIX DEP CON
124.9 353.8

NOTE: RNAV 1.
NOTE: Turbjets and turboprops only.
NOTE: RADAR required.
NOTE: GPS required.
NOTE: Aircraft departing KGEU and KGYR ATC assigned only.

TAKEOFF MINIMUMS

Rwys 12L/C/R: Standard with a minimum climb of 250' per NM to 3100.
Rwys 30L/C/R: Standard.

**TOP ALTITUDE:
ASSIGNED BY ATC**



NOTE: Chart not to scale.



DEPARTURE ROUTE DESCRIPTION

TAKEOFF RUNWAYS 12L/C/R: Climb heading 124° or as assigned by ATC, thence. . . .

TAKEOFF RUNWAYS 30L/C/R: Climb heading 304° or as assigned by ATC, thence. . . .

. . . . expect RADAR vectors to GBN VORTAC, then on track 249° to JUDTH, then on (transition).
Maintain ATC assigned altitude, expect filed altitude 3 minutes after departure.

MOHAK TRANSITION (JUDTH7.MOHAK)

(JUDTH7 JUDTH) 181.44
JUDTH SEVEN DEPARTURE (RNAV)

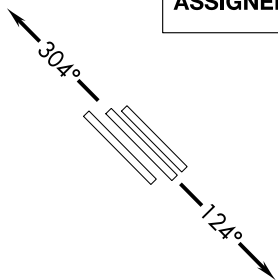
A1-74 (FAA)

PHOENIX-MESA GATEWAY (TWA)
PHOENIX, ARIZONA

KATMN SIX DEPARTURE (RNAV)
(KATMN6, KATMN) 24MAY18

PHOENIX, ARIZONA
PHOENIX-MESA GATEWAY (ITWA)

**TOP ALTITUDE:
ASSIGNED BY ATC**



DEPARTURE ROUTE DESCRIPTION

TAKEOFF RUNWAYS 12L/C/R: Climb heading 124° or as assigned by ATC. Thence. . . .

TAKEOFF RUNWAYS 30L/C/R: Climb heading 304° or as assigned by ATC. Thence. . . .

. . . .on RADAR vectors to ECLPS, then on track 111° to KATMN, then on (transition). Maintain ATC assigned altitude, expect filed altitude 3 minutes after departure.

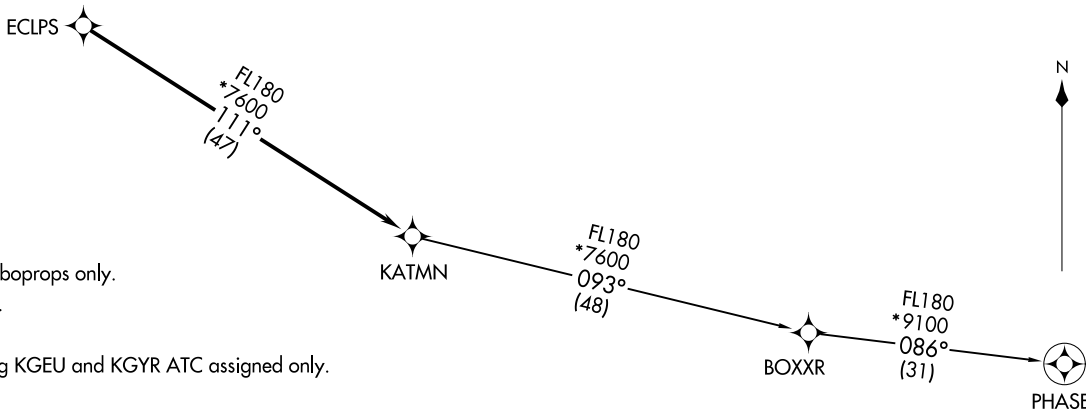
PHASE TRANSITION (KATMN6.PHASE)

ATIS*
 133.5 270.275
 CLNC DEL
 135.05
 GND CON
 128.25 275.8
 GATEWAY TOWER*
 120.6 289.4
 PHOENIX DEP CON
 124.9 353.8

(KATMN6, KATMN) 18144
KATMN SIX DEPARTURE (RNAV)

AL-74 (FAA)

PHOENIX-MESA GATEWAY (ITWA)
PHOENIX, ARIZONA



- NOTE: RNAV 1.
- NOTE: Turbojets and turboprops only.
- NOTE: RADAR required.
- NOTE: GPS required.
- NOTE: Aircraft departing KGEU and KGYR ATC assigned only.

TAKEOFF MINIMUMS

Rwys 12L/C/R: Standard with a minimum climb of 250' per NM to 3100.
 Rwys 30L/C/R: Standard.

NOTE: Chart not to scale.

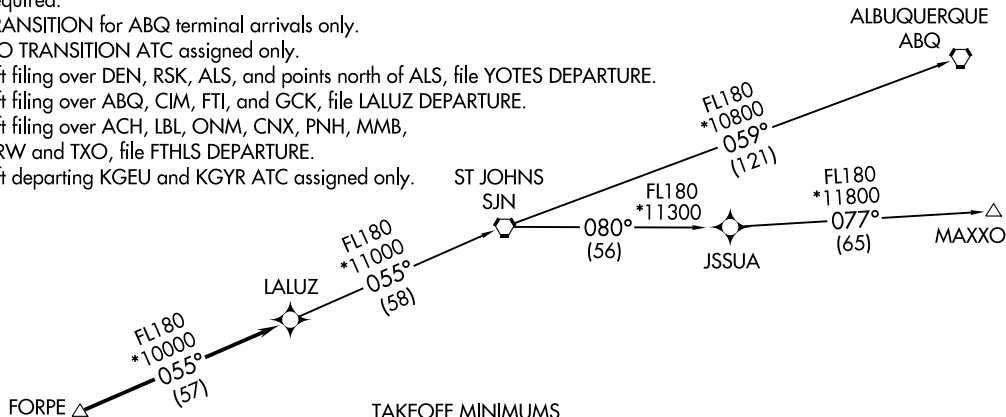
LALUZ SIX DEPARTURE (RNAV)
 (LALUZ6.LALUZ) 24MAY18

PHOENIX-MESA GATEWAY (TWA)
 PHOENIX, ARIZONA

ATIS *
 133.5 270.275
 CLNC DEL
 135.05
 GND CON
 128.25 275.8
 GATEWAY TOWER *
 120.6 289.4
 PHOENIX DEP CON
 124.9 353.8

NOTE: RNAV 1.
 NOTE: Turbojets and turboprops only.
 NOTE: RADAR required.
 NOTE: GPS required.
 NOTE: SJN TRANSITION for ABQ terminal arrivals only.
 NOTE: MAXXO TRANSITION ATC assigned only.
 NOTE: Aircraft filing over DEN, RSK, ALS, and points north of ALS, file YOTES DEPARTURE.
 NOTE: Aircraft filing over ABQ, CIM, FTI, and GCK, file LALUZ DEPARTURE.
 NOTE: Aircraft filing over ACH, LBL, ONM, CNX, PNH, MMB, TCC, IRW and TXO, file FTHLS DEPARTURE.
 NOTE: Aircraft departing KGEU and KGYR ATC assigned only.

**TOP ALTITUDE:
 ASSIGNED BY ATC**



TAKEOFF MINIMUMS

Rwys 12L/C/R: Standard with a minimum climb of 250' per NM to 3100.
 Rwys 30L/C/R: Standard.



DEPARTURE ROUTE DESCRIPTION

TAKEOFF RUNWAYS 12L/C/R: Climb heading 124° or as assigned by ATC, thence. . . .
TAKEOFF RUNWAYS 30L/C/R: Climb heading 304° or as assigned by ATC, thence. . . .

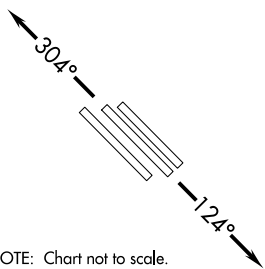
. . . .expect RADAR vectors to FORPE, then on track 055° to LALUZ, then on (transition).
 Maintain ATC assigned altitude, expect filed altitude 3 minutes after departure.

ALBUQUERQUE TRANSITION (LALUZ6.ABQ)

MAXXO TRANSITION (LALUZ6.MAXXO)

ST JOHNS TRANSITION (LALUZ6.SJN)

NOTE: Chart not to scale.



(LALUZ6.LALUZ) 18144
 LALUZ SIX DEPARTURE (RNAV)

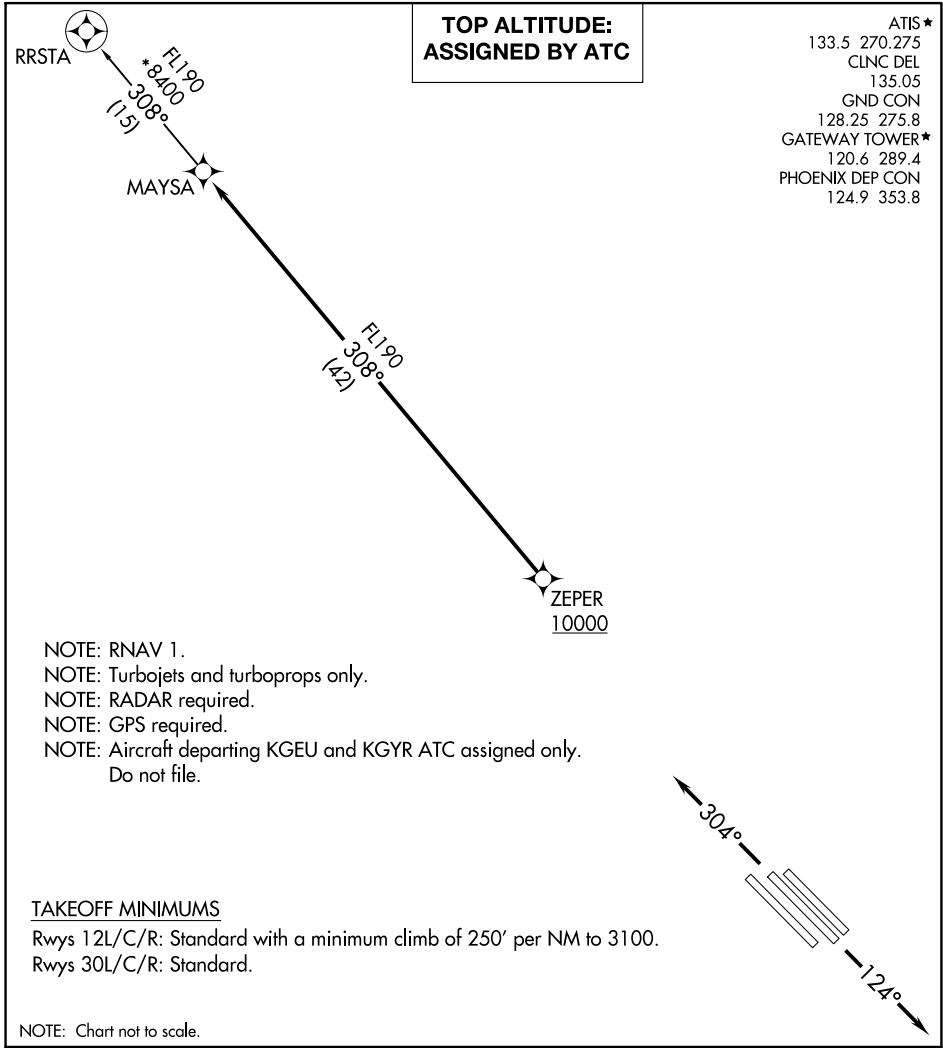
AL-74 (FAA)

PHOENIX-MESA GATEWAY (TWA)
 PHOENIX, ARIZONA

(MAYSA7.MAYSA) 20142

MAYSA SEVEN DEPARTURE (RNAV) AL-74 (FAA)

PHOENIX-MESA GATEWAY (IWA)
PHOENIX, ARIZONA



SW-4, 22 FEB 2024 to 21 MAR 2024

SW-4, 22 FEB 2024 to 21 MAR 2024



DEPARTURE ROUTE DESCRIPTION

TAKEOFF RUNWAYS 12L/C/R: Climb on heading 124° or as assigned by ATC. Thence. . .

TAKEOFF RUNWAYS 30L/C/R: Climb on heading 304° or as assigned by ATC. Thence. . .

. . . expect RADAR vectors to cross ZEPER at or above 10000, then on track 308° to MAYSA, then on RRSTA TRANSITION. Maintain ATC assigned altitude, expect filed altitude 3 minutes after departure.

RRSTA TRANSITION (MAYSA7.RRSTA)

MAYSA SEVEN DEPARTURE (RNAV)
(MAYSA7.MAYSA) 21MAY20

PHOENIX, ARIZONA
PHOENIX-MESA GATEWAY (IWA)

SNOBL SIX DEPARTURE (RNAV)

AL-74 (FAA)

PHOENIX-MESA GATEWAY (IWA)
PHOENIX, ARIZONA

GRAND CANYON

GCN



FL180

*9500

342°

(26)

RIMMM



FL180

*11500

343°

(10)

LOFTS



FL180

*11500

343°

(36)

CARTL



FL180

*9300

343°

(20)

SNOBL



FL180

*8100

343°

(20)

QUAKY



14600

- NOTE: RNAV 1.
- NOTE: Turbojets and turboprops only.
- NOTE: RADAR required.
- NOTE: GPS required.
- NOTE: JARPA TRANSITION ATC assigned only.
- NOTE: YOOPR TRANSITION ATC assigned only.
- NOTE: CARTL TRANSITION for FLG or PGA terminal arrivals only.
- NOTE: Aircraft departing KGEU and KGYR ATC assigned only.

- ATIS* 133.5 270.275
- CLNC DEL 135.05
- GND CON 128.25 275.8
- GATEWAY TOWER* 120.6 289.4
- PHOENIX DEP CON 124.9 353.8

**TOP ALTITUDE:
ASSIGNED BY ATC**

▼ DEPARTURE ROUTE DESCRIPTION

TAKEOFF RUNWAYS 12L/C/R: Climb heading 124° or as assigned by ATC, thence. . . .

TAKEOFF RUNWAYS 30L/C/R: Climb heading 304° or as assigned by ATC, thence. . . .

. . . .expect RADAR vectors to QUAKY, then on track 343° to SNOBL, then on (transition). Maintain ATC assigned altitude, expect filed altitude 3 minutes after departure.

CARTL TRANSITION (SNOBL6.CARTL)

GRAND CANYON TRANSITION (SNOBL6.GCN)

JARPA TRANSITION (SNOBL6.JARPA)

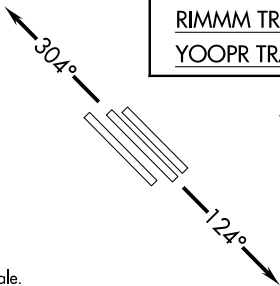
RIMMM TRANSITION (SNOBL6.RIMMM)

YOOPR TRANSITION (SNOBL6.YOOPR)

TAKEOFF MINIMUMS

Rwys 12L/C/R: Standard with a minimum climb of 250' per NM to 3100.

Rwys 30L/C/R: Standard.



NOTE: Chart not to scale.

SW-4, 22 FEB 2024 to 21 MAR 2024

SW-4, 22 FEB 2024 to 21 MAR 2024

SNOBL SIX DEPARTURE (RNAV)

(YOTES6.YOTES) 18144

YOTES SIX DEPARTURE (RNAV)

AL-74 (FAA)

PHOENIX-MESA GATEWAY (IWA)
PHOENIX, ARIZONA

ATIS ★
133.5 270.275
CLNC DEL
135.05
GND CON
128.25 275.8
GATEWAY TOWER ★
120.6 289.4
PHOENIX DEP CON
124.9 353.8

GRAND CANYON
GCN

YOOPR

JARPA

FL180
*9400
016°
(70)

FL180
*9300
033°
(92)

FL180
*14900
031°
(95)

FL180
*10300
021°
(44)

MRBIL

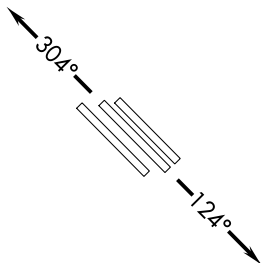
YOTES

**TOP ALTITUDE:
ASSIGNED BY ATC**

- NOTE: RNAV 1.
- NOTE: Turbojets and turboprops only.
- NOTE: RADAR required.
- NOTE: GPS required.
- NOTE: GCN TRANSITION ATC assigned only.
- NOTE: Aircraft departing KGEU and KGYR ATC assigned only.

TAKEOFF MINIMUMS

Rwys 12L/C/R: Standard with a minimum climb of 250' per NM to 3100.
Rwys 30L/C/R: Standard.



NOTE: Chart not to scale.



DEPARTURE ROUTE DESCRIPTION

TAKEOFF RUNWAYS 12L/C/R: Climb heading 124° or as assigned by ATC, thence. . . .

TAKEOFF RUNWAYS 30L/C/R: Climb heading 304° or as assigned by ATC, thence. . . .

. . . .expect RADAR vectors to MRBIL, then on track 021° to YOTES, then on (transition).
Maintain ATC assigned altitude, expect filed altitude 3 minutes after departure.

GRAND CANYON TRANSITION (YOTES6.GCN)

JARPA TRANSITION (YOTES6.JARPA)

YOOPR TRANSITION (YOTES6.YOOPR)

YOTES SIX DEPARTURE (RNAV)

(YOTES6.YOTES) 24MAY18

PHOENIX, ARIZONA
PHOENIX-MESA GATEWAY (IWA)

SW-4, 22 FEB 2024 to 21 MAR 2024

SW-4, 22 FEB 2024 to 21 MAR 2024