

MIAMI NINE DEPARTURE
(MIA9 MIA) 19MAY22

MIAMI NINE DEPARTURE
(MIA9 MIA) 23110

AL-5606 (FAA)

NORTH PERRY (HW'O)
HOLLYWOOD, FLORIDA

RADAR and DME required.

**TOP ALTITUDE:
ASSIGNED BY ATC**

ATIS 135.475
 GND CON 120.45 254.3
 NORTH PERRY TOWER *
 132.1 (CTAF) 254.3
 UNICOM 122.95
 MIAMI DEP CON
 119.45 290.325
 (ALTNN, BEECH, BINGOS,
 DORRL, FOLZZ, FLMGO,
 HURCN, ZFP)
 125.5 354.1
 (GWAVA, KETLL,
 MAYNR)

LEE COUNTY
 114.15 RSW
 Chan 88(Y)

PALM BEACH
 115.7 PBI
 Chan 104

FORT LAUDERDALE
 114.4 FLL
 Chan 91
 N26° 04.44' W80° 09.99'

FREEPORT
 113.2 ZFP
 Chan 79
 N26° 33.32' W78° 41.87'
 L-23, H-8

BIMINI
 116.7 ZBV
 Chan 114

VIRGINIA KEY
 117.1 VKZ
 Chan 118
 N25° 45.11' W80° 09.27'

DOLPHIN
 113.9 DHP
 Chan 86
 N25° 48.00' W80° 20.94'

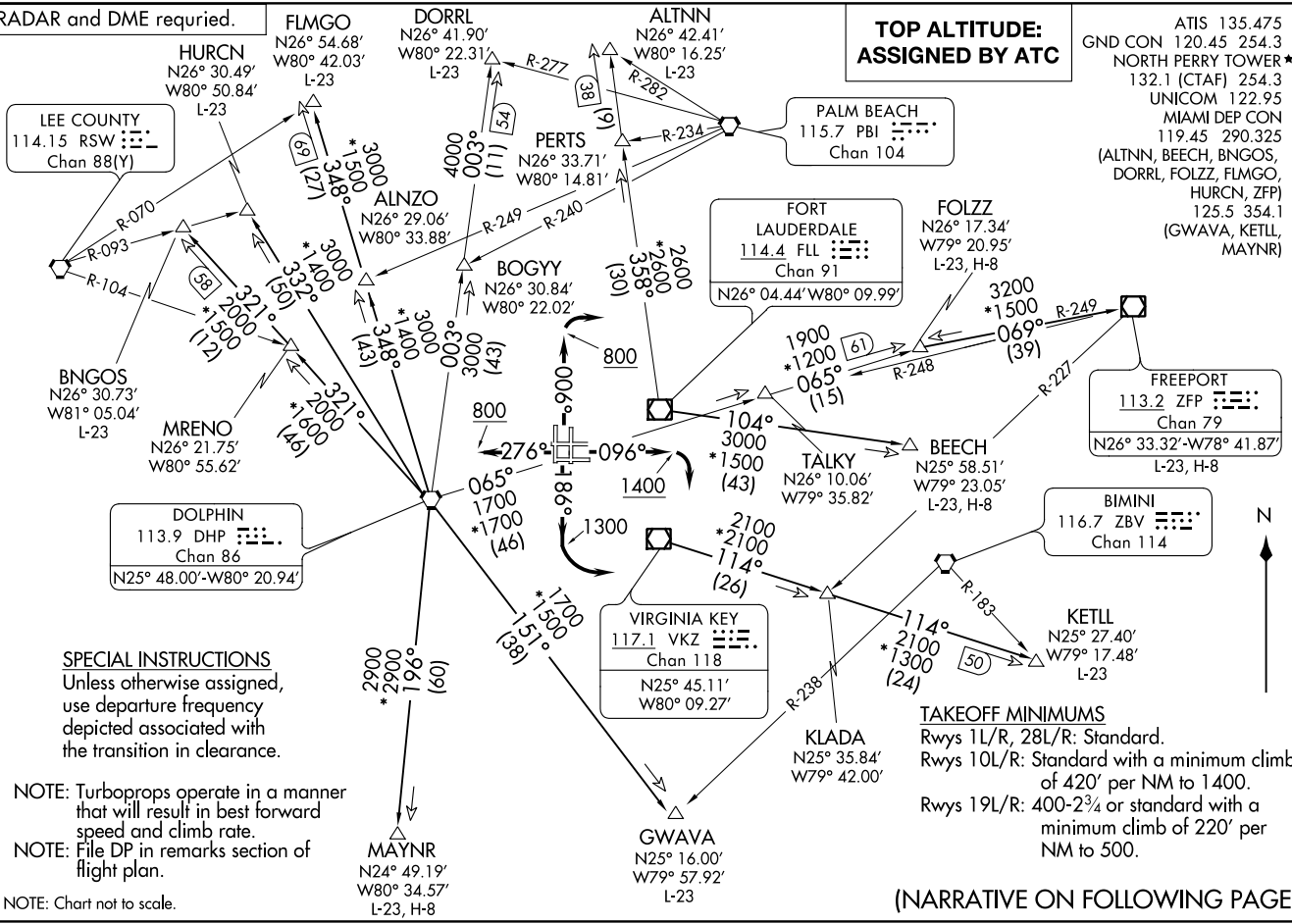
SPECIAL INSTRUCTIONS
 Unless otherwise assigned,
 use departure frequency
 depicted associated with
 the transition in clearance.

NOTE: Turboprops operate in a manner
 that will result in best forward
 speed and climb rate.
 NOTE: File DP in remarks section of
 flight plan.

NOTE: Chart not to scale.

TAKEOFF MINIMUMS
 Rws 1L/R, 28L/R: Standard.
 Rws 10L/R: Standard with a minimum climb
 of 420' per NM to 1400.
 Rws 19L/R: 400-2¾ or standard with a
 minimum climb of 220' per
 NM to 500.

(NARRATIVE ON FOLLOWING PAGE)



HOLLYWOOD, FLORIDA
NORTH PERRY (HW'O)

MIAMI NINE DEPARTURE



DEPARTURE ROUTE DESCRIPTION

TAKEOFF RUNWAY 1L/R: Climb on heading 006° to 800 before turning right, thence...
TAKEOFF RUNWAY 10L/R: Climb on heading 096° to 1400 before turning right, thence...
TAKEOFF RUNWAY 19L/R: Climb on heading 186° to 1300 before turning left, thence...
TAKEOFF RUNWAY 28L/R: Climb on heading 276° to 800, thence...

... maintain 2000 or assigned higher altitude for RADAR vectors to appropriate transition.
 Expect further clearance to filed altitude ten (10) minutes after departure.

ALTNN TRANSITION (MIA9.ALTNN): From over FLL VOR/DME on FLL R-358 to ALTNN.

BEECH TRANSITION (MIA9.BEECH): From over FLL VOR/DME on FLL R-104 to BEECH.

BNGOS TRANSITION (MIA9.BNGOS): From over DHP VORTAC on DHP R-321 to BNGOS.

DORRL TRANSITION (MIA9.DORRL): From over DHP VORTAC on DHP R-003 to DORRL.

FLMGO TRANSITION (MIA9.FLMGO): From over DHP VORTAC on DHP R-348 to FLMGO.

FOLZZ TRANSITION (MIA9.FOLZZ): From over DHP VORTAC on DHP R-065 to FOLZZ.

FREEPORT TRANSITION (MIA9.ZFP): From over DHP VORTAC on DHP R-065 to FOLZZ then on ZFP R-249 to ZFP VOR/DME.

GWAVA TRANSITION (MIA9.GWAVA): From over DHP VORTAC on DHP R-151 to GWAVA.

HURCN TRANSITION (MIA9.HURCN): From over DHP VORTAC on DHP R-332 to HURCN.

KETLL TRANSITION (MIA9.KETLL): From over VKZ VOR/DME on VKZ R-114 to KETLL.

MAYNR TRANSITION (MIA9.MAYNR): From over DHP VORTAC on DHP R-196 to MAYNR.

SE-3, 22 FEB 2024 to 21 MAR 2024

SE-3, 22 FEB 2024 to 21 MAR 2024