

(AZALA4.AZALA) 23166

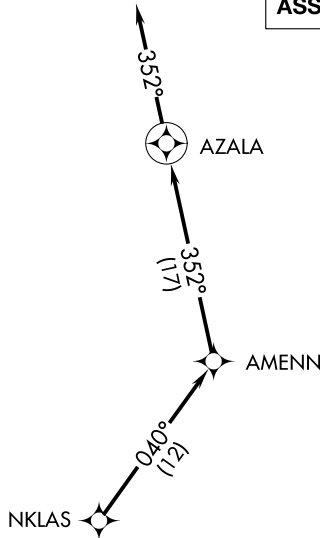
AL-6201 (FAA)

THOMSON-McDUFFIE COUNTY (HQU)
THOMSON, GEORGIA

AZALA FOUR DEPARTURE (RNAV)

AUGUSTA DEP CON ★
124.45 270.3
CTAF
122.8

**TOP ALTITUDE:
ASSIGNED BY ATC**



TAKEOFF MINIMUMS:

- Rwy 10: Standard.
- Rwy 28: 200-1¼ or standard with minimum climb of 235' per NM to 700, or alternatively, with standard takeoff minimums and a normal 200' per NM climb gradient, takeoff must occur no later than 1900' prior to DER.

- NOTE: RADAR and GPS required.
- NOTE: RNAV 1.
- NOTE: Do not exceed 250K until advised by ATC.
- NOTE: For prop aircraft during Masters golf tournament week only.

NOTE: Chart not to scale.



DEPARTURE ROUTE DESCRIPTION

TAKEOFF RWY 10, 28: Climb on assigned heading for RADAR vectors to NKLAS. Then on depicted route to AZALA, then fly heading 352°, for RADAR vectors, thence. . . .

. . . .maintain altitude assigned by ATC. Expect clearance to filed altitude/flight level within 10 minutes after departure.

AZALA FOUR DEPARTURE (RNAV)
(AZALA4.AZALA) 19JUL18

THOMSON, GEORGIA
THOMSON-McDUFFIE COUNTY (HQU)

SE-4, 22 FEB 2024 to 21 MAR 2024

SE-4, 22 FEB 2024 to 21 MAR 2024

(CHATT6.CHATT) 23166

AL-6201 (FAA)

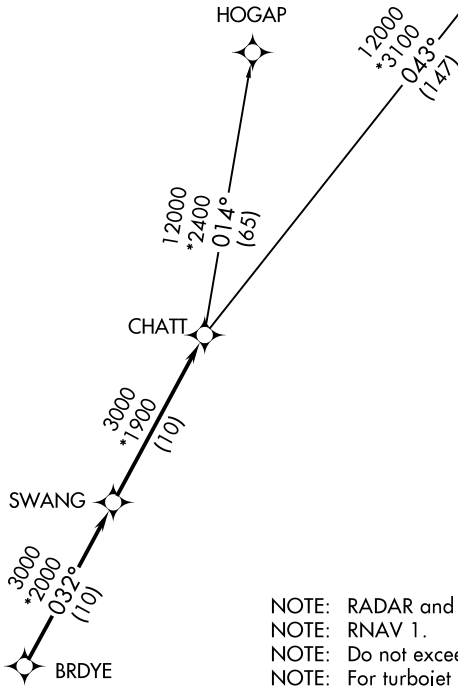
THOMSON-McDUFFIE COUNTY (HQU)
THOMSON, GEORGIA

CHATT SIX DEPARTURE (RNAV)

AUGUSTA DEP CON ★
124.45 270.3
CTAF
122.8
AWOS-3
120.625

GREENSBORO
GSO

**TOP ALTITUDE:
ASSIGNED BY ATC**



TAKEOFF MINIMUMS:
Rwys 10, 28: Standard.

- NOTE: RADAR and GPS required.
- NOTE: RNAV 1.
- NOTE: Do not exceed 250K until advised by ATC.
- NOTE: For turbojet aircraft during Masters golf tournament week.

NOTE: Chart not to scale.



DEPARTURE ROUTE DESCRIPTION

TAKEOFF RUNWAY 10, 28: Climb on assigned heading for RADAR vectors to BRDYE, then on depicted route to CHATT, thence. . . .

. . . .maintain altitude assigned by ATC. Expect clearance to filed altitude/flight level within 10 minutes after departure.

GREENSBORO TRANSITION (CHATT6.GSO)
HOGAP TRANSITION (CHATT6.HOGAP)

CHATT SIX DEPARTURE (RNAV)

(CHATT6.CHATT) 29MAR18

THOMSON, GEORGIA
THOMSON-McDUFFIE COUNTY (HQU)

SE-4, 22 FEB 2024 to 21 MAR 2024

SE-4, 22 FEB 2024 to 21 MAR 2024

(MISTY6.HADOC) 23166

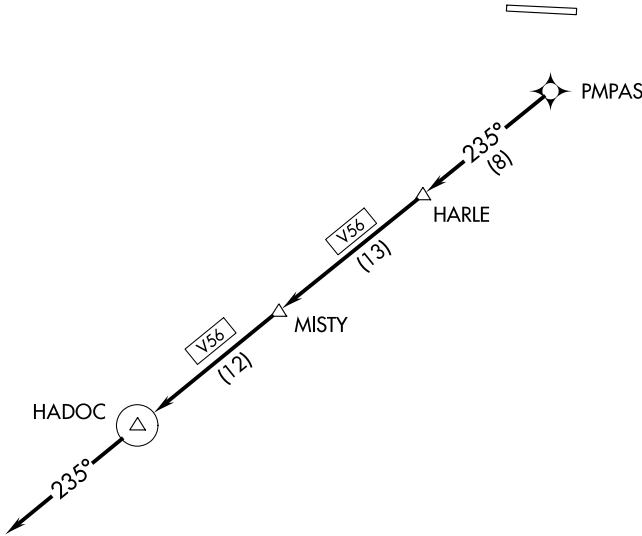
AL-6201 (FAA)

THOMSON-McDUFFIE COUNTY (HQU)
THOMSON, GEORGIA

MISTY SIX DEPARTURE (RNAV)

AUGUSTA DEP CON ★
124.45 270.3
CTAF
122.8

**TOP ALTITUDE:
ASSIGNED BY ATC**



TAKEOFF MINIMUMS

Rwy 10: Standard.

Rwy 28: 200-1¼ or standard with minimum climb of 235' per NM to 700, or alternatively, with standard takeoff minimums and a normal 200' per NM climb gradient, takeoff must occur no later than 1900' prior to DER.

NOTE: RADAR and GPS required.

NOTE: RNAV 1.

NOTE: Do not exceed 250K until advised by ATC.

NOTE: For turbojet aircraft only.

NOTE: For use during Masters golf tournament week only.

NOTE: Chart not to scale.



DEPARTURE ROUTE DESCRIPTION

TAKEOFF RWY 10, 28: Climb on assigned heading for RADAR vectors to PMPAS. Then on depicted route to HADOC, then fly heading 235°, for RADAR vectors. Thence. . . .

. . . .maintain altitude assigned by ATC. Expect clearance to filed altitude/flight level within 10 minutes after departure.

MISTY SIX DEPARTURE (RNAV)
(MISTY6.HADOC) 19JUL18

THOMSON, GEORGIA
THOMSON-McDUFFIE COUNTY (HQU)

SE-4, 22 FEB 2024 to 21 MAR 2024

SE-4, 22 FEB 2024 to 21 MAR 2024

(NDINA5.NDINA) 23166

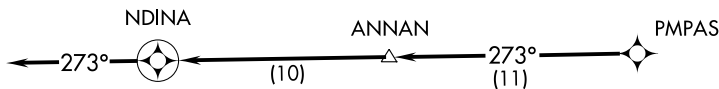
AL-6201 (FAA)

THOMSON-McDUFFIE COUNTY (HQU)
THOMSON, GEORGIA

NDINA FIVE DEPARTURE (RNAV)

AUGUSTA DEP CON ★
124.45 270.3
CTAF
122.8

**TOP ALTITUDE:
ASSIGNED BY ATC**



TAKEOFF MINIMUMS:

Rwy 10: Standard.

Rwy 28: 200-1¼ or standard with minimum climb of 235' per NM to 700, or alternatively, with standard takeoff minimums and a normal 200' per NM climb gradient, takeoff must occur no later than 1900' prior to DER.

NOTE: RADAR and GPS required.

NOTE: RNAV 1.

NOTE: Do not exceed 250K until advised by ATC.

NOTE: For prop aircraft during Masters golf tournament week only.

NOTE: Chart not to scale.



DEPARTURE ROUTE DESCRIPTION

TAKEOFF RWY 10, 28: Climb on assigned heading for RADAR vectors to PMPAS. Then on depicted route to NDINA, then fly heading 273°, for RADAR vectors. . . .

. . . .maintain altitude assigned by ATC. Expect clearance to filed altitude/flight level within 10 minutes after departure.

NDINA FIVE DEPARTURE (RNAV)

(NDINA5.NDINA) 19JUL18

THOMSON, GEORGIA
THOMSON-McDUFFIE COUNTY (HQU)

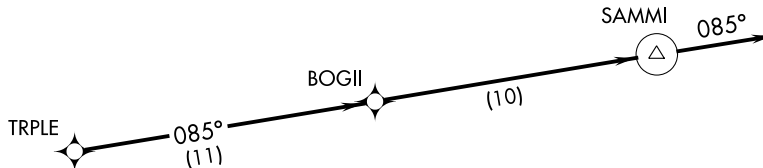
SE-4, 22 FEB 2024 to 21 MAR 2024

SE-4, 22 FEB 2024 to 21 MAR 2024

AUGUSTA DEP CON ★
126.8 270.3
CTAF
122.8

**TOP ALTITUDE:
ASSIGNED BY ATC**

TAKEOFF MINIMUMS:
Rwys 10, 28: Standard.



NOTE: RADAR and GPS required.
NOTE: RNAV 1.
NOTE: Do not exceed 250K until advised by ATC.

NOTE: Chart not to scale.

DEPARTURE ROUTE DESCRIPTION

TAKEOFF RWY 10, 28: Climb on assigned heading for RADAR vectors to TRPLE. Then on depicted route to SAMMI. Then on heading 085° for RADAR vectors. Thence. . .

. . . maintain altitude assigned by ATC. Expect clearance to filed altitude/flight level within 10 minutes after departure.

SAMMI FOUR DEPARTURE (RNAV)
(SAMM14, SAMM1) 29MART8

THOMSON-McDUFFIE COUNTY (HQT)
THOMSON, GEORGIA

SAMMI FOUR DEPARTURE (RNAV)
(SAMM14, SAMM1) 18088

AL-6201 (FAA)
THOMSON-McDUFFIE COUNTY (HQT)
THOMSON, GEORGIA