

LOC/DME I-HUB 109.9 Chan 36	APP CRS 041°	Rwy Idg 7602 TDZE 44 Apt Elev 46
---	------------------------	---

ILS RWY 4 (CAT II & III)

WILLIAM P HOBBY (HOU)

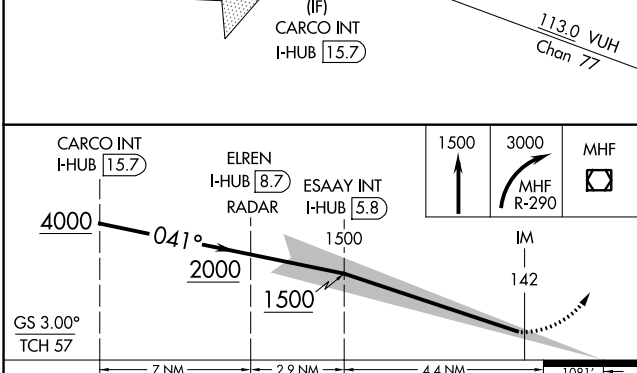
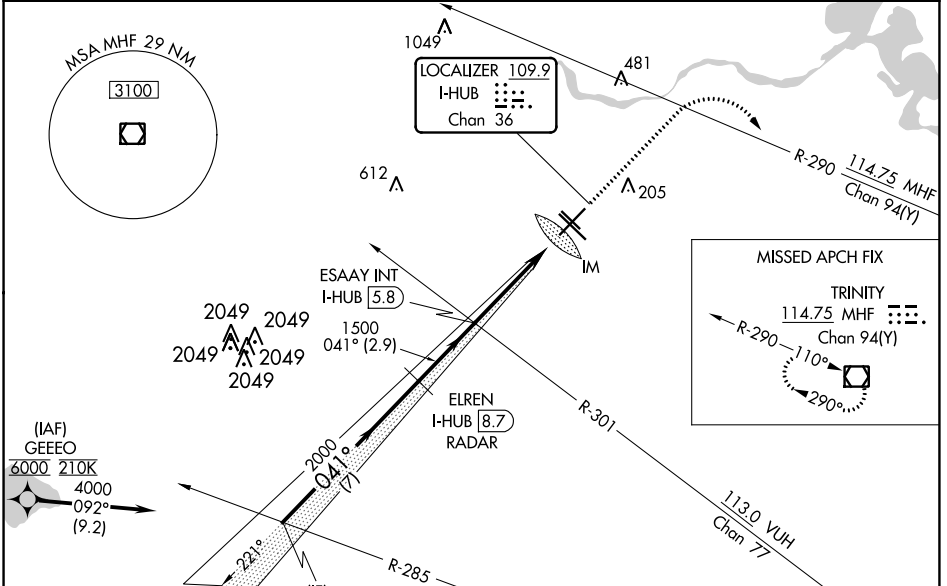
Aircraft not GPS equipped - RADAR required for procedure entry.
From GEEEO: RNAV 1- GPS required.

ALSF-2

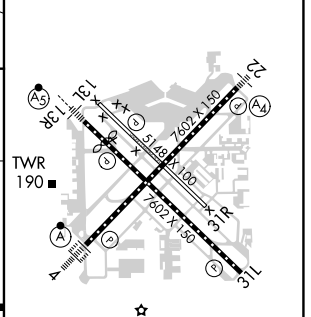
MISSED APPROACH: Climb to 1500 then climbing right turn to 3000 on MHF VOR/DME R-290 to MHF VOR/DME and hold.

CAT II: RVR 1000 authorized with specific OPSPEC, MSPEC, or LOA approval and use of autoland or HUD to touchdown.

D-ATIS 124.6	HOUSTON APP CON 120.05 379.1 EAST 124.35 316.15 WEST	HOBBY TOWER 118.7 256.9	GND CON 121.9	CLNC DEL 125.45	CPDLC
------------------------	--	--	-------------------------	---------------------------	-------



ELEV 46	D TDZE 44
---------	------------------



CATEGORY	A	B	C	D
S-ILS 4	CAT II RA 100/12 100 DA 144			
S-ILS 4	CAT III RVR 06			

CATEGORY II & III ILS - SPECIAL AIRCREW & AIRCRAFT CERTIFICATION REQUIRED

SC-5, 22 FEB 2024 to 21 MAR 2024

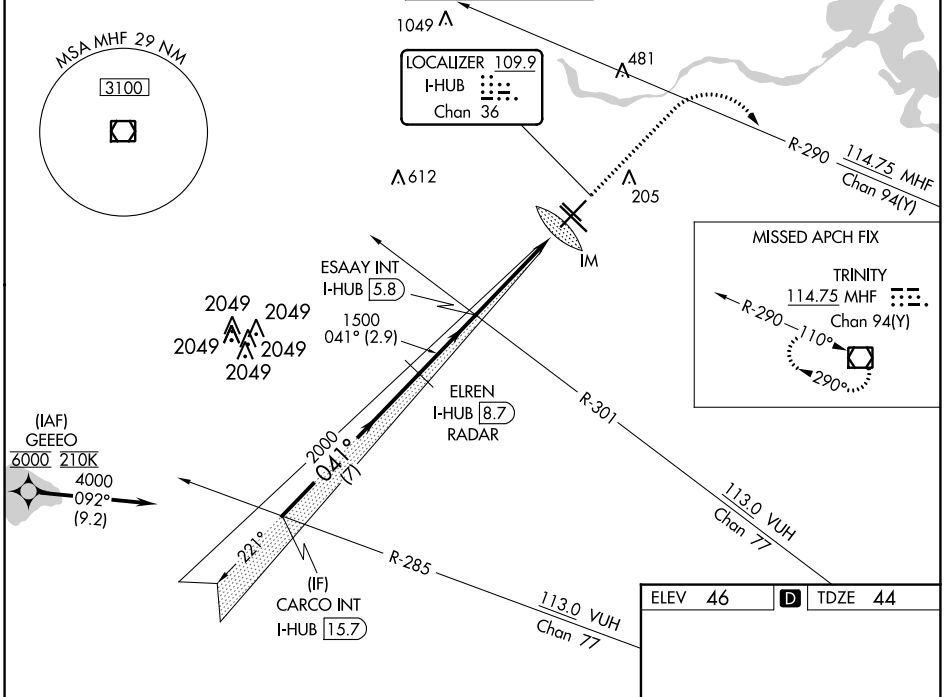
SC-5, 22 FEB 2024 to 21 MAR 2024

LOC/DME I-HUB 109.9 Chan 36	APP CRS 041°	Rwy Idg 7602 TDZE 44 Apt Elev 46
---	------------------------	---

ILS RWY 4 (SA CAT I)

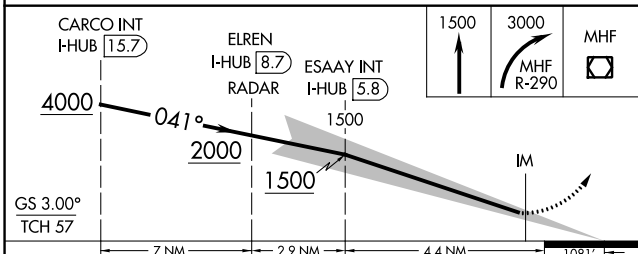
WILLIAM P HOBBY (HOU)

Aircraft not GPS equipped - RADAR required for procedure entry. From GEEEO: RNAV 1- GPS required.		ALSF-2 	MISSED APPROACH: Climb to 1500 then climbing right turn to 3000 on MHF VOR/DME R-290 to MHF VOR/DME and hold.		
Requires specific OPSPEC, MSPEC, or LOA approval and use of HUD to DH.					
D-ATIS 124.6	HOUSTON APP CON 120.05 379.1 EAST 124.35 316.15 WEST	HOBBY TOWER 118.7 256.9	GND CON 121.9	CLNC DEL 125.45	CPDLC

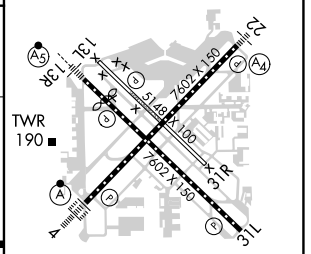


SC-5, 22 FEB 2024 to 21 MAR 2024

SC-5, 22 FEB 2024 to 21 MAR 2024



ELEV 46	D TDZE 44
---------	------------------



CATEGORY	A	B	C	D
S-ILS 4	RA 146/14		150 DA 194	

SA CATEGORY I ILS - SPECIAL AIRCREW & AIRCRAFT CERTIFICATION REQUIRED

REIL Rwy 31L
MIRL Rwy 13L-31R
HIRL Rws 4-22 and 13R-31L
TDZ/CL Rws 4, 13R and 31L

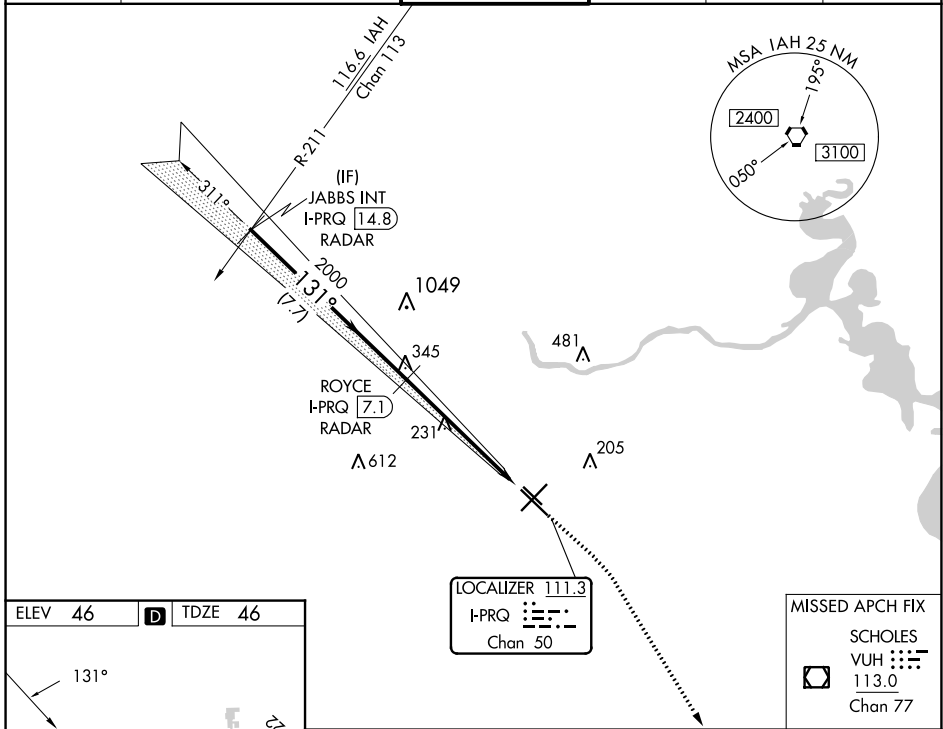
LOC/DME I-PRQ 111.3 Chan 50	APP CRS 131°	Rwy Idg 6568 TDZE 46 Apt Elev 46
---	------------------------	---

ILS or LOC RWY 13R

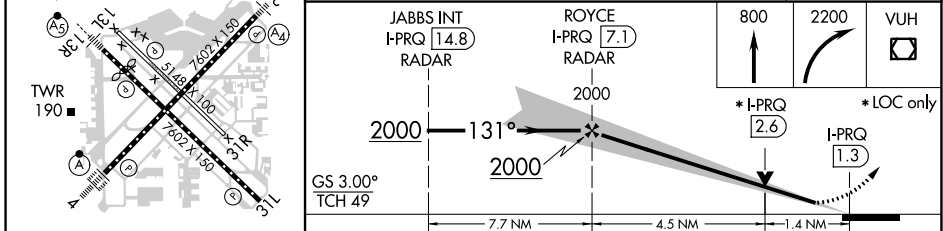
WILLIAM P HOBBY (HOU)

RADAR or DME required for LOC only. RADAR required for procedure entry.		MALSR 	MISSED APPROACH: Climb to 800 then climbing right turn to 2200 direct VUH VOR/DME.
<p>▼ Inop table does not apply to S-ILS Rwy 13R. Rwy 13R helicopter visibility reduction below 3/4 SM NA. For inop ALS, increase S-LOC 13R Cats A/B visibility to RVR 5500, Cats C/D/E to 1 3/4 SM.</p> <p>▲</p>			

D-ATIS 124.6	HOUSTON APP CON 120.05 379.1 EAST 124.35 316.15 WEST	HOBBY TOWER 118.7 256.9	GND CON 121.9	CLNC DEL 125.45	CPDLC
------------------------	--	-----------------------------------	-------------------------	---------------------------	-------



ELEV 46	D	TDZE 46
---------	----------	---------



CATEGORY	A	B	C	D	E
S-ILS 13R	296/40 250 (300-3/4)				
S-LOC 13R	540/40	494 (500-3/4)	540/50	494 (500-1)	540/60 494 (500-1 1/4)
C CIRCLING	540-1	494 (500-1)	740-2 1/4	694 (700-2 1/4)	860-3 814 (900-3)

SC-5, 22 FEB 2024 to 21 MAR 2024

SC-5, 22 FEB 2024 to 21 MAR 2024

LOC/DME I-UPU 111.3 Chan 50	APP CRS 311°	Rwy Idg 7602 TDZE 43 Apt Elev 46
---	------------------------	---

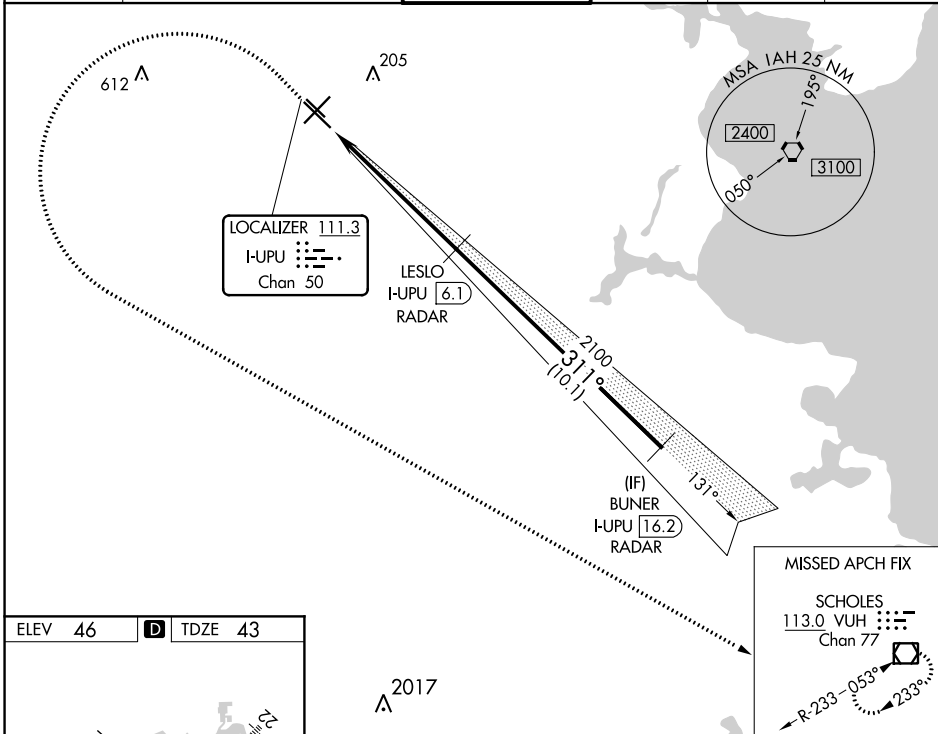
ILS or LOC RWY 31L

WILLIAM P HOBBY (HOU)

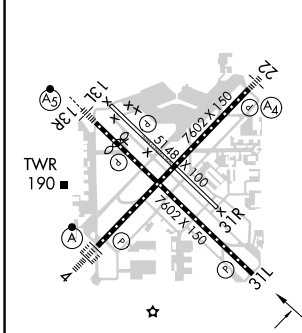
RADAR or DME required for LOC only.
RADAR required for procedure entry.

MISSED APPROACH: Climb to 1000 then climbing left turn to 3000 direct VUH VOR/DME and hold.

D-ATIS 124.6	HOUSTON APP CON 120.05 379.1 EAST 124.35 316.15 WEST	HOBBY TOWER 118.7 256.9	GND CON 121.9	CLNC DEL 125.45	CPDLC
------------------------	--	-----------------------------------	-------------------------	---------------------------	-------



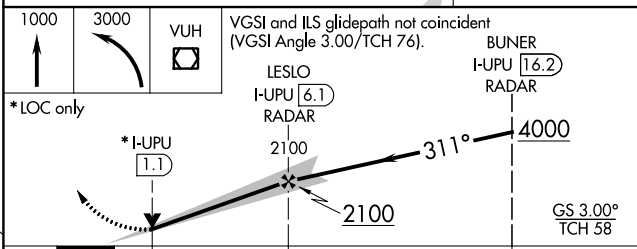
ELEV 46	D	TDZE 43
---------	----------	---------



REIL Rwy 31L
MIRL Rwy 13L-31R
HIRL Rwys 4-22 and 13R-31L
TDZ/CL Rwys 4, 13R and 31L

FAF to MAP 6.3 NM

Knots	60	90	120	150	180
Min:Sec	6:18	4:12	3:09	2:31	2:06



CATEGORY	A	B	C	D
S-ILS 31L	243/40		200 (200-3/4)	
S-LOC 31L	520/55	477 (500-1)	520-1 3/8	477 (500-1 3/8)
C CIRCLING	520-1	474 (500-1)	740-2 1/4	694 (700-2 1/4)

SC-5, 22 FEB 2024 to 21 MAR 2024

SC-5, 22 FEB 2024 to 21 MAR 2024

LOC/DME I-HUB 109.9 Chan 36	APP CRS 041°	Rwy Idg 7602 TDZE 44 Apt Elev 46
---	------------------------	---

ILS or LOC RWY 4

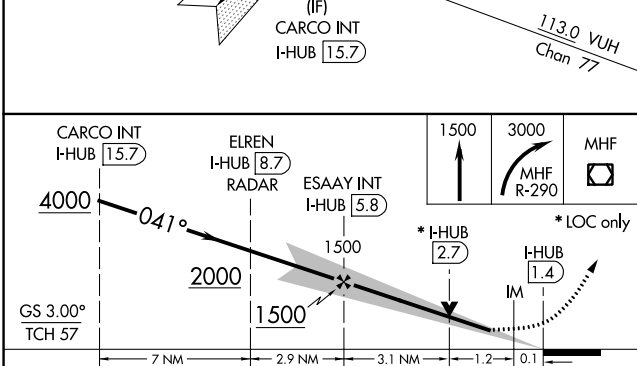
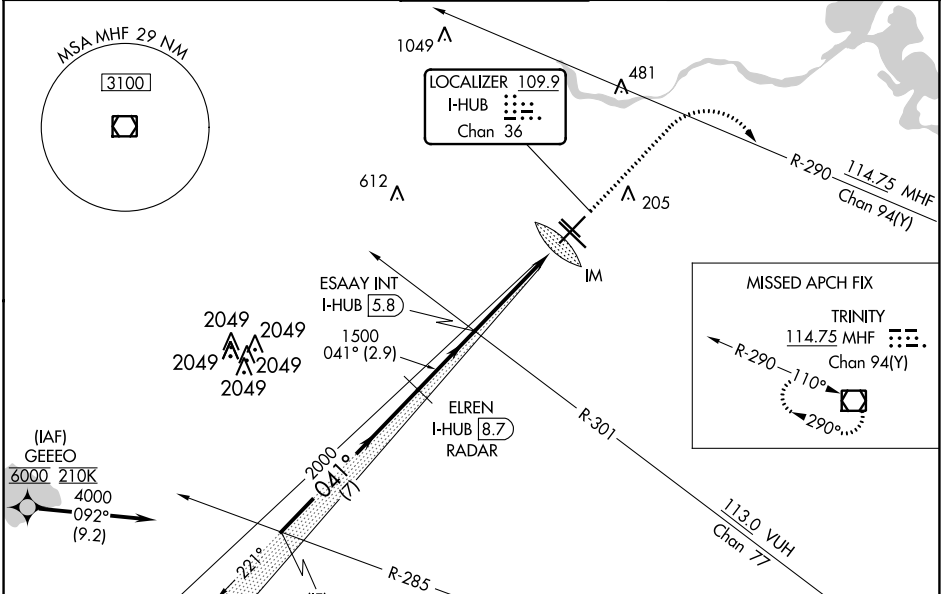
WILLIAM P HOBBY (HOU)

Aircraft not GPS equipped - RADAR required for procedure entry.
From GEEEO: RNAV 1 - GPS required.

ALSF-2 MISSED APPROACH: Climb to 1500 then climbing right turn to 3000 on MHF VOR/DME R-290 to MHF VOR/DME and hold.

For inop ALSF-2, increase S-ILS 4 Cat E visibility to RVR 4000;
 S-LOC 4 Cat C/D/E visibility to 1 1/2.

D-ATIS 124.6	HOUSTON APP CON 120.05 379.1 EAST 124.35 316.15 WEST	HOBBY TOWER 118.7 256.9	GND CON 121.9	CLNC DEL 125.45	CPDLC
------------------------	--	-----------------------------------	-------------------------	---------------------------	-------



ELEV 46	TDZE 44
---------	---------

TWR 190

REIL Rwy 31L
MIRL Rwy 13L-31R
HIRL Rws 4-22 and 13R-31L
TDZ/CL Rws 4, 13R and 31L

FAF to MAP 4.4 NM

Knots	60	90	120	150	180
Min:Sec	4:24	2:56	2:12	1:46	1:28

CATEGORY	A	B	C	D	E
S-ILS 4	244/18 200 (200-1/2)				
S-LOC 4	520/24	476 (500-1/2)	520/50 476 (500-1)		
CIRCLING	520-1	474 (500-1)	740-2 1/4	694 (700-2 1/4)	860-3 814 (900-3)

SC-5, 22 FEB 2024 to 21 MAR 2024

SC-5, 22 FEB 2024 to 21 MAR 2024

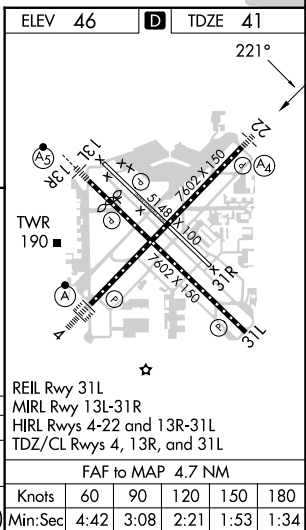
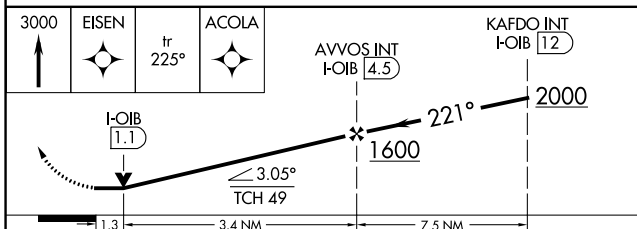
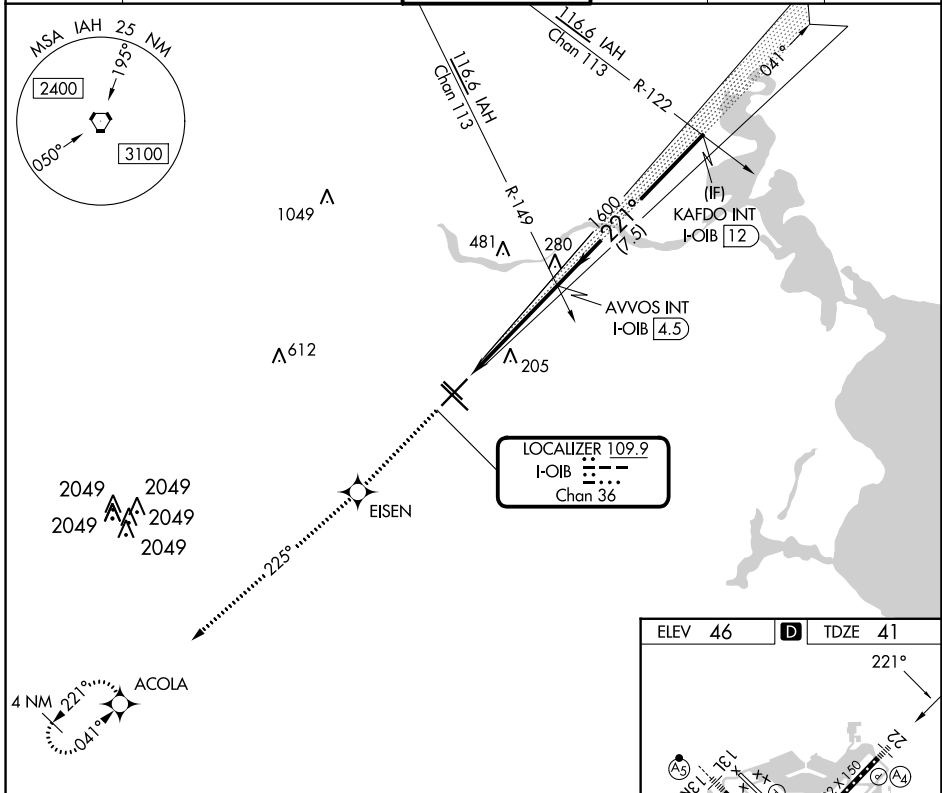
LOC/DME I-OIB 109.9 Chan 36	APP CRS 221°	Rwy Idg 7602 TDZE 41 Apt Elev 46
---	------------------------	---

LOC RWY 22

WILLIAM P HOBBY (HOU)

RNAV 1-GPS required. RADAR required for procedure entry.		MALS 	MISSED APPROACH: Climb to 3000 direct EISEN and on track 225° to ACOLA and hold.	
 For inop ALS, increase S-LOC 22 Cat C/D/E visibility to 1 3/8 SM.				

D-ATIS 124.6	HOUSTON APP CON 120.05 379.1 EAST 124.35 316.15 WEST	HOBBY TOWER 118.7 256.9	GND CON 121.9	CLNC DEL 125.45	CPDLC
------------------------	--	-----------------------------------	-------------------------	---------------------------	-------



CATEGORY	A	B	C	D	E
S-LOC 22	500-3/4	459 (500-3/4)	500-1	459 (500-1)	
C CIRCLING	500-1 454 (500-1)	520-1 474 (500-1)	540-1 1/2 494 (500-1 1/2)	740-2 1/4 694 (700-2 1/4)	820-2 3/4 774 (800-2 3/4)

SC-5, 22 FEB 2024 to 21 MAR 2024

SC-5, 22 FEB 2024 to 21 MAR 2024

WAAS CH 70310 W13A	APP CRS 131°	Rwy ldg 6568 TDZE 46 Apt Elev 46
--	------------------------	---

RNAV (GPS) RWY 13R

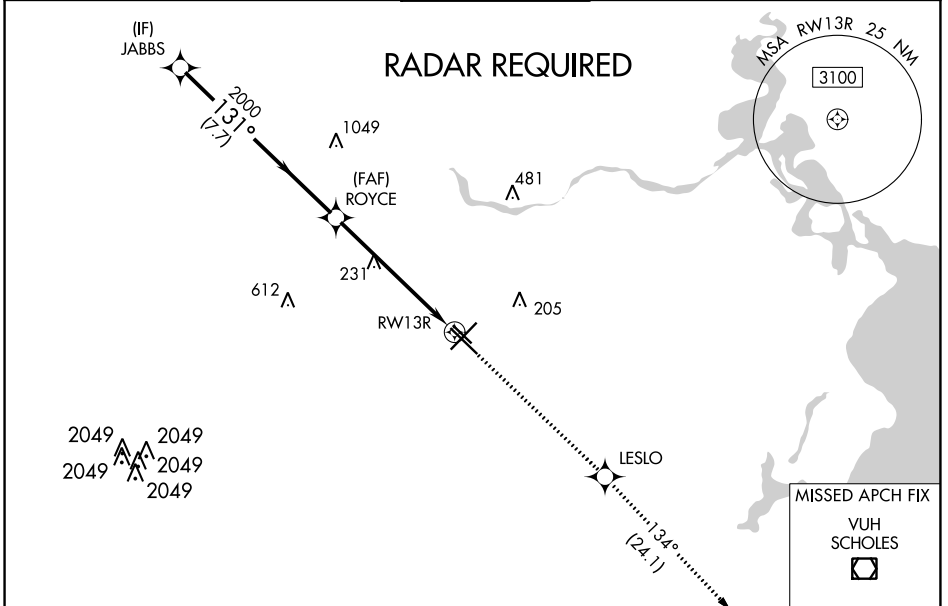
WILLIAM P HOBBY (HOU)

▽ For uncompensated Baro-VNAV systems, LNAV/VNAV NA below -15°C or above 54°C. DME/DME RNP-0.3 NA. For inop ALS, increase LPV all Cats visibility to RVR 5000; increase LNAV/VNAV Cats A/B/C/D visibility to 1 $\frac{3}{8}$ SM, Cat E to 1 $\frac{1}{2}$ SM; and increase LNAV Cats A/B visibility to RVR 5500, Cats C/D to 1 $\frac{3}{8}$ SM, Cat E to 1 $\frac{3}{4}$ SM. Rwy 13R helicopter visibility reduction below $\frac{3}{4}$ SM NA.

MALSR

MISSED APPROACH: Climb to 2200 direct LESLO and on track 134° to VUH VOR/DME.

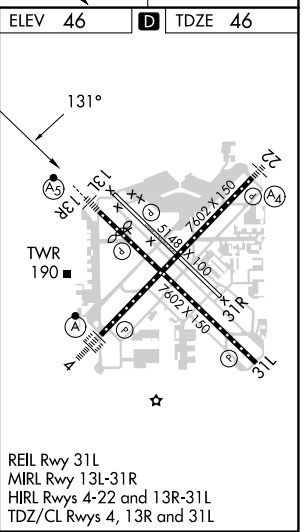
D-ATIS 124.6	HOUSTON APP CON 120.05 379.1 EAST 124.35 316.15 WEST	HOBBY TOWER 118.7 256.9	GND CON 121.9	CLNC DEL 125.45	CPDLC
------------------------	--	-----------------------------------	-------------------------	---------------------------	-------



SC-5, 22 FEB 2024 to 21 MAR 2024

SC-5, 22 FEB 2024 to 21 MAR 2024

ELEV 46	D TDZE 46				
JABBS	ROYCE	2200	LESLO	tr 134°	VUH
2000	2000	2000			
GP 3.00° TCH 49		* 1.4 NM to RWY 13R			
7.7 NM		4.5 NM		1.4 NM	
CATEGORY	A	B	C	D	E
LPV DA	330/40		284 (300- $\frac{3}{4}$)		
LNAV/VNAV DA	475/50		429 (500-1)		
LNAV MDA	540/40	494 (500- $\frac{3}{4}$)	540/50	494 (500-1)	540/60 494 (500-1 $\frac{1}{4}$)
C CIRCLING	540-1	494 (500-1)	740-2 $\frac{1}{4}$	694 (700-2 $\frac{1}{4}$)	860-3 814 (900-3)



HOUSTON, TEXAS

AL-198 (FAA)

24025

WAAS CH 65610 W22A	APP CRS 221°	Rwy Idg 7602 TDZE 41 Apt Elev 46
--	------------------------	---

RNAV (GPS) RWY 22

WILLIAM P HOBBY (HOU)

RNP APCH

∇ Inop table does not apply to LPV, LNAV/VNAV all Cats, and LNAV Cat C. For uncompensated Baro-VNAV systems, LNAV/VNAV NA below -15°C (5°F) or above 48°C (118°F).

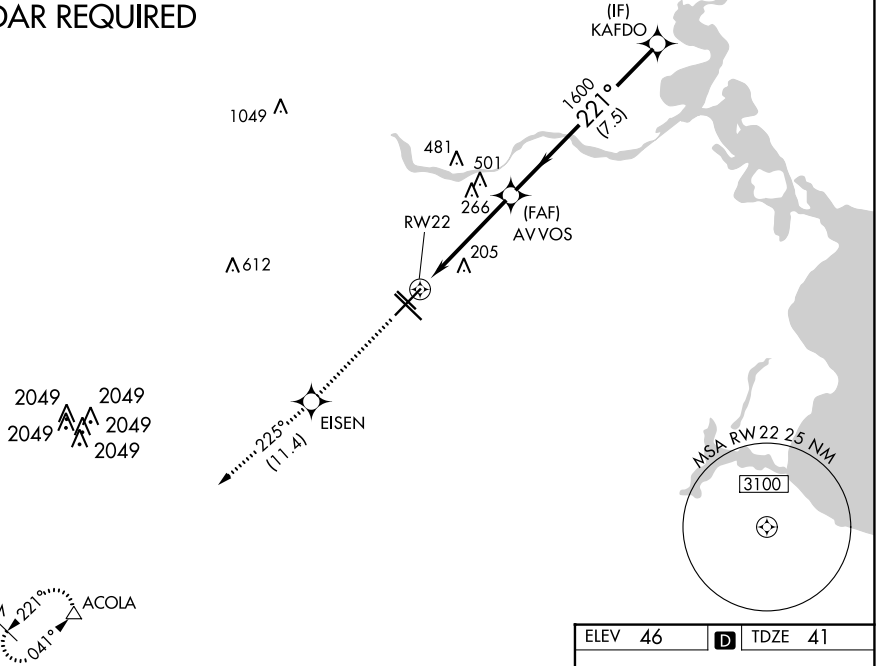
MALS



MISSED APPROACH: Climb to 3000 direct EISEN and on track 225° to ACOLA and hold.

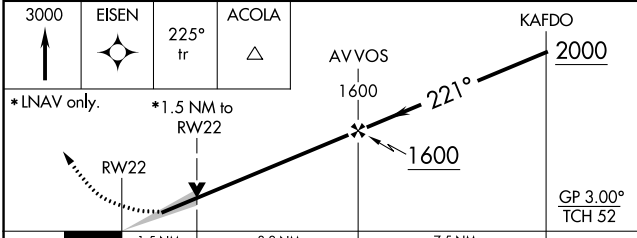
D-ATIS 124.6	HOUSTON APP CON 120.05 379.1 EAST 124.35 316.15 WEST	HOBBY TOWER 118.7 256.9	GND CON 121.9	CLNC DEL 125.45	CPDLC
------------------------	--	-----------------------------------	-------------------------	---------------------------	-------

RADAR REQUIRED



SC-5, 22 FEB 2024 to 21 MAR 2024

SC-5, 22 FEB 2024 to 21 MAR 2024



CATEGORY	A	B	C	D	E
LPV DA	360-1		319 (400-1)		
LNAV/VNAV DA	480-1½		439 (500-1½)		
LNAV MDA	580-¾	539 (600-¾)	580-1½ 539 (600-1½)	580-1¾ 539 (600-1¾)	580-2 539 (600-2)
CIRCLING	580-1	534 (600-1)	580-1½ 534 (600-1½)	740-2¼ 694 (700-2¼)	820-2¾ 774 (800-2¾)

ELEV 46	D TDZE 41
---------	------------------

TWR 190

REIL Rwy 31L
MIRL Rwy 13L-31R
HIRL Rws 4-22 and 13R-31L
TDZ/CL Rws 4, 13R and 31L

HOUSTON, TEXAS
Amdt 2C 23APR20

29°39'N-95°17'W

RNAV (GPS) RWY 22

WILLIAM P HOBBY (HOU)

WAAS CH 77510 W31A	APP CRS 311°	Rwy Idg 7602 TDZE 43 Apt Elev 46
--	------------------------	---

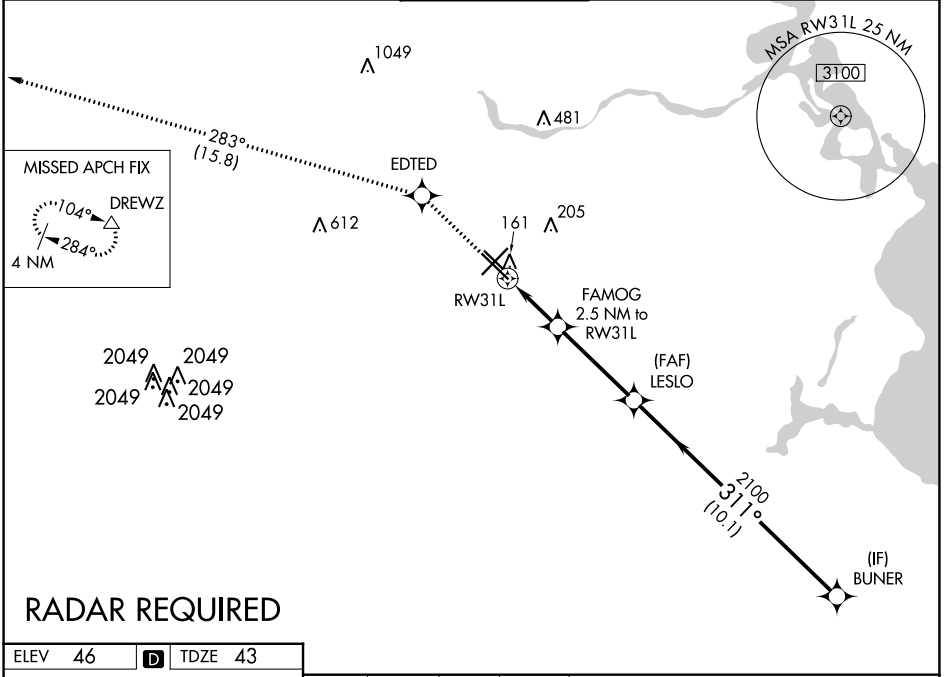
RNAV (GPS) RWY 31L

WILLIAM P HOBBY (HOU)

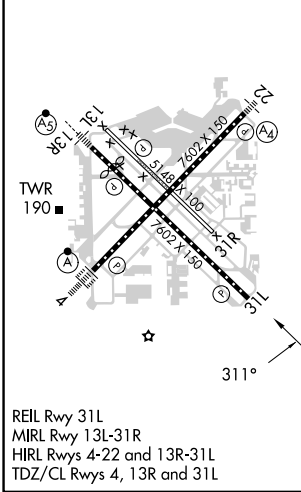
⚠ For uncompensated Baro-VNAV systems, LNAV/VNAV NA below -1.5°C (5°F) or above 43°C (109°F). DME/DME RNP-0.3 NA.

MISSED APPROACH: Climb to 2000 direct EDTED and on track 283° to DREWZ and hold.

D-ATIS 124.6	HOUSTON APP CON 120.05 379.1 EAST 124.35 316.15 WEST	HOBBY TOWER 118.7 256.9	GND CON 121.9	CLNC DEL 125.45	CPDLC
------------------------	--	-----------------------------------	-------------------------	---------------------------	-------



ELEV 46	D	TDZE 43
---------	----------	---------



2000	EDTED	DREWZ	VGSi and RNAV glidepath not coincident (VGSi Angle 3.00/TCH 76).	
↑	✦	tr 283°	BUNER	4000
*LNAV only.				
FAMOG 2.5 NM to RW31L *1.2 NM to RW31L LESLO 2100 *880 2100 311° GP 3.00° TCH 58				
1.2 NM 1.3 3.8 NM 10.1 NM				
CATEGORY	A	B	C	D
LPV DA	243/40		200 (200-¾)	
LNAV/VNAV DA	323/45		280 (300-⅞)	
LNAV MDA	500/55	457 (500-1)	500-1⅜	457 (500-1⅜)
C CIRCLING	500-1 454 (500-1)	520-1 474 (500-1)	740-2¼	694 (700-2¼)

SC-5, 22 FEB 2024 to 21 MAR 2024

SC-5, 22 FEB 2024 to 21 MAR 2024

WAAS CH 86209 W04A	APP CRS 041°	Rwy Idg 7602 TDZE 44 Apt Elev 46
--	------------------------	---

RNAV (GPS) RWY 4

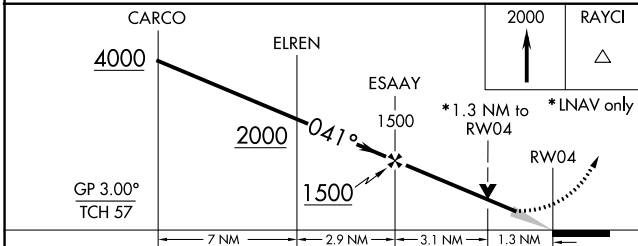
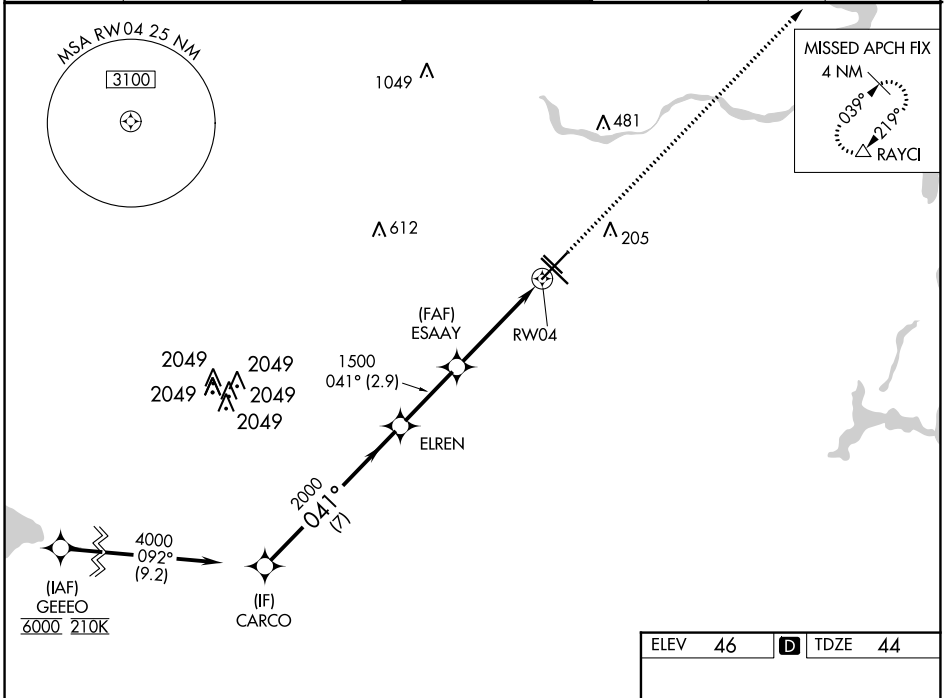
WILLIAM P HOBBY (HOU)

⚠ For uncompensated Baro-VNAV systems, LNAV/VNAV NA below -2°C (29°F) or above 54°C (130°F). For inop ALSF-2, increase LPV Cat E visibility to RVR 4000, LNAV/VNAV all Cats visibility to 1½ miles and LNAV Cat C/D/E visibility to 1¾ mile. DME/DME RNP-0.3 NA.

ALSF-2

MISSED APPROACH:
Climb to 2000 direct RAYCI and hold.

D-ATIS 124.6	HOUSTON APP CON 120.05 379.1 EAST 124.35 316.15 WEST	HOBBY TOWER 118.7 256.9	GND CON 121.9	CLNC DEL 125.45	CPDLC
------------------------	--	-----------------------------------	-------------------------	---------------------------	-------



ELEV 46	D TDZE 44
---------	------------------

TWR 190

REIL Rwy 31L
MIRL Rwy 13L-31R
HIRL Rwys 4-22 and 13R-31L
TDZ/CL Rwys 4, 13R and 31L

CATEGORY	A	B	C	D	E
LPV DA		244/18	200 (200-½)		
LNAV/VNAV DA		440/45	396 (400-¾)		
LNAV MDA	520/24	476 (500-½)	520/50	476 (500-1)	
C CIRCLING	520-1	474 (500-1)	740-2¼	694 (500-2¼)	860-3 814 (900-3)

SC-5, 22 FEB 2024 to 21 MAR 2024

SC-5, 22 FEB 2024 to 21 MAR 2024