

OGDEN, UTAH

# HI-ILS or LOC Y RWY 14

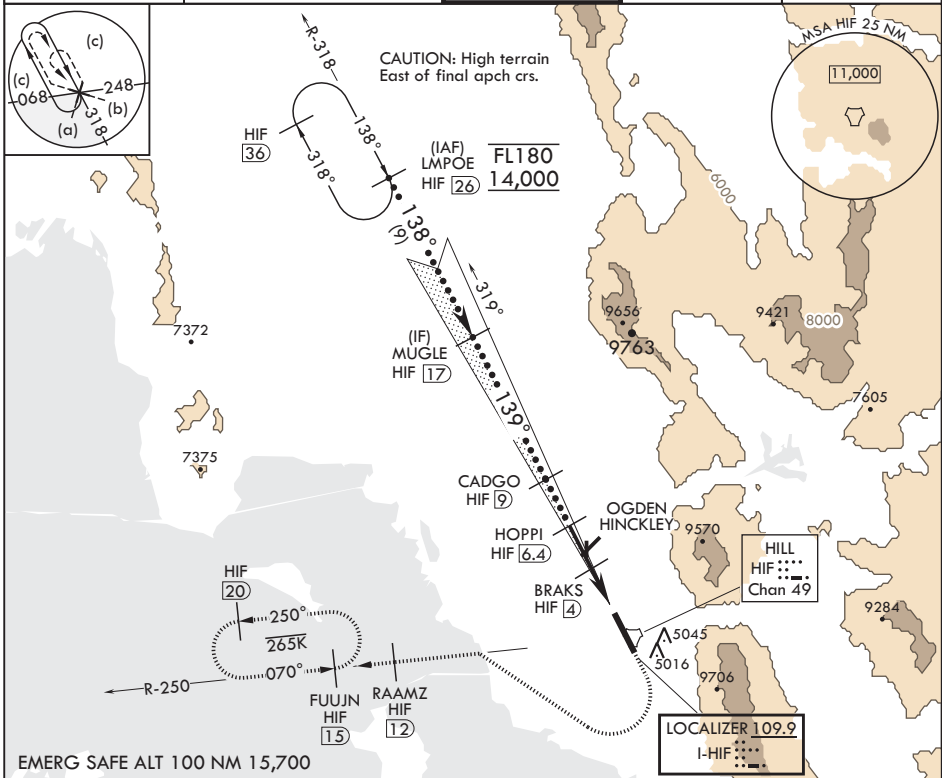
LOC I-HIF <b>109.9</b>	APCH CRS <b>139°</b>	Rwy Idg <b>13,500</b>	TDZE <b>4786</b>
		Arprt Elev <b>4789</b>	

JAL-296 (USAF)

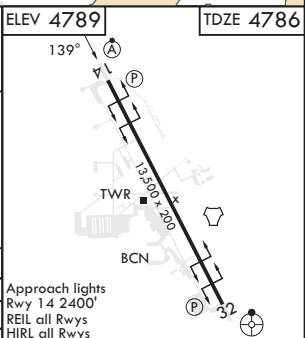
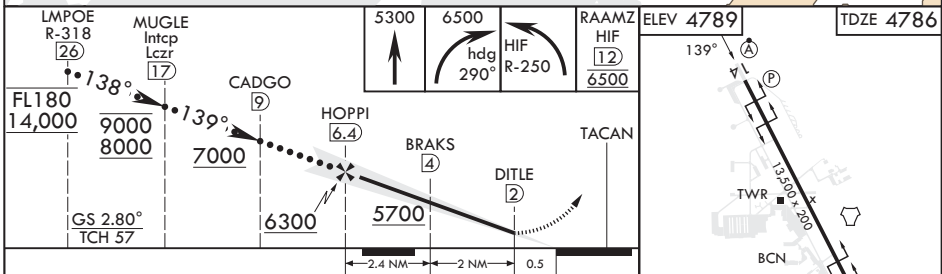
HILL AFB (KHIF)

<p>▼ * When ALS inop, increase RVR to 40, and vis to 3/4 mile. ** When ALS inop, increase RVR to 55, and vis to 1 mile. *** Circling not authorized NE of Rwy 14-32.</p>	<p>ALSF-2</p> 	<p>MISSED APPROACH: Climb to 5300, then turn right heading 290°, remain within HIF TACAN 5.7 DME until established on 290° hdg. Intercept the HIF R-250 outbd. Cross RAAMZ at 6500, then climb and maintain 7200 direct to FUJUN and hold.</p>
--	---	--

<p>ATIS <b>134.925 397.9</b></p>	<p>SALT LAKE CITY APP CON <b>121.1 319.25</b></p>	<p>TOWER <b>127.15 263.15</b></p>	<p>GND CON <b>121.6 275.8</b></p>	<p>CLNC DEL <b>124.1 335.8</b></p>
--------------------------------------	---	---------------------------------------	---------------------------------------	--



EMERG SAFE ALT 100 NM 15,700



CATEGORY	C	D	E
S-ILS 14*	4986/24	200	(200-1/2)
S-LOC 14**	5080/24	294	(300-1/2)
◻ CIRCLING***	5280-1 1/2 491 (500-1 1/2)	5340-2 551 (600-2)	5900-3 1111 (1200-3)

Approach lights Rwy 14 2400'					
REIL all Rwys					
HIRL all Rwys					
FAF to MAP 4.4 NM					
Knots	120	140	160	180	200
Min:Sec	2:12	1:53	1:39	1:28	1:19

OGDEN, UTAH

41°07'N - 111°58'W

HILL AFB (KHIF)

Amdt 9 05OCT23

# HI-ILS or LOC Y RWY 14

SW-4, 22 FEB 2024 to 21 MAR 2024

SW-4, 22 FEB 2024 to 21 MAR 2024

OGDEN, UTAH

# HI-TACAN RWY 32

TACAN HIF Chan 49	APCH CRS 332°	Rwy ldg TDZE Arprt Elev 13,500 4783 4789
----------------------	------------------	---

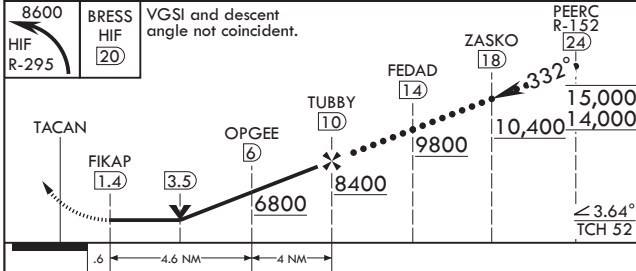
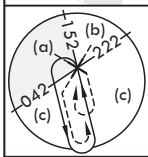
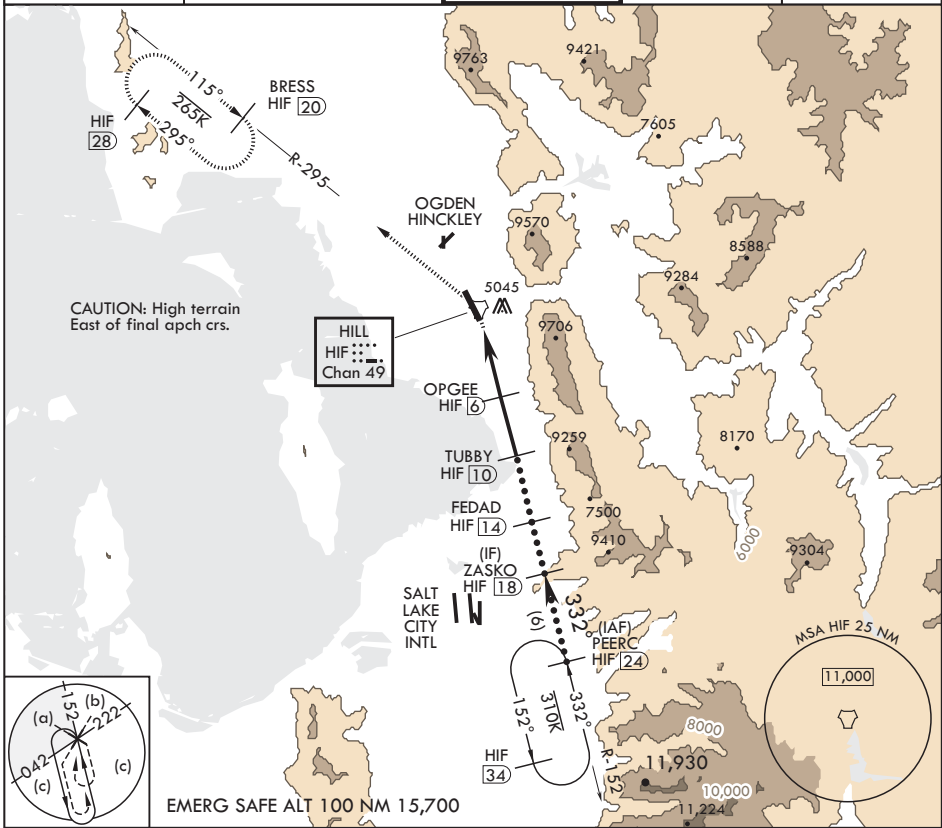
AL-296 (USAF)

HILL AFB (KHIF)

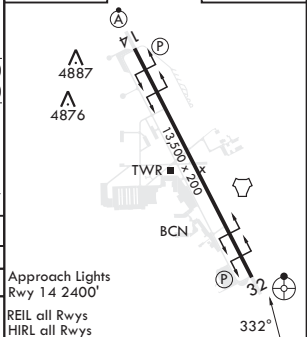
▼ \* When ALS inop, increase CAT CDE vis to 2 1/2 miles.  
 \*\* Circling not authorized in sector NE of Rwy 14-32.

ODALS MISSED APPROACH: Climbing left turn to 8600 out HIF TACAN R-295 to BRESS and hold.

ATIS 134.925 397.9	SALT LAKE CITY APP CON 121.1 319.25	TOWER 127.15 263.15	GND CON 121.6 275.8	CLNC DEL 124.1 335.8
-----------------------	--	------------------------	------------------------	-------------------------



ELEV 4789	TDZE 4783
-----------	-----------



CATEGORY	C	D	E
S-32*	5560-2	777	(800-2)
CIRCLING**	5560-2½ 771	(800-2½)	5860-3 1071 (1100-3)

Approach Lights  
Rwy 14 2400'  
REIL all Rwys  
HIRL all Rwys

OGDEN, UTAH

41°07'N - 111°58'W

HILL AFB (KHIF)

Amdt 6 05OCT23

# HI-TACAN RWY 32

SW-4, 22 FEB 2024 to 21 MAR 2024

SW-4, 22 FEB 2024 to 21 MAR 2024

OGDEN, UTAH

# HI-TACAN Z RWY 14

TACAN HIF Chan 49	APCH CRS 131°	Rwy ldg TDZE Arpt Elev	13,500 4786 4789
-------------------	---------------	------------------------	------------------------

AL-296 (USAF)

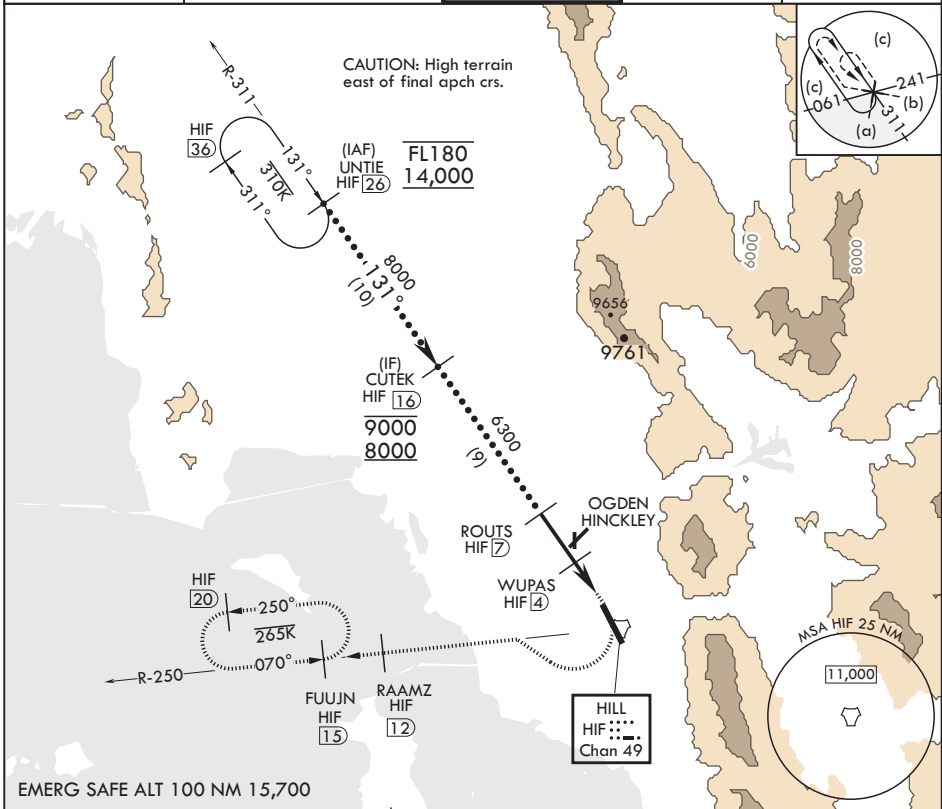
HILL AFB (KHIF)

V \* When ALS inop, increase CAT CDE RVR to 55, vis to 1 mile.  
 \*\* Circling not authorized in sector NE of Rwy 14-32.



**MISSED APPROACH:** Climb to 5300, then turn right heading 290°, remain within HIF TACAN 5.7 DME until established on 290° heading. Intercept the HIF R-250 outbound. Cross RAAMZ at 6500, then climb and maintain 7200 direct to FUJUN and hold.

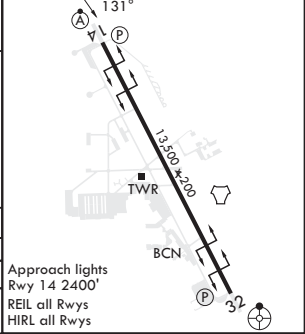
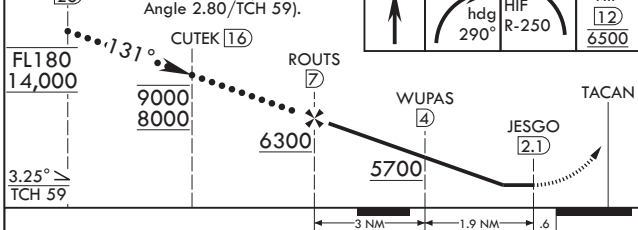
ATIS 134.925 397.9	SALT LAKE CITY APP CON 121.1 319.25	TOWER 127.15 263.15	GND CON 121.6 275.8	CLNC DEL 124.1 335.8
-----------------------	--	------------------------	------------------------	-------------------------



SW-4, 22 FEB 2024 to 21 MAR 2024

SW-4, 22 FEB 2024 to 21 MAR 2024

EMERG SAFE ALT 100 NM 15,700	UNTIE 26	VGSI and descent angle not coincident (VGSI Angle 2.80/TCH 59).	5300	6500	RAAMZ HIF 12 6500	ELEV 4789	TDZE 4786
------------------------------	----------	---	------	------	-------------------	-----------	-----------



CATEGORY	C	D	E
S-14*	5160/40	374	(400-3/4)
<span style="border: 1px solid black; padding: 2px;">C</span> CIRCLING**	5340-2 551	(600-2)	5900-3 1111 (1200-3)

Approach lights Rwy 14 2400'  
 REIL all Rwys  
 HIRL all Rwys

OGDEN, UTAH

41°07'N - 111°58'W

HILL AFB (KHIF)

Amdt 9 05OCT23

# HI-TACAN Z RWY 14

# ILS or LOC X RWY 14

LOC I-HIF	APCH CRS	Rwy Idg	13,500
109.9	139°	TDZE	4786
		Appt Elev	4789

AL-296 [USAF]

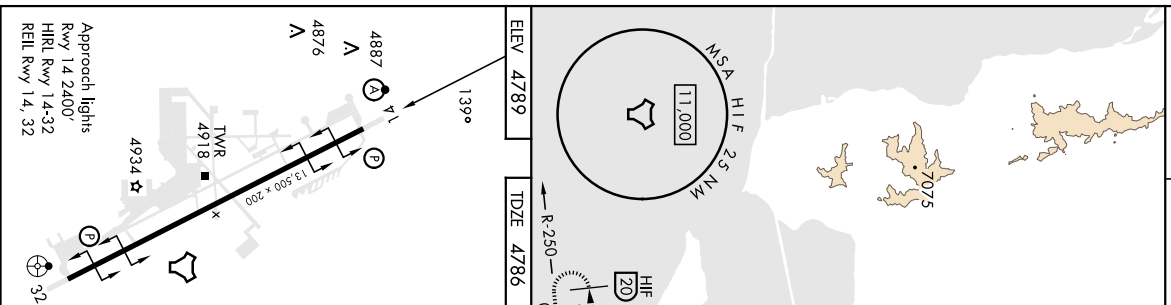
HILL AFB (KHIF)

RADAR or DME required for LOC.

- ▼ \*\* When ALS Inop, increase RVR to 40 and vis to 3/4 mile.
- \*\* When ALS Inop, increase RVR to 55 and vis to 1 mile.
- \*\*\* Circling not authorized in sector NE of Rwy 14-32.

MISSED APPROACH: Climb to 5300, then turn right heading 290°, remain within HIF TACAN 5.7 DME until established on 290° heading. Intercept the HIF R-250 outbound Cross RAAMZ at 8500, then climb and maintain 7200 direct to FUJIN and hold.

ATIS	SALT LAKE CITY APP CON	TOWER	GND CON	CINC DEL
134,925	397.9	121.1 319.25	127.15 263.15	121.6 275.8
				124.1 335.8



EMERG SAFE ALT 100 NM 15,700		WIND		MUSCLE		5300		6500		RAAMZ	
		HIF [23]		Inp Lczt		HIF [17]		hdg		HIF [12]	
		8600		CADGO		HIF [9]		290°		5500	
				7000		HIF [6, 2]		R-250		5000	
				6300		HIF [2]					
				5700		HIF [2]					
				5300		HIF [2]					
				491500-1 1/2		HIF [2]					
				491500-1 1/2		HIF [2]					

CATEGORY: A B C D E  
 S-15 14 \*\* 4986/24 200 (200-1/2)  
 S-10C 14 \*\*\* 5080/24 294 (300-1/2)  
 S-10C 14 \*\*\* 5280-1 491 (500-1) 5340-2 5900-3  
 S-10C 14 \*\*\* 491(500-1 1/2) 551 (600-2) 1111 (1200-3)

SW-4, 22 FEB 2024 to 21 MAR 2024

SW-4, 22 FEB 2024 to 21 MAR 2024

OGDEN, UTAH  
Amdt 9 05OCT23

# ILS or LOC X RWY 14

41° 07' N-111° 58' W

HILL AFB (KHIF)

OGDEN, UTAH

# TACAN X RWY 14

TACAN HIF Chan 49	APCH CRS 131°	Rwy ldg TDZE Arprt Elev 13,500 4786 4789
----------------------	------------------	---

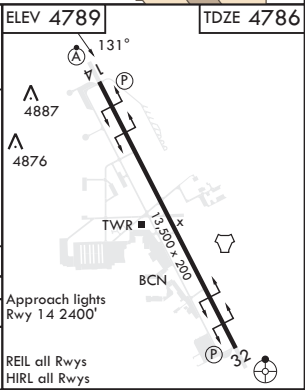
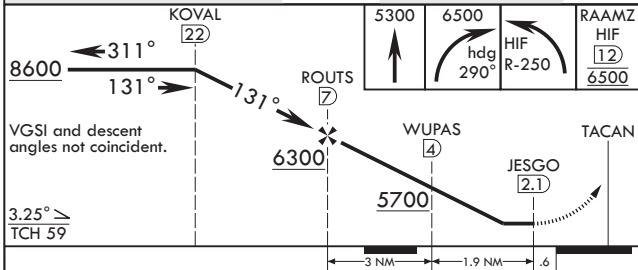
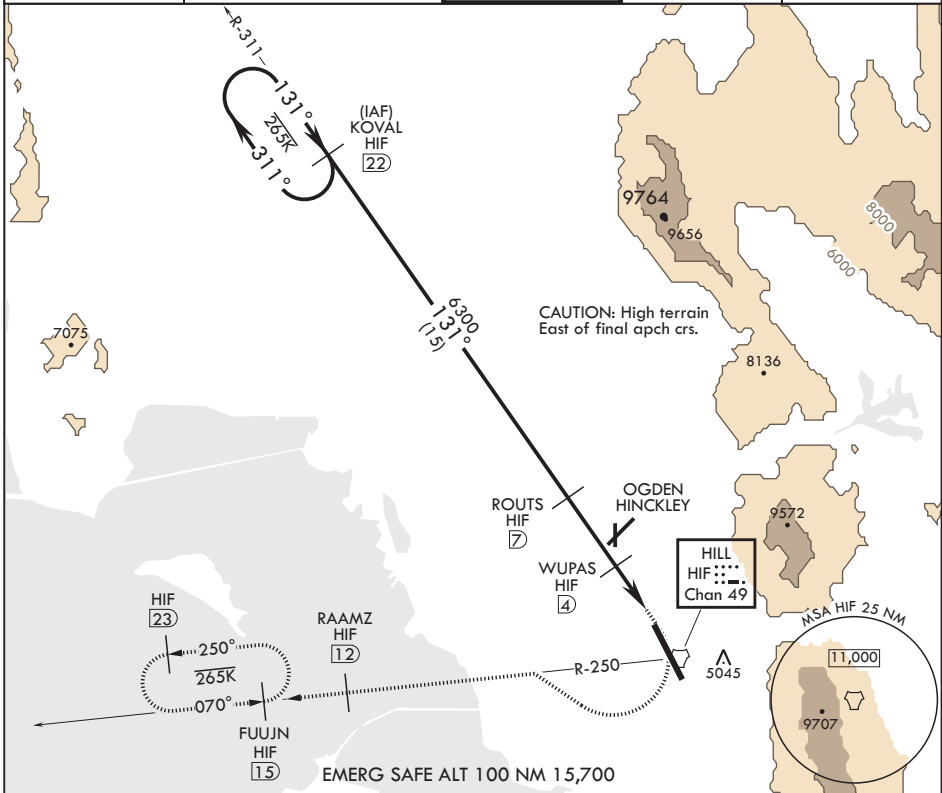
AL-296 (USAF)

HILL AFB (KHIF)

▼ \* When ALS inop, increase RVR to 55, vis to 1 mile.  
 \*\* Circling not authorized in sector NE of Rwy 14-32.

ALSF-2  
 MISSED APPROACH: Climb to 5300, then turn right heading 290°, remain within HIF TACAN 5.7 DME until established on 290° heading. Intercept HIF R-250 outbound. Cross RAAMZ at 6500, then climb and maintain 7200 direct to FUJUN and hold.

ATIS 134.925 397.9	SALT LAKE CITY APP CON 121.1 319.25	TOWER 127.15 263.15	GND CON 121.6 275.8	CLNC DEL 124.1 335.8
-----------------------	--	------------------------	------------------------	-------------------------



CATEGORY	A	B	C	D	E
S-14*	5160/24 374 (400-½)		5160/40 374 (400-¾)		
☐ CIRCLING**	5280-1 491 (500-1)		5280-1½ 491 (500-1½)	5340-2 551 (600-2)	5900-3 1111 (1200-3)

OGDEN, UTAH

41°07'N - 111°58'W

HILL AFB (KHIF)

Amdt 7 05OCT23

# TACAN X RWY 14

SW-4, 22 FEB 2024 to 21 MAR 2024

SW-4, 22 FEB 2024 to 21 MAR 2024