

APP CRS 275°	Rwy Idg 5003
	TDZE 806
	Apt Elev 806

RNAV (GPS) RWY 27

HUNTINGTON MUNI (HHG)

RNP APCH.

⚠ Rwy 27 helicopter visibility reduction below 3/4 SM NA.

MISSED APPROACH: Climb to 1700 then climbing right turn to 2600 direct IDXOH and hold.

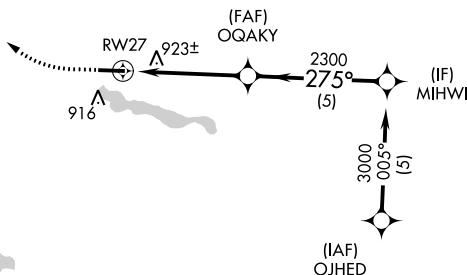
AWOS-3PT
126.575

FORT WAYNE APP CON
127.2 284.6

UNICOM
122.8 (CTAF) 0

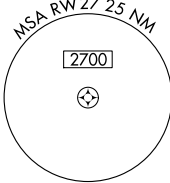
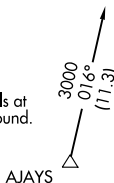


▲ 1182

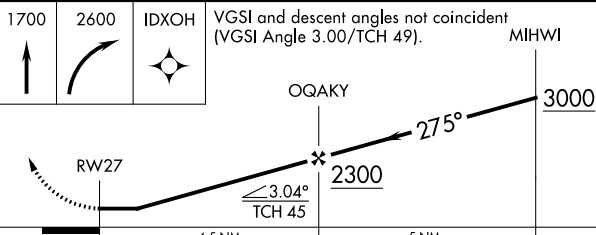
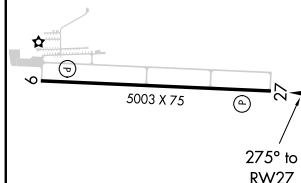


▲ 1397

Procedure NA for arrivals at AJAYS on V221 southbound.



ELEV	806	TDZE	806
------	-----	------	-----



CATEGORY	A	B	C	D
LNAV MDA	1200-1	394 (400-1)	1200-1 1/8 394 (400-1 1/8)	1200-1 1/4 394 (400-1 1/4)
C CIRCLING	1300-1	494 (500-1)	1460-1 3/4 654 (700-1 3/4)	1540-2 1/4 734 (800-2 1/4)

MIRL Rwy 9-27 **0**
REIL Rwys 9 and 27 **0**

EC-2, 28 JAN 2021 to 25 FEB 2021

EC-2, 28 JAN 2021 to 25 FEB 2021

APP CRS	Rwy Idg	5003
095°	TDZE	806
	Apt Elev	806

RNAV (GPS) RWY 9

HUNTINGTON MUNI (HHG)

RNP APCH.

⚠ Rwy 9 helicopter visibility reduction below 3/4 SM NA.

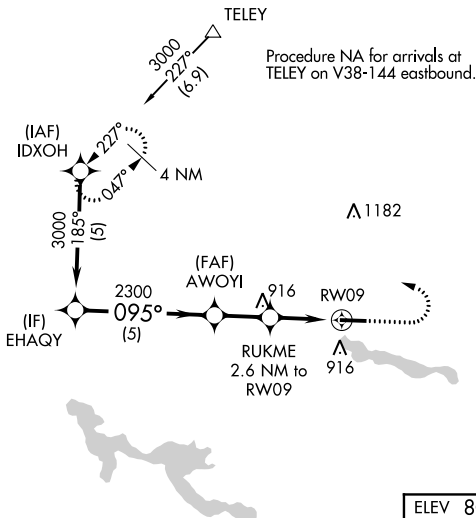
MISSED APPROACH: Climb to 1700 then climbing left turn to 2600 direct IDXOH and hold.

AWOS-3PT
126.575

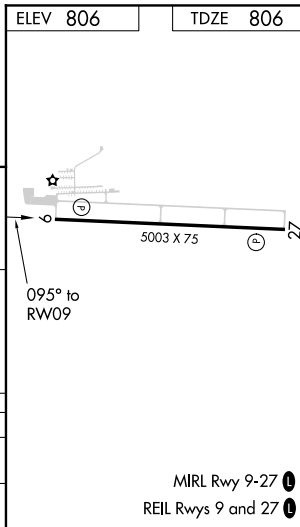
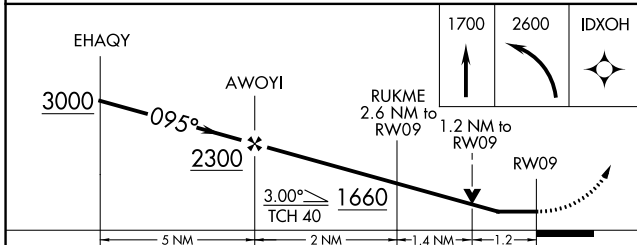
FORT WAYNE APP CON
127.2 284.6

UNICOM
122.8 (CTAF) 0

1648 **⚠**



ELEV 806	TDZE 806
----------	----------



CATEGORY	A	B	C	D
LNVA MDA	1220-1 414 (500-1)		1220-1 1/4 414 (500-1 1/4)	
C CIRCLING	1300-1 494 (500-1)		1460-1 3/4 654 (700-1 3/4)	1540-2 1/4 734 (800-2 1/4)

EC-2, 28 JAN 2021 to 25 FEB 2021

EC-2, 28 JAN 2021 to 25 FEB 2021

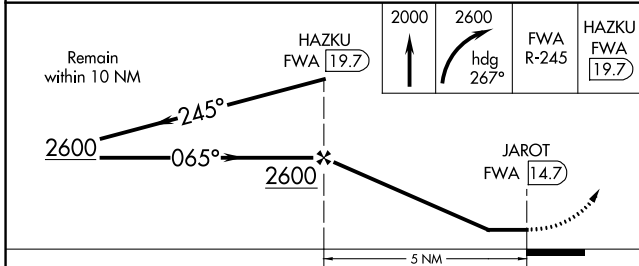
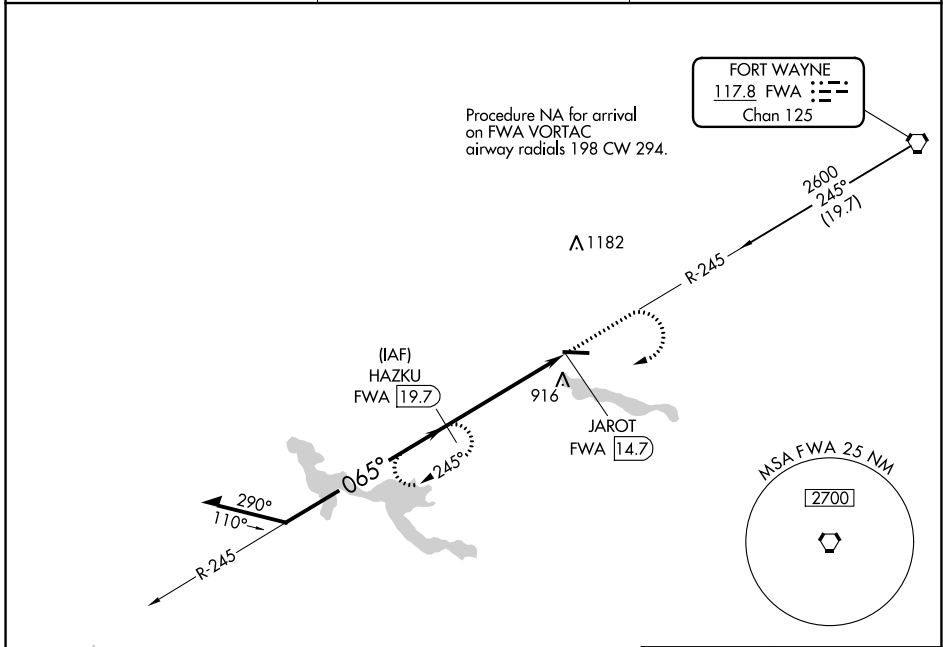
VORTAC FWA 117.8 Chan 125	APP CRS 065°	Rwy Idg TDZE Apt Elev	N/A N/A 806
---	------------------------	-----------------------------	--

VOR-A
HUNTINGTON MUNI (HHG)

DME required.

MISSED APPROACH: Climb to 2000 then climbing right turn to 2600 on heading 267° and on FWA VORTAC R-245 to HAZKU/19.7 DME and hold.

AWOS-3PT 126.575	FORT WAYNE APP CON 127.2 284.6	UNICOM 122.8 (CTAF)
----------------------------	--	-------------------------------



CATEGORY	A	B	C	D
CIRCLING	1300-1	494 (500-1)	1460-1¾ 654 (700-1¾)	1540-2¼ 734 (800-2¼)

ELEV 806

065° 5 NM from FAF

MRL Rwy 9-27

REIL Rws 9 and 27

EC-2, 28 JAN 2021 to 25 FEB 2021

EC-2, 28 JAN 2021 to 25 FEB 2021