

WAAS CH 53739 W21A	APP CRS 210°	Rwy Idg TDZE Apt Elev	5501 668 671
--	------------------------	-----------------------------	---

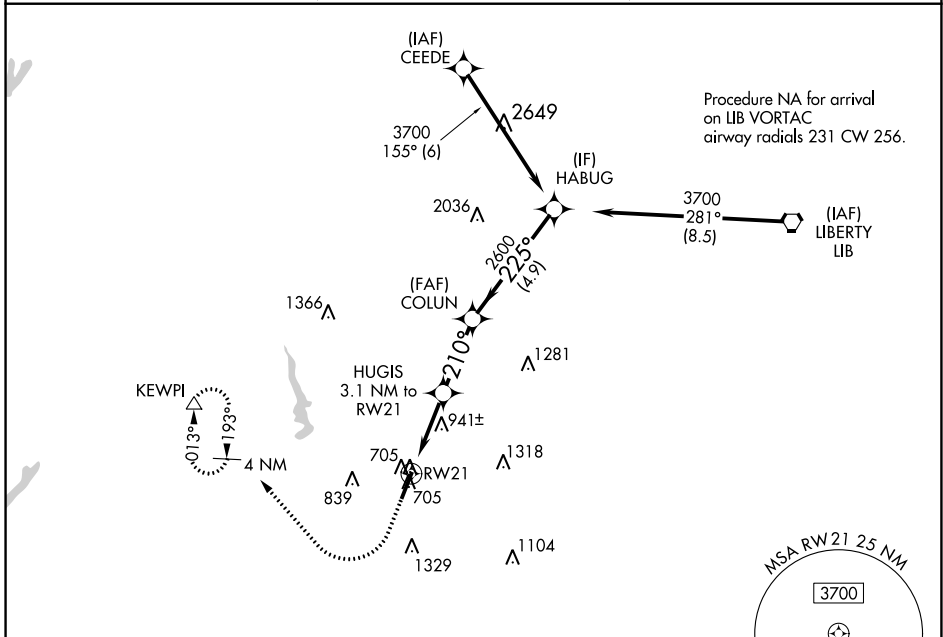
RNAV (GPS) RWY 21

ASHEBORO RGNL (HBI)

⚠ For uncompensated Baro-VNAV systems, LNAV/VNAV NA below -16°C (4°F) or above 54°C (130°F). Rwy 21 helicopter visibility reduction below 3/4 SM NA. DME/DME RNP-0.3 NA.

MISSED APPROACH: Climb to 3000 then right turn direct KEWPI and hold.

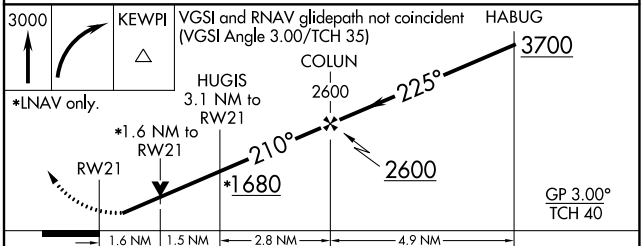
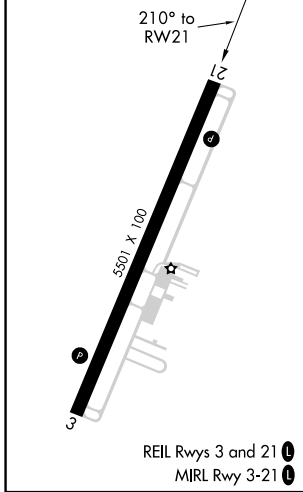
AWOS-3 119.275	GREENSBORO APP CON 126.6 327.075	UNICOM 122.8 (CTAF) 0
--------------------------	--	---------------------------------



SE-2, 02 DEC 2021 to 30 DEC 2021

SE-2, 02 DEC 2021 to 30 DEC 2021

ELEV 671	TDZE 668
----------	----------



CATEGORY	A	B	C	D
LPV DA		918-7/8	250 (300-7/8)	
LNAV/VNAV DA		1069-13/8	401 (400-13/8)	
LNAV MDA	1200-1	532 (600-1)	1200-1 1/2	532 (600-1 1/2)
<input checked="" type="checkbox"/> CIRCLING	1240-1 569 (600-1)	1360-1 689 (700-1)	1680-3	1009 (1100-3)

WAAS CH 86740 W03A	APP CRS 030°	Rwy Idg TDZE 671 Apt Elev 671	5501
---------------------------------	------------------------	---	-------------

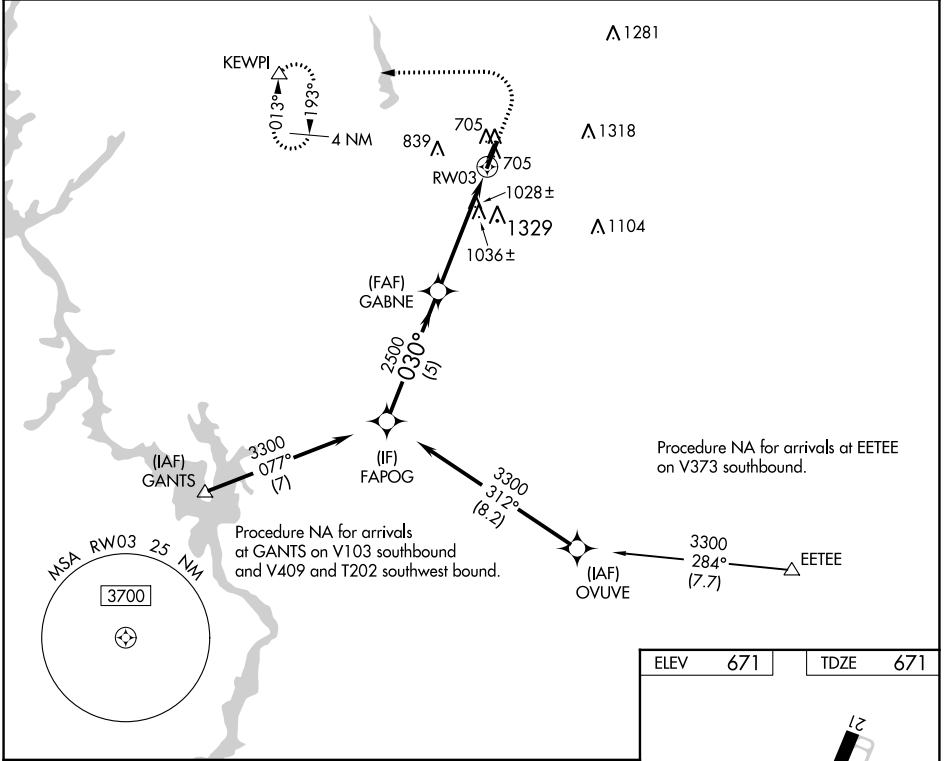
RNAV (GPS) RWY 3

ASHEBORO RGNL (HBI)

⚠ Rwy 3 helicopter visibility reduction below $\frac{3}{4}$ SM NA.
⚠ DME/DME RNP-0.3 NA.

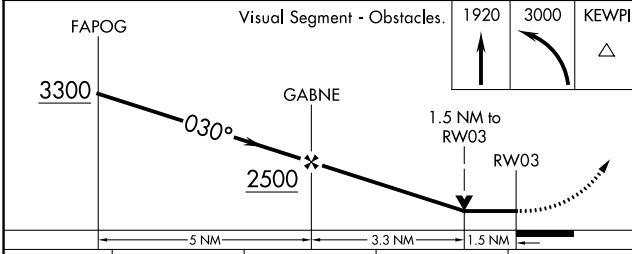
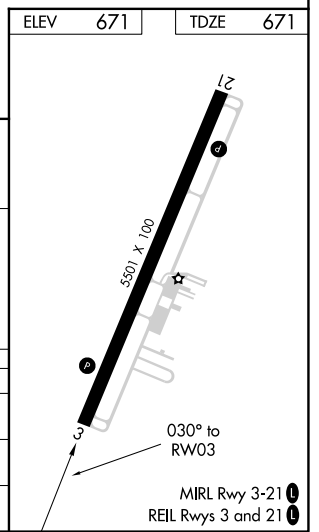
MISSED APPROACH: (Do not exceed 250K until KEWPI) Climb to 1920 then climbing left turn to 3000 direct KEWPI and hold.

AWOS-3 119.275	GREENSBORO APP CON 126.6 327.075	UNICOM 122.8 (CTAF) 0
--------------------------	--	---------------------------------



SE-2, 02 DEC 2021 to 30 DEC 2021

SE-2, 02 DEC 2021 to 30 DEC 2021



CATEGORY		A	B	C	D
LP	MDA	1280-1	609 (700-1)	1280-1 $\frac{3}{4}$	609 (700-1 $\frac{3}{4}$)
LN	MDA	1300-1	629 (700-1)	1300-1 $\frac{3}{4}$	629 (700-1 $\frac{3}{4}$)
C	CIRCLING	1300-1 629 (700-1)	1360-1 689 (700-1)	1680-3	1009 (1100-3)