

NDB GYZ <b>280</b>	APP CRS <b>321°</b>	Rwy ldg TDZE Apt Elev	<b>5060</b> <b>4380</b> <b>4402</b>
-----------------------	------------------------	-----------------------------	---

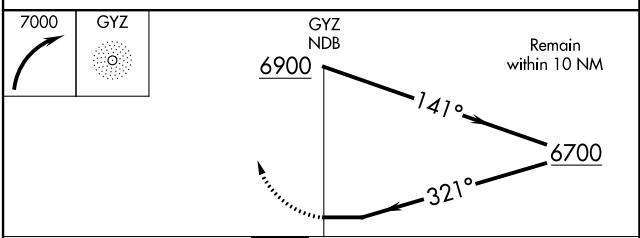
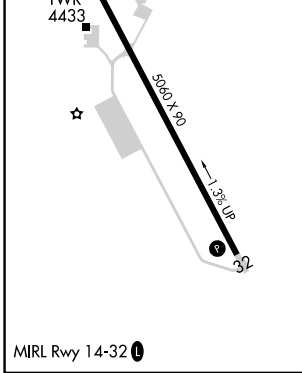
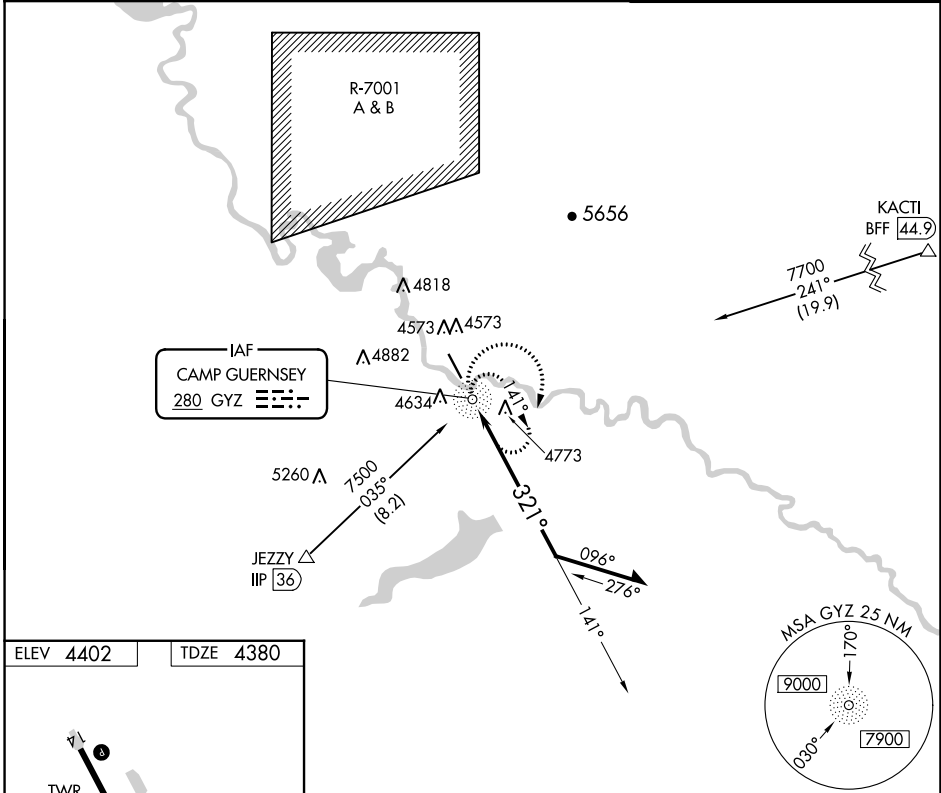
# NDB RWY 32

CAMP GUERNSEY (GUR)

**⚠** NA Rwy 32 helicopter visibility reduction below 3/4 SM NA.

MISSED APPROACH: Climbing right turn to 7000 in GYZ NDB holding pattern.

ATIS <b>119.825</b>	DENVER CENTER <b>135.6 363.025</b>	GUERNSEY TOWER* <b>126.2 (CTAF) 233.3</b>
------------------------	---------------------------------------	--



CATEGORY	A	B	C	D
S-32	5660-1¼ 1280 (1300-1¼)	5660-1½ 1280 (1300-1½)	5660-3	1280 (1300-3)
<b>CIRCLING</b>	5660-1¼ 1258 (1300-1¼)	5660-1½ 1258 (1300-1½)	5660-3	5740-3 1338 (1400-3)

NW-1, 22 FEB 2024 to 21 MAR 2024

NW-1, 22 FEB 2024 to 21 MAR 2024

WAAS CH <b>69426</b>	APP CRS <b>321°</b>	Rwy Idg TDZE <b>4380</b>	<b>5060</b>
<b>W32A</b>		Apt Elev <b>4402</b>	

# RNAV (GPS) RWY 32

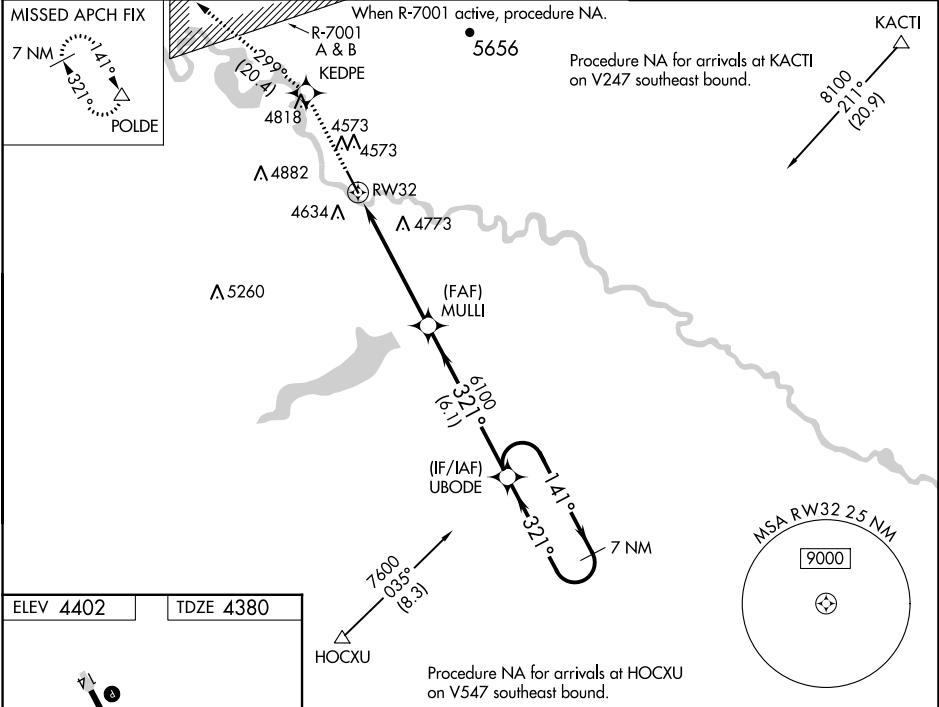
CAMP GUERNSEY (GUR)

RNP APCH-GPS.

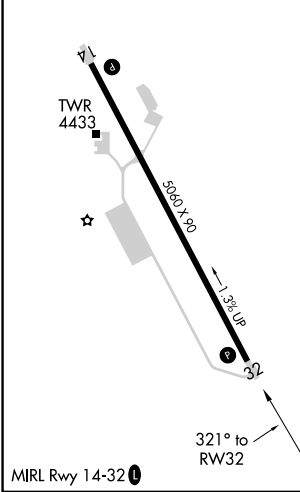
**⚠ NA** When local altimeter setting not received, use Torrington altimeter setting and increase all MDAs 100 feet; increase LP and LNAV Cat C/D visibility 1/2 SM, and LP Cat B visibility and Circling Cat A visibility 1/2 SM. Helicopter visibility reduction below 3/4 SM NA. When Rwy 32 VGSI inop, Straight-In and Circling minimums NA at night. When Rwy 14 VGSI inop, Circling to Rwy 14 NA at night.

**MISSED APPROACH:**  
Climb to 9000 direct KEDPE and on track 299° to POLDE and hold.

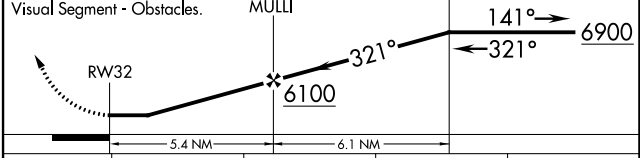
ATIS <b>119.825</b>	DENVER CENTER <b>135.6 363.025</b>	GUERNSEY TOWER* <b>126.2 (CTAF) 233.3</b>
------------------------	---------------------------------------	--



ELEV 4402	TDZE 4380
-----------	-----------



9000	KEDPE	tr 299°	POLDE	UBODE	7 NM Holding Pattern
------	-------	---------	-------	-------	----------------------



CATEGORY	A	B	C	D
LP MDA	5040-1	660 (700-1)	5040-2	660 (700-2)
LNAV MDA	5080-1 700 (700-1)	5080-1 1/4 700 (700-1 1/4)	5080-2	700 (700-2)
CIRCLING	5200-1 798 (800-1)	5240-1 1/4 838 (900-1 1/4)	5360-3 958 (1000-3)	5740-3 1338 (1400-3)

NW-1, 22 FEB 2024 to 21 MAR 2024

NW-1, 22 FEB 2024 to 21 MAR 2024