

LOC/DME I-CUE 110.55 Chan 42 (Y)	APP CRS 184°	Rwy Idg TDZE Apt Elev	5502 777 777
---	------------------------	-----------------------------	---

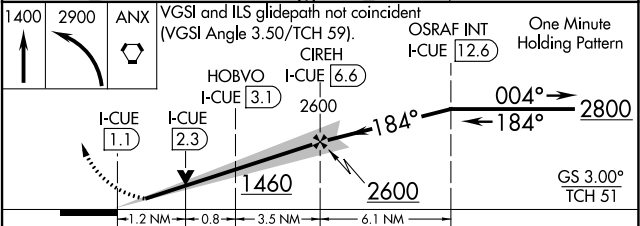
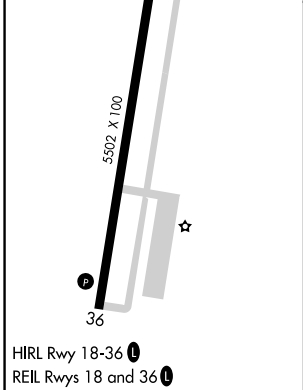
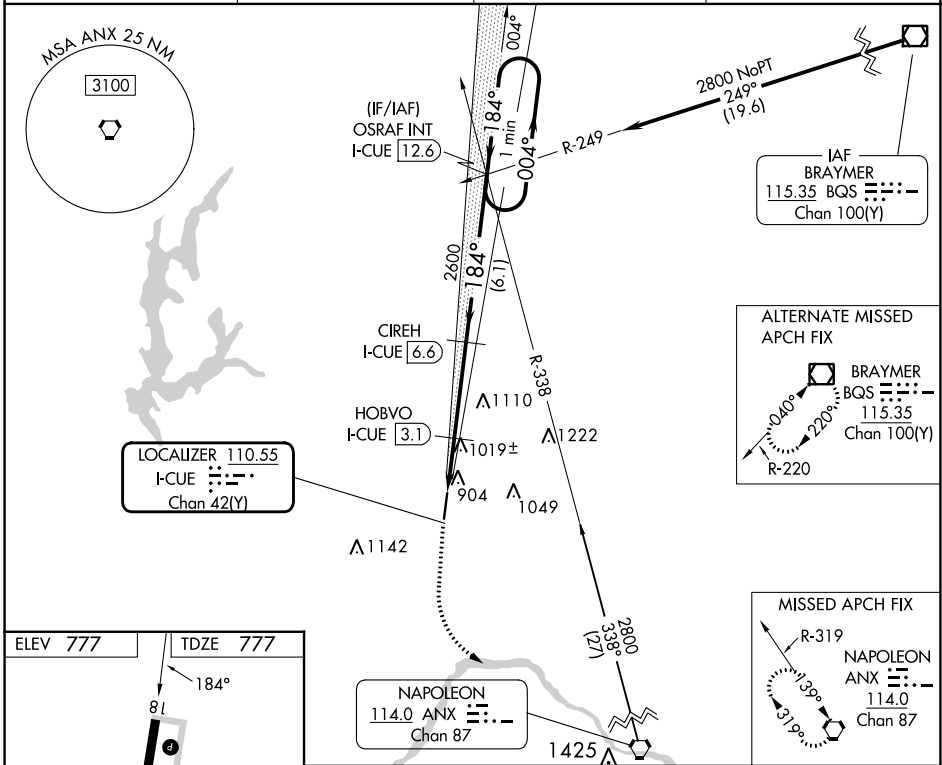
ILS or LOC/DME RWY 18

MIDWEST NTL AIR CENTER (GPH)

NA Obtain local altimeter setting on CTAF; when not received use Kansas City Intl altimeter setting and increase DA 79 feet and all visibilities 1/4 mile; increase all MDAs 80 feet, and Circling visibility Cat C 1/4 mile. Autopilot coupled approach NA below 960.

MISSED APPROACH: Climb to 1400 then climbing left turn to 2900 direct ANX VORTAC and hold.

AWOS-3T 120.275	KANSAS CITY APP CON 118.4 307.35	CLNC DEL 118.2	UNICOM 122.7 (CTAF)
---------------------------	--	--------------------------	-------------------------------



CATEGORY	A	B	C	D
S-ILS 18	977-3/4 200 (200-3/4)			NA
S-LOC 18	1280-1	503 (600-1)	1280-1 1/2 503 (600-1 1/2)	NA
CIRCLING	1300-1 523 (600-1)	1320-1 543 (600-1)	1360-1 1/2 583 (600-1 1/2)	NA

NC-3, 22 FEB 2024 to 21 MAR 2024

NC-3, 22 FEB 2024 to 21 MAR 2024

WAAS CH 70323 W18A	APP CRS 184°	Rwy Idg TDZE 777 Apt Elev 777
--	------------------------	---

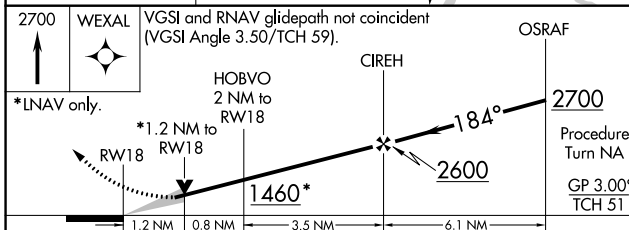
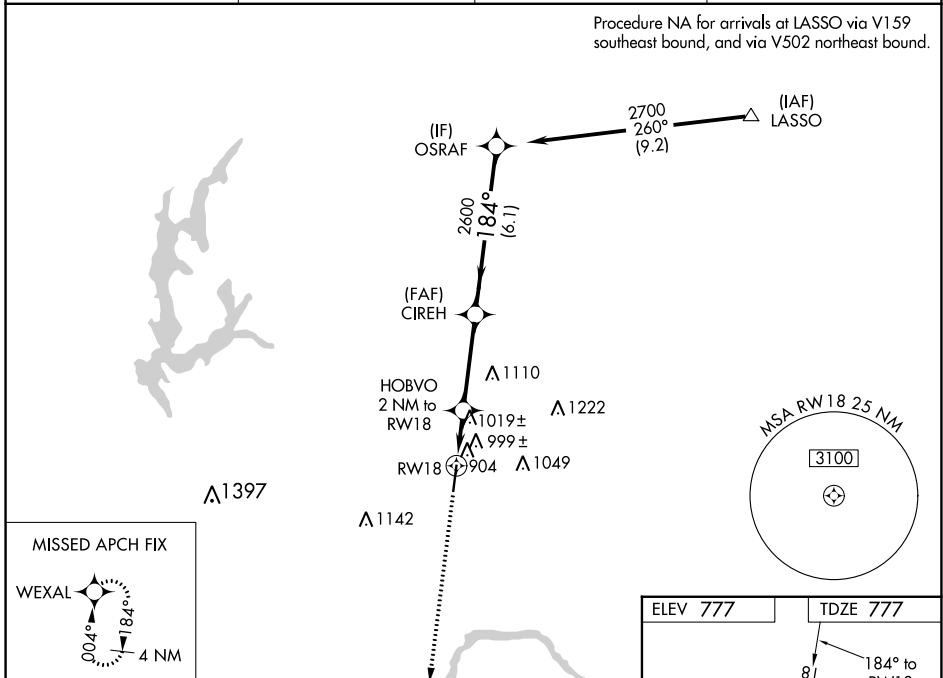
RNAV (GPS) RWY 18

MIDWEST NTL AIR CENTER (GPH)

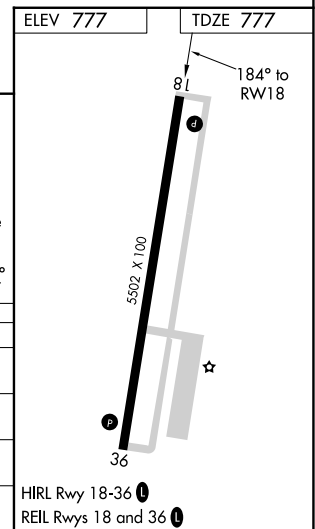
NA For uncompensated Baro-VNAV systems, LNAV/VNAV NA below -16°C (4°F) or above 54°C (130°F). DME/DME RNP- 0.3 NA.
Baro-VNAV and VDP NA when using Kansas City Intl altimeter setting.
Obtain local altimeter setting on CTAF; when not received, use Kansas City Intl altimeter setting and increase all DAs 79 feet and all LPV and LNAV/VNAV visibilities ¼ mile; increase all MDAs 80 feet and circling visibility Cat C ¼ mile.

MISSED APPROACH: Climb to 2700 direct WEXAL and hold.

AWOS-3T 120.275	KANSAS CITY APP CON 118.4 307.35	CLNC DEL 118.2	UNICOM 122.7 (CTAF)
---------------------------	--	--------------------------	-------------------------------



CATEGORY	A	B	C	D
LPV DA	1189-1½ 412 (500-1½)			NA
LNAV/VNAV DA	1324-2 547 (600-2)			NA
LNAV MDA	1280-1 503 (600-1)	1280-1½ 503 (600-1½)		NA
CIRCLING	1300-1 523 (600-1)	1320-1 543 (600-1)	1360-1½ 583 (600-1½)	NA



NC-3, 22 FEB 2024 to 21 MAR 2024

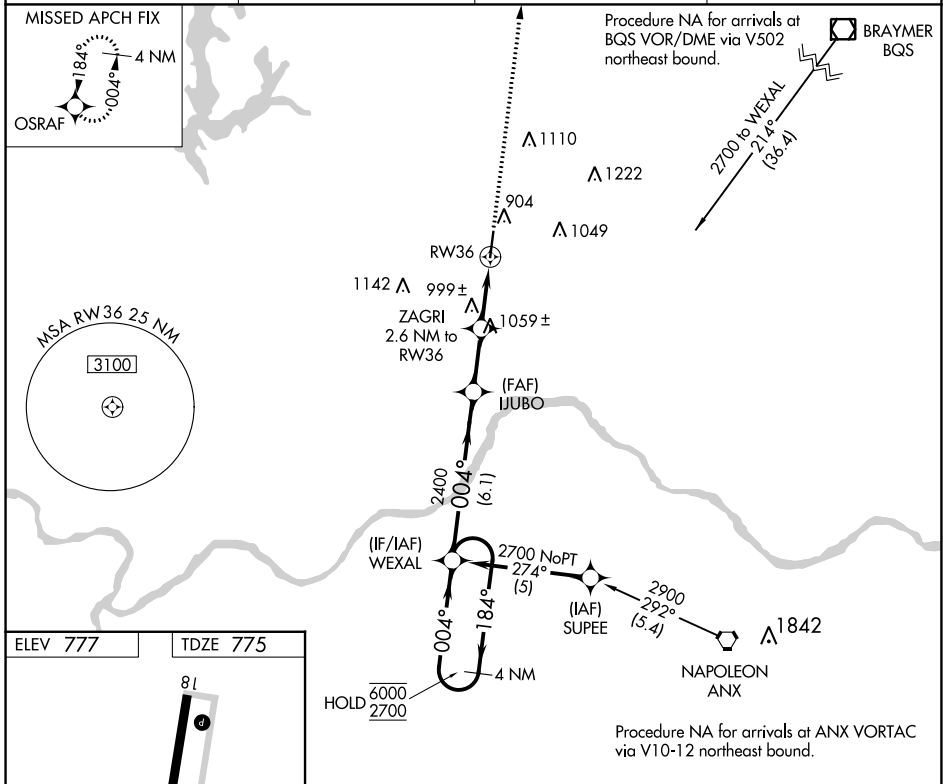
NC-3, 22 FEB 2024 to 21 MAR 2024

APP CRS	Rwy Idg	5502
004°	TDZE	775
	Apt Elev	777

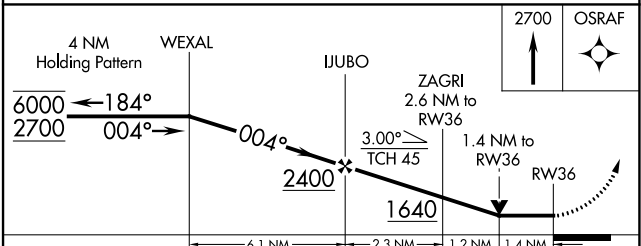
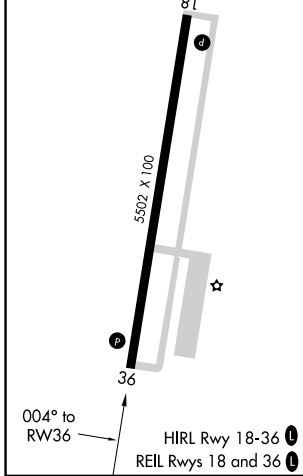
RNAV (GPS) RWY 36

MIDWEST NTL AIR CENTER (GPH)

RNP APCH-GPS.		MISSED APPROACH: Climb to 2700 direct OSRAF and hold.	
Rwy 36 helicopter visibility reduction below 3/4 SM NA.		CLNC DEL	UNICOM
AWOS-3T	KANSAS CITY APP CON	118.2	122.7 (CTAF) 1
120.275	118.4 307.35		



ELEV 777	TDZE 775
----------	----------



CATEGORY	A	B	C	D
LNVA MDA	1260-1	485 (500-1)	1260-1 3/8 485 (500-1 3/8)	NA
CIRCLING	1300-1 523 (600-1)	1320-1 543 (600-1)	1360-1 1/2 583 (600-1 1/2)	NA

NC-3, 22 FEB 2024 to 21 MAR 2024

NC-3, 22 FEB 2024 to 21 MAR 2024