

APP CRS	Rwy Idg	<b>3040</b>
<b>029°</b>	TDZE	<b>420</b>
	Apt Elev	<b>422</b>

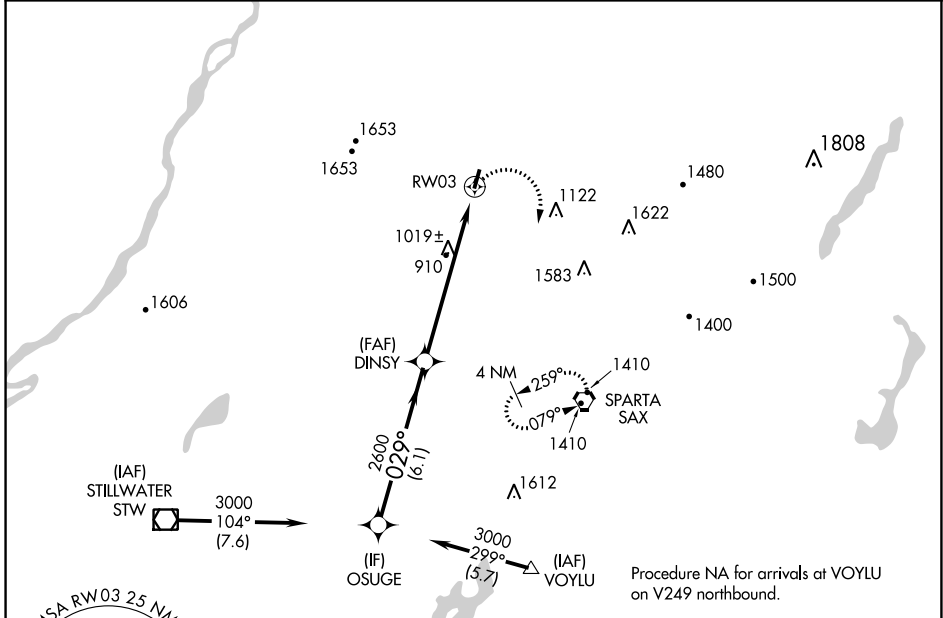
# RNAV (GPS) RWY 3

SUSSEX (F'WN)

**⚠** DME/DME RNP-0.3 NA. When local altimeter setting not received, use Teterboro altimeter setting and increase all MDA 140 feet; increase LNAV Cats A/B and Circling Cat B visibility ¼ mile and increase LNAV and Circling Cat C visibility ½ mile. Procedure NA at night. Helicopter visibility reduction below 1 SM NA.

**⚠** MISSED APPROACH: Climbing right turn to 3000 direct SAX VORTAC and hold.

ASOS <b>118.525</b>	NEW YORK APP CON <b>127.6 379.9</b>	UNICOM <b>122.7 (CTAF) 0</b>
------------------------	--	---------------------------------

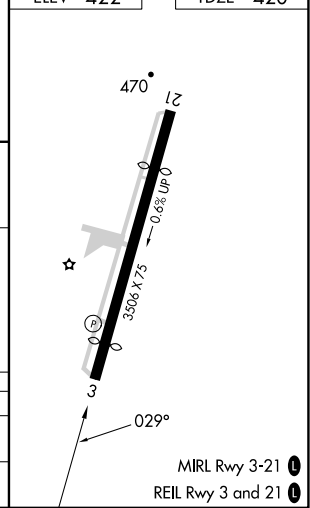
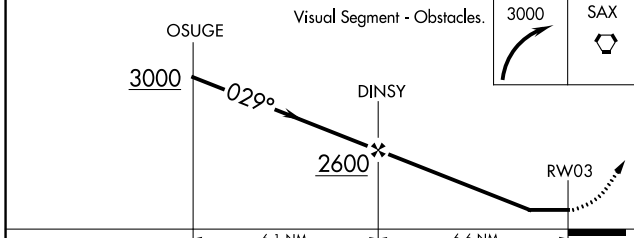


NE-2, 22 FEB 2024 to 21 MAR 2024

NE-2, 22 FEB 2024 to 21 MAR 2024



ELEV 422	TDZE 420
----------	----------



CATEGORY	A	B	C	D
LNAV MDA	1300-1 880 (900-1)	1300-1¼ 880 (900-1¼)	1300-2½ 880 (900-2½)	NA
<b>C</b> CIRCLING	1300-1¼	878 (900-1¼)	1300-2½ 878 (900-2½)	NA

VORTAC SAX <b>115.7</b> Chan <b>104</b>	APP CRS <b>345°</b>	Rwy Idg TDZE Apt Elev	<b>N/A</b> <b>N/A</b> <b>422</b>
---	------------------------	-----------------------------	--

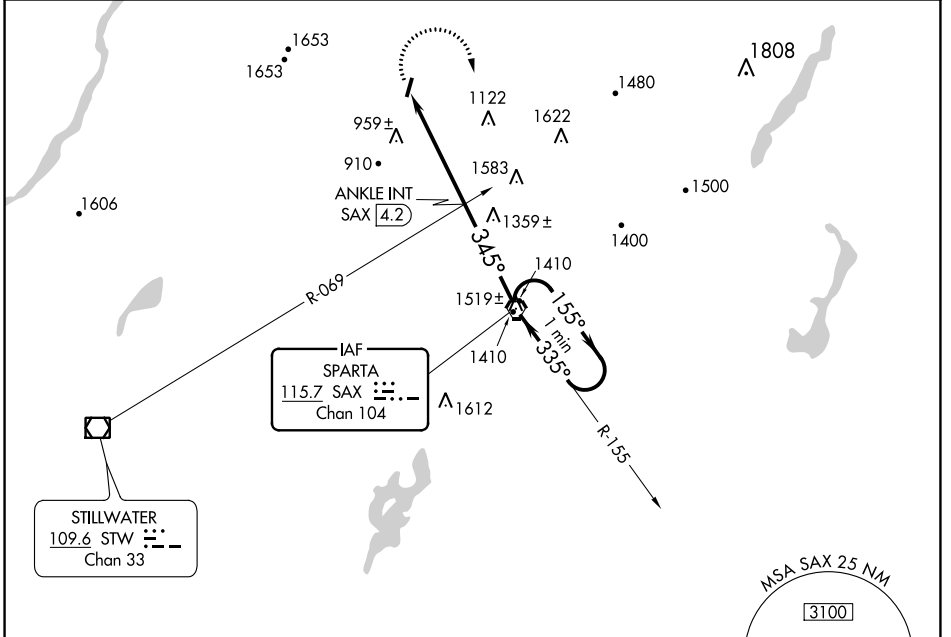
# VOR-A

SUSSEX (F'WN)

**⚠** When local altimeter setting not received, use Teterboro altimeter setting and increase all MDA 140 feet and ANKLE FIX Minimums Cats A & B visibility ½ mile and Cat C ½ mile. Procedure NA at night. Helicopter visibility reduction below 1 SM NA.

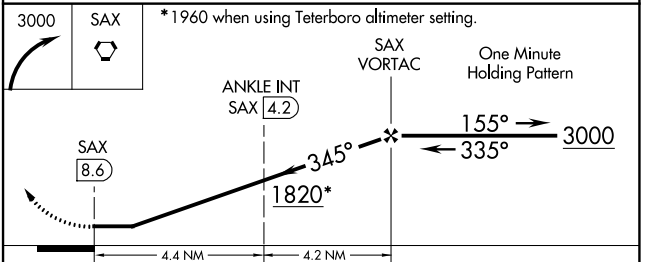
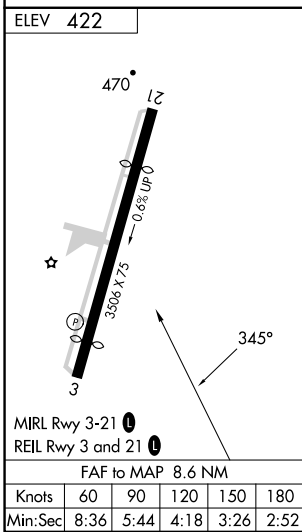
**MISSED APPROACH:** Climbing right turn to 3000 direct SAX VORTAC and hold.

ASOS <b>118.525</b>	NEW YORK APP CON <b>127.6 379.9</b>	UNICOM <b>122.7</b> (CTAF)
------------------------	--	-------------------------------



NE-2, 22 FEB 2024 to 21 MAR 2024

NE-2, 22 FEB 2024 to 21 MAR 2024



CATEGORY	A	B	C	D
<b>C</b> CIRCLING	1820-1¼ 1398 (1400-1¼)	1820-1½ 1398 (1400-1½)	1820-3 1398 (1400-3)	NA
<b>ANKLE FIX MINIMUMS (DUAL VOR RECEIVERS OR DME REQUIRED)</b>				
<b>C</b> CIRCLING	1300-1 878 (900-1)	1300-1¼ 878 (900-1¼)	1300-2½ 878 (900-2½)	NA