

RNAV (GPS) RWY 4

AL-155 (USA)

MARSHALL AAF (KFRI)

ARCH CRS	Rwy Idg	4503
044°	TDZE	1066
	Apri Elev	1066

RNAV APCH - GPS

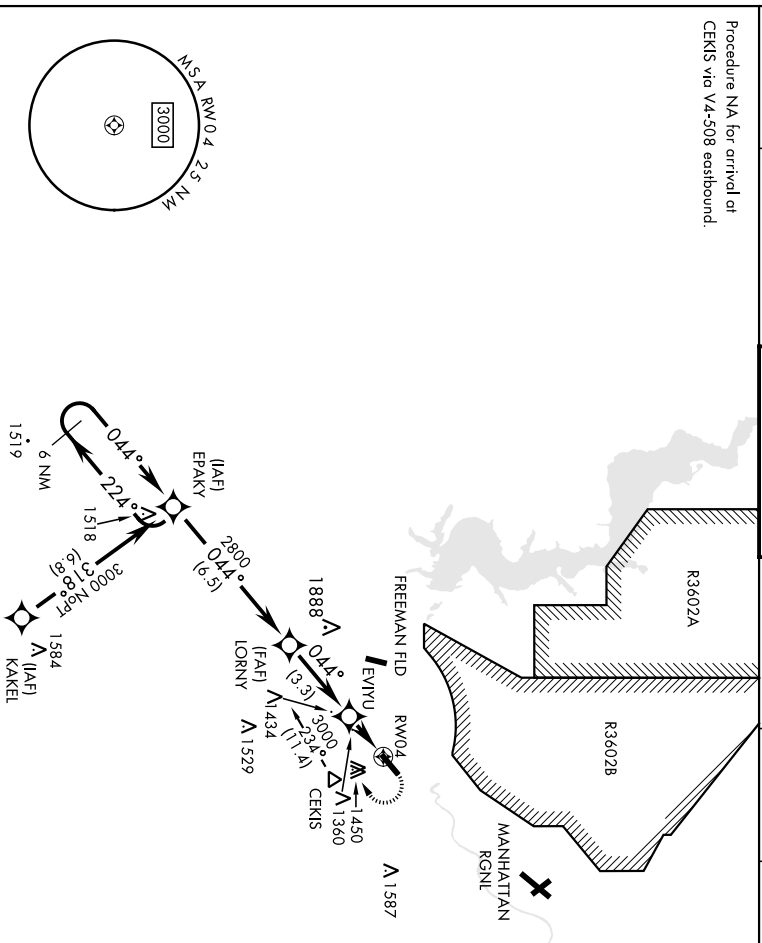
▼ * When ALS not increase CAT CD vis to 1 3/4 miles.
****** Circling not authorized NW of Rwy 4-22.
▲ NA Visibility reduction by helicopters NA



MISSED APPROACH: Climbing right turn to 3000 direct EPAKY and hold.

ATIS *	MARSHALL GCA	TOWER *	GND CON	CINC DEL	ASR/PAR
121.025	121.25 254.35	126.2 (CTAF) 248.65	140.20 229.4	119.65	

Procedure NA for arrival at CEKIS via V4-508 eastbound.



CATEGORY	A	B	C	D
LNAV MDA *	1660-1	594 (600-1)	1660-1 5/8 594 (600-1 5/8)	
CIRCLING **	1700-1	1760-1	1760-2	1900-2 3/4
	634 (700-1)	694 (700-1)	694 (700-2)	834 (900-2 3/4)

ELEV	1066	TDZE	1066
------	------	------	------

FORT RILEY, KANSAS
 Anch 1 20APR23
 MARSHALL AAF (KFRI)
RNAV (GPS) RWY 4
 39° 03' N 96° 46' W

VOR FRI	APCH CRS	Rwy/Ldg
109.4	036°	1066 TDZE Appt Elev 1066

AL-155 (USA)

MARSHALL AAF

(KFRI)

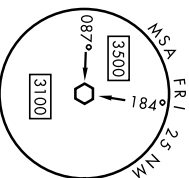
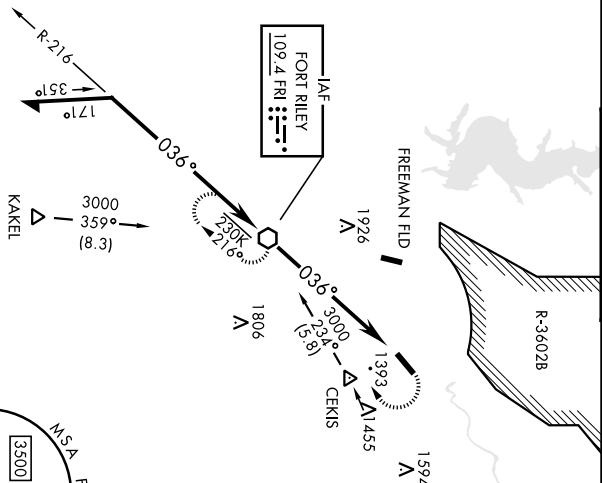
VOR RWY 4

✳ * Circling not authorized NM of Rwy 4-22.
Rwy 4 helicopter visibility reduction below 3/4 mile not authorized.

ODALS

MISSED APPROACH: Climbing right turn to 3000 direct FRI VOR and hold.

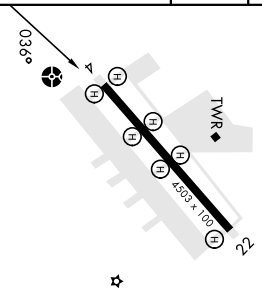
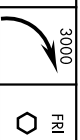
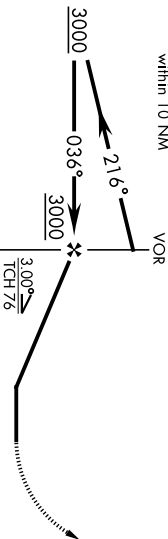
ATIS *	MARSHALL GCA	TOWER *	GND CON	CLNC DEL	ASR/PAR
121.025	121.25 254.35	126.2 (CTAF) 248.65	140.20 229.4	119.65	



ELEV	1066	TDZE	1066
------	------	------	------

Visibility segment - Obstacles

Remain within 10 NM



CATEGORY	A		B		C		D	
	M	D	M	D	M	D	M	D
S-4	1800-1	734 (800-1)	1800-2	734 (800-2)				
* CIRCLING	1800-1	734 (800-1)	1800-2	1900-2	734 (800-2)	834 (900-2)		

HRL Rwy 4-22 **1**

FAF to MAP 6.3 NM

	Knots	60	90	120	150	180
Mins:Sec	6:18	4:12	3:09	2:31	2:06	

FORT RILEY, KANSAS

39° 03'N+96° 46' W

MARSHALL AAF

(KFRI)

Archt 20 07SEP23

VOR RWY 4