

NDB FMZ	APP CRS	Rwy Idg	<b>4317</b>
<b>392</b>	<b>162°</b>	TDZE	<b>1636</b>
		Apt Elev	<b>1636</b>

# NDB RWY 17

FAIRMONT STATE (F<sup>M</sup>MZ)

**NA** Circling Rwy 12, 30 NA at night.  
Use York altimeter setting, when not received use Hebron altimeter setting and increase all MDA 40 feet.

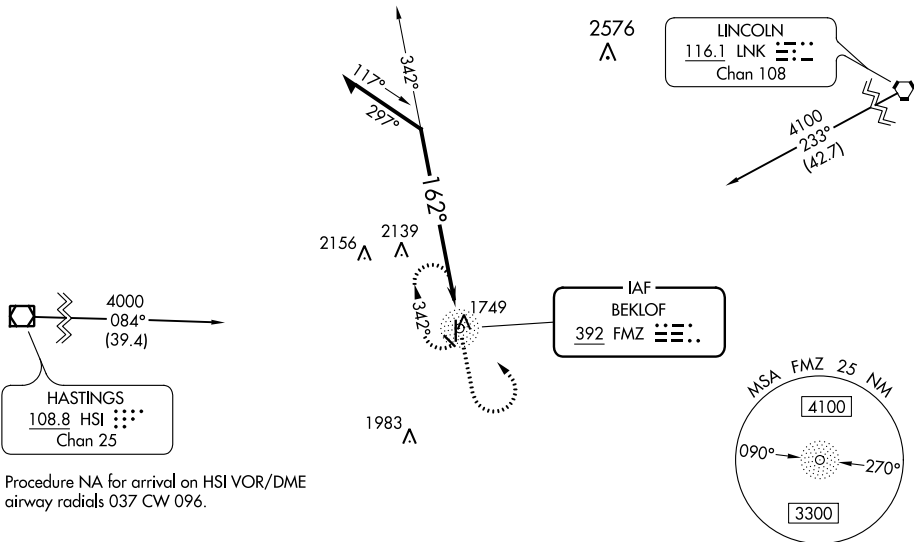
MISSED APPROACH: Climb to 3200 then left turn direct FMZ NDB and hold.

JYR AWOS-3  
**124.175**

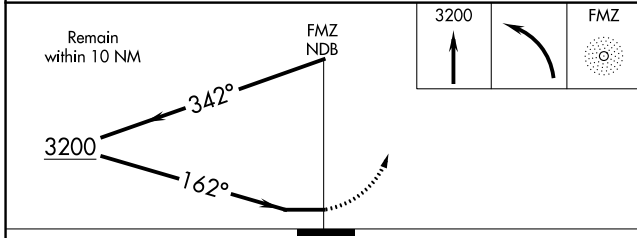
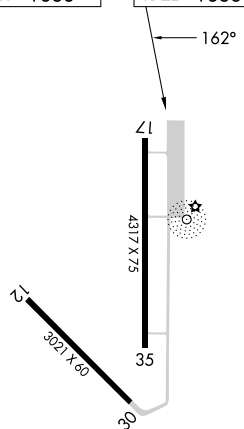
MINNEAPOLIS CENTER  
**119.4 278.8**

CTAF  
**122.9**

Procedure NA for arrival on LNK VORTAC  
airway radials 190 CW 258.



ELEV 1636	TDZE 1636
-----------	-----------



CATEGORY	A	B	C	D
S-17	2540-1¼	904 (1000-1¼)		NA
<b>C</b> CIRCLING	2540-1¼	904 (1000-1¼)		NA

MIRL Rwy 17-35

NC-2, 22 FEB 2024 to 21 MAR 2024

NC-2, 22 FEB 2024 to 21 MAR 2024

NDB FMZ <b>392</b>	APP CRS <b>001°</b>	Rwy Idg TDZE <b>1636</b> Apt Elev <b>1636</b>
-----------------------	------------------------	---

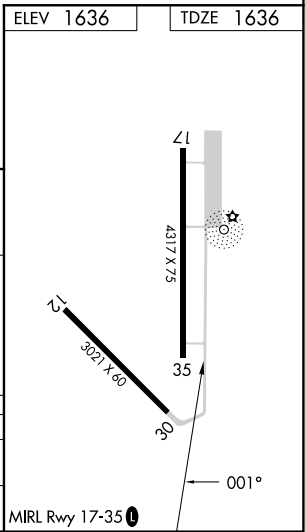
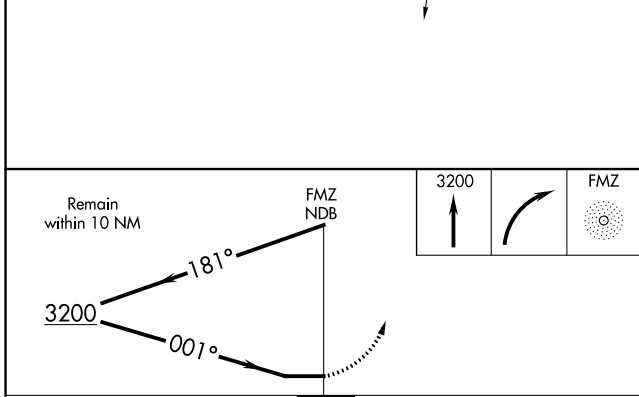
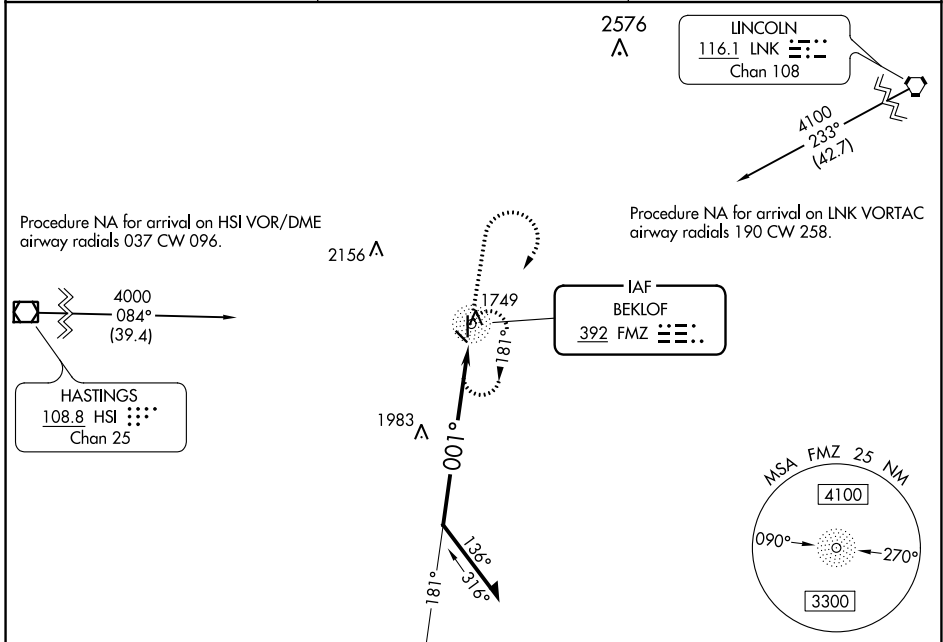
# NDB RWY 35

FAIRMONT STATE (F'MZ)

**NA** Circling Rwy 12, 30 NA at night.  
 Use York altimeter setting, when not received use Hebron altimeter setting and increase all MDA 40 feet and Circling Cat A visibility ¼ SM.

MISSED APPROACH: Climb to 3200 then right turn direct FMZ NDB and hold.

JYR AWOS-3 <b>124.175</b>	MINNEAPOLIS CENTER <b>119.4 278.8</b>	CTAF <b>122.90</b>
------------------------------	--	-----------------------



CATEGORY	A	B	C	D
S-35	2420-1 784 (800-1)	2420-1¼ 784 (800-1¼)	NA	
<b>C</b> CIRCLING	2420-1 784 (800-1)	2420-1¼ 784 (800-1¼)	NA	

NC-2, 22 FEB 2024 to 21 MAR 2024

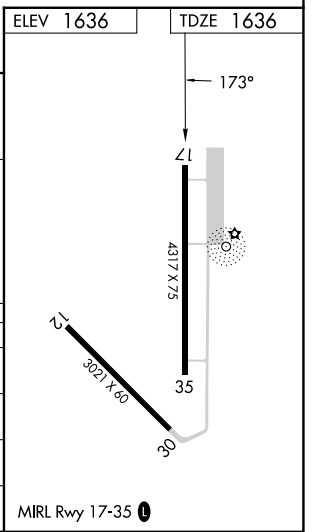
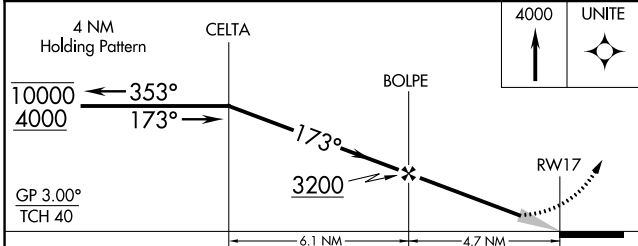
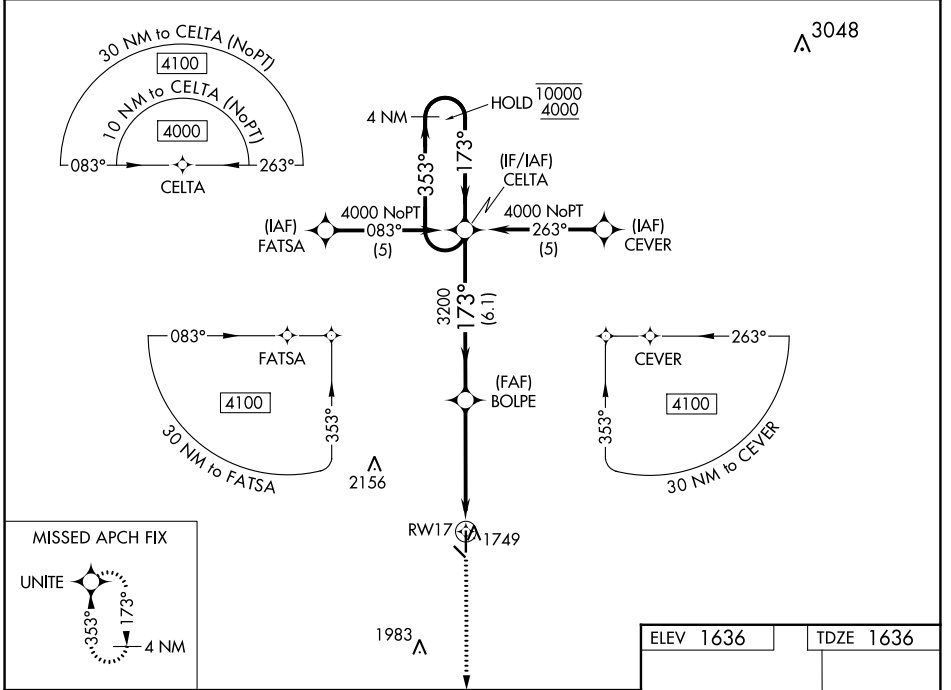
NC-2, 22 FEB 2024 to 21 MAR 2024

WAAS CH <b>69414</b> <b>W17A</b>	APP CRS <b>173°</b>	Rwy ldg <b>4317</b> TDZE <b>1636</b> Apt Elev <b>1636</b>
--	------------------------	---

# RNAV (GPS) RWY 17

FAIRMONT STATE (F<sup>M</sup>MZ)

RNP APCH.		MISSED APPROACH: Climb to 4000 direct UNITE and hold.
<p>⚠️ Circling to Rwy 12, 30 NA at night. Baro-VNAV NA. Use York altimeter setting, when not received use Hebron altimeter setting and increase all DA 31 feet and all MDA 40 feet.</p>		
JYR AWOS-3 <b>124.175</b>	MINNEAPOLIS CENTER <b>119.4 278.8</b>	CTAF <b>122.9</b>



CATEGORY	A	B	C	D
LPV DA	1934-1	298 (300-1)		NA
LNAV/VNAV DA	2043-1½	407 (500-1½)		NA
LNAV MDA	2240-1	604 (700-1)		NA
CIRCLING	2240-1	604 (700-1)		NA

NC-2, 22 FEB 2024 to 21 MAR 2024

NC-2, 22 FEB 2024 to 21 MAR 2024

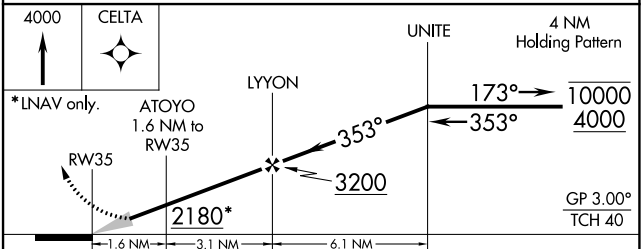
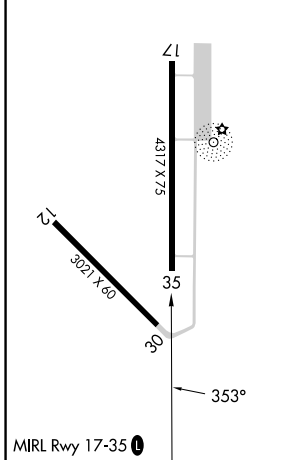
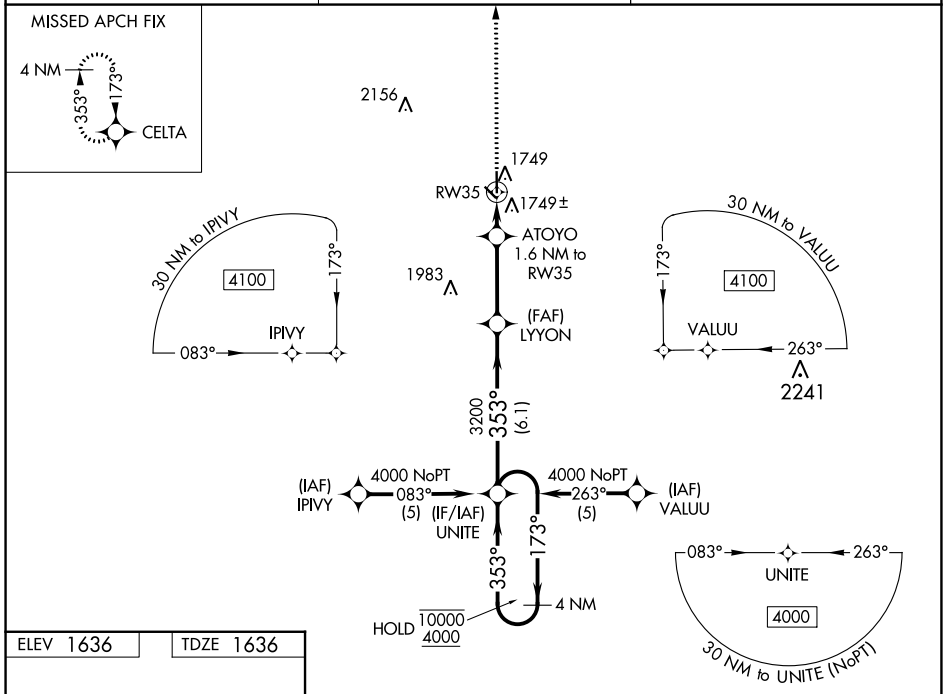
WAAS CH <b>93614</b> W35A	APP CRS <b>353°</b>	Rwy Idg <b>4317</b> TDZE <b>1636</b> Apt Elev <b>1636</b>
---------------------------------	------------------------	---

# RNAV (GPS) RWY 35

FAIRMONT STATE (F<sup>M</sup>MZ)

RNP APCH.	MISSED APPROACH: Climb to 4000 direct CELTA and hold.
<p>⚠️ Circling to Rwy 12, 30 NA at night. Baro-VNAV NA. Use York altimeter setting, when not received use Hebron altimeter setting and increase all DA 31 feet and all MDA 40 feet.</p>	

JYR AWOS-3 <b>124.175</b>	MINNEAPOLIS CENTER <b>119.4 278.8</b>	CTAF <b>122.9</b>
------------------------------	--	----------------------



CATEGORY	A	B	C	D
LPV DA	1934-1	298 (300-1)		NA
LNAV/VNAV DA	2094-1¾	458 (500-1¾)		NA
LNAV MDA	2060-1	424 (500-1)		NA
<b>C</b> CIRCLING	2120-1	484 (500-1)		NA

NC-2, 22 FEB 2024 to 21 MAR 2024

NC-2, 22 FEB 2024 to 21 MAR 2024