

WAAS CH <b>50318</b> <b>W13A</b>	APP CRS <b>131°</b>	Rwy Idg TDZE <b>14</b> Apt Elev <b>16</b>	<b>5152</b>
--	------------------------	---	-------------

# RNAV (GPS) RWY 13

FERNANDINA BEACH MUNI (FHB)

RNP APCH.

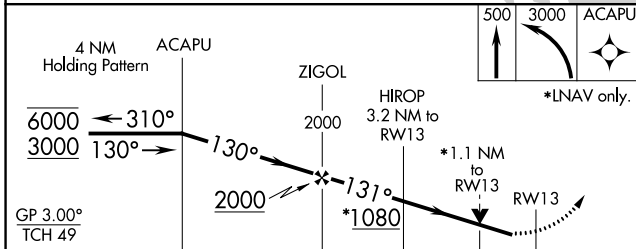
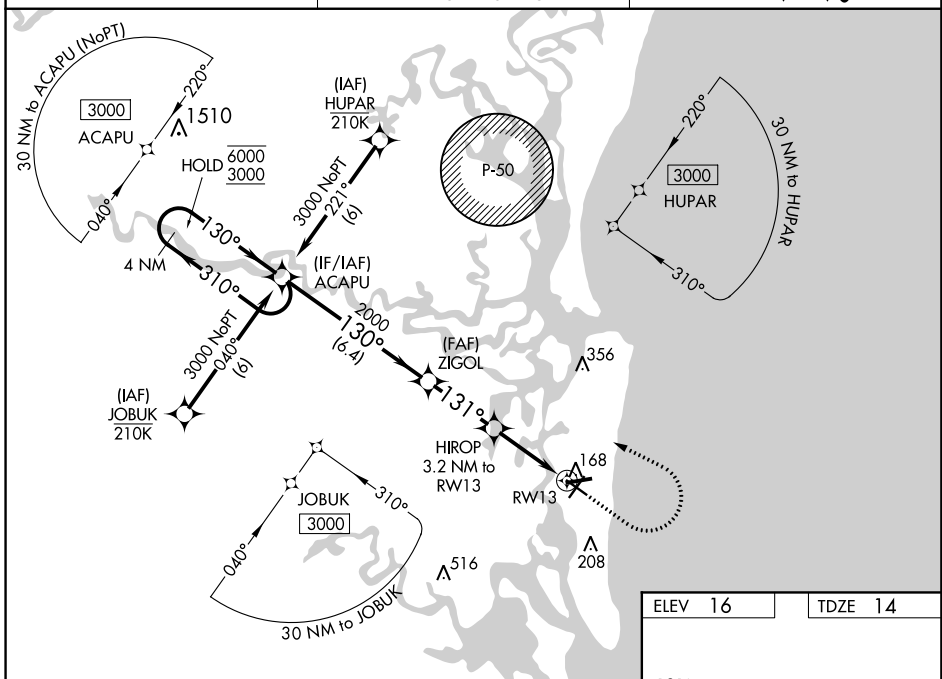
**⚠** Circling Rwy 9, 22, 27 NA at night. Rwy 13 helicopter visibility reduction below 3/4 SM NA. For uncompensated Baro-VNAV systems, LNAV/VNAV NA below -15°C or above 54°C.

**MISSED APPROACH:** Climb to 500 then climbing left turn to 3000 direct ACAPU and hold, continue climb-in-hold to 3000.

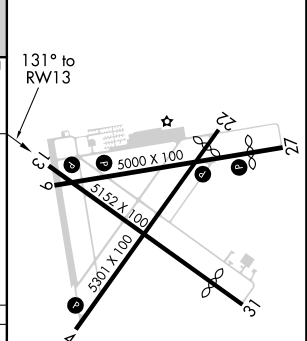
AWOS-3  
**118.075**

JACKSONVILLE APP CON  
**127.0 292.15**

UNICOM  
**122.7 (CTAF) 0**



ELEV 16	TDZE 14
---------	---------



CATEGORY	A	B	C	D
LPV DA		288-1	274 (300-1)	
LNAV/VNAV DA		443-1 3/8	429 (500-1 3/8)	
LNAV MDA	420-1	406 (500-1)	420-1 1/8	406 (500-1 1/8)
<b>C</b> CIRCLING	480-1	464 (500-1)	580-1 1/2	580-2
			564 (600-1 1/2)	564 (600-2)

REIL Rwy 4 and 13 **0**  
MIRL Rwy 4-22, 9-27 and 13-31 **0**

SE-3, 21 MAY 2020 to 18 JUN 2020

SE-3, 21 MAY 2020 to 18 JUN 2020

WAAS CH <b>50430</b> <b>W22A</b>	APP CRS <b>221°</b>	Rwy Idg TDZE Apt Elev	<b>4861</b> <b>16</b> <b>16</b>
--	------------------------	-----------------------------	---------------------------------------

# RNAV (GPS) RWY 22

FERNANDINA BEACH MUNI (FHB)

RNP APCH.

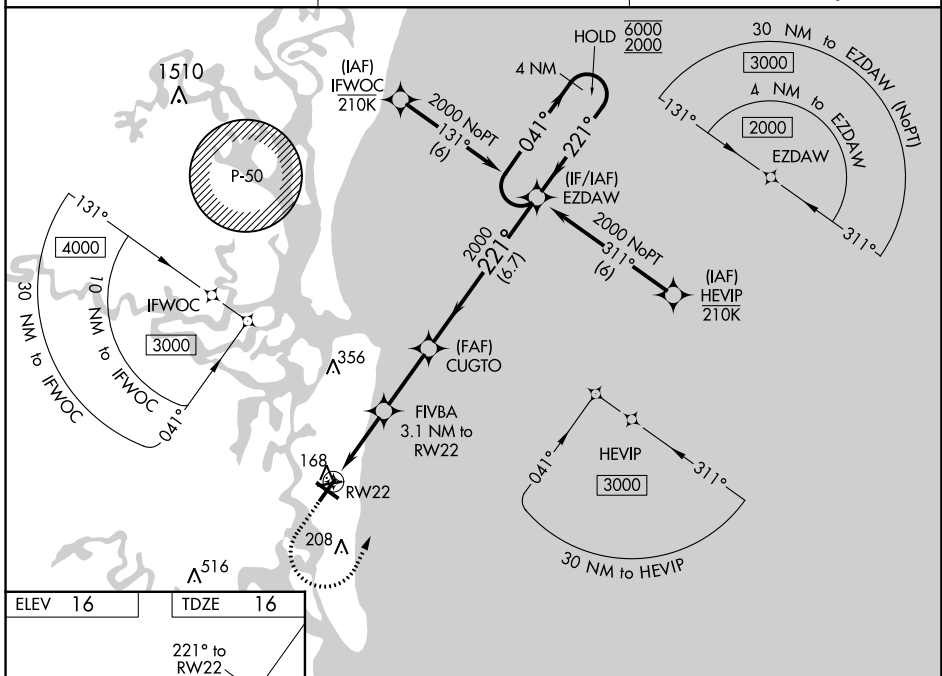
**⚠** Circling Rwy 9, 13, 22, 27 NA at night. Rwy 22 helicopter visibility reduction below 1 SM NA. For uncompensated Baro-VNAV systems, LNAV/VNAV NA below -15°C or above 54°C. Straight-in Rwy 22 NA at night.

MISSED APPROACH: Climb to 600 then climbing left turn to 2000 direct EZDAW and hold.

AWOS-3  
**118.075**

JACKSONVILLE APP CON  
**127.0 292.15**

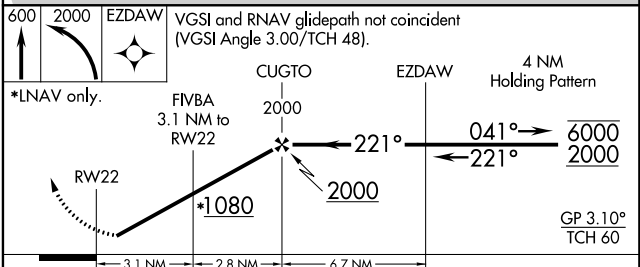
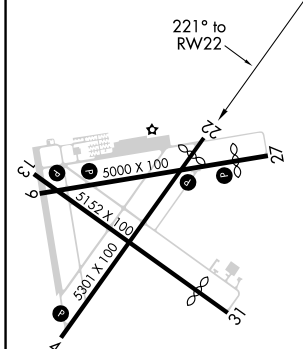
UNICOM  
**122.7 (CTAF)**



SE-3, 21 MAY 2020 to 18 JUN 2020

SE-3, 21 MAY 2020 to 18 JUN 2020

ELEV 16	TDZE 16
---------	---------



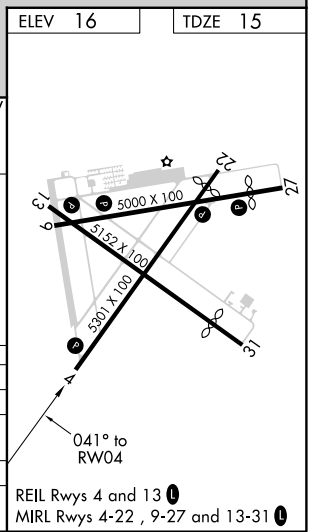
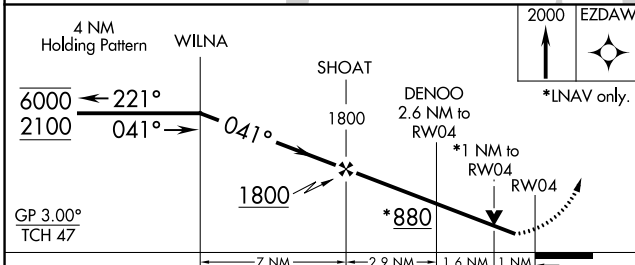
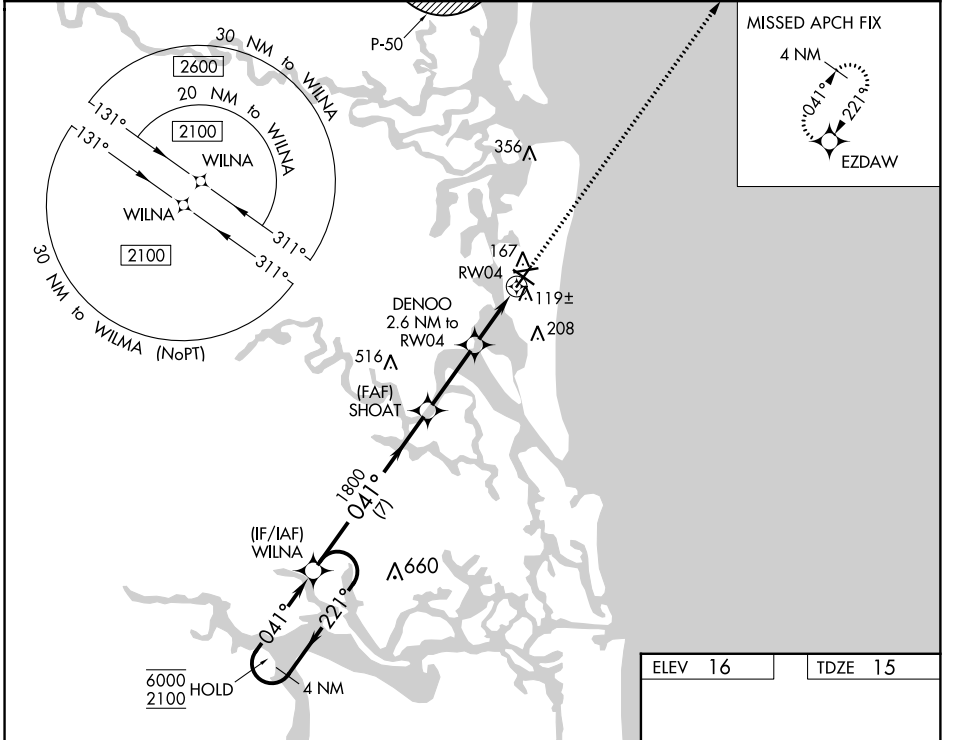
CATEGORY	A	B	C	D
LPV DA	320-1		304 (400-1)	
LNAV/VNAV DA	419-1½		403 (500-1½)	
LNAV MDA	420-1	404 (500-1)	420-1⅛	404 (500-1⅛)
<b>C</b> CIRCLING	480-1	464 (500-1)	580-1½	580-2
			564 (600-1½)	564 (600-2)

WAAS CH <b>90343</b> <b>W04A</b>	APP CRS <b>041°</b>	Rwy Idg TDZE Apt Elev	<b>5301</b> <b>15</b> <b>16</b>
--	------------------------	-----------------------------	---------------------------------------

# RNAV (GPS) RWY 4

FERNANDINA BEACH MUNI (FHB)

RNP APCH.		MISSED APPROACH: Climb to 2000 direct EZDAW and hold.
AWOS-3 <b>118.075</b>	JACKSONVILLE APP CON <b>127.0 292.15</b>	UNICOM <b>122.7 (CTAF) 0</b>



CATEGORY	A	B	C	D
LPV DA		265- <sup>3</sup> / <sub>4</sub>	250 (300- <sup>3</sup> / <sub>4</sub> )	
LNAV/VNAV DA		280- <sup>7</sup> / <sub>8</sub>	265 (300- <sup>7</sup> / <sub>8</sub> )	
LNAV MDA		380-1	365 (400-1)	
<b>C</b> CIRCLING	480-1	464 (500-1)	580-1 <sup>1</sup> / <sub>2</sub> 564 (600-1 <sup>1</sup> / <sub>2</sub> )	580-2 564 (600-2)

SE-3, 21 MAY 2020 to 18 JUN 2020

SE-3, 21 MAY 2020 to 18 JUN 2020