

WAAS CH <b>56625</b> <b>W04A</b>	APP CRS <b>039°</b>	Rwy Idg TDZE Apt Elev	<b>3799</b> <b>1383</b> <b>1394</b>
--	------------------------	-----------------------------	---

# RNAV (GPS) RWY 4L

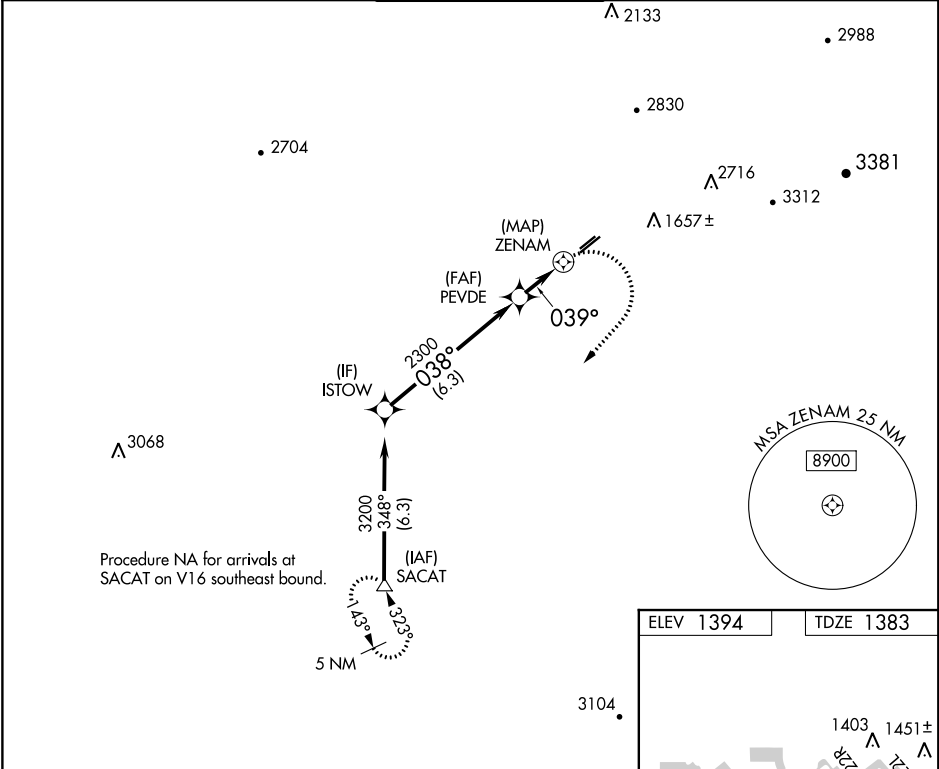
FALCON FIELD (F'F'Z)

RNP APCH.

**⚠** When local altimeter setting not received, use Phoenix Sky Harbor Intl altimeter setting and increase all MDA 80 feet and increase LP Cat C visibility ¼ SM and LNAV Cat C visibility ⅓ SM.

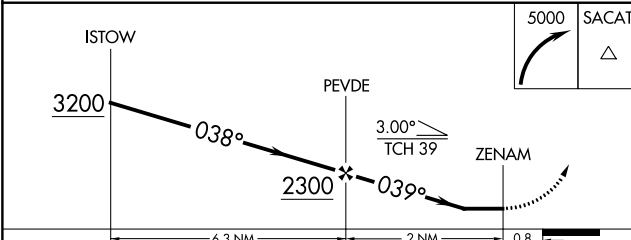
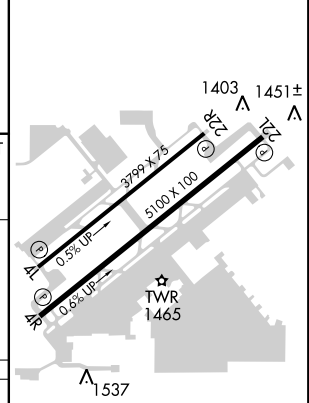
**MISSED APPROACH:** Climbing right turn to 5000 direct SACAT and hold, continue climb-in-hold to 5000.

ATIS <b>118,25</b>	PHOENIX APP CON <b>120.7 239.0</b>	FALCON TOWER ★ <b>124.6 (CTAF) 0</b>	GND CON <b>121.3</b>	UNICOM <b>122.95</b>
-----------------------	---------------------------------------	---	-------------------------	-------------------------



Procedure NA for arrivals at SACAT on V16 southeast bound.

ELEV 1394	TDZE 1383
-----------	-----------



CATEGORY	A	B	C	D
LP MDA	1780-1	397 (400-1)	1780-1 ⅛ 397 (400-1 ⅛)	NA
LNAV MDA	1800-1	417 (500-1)	1800-1 ¼ 417 (500-1 ¼)	NA

REIL Rwy 4L, 4R and 22R  
MIRL Rwy 4R-22L **0**  
MIRL Rwy 4L-22R

WAAS CH <b>90525</b> <b>W04B</b>	APP CRS <b>039°</b>	Rwy Idg TDZE Apt Elev	<b>5100</b> <b>1383</b> <b>1394</b>
--	------------------------	-----------------------------	---

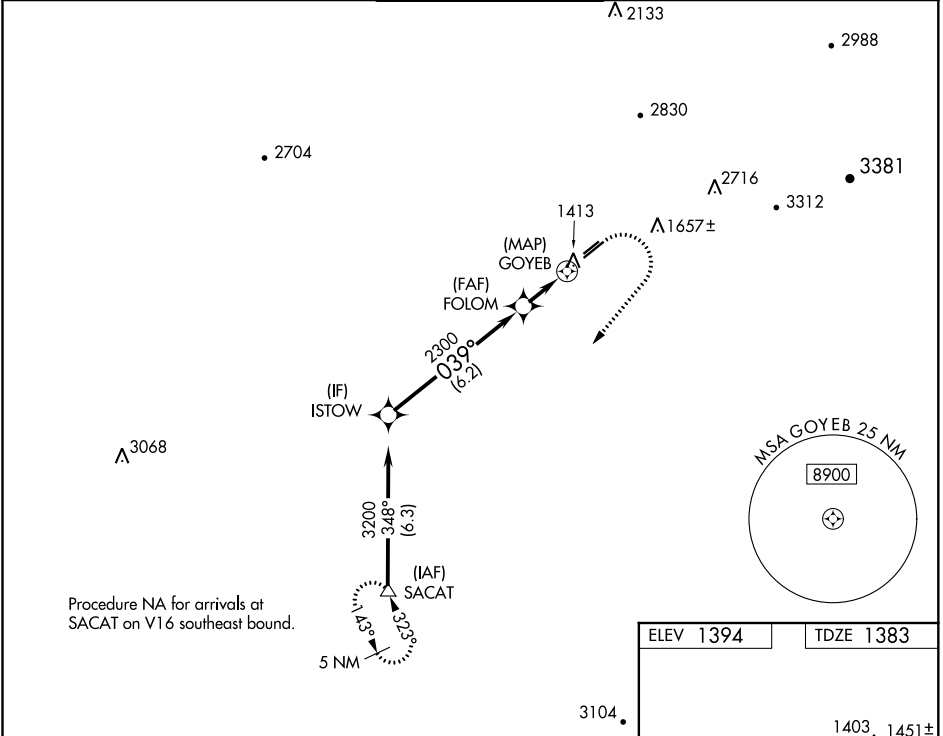
# RNAV (GPS) RWY 4R

FALCON FIELD (F'F'Z)

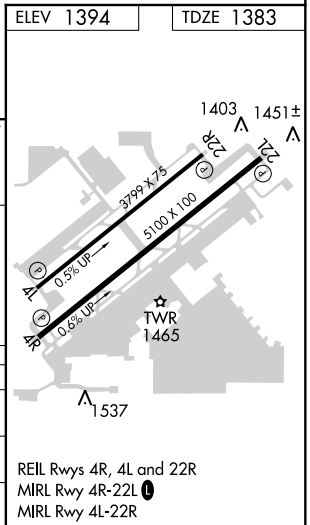
**⚠** DME/DME RNP-0.3 NA. When local altimeter setting not received, use Phoenix Sky Harbor Intl altimeter setting and increase all MDA 80 feet and increase LNAV Cat C visibility 1/8 mile. Helicopter visibility reduction below 1 SM NA.

**MISSED APPROACH:** Climb to 1900 then climbing right turn to 5000 direct SACAT and hold, continue climb-in-hold to 5000.

ATIS <b>118.25</b>	PHOENIX APP CON <b>120.7 239.0</b>	FALCON TOWER ★ <b>124.6 (CTAF)</b> <b>0</b>	GND CON <b>121.3</b>	UNICOM <b>122.95</b>
-----------------------	---------------------------------------	--	-------------------------	-------------------------



ISTOW	VGSI and descent angles not coincident (VGSI Angle 4.00/TCH 42).			1900	5000	SACAT
				↑	↷	△
3200	039°	FOLOM	2300	3.00°	TCH 41	GOYEB
6.2 NM		2 NM		0.8		
CATEGORY	A	B	C	D		
LP MDA	1680-1 297 (300-1)			NA		
LNAV MDA	1800-1	417 (500-1)	1800-1½ 417 (500-1½)	NA		
CIRCLING	1900-1	506 (600-1)	1900-1½ 506 (600-1½)	NA		



SW-4, 10 SEP 2020 to 08 OCT 2020

SW-4, 10 SEP 2020 to 08 OCT 2020

APP CRS	Rwy Idg	N/A
<b>122°</b>	TDZE	N/A
	Apt Elev	<b>1394</b>

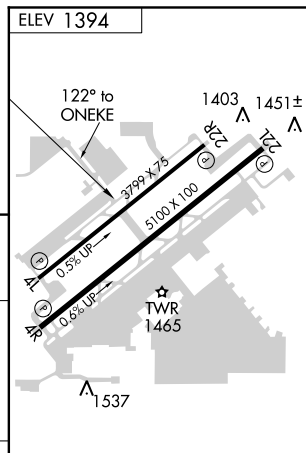
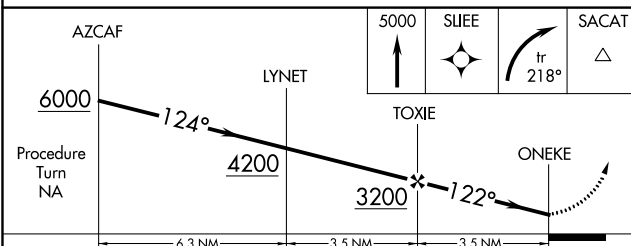
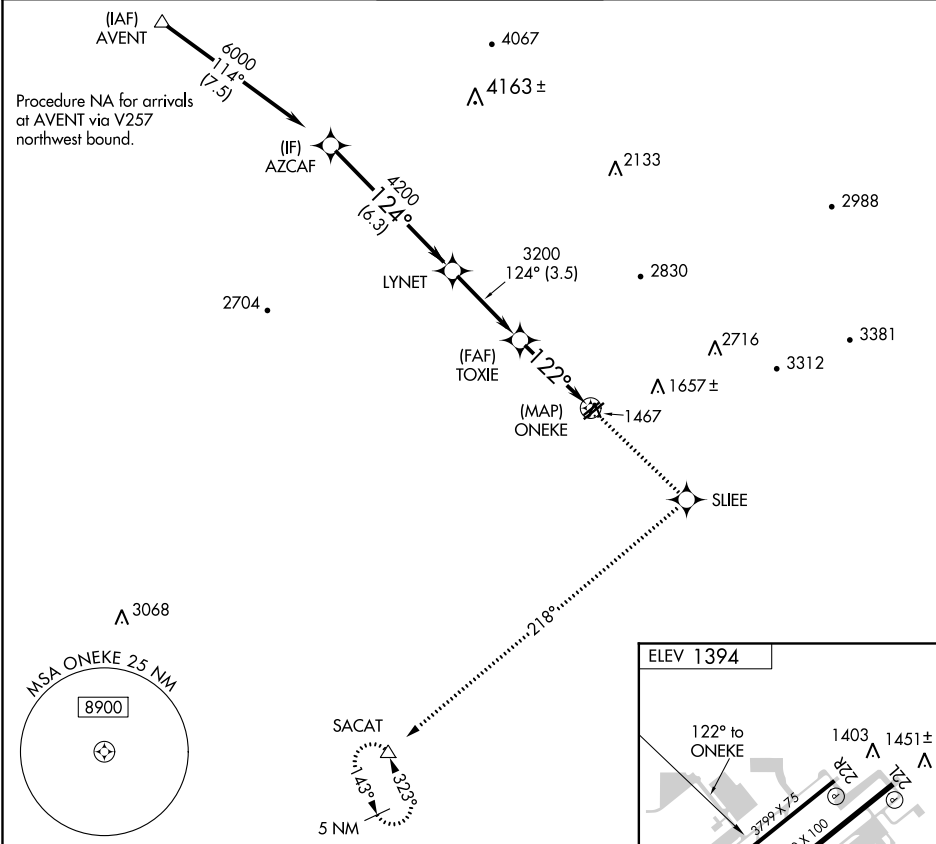
# RNAV (GPS)-B

FALCON FIELD (F'F'Z)

**▽** DME/DME RNP- 0.3 NA.  
**▲** When local altimeter setting not received, use Phoenix Sky Harbor Intl altimeter setting and increase all MDA 80 feet.

**MISSED APPROACH:** Climb to 5000 direct SLIEE and right turn on track 218° to SACAT and hold, continue climb-in-hold to 5000.

ATIS <b>118.25</b>	PHOENIX APP CON <b>120.7 239.0</b>	FALCON TOWER * <b>124.6 (CTAF) 0</b>	GND CON <b>121.3</b>	UNICOM <b>122.95</b>
-----------------------	---------------------------------------	---	-------------------------	-------------------------



CATEGORY	A	B	C	D
CIRCLING	1900-1	506 (600-1)	1900-1½ 506 (600-1½)	NA

REIL Rwy 4R, 4L and 22R  
 MIRL Rwy 4R-22L **0**  
 MIRL Rwy 4L-22R

SW-4, 10 SEP 2020 to 08 OCT 2020

SW-4, 10 SEP 2020 to 08 OCT 2020