

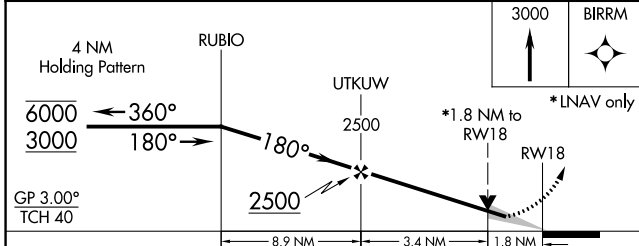
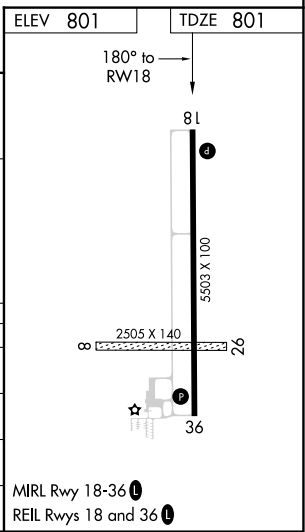
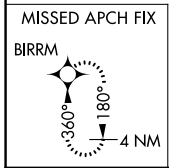
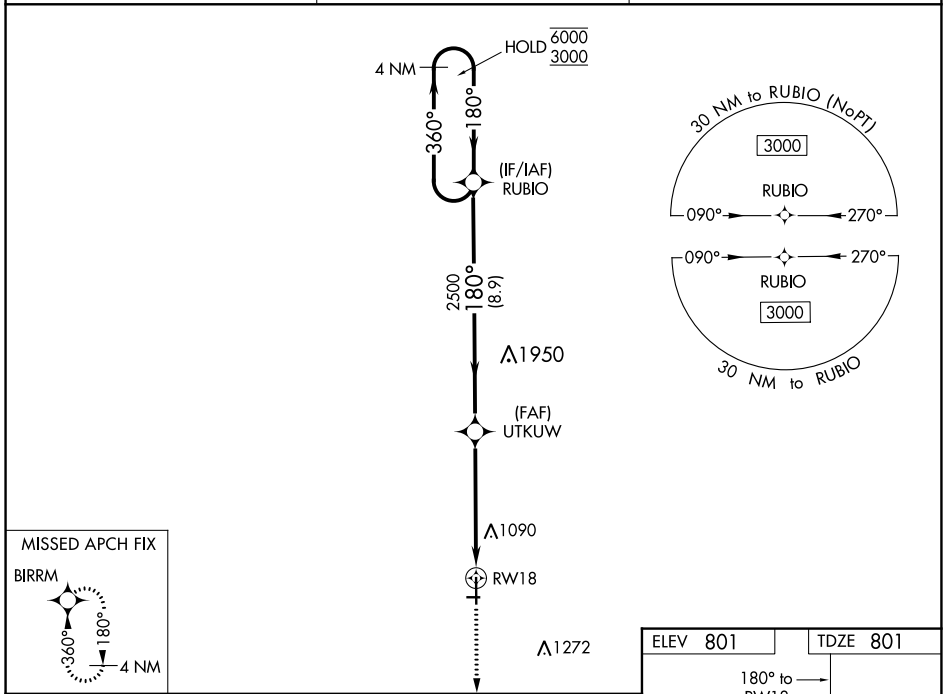
WAAS CH 82503 W18A	APP CRS 180°	Rwy Idg TDZE Apt Elev	5503 801 801
--	------------------------	-----------------------------	---

RNAV (GPS) RWY 18

FAIRFIELD MUNI (F'FL)

RNP APCH.	MISSED APPROACH: Climb to 3000 direct BIRRM and hold.
Circling NA to Rwys 8 and 26. For uncompensated Baro-VNAV systems, LNAV/VNAV NA below -16°C or above 54°C.	

AWOS-3 132,025	CHICAGO CENTER 118.15 335.575	UNICOM 122.7 (CTAF)
--------------------------	---	-------------------------------



CATEGORY	A	B	C	D
LPV DA	1001-3/4	200 (200-3/4)		NA
LNAV/VNAV DA	1471-17/8	670 (700-17/8)		NA
LNAV MDA	1400-1	599 (600-1)	1400-1 3/4 599 (600-1 3/4)	NA
C CIRCLING	1400-1 599 (600-1)	1440-1 639 (700-1)	1440-1 3/4 639 (700-1 3/4)	NA

NC-3, 22 FEB 2024 to 21 MAR 2024

NC-3, 22 FEB 2024 to 21 MAR 2024

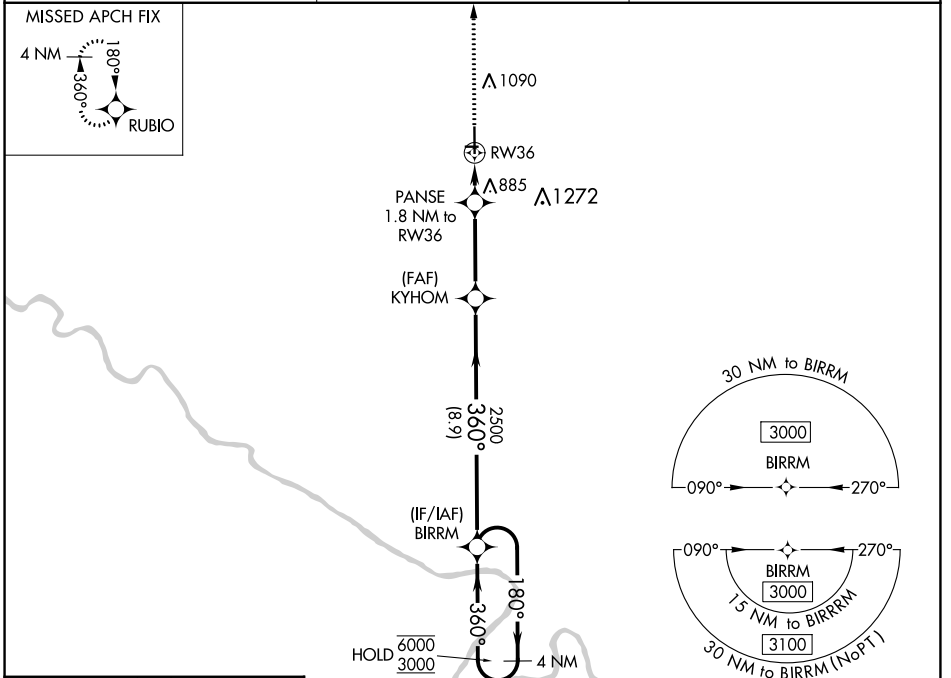
WAAS CH 72804 W36A	APP CRS 360°	Rwy Idg 5503 TDZE 799 Apt Elev 801
--	------------------------	---

RNAV (GPS) RWY 36

FAIRFIELD MUNI (F'FL)

RNP APCH.	MISSED APPROACH: Climb to 3000 direct RUBIO and hold.
<p>⚠ Circling NA to Rwy's 8 and 26. For uncompensated Baro-VNAV systems, LNAV/VNAV NA below -16°C or above 54°C.</p>	

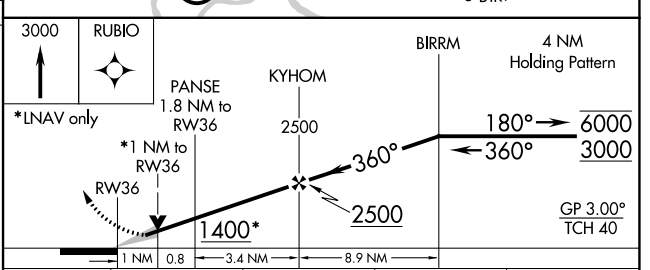
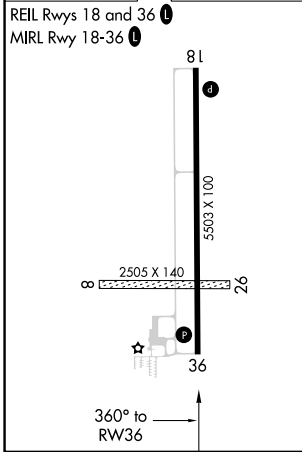
AWOS-3 132.025	CHICAGO CENTER 118.15 335.575	UNICOM 122.7 (CTAF)
--------------------------	---	-------------------------------



NC-3, 22 FEB 2024 to 21 MAR 2024

NC-3, 22 FEB 2024 to 21 MAR 2024

ELEV 801	TDZE 799
-----------------	-----------------



CATEGORY	A	B	C	D
LPV DA	999- ³ / ₄	200 (200- ³ / ₄)		NA
LNAV/VNAV DA	1049- ³ / ₄	250 (300- ³ / ₄)		NA
LNAV MDA	1140-1	341 (400-1)		NA
C CIRCLING	1200-1 399 (400-1)	1440-1 639 (700-1)	1440-1 ³ / ₄ 639 (700-1 ³ / ₄)	NA