

LOC I-OUP <b>111.5</b>	APP CRS <b>274°</b>	Rwy Idg <b>6500</b>
		TDZE <b>778</b>
		Apt Elev <b>778</b>

# ILS or LOC RWY 27

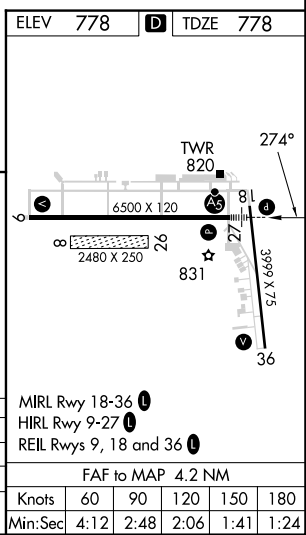
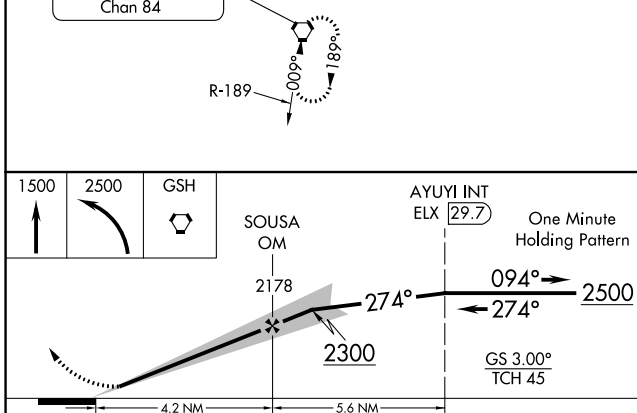
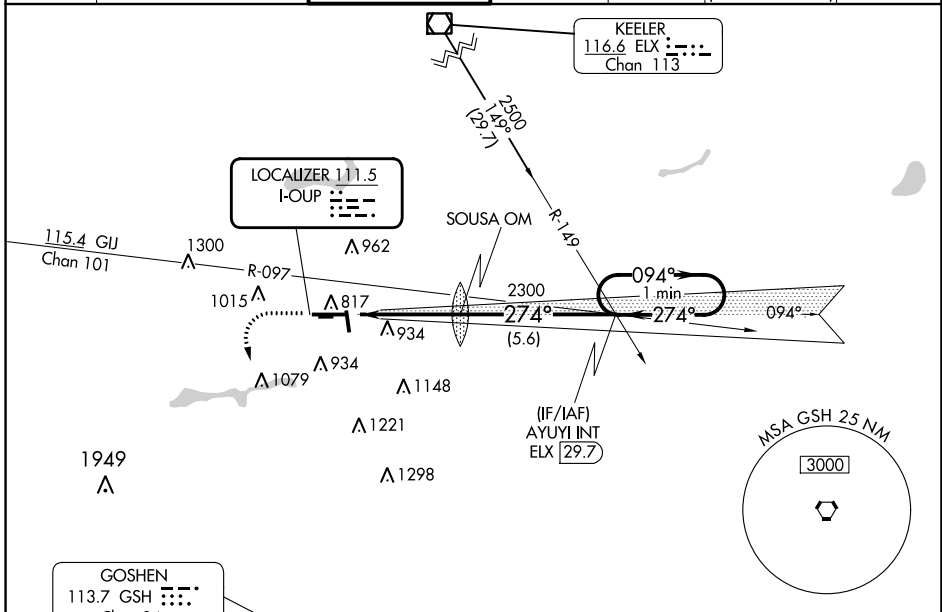
ELKHART MUNI (EKM)

**⚠** When local altimeter setting not received, use South Bend altimeter setting and increase all DA/MDA 40 feet, and increase S-LOC 27 Cat C/D visibility to RVR 5000. Circling Rwy 36 NA at night. Circling NA to Rws 8 and 26. Rwy 27 helicopter visibility reduction below RVR 4000 NA. For inop ALS, increase S-ILS 27 all Cats visibility to RVR 4500 and S-LOC 27 Cat A/B visibility to RVR 5500. For inop ALS when using South Bend altimeter setting, increase S-LOC 27 Cat A/B visibility to RVR 5500 and Cat C/D visibility to 1 1/2 SM.

**MALS**  
AS

**MISSED APPROACH:**  
Climb to 1500 then climbing left turn to 2500 direct GSH VORTAC and hold.

AWOS-3 <b>124.475</b>	SOUTH BEND APP CON * <b>118.55 257.8</b>	ELKHART TOWER * <b>119.5 (CTAF) 0</b>	GND CON <b>121.8</b>	CLNC DEL <b>121.8</b>	CLNC DEL <b>119.7</b> (When twr closed)	UNICOM <b>122.95</b>
--------------------------	---	--	-------------------------	--------------------------	---	-------------------------



CATEGORY	A	B	C	D
S-ILS 27		1066/40	288 (300-3/4)	
S-LOC 27	1220/40	442 (500-3/4)	1220/45	442 (500-7/8)
<b>C</b> CIRCLING	1240-1 462 (500-1)	1300-1 522 (600-1)	1380-1 3/4 602 (700-1 3/4)	1580-2 1/2 802 (900-2 1/2)

EC-2, 22 FEB 2024 to 21 MAR 2024

EC-2, 22 FEB 2024 to 21 MAR 2024

APP CRS	Rwy Idg	<b>3999</b>
<b>176°</b>	TDZE	<b>777</b>
	Apt Elev	<b>778</b>

# RNAV (GPS) RWY 18

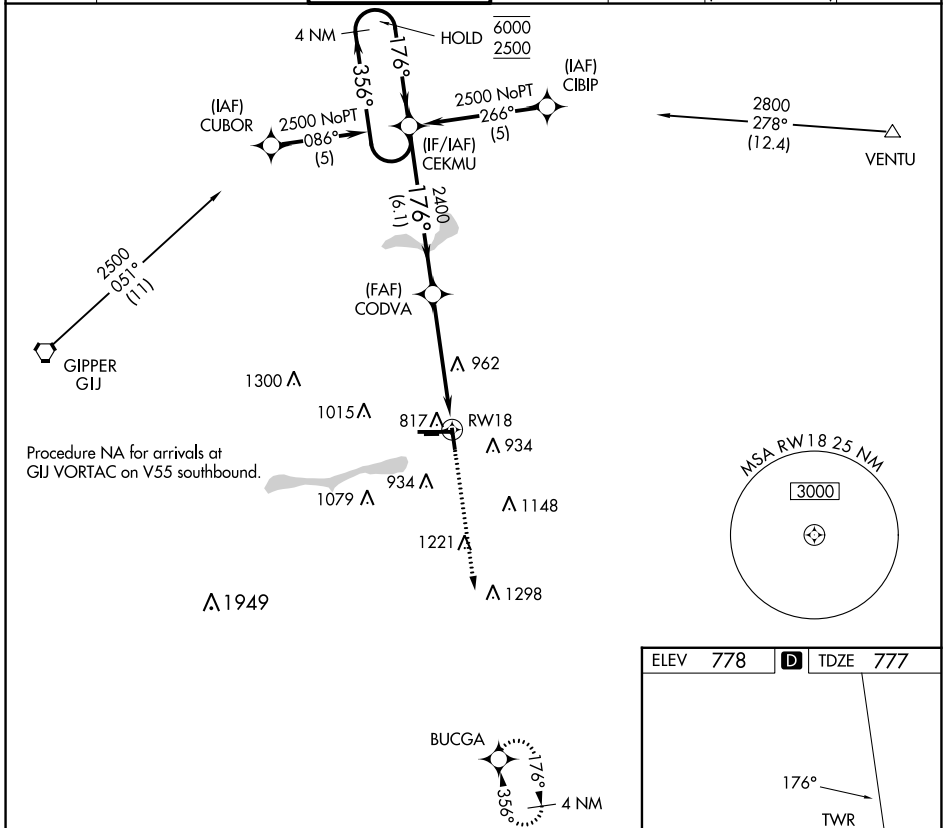
ELKHART MUNI (EKM)

RNP APCH - GPS

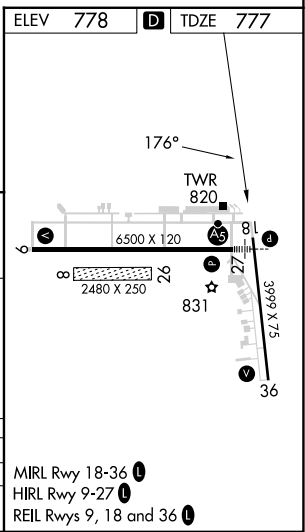
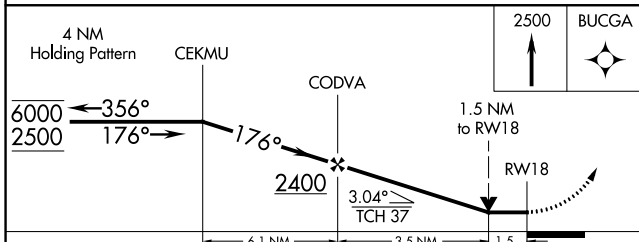
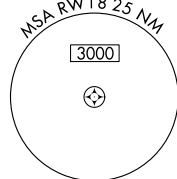
**⚠** Circling NA to Rwy 8 and 26. Circling to Rwy 36 NA at night. Rwy 18 helicopter visibility reduction below ¼ SM NA. VDP NA with South Bend altimeter setting. When local altimeter setting not received, use South Bend altimeter setting and increase all MDAs 40 feet.

**MISSED APPROACH:** Climb to 2500 direct BUCGA and hold.

AWOS-3	SOUTH BEND APP CON ★	ELKHART TOWER ★	GND CON	CLNC DEL	CLNC DEL	UNICOM
<b>124.475</b>	<b>118.55 257.8</b>	<b>119.5 (CTAF) 0</b>	<b>121.8</b>	<b>121.8</b>	<b>119.7</b> (When twr closed)	<b>122.95</b>



Procedure NA for arrivals at GIJ VORTAC on V55 southbound.



CATEGORY	A	B	C	D
LNAV MDA	1280-1	503 (600-1)	1280-1 <sup>3</sup> / <sub>8</sub>	503 (600-1 <sup>3</sup> / <sub>8</sub> )
<b>C</b> CIRCLING	1280-1 502 (600-1)	1300-1 522 (600-1)	1380-1 <sup>3</sup> / <sub>4</sub> 602 (700-1 <sup>3</sup> / <sub>4</sub> )	1580-2 <sup>1</sup> / <sub>2</sub> 802 (900-2 <sup>1</sup> / <sub>2</sub> )

MIRL Rwy 18-36 **ⓘ**  
 HIRL Rwy 9-27 **ⓘ**  
 REIL Rwy 9, 18 and 36 **ⓘ**

EC-2, 22 FEB 2024 to 21 MAR 2024

EC-2, 22 FEB 2024 to 21 MAR 2024


WAAS CH <b>50107</b> <b>W27A</b>	APP CRS <b>274°</b>	Rwy Idg TDZE <b>778</b> Apt Elev <b>778</b>	<b>6500</b>
--	------------------------	---	-------------

# RNAV (GPS) RWY 27

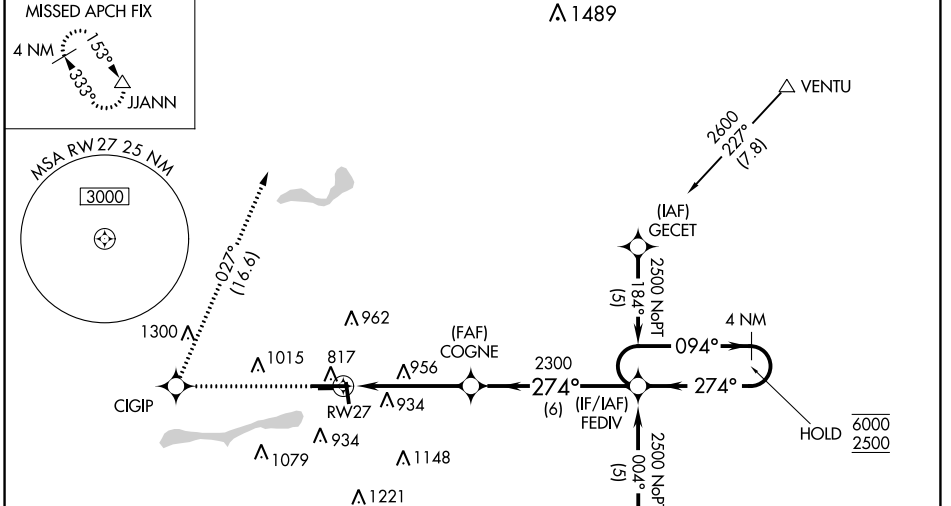
ELKHART MUNI (EKM)

RNP APCH - GPS.

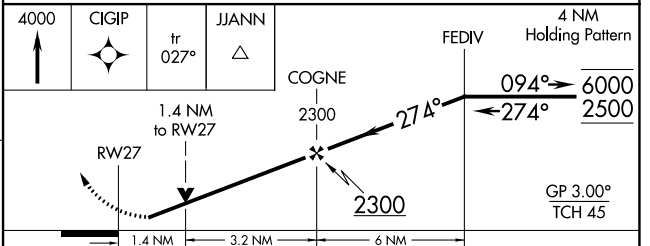
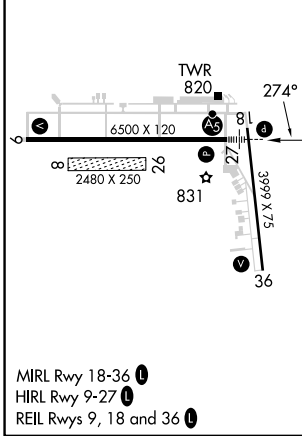
**⚠** Circling NA to Rwy 8 and 26. Circling Rwy 36 NA at night. Baro-VNAV and VDP NA when using South Bend altimeter setting. Rwy 27 helicopter visibility reduction below RVR 4000 NA. For uncompensated Baro-VNAV systems, LNAV/VNAV NA below -16°C or above 54°C. When local altimeter setting not received, use South Bend altimeter setting: increase LPV DA to 1111 feet; increase LNAV/VNAV DA to 1261 feet; increase all MDA 40 feet and LNAV visibility Cat C/D to RVR 5500, Circling Cat D visibility ½ SM. For inop ALS, increase LPV all Cats visibility to RVR 4500, LNAV/VNAV all Cats visibility to 1¾ SM, LNAV Cat A/B visibility to RVR 5500 and Cat C/D to 1¾ SM. For inop ALS when using South Bend altimeter setting, increase LNAV/VNAV all Cats visibility to 1¾ SM and LNAV Cat A/B to RVR 5500.

**MALSRS**  MISSED APPROACH: Climb to 4000 direct CIGIP and on track 027° to JJANN and hold.

AWOS-3 <b>124.475</b>	SOUTH BEND APP CON * <b>118.55 257.8</b>	ELKHART TOWER * <b>119.5 (CTAF) 0</b>	GND CON <b>121.8</b>	CLNC DEL <b>121.8</b>	CLNC DEL <b>119.7</b> (When twr closed)	UNICOM <b>122.95</b>
--------------------------	---	--	-------------------------	--------------------------	---	-------------------------



ELEV 778	<b>D</b>	TDZE 778
----------	----------	----------



CATEGORY	A	B	C	D
LPV DA	1071/40 293 (300-¾)			
LNAV/VNAV DA	1221/50 443 (500-1)			
LNAV MDA	1260/40 482 (500-¾)	1260/50 482 (500-1)		
<b>C</b> CIRCLING	1260-1 482 (500-1)	1300-1 522 (600-1)	1380-1¾ 602 (700-1¾)	1580-2½ 802 (900-2½)

EC-2, 22 FEB 2024 to 21 MAR 2024

EC-2, 22 FEB 2024 to 21 MAR 2024

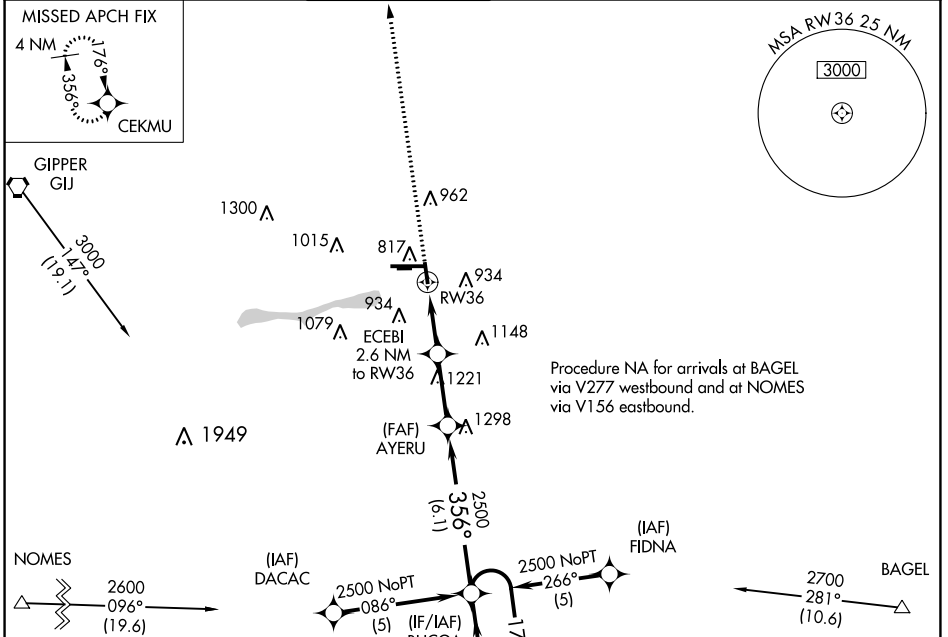
APP CRS	Rwy Idg	<b>3999</b>
<b>356°</b>	TDZE	<b>776</b>
	Apt Elev	<b>778</b>

# RNAV (GPS) RWY 36

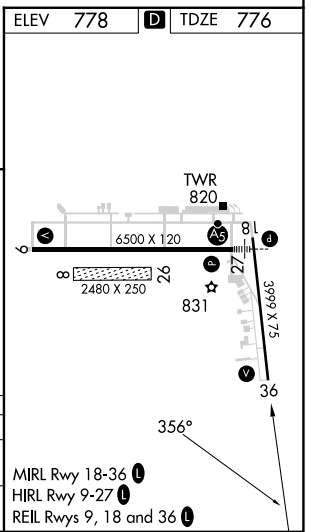
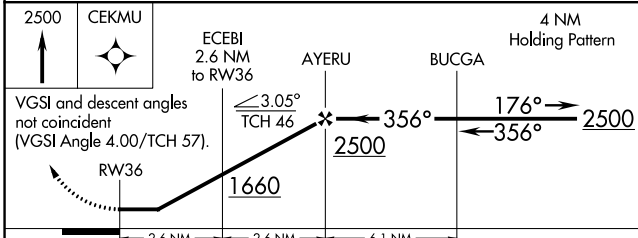
ELKHART MUNI (EKM)

RNP APCH.				MISSED APPROACH: Climb to 2500 direct CEKMU and hold.	
<p><b>▼</b> When local altimeter setting not received, use South Bend altimeter setting and increase all MDA 40 feet. Straight-in and Circling RWY 36 NA at night. Rwy 36 helicopter visibility reduction below 1 SM NA. Circling NA to Rwys 8 and 26.</p>					

AWOS-3	SOUTH BEND APP CON *	ELKHART TOWER *	GND CON	CLNC DEL	CLNC DEL	UNICOM
<b>124.475</b>	<b>118.55 257.8</b>	<b>119.5 (CTAF) 0</b>	<b>121.8</b>	<b>121.8</b>	<b>119.7</b> (When twr closed)	<b>122.95</b>



ELEV	<b>778</b>	<b>D</b>	TDZE	<b>776</b>
------	------------	----------	------	------------



CATEGORY	A	B	C	D
LNVA MDA	1220-1 444 (500-1)	1220-1 444 (500-1)	1220-1 1/4 444 (500-1 1/4)	1220-1 1/2 444 (500-1 1/2)
<b>C</b> CIRCLING	1240-1 462 (500-1)	1300-1 522 (600-1)	1380-1 3/4 602 (700-1 3/4)	1580-2 1/2 802 (900-2 1/2)

EC-2, 22 FEB 2024 to 21 MAR 2024

EC-2, 22 FEB 2024 to 21 MAR 2024

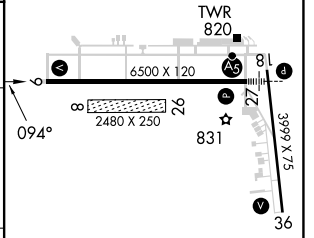
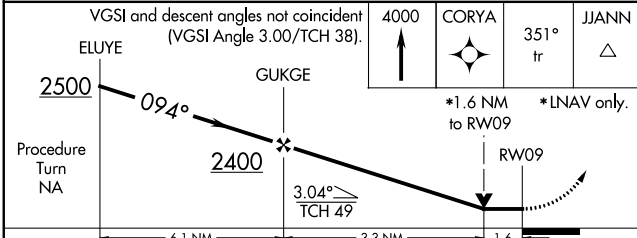
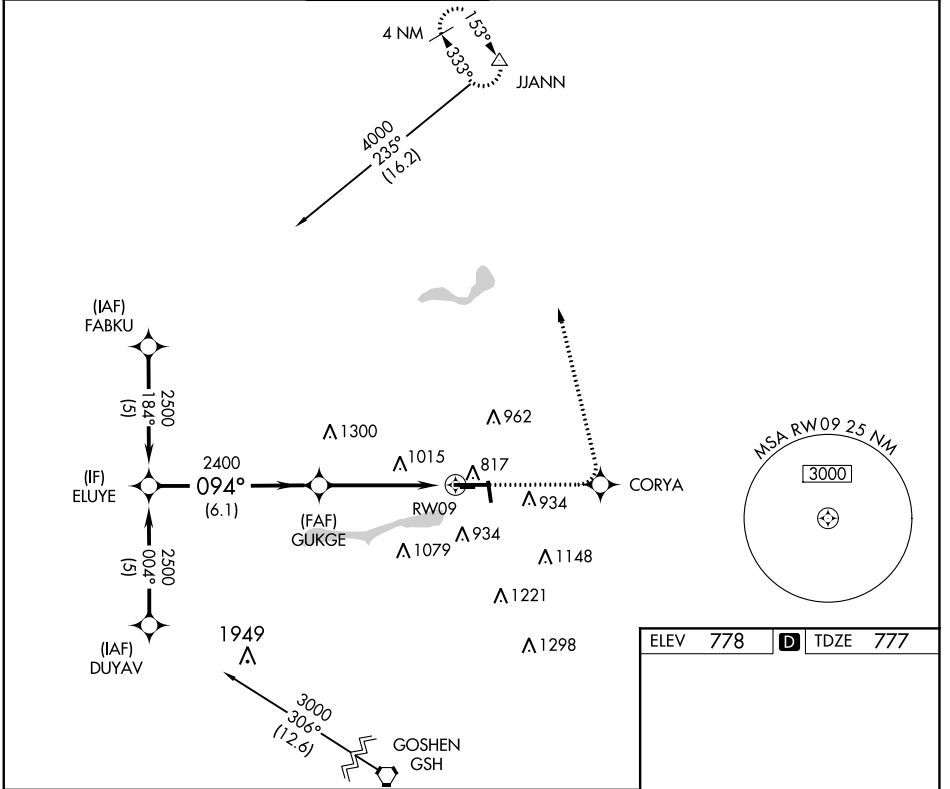
MIRL Rwy 18-36  
HIRL Rwy 9-27  
REIL Rws 9, 18 and 36

APP CRS	Rwy Idg	<b>6500</b>
<b>094°</b>	TDZE	<b>777</b>
	Apt Elev	<b>778</b>

# RNAV (GPS) RWY 9

ELKHART MUNI (EKM)

RNP APCH.				MISSED APPROACH: Climb to 4000 direct CORYA and via 351° track to JJANN and hold.	
<p><b>▼</b> VDP NA when using South Bend altimeter setting. Circling Rwy 36 NA at night. Circling NA to Rwy 8 and 26. Rwy 9 helicopter visibility reduction below 3/4 SM NA. When local altimeter setting not received, use South Bend altimeter setting and increase all MDA 40 feet.</p> <p><b>▲</b></p>					
AWOS-3	SOUTH BEND APP CON *	ELKHART TOWER *	GND CON	CLNC DEL	CLNC DEL
<b>124.475</b>	<b>118.55 257.8</b>	<b>119.5 (CTAF)</b>	<b>121.8</b>	<b>121.8</b>	<b>119.7</b> (When twr closed)
				UNICOM	<b>122.95</b>



CATEGORY	A	B	C	D
LNVA MDA	1340-1	563 (600-1)	1340-1½ 563 (600-1½)	1340-1¾ 563 (600-1¾)
<b>C</b> CIRCLING	1340-1	562 (600-1)	1380-1¾ 602 (700-1¾)	1580-2½ 802 (900-2½)

MIRL Rwy 18-36  
HIRL Rwy 9-27  
REIL Rwy 9, 18 and 36

EC-2, 22 FEB 2024 to 21 MAR 2024

EC-2, 22 FEB 2024 to 21 MAR 2024

VORTAC GJ <b>115.4</b> Chan <b>101</b>	APP CRS <b>102°</b>	Rwy Idg TDZE <b>777</b> Apt Elev <b>778</b>	<b>6500</b>
--	------------------------	---	-------------

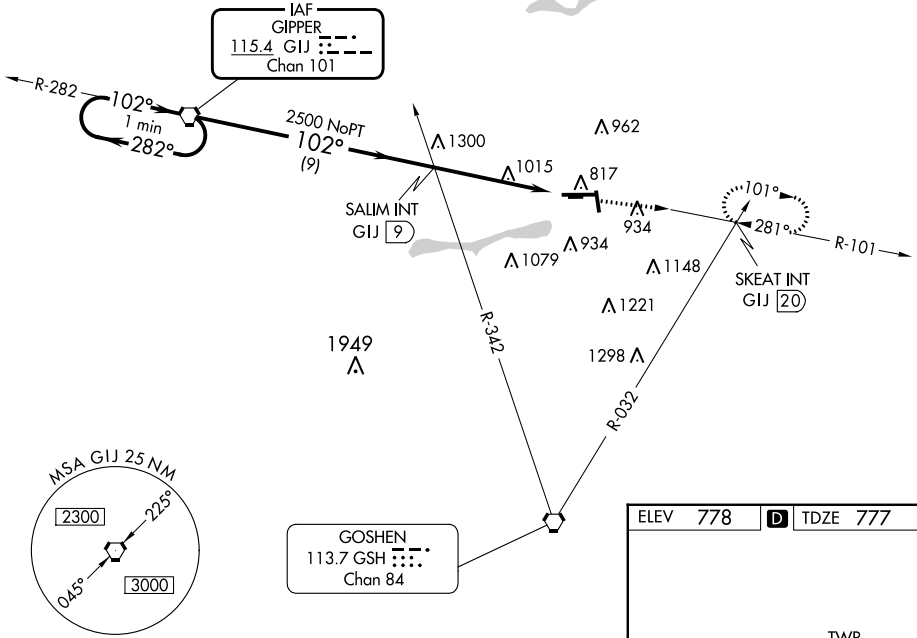
**VOR RWY 9**  
ELKHART MUNI (EKM)

⚠ Circling Rwy 36 NA at night. Circling NA to Rwy 8 and 26. Rwy 9 helicopter visibility reduction below 3/4 SM NA. When local altimeter setting not received, use South Bend altimeter setting and increase all MDA 40 feet. VDP NA when using South Bend altimeter setting.

MISSED APPROACH: Climb to 2500 via GJ R-101 to SKEAT INT/GJ 20 DME and hold.

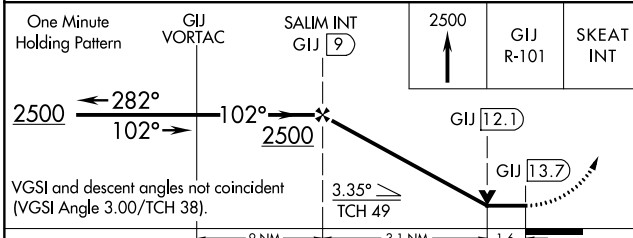
AWOS-3 <b>124.475</b>	SOUTH BEND APP CON ★ <b>118.55 257.8</b>	ELKHART TOWER ★ <b>119.5 (CTAF)</b> 0	GND CON <b>121.8</b>	CLNC DEL <b>121.8</b>	CLNC DEL <b>119.7</b> (When twr closed)	UNICOM <b>122.95</b>
--------------------------	---	--	-------------------------	--------------------------	---	-------------------------

NoPT for arrivals on GJ VORTAC  
airway radials 209 CW 310.



EC-2, 22 FEB 2024 to 21 MAR 2024

EC-2, 22 FEB 2024 to 21 MAR 2024



ELEV 778	D	TDZE 777
----------	---	----------

MIRL Rwy 18-36  
HIRL Rwy 9-27  
REIL Rwy 9, 18 and 36

FAF to MAP 4.7 NM

Knots	60	90	120	150	180
Min:Sec	4:42	3:08	2:21	1:53	1:34

CATEGORY	A	B	C	D
S-9	1340-1 563 (600-1)		1340-1½ 563 (600-1½)	1340-1¾ 563 (600-1¾)
CIRCLING	1340-1 562 (600-1)		1380-1¾ 602 (700-1¾)	1580-2½ 802 (900-2½)