

WAAS CH 86320 W22A	APP CRS 222°	Rwy Idg TDZE Apt Elev	5004 334 338
--	------------------------	-----------------------------	---

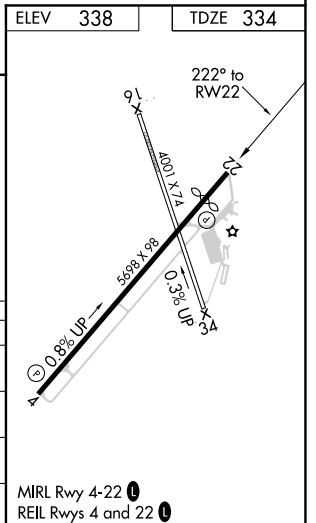
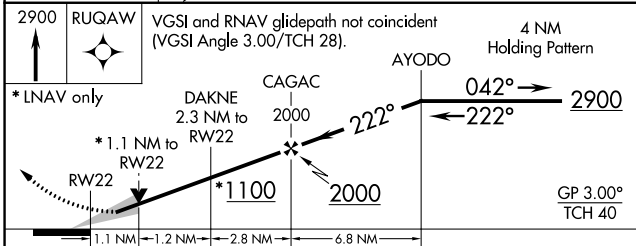
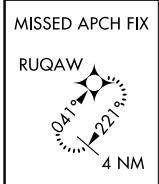
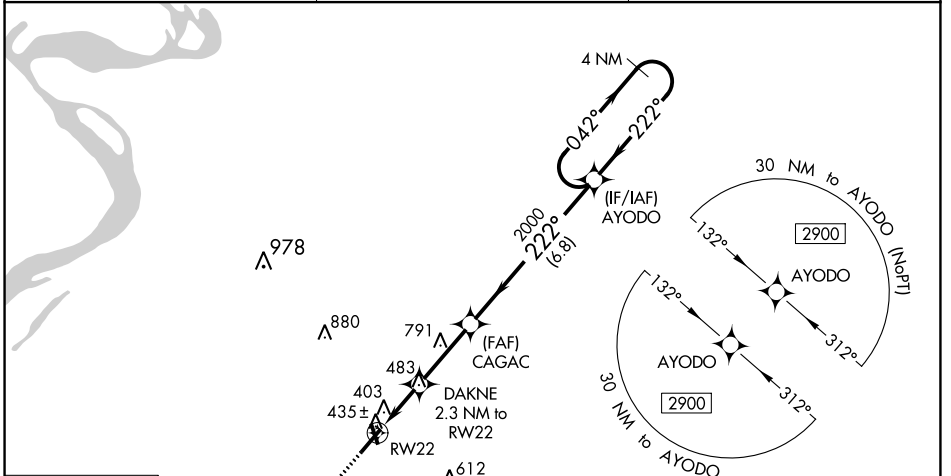
RNAV (GPS) RWY 22

DYERSBURG RGNL (DYR)

▼ For uncompensated Baro-VNAV systems, LNAV/VNAV NA below -1.5°C (5°F) or above 54°C (130°F).
▲ Baro-VNAV and VDP NA when using Blytheville Muni altimeter setting. DME/DME RNP-0.3 NA.
 When local altimeter setting not received, use Blytheville Muni altimeter setting: increase LPV DA to 644 feet, and LNAV/VNAV DA to 676 feet and all MDA 60 feet; increase LPV visibility all Cats 1/8 SM, and LNAV/VNAV visibility all Cats, LNAV Cats C/D visibility and Circling Cat C visibility 1/4 SM.
 Night landing: Rwy 16, 34 NA.

MISSED APPROACH:
 Climb to 2900 direct RUGAW and hold.

AWOS-3PT 135.625	MEMPHIS CENTER 134.65 316.15	UNICOM 123.05 (CTAF) 0
----------------------------	--	----------------------------------



CATEGORY	A	B	C	D
LPV DA		584-7/8	250 (300-7/8)	
LNAV/VNAV DA		616-7/8	282 (300-7/8)	
LNAV MDA		700-1	366 (400-1)	
CIRCLING	740-1 402 (500-1)	800-1 462 (500-1)	1040-2 702 (800-2)	1240-3 902 (1000-3)

MIRL Rwy 4-22 0
 REIL Rwys 4 and 22 0

SE-1, 17 JUN 2021 to 15 JUL 2021

SE-1, 17 JUN 2021 to 15 JUL 2021

WAAS CH 82320 W04A	APP CRS 041°	Rwy ldg 5698 TDZE 316 Apt Elev 338
--	------------------------	---

RNAV (GPS) RWY 4

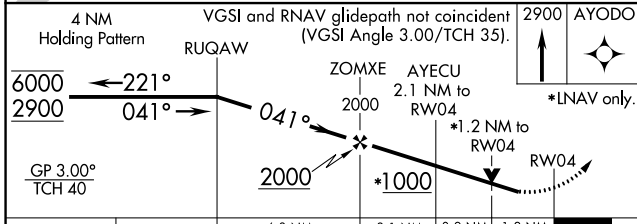
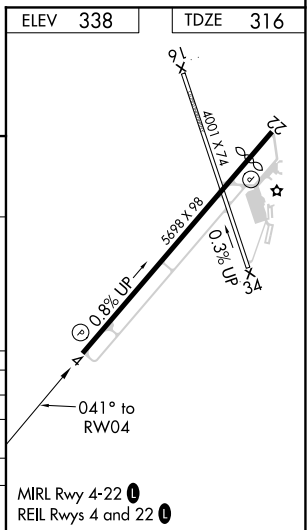
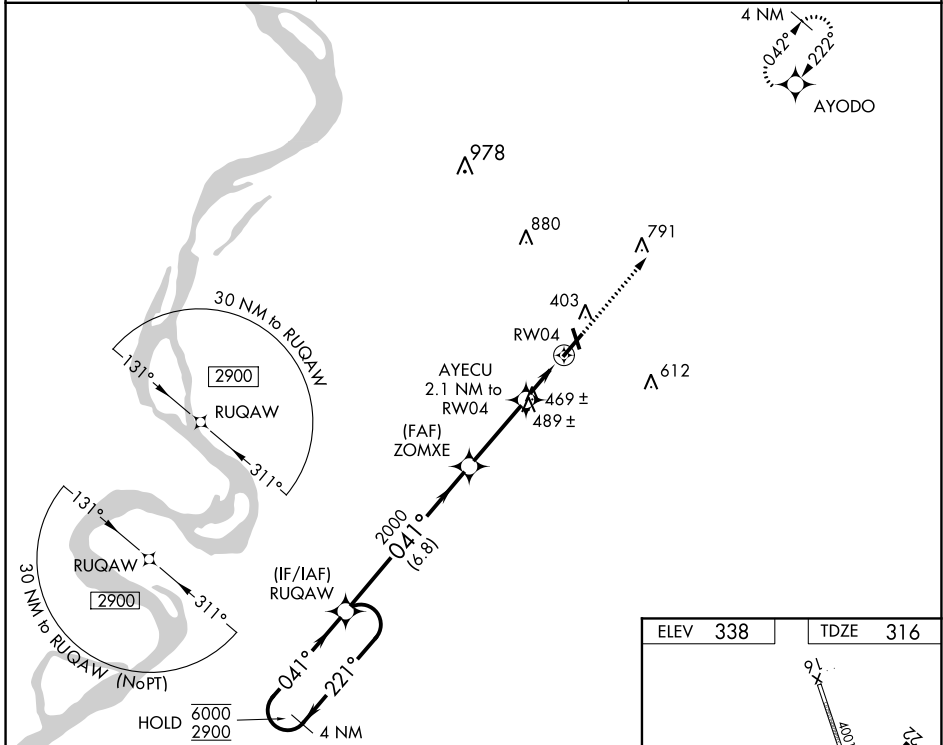
DYERSBURG RGNL (DYR)

RNP APCH.

▼ Circling to Rwy 16, 34 NA at night. Rwy 4 helicopter visibility reduction below 3/4 SM NA. For uncompensated Baro-VNAV systems, LNAV/VNAV NA below -15°C or above 54°C.

MISSED APPROACH: Climb to 2900 direct AYODO and hold.

AWOS-3PT 135.625	MEMPHIS CENTER 134.65 316.15	UNICOM 123.05 (CTAF) 0
----------------------------	--	----------------------------------



CATEGORY	A	B	C	D
LPV DA	588-1 272 (300-1)			
LNAV/VNAV DA	801-1 485 (500-1)			
LNAV MDA	720-1	404 (400-1)	720-1 404 (400-1)	
CIRCLING	740-1 402 (500-1)	800-1 462 (500-1)	1040-2 702 (800-2)	1240-3 902 (1000-3)

MIRL Rwy 4-22 0
REIL Rwys 4 and 22 0

SE-1, 17 JUN 2021 to 15 JUL 2021

SE-1, 17 JUN 2021 to 15 JUL 2021

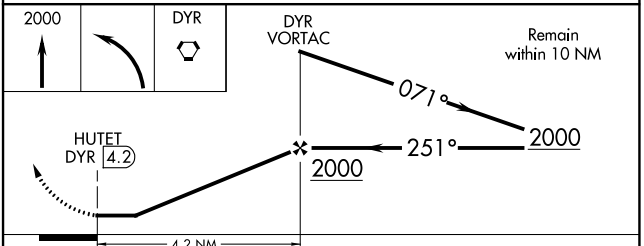
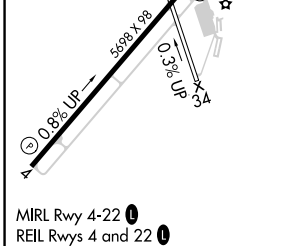
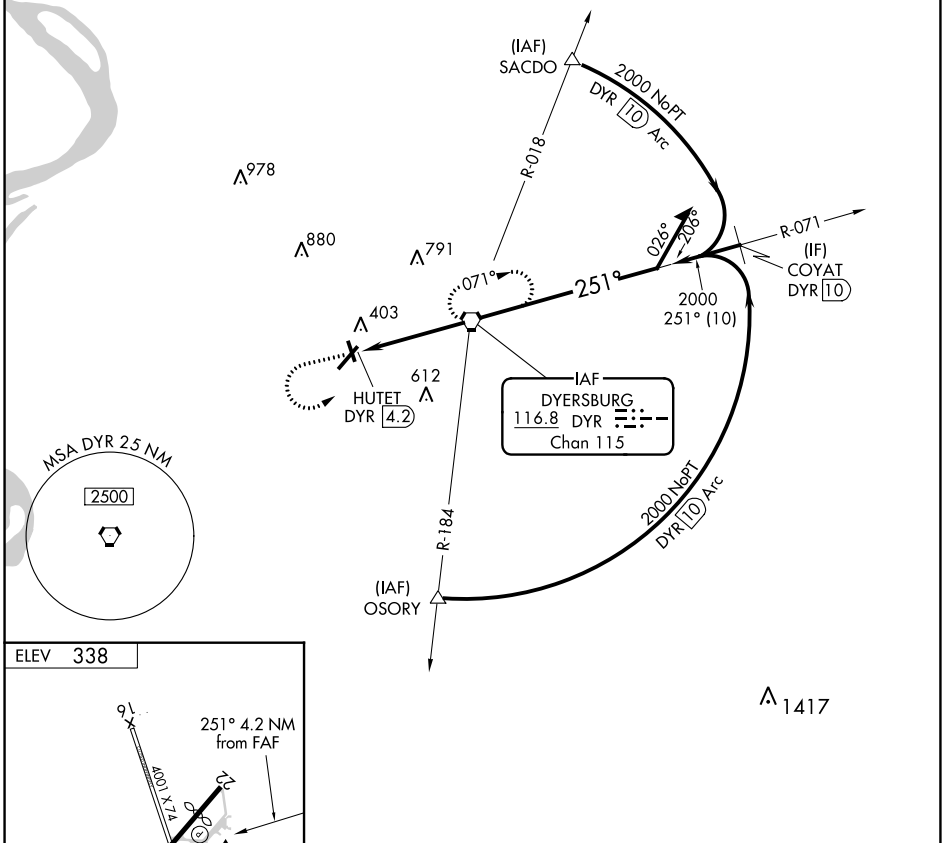
VORTAC DYR 116.8 Chan 115	APP CRS 251°	Rwy ldg TDZE Apt Elev 338	N/A N/A 338
---	------------------------	--	--

VOR-A
DYERSBURG RGNL (DYR)

⚠ When local altimeter setting not received, use Blytheville Muni altimeter setting and increase all MDA 60 feet; increase Circling Cat C visibility ¼ SM.
 ⚠ Night landing: Rwy 16, 34 NA. Helicopter visibility reduction below 1 SM NA.

MISSED APPROACH: Climb to 2000 then left turn direct DYR VORTAC and hold.

AWOS-3PT 135.625	MEMPHIS CENTER 134.65 316.15	UNICOM 123.05 (CTAF) 0
----------------------------	--	---



FAF to MAP 4.2 NM					
Knots	60	90	120	150	180
Min:Sec	4:12	2:48	2:06	1:41	1:24
CATEGORY	A	B	C	D	
CIRCLING	740-1 402 (500-1)	800-1 462 (500-1)	1040-2 702 (800-2)	1240-3 902 (1000-3)	

SE-1, 17 JUN 2021 to 15 JUL 2021

SE-1, 17 JUN 2021 to 15 JUL 2021