

(BNYRD6.BNYRD) 18144

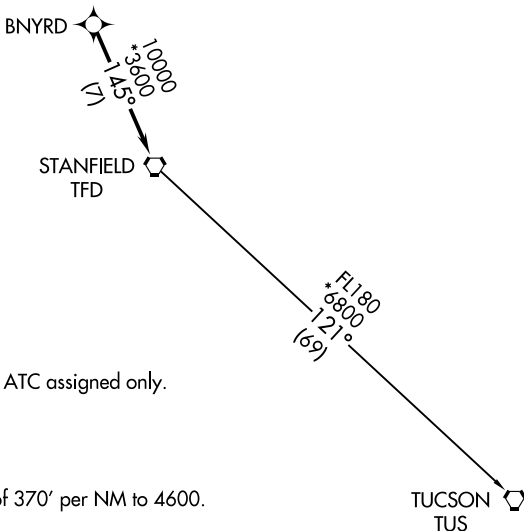
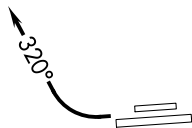
BNYRD SIX DEPARTURE (RNAV)

AL-6646 (FAA)

PHOENIX DEER VALLEY (DVT)
PHOENIX, ARIZONA

**TOP ALTITUDE:
ASSIGNED BY ATC**

ATIS	126.5
CLNC DEL	123.9
GND CON	121.8
DEER VALLEY TOWER*	118.4 (Rwy 7R-25L)
	120.2 (Rwy 7L-25R)
PHOENIX DEP CON	120.7 239.0



- NOTE: RNAV 1.
- NOTE: Turbojets and turboprops only.
- NOTE: RADAR required.
- NOTE: GPS required.
- NOTE: Aircraft departing KGEU and KGYR ATC assigned only.

TAKEOFF MINIMUMS

Rwys 7L/R: NA - Obstacles.
 Rwys 25L/R: Standard with minimum climb of 370' per NM to 4600.

NOTE: Chart not to scale.



DEPARTURE ROUTE DESCRIPTION

TAKEOFF RUNWAYS 25L/R: Climbing right turn heading 320° or as assigned by ATC, thence . . .
 . . . expect RADAR vectors to BNYRD, then on track 145° to TFD VORTAC, then on (transition), maintain ATC assigned altitude, expect filed altitude 3 minutes after departure.

TUCSON TRANSITION (BNYRD6.TUS)

BNYRD SIX DEPARTURE (RNAV)

(BNYRD6.BNYRD) 24MAY18

PHOENIX, ARIZONA
PHOENIX DEER VALLEY (DVT)

SW-4, 22 FEB 2024 to 21 MAR 2024

SW-4, 22 FEB 2024 to 21 MAR 2024

(FTHLS6.FTHLS) 24MAY18
FTHLS SIX DEPARTURE (RNAV)

ATIS
 126.5
 CLNC DEL
 123.9
 GND CON
 121.8
 DEER VALLEY TOWER*
 118.4 (Rwy 7R-25L)
 120.2 (Rwy 7L-25R)
 PHOENIX DEP CON
 120.7 239.0

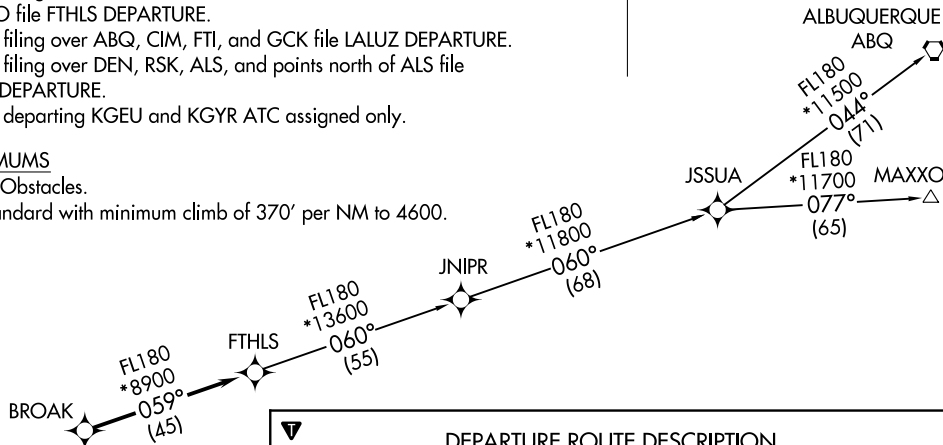
NOTE: RNAV 1.
 NOTE: Turbojets and turboprops only.
 NOTE: RADAR required.
 NOTE: GPS required.
 NOTE: ABQ transition ATC assigned only.
 NOTE: Aircraft filing over ACH, LBL, ONM, CNX, PNH, MMB, TCC, IRW and TXO file FTHLS DEPARTURE.
 NOTE: Aircraft filing over ABQ, CIM, FTI, and GCK file LALUZ DEPARTURE.
 NOTE: Aircraft filing over DEN, RSK, ALS, and points north of ALS file YOTES DEPARTURE.
 NOTE: Aircraft departing KGEU and KGYR ATC assigned only.

TAKEOFF MINIMUMS

Rwys 7L/R: NA-Obstacles.

Rwys 25L/R: Standard with minimum climb of 370' per NM to 4600.

**TOP ALTITUDE:
ASSIGNED BY ATC**



DEPARTURE ROUTE DESCRIPTION

TAKEOFF RUNWAYS 25L/R: Climbing right turn heading 320° or as assigned by ATC, thence. . . .
 . . . expect RADAR vectors to BROAK, then on track 059° to FTHLS, then on (transition). Maintain ATC assigned altitude, expect filed altitude 3 minutes after departure.

ALBUQUERQUE TRANSITION (FTHLS6.ABQ)
JNIPR TRANSITION (FTHLS6.JNIPR)
MAXXO TRANSITION (FTHLS6.MAXXO)

NOTE: Chart not to scale.

PHOENIX, ARIZONA
 PHOENIX DEER VALLEY (DVT)

(FTHLS6.FTHLS) 18144
FTHLS SIX DEPARTURE (RNAV)

AL-6646 (FAA)

PHOENIX DEER VALLEY (DVT)
 PHOENIX, ARIZONA

ZZZO EIGHT DEPARTURE (RNAV)
(IZZ08, IZZ0) 25ANZ4

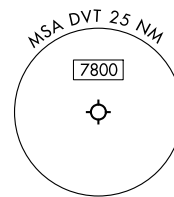
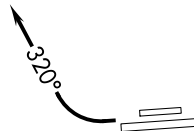
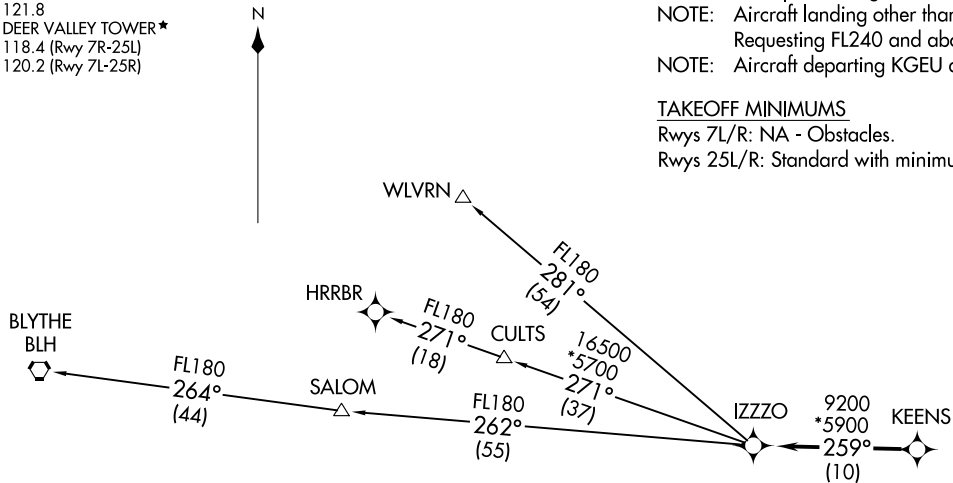
PHOENIX DEP CON
120.7 239.0
ATIS
126.5
CLNC DEL
123.9
GND CON
121.8
DEER VALLEY TOWER*
118.4 (Rwy 7R-25L)
120.2 (Rwy 7L-25R)

**TOP ALTITUDE:
ASSIGNED BY ATC**

RNAV 1 - GPS.
RADAR required.

NOTE: Turbojets and turboprops only.
NOTE: Aircraft requesting FL220 and below must file BLYTHE Transition.
NOTE: Turbojets landing LAX, file WLVRN Transition.
NOTE: Aircraft landing other than LAX and turboprops landing at LAX:
Requesting FL240 and above, file HRRBR Transition.
NOTE: Aircraft departing KGEU and KGYR ATC assigned only.

TAKEOFF MINIMUMS
Rwys 7L/R: NA - Obstacles.
Rwys 25L/R: Standard with minimum climb of 370'/NM to 4600.



DEPARTURE ROUTE DESCRIPTION

TAKEOFF RUNWAYS 25L/R: Climbing right turn heading 320° or as assigned by ATC, thence. . . .
. . . .for RADAR vectors to KEENS, then on track 259° to IZZO, then on (transition).
Maintain ATC assigned altitude, expect filed altitude 3 minutes after departure.

- BLYTHE TRANSITION (IZZ08.BLH)
- HRRBR TRANSITION (IZZ08.HRRBR)
- WLVRN TRANSITION (IZZ08.WLVRN)

NOTE: Chart not to scale.

PHOENIX, ARIZONA
DEER VALLEY (DVT)
PHOENIX DEER VALLEY (DVT)

ZZZO EIGHT DEPARTURE (RNAV)
(IZZ08, IZZ0) 24025

AL-6646 (FAA)

PHOENIX DEER VALLEY (DVT)
PHOENIX, ARIZONA

JUDTH SEVEN DEPARTURE (RNAV)
(JUDTH7.JUDTH) 24MAY18

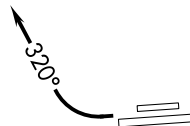
ATIS
126.5
CLNC DEL
123.9
GND CON
121.8
DEER VALLEY TOWER ★
118.4 (Rwy 7R-25L)
120.2 (Rwy 7L-25R)
PHOENIX DEP CON
120.7 239.0

**TOP ALTITUDE:
ASSIGNED BY ATC**

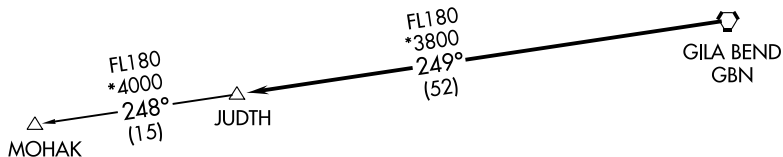
TAKEOFF MINIMUMS

Rwys 7L/R: NA - Obstacles.
Rwys 25L/R: Standard with minimum climb of 370' per NM to 4600.

- NOTE: RNAV 1.
- NOTE: Turbojets and turboprops only.
- NOTE: RADAR required.
- NOTE: GPS required.
- NOTE: Aircraft departing KGEU and KGYR ATC assigned only.



NOTE: Chart not to scale.



DEPARTURE ROUTE DESCRIPTION

TAKEOFF RUNWAYS 25L/R: Climbing right turn heading 320° or as assigned by ATC, thence. . . .

. . . .expect RADAR vectors to GBN VORTAC, then on track 249° to JUDTH, then on (transition). Maintain ATC assigned altitude, expect filed altitude 3 minutes after departure.

MOHAK TRANSITION (JUDTH7.MOHAK)

PHOENIX, ARIZONA
PHOENIX DEER VALLEY (DVT)
AL-6646 (FAA)

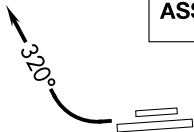
(JUDTH7.JUDTH) 181.44
JUDTH SEVEN DEPARTURE (RNAV)

PHOENIX DEER VALLEY (DVT)
PHOENIX, ARIZONA

KATMN SIX DEPARTURE (RNAV)
(KATMN6.KATMN) 24MAY18

PHOENIX, ARIZONA
PHOENIX DEER VALLEY (DVT)

**TOP ALTITUDE:
ASSIGNED BY ATC**



DEPARTURE ROUTE DESCRIPTION

TAKEOFF RUNWAYS 25L/R: Climbing right turn heading 320° or as assigned by ATC, thence. . . .

. . . .on RADAR vectors to ECLPS, then on track 111° to KATMN, then on (transition). Maintain ATC assigned altitude, expect filed altitude 3 minutes after departure.

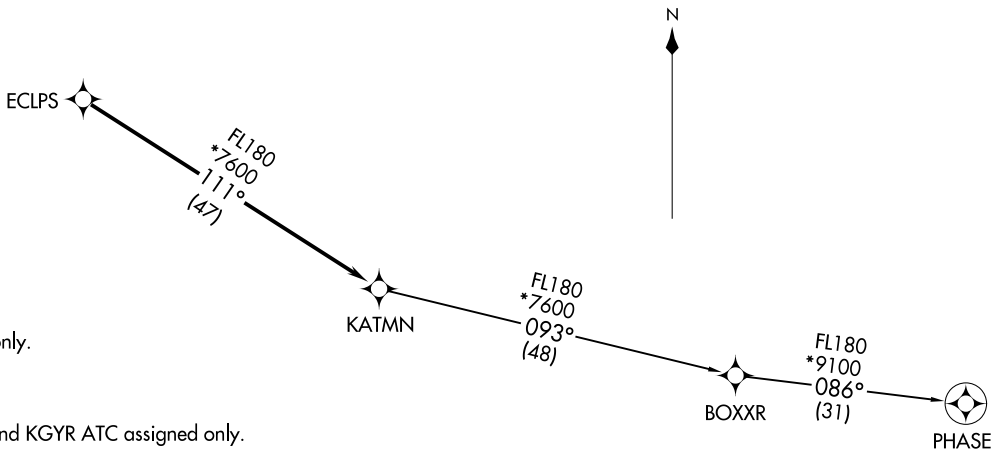
PHASE TRANSITION (KATMN6.PHASE)

ATIS 126.5
CLNC DEL 123.9
GND CON 121.8
DEER VALLEY TOWER ★ 118.4 (Rwy 7R-25L)
120.2 (Rwy 7L-25R)
PHOENIX DEP CON 120.7 239.0

(KATMN6.KATMN) 181/44
KATMN SIX DEPARTURE (RNAV)

A-6646 (FAA)

PHOENIX DEER VALLEY (DVT)
PHOENIX, ARIZONA



- NOTE: RNAV 1.
- NOTE: Turbojets and turboprops only.
- NOTE: RADAR required.
- NOTE: GPS required.
- NOTE: Aircraft departing KGEU and KGYR ATC assigned only.

TAKEOFF MINIMUMS

- Rwys 7L/R: NA-obstacles.
- Rwys 25L/R: Standard with minimum climb of 370' per NM to 4600.

NOTE: Chart not to scale.

LALUZ SIX DEPARTURE (RNAV)
 (LALUZ6.LALUZ) 24MAR18

PHOENIX, ARIZONA
 PHOENIX DEER VALLEY (DVT)

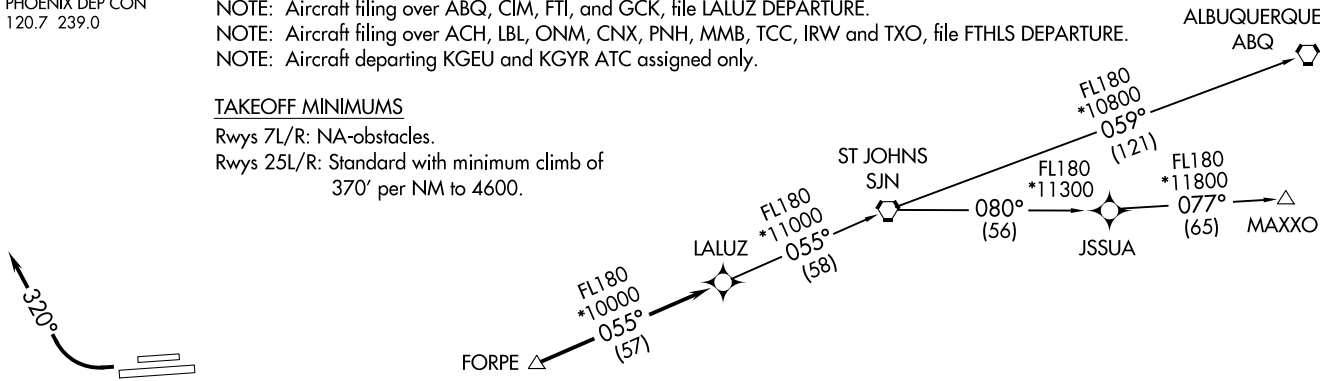
ATIS
 126.5
 CLNC DEL
 123.9
 GND CON
 121.8
 DEER VALLEY TOWER*
 118.4 (Rwy 7R-25L)
 120.2 (Rwy 7L-25R)
 PHOENIX DEP CON
 120.7 239.0

NOTE: RNAV 1.
 NOTE: Turbojets and turboprops only.
 NOTE: RADAR required.
 NOTE: GPS required.
 NOTE: SJN TRANSITION for ABQ terminal arrivals only.
 NOTE: MAXXO TRANSITION ATC assigned only.
 NOTE: Aircraft filing over DEN, RSK, ALS, and points north of ALS, file YOTES DEPARTURE.
 NOTE: Aircraft filing over ABQ, CIM, FTI, and GCK, file LALUZ DEPARTURE.
 NOTE: Aircraft filing over ACH, LBL, ONM, CNX, PNH, MMB, TCC, IRW and TXO, file FTHLS DEPARTURE.
 NOTE: Aircraft departing KGEU and KGYR ATC assigned only.

TAKEOFF MINIMUMS

Rwys 7L/R: NA-obstacles.
 Rwys 25L/R: Standard with minimum climb of
 370' per NM to 4600.

**TOP ALTITUDE:
 ASSIGNED BY ATC**



DEPARTURE ROUTE DESCRIPTION

TAKEOFF RUNWAYS 25L/R: Climbing right turn heading 320° or as assigned by ATC, thence. . . .

. . . .expect RADAR vectors to FORPE, then on track 055° to LALUZ, then on (transition). Maintain ATC assigned altitude, expect filed altitude 3 minutes after departure.

ALBUQUERQUE TRANSITION (LALUZ6.ABQ)

MAXXO TRANSITION (LALUZ6.MAXXO)

ST JOHNS TRANSITION (LALUZ6.SJN)

NOTE: Chart not to scale.



(LALUZ6.LALUZ) 181144
 LALUZ SIX DEPARTURE (RNAV)

A-6646 (FAA)

PHOENIX DEER VALLEY (DVT)
 PHOENIX, ARIZONA

(MAYSA7.MAYSA) 20142

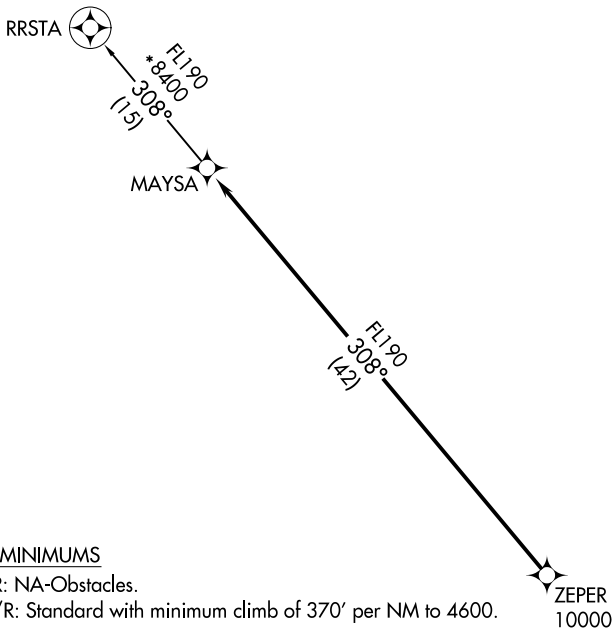
MAYSA SEVEN DEPARTURE (RNAV)

AL-6646 (FAA)

PHOENIX DEER VALLEY (DVT)
PHOENIX, ARIZONA

**TOP ALTITUDE:
ASSIGNED BY ATC**

ATIS	126.5
CLNC DEL	123.9
GND CON	121.8
DEER VALLEY TOWER*	118.4 (Rwy 7R-25L)
	120.2 (Rwy 7L-25R)
PHOENIX DEP CON	120.7 239.0



TAKEOFF MINIMUMS

Rwys 7L/R: NA-Obstacles.

Rwys 25L/R: Standard with minimum climb of 370' per NM to 4600.

NOTE: RNAV 1.

NOTE: Turbojets and turboprops only.

NOTE: RADAR required.

NOTE: GPS required.

NOTE: Aircraft departing KGEU and KGYR ATC assigned only.

Do not file.

NOTE: Chart not to scale.



DEPARTURE ROUTE DESCRIPTION

TAKEOFF RUNWAYS 25L/R: Climbing right turn heading 320° or as assigned by ATC, thence. . . .

. . . .expect RADAR vectors to cross ZEPER at or above 10000, then on track 308° to MAYSA, then on RRSTA TRANSITION. Maintain ATC assigned altitude, expect filed altitude 3 minutes after departure.

RRSTA TRANSITION (MAYSA7.RRSTA)

MAYSA SEVEN DEPARTURE (RNAV)

(MAYSA7.MAYSA) 21MAY20

PHOENIX, ARIZONA
PHOENIX DEER VALLEY (DVT)

SW-4, 22 FEB 2024 to 21 MAR 2024

SW-4, 22 FEB 2024 to 21 MAR 2024

GRAND CANYON
GCN

FL180
*9500
342°
(26)

RIMMM

FL180
*11500
343°
(10)

LOFTS

FL180
*11500
343°
(36)

CARTL

FL180
*9300
343°
(20)

SNOBL

FL180
*8100
343°
(20)

QUAKY

**TOP ALTITUDE:
ASSIGNED BY ATC**

ATIS
126.5
CLNC DEL
123.9
GND CON
121.8
DEER VALLEY TOWER*
118.4 (DEP Rwy 7R-25L)
120.2 (DEP Rwy 7L-25R)
PHOENIX DEP CON
120.7 239.0

YOOPR

FL180
*10700
043°
(94)

FL180
*10700
050°
(123)

JARPA

- NOTE: RNAV 1.
- NOTE: Turbojets and turboprops only.
- NOTE: RADAR required.
- NOTE: GPS required.
- NOTE: JARPA TRANSITION ATC assigned only.
- NOTE: YOOPR TRANSITION ATC assigned only.
- NOTE: CARTL TRANSITION for FLG or PGA terminal arrivals only.
- NOTE: Aircraft departing from KGEU and KGYR ATC assigned only.

TAKEOFF MINIMUMS

Rwys 7L/R: NA-obstacles.
Rwys 25L/R: Standard with minimum climb of 370' per NM to 4600.

DEPARTURE ROUTE DESCRIPTION

TAKEOFF RUNWAYS 25L/R: Climbing right turn heading 320° or as assigned by ATC, thence. . . .

. . . . expect RADAR vectors to QUAKY, then on track 343° to SNOBL, then on (transition). Maintain ATC assigned altitude, expect filed altitude 3 minutes after departure.

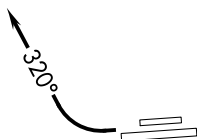
CARTL TRANSITION (SNOBL6.CARTL)

GRAND CANYON TRANSITION (SNOBL6.GCN)

JARPA TRANSITION (SNOBL6.JARPA)

RIMMM TRANSITION (SNOBL6.RIMMM)

YOOPR TRANSITION (SNOBL6.YOOPR)



NOTE: Chart not to scale.

SW-4, 22 FEB 2024 to 21 MAR 2024

SW-4, 22 FEB 2024 to 21 MAR 2024

(YOTES6.YOTES) 18144

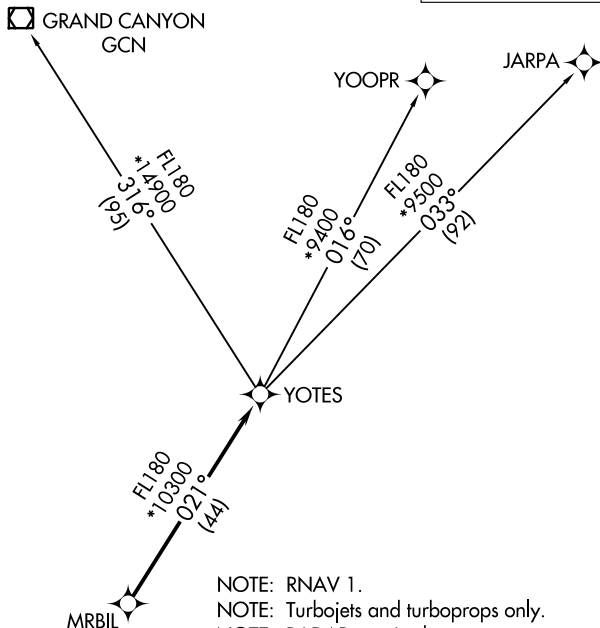
YOTES SIX DEPARTURE (RNAV)

AL-6646 (FAA)

PHOENIX DEER VALLEY (DVT)
PHOENIX, ARIZONA

ATIS
126.5
CLNC DEL
123.9
GND CON
121.8
DEER VALLEY TOWER ★
118.4 (Rwy 7R-25L)
120.2 (Rwy 7L-25R)
PHOENIX DEP CON
120.7 239.0

**TOP ALTITUDE:
ASSIGNED BY ATC**



- NOTE: RNAV 1.
- NOTE: Turbojets and turboprops only.
- NOTE: RADAR required.
- NOTE: GPS required.
- NOTE: GCN TRANSITION ATC assigned only.
- NOTE: Aircraft departing KGEU and KGYR ATC assigned only.

TAKEOFF MINIMUMS

Rwys 7L/R: NA-obstacles.
Rwys 25L/R: Standard with minimum climb of 370' per NM to 4600.

NOTE: Chart not to scale.

DEPARTURE ROUTE DESCRIPTION

TAKEOFF RUNWAYS 25L/R: Climbing right turn heading 320° or as assigned by ATC, thence. . . .

. . . .expect RADAR vectors to MRBIL, then on track 021° to YOTES, then on (transition). Maintain ATC assigned altitude, expect filed altitude 3 minutes after departure.

GRAND CANYON TRANSITION (YOTES6.GCN)

JARPA TRANSITION (YOTES6.JARPA)

YOOPR TRANSITION (YOTES6.YOOPR)

YOTES SIX DEPARTURE (RNAV)

(YOTES6.YOTES) 24MAY18

PHOENIX, ARIZONA
PHOENIX DEER VALLEY (DVT)

SW-4, 22 FEB 2024 to 21 MAR 2024

SW-4, 22 FEB 2024 to 21 MAR 2024