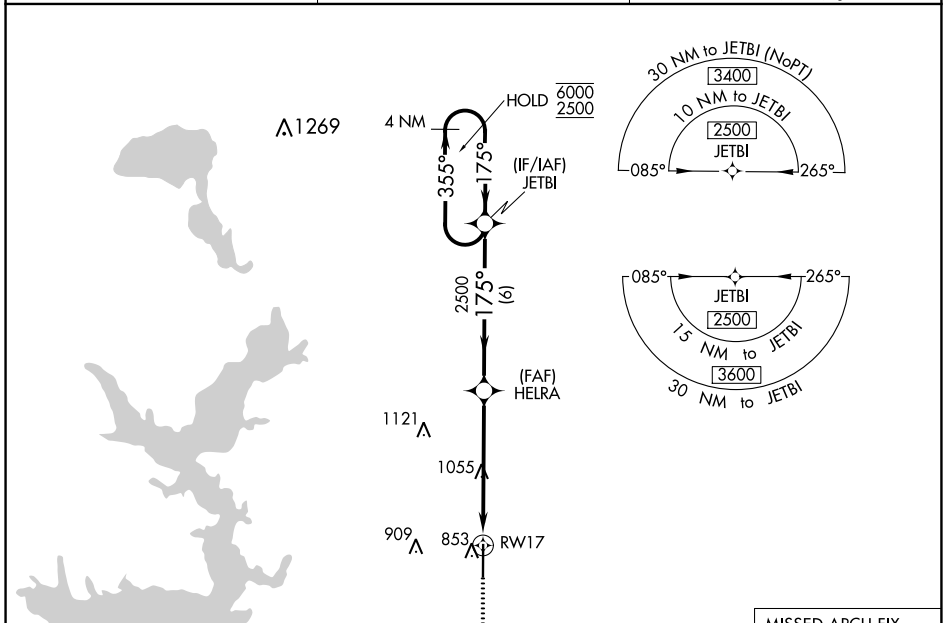


WAAS CH <b>99518</b> <b>W17A</b>	APP CRS <b>175°</b>	Rwy Idg TDZE <b>699</b> Apt Elev <b>699</b>
--	------------------------	---

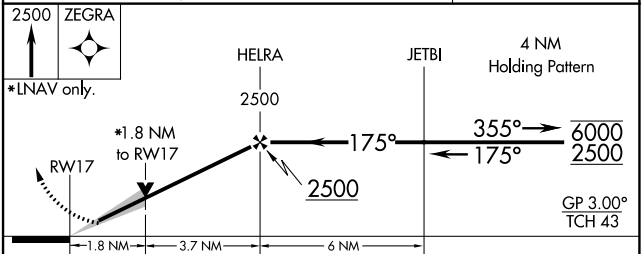
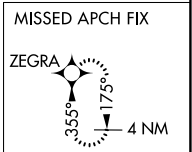
# RNAV (GPS) RWY 17

DURANT RGNL - EAKER FIELD (DUA)

RNP APCH.		ODALS	MISSED APPROACH: Climb to 2500 direct ZEGRA and hold.
<p><b>⚠</b> Inop table does not apply to LPV and LNAV Cat C. For uncompensated Baro-VNAV systems, LNAV/VNAV NA below -16°C or above 54°C. For inop ALS, increase LNAV/VNAV Cat A/B visibility to 1 ¼ SM.</p>			
AWOS-3 <b>124.175</b>	FORT WORTH CENTER <b>124.75 323.0</b>	UNICOM <b>122.8 (CTAF) 0</b>	



ELEV <b>699</b>	TDZE <b>699</b>
<p>175° to RWY 17</p> <p>Z1</p> <p>001 X 0089</p> <p>35</p>	



CATEGORY	A	B	C	D
LPV DA		899-3/4	200 (200-3/4)	NA
LNAV/VNAV DA		1133-1 1/8	434 (500-1 1/8)	NA
LNAV MDA	1320-3/4	621 (700-3/4)	1320-1 3/4	621 (700-1 3/4)

SC-1, 22 APR 2021 to 20 MAY 2021

SC-1, 22 APR 2021 to 20 MAY 2021

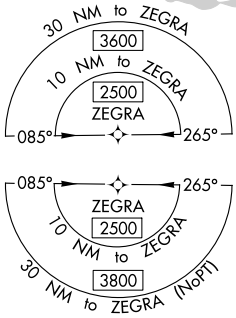
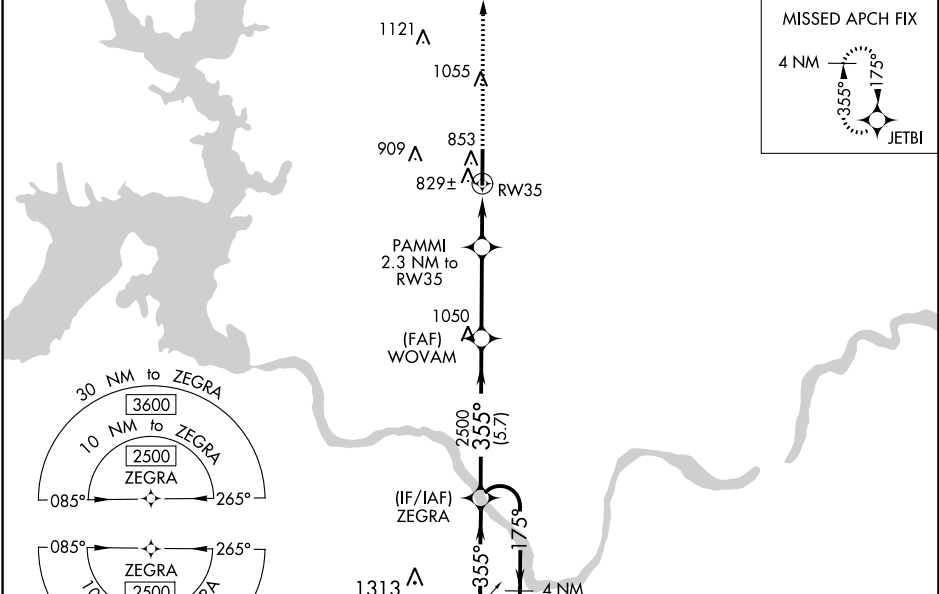
WAAS CH <b>48918</b> <b>W35A</b>	APP CRS <b>355°</b>	Rwy Idg TDZE Apt Elev	<b>6800</b> <b>694</b> <b>699</b>
--	------------------------	-----------------------------	---

# RNAV (GPS) RWY 35

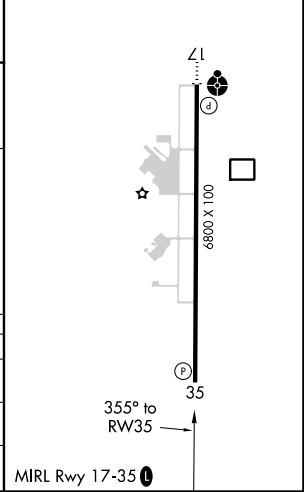
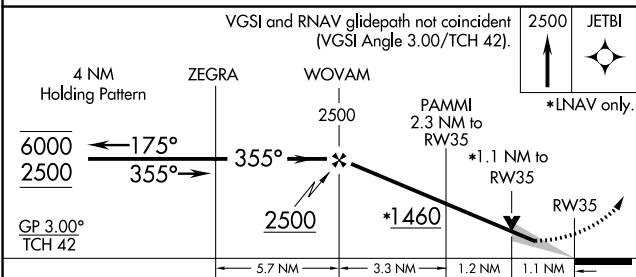
DURANT RGNL - EAKER FIELD (DUA)

RNP APCH.	MISSED APPROACH: Climb to 2500 direct JETBI and hold.
<p>For uncompensated Baro-VNAV systems, LNAV/VNAV NA below -16°C or above 54°C.</p>	

AWOS-3 <b>124.175</b>	FORT WORTH CENTER <b>124.75 323.0</b>	UNICOM <b>122.8 (CTAF) 0</b>
--------------------------	--	---------------------------------



ELEV 699	TDZE 694
----------	----------



CATEGORY	A	B	C	D
LPV DA	894-3/4	200 (200-3/4)		NA
LNAV/VNAV DA	1086-1 1/8	392 (400-1 1/8)		NA
LNAV MDA	1080-1	386 (400-1)	1080-1 1/8 386 (400-1 1/8)	NA

SC-1, 22 APR 2021 to 20 MAY 2021

SC-1, 22 APR 2021 to 20 MAY 2021