



DEPARTURE ROUTE DESCRIPTION

NOTE: See additional requirements in RNAV departure AAUP.

TAKEOFF RWY 3L: Climb on heading 036° to intercept course 070° to cross BESST at or above 2500 and at or below 230K, then on track 128° to cross SWNDL at or below 7000, then on track 212° to WERKN, then on track 232° to cross HUUTZ at or above 4000, thence....

TAKEOFF RWY 3R: Climb on heading 036° to intercept course 064° to cross BESST at or above 2500 and at or below 230K, then on track 128° to cross SWNDL at or below 7000, then on track 212° to WERKN, then on track 232° to cross HUUTZ at or above 4000, thence....

TAKEOFF RWY 4L: Climb on heading 036° to intercept course 347° to cross NITRN at or above 2500 and at or below 230K, then on track 304° to cross FERRM at or below 6000, then on track 259° to cross AVERL at or below 7000, then on track 199° to OGEEZ, then on track 173° to cross HUUTZ at or above 4000, thence....

TAKEOFF RWY 4R: Climb on heading 036° to intercept course 339° to cross NITRN at or above 2500 and at or below 230K, then on track 304° to cross FERRM at or below 6000, then on track 259° to cross AVERL at or below 7000, then on track 199° to OGEEZ, then on track 173° to cross HUUTZ at or above 4000, thence....

TAKEOFF RWY 21L: Climb on heading 216° to intercept course 204° to SERGY, then on track 201° to cross FDROV at or below 7000, then on track 210° to cross HUUTZ at or above 4000, thence....

TAKEOFF RWY 21R: Climb on heading 216° to intercept course 203° to SERGY, then on track 201° to cross FDROV at or below 7000, then on track 210° to cross HUUTZ at or above 4000, thence....

TAKEOFF RWY 22L: Climb on heading 216° to 1146, then direct BOOSE, then on track 226° to cross RATIO at or below 7000, then on track 189° to cross HUUTZ at or above 4000, thence....

TAKEOFF RWY 22R: Climb on heading 216° to 1146, then direct EEERI, then on track 224° to cross RATIO at or below 7000, then on track 189° to cross HUUTZ at or above 4000, thence....

TAKEOFF RWY 27L/R: Climb on heading 276° to 1146, then on heading 276° or as assigned for RADAR vectors to cross HUUTZ at or above 4000, thence....

....on track 213° to BARI, then on (transition). Maintain 17000 or as assigned by ATC, expect filed altitude 10 minutes after departure.

SINKR TRANSITION (BARI2.SINKR):

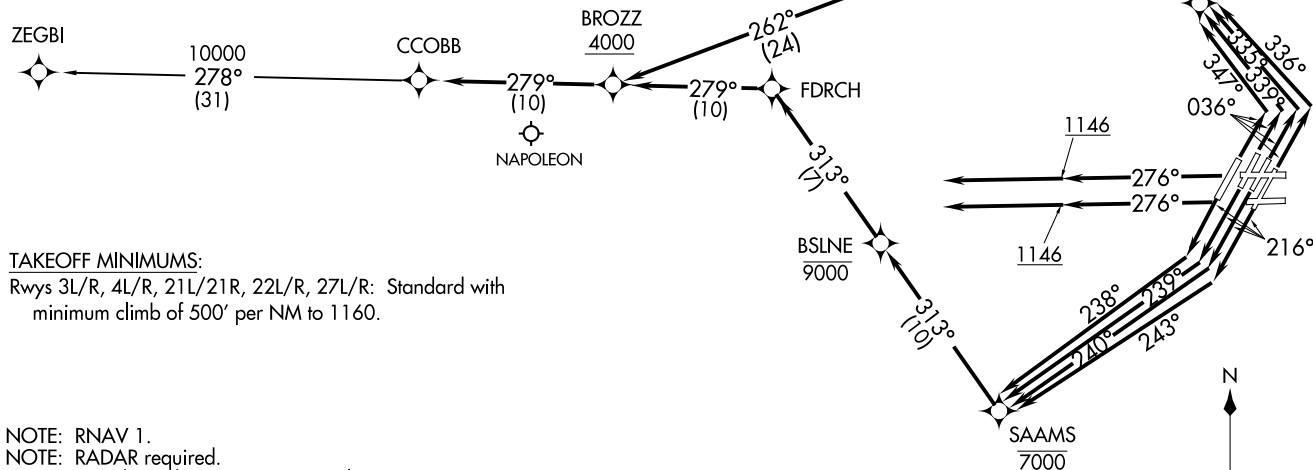
EC-1, 22 FEB 2024 to 21 MAR 2024

EC-1, 22 FEB 2024 to 21 MAR 2024

CCOB TWO DEPARTURE (RNAV)
(CCOBB2.CCOBB) 15AUG19

DETROIT METRO WAYNE COUNTY (DTW)
DETROIT, MICHIGAN

D-ATIS 118.125
CLNC DEL 120.65
CPDLC
GND CON
121.8 (NW) 119.45 (NE)
132.725 (SW) 119.25 (SE)
METRO TOWER
118.4 317.725 (Rwys 3L/R, 21L/R, 27R)
128.75 317.725 (Rwy 27L)
135.0 317.725 (Rwy 4L/R, 22L/R)
DETROIT DEP CON
125.525 284.0 (Rwy 3L/R, 4L/R, 21L/R, 22L/R)
132.025 284.0 (Rwy 27L/R)



TAKEOFF MINIMUMS:

Rwys 3L/R, 4L/R, 21L/21R, 22L/R, 27L/R: Standard with minimum climb of 500' per NM to 1160.

- NOTE: RNAV 1.
- NOTE: RADAR required.
- NOTE: DME/DME/IRU or GPS required.
- NOTE: Turbojet departures at/above 10000, maintain 280K until advised by ATC.
- NOTE: For use by aircraft filed at or below FL220, or as assigned by ATC.
- NOTE: CAUTION: Parachute jumping 6 NM SW of BROZZ, 3 NM radius of Napoleon Airport (3NP) at or below 17999 (SR-SS).
- NOTE: If unable to accept 500' per NM climb rate, advise clearance delivery on initial contact.

NOTE: Chart not to scale.

(NARRATIVE ON FOLLOWING PAGE)

EC-1, 22 FEB 2024 to 21 MAR 2024

TOP ALTITUDE:
17000

(CCOBB2.CCOBB) 21112
CCOBB TWO DEPARTURE (RNAV)
AL:119 (FAA)

DETROIT METRO WAYNE COUNTY (DTW)
DETROIT, MICHIGAN



DEPARTURE ROUTE DESCRIPTION

NOTE: See additional requirements in RNAV departure AAUP.

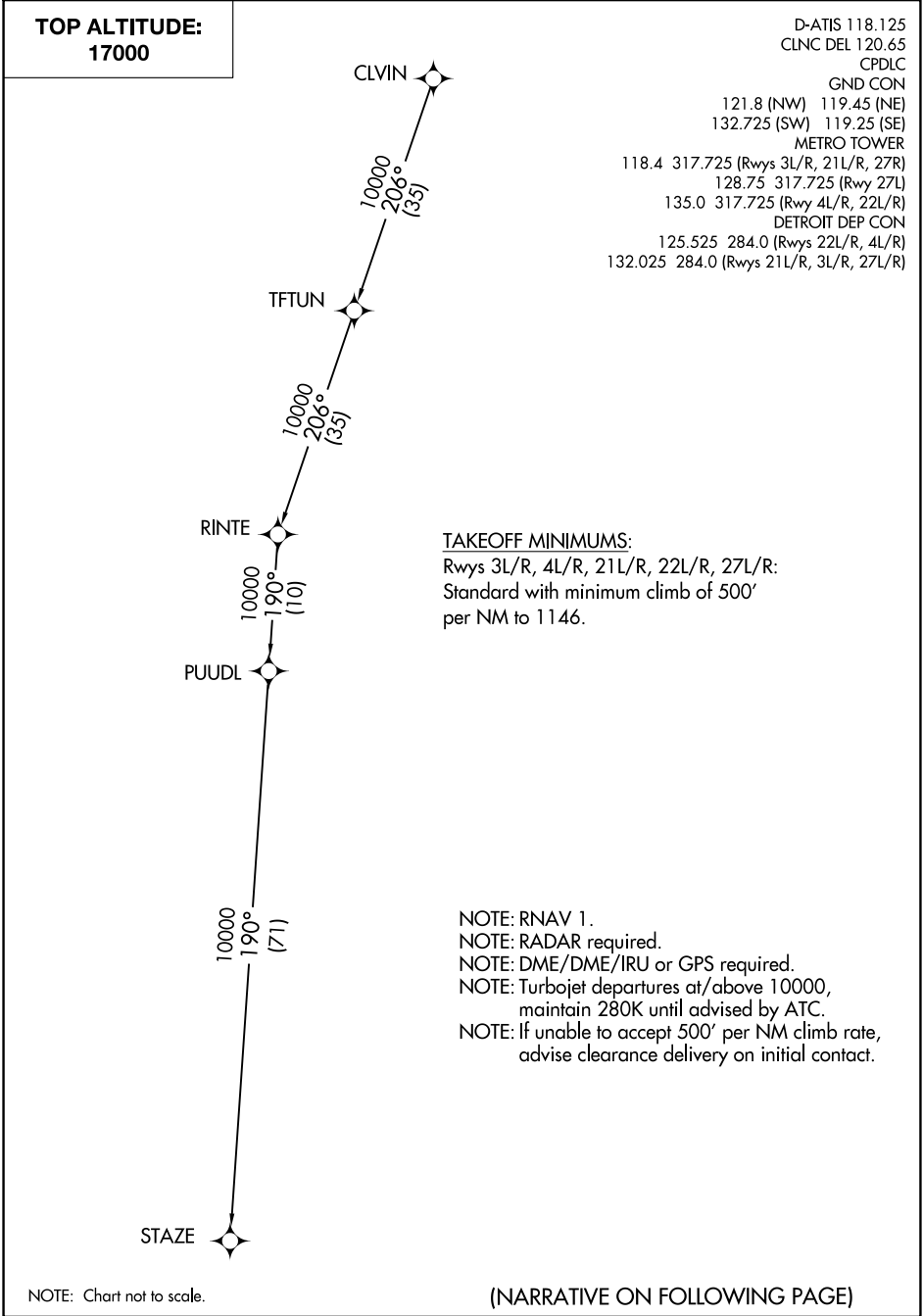
- TAKEOFF RUNWAY 3L: Climb on heading 036° to intercept course 335° to cross NITRN at or above 2500 and at or below 230K, then on track 304° to cross FERRM at or below 6000, then on track 259° to cross AVERL at or below 7000, then on track 262° to cross BROZZ at or above 4000, thence....
- TAKEOFF RUNWAY 3R: Climb on heading 036° to intercept course 336° to cross NITRN at or above 2500 and at or below 230K, then on track 304° to cross FERRM at or below 6000, then on track 259° to cross AVERL at or below 7000, then on track 262° to cross BROZZ at or above 4000, thence....
- TAKEOFF RUNWAY 4L: Climb on heading 036° to intercept course 347° to cross NITRN at or above 2500 and at or below 230K, then on track 304° to cross FERRM at or below 6000, then on track 259° to cross AVERL at or below 7000, then on track 262° to cross BROZZ at or above 4000, thence....
- TAKEOFF RUNWAY 4R: Climb on heading 036° to intercept course 339° to cross NITRN at or above 2500 and at or below 230K, then on track 304° to cross FERRM at or below 6000, then on track 259° to cross AVERL at or below 7000, then on track 262° to cross BROZZ at or above 4000, thence....
- TAKEOFF RUNWAY 21L: Climb heading 216° to intercept course 243° to cross SAAMS at or below 7000, then on track 313° to cross BSLNE at or below 9000, then on track 313° to FDRCH, then on track 279° to cross BROZZ at or above 4000, thence....
- TAKEOFF RUNWAY 21R: Climb on heading 216° to intercept course 240° to cross SAAMS at or below 7000, then on track 313° to cross BSLNE at or below 9000, then on track 313° to FDRCH, then on track 279° to cross BROZZ at or above 4000, thence....
- TAKEOFF RUNWAY 22L: Climb on heading 216° to intercept course 239° to cross SAAMS at or below 7000, then on track 313° to cross BSLNE at or below 9000, then on track 313° to FDRCH, then on track 279° to cross BROZZ at or above 4000, thence....
- TAKEOFF RUNWAY 22R: Climb on heading 216° to intercept course 238° to cross SAAMS at or below 7000, then on track 313° to cross BSLNE at or below 9000, then on track 313° to FDRCH, then on track 279° to cross BROZZ at or above 4000, thence....
- TAKEOFF RUNWAYS 27L/27R: Climb on heading 276° to 1146, then on heading 276° or as assigned for RADAR vectors to cross BROZZ at or above 4000, thence....

....on track 279° to CCOBB, then on (transition). Maintain 17000 or as assigned by ATC, expect filed altitude within 10 minutes after departure.

ZEGBI TRANSITION (CCOBB2.ZEGBI):

EC-1, 22 FEB 2024 to 21 MAR 2024

EC-1, 22 FEB 2024 to 21 MAR 2024





DEPARTURE ROUTE DESCRIPTION

SEE ADDITIONAL REQUIREMENTS IN RNAV DEPARTURE AAUP.

TAKEOFF RUNWAY 3L: Climb on heading 036° to intercept course 070° to cross BESST at or above 2500 and at or below 230K, then on track 128° to cross SWINDL at or below 7000, then on track 212° to WERKN, then on track 215° to cross PHAUL at or above 4000, thence....

TAKEOFF RUNWAY 3R: Climb on heading 036° to intercept course 064° to cross BESST at or above 2500 and at or below 230K, then on track 128° to cross SWINDL at or below 7000, then on track 212° to WERKN, then on track 215° to cross PHAUL at or above 4000, thence....

TAKEOFF RUNWAY 4L: Climb on heading 036° to intercept course 347° to cross NITRN at or above 2500 and at or below 230K, then on track 304° to cross FERRM at or below 6000, then on track 259° to cross AVERL at or below 7000, then on track 199° to OGEEZ, then on track 155° to cross PHAUL at or above 4000, thence....

TAKEOFF RUNWAY 4R: Climb on heading 036° to intercept course 339° to cross NITRN at or above 2500 and at or below 230K, then on track 304° to cross FERRM at or below 6000, then on track 259° to cross AVERL at or below 7000, then on track 199° to OGEEZ, then on track 155° to cross PHAUL at or above 4000, thence....

TAKEOFF RUNWAY 21L: Climb on heading 216° to intercept course 204° to SERGY, then on track 201° to cross FDROV at or below 7000, then on track 181° to cross PHAUL at or above 4000, thence....

TAKEOFF RUNWAY 21R: Climb on heading 216° to intercept course 203° to SERGY, then on track 201° to cross FDROV at or below 7000, then on track 181° to cross PHAUL at or above 4000, thence....

TAKEOFF RUNWAY 22L: Climb on heading 216° to 1146, then direct BOOSE, then on track 226° to cross RATIO at or below 7000, then on track 165° to cross PHAUL at or above 4000, thence....

TAKEOFF RUNWAY 22R: Climb on heading 216° to 1146, then direct EEERI, then on track 224° to cross RATIO at or below 7000, then on track 165° to cross PHAUL at or above 4000, thence....

TAKEOFF RUNWAYS 27L/27R: Climb on heading 276° to 1146, then on heading 276° or as assigned for RADAR vectors to cross PHAUL at or above 4000, thence....

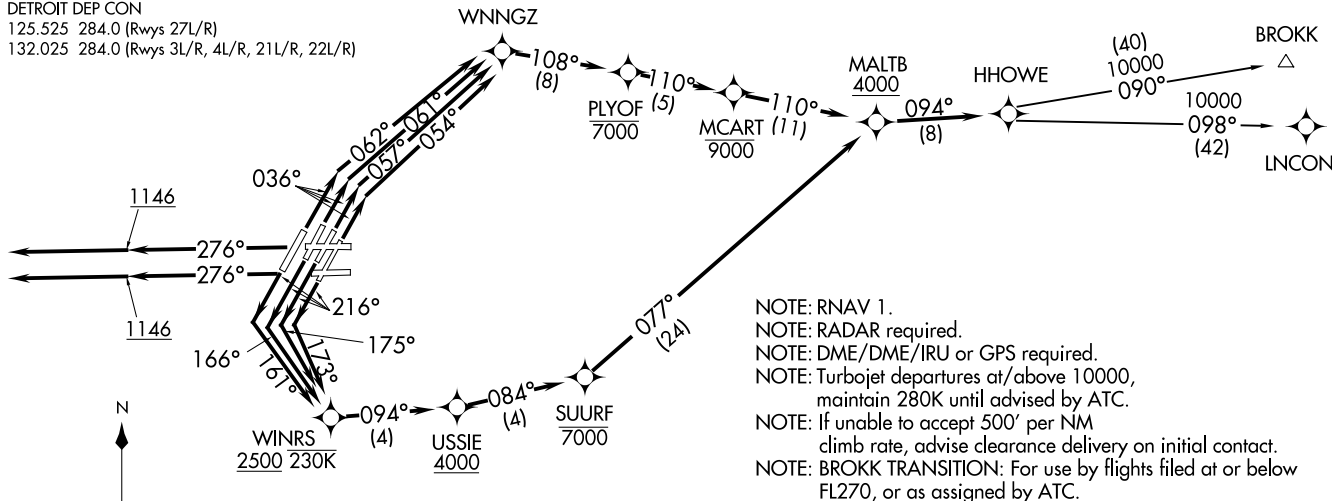
....on track 206° to CLVIN, then on (transition). Maintain 17000 or as assigned by ATC, expect filed altitude 10 minutes after departure.

STAZE TRANSITION (CLVIN2.STAZE):

HHOWE THREE DEPARTURE (RNAV)
(HHOWE3.HHOWE) 05DEC19
DETROIT, MICHIGAN
DETROIT METRO WAYNE COUNTY (DTW)

D-ATIS 118.125
CLNC DEL 120.65
CPDLC
GND CON
121.8 (NW) 119.45 (NE)
132.725 (SW) 119.25 (SE)
METRO TOWER
118.4 317.725 (Rwys 3L/R, 21L/R, 27R)
128.75 317.725 (Rwy 27L)
135.0 317.725 (Rwy 4L/R, 22L/R)
DETROIT DEP CON
125.525 284.0 (Rwys 27L/R)
132.025 284.0 (Rwys 3L/R, 4L/R, 21L/R, 22L/R)

TOP ALTITUDE:
17000



TAKEOFF MINIMUMS:
Rwys 3L/R, 4L/R, 21L/R, 22L/R, 27L/R: Standard with minimum climb of 500' per NM to 1146.

NOTE: Chart not to scale.

(NARRATIVE ON FOLLOWING PAGE)

(HHOWE3.HHOWE) 21112
HHOWE THREE DEPARTURE (RNAV)
AL-119 (FAA)
DETROIT METRO WAYNE COUNTY (DTW)
DETROIT, MICHIGAN

DEPARTURE ROUTE DESCRIPTION



NOTE: See additional requirements in RNAV departures AAUP.

TAKEOFF RUNWAY 3L: Climb on heading 036° to intercept course 057° to WNNGZ, then on track 108° to cross PLYOF at or below 7000, then on track 110° to cross MCART at or below 9000, then on track 110° to cross MALTB at or above 4000, thence....

TAKEOFF RUNWAY 3R: Climb on heading 036° to intercept course 054° to WNNGZ, then on track 108° to cross PLYOF at or below 7000, then on track 110° to cross MCART at or below 9000, then on track 110° to cross MALTB at or above 4000, thence....

TAKEOFF RUNWAY 4L: Climb on heading 036° to intercept course 062° to WNNGZ, then on track 108° to cross PLYOF at or below 7000, then on track 110° to cross MCART at or below 9000, then on track 110° to cross MALTB at or above 4000, thence....

TAKEOFF RUNWAY 4R: Climb on heading 036° to intercept course 061° to WNNGZ, then on track 108° to cross PLYOF at or below 7000, then on track 110° to cross MCART at or below 9000, then on track 110° to cross MALTB at or above 4000, thence....

TAKEOFF RUNWAY 21L: Climb on heading 216° to intercept course 173° to cross WINRS at or above 2500 and at or below 230K, then on track 094° to cross USSIE at or above 4000, then on track 084° to cross SUURF at or below 7000, then on track 077° to cross MALTB at or above 4000, thence....

TAKEOFF RUNWAY 21R: Climb on heading 216° to intercept course 175° to cross WINRS at or above 2500 and at or below 230K, then on track 094° to cross USSIE at or above 4000, then on track 084° to cross SUURF at or below 7000, then on track 077° to cross MALTB at or above 4000, thence....

TAKEOFF RUNWAY 22L: Climb on heading 216° to intercept course 166° to cross WINRS at or above 2500 and at or below 230K, then on track 094° to cross USSIE at or above 4000, then on track 084° to cross SUURF at or below 7000, then on track 077° to cross MALTB at or above 4000, thence....

TAKEOFF RUNWAY 22R: Climb on heading 216° to intercept course 161° to cross WINRS at or above 2500 and at or below 230K, then on track 094° to cross USSIE at or above 4000, then on track 084° to cross SUURF at or below 7000, then on track 077° to cross MALTB at or above 4000, thence....

TAKEOFF RUNWAYS 27L/27R: Climb on heading 276° to 1146, then on heading 276° or as assigned for RADAR vectors to cross MALTB at or above 4000, thence....

....on track 094° to HHOWE, then on (transition). Maintain 17000 or as assigned by ATC, expect filed altitude 10 minutes after departure.

BROKK TRANSITION (HHOWE3.BROKK)
LNCON TRANSITION (HHOWE3.LNCON)

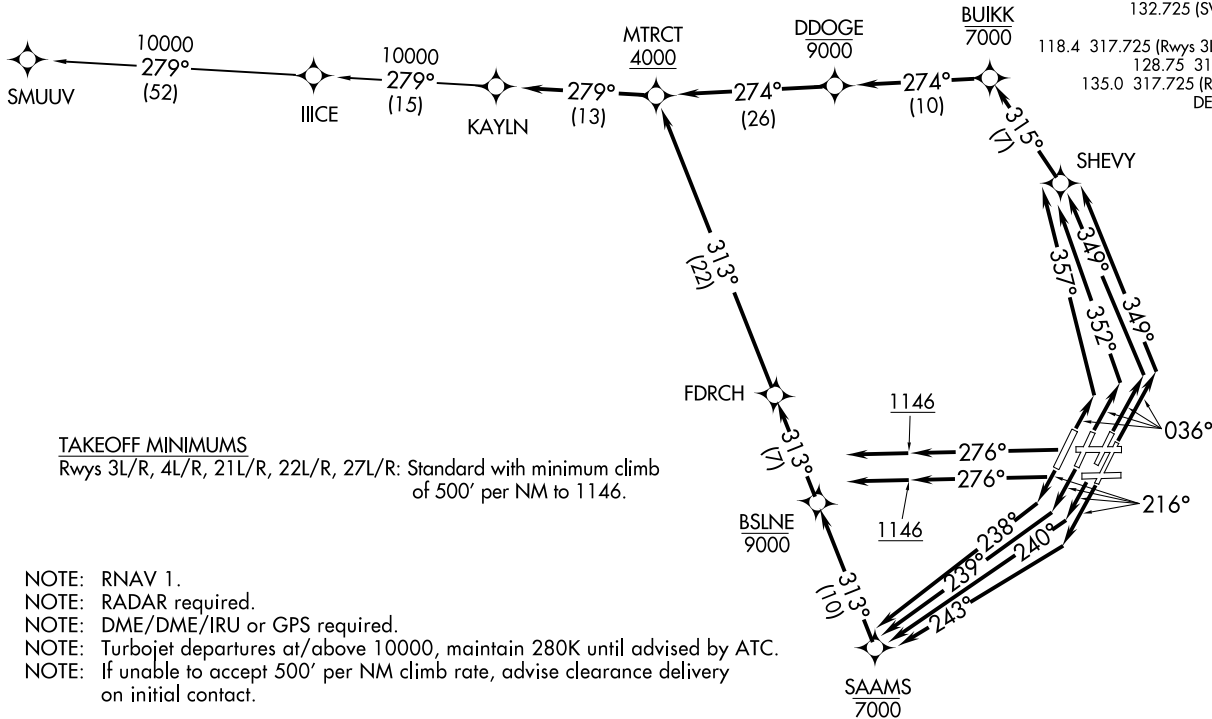
EC-1, 22 FEB 2024 to 21 MAR 2024

EC-1, 22 FEB 2024 to 21 MAR 2024

KAYLN TWO DEPARTURE (RNAV)
(KAYLN2.KAYLN) 15AUG19

DETROIT, MICHIGAN
DETROIT METRO WAYNE COUNTY (DTW)

**TOP ALTITUDE:
17000**



D-ATIS 118.125
CLNC DEL 120.65
CPDLC
GND CON
121.8 (NW) 119.45 (NE)
132.725 (SW) 119.25 (SE)
METRO TOWER
118.4 317.725 (Rwys 3L/R, 21L/R, 27R)
128.75 317.725 (Rwy 27L)
135.0 317.725 (Rwy 4L/R, 22L/R)
DETROIT DEP CON
125.525 284.0



(NARRATIVE ON FOLLOWING PAGE)

NOTE: Chart not to scale.

(KAYLN2.KAYLN) 21112
KAYLN TWO DEPARTURE (RNAV) AL-119 (FAA)
DETROIT METRO WAYNE COUNTY (DTW)
DETROIT, MICHIGAN



DEPARTURE ROUTE DESCRIPTION

NOTE:See additional requirements in RNAV departure AAUP.

TAKEOFF RUNWAY 3L/R: Climb on heading 036° to intercept course 349° to SHEVY, then on track 315° to cross BUIKK at or below 7000, then on track 274° to cross DDOGE at or below 9000, then on track 274° to cross MTRCT at or above 4000, thence....

TAKEOFF RUNWAY 4L: Climb on heading 036° to intercept course 357° to SHEVY, then on track 315° to cross BUIKK at or below 7000, then on track 274° to cross DDOGE at or below 9000, then on track 274° to cross MTRCT at or above 4000, thence....

TAKEOFF RUNWAY 4R: Climb on heading 036° to intercept course 352° to SHEVY, then on track 315° to cross BUIKK at or below 7000, then on track 274° to cross DDOGE at or below 9000, then on track 274° to cross MTRCT at or above 4000, thence....

TAKEOFF RUNWAY 21L: Climb on heading 216° to intercept course 243° to cross SAAMS at or below 7000, then on track 313° to cross BSLNE at or below 9000, then on track 313° to FDRCH, then on track 313° to cross MTRCT at or above 4000, thence....

TAKEOFF RUNWAY 21R: Climb on heading 216° to intercept course 240° to cross SAAMS at or below 7000, then on track 313° to cross BSLNE at or below 9000, then on track 313° to FDRCH, then on track 313° to cross MTRCT at or above 4000, thence....

TAKEOFF RUNWAY 22L: Climb on heading 216° to intercept course 239° to cross SAAMS at or below 7000, then on track 313° to cross BSLNE at or below 9000, then on track 313° to FDRCH, then on track 313° to cross MTRCT at or above 4000, thence....

TAKEOFF RUNWAY 22R: Climb on heading 216° to intercept course 238° to cross SAAMS at or below 7000, then on track 313° to cross BSLNE at or below 9000, then on track 313° to FDRCH, then on track 313° to cross MTRCT at or above 4000, thence....

TAKEOFF RUNWAYS 27L/R: Climb on heading 276° to 1146, then on heading 276° or as assigned for RADAR vectors to cross MTRCT at or above 4000, thence....

....on track 279° to KAYLN, then on (transition). Maintain 17000 or as assigned by ATC, expect filed altitude 10 minutes after departure.

SMUUV TRANSITION (KAYLN2.SMUUV)

EC-1, 22 FEB 2024 to 21 MAR 2024

EC-1, 22 FEB 2024 to 21 MAR 2024

(KZLOV1, WINNZ) 14JUL22

KZLOV ONE DEPARTURE (RNAV)

DETROIT, MICHIGAN
DETROIT METRO WAYNE COUNTY (DTW)

D-ATIS 118.125
CLNC DEL 120.65
CPDLC
GND CON
121.8 (NW) 119.45 (NE)
132.725 (SW) 119.25 (SE)
METRO TOWER
118.4 317.725 (Rwys 3L/R, 21L/R, 27R)
128.75 317.725 (Rwy 27L)
135.0 317.725 (Rwy 4L/R, 22L/R)
DETROIT DEP CON
132.025 284.0

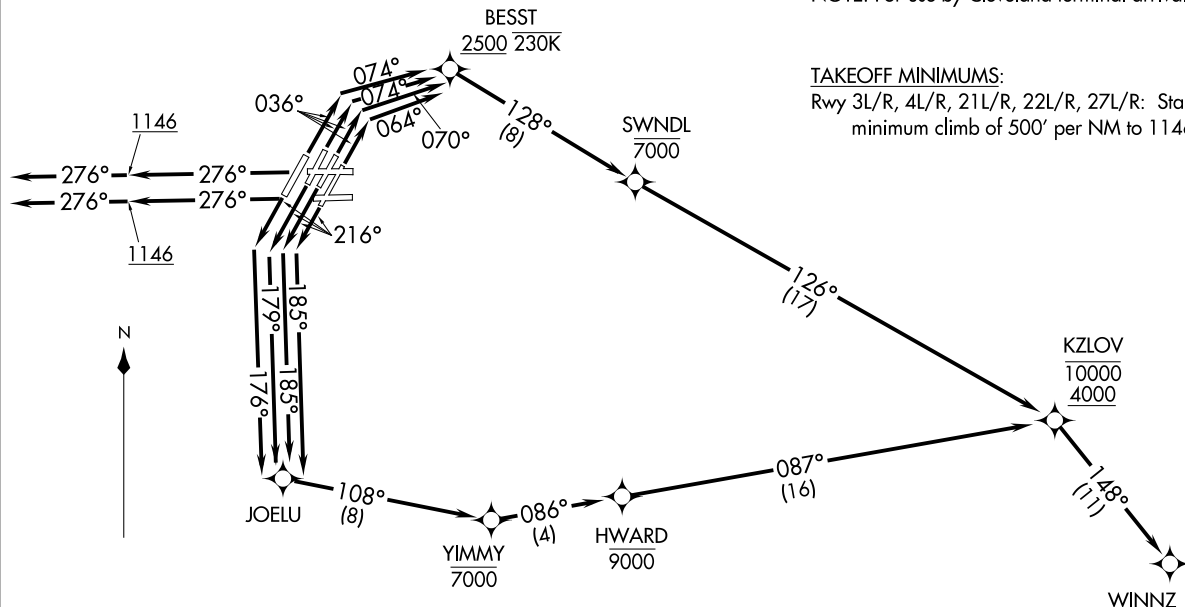
RNAV 1 - DME/DME/IRU or GPS.

RADAR required.

TOP ALTITUDE:
10000

NOTE: Turbojet departures at/above 10000,
maintain 280K until advised by ATC.
NOTE: If unable initial 500' per NM climb rate,
advise clearance delivery on initial contact.
NOTE: For use by Cleveland terminal arrivals only.

TAKEOFF MINIMUMS:
Rwy 3L/R, 4L/R, 21L/R, 22L/R, 27L/R: Standard with
minimum climb of 500' per NM to 1146.



NOTE: Chart not to scale.

(NARRATIVE ON FOLLOWING PAGE)

(KZLOV1, WINNZ) 22195

KZLOV ONE DEPARTURE (RNAV)

DETROIT METRO WAYNE COUNTY (DTW)
DETROIT, MICHIGAN
AL-119 (FAA)

DEPARTURE ROUTE DESCRIPTION	
<div><div>▼</div><div>TAKEOFF RUNWAY 3L: Climb on heading 036° to intercept course 070° to cross BESST at or above 2500 and at or below 230K, then on track 128° to cross SWNDL at or below 7000, then on track 126° to cross KZLOV at or above 4000 and at or below 10000, thence....</div><div>TAKEOFF RUNWAY 3R: Climb on heading 036° to intercept course 064° to cross BESST at or above 2500 and at or below 230K, then on track 128° to cross SWNDL at or below 7000, then on track 126° to cross KZLOV at or above 4000 and at or below 10000, thence....</div><div>TAKEOFF RUNWAY 4L/R: Climb on heading 036° to intercept course 074° to cross BESST at or above 2500 and at or below 230K, then on track 128° to cross SWNDL at or below 7000, then on track 126° to cross KZLOV at or above 4000 and at or below 10000, thence....</div><div>TAKEOFF RUNWAY 21L/R: Climb on heading 216° to intercept course 185° to JOELU, then on track 108° to cross YIMMY at or below 7000, then on track 086° to cross HWARD at or below 9000, then on track 087° to cross KZLOV at or above 4000 and at or below 10000, thence....</div><div>TAKEOFF RUNWAY 22L: Climb on heading 216° to intercept course 179° to JOELU, then on track 108° to cross YIMMY at or below 7000, then on track 086° to cross HWARD at or below 9000, then on track 087° to cross KZLOV at or above 4000 and at or below 10000, thence....</div><div>TAKEOFF RUNWAY 22R: Climb on heading 216° to intercept course 176° to JOELU, then on track 108° to cross YIMMY at or below 7000, then on track 086° to cross HWARD at or below 9000, then on track 087° to cross KZLOV at or above 4000 and at or below 10000, thence....</div><div>TAKEOFF RUNWAY 27L/R: Climb on heading 276° to 1146, then on heading 276° or as assigned by ATC for RADAR vectors to cross KZLOV at or above 4000 and at or below 10000, thence....</div><div>....on track 148° to WINNZ. Maintain assigned altitude, expect filed altitude ten minutes after departure.</div></div>	

EC-1, 22 FEB 2024 to 21 MAR 2024

EC-1, 22 FEB 2024 to 21 MAR 2024

LIIDS TWO DEPARTURE (RNAV)
(LIIDS2.LIIDS) 15AUG19

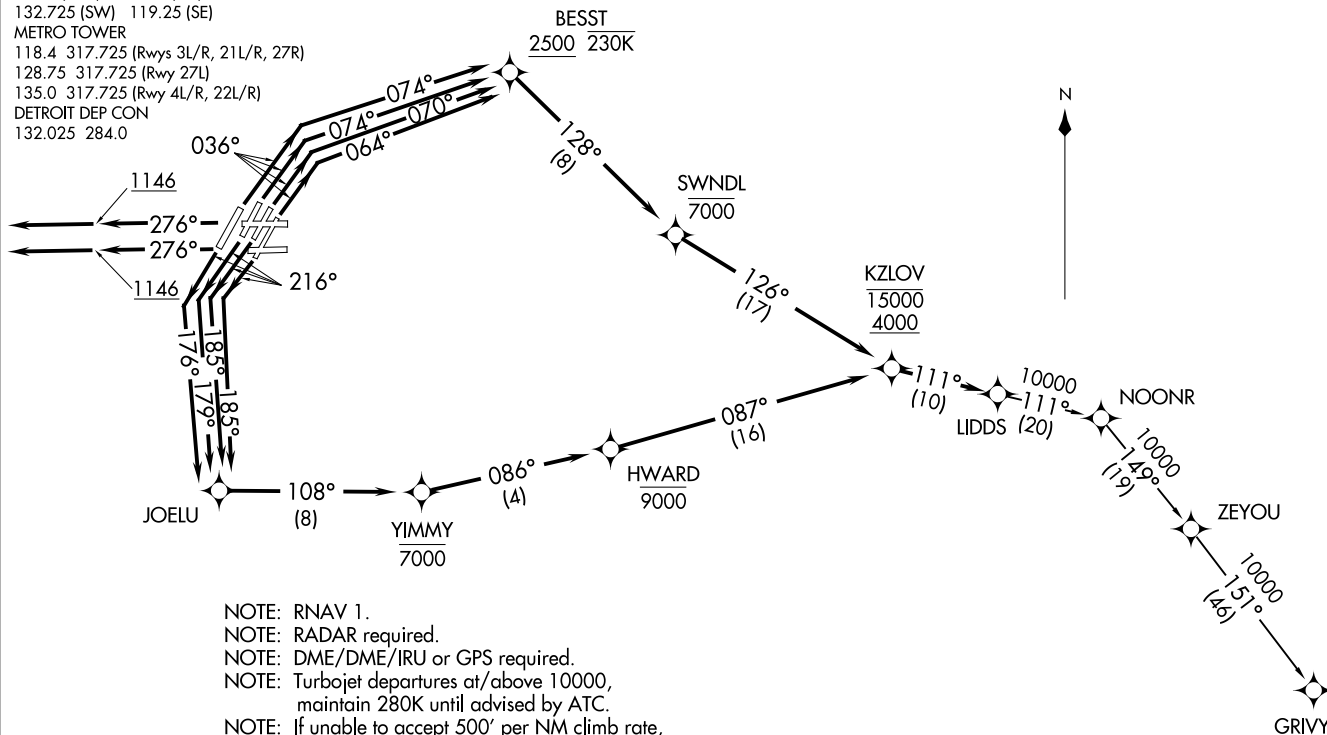
DETROIT, MICHIGAN
DETROIT METRO WAYNE COUNTY (DTW)

D-ATIS 118.125
CLNC DEL 120.65
CPDLC
GND CON
121.8 (NW) 119.45 (NE)
132.725 (SW) 119.25 (SE)
METRO TOWER
118.4 317.725 (Rwys 3L/R, 21L/R, 27R)
128.75 317.725 (Rwy 27L)
135.0 317.725 (Rwy 4L/R, 22L/R)
DETROIT DEP CON
132.025 284.0

TAKEOFF MINIMUMS:

Rwys 3L/R, 4L/R, 21L/R, 22L/R, 27L/R: Standard with minimum climb of 500' per NM to 1146.

**TOP ALTITUDE:
17000**



- NOTE: RNAV 1.
NOTE: RADAR required.
NOTE: DME/DME/IRU or GPS required.
NOTE: Turbojet departures at/above 10000, maintain 280K until advised by ATC.
NOTE: If unable to accept 500' per NM climb rate, advise clearance delivery on initial contact.

(NARRATIVE ON FOLLOWING PAGE)

LIIDS TWO DEPARTURE (RNAV)
(LIIDS2.LIIDS) 21112

DETROIT METRO WAYNE COUNTY (DTW)
DETROIT, MICHIGAN
AL-119 (FAA)



DEPARTURE ROUTE DESCRIPTION

NOTE: See additional requirements in RNAV departure AAUP.

- TAKEOFF RUNWAY 3L: Climb on heading 036° to intercept course 070° to cross BESST at or above 2500 and at or below 230K, then on track 128° to cross SWNDL at or below 7000, then on track 126° to cross KZLOV between 4000 and 15000, thence....
- TAKEOFF RUNWAY 3R: Climb on heading 036° to intercept course 064° to cross BESST at or above 2500 and at or below 230K, then on track 128° to cross SWNDL at or below 7000, then on track 126° to cross KZLOV between 4000 and 15000, thence....
- TAKEOFF RUNWAYS 4L/R: Climb on heading 036° to intercept course 074° to cross BESST at or above 2500 and at or below 230K, then on track 128° to cross SWNDL at or below 7000, then on track 126° to cross KZLOV between 4000 and 15000, thence....
- TAKEOFF RUNWAYS 21L/R: Climb on heading 216° to intercept course 185° to JOELU, then on track 108° to cross YIMMY at or below 7000, then on track 086° to cross HWARD at or below 9000, then on track 087° to cross KZLOV between 4000 and 15000, thence....
- TAKEOFF RUNWAY 22L: Climb on heading 216° to intercept course 179° to JOELU, then on track 108° to cross YIMMY at or below 7000, then on track 086° to cross HWARD at or below 9000, then on track 087° to cross KZLOV between 4000 and 15000, thence....
- TAKEOFF RUNWAY 22R: Climb on heading 216° to intercept course 176° to JOELU, then on track 108° to cross YIMMY at or below 7000, then on track 086° to cross HWARD at or below 9000, then on track 087° to cross KZLOV between 4000 and 1500, thence....
- TAKEOFF RUNWAY 27L: Climb on heading 276° to 1146, then on heading 276° or as assigned for RADAR vectors to cross KZLOV between 4000 and 15000, thence....
- TAKEOFF RUNWAY 27R: Climb on heading 276° to 1146, then on heading 276° or as assigned for RADAR vectors to cross KZLOV between 4000 and 15000, thence....

....on track 111° to LIDDS, then on (transition). Maintain 17000 or as assigned by ATC, expect filed altitude 10 minutes after departure.

GRIVY TRANSITION (LIDDS2.GRIVY)

EC-1, 22 FEB 2024 to 21 MAR 2024

EC-1, 22 FEB 2024 to 21 MAR 2024

TOP ALTITUDE:
ASSIGNED BY ATC



PISTN

(42)

020°

5000

DETROIT DEP CON
WEST
118.95 284.0

DUNKS

296°

(39)

HARWL


281°

(37)

106°

(40)

MAARS

DETROIT
113.4 DXO 
Chan 81

DETROIT DEP CON
EAST
134.3 284.0

217°

(37)

ANNTS

217°

(30)

ILLIE

(67)

TAKEOFF MINIMUMS

Rwys 3L/R, 4L/R, 9L/R, 21L/R, 22L/R, 27L/R: Standard.

D-ATIS 118.125
CLNC DEL 120.65
CPDLC
GND CON
121.8 (NW) 119.45 (NE)
132.725 (SW) 119.25 (SE)
METRO TOWER
118.4 317.725 (Rwys 3L/R, 21L/R, 27R)
128.75 317.725 (Rwy 27L)
135.0 317.725 (Rwy 4L/R, 22L/R)

NOTE: RADAR required.
NOTE: DME required.
NOTE: For use by non-RNAV equipped
aircraft only.

SPECIAL INSTRUCTIONS:

When using this departure, file the appropriate depicted departure fix and route.
Aircraft over HARWL must file FL220 and below. PROP AIRCRAFT departing KDTW
Rwy 21L/R and 22L/R westbound, cross DXO 3.5 DME at or above 2500 MSL.
Aircraft landing Cleveland (CLE) must file MAARS transition. Turbojet departures
at/above 10000, maintain 280K until advised by ATC. If unable, advise ATC
prior to departure.

(NARRATIVE ON FOLLOWING PAGE)

NOTE: Chart not to scale.



DEPARTURE ROUTE DESCRIPTION

TAKEOFF ALL RUNWAYS: Climb on assigned heading, thence....

.....maintain ATC assigned altitude for RADAR vectors to intercept filed/assigned transition or enroute fix/navaid. When ATC assigned altitude is at or above 5000, cross DXO 10 DME Arc at or above 5000 for noise abatement. If unable to comply, advise ATC prior to departure. Expect clearance to filed altitude/flight level within ten (10) minutes after departure.

DUNKS TRANSITION (METRO3.DUNKS): From over DXO VOR/DME on DXO R-296 to DUNKS.

HARWL TRANSITION (METRO3.HARWL): From over DXO VOR/DME on DXO R-281 to HARWL.

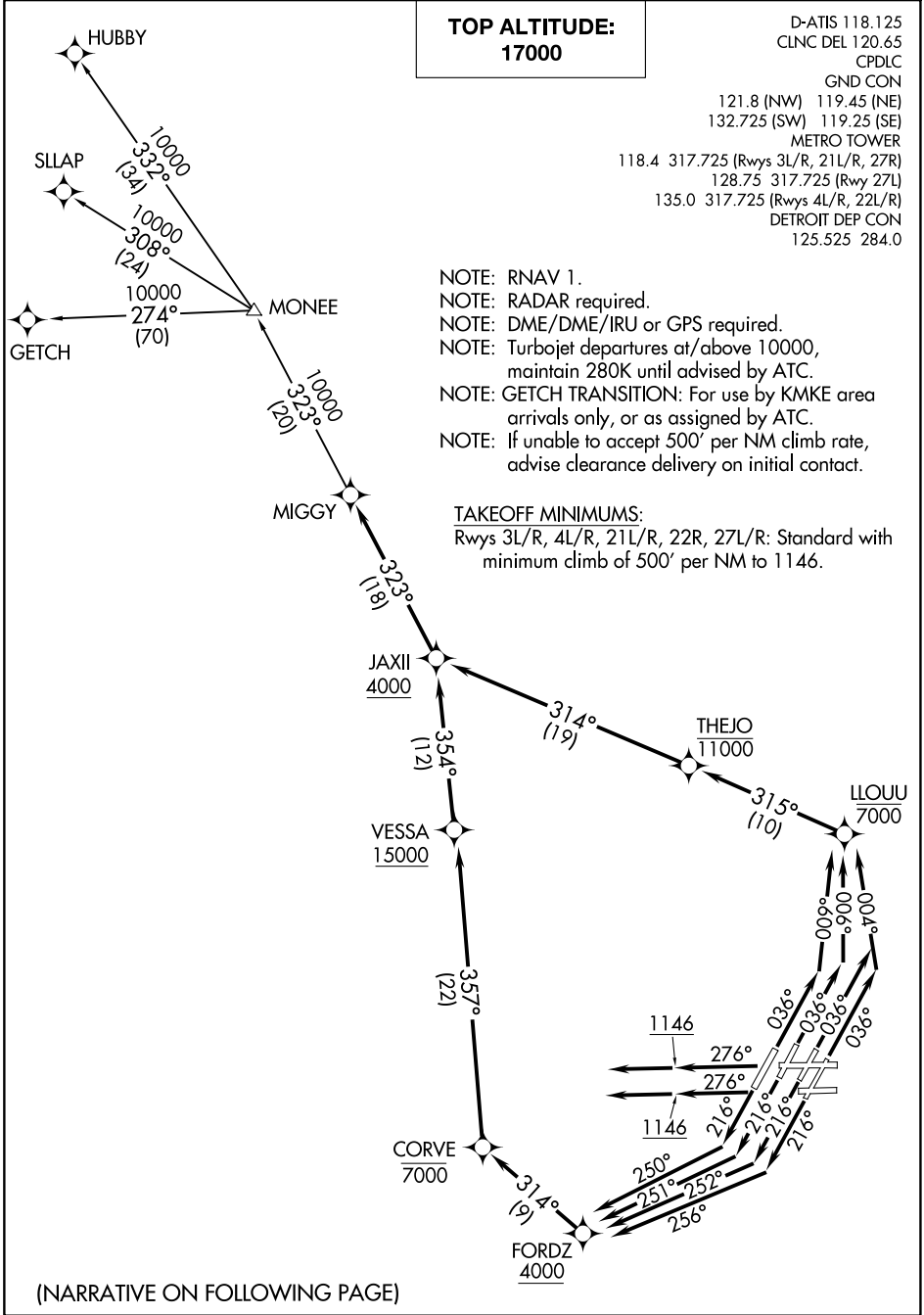
ILLIE TRANSITION (METRO3.ILLIE): From over DXO VOR/DME on DXO R-217 to ILLIE.

MAARS TRANSITION (METRO3.MAARS): From over DXO VOR/DME on DXO R-106 to MAARS.

PISTN TRANSITION (METRO3.PISTN): From over DXO VOR/DME on DXO R-020 to PISTN.

EC-1, 22 FEB 2024 to 21 MAR 2024

EC-1, 22 FEB 2024 to 21 MAR 2024





DEPARTURE ROUTE DESCRIPTION

NOTE:See additional requirements in RNAV departure AAUP.

TAKEOFF RUNWAYS 3L/R: Climb on heading 036° to intercept course 004° to cross LLOUU at or below 7000, then on track 315° to cross THEJO at or below 11000, then on track 314° to cross JAXII at or above 4000, thence....

TAKEOFF RUNWAY 4L: Climb on heading 036° to intercept course 009° to cross LLOUU at or below 7000, then on track 315° to cross THEJO at or below 11000, then on track 314° to cross JAXII at or above 4000, thence....

TAKEOFF RUNWAY 4R: Climb on heading 036° to intercept course 006° to cross LLOUU at or below 7000, then on track 315° to cross THEJO at or below 11000, then on track 314° to cross JAXII at or above 4000, thence....

TAKEOFF RUNWAY 21L: Climb on heading 216° to intercept course 256° to cross FORDZ at or above 4000, then on track 314° to cross CORVE at or below 7000, then on track 357° to cross VESSA at or above 15000, then on track 354° to JAXII, thence....

TAKEOFF RUNWAY 21R: Climb on heading 216° to intercept course 252° to cross FORDZ at or above 4000, then on track 314° to cross CORVE at or below 7000, then on track 357° to cross VESSA at or above 15000, then on track 354° to JAXII, thence....

TAKEOFF RUNWAY 22L: Climb on heading 216° to intercept course 251° to cross FORDZ at or above 4000, then on track 314° to cross CORVE at or below 7000, then on track 357° to cross VESSA at or above 15000, then on track 354° to JAXII, thence....

TAKEOFF RUNWAY 22R: Climb on heading 216° to intercept course 250° to cross FORDZ at or above 4000, then on track 314° to cross CORVE at or below 7000, then on track 357° to cross VESSA at or above 15000, then on track 354° to JAXII, thence....

TAKEOFF RUNWAY 27L/R: Climb on heading 276° to 1146, then on heading 276° or as assigned for RADAR vectors to cross JAXII at or above 4000, thence....

....on track 323° to MIGGY, then on (transition). Maintain 17000 or as assigned by ATC, expect filed altitude 10 minutes after departure.

GETCH TRANSITION (MIGGY2.GETCH)
HUBBY TRANSITION (MIGGY2.HUBBY)
SLAP TRANSITION (MIGGY2.SLAP)

EC-1, 22 FEB 2024 to 21 MAR 2024

EC-1, 22 FEB 2024 to 21 MAR 2024

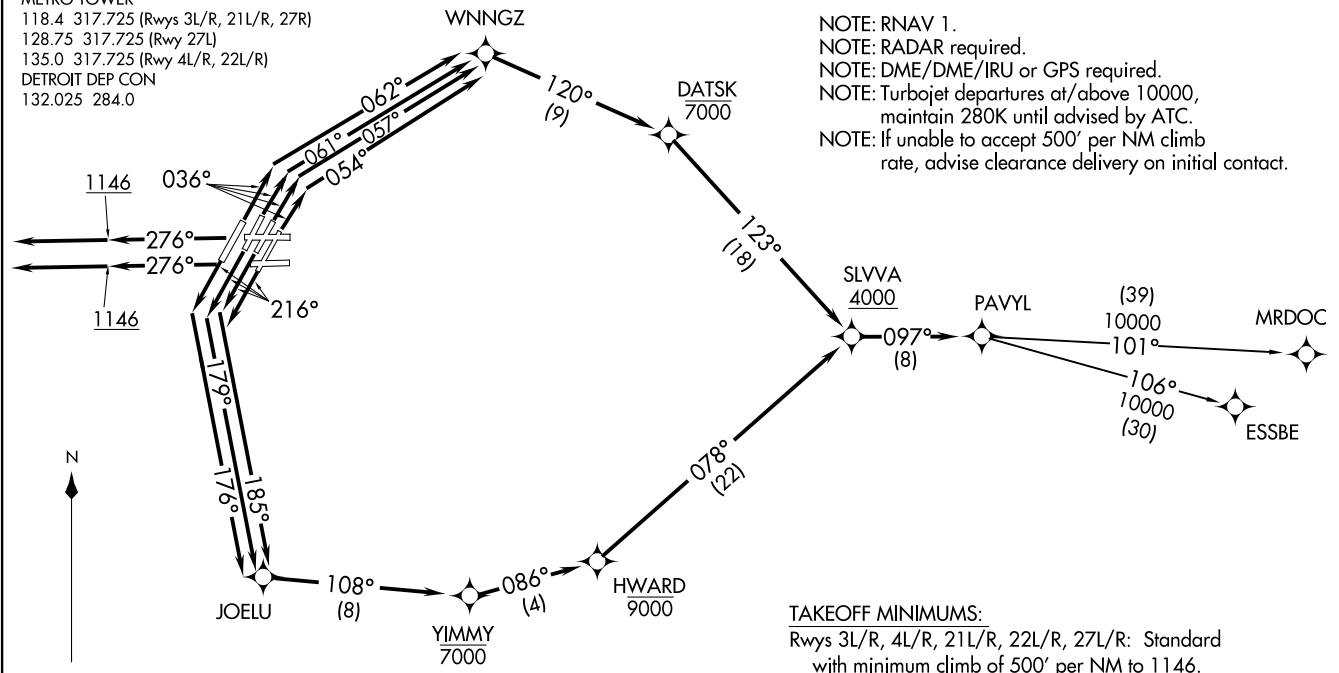
TOP ALTITUDE:
17000

NOTE: RNAV 1.
NOTE: RADAR required.
NOTE: DME/DME/IRU or GPS required.
NOTE: Turbojet departures at/above 10000, maintain 280K until advised by ATC.
NOTE: If unable to accept 500' per NM climb rate, advise clearance delivery on initial contact.

TAKEOFF MINIMUMS:
Rwys 3L/R, 4L/R, 21L/R, 22L/R, 27L/R: Standard with minimum climb of 500' per NM to 1146.

(NARRATIVE ON FOLLOWING PAGE)

D-ATIS 118.125
CLNC DEL 120.65
CPDLC
GND CON
121.8 (NW) 119.45 (NE)
132.725 (SW) 119.25 (SE)
METRO TOWER
118.4 317.725 (Rwys 3L/R, 21L/R, 27R)
128.75 317.725 (Rwy 27L)
135.0 317.725 (Rwy 4L/R, 22L/R)
DETROIT DEP CON
132.025 284.0



NOTE: Chart not to scale.



DEPARTURE ROUTE DESCRIPTION

NOTE:See additional requirements in RNAV departure AAUP.

TAKEOFF RUNWAY 3L: Climb on heading 036° to intercept course 057° to WNNGZ, then on track 120° to cross DATSK at or below 7000, then on track 123° to cross SLVVA at or above 4000, thence....

TAKEOFF RUNWAY 3R: Climb on heading 036° to intercept course 054° to WNNGZ, then on track 120° to cross DATSK at or below 7000, then on track 123° to cross SLVVA at or above 4000, thence....

TAKEOFF RUNWAY 4L: Climb on heading 036° to intercept course 062° to WNNGZ, then on track 120° to cross DATSK at or below 7000, then on track 123° to cross SLVVA at or above 4000, thence....

TAKEOFF RUNWAY 4R: Climb on heading 036° to intercept course 061° to WNNGZ, then on track 120° to cross DATSK at or below 7000, then on track 123° to cross SLVVA at or above 4000, thence....

TAKEOFF RUNWAYS 21L/R: Climb on heading 216° to intercept course 185° to JOELU, then on track 108° to cross YIMMY at or below 7000, then on track 086° to cross HWARD at or below 9000, then on track 078° to cross SLVVA at or above 4000, thence....

TAKEOFF RUNWAY 22L: Climb on heading 216° to intercept course 179° to JOELU, then on track 108° to cross YIMMY at or below 7000, then on track 086° to cross HWARD at or below 9000, then on track 078° to cross SLVVA at or above 4000, thence....

TAKEOFF RUNWAY 22R: Climb on heading 216° to intercept course 176° to JOELU, then on track 108° to cross YIMMY at or below 7000, then on track 086° to cross HWARD at or below 9000, then on track 078° to cross SLVVA at or above 4000, thence....

TAKEOFF RUNWAYS 27L/27R: Climb on heading 276° to 1146, then on heading 276° or as assigned for RADAR vectors to cross SLVVA at or above 4000, thence....

....on track 097° to PAVYL, then on (transition). Maintain 17000 or as assigned by ATC, expect filed altitude 10 minutes after departure.

ESSBE TRANSITION (PAVYL2.ESSBE)
MRDOC TRANSITION (PAVYL2.MRDOC)

EC-1, 22 FEB 2024 to 21 MAR 2024

EC-1, 22 FEB 2024 to 21 MAR 2024

SNDERS TWO DEPARTURE (RNAV) Departure Routes

DETROIT, MICHIGAN

TOP ALTITUDE:
17000

D-ATIS 118.125

CLNC DEL 120,65

CPDLC

GND CON

121.8 (NW) 119.45 (NE)

132.725 (SW) 119.25 (SE)

METRO TOWER

118.4 317.725 (R_{wys} 3L/R, 21L/R, 27R)

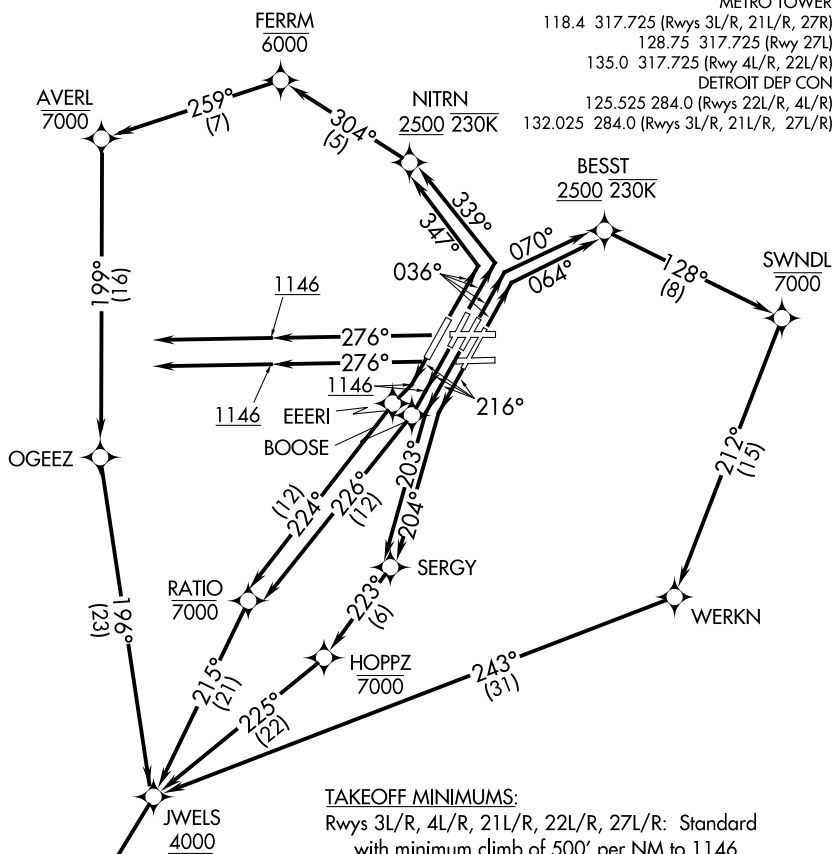
128.75 317.725 (Rwy 27L)

135.0 317.725 (Rwy 4L/R, 22L/R)

DETROIT DEP CON

125.525 284.0 (Rwys 22L/R, 4L/R)

132.025 284.0 (Rwys 3L/R, 21L/R, 27L/R)



TAKEOFF MINIMUMS:

Rwys 3L/R, 4L/R, 21L/R, 22L/R, 27L/R: Standard with minimum climb of 500' per NM to 1146.

NOTE: RNAV 1.

NOTE: RADAR required.

NOTE: DME/DME/IRU or GPS required.

NOTE: Turbojet departures at/above 10000, maintain 280K until advised by ATC.

NOTE: TORRR TRANSITION: For use by KIND and KCVG area arrivals only

and flights filed at or below FL220, or as assigned by ATC.

NOTE: If unable to accept 500' per NM climb rate, advise clearance delivery on initial contact.

SNDRS

See following
page for
Transition Routes

(CONTINUED ON FOLLOWING PAGE)

NOTE: Chart not to scale.

SNDRS TWO DEPARTURE (RNAV) Departure Routes

DETROIT, MICHIGAN

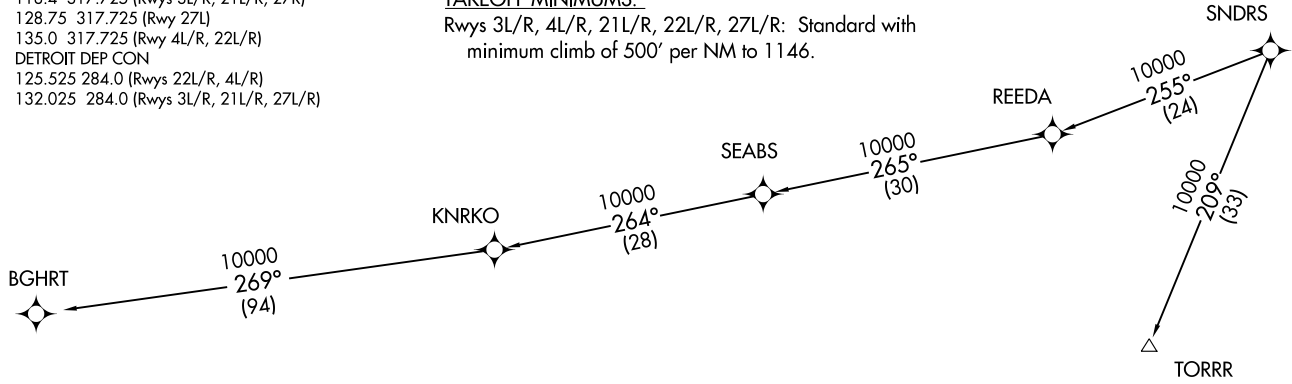
DETROIT METRO WAYNE COUNTY (DTW)

(SNDRS2.SNDRS) 15AUG19

TOP ALTITUDE:
17000

D-ATIS 118.125
CLNC DEL 120.65
CPDLC
GND CON
121.8 (NW) 119.45 (NE)
132.725 (SW) 119.25 (SE)
METRO TOWER
118.4 317.725 (Rwys 3L/R, 21L/R, 27R)
128.75 317.725 (Rwy 27L)
135.0 317.725 (Rwy 4L/R, 22L/R)
DETROIT DEP CON
125.525 284.0 (Rwys 22L/R, 4L/R)
132.025 284.0 (Rwys 3L/R, 21L/R, 27L/R)

TAKEOFF MINIMUMS:
Rwys 3L/R, 4L/R, 21L/R, 22L/R, 27L/R: Standard with
minimum climb of 500' per NM to 1146.



NOTE: RNAV 1.
NOTE: RADAR required.
NOTE: DME/DME/IRU or GPS required.
NOTE: Turbojet departures at/above 10000, maintain 280K until advised by ATC.
NOTE: TORRR TRANSITION: For use by KIND and KCVG area arrivals only and flights
filed at or below FL220, or as assigned by ATC.
NOTE: If unable to accept 500' per NM climb rate,
advise clearance delivery on initial contact.

NOTE: Chart not to scale.

(NARRATIVE ON FOLLOWING PAGE)



DEPARTURE ROUTE DESCRIPTION

NOTE: See additional requirements in RNAV departure AUP.

TAKEOFF RUNWAY 3L: Climb on heading 036° to intercept course 070° to cross BESST at or above 2500 and at or below 230K, then on track 128° to cross SWNDL at or below 7000, then on track 212° to WERKN, then on track 243° to cross JWELS at or above 4000, thence...

TAKEOFF RUNWAY 3R: Climb on heading 036° to intercept course 064° to cross BESST at or above 2500 and at or below 230K, then on track 128° to cross SWNDL at or below 7000, then on track 212° to WERKN, then on track 243° to cross JWELS at or above 4000, thence...

TAKEOFF RUNWAY 4L: Climb on heading 036° to intercept course 347° to cross NITRN at or above 2500 and at or below 230K, then on track 304° to cross FERRM at or below 6000, then on track 259° to cross AVERL at or below 7000, then or track 199° to OGEEZ, then on track 196° to cross JWELS at or above 4000, thence...

TAKEOFF RUNWAY 4R: Climb on heading 036° to intercept course 339° to cross NITRN at or above 2500 and at or below 230K, then on track 304° to cross FERRM at or below 6000, then on track 259° to cross AVERL at or below 7000, then or track 199° to OGEEZ, then on track 196° to cross JWELS at or above 4000, thence....

TAKEOFF RUNWAY 21L: Climb on heading 216° to intercept course 204° to SERGY, then on track 223° to cross HOPPPZ at or below 7000, then on track 225° to cross JWELS at or above 4000, thence....

TAKEOFF RUNWAY 21R: Climb on heading 216° to intercept course 203° to SERGY, then on track 223° to cross HOPPPZ at or below 7000, then on track 225° to cross JWELS at or above 4000, thence....

TAKEOFF RUNWAY 22L: Climb on heading 216° to 1146, then direct BOOSE, then on track 226° to cross RATIO at or below 7000, then on track 215° to cross JWELS at or above 4000, thence....

TAKEOFF RUNWAY 22R: Climb on heading 216° to 1146, then direct EEERI, then on track 224° to cross RATIO at or below 7000, then on track 215° to cross JWELS at or above 4000, thence....

TAKEOFF RUNWAYS 27L/27R: Climb on heading 276° to 1146, then on heading 276° or as assigned for RADAR vectors to cross JWELS at or above 4000, thence....

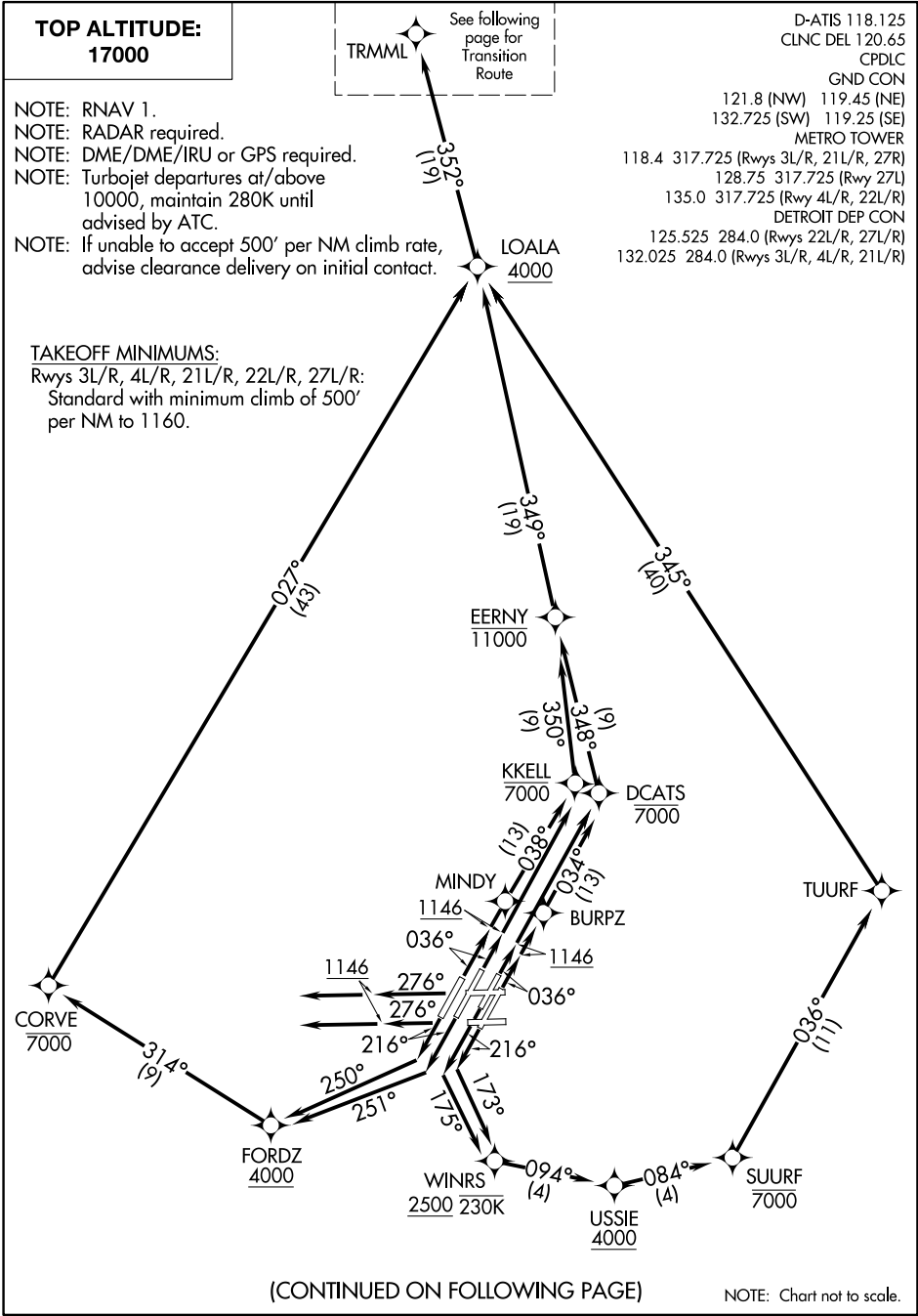
....on track 218° to SNDRS, then on (transition). Maintain 17000 or as assigned by ATC, expect filed altitude 10 minutes after departure.

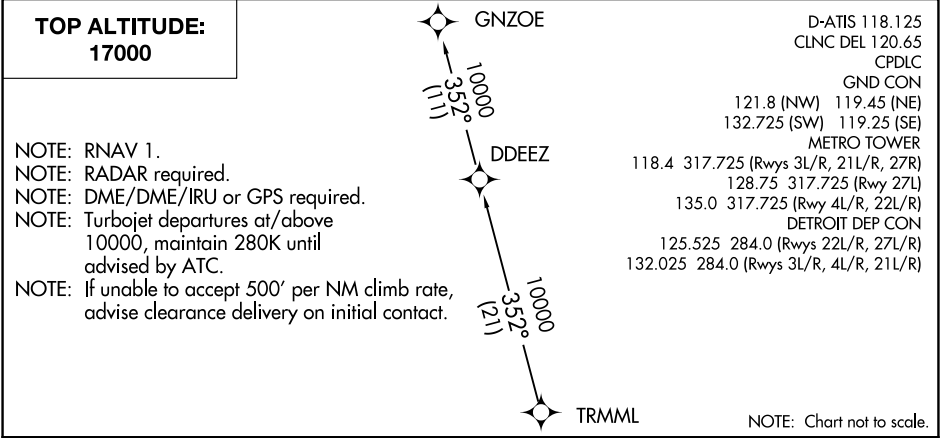
BGHRT TRANSITION (SNDRS2.BGHRT):

TORRR TRANSITION (SNDRS2.TORRR):

EC-1, 22 FEB 2024 to 21 MAR 2024

EC-1, 22 FEB 2024 to 21 MAR 2024

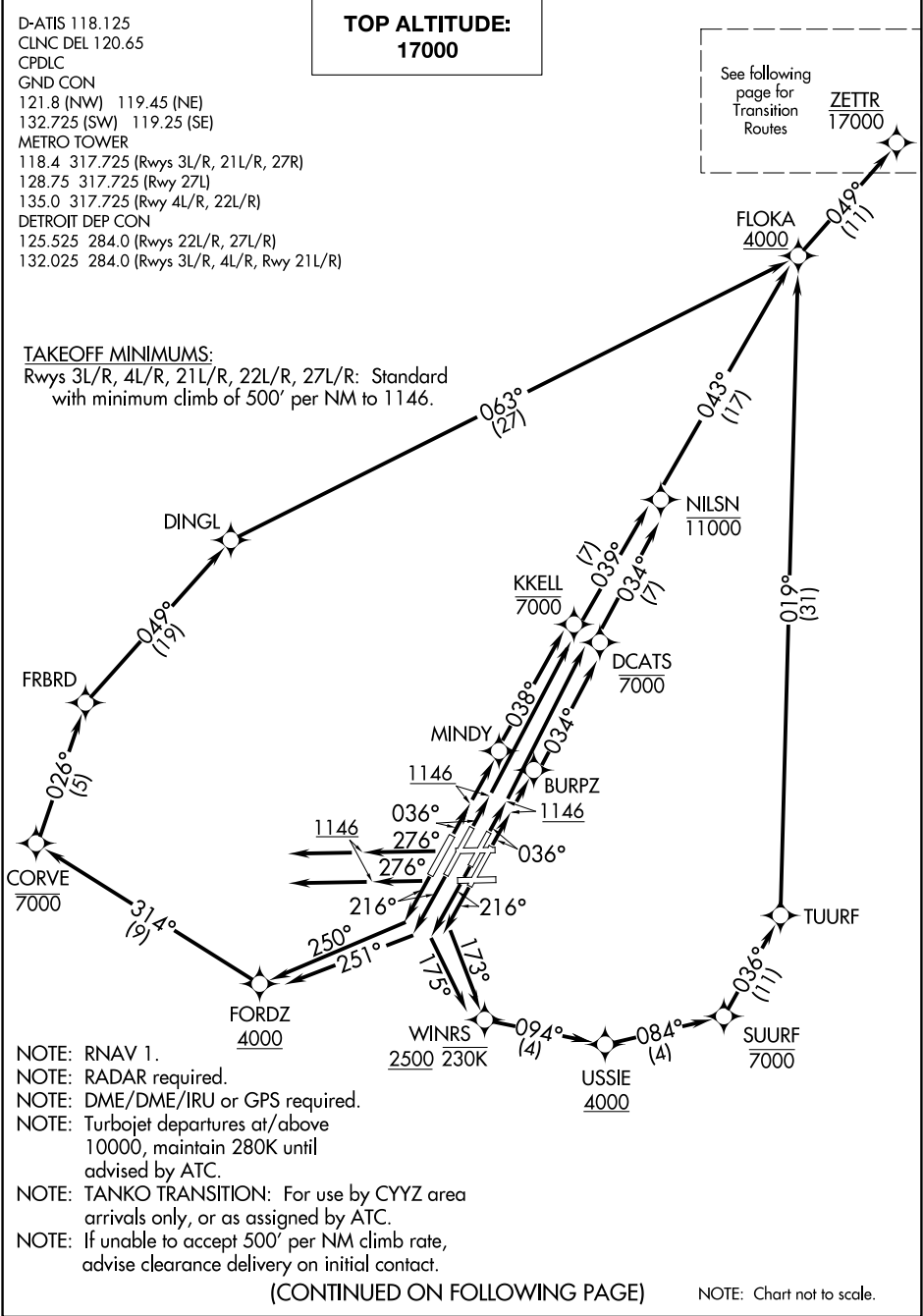




DEPARTURE ROUTE DESCRIPTION	
NOTE: See additional requirements in RNAV departure AAUP.	
TAKEOFF RUNWAY 3L:	Climb on heading 036° to 1146, then direct to cross DCATS at or below 7000, then on track 348° to cross EERNY at or below 11000, then on track 349° to cross LOALA at or above 4000, thence....
TAKEOFF RUNWAY 3R:	Climb on heading 036° to 1146, then direct BURPZ, then on track 034° to cross DCATS at or below 7000, then on track 348° to cross EERNY at or below 11000, then on track 349° to cross LOALA at or above 4000, thence....
TAKEOFF RUNWAY 4L:	Climb on heading 036° to 1146, then direct MINDY, then on track 038° to cross KKELL at or below 7000, then on track 350° to cross EERNY at or below 11000, then on track 349° to cross LOALA at or above 4000, thence....
TAKEOFF RUNWAY 4R:	Climb on heading 036° to 1146, then direct to cross KKELL at or below 7000, then on track 350° to cross EERNY at or below 11000, then on track 349° to cross LOALA at or above 4000, thence....
TAKEOFF RUNWAY 21L:	Climb on heading 216° to intercept course 173° to cross WINRS at or above 2500 and at or below 230K, then on track 094° to cross USSIE at or above 4000, then on track 084° to cross SUURF at or below 7000, then on track 036° to TUURF, then on track 345° to cross LOALA at or above 4000, thence....
TAKEOFF RUNWAY 21R:	Climb on heading 216° to intercept course 175° to cross WINRS at or above 2500 and at or below 230K, then on track 094° to cross USSIE at or above 4000, then on track 084° to cross SUURF at or below 7000, then on track 036° to TUURF, then on track 345° to cross LOALA at or above 4000, thence....
TAKEOFF RUNWAY 22L:	Climb on heading 216° to intercept course 251° to cross FORDZ at or above 4000, then on track 314° to cross CORVE at or below 7000, then on track 027° to cross LOALA at or above 4000, thence....
TAKEOFF RUNWAY 22R:	Climb on heading 216° to intercept course 250° to cross FORDZ at or above 4000, then on track 314° to cross CORVE at or below 7000, then on track 027° to cross LOALA at or above 4000, thence....
TAKEOFF RUNWAYS 27L/R:	Climb on heading 276° to 1146, then on heading 276° or as assigned for RADAR vectors to cross LOALA at or above 4000, thence....
.....on track 352° to TRMML, then on (transition). Maintain 17000 or as assigned by ATC, expect filed altitude 10 minutes after departure.	
GNZOE TRANSITION (TRMML3.GNZOE)	

ZETTR THREE DEPARTURE (RNAV) Departure Routes

DETROIT, MICHIGAN

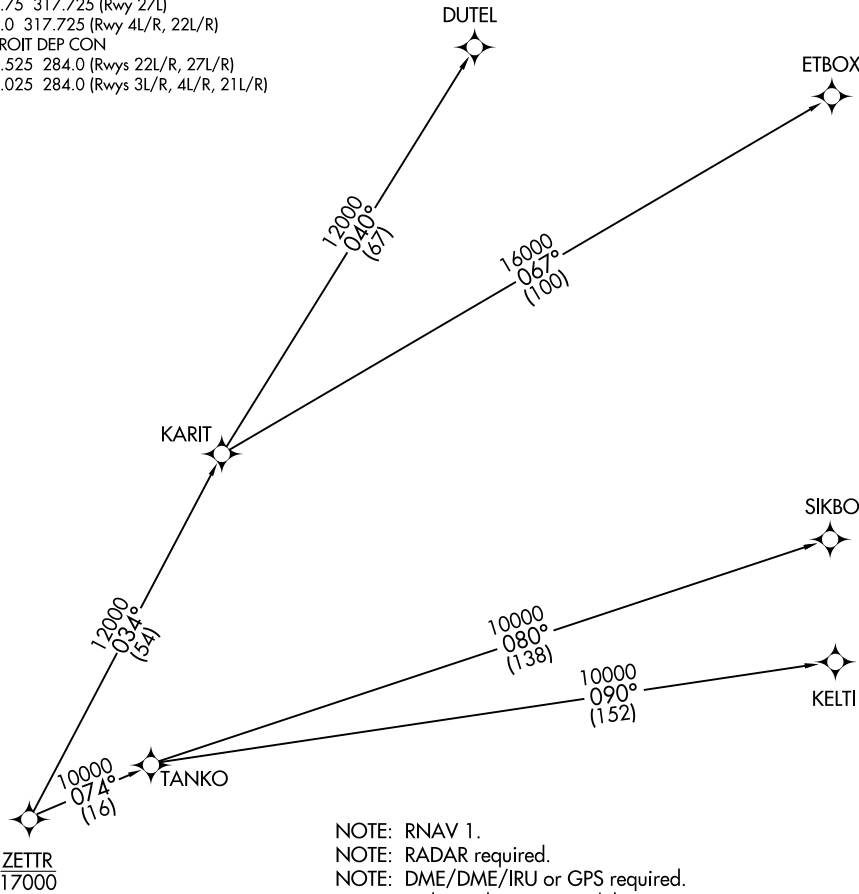


EC-1, 22 FEB 2024 to 21 MAR 2024

EC-1, 22 FEB 2024 to 21 MAR 2024

D-ATIS 118.125
CLNC DEL 120.65
CPDLC
GND CON
121.8 (NW) 119.45 (NE)
132.725 (SW) 119.25 (SE)
METRO TOWER
118.4 317.725 (Rwys 3L/R, 21L/R, 27R)
128.75 317.725 (Rwy 27L)
135.0 317.725 (Rwy 4L/R, 22L/R)
DETROIT DEP CON
125.525 284.0 (Rwys 22L/R, 27L/R)
132.025 284.0 (Rwys 3L/R, 4L/R, 21L/R)

TOP ALTITUDE:
17000



(NARRATIVE CONTINUED ON FOLLOWING PAGE) NOTE: Chart not to scale.

ZETTR THREE DEPARTURE (RNAV)



DEPARTURE ROUTE DESCRIPTION

NOTE: See additional requirements in RNAV departure AAUP.

TAKEOFF RUNWAY 3L: Climb on heading 036° to 1146, then direct to cross DCATS at or below 7000, then on track 034° to cross NILSN at or below 11000, then on track 043° to cross FLOKA at or above 4000, thence....

TAKEOFF RUNWAY 3R: Climb on heading 036° to 1146, then direct BURPZ, then on track 034° to cross DCATS at or below 7000, then on track 034° to cross NILSN at or below 11000, then on track 043° to cross FLOKA at or above 4000, thence....

TAKEOFF RUNWAY 4L: Climb on heading 036° to 1146, then direct MINDY, then on track 038° to cross KKELL at or below 7000, then on track 039° to cross NILSN at or below 11000, then on track 043° to cross FLOKA at or above 4000, thence....

TAKEOFF RUNWAY 4R: Climb on heading 036° to 1146, then direct to cross KKELL at or below 7000, then on track 039° to cross NILSN at or below 11000, then on track 043° to cross FLOKA at or above 4000, thence....

TAKEOFF RUNWAY 21L: Climb on heading 216° to intercept course 173° to cross WINRS at or above 2500 and at or below 230K, then on track 094° to cross USSIE at or above 4000, then on track 084° to cross SUURF at or below 7000, then on track 036° to TUURF, then on track 019° to cross FLOKA at or above 4000, thence....

TAKEOFF RUNWAY 21R: Climb on heading 216° to intercept course 175° to cross WINRS, at or above 2500 and at or below 230K, then on track 094° to cross USSIE at or above 4000, then on track 084° to cross SUURF at or below 7000, then on track 036° to TUURF, then on track 019° to cross FLOKA at or above 4000, thence....

TAKEOFF RUNWAY 22L: Climb on heading 216° to intercept course 251° to cross FORDZ at or above 4000, then on track 314° to cross CORVE at or below 7000, then on track 026° to FRBRD, then on track 049° to DINGL, then on track 063° to cross FLOKA at or above 4000, thence....

TAKEOFF RUNWAY 22R: Climb on heading 216° to intercept course 250° to cross FORDZ at or above 4000, then on track 314° to cross CORVE at or below 7000, then on track 026° to FRBRD, then on track 049° to DINGL, then on track 063° to cross FLOKA at or above 4000, thence....

TAKEOFF RUNWAYS 27L/R: Climb on heading 276° to 1146, then on heading 276° or as assigned for RADAR vectors to cross FLOKA at or above 4000, thence....

....on track 049° to cross ZETTR at or below 17000, then on (transition). Maintain 17000 or as assigned by ATC, expect filed altitude 10 minutes after departure.

- DUTEL TRANSITION (ZETTR3.DUTEL):
- ETBOX TRANSITION (ZETTR3.ETBOX):
- KELTI TRANSITION (ZETTR3.KELTI):
- SIKBO TRANSITION (ZETTR3.SIKBO):
- TANKO TRANSITION (ZETTR3.TANKO):

EC-1, 22 FEB 2024 to 21 MAR 2024

EC-1, 22 FEB 2024 to 21 MAR 2024