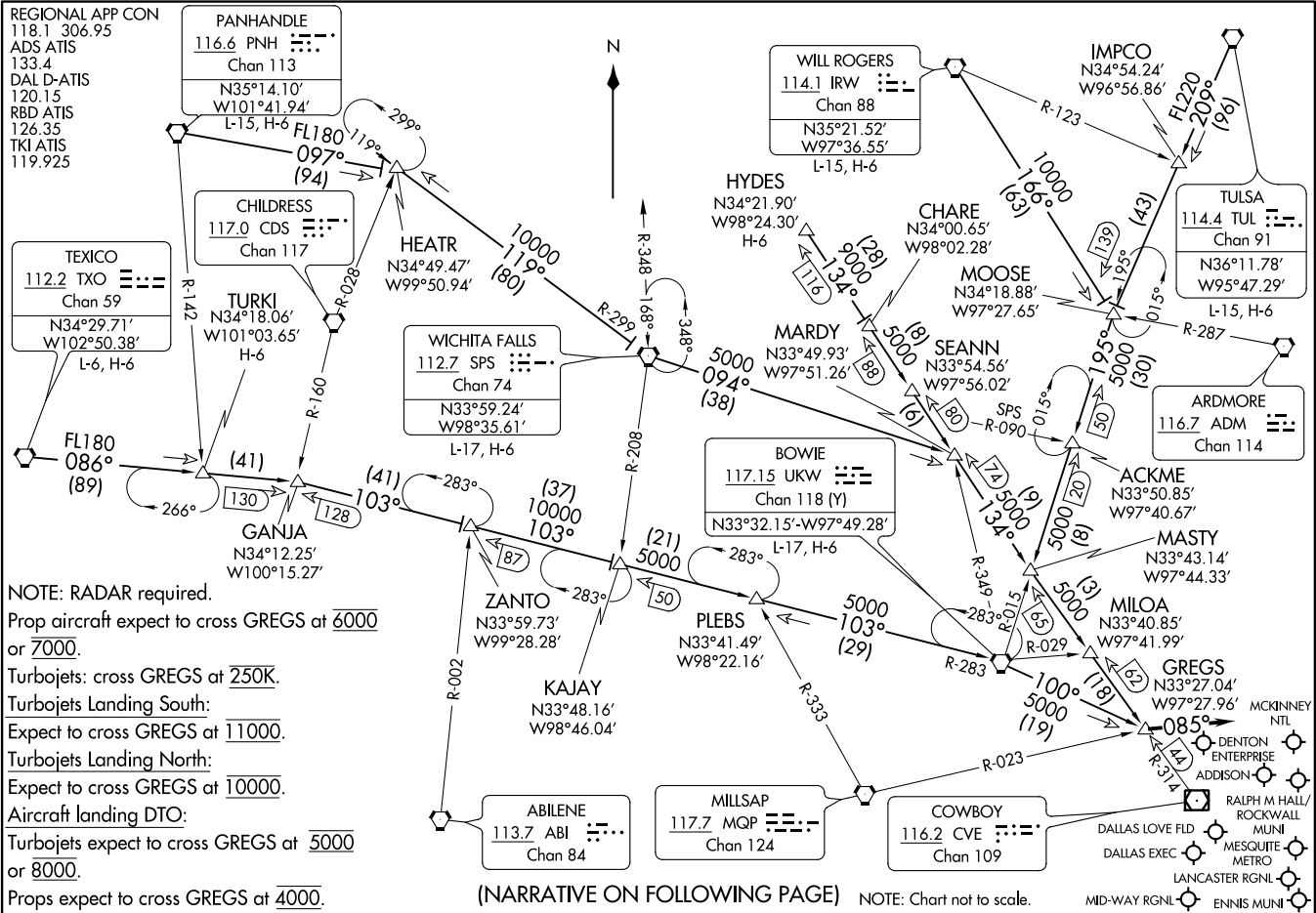


GREGS ONE ARRIVAL  
(GREGS, GREGS 1) 14JUL22

(GREGS, GREGS 1) 22195  
GREGS ONE ARRIVAL



NOTE: RADAR required.  
Prop aircraft expect to cross GREGS at 6000  
or 7000.  
Turbojets: cross GREGS at 250K.  
Turbojets Landing South:  
Expect to cross GREGS at 11000.  
Turbojets Landing North:  
Expect to cross GREGS at 10000.  
Aircraft landing DTO:  
Turbojets expect to cross GREGS at 5000  
or 8000.  
Props expect to cross GREGS at 4000.

(NARRATIVE ON FOLLOWING PAGE)

NOTE: Chart not to scale.

DALLAS-FORT WORTH, TEXAS

DALLAS-FORT WORTH, TEXAS

ARRIVAL DESCRIPTION

BOWIE TRANSITION (UKW.GREGS1): From over UKW VORTAC on UKW R-100 to GREGS. Thence. . . .

HYDES TRANSITION (HYDES.GREGS1): From over HYDES on CVE R-314 to GREGS. Thence. . . .

PANHANDLE TRANSITION (PNH.GREGS1): From over PNH VORTAC on PNH R-097 to HEATR, then on SPS R-299 to SPS VORTAC, then on SPS R-094 to MARDY, then on CVE R-314 to GREGS. Thence. . . .

TEXICO TRANSITION (TXO.GREGS1): From over TXO VORTAC on TXO R-086 to GANJA, then on UKW R-283 to UKW VORTAC, then on UKW R-100 to GREGS. Thence. . . .

TULSA TRANSITION (TUL.GREGS1): From over TUL VORTAC on TUL R-209 to MOOSE, then on UKW R-015 to MASTY, then on CVE R-314 to GREGS. Thence. . . .

TURKI TRANSITION (TURKI.GREGS1): From over TURKI on TXO R-086 to GANJA, then on UKW R-283 to UKW VORTAC, then on UKW R-100 to GREGS. Thence. . . .

WICHITA FALLS TRANSITION (SPS.GREGS1): From over SPS VORTAC on SPS R-094 to MARDY, then on CVE R-314 to GREGS. Thence. . . .

WILL ROGERS TRANSITION (IRW.GREGS1): From over IRW VORTAC on IRW R-166 to MOOSE, then on UKW R-015 to MASTY, then on CVE R-314 to GREGS. Thence. . . .

. . . .from over GREGS, depart GREGS heading 085°. Expect RADAR vectors to final approach course.

SC-2, 22 FEB 2024 to 21 MAR 2024

SC-2, 22 FEB 2024 to 21 MAR 2024

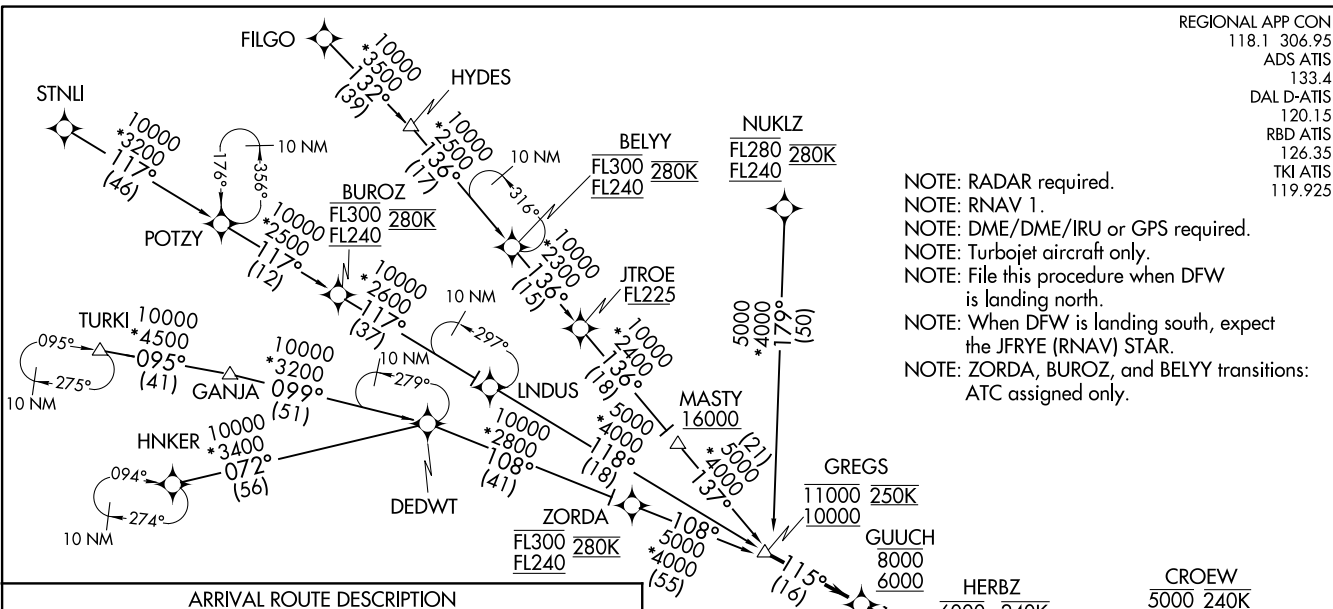
HERBZ ONE ARRIVAL (RNAV)  
(GREGS.HERBZ1) 17JUN21

(GREGS.HERBZ1) 21224  
HERBZ ONE ARRIVAL (RNAV)

A1-106 (FAA)

REGIONAL APP CON  
118.1 306.95  
ADS ATIS  
133.4  
DAL D-ATIS  
120.15  
RBD ATIS  
126.35  
TKI ATIS  
119.925

NOTE: RADAR required.  
NOTE: RNAV 1.  
NOTE: DME/DME/IRU or GPS required.  
NOTE: Turbojet aircraft only.  
NOTE: File this procedure when DFW is landing north.  
NOTE: When DFW is landing south, expect the JFRYE (RNAV) STAR.  
NOTE: ZORDA, BUROZ, and BELYY transitions: ATC assigned only.



ARRIVAL ROUTE DESCRIPTION

- BELYY TRANSITION (BELYY.HERBZ1)
- BUROZ TRANSITION (BUROZ.HERBZ1)
- FILGO TRANSITION (FILGO.HERBZ1)
- HNKER TRANSITION (HNKER.HERBZ1)
- HYDES TRANSITION (HYDES.HERBZ1)
- NUKLZ TRANSITION (NUKLZ.HERBZ1)
- STNLI TRANSITION (STNLI.HERBZ1)
- TURKI TRANSITION (TURKI.HERBZ1)
- ZORDA TRANSITION (ZORDA.HERBZ1)

LANDING ALL AIRPORTS: From GREGS on track 115° to cross GUUCH between 6000 and 8000, then on track 115° to cross HERBZ at 6000 and at 240K, then on track 113°. Expect RADAR vectors to final approach course.

NOTE: Chart not to scale.

DALLAS, TEXAS

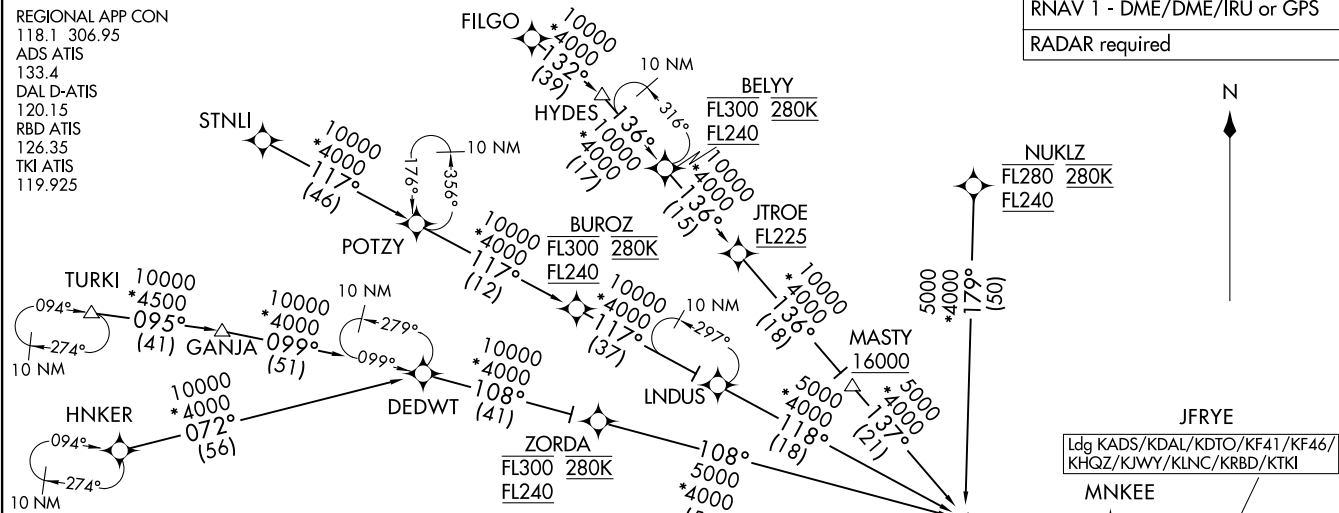
DALLAS, TEXAS

JFRYE FIVE ARRIVAL (RNAV)  
 (GREGS.JFRYE5) 14JUL22

(GREGS.JFRYE5) 22195  
 JFRYE FIVE ARRIVAL (RNAV)

REGIONAL APP CON  
 118.1 306.95  
 ADS ATIS  
 133.4  
 DAL D-ATIS  
 120.15  
 RBD ATIS  
 126.35  
 TKI ATIS  
 119.925

RNAV 1 - DME/DME/IRU or GPS  
 RADAR required



**ARRIVAL ROUTE DESCRIPTION**

- BELY TRANSITION (BELY.JFRYE5)
- BUROZ TRANSITION (BUROZ.JFRYE5)
- FILGO TRANSITION (FILGO.JFRYE5)
- HNKER TRANSITION (HNKER.JFRYE5)
- HYDES TRANSITION (HYDES.JFRYE5)
- NUKLZ TRANSITION (NUKLZ.JFRYE5)
- STNLI TRANSITION (STNLI.JFRYE5)
- TURKI TRANSITION (TURKI.JFRYE5)
- ZORDA TRANSITION (ZORDA.JFRYE5)

**LANDING ALL AIRPORTS:** From GREGS on track 090° to MNKEE, then on track 116° to JFRYE, then on track 143°. Expect RADAR vectors to final approach course.

- NOTE: Jet aircraft only.
- NOTE: When DFW is landing north, expect the HERBZ RNAV STAR.
- NOTE: ZORDA, BUROZ, and BELY Enroute Transitions - ATC assigned only.

NOTE: Chart not to scale.

AL-106 (FAA)

DALLAS, TEXAS

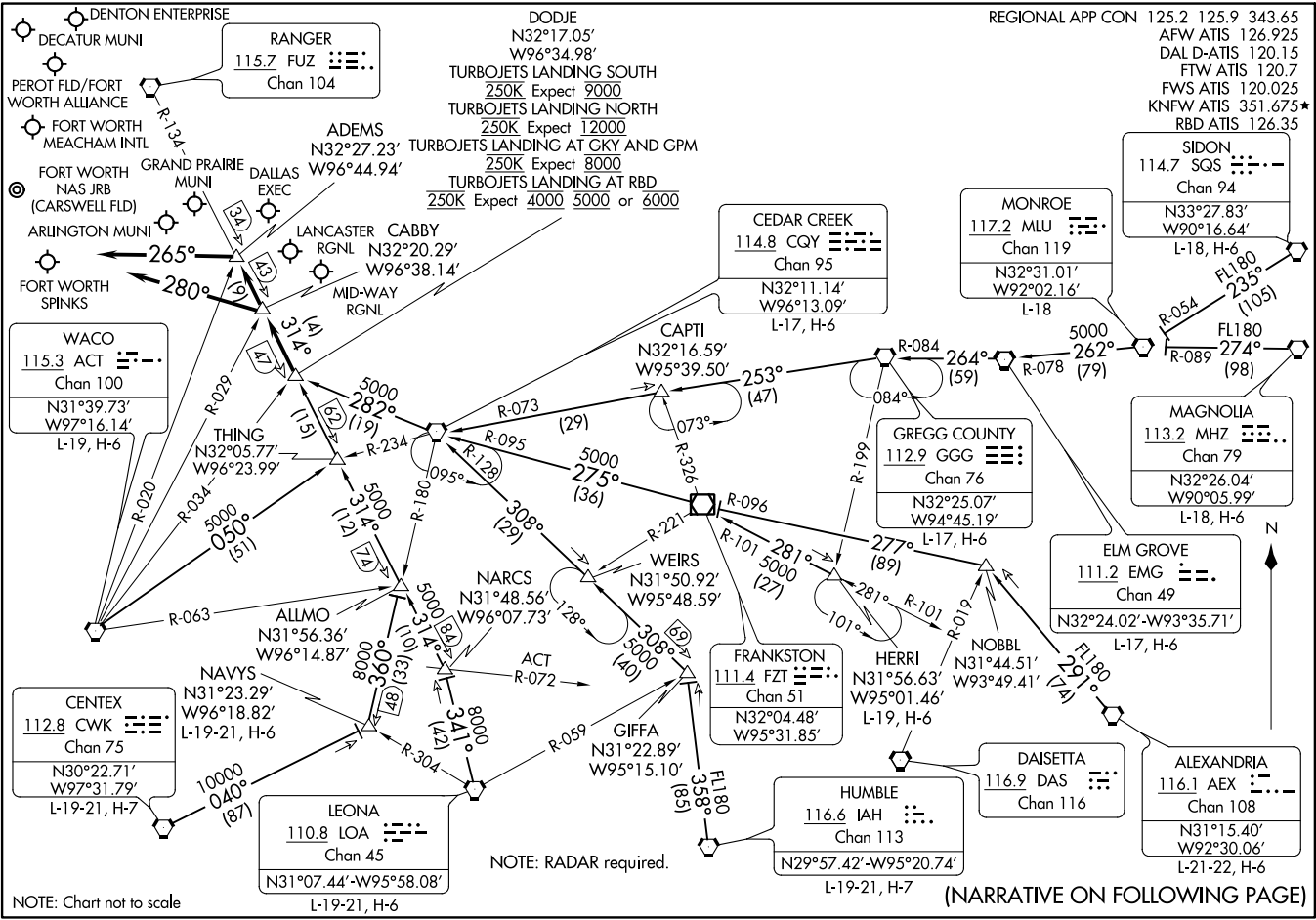
DALLAS, TEXAS

REGIONAL APP CON 125.2 125.9 343.65  
 AFW ATIS 126.925  
 DAL D-ATIS 120.15  
 FTW ATIS 120.7  
 FWS ATIS 120.025  
 KNFW ATIS 351.675\*  
 RBD ATIS 126.35

(DODJIE:DODJIE6) 23054  
 DODJIE SIX ARRIVAL

AL-6918 (FAA)

DALLAS-FORT WORTH, TEXAS



(DODJIE:DODJIE6) 21MAY20  
 DODJIE SIX ARRIVAL

DALLAS-FORT WORTH, TEXAS

NOTE: RADAR required.

(NARRATIVE ON FOLLOWING PAGE)

ARRIVAL ROUTE DESCRIPTION

ALEXANDRIA TRANSITION (AEX.DODJE6): From over AEX VORTAC on AEX R-291 to NOBBL, then on FZT R-096 to FZT VOR/DME, then on FZT R-275 and CQY R-095 to CQY VORTAC, then on CQY R-282 to DODJE. Thence . . . .

CEDAR CREEK TRANSITION (CGY.DODJE6): From over CQY VORTAC on CQY R-282 to DODJE. Thence. . . .

CENTEX TRANSITION (CWK.DODJE6): From over CWK VORTAC on CWK R-040 to NAVYS, then on CQY R-180 to ALLMO, then on FUZ R-134 to DODJE. Thence . . . .

ELM GROVE TRANSITION (EMG.DODJE6): From over EMG VORTAC on EMG R-264 and GGG R-084 to GGG VORTAC, then on GGG R-253 and CQY R-073 to CAPTI, then on CQY R-073 to CQY VORTAC, then on CQY R-282 to DODJE. Thence . . . .

GREGG COUNTY TRANSITION (GGG.DODJE6): From over GGG VORTAC on GGG R-253 and CQY R-073 to CAPTI, then on CQY R-073 to CQY VORTAC, then on CQY R-282 to DODJE. Thence . . . .

HERRI TRANSITION (HERRI.DODJE6): From over HERRI on FZT R-101 to FZT VOR/DME, then on FZT R-275 and CQY R-095 to CQY VORTAC, then on CQY R-282 to DODJE. Thence . . . .

HUMBLE TRANSITION (IAH.DODJE6): From over IAH VORTAC on IAH R-358 to GIFFA, then on CQY R-128 to CQY VORTAC, then on CQY R-282 to DODJE. Thence . . . .

LEONA TRANSITION (LOA.DODJE6): From over LOA VORTAC on LOA R-341 to NARCS, then on FUZ R-134 to DODJE. Thence . . . .

MAGNOLIA TRANSITION (MHZ.DODJE6): From over MHZ VORTAC on MHZ R-274 and MLU R-089 to MLU VORTAC, then on MLU R-262 and EMG R-078 to EMG VORTAC, then on EMG R-264 and GGG R-084 to GGG VORTAC, then on GGG R-253 and CQY R-073 to CAPTI, then on CQY R-073 to CQY VORTAC, then on CQY R-282 to DODJE. Thence . . . .

MONROE TRANSITION (MLU.DODJE6): From over MLU VORTAC on MLU R-262 and EMG R-078 to EMG VORTAC, then on EMG R-264 and GGG R-084 to GGG VORTAC, then on GGG R-253 and CQY R-073 to CAPTI, then on CQY R-073 to CQY VORTAC, then on CQY R-282 to DODJE. Thence . . . .

NAVYS TRANSITION (NAVYS.DODJE6): From over NAVYS on CQY R-180 to ALLMO, then on FUZ R-134 to DODJE. Thence . . . .

SIDON TRANSITION (SQS.DODJE6): From over SQS VORTAC on SQS R-235 and MLU R-054 to MLU VORTAC, then on MLU R-262 and EMG R-078 to EMG VORTAC, then on EMG R-264 and GGG R-084 to GGG VORTAC, then on GGG R-253 and CQY R-073 to CAPTI, then on CQY R-073 to CQY VORTAC, then on CQY R-282 to DODJE. Thence . . . .

WACO TRANSITION (ACT.DODJE6): From over ACT VORTAC on ACT R-050 and CQY R-234 to THING, then on FUZ R-134 to DODJE. Thence . . . .

. . . . from over DODJE on FUZ R-134 to CABBYP or ADEMS (when directed by ATC).  
Depart CABBYP heading 280°. Expect RADAR vectors to final approach course.  
Depart ADEMS heading 265°. Expect RADAR vectors to final approach course.

LIKES THREE ARRIVAL (RNAV)  
(SLUGG.LIKES3) 26MARI6

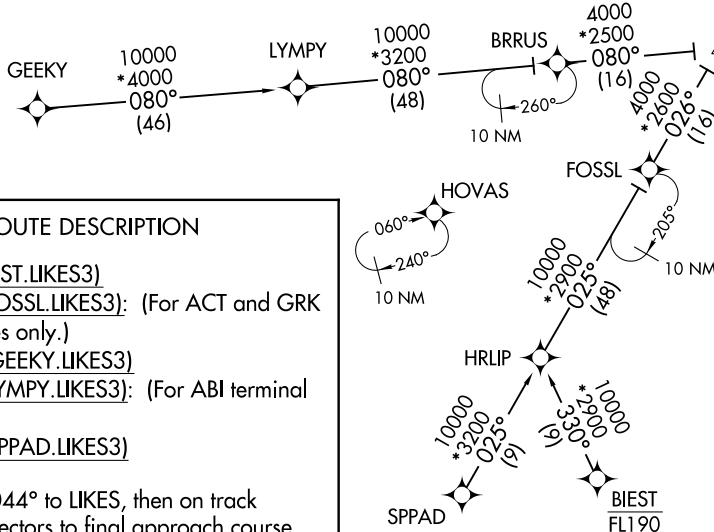
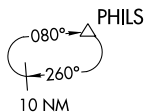
LIKES THREE ARRIVAL (RNAV)  
(SLUGG.LIKES3) 23222

AL-6918 (FAA)

FORT WORTH, TEXAS

REGIONAL APP CON  
135.975 125.8 257.95  
AFW ATIS  
126.925  
FTW ATIS  
120.7  
KNFW ATIS\*  
351.675

NOTE: RADAR required.  
NOTE: RNAV 1.  
NOTE: DME/DME/IRU or GPS required.



ARRIVAL ROUTE DESCRIPTION

- BIEST TRANSITION (BIEST.LIKES3)
- FOSSL TRANSITION (FOSSL.LIKES3): (For ACT and GRK terminal area departures only.)
- GEEKY TRANSITION (GEEKY.LIKES3)
- LYMPY TRANSITION (LYMPY.LIKES3): (For ABI terminal area departures only.)
- SPPAD TRANSITION (SPPAD.LIKES3)

From SLUGG on track 044° to LIKES, then on track 044°. Expect RADAR vectors to final approach course.

SLUGG  
VERTICAL NAVIGATION  
PLANNING INFORMATION  
TURBOJET:  
When DFW is in south flow  
Expect 8000  
When DFW is in north flow  
Expect 6000  
PROPS:  
Expect 5000

NOTE: Chart not to scale.

FORT WORTH, TEXAS

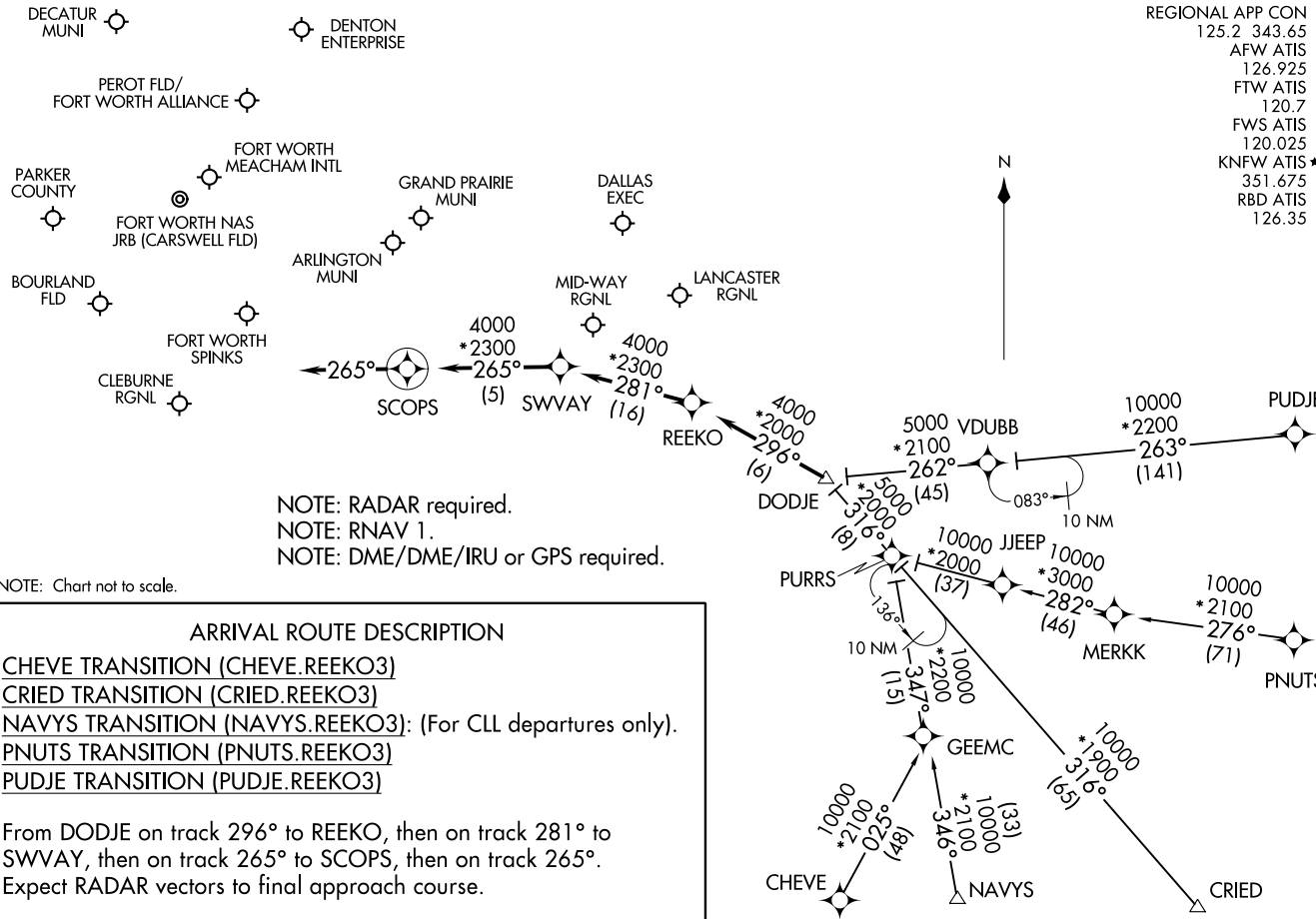
REEKO THREE ARRIVAL (RNAV)  
(DODJE.REEK03) 26MAY16

REEKO THREE ARRIVAL (RNAV)  
(DODJE.REEK03) 23Z22

AL-6918 (FAA)

FORT WORTH, TEXAS

REGIONAL APP CON  
125.2 343.65  
AFW ATIS  
126.925  
FTW ATIS  
120.7  
FWS ATIS  
120.025  
KNFW ATIS\*  
351.675  
RBD ATIS  
126.35



NOTE: RADAR required.  
NOTE: RNAV 1.  
NOTE: DME/DME/IRU or GPS required.

NOTE: Chart not to scale.

ARRIVAL ROUTE DESCRIPTION

- CHEVE TRANSITION (CHEVE.REEK03)
- CRIED TRANSITION (CRIED.REEK03)
- NAVYS TRANSITION (NAVYS.REEK03): (For CLL departures only).
- PNUTS TRANSITION (PNUTS.REEK03)
- PUDJE TRANSITION (PUDJE.REEK03)

From DODJE on track 296° to REEKO, then on track 281° to SWVAY, then on track 265° to SCOPS, then on track 265°.  
Expect RADAR vectors to final approach course.

FORT WORTH, TEXAS



SASIE SEVEN ARRIVAL  
(SASIE: SASIE7) 29DEC22

(SASIE: SASIE7) 22363  
SASIE SEVEN ARRIVAL

AL-6918 (FAA)

DALLAS-FORT WORTH, TEXAS

REGIONAL APP CON  
124.3 282.275  
ADS ATIS  
133.4  
AFW ATIS  
126.925  
FTW ATIS  
120.7  
FWS ATIS  
120.025  
KNFW ATIS\*  
351.675

SASIE  
N33°27.01'  
W96°35.80'

WEST SATELLITE TURBOJETS  
LANDING NORTH Expect 10000  
WEST SATELLITE TURBOJETS  
LANDING SOUTH Expect 11000  
LANDING ADS:  
TURBOJETS Expect 6000  
PROPS Expect 5000 or 6000.

DECATUR MUNI

DENTON ENTERPRISE

PEROT FLD/FORT WORTH ALLIANCE

FORT WORTH MEACHAM INTL

FORT WORTH NAS JBR (CARSWELL FLD)

PARKER COUNTY

BOURLAND FLD

CLEBURNE RGNL

ARDMORE  
116.7 ADM  
Chan 114  
N34°12.70'  
W97°10.09'  
L-17, H-6



BONHAM  
114.6 BYP  
Chan 93  
N33°32.25'  
W96°14.05'  
L-17, H-6

TULSA  
114.4 TUL  
Chan 91  
N36°11.78'  
W95°47.29'  
L-15, H-6

BIRLE  
N34°17.64'  
W95°26.78'

GAATZ  
N33°54.23'  
W95°51.31'

CAINE  
N33°38.95'  
W96°23.23'

MAMEE  
N34°28.94'  
W95°14.84'

ROBEY  
N33°42.02'  
W95°41.34'

MONTE  
N33°32.41'  
W95°53.71'

PARIS  
113.6 PRX  
Chan 83  
N33°32.54'  
W95°26.90'  
L-17

KOMMA  
N35°00.88'  
W94°40.66'

RICH MOUNTAIN  
113.5 PGO  
Chan 82

GREGG COUNTY  
112.9 GGG  
Chan 76

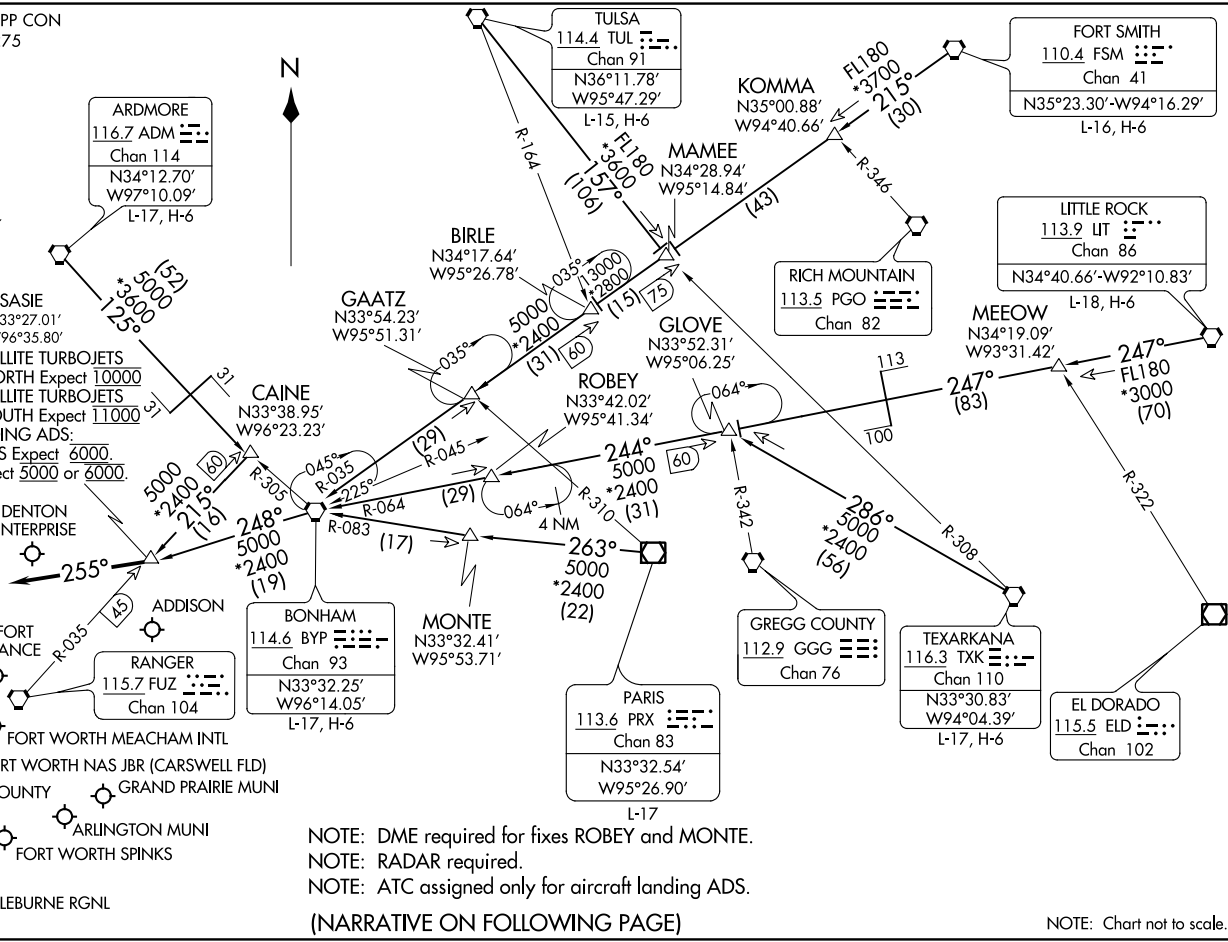
TEXARKANA  
116.3 TXK  
Chan 110  
N33°30.83'  
W94°04.39'  
L-17, H-6

FORT SMITH  
110.4 FSM  
Chan 41  
N35°23.30'-W94°16.29'  
L-16, H-6

LITTLE ROCK  
113.9 LIT  
Chan 86  
N34°40.66'-W92°10.83'  
L-18, H-6

MEEOW  
N34°19.09'  
W93°31.42'

EL DORADO  
115.5 ELD  
Chan 102



NOTE: DME required for fixes ROBEY and MONTE.  
NOTE: RADAR required.  
NOTE: ATC assigned only for aircraft landing ADS.

(NARRATIVE ON FOLLOWING PAGE)

NOTE: Chart not to scale.

ARRIVAL ROUTE DESCRIPTION

ARDMORE TRANSITION (ADM.SASIE7): From over ADM VORTAC on ADM R-125 and BYP R-305 to CAINE, then on FUZ R-035 to SASIE. Thence . . . .

BONHAM TRANSITION (BYP.SASIE7): From over BYP VORTAC on BYP R-248 to SASIE. Thence . . . .

CAINE TRANSITION (CAINE.SASIE7): From over CAINE on FUZ VORTAC R-035 to SASIE. Thence . . . .

FORT SMITH TRANSITION (FSM.SASIE7): From over FSM VORTAC on FSM R-215 to MAMEE, then on BYP R-035 to BYP VORTAC, then on BYP R-248 to SASIE. Thence . . . .

LITTLE ROCK TRANSITION (LIT.SASIE7): From over LIT VORTAC on LIT R-247 to MEEOW, then on LIT R-247 and BYP R-064 to GLOVE, then on BYP R-064 to BYP VORTAC, then on BYP R-248 to SASIE. Thence . . . .

PARIS TRANSITION (PRX.SASIE7): From over PRX VOR/DME on PRX R-263 and BYP R-083 to MONTE, then on BYP R-083 to BYP VORTAC, then on BYP R-248 to SASIE. Thence . . . .

TEXARKANA TRANSITION (TXK.SASIE7): From over TXK VORTAC on TXK R-286 to GLOVE, then on BYP R-064 to BYP VORTAC, then on BYP R-248 to SASIE. Thence . . . .

TULSA TRANSITION (TUL.SASIE7): From over TUL VORTAC on TUL R-157 to MAMEE, then on BYP R-035 to BYP VORTAC, then on BYP R-248 to SASIE. Thence . . . .

. . . . from SASIE, then on heading 255° or as assigned by ATC. Expect RADAR vectors to final approach course.

SC-2, 22 FEB 2024 to 21 MAR 2024

SC-2, 22 FEB 2024 to 21 MAR 2024

# TRUUK TWO ARRIVAL (RNAV)

DALLAS-FORT WORTH, TEXAS

REGIONAL APP CON  
 118.1 306.95  
 AFW ATIS  
 126.925  
 FTW ATIS  
 120.7  
 FWS ATIS  
 120.025  
 KNFW ATIS ★  
 351.675

NOTE: RADAR required.  
 NOTE: RNAV 1.  
 NOTE: DME/DME/IRU or GPS required.

SASIE  
 VERTICAL NAVIGATION  
 PLANNING INFORMATION

TURBOJET NORTH FLOW:

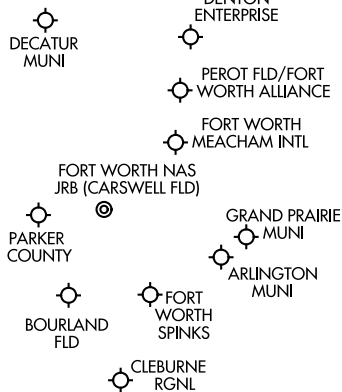
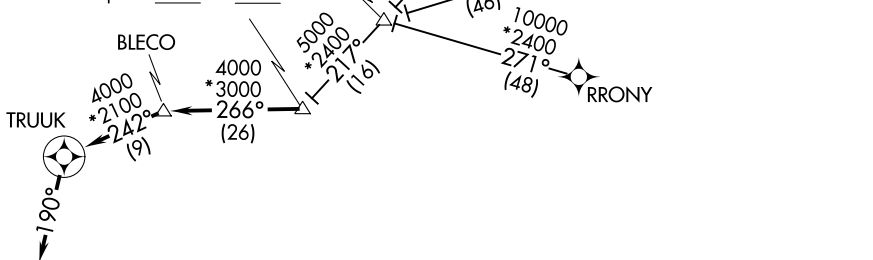
Expect 10000

TURBOJET SOUTH FLOW:

Expect 11000

PROPS:

Expect 5000 or 6000



NOTE: Chart not to scale.

## ARRIVAL ROUTE DESCRIPTION

AXxee TRANSITION (AXxee.TRUUK2): (For aircraft filing FL230 and below).

HITUG TRANSITION (HITUG.TRUUK2)

PONY TRANSITION (PONY.TRUUK2)

RRNET TRANSITION (RRNET.TRUUK2)

RRONY TRANSITION (RRONY.TRUUK2): (For aircraft filing FL230 and below).

From SASIE on track 266° to BLECO, then on track 242° to TRUUK, then on track 190°. Expect RADAR vectors to final approach course.