

(AZALA4.AZALA) 21168

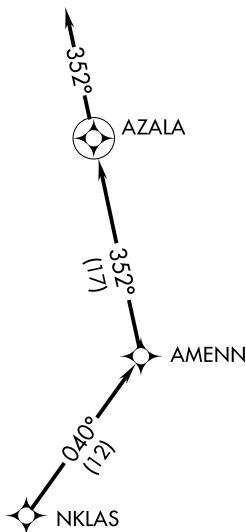
AL-28 (FAA)

DANIEL FLD (DNL)  
AUGUSTA, GEORGIA

# AZALA FOUR DEPARTURE (RNAV)

AUGUSTA TOWER ★  
118.7 (CTAF) 239.3  
AUGUSTA DEP CON ★  
126.8 270.3  
CTAF  
123.05

**TOP ALTITUDE:  
ASSIGNED BY ATC**



### TAKEOFF MINIMUMS

Rwys 5, 11: Standard.

Rwy 23: Standard with minimum climb of 337' per NM to 1300.

Rwy 29: Standard with minimum climb of 240' per NM to 1300.

NOTE: RADAR and GPS required.

NOTE: RNAV 1.

NOTE: Do not exceed 250K until advised by ATC.

NOTE: For prop aircraft during Masters golf tournament week only.

NOTE: Chart not to scale.



### DEPARTURE ROUTE DESCRIPTION

TAKEOFF RUNWAYS 5, 11, 23, 29: Climb on assigned heading for RADAR vectors to NKLAS. Then on depicted route to AZALA, then fly heading 352°, for RADAR vectors, thence. . .

. . . maintain altitude assigned by ATC. Expect clearance to filed altitude/flight level within 10 minutes after departure.

**AZALA FOUR DEPARTURE (RNAV)**  
(AZALA4.AZALA) 19JUL18

AUGUSTA, GEORGIA  
DANIEL FLD (DNL)

SE-4, 09 SEP 2021 to 07 OCT 2021

SE-4, 09 SEP 2021 to 07 OCT 2021

(CHATT6.CHATT) 21168

AL-28 (FAA)

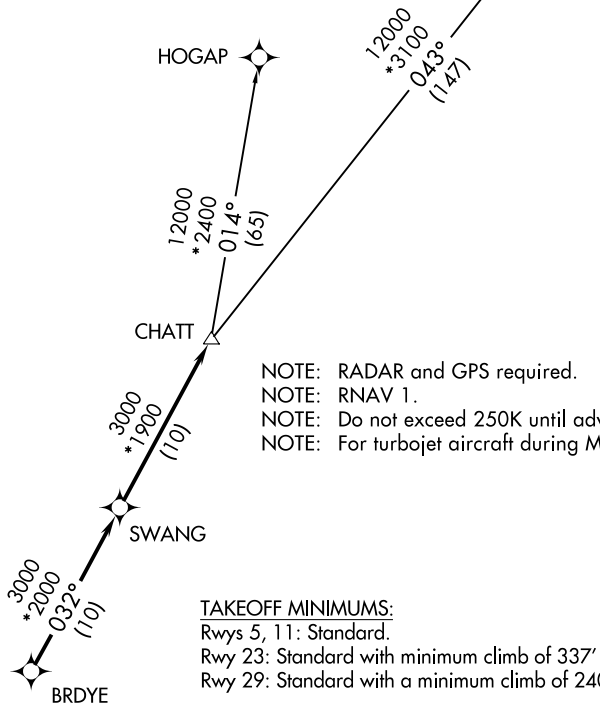
DANIEL FLD (DNL)  
AUGUSTA, GEORGIA

# CHATT SIX DEPARTURE (RNAV)

AUGUSTA DEP CON ★  
126.8 270.3  
CTAF  
123.05  
ASOS  
135.275

GREENSBORO  
GSO

**TOP ALTITUDE:  
ASSIGNED BY ATC**



- NOTE: RADAR and GPS required.
- NOTE: RNAV 1.
- NOTE: Do not exceed 250K until advised by ATC.
- NOTE: For turbojet aircraft during Masters golf tournament week.

TAKEOFF MINIMUMS:  
 Rwy 5, 11: Standard.  
 Rwy 23: Standard with minimum climb of 337' per NM to 1300.  
 Rwy 29: Standard with a minimum climb of 240' per NM to 1300.



NOTE: Chart not to scale.

## DEPARTURE ROUTE DESCRIPTION

TAKEOFF RUNWAYS 5, 11, 23, 29: Climb on assigned heading for RADAR vectors to BRDYE, then on depicted route to CHATT, thence. . . .

. . . .maintain altitude assigned by ATC. Expect clearance to filed altitude/flight level within 10 minutes after departure.

GREENSBORO TRANSITION (CHATT6.GSO)  
HOGAP TRANSITION (CHATT6.HOGAP)

# CHATT SIX DEPARTURE (RNAV)

(CHATT6.CHATT) 29MAR18

AUGUSTA, GEORGIA  
DANIEL FLD (DNL)

SE-4, 09 SEP 2021 to 07 OCT 2021

SE-4, 09 SEP 2021 to 07 OCT 2021

(MISTY6.HADOC) 21168

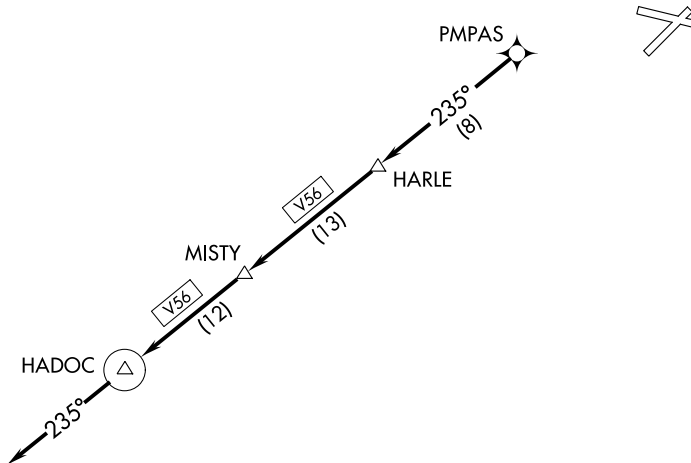
AL-28 (FAA)

DANIEL FLD (DNL)  
AUGUSTA, GEORGIA

# MISTY SIX DEPARTURE (RNAV)

AUGUSTA DEP CON ★  
126.8 270.3  
CTAF  
123.05

**TOP ALTITUDE:  
ASSIGNED BY ATC**



### TAKEOFF MINIMUMS

Rwys 5, 11: Standard.

Rwy 23: Standard with minimum climb of 337' per NM to 1300.

Rwy 29: Standard with minimum climb of 240' per NM to 1300.

NOTE: RADAR and GPS required.

NOTE: RNAV 1.

NOTE: Do not exceed 250K until advised by ATC.

NOTE: For turbojet aircraft only.

NOTE: For use during Masters golf tournament week only.

NOTE: Chart not to scale.



### DEPARTURE ROUTE DESCRIPTION

TAKEOFF RUNWAYS 5, 11, 23, 29: Climb on assigned heading for RADAR vectors to PMPAS. Then on depicted route to HADOC, then fly heading 235°, for RADAR vectors. Thence. . .

. . .maintain altitude assigned by ATC. Expect clearance to filed altitude/flight level within 10 minutes after departure.

**MISTY SIX DEPARTURE (RNAV)**  
(MISTY6.HADOC) 19JUL18

AUGUSTA, GEORGIA  
DANIEL FLD (DNL)

SE-4, 09 SEP 2021 to 07 OCT 2021

SE-4, 09 SEP 2021 to 07 OCT 2021

(NDINA5.NDINA) 21168

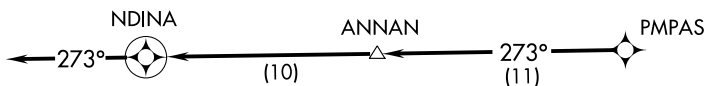
AL-28 (FAA)

DANIEL FLD (DNL)  
AUGUSTA, GEORGIA

# NDINA FIVE DEPARTURE (RNAV)

AUGUSTA TOWER ★  
118.7 (CTAF) 239.3  
AUGUSTA DEP CON ★  
126.8 270.3  
CTAF  
123.05

**TOP ALTITUDE:  
ASSIGNED BY ATC**



### TAKEOFF MINIMUMS

Rwys 5, 11: Standard.

Rwy 23: Standard with minimum climb of 337' per NM to 1300.

Rwy 29: Standard with minimum climb of 240' per NM to 1300.

NOTE: RADAR and GPS required.

NOTE: RNAV 1.

NOTE: Do not exceed 250K until advised by ATC.

NOTE: For prop aircraft during Masters golf tournament week only.

NOTE: Chart not to scale.



### DEPARTURE ROUTE DESCRIPTION

TAKEOFF RUNWAYS 5, 11, 23, 29: Climb on assigned heading for RADAR vectors to PMPAS. Then on depicted route to NDINA. Then fly heading 273°, for RADAR vectors, thence. . .

. . . maintain altitude assigned by ATC. Expect clearance to filed altitude/flight level within 10 minutes after departure.

## NDINA FIVE DEPARTURE (RNAV)

(NDINA5.NDINA) 19JUL18

AUGUSTA, GEORGIA  
DANIEL FLD (DNL)

SE-4, 09 SEP 2021 to 07 OCT 2021

SE-4, 09 SEP 2021 to 07 OCT 2021

(SAMMI4.SAMMI) 21168

AL-28 (FAA)

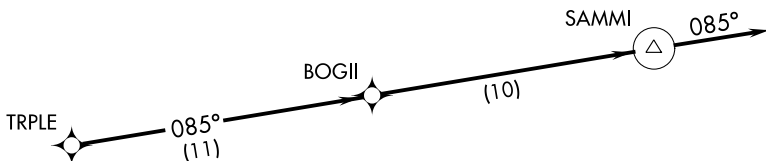
DANIEL FLD (DNL)  
AUGUSTA, GEORGIA

# SAMMI FOUR DEPARTURE (RNAV)

AUGUSTA DEP CON ★  
126.8 270.3  
CTAF  
123.05

**TOP ALTITUDE:  
ASSIGNED BY ATC**

NOTE: RADAR and GPS required.  
NOTE: RNAV 1.  
NOTE: Do not exceed 250K until advised by ATC.



### TAKEOFF MINIMUMS

Rwy 5, 11: Standard.  
Rwy 23: Standard with minimum climb of 337' per NM to 1300.  
Rwy 29: Standard with minimum climb of 240' per NM to 1300.



NOTE: Chart not to scale.



### DEPARTURE ROUTE DESCRIPTION

TAKEOFF RUNWAYS 5, 11, 23, 29: Climb on assigned heading for RADAR vectors to TRPLE. Then on depicted route to SAMMI. Then on heading 085° for RADAR vectors thence. . .

. . .maintain altitude assigned by ATC. Expect clearance to filed altitude/flight level within 10 minutes after departure.

# SAMMI FOUR DEPARTURE (RNAV)

(SAMMI4.SAMMI) 29MAR18

AUGUSTA, GEORGIA  
DANIEL FLD (DNL)

SE-4, 09 SEP 2021 to 07 OCT 2021

SE-4, 09 SEP 2021 to 07 OCT 2021