

WAAS CH 70419 W22A	APP CRS 222°	Rwy Idg TDZE Apt Elev	5675 4310 4314
--	------------------------	-----------------------------	---

RNAV (GPS) RWY 22

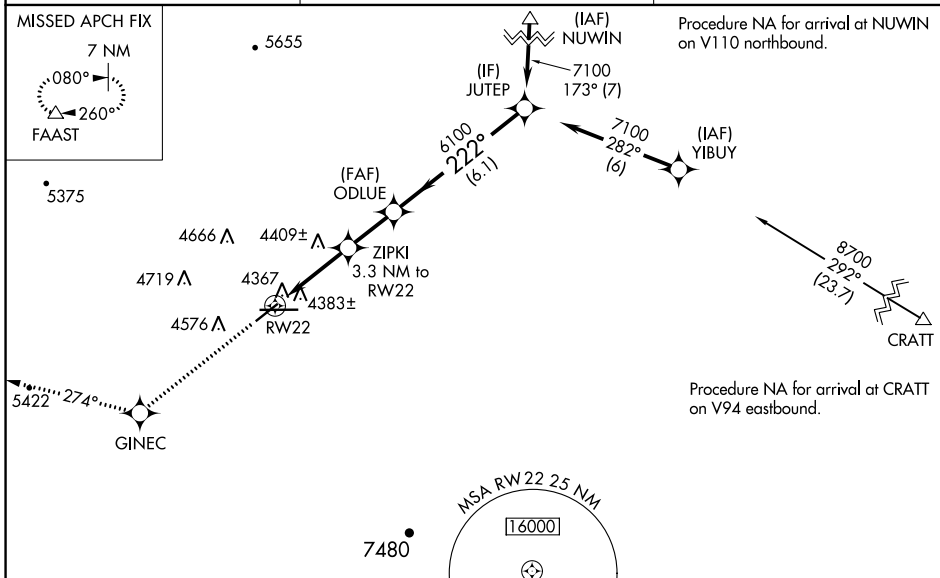
DEMING MUNI (DMN)

RNP APCH - GPS.

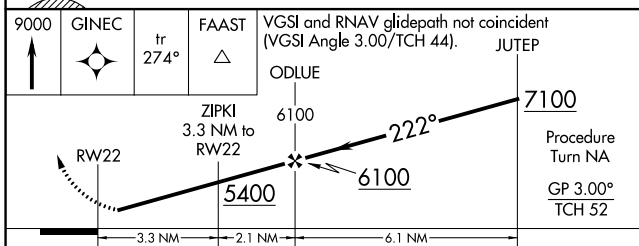
⚠ For uncompensated Baro-VNAV systems, LNAV/VNAV NA below -23°C or above 40°C. Baro-VNAV NA when using Las Cruces altimeter setting. When local altimeter setting not received, use Las Cruces altimeter setting and increase all DA 114 feet and all MDA 120 feet; increase LPV and LNAV/VNAV all Cats visibility ¼ mile, increase LNAV Cats C and D visibility ½ mile, increase Circling Cat B visibility ½ mile and Circling Cats C and D visibility ½ mile. Rwy 22 helicopter visibility reduction below 1 SM NA. Straight-in Rwy 22 NA at night, Circling Rwy 22, 26 NA at night.

MISSED APPROACH:
Climb to 9000 direct GINEC and on track 274° to FAAST and hold.

ASOS 118.525	ALBUQUERQUE CENTER 128.2 285.5	UNICOM 122.8 (CTAF) 0
------------------------	--	---------------------------------

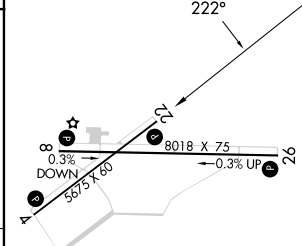


R-5115	9000	GINEC	tr 274°	FAAST	VGSI and RNAV glidepath not coincident (VGSI Angle 3.00/TCH 44).	JUTEP
--------	------	-------	---------	-------	--	-------



CATEGORY	A	B	C	D
LPV DA		4560-1	250 (300-1)	
LNAV/VNAV DA		4637-1¼	327 (400-1¼)	
LNAV MDA	4660-1	350 (400-1)		4660-1¼ 350 (400-1¼)
C CIRCLING	4820-1 506 (600-1)	4940-1 626 (700-1)	5020-2 706 (800-2)	5020-2¼ 706 (800-2¼)

ELEV 4314	TDZE 4310
-----------	-----------



MIRL Rwy 4-22
MIRL Rwy 8-26 0

SW-1, 22 FEB 2024 to 21 MAR 2024

SW-1, 22 FEB 2024 to 21 MAR 2024

WAAS CH 99319 W04A	APP CRS 042°	Rwy Idg TDZE Apt Elev	5675 4312 4314
--	------------------------	-----------------------------	---

RNAV (GPS) RWY 4

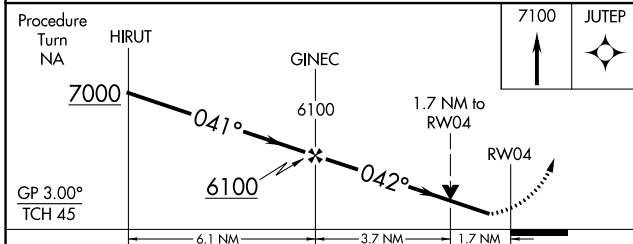
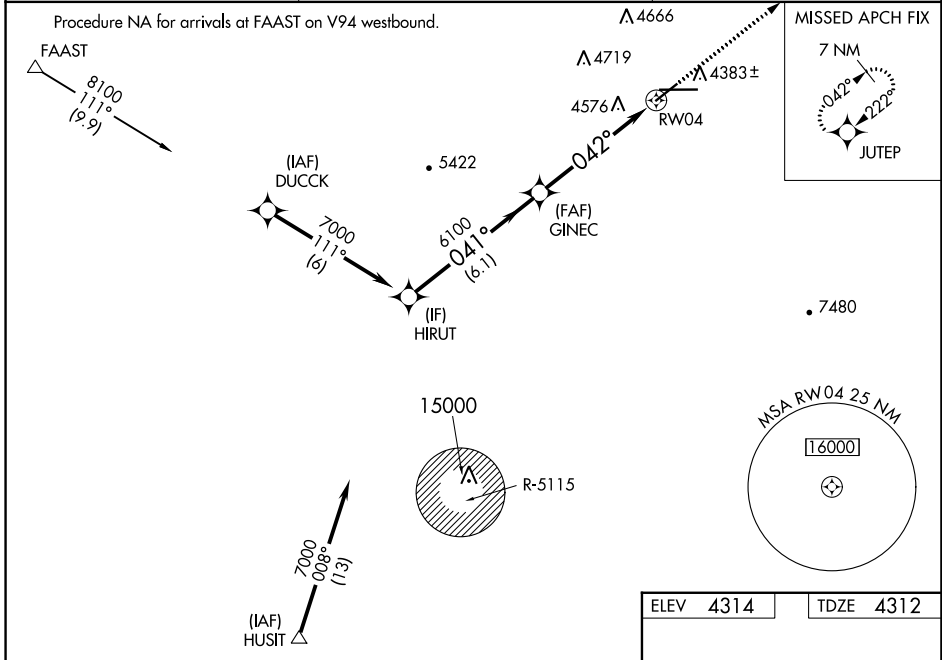
DEMING MUNI (DMN)

RNP APCH - GPS.

▼ For uncompensated Baro-VNAV systems, LNAV/VNAV NA below -23°C or above 40°C. VDP and Baro-VNAV NA when using Las Cruces altimeter setting. When local altimeter setting not received, use Las Cruces altimeter setting and increase all DA 114 feet and all MDA 120 feet; increase LPV and LNAV/VNAV all Cats visibility ½ mile, increase LNAV Cats C and D visibility ½ mile, increase Circling Cat B visibility ¼ mile and Cats C and D visibility ½ mile. Rwy 4 helicopter visibility reduction below ¾ SM NA. Circling Rwy 22, 26 NA at night.

MISSED APPROACH:
Climb to 7100 direct JUTEP and hold.

ASOS 118.525	ALBUQUERQUE CENTER 128.2 285.5	UNICOM 122.8 (CTAF)
------------------------	--	-------------------------------



ELEV 4314	TDZE 4312
-----------	-----------

0.3% DOWN
5675 X 1.60
8018 X 75
0.3% UP
042°

MIRL Rwy 4-22
MIRL Rwy 8-26

CATEGORY	A	B	C	D
LPV DA	4562-1 250 (300-1)			
LNAV/VNAV DA	4945-2¼ 633 (700-2¼)			
LNAV MDA	4880-1 568 (600-1)	4880-1½ 568 (600-1½)	4880-1¾ 568 (600-1¾)	4880-2 568 (600-2)
CIRCLING	4880-1 566 (600-1)	4940-1 626 (700-1)	5020-2 706 (800-2)	5020-2¼ 706 (800-2¼)

SW-1, 22 FEB 2024 to 21 MAR 2024

SW-1, 22 FEB 2024 to 21 MAR 2024

APP CRS	Rwy Idg	8018
080°	TDZE	4314
	Apt Elev	4314

RNAV (GPS) RWY 8

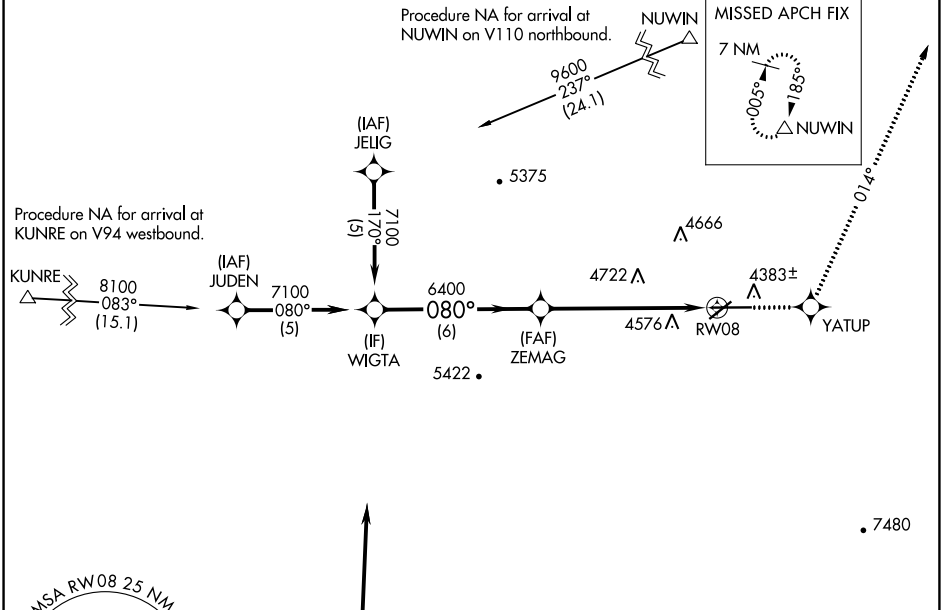
DEMING MUNI (DMN)

RNP APCH - GPS.

⚠ When local altimeter setting not received, use Las Cruces altimeter setting and increase all MDA 120 feet; increase LNAV Cats C and D visibility ¼ mile, Circling Cat B visibility ¼ mile and Circling Cats C and D visibility ½ mile. Rwy 8 helicopter visibility reduction below ¾ SM NA. Circling Rwy 22, 26 NA at night.

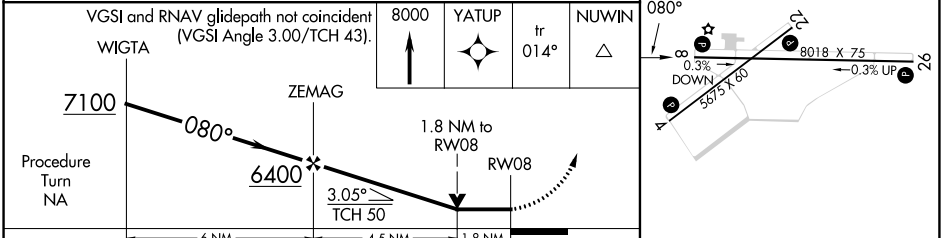
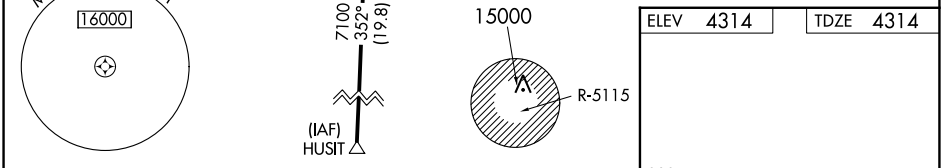
MISSED APPROACH:
Climb to 8000 direct YATUP and on track 014° to NUWIN and hold.

ASOS 118.525	ALBUQUERQUE CENTER 128.2 285.5	UNICOM 122.8 (CTAF) 0
------------------------	--	--

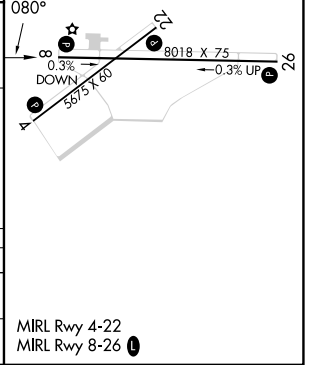


SW-1, 22 FEB 2024 to 21 MAR 2024

SW-1, 22 FEB 2024 to 21 MAR 2024



CATEGORY	A	B	C	D
LNAV MDA	4920-1	606 (700-1)	4920-1¾ 606 (700-1¾)	4920-2 606 (700-2)
CIRCLING	4920-1 606 (700-1)	4940-1 626 (700-1)	5020-2 706 (800-2)	5020-2¼ 706 (800-2¼)



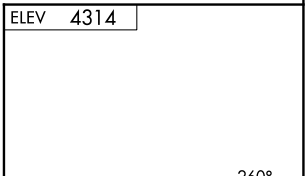
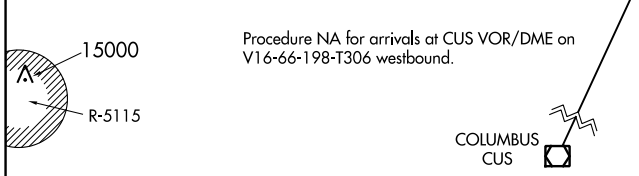
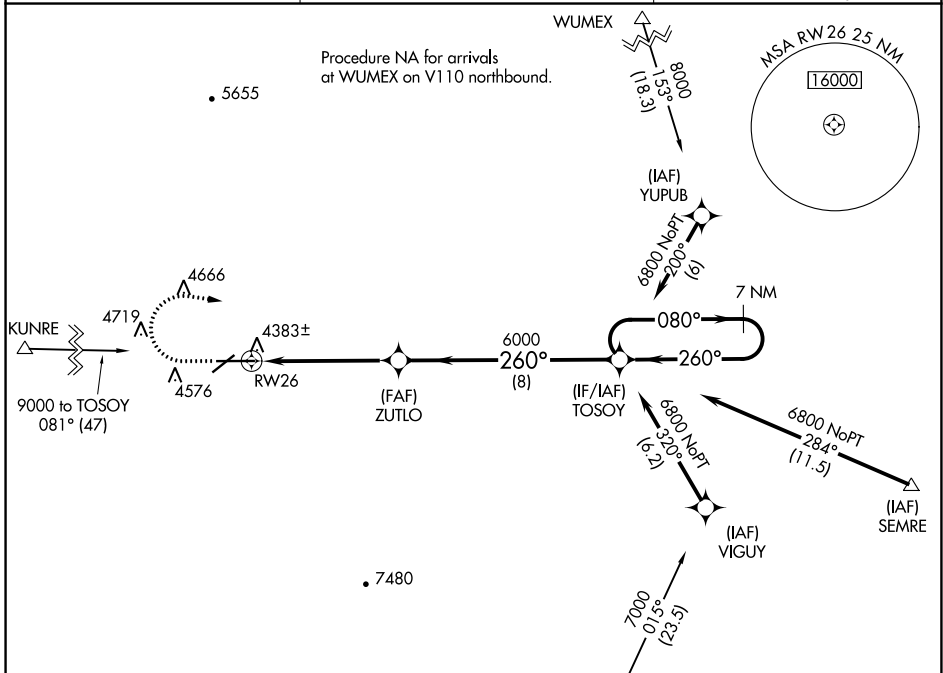
APP CRS 260°	Rwy Idg TDZE Apt Elev	N/A N/A 4314
------------------------	-----------------------------	---------------------------

RNAV (GPS)-A

DEMING MUNI (DMN)

RNP APCH - GPS.	MISSED APPROACH: Climb to 5600 then climbing right turn to 7200 direct TOSOY and hold.
<p>⚠ When local altimeter setting not received, use Las Cruces altimeter setting and increase all MDA 120 feet and increase Circling Cat C and D visibility ½ mile. Circling Rwy 22, 26 NA at night.</p>	

ASOS 118.525	ALBUQUERQUE CENTER 128.2 285.5	UNICOM 122.8 (CTAF)
------------------------	--	-------------------------------



5600	7200	TOSOY
↑	↷	✧
<p>RW26</p> <p>3.00° TCH 40</p> <p>6000</p> <p>260°</p> <p>080°</p> <p>260° 6800</p> <p>5.3 NM 8 NM</p>		

CATEGORY	A	B	C	D
CIRCLING	4820-1 506 (600-1)	4940-1 626 (700-1)	5020-2 706 (800-2)	5020-2 ¼ 706 (800-2 ¼)

MIRL Rwy 4-22	MIRL Rwy 8-26
---------------	---------------

SW-1, 22 FEB 2024 to 21 MAR 2024

SW-1, 22 FEB 2024 to 21 MAR 2024

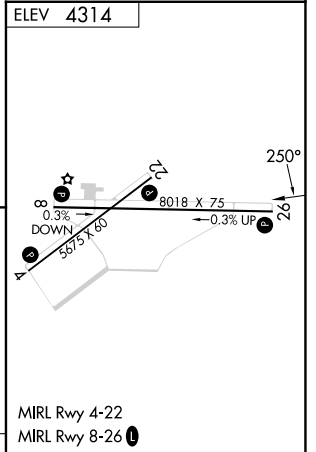
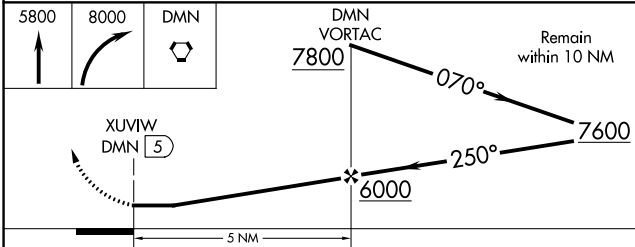
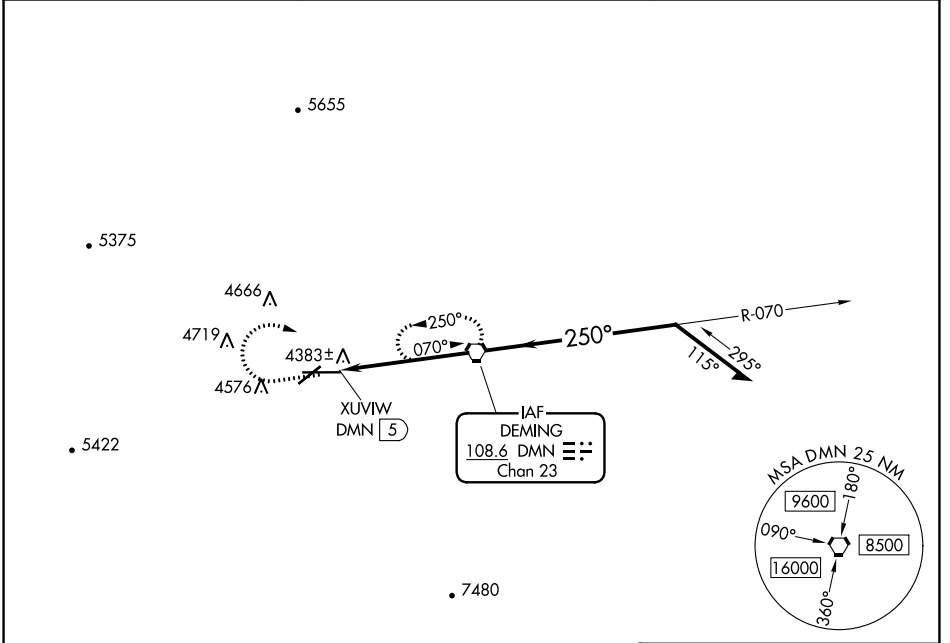
VORTAC DMN 108.6 Chan 23	APP CRS 250°	Rwy Idg TDZE Aprt Elev N/A N/A 4314
--	------------------------	---

VOR-B
DEMING MUNI (DMN)

⚠ Circling to Rwy 26 NA at night.

MISSED APPROACH: Climb to 5800 then climbing right turn to 8000 direct DMN VORTAC and hold. Continue to climb-in-hold to 8000.

ASOS 118.525	ALBUQUERQUE CENTER 128.2 285.5	UNICOM 122.8 (CTAF)
------------------------	--	-------------------------------



CATEGORY	A	B	C	D	FAF to MAP 5 NM					
CIRCLING	4820-1 506 (600-1)	4940-1 626 (700-1)	5020-2 706 (800-2)	5020-2¼ 706 (800-2¼)	Knots	60	90	120	150	180
					Min:Sec	5:00	3:20	2:30	2:00	1:40

SW-1, 22 FEB 2024 to 21 MAR 2024

SW-1, 22 FEB 2024 to 21 MAR 2024