

CHESTER, SOUTH CAROLINA

AL-5954 (FAA)

23166

NDB DCM <b>220</b>	APP CRS <b>340°</b>	Rwy ldg TDZE Apt Elev <b>5000</b> <b>648</b> <b>657</b>
-----------------------	------------------------	--

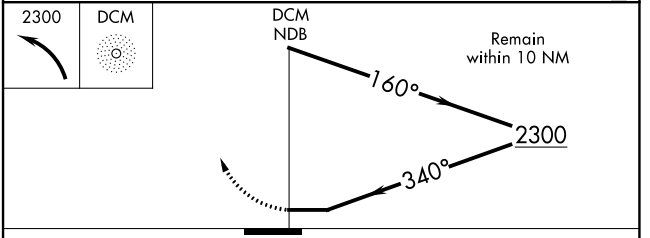
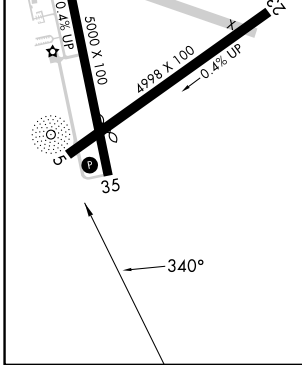
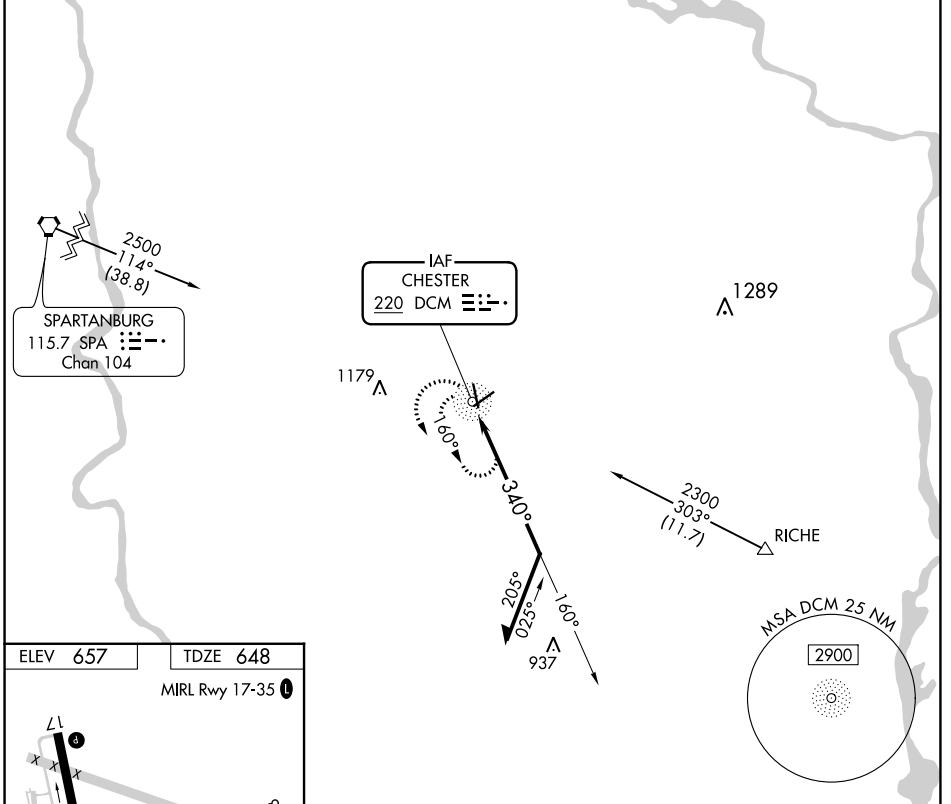
# NDB RWY 35

CHESTER CATAWBA RGNL (DCM)

**▼** Circling to Rwy 5-23 NA at night. Visibility reduction by helicopters NA. When local altimeter setting not received, use Rock Hill altimeter setting and increase all MDA 40 feet.

**▲** MISSED APPROACH: Climbing left turn to 2300 in DCM NDB holding pattern.

AWOS-3 <b>120.975</b>	CHARLOTTE APP CON <b>120.05 307.8</b>	UNICOM <b>122.7 (CTAF) 0</b>
--------------------------	--	---------------------------------



CATEGORY	A	B	C	D
S-35	1340-1	692 (700-1)	1340-2 692 (700-2)	1340-2¼ 692 (700-2¼)
CIRCLING	1340-1	683 (700-1)	1340-2 683 (700-2)	1480-2¾ 823 (900-2¾)

CHESTER, SOUTH CAROLINA  
Amdt 2A 20MAY21

34°47'N-81°12'W

CHESTER CATAWBA RGNL (DCM)  
**NDB RWY 35**

SE-2, 22 FEB 2024 to 21 MAR 2024

SE-2, 22 FEB 2024 to 21 MAR 2024

WAAS CH <b>93818</b> <b>W17A</b>	APP CRS <b>174°</b>	Rwy Idg TDZE Apt Elev	<b>5000</b> <b>657</b> <b>657</b>
--	------------------------	-----------------------------	---

# RNAV (GPS) RWY 17

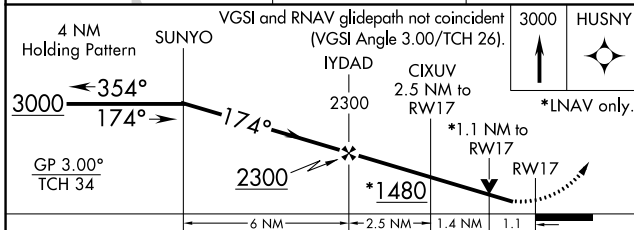
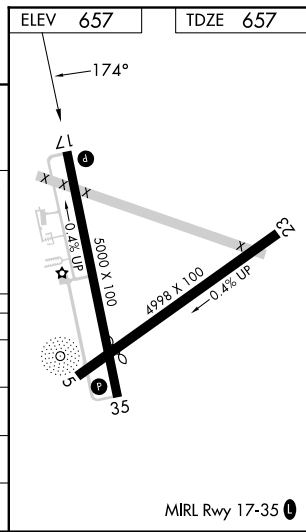
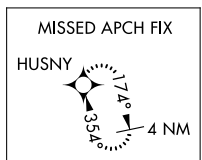
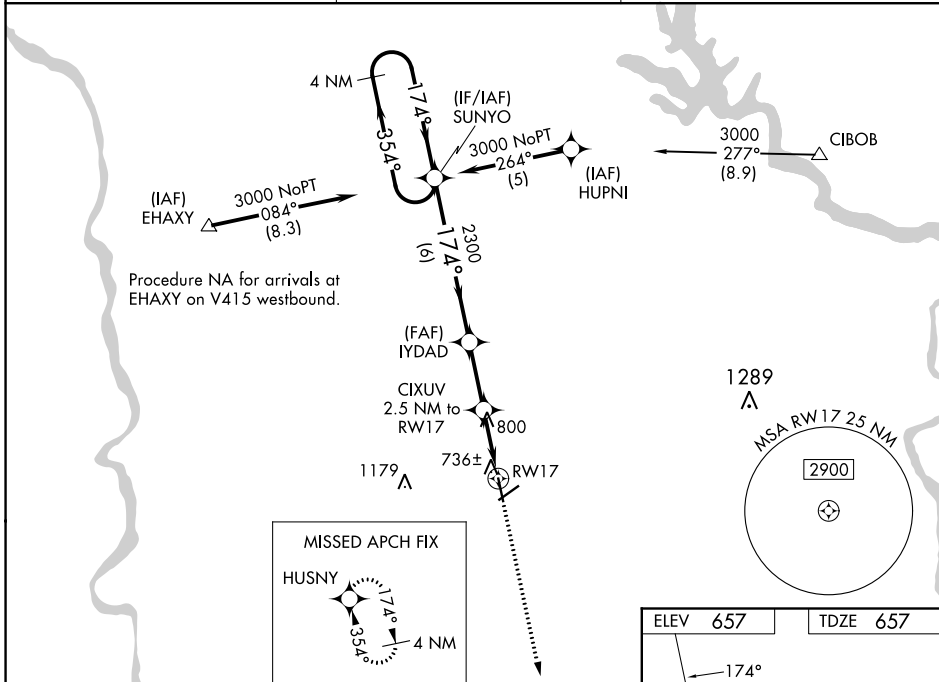
CHESTER CATAWBA RGNL (DCM)

RNP APCH-GPS.

**⚠** Circling to Rwy 5-23 NA at night. For uncompensated Baro-VNAV systems, LNAV/VNAV NA below -16°C or above 47°C. Visibility reduction by helicopters NA. When local altimeter setting not received, use Rock Hill altimeter setting and increase all DA 33 feet and all MDA 40 feet and LNAV Cat D visibility ¼ mile. Baro-VNAV and VDP NA when using Rock Hill altimeter setting.

**MISSED APPROACH:**  
Climb to 3000 direct HUSNY and hold.

AWOS-3 <b>120.975</b>	CHARLOTTE APP CON <b>120.05 307.8</b>	UNICOM <b>122.7 (CTAF) 0</b>
--------------------------	--	---------------------------------



CATEGORY	A	B	C	D
LPV DA		907-1	250 (300-1)	
LNAV/VNAV DA		1134-1¾	477 (500-1¾)	
LNAV MDA	1060-1	403 (500-1)	1060-1¼	403 (500-1¼)
CIRCLING	1160-1	503 (600-1)	1280-1¾ 623 (700-1¾)	1480-2¾ 823 (900-2¾)

SE-2, 22 FEB 2024 to 21 MAR 2024

SE-2, 22 FEB 2024 to 21 MAR 2024

WAAS CH <b>40318</b> <b>W35A</b>	APP CRS <b>354°</b>	Rwy Idg TDZE Apt Elev	<b>5000</b> <b>648</b> <b>657</b>
--	------------------------	-----------------------------	---

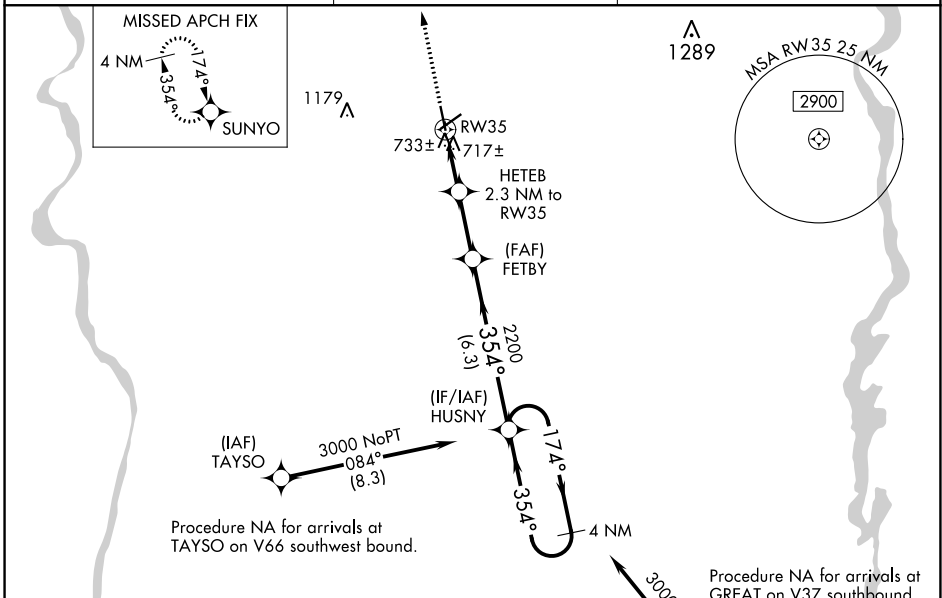
# RNAV (GPS) RWY 35

CHESTER CATAWBA RGNL (DCM)

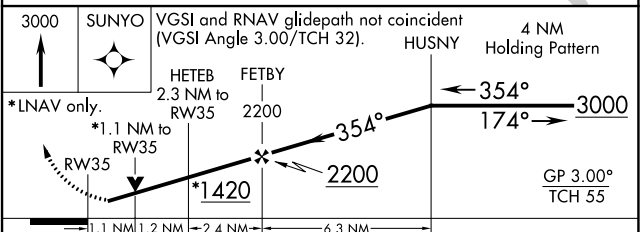
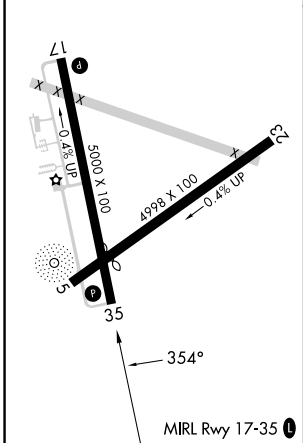
**⚠** Circling to Rwy 5-23 NA at night. For uncompensated Baro-VNAV systems, LNAV/VNAV NA below -16°C (4°F) or above 47°C (116°F). DME/DME RNP-0.3 NA. Visibility reduction by helicopters NA. When local altimeter setting not received, use Rock Hill altimeter setting and increase all DA 33 feet and all MDAs 40 feet; increase LPV, LNAV/VNAV all Cats and LNAV Cat C visibility ¼ mile. Baro-VNAV and VDP NA when using Rock Hill altimeter setting.

**MISSED APPROACH:**  
Climb to 3000 direct SUNYO and hold.

AWOS-3 <b>120.975</b>	CHARLOTTE APP CON <b>120.05 307.8</b>	UNICOM <b>122.7 (CTAF) 0</b>
--------------------------	--	---------------------------------



ELEV 657	TDZE 648
----------	----------



CATEGORY	A	B	C	D
LPV DA	940-1 292 (300-1)			
LNAV/VNAV DA	1010-1¼ 362 (400-1¼)			
LNAV MDA	1020-1 372 (400-1)			1020-1¼ 372 (400-1¼)
CIRCLING	1160-1 503 (600-1)		1280-1¾ 623 (700-1¾)	1480-2¾ 823 (900-2¾)

SE-2, 22 FEB 2024 to 21 MAR 2024

SE-2, 22 FEB 2024 to 21 MAR 2024