

LOC/DME I-OVW 111.5 Chan 52	APP CRS 313°	Rwy Idg TDZE Apt Elev	6952 487 487
---	------------------------	-----------------------------	---

ILS RWY 31R (SA CAT I & II)

DALLAS LOVE FLD (DAL)

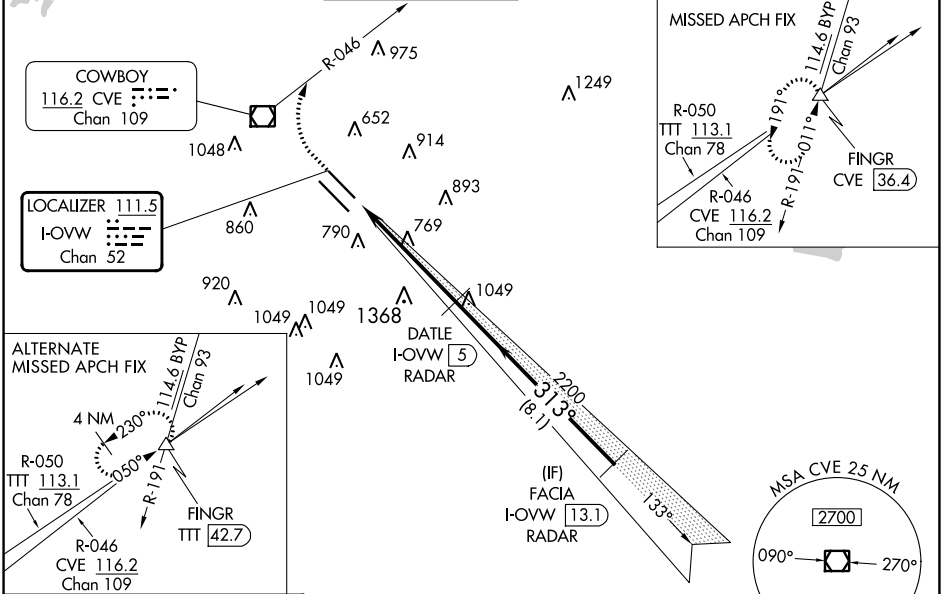
RADAR required for procedure entry.

Simultaneous approach authorized.
SA CAT I/II: Requires specific OPSPEC, MSPEC or LOA approval.

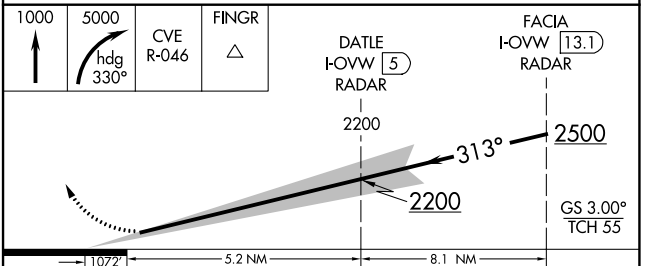
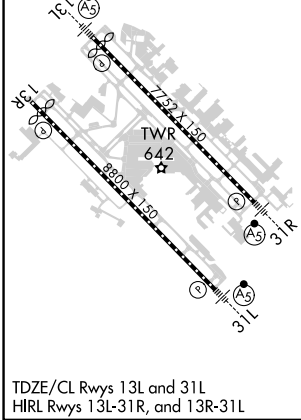
MALSR
AS

MISSED APPROACH: Climb to 1000 then climbing right turn to 5000 on heading 330° and CVE VOR/DME R-046 to FINGR INT/CVE 36.4 DME and hold.

D-ATIS 120.15	REGIONAL APP CON NORTH 124.3 282.275 SOUTH 125.2 343.65	LOVE TOWER 123.7 239.3	GND CON 121.75 348.6	CLNC DEL 127.9	CPDLC
-------------------------	---	----------------------------------	--------------------------------	--------------------------	-------



ELEV 487	D	TDZE 487
-----------------	----------	-----------------



CATEGORY	A	B	C	D
S-ILS 31R	SA CAT I	RA 151/14	150 DA 637	
S-ILS 31R	SA CAT II	RA 98/12	100 DA 587	

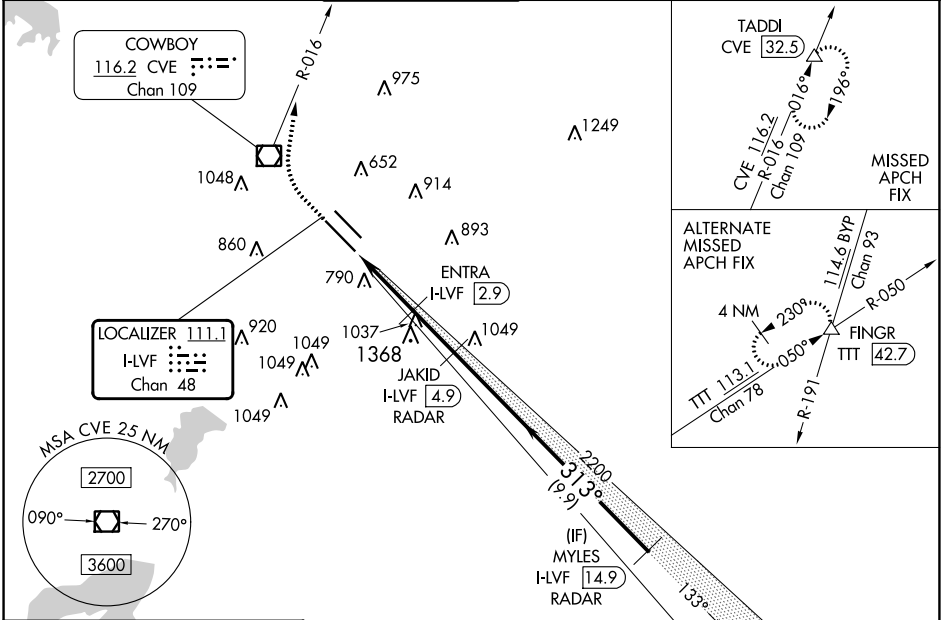
SA CATEGORY I & II ILS - SPECIAL AIRCREW & AIRCRAFT CERTIFICATION REQUIRED

LOC/DME I-LVF 111.1 Chan 48	APP CRS 313°	Rwy Idg 8000
		TDZE 477
		Apt Elev 487

ILS or LOC RWY 31L

DALLAS LOVE FLD (DAL)

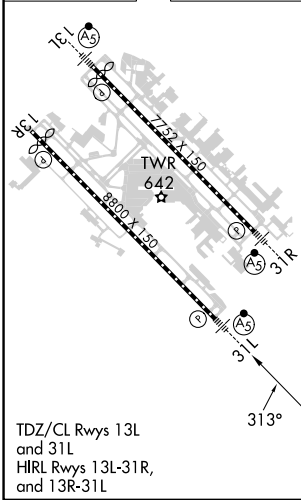
DME required. RADAR required for procedure entry.		MALSR 	MISSED APPROACH: Climb to 4000 direct CVE VOR/DME and on CVE R-016 to TADDI/CVE 32.5 DME and hold.		
Simultaneous approach authorized.					
D-ATIS 120.15	REGIONAL APP CON NORTH 124.3 282.275 SOUTH 125.2 343.65	LOVE TOWER 123.7 239.3	GND CON 121.75 348.6	CLNC DEL 127.9	CPDLC



SC-2, 22 FEB 2024 to 21 MAR 2024

SC-2, 22 FEB 2024 to 21 MAR 2024

ELEV 487	D	TDZE 477
----------	----------	----------



TDZ/CL Rwy 13L and 31L
HIRL Rwy 13L-31R, and 13R-31L

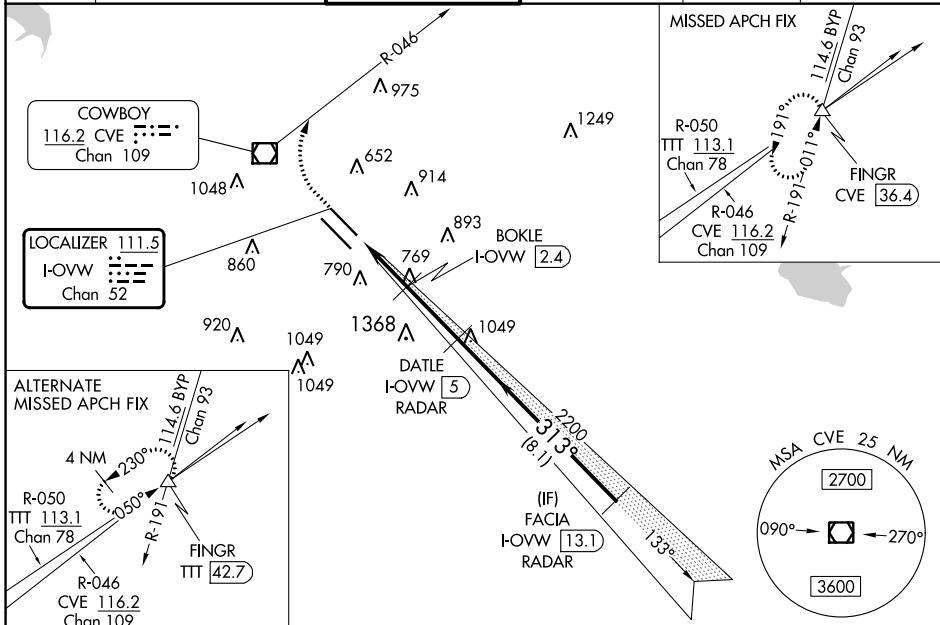
4000	CVE	CVE R-016	TADDI	JAKID I-LVF 4.9 RADAR	MYLES I-LVF 14.9 RADAR
				2200	2500
	I-LVF DME ANTENNA	ENTRA I-LVF 2.9			
	I-LVF 0.2	I-LVF 2.3			
	1520	2200			
	2.5 NM	0.6 NM	2.1 NM	9.9 NM	
CATEGORY	A	B	C	D	
S-ILS 31L	677/18 200 (200-½)				
S-LOC 31L	1340/24 863 (900-½)	1340/40 863 (900-¾)	1340-2	863 (900-2)	
C CIRCLING	1340-1¼	853 (900-1¼)	1340-2½ 853 (900-2½)	1520-3 1033 (1100-3)	

LOC/DME I-OVW 111.5 Chan 52	APP CRS 313°	Rwy Idg TDZE Apt Elev	6952 487 487
--	------------------------	-----------------------------	---

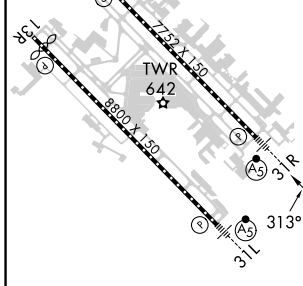
ILS or LOC RWY 31R

DALLAS LOVE FLD (DAL)

DME required. RADAR required for procedure entry.		MALSR	MISSED APPROACH: Climb to 1000 then climbing right turn to 5000 on heading 330° and CVE VOR/DME R-046 to FINGR INT/CVE 36.4 DME and hold.		
⚠ Simultaneous approach authorized. ** RVR 1800 authorized with use of FD or AP or HUD to DA.		AS			
D-ATIS 120.15	REGIONAL APP CON NORTH 124.3 282.275 SOUTH 125.2 343.65	LOVE TOWER 123.7 239.3	GND CON 121.75 348.6	CLNC DEL 127.9	CPDLC



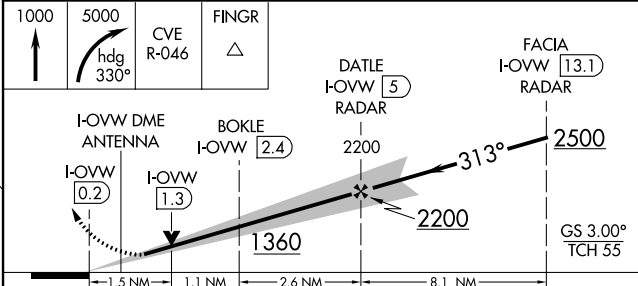
ELEV 487	D	TDZE 487
-----------------	----------	-----------------



TDZE/CL Rwy 13L and 31L
HIRL Rwy 13L-31R and 13R-31L

FAF to MAP 5.2 NM

Knots	60	90	120	150	180
Min:Sec	5:12	3:28	2:36	2:05	1:44



CATEGORY	A				B		C		D							
S-ILS 31R **	687/24 200 (200-½)															
S-LOC 31R	1020/24		533 (600-½)		1020/55		533 (600-1)									
<input checked="" type="checkbox"/> CIRCLING	1020-1		533 (600-1)		1140-1		653 (700-1)		1220-2		733 (800-2)		1520-3		1033 (1100-3)	

SC-2, 22 FEB 2024 to 21 MAR 2024

SC-2, 22 FEB 2024 to 21 MAR 2024

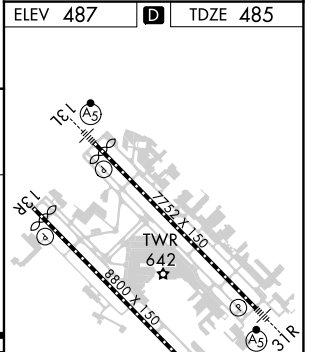
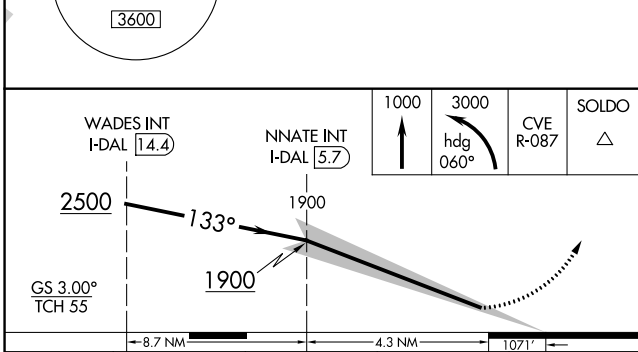
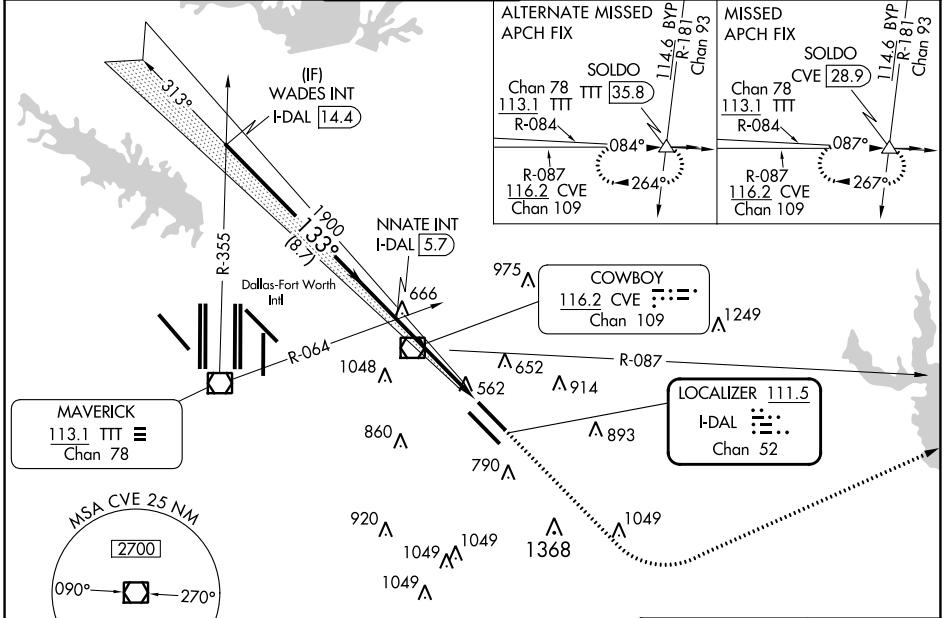
LOC/DME I-DAL	APP CRS	Rwy Idg	7352
111.5	133°	TDZE	485
Chan 52		Apt Elev	487

ILS Y RWY 13L (SA CAT I & II)

DALLAS LOVE FLD (DAL)

RADAR required for procedure entry.		MALSR AS	MISSED APPROACH: Climb to 1000 then climbing left turn to 3000 on heading 060° and CVE VOR/DME R-087 to SOLDO INT/CVE 28.9 DME and hold.
<p>Simultaneous approach authorized. Requires specific OPSPEC, MSPEC, or LOA approval and use of HUD to DH. Reduced lighting: Requires specific OPSPEC, MSPEC, or LOA approval and use of Autoland or HUD to touchdown.</p>			

D-ATIS 120.15	REGIONAL APP CON NORTH 124.3 282.275 SOUTH 125.2 343.65	LOVE TOWER 123.7 239.3	GND CON 121.75 348.6	CLNC DEL 127.9	CPDLC
-------------------------	---	----------------------------------	--------------------------------	--------------------------	-------



CATEGORY	A	B	C	D
S-ILS 13L	SA CAT I	RA 168/14	150 DA 635	
S-ILS 13L	SA CAT II	RA 144/12	100 DA 585	

SA CATEGORY I & II ILS SPECIAL AIRCREW & AIRCRAFT CERTIFICATION REQUIRED

TDZ/CL Rwy 13L and 31L
HIRL Rwy 13L-31R, and 13R-31L

SC-2, 22 FEB 2024 to 21 MAR 2024

SC-2, 22 FEB 2024 to 21 MAR 2024

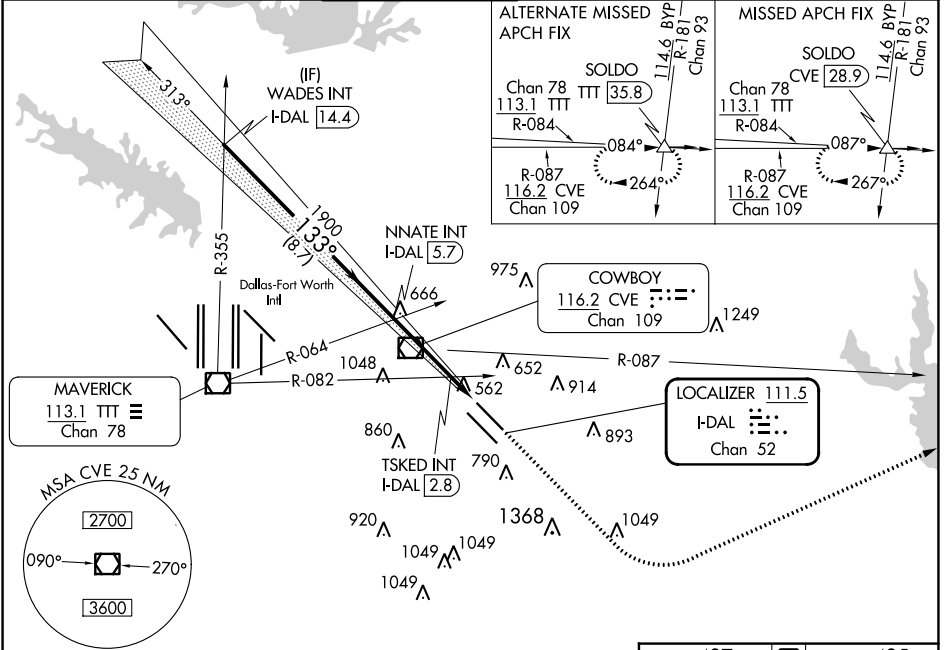
LOC/DME I-DAL 111.5 Chan 52	APP CRS 133°	Rwy Idg 7352 TDZE 485 Apt Elev 487
---	------------------------	---

ILS Y or LOC Y RWY 13L

DALLAS LOVE FLD (DAL)

RADAR required for procedure entry.		MALSR 	MISSED APPROACH: Climb to 1000 then climbing left turn to 3000 on heading 060° and CVE VOR/DME R-087 to SOLDLO INT/CVE 28.9 DME and hold.
Simultaneous approach authorized.			

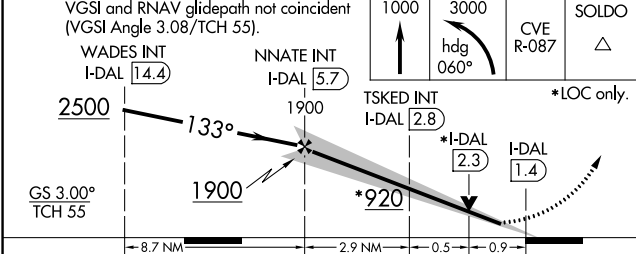
D-ATIS 120.15	REGIONAL APP CON NORTH 124.3 282.275 SOUTH 125.2 343.65	LOVE TOWER 123.7 239.3	GND CON 121.75 348.6	CLNC DEL 127.9	CPDLC
-------------------------	---	----------------------------------	--------------------------------	--------------------------	-------



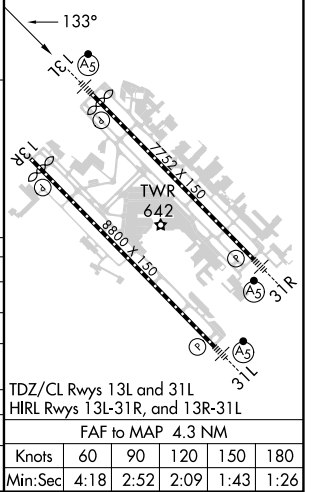
SC-2, 22 FEB 2024 to 21 MAR 2024

SC-2, 22 FEB 2024 to 21 MAR 2024

ELEV 487	D	TDZE 485
----------	----------	----------



CATEGORY	A	B	C	D
S-ILS 13L	685/18 200 (200-½)			
S-LOC 13L	920/24	435 (500-½)	920/40	435 (500-¾)
CIRCLING	1000-1 513 (600-1)	1140-1 653 (700-1)	1220-2 733 (800-2)	1520-3 1033 (1100-3)
TSKED FIX MINIMUMS (DUAL VOR RECEIVERS OR DME REQUIRED)				
S-LOC 13L	820/24	335 (400-½)	820/26	335 (400-¾)
CIRCLING	1000-1 513 (600-1)	1140-1 653 (700-1)	1220-2 733 (800-2)	1520-3 1033 (1100-3)



TDZ/CL Rws 13L and 31L HIRL Rws 13L-31L, and 13R-31L	FAF to MAP 4.3 NM					
	Knots	60	90	120	150	180
	Min:Sec	4:18	2:52	2:09	1:43	1:26

LOC/DME I-DPX 111.1 Chan 48	APP CRS 133°	Rwy Idg TDZE Apt Elev 8310 479 487
---	------------------------	--

ILS Y or LOC Y RWY 13R

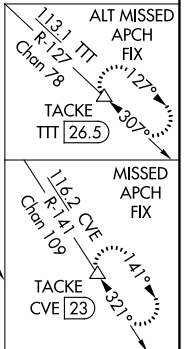
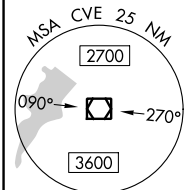
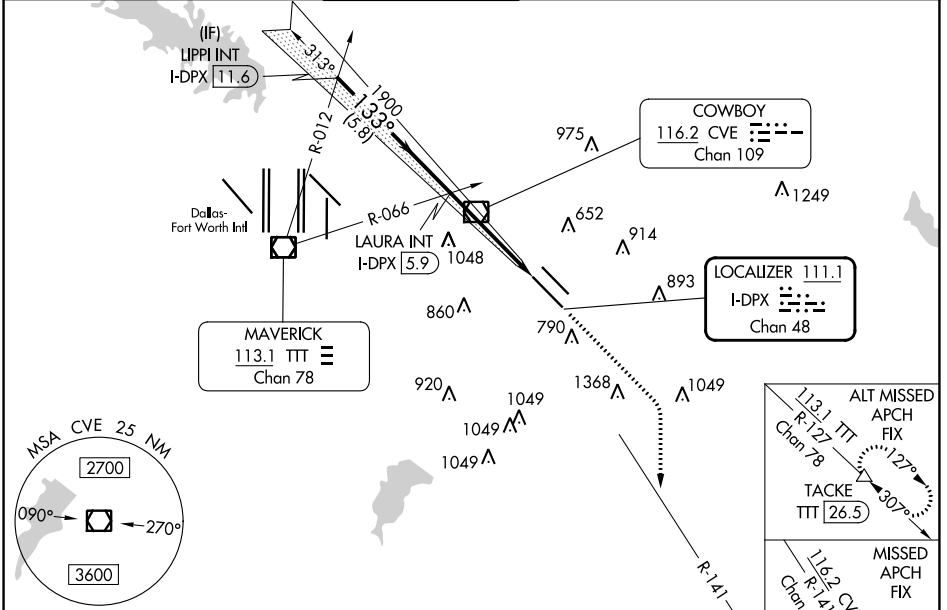
DALLAS LOVE FLD (DAL)

DME required.
RADAR required for procedure entry.

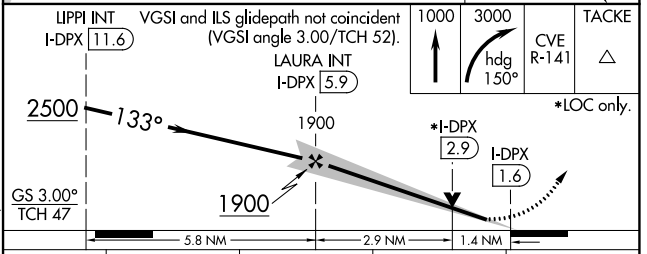
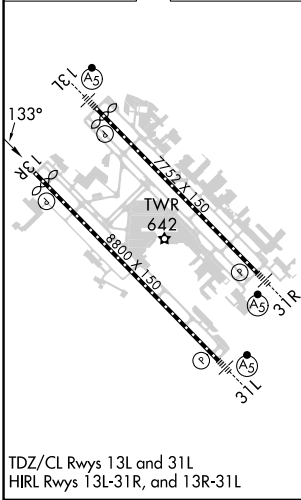
Simultaneous approach authorized.

MISSED APPROACH: Climb to 1000 then climbing right turn to 3000 on heading 150° and CVE VOR/DME R-141 to TACKE/CVE 23 DME and hold.

D-ATIS 120.15	REGIONAL APP CON NORTH 124.3 282.275 SOUTH 125.2 343.65	LOVE TOWER 123.7 239.3	GND CON 121.75 348.6	CLNC DEL 127.9	CPDLC
-------------------------	---	----------------------------------	--------------------------------	--------------------------	-------



ELEV 487	D	TDZE 479
----------	----------	----------



CATEGORY	A	B	C	D
S-ILS 13R	679/40 200 (200-3/4)			
S-LOC 13R	960/55	481 (500-1)	960-13/8	481 (500-13/8)
C CIRCLING	1080-1 593 (600-1)	1140-1 653 (700-1)	1220-2 733 (800-2)	1520-3 1033 (1100-3)

SC-2, 22 FEB 2024 to 21 MAR 2024

SC-2, 22 FEB 2024 to 21 MAR 2024

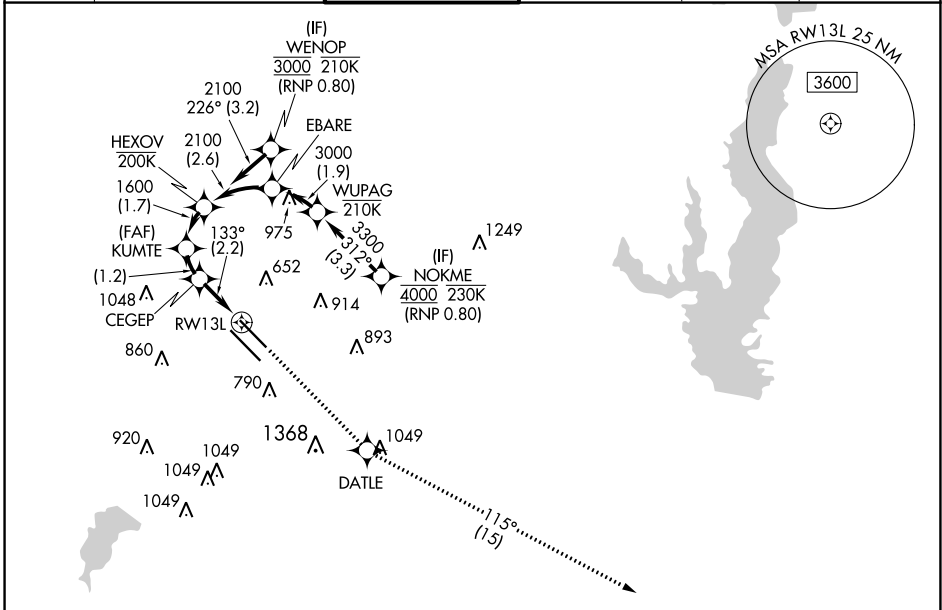
APP CRS	Rwy Idg	7352
133°	TDZE	485
	Apt Elev	487

RNAV (RNP) W RWY 13L

DALLAS LOVE FLD (DAL)

RNP AR APCH. RF required.		MALSR MISSED APPROACH: Climb to 3000 direct DATLE and on track 115° to DUMPY and hold.
Simultaneous approach authorized. For uncompensated Baro-VNAV systems, procedure NA below -6°C or above 54°C. For inop ALS, increase RNP 0.11 all Cats visibility to RVR 4500.		

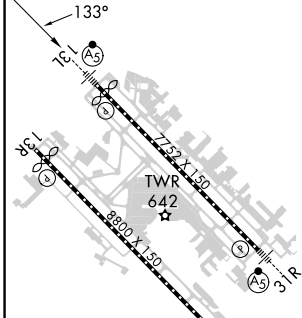
D-ATIS 120.15	REGIONAL APP CON NORTH 124.3 282.275 SOUTH 125.2 343.65	LOVE TOWER 123.7 239.3	GND CON 121.75 348.6	CLNC DEL 127.9	CPDLC
-------------------------	---	----------------------------------	--------------------------------	--------------------------	-------



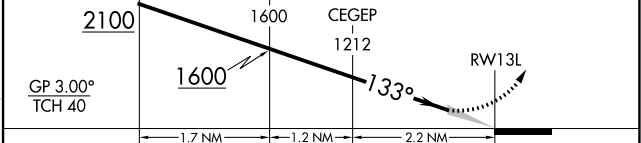
SC-2, 22 FEB 2024 to 21 MAR 2024

SC-2, 22 FEB 2024 to 21 MAR 2024

ELEV 487	D	TDZE 485
-----------------	----------	-----------------



See planview for multiple IF locations.						tr 115°	
---	--	--	--	--	--	---------	--



CATEGORY	A	B	C	D
RNP 0.11 DA	754/24		269 (300-1/2)	
RNP 0.30 DA	846/40		361 (400-3/4)	

TDZ/CL Rwy 13L and 31L
HIRL Rwy 13L-31R, and 13R-31L

AUTHORIZATION REQUIRED

APP CRS 133°	Rwy Idg 8310
	TDZE 478
	Apt Elev 487

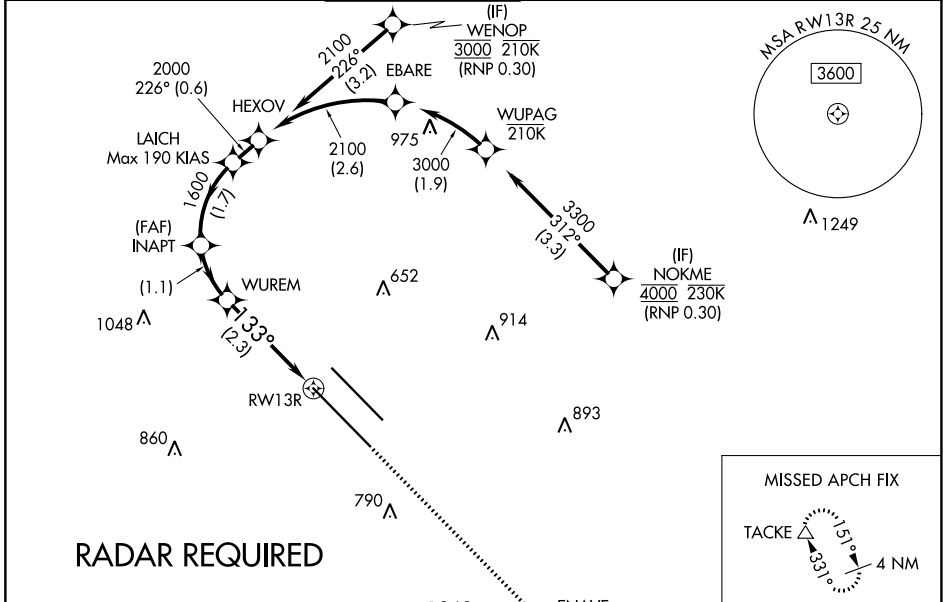
RNAV (RNP) W RWY 13R

DALLAS LOVE FLD (DAL)

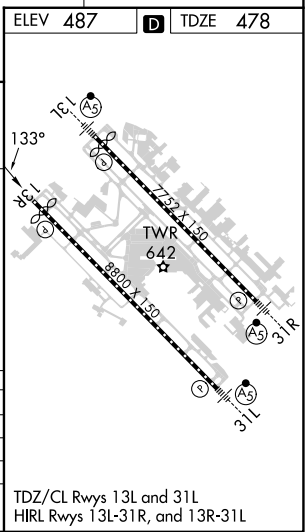
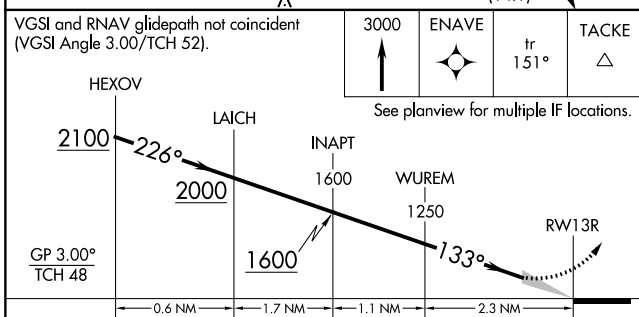
▼ For uncompensated Baro-VNAV systems, procedure NA below -5°C (23°F) or above 54°C (130°F). Simultaneous approach authorized. RF required. GPS required. Use of FD or AP providing RNAV track guidance required during simultaneous operations.

MISSED APPROACH: Climb to 3000 direct ENAVE and on track 151° to TACKE and hold.

D-ATIS 120.15	REGIONAL APP CON NORTH 124.3 282.275 SOUTH 125.2 343.65	LOVE TOWER 123.7 239.3	GND CON 121.75 348.6	CLNC DEL 127.9	CPDLC
-------------------------	---	----------------------------------	--------------------------------	--------------------------	-------



ELEV 487	TDZE 478
----------	----------



CATEGORY	A	B	C	D
RNP 0.20 DA		781/50	303 (300-1)	
RNP 0.25 DA		833/60	355 (400-1½)	
RNP 0.30 DA		929-1½	451 (500-1½)	

AUTHORIZATION REQUIRED

TDZ/CL Rwy 13L and 31L
HIRL Rwy 13L-31R, and 13R-31L

SC-2, 22 FEB 2024 to 21 MAR 2024

SC-2, 22 FEB 2024 to 21 MAR 2024

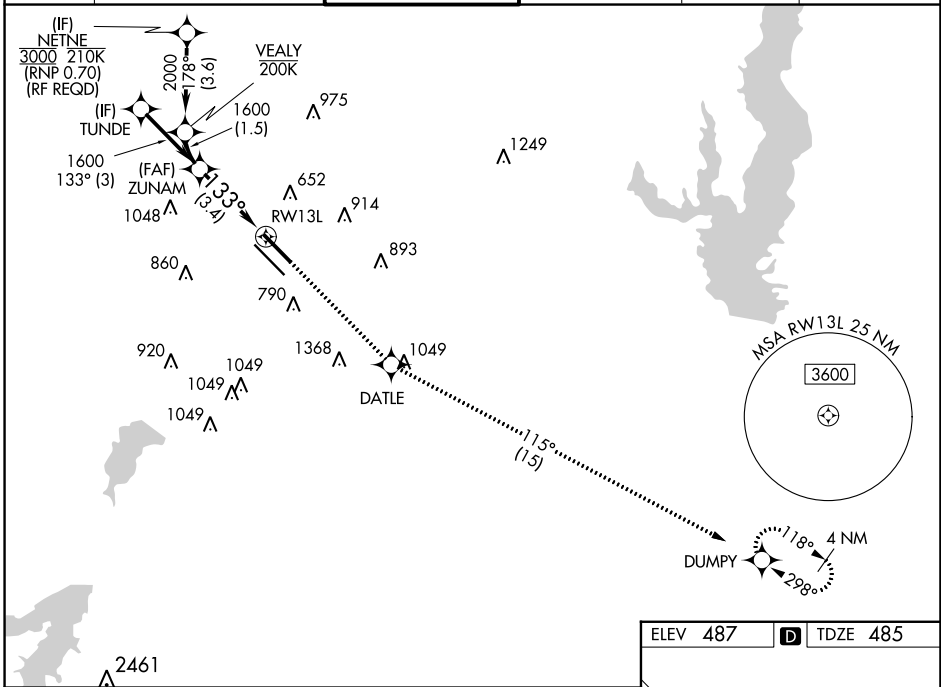
APP CRS	Rwy Idg	7352
133°	TDZE	485
	Apt Elev	487

RNAV (RNP) X RWY 13L

DALLAS LOVE FLD (DAL)

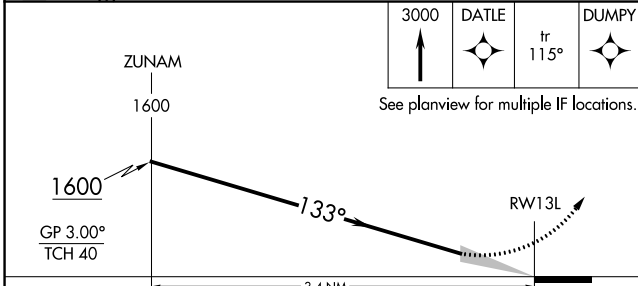
RNP AR APCH.	MALSR	MISSED APPROACH: Climb to 3000 direct DATLE and on track 115° to DUMPY and hold.
Simultaneous approach authorized. For uncompensated Baro-VNAV systems, procedure NA below -6°C or above 54°C. For inop ALS, increase RNP 0.11 all Cats visibility to RVR 4500.		

D-ATIS	REGIONAL APP CON	LOVE TOWER	GND CON	CINC DEL	CPDLC
120.15	NORTH 124.3 282.275 SOUTH 125.2 343.65	123.7 239.3	121.75 348.6	127.9	



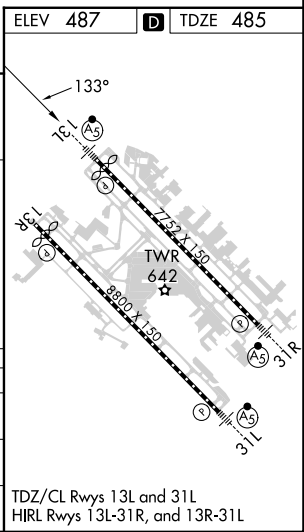
SC-2, 22 FEB 2024 to 21 MAR 2024

SC-2, 22 FEB 2024 to 21 MAR 2024



CATEGORY	A	B	C	D
RNP 0.11 DA		754/24	269 (300-½)	
RNP 0.30 DA		846/40	361 (400-¾)	

AUTHORIZATION REQUIRED



TDZ/CL Rwy 13L and 31L
HIRL Rwy 13L-31R, and 13R-31L

APP CRS	Rwy Idg	8310
133°	TDZE	478
	Apt Elev	487

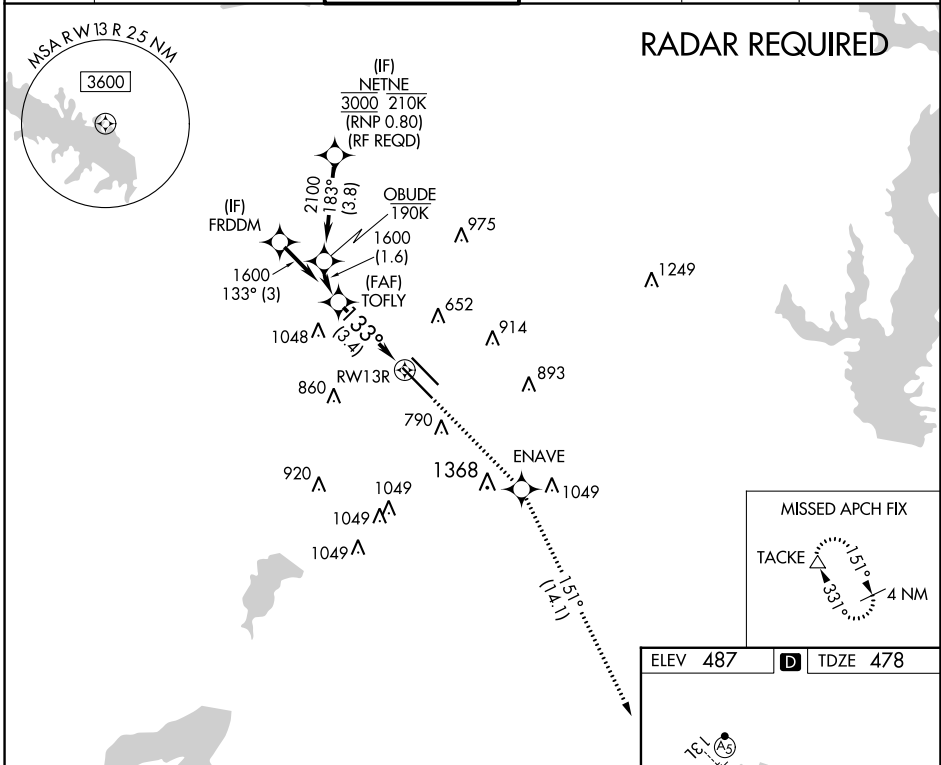
RNAV (RNP) X RWY 13R

DALLAS LOVE FLD (DAL)

▼ For uncompensated Baro-VNAV systems, procedure NA below -5°C (23°F) or above 54°C (130°F). Simultaneous approach authorized. GPS required. Use of FD or AP providing RNAV track guidance required during simultaneous operations.

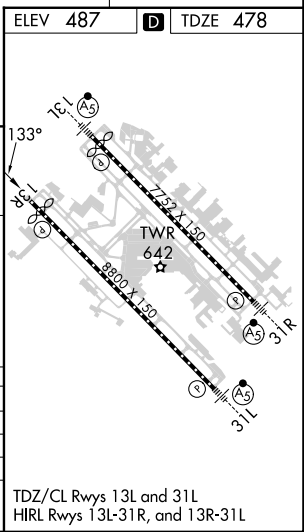
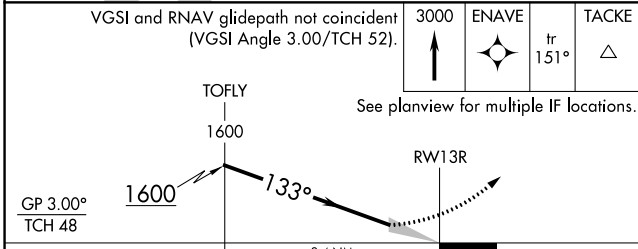
MISSED APPROACH: Climb to 3000 direct ENAVE and on track 151° to TACKE and hold.

D-ATIS	REGIONAL APP CON	LOVE TOWER	GND CON	CLNC DEL	CPDLC
120.15	NORTH 124.3 282.275 SOUTH 125.2 343.65	123.7 239.3	121.75 348.6	127.9	



SC-2, 22 FEB 2024 to 21 MAR 2024

SC-2, 22 FEB 2024 to 21 MAR 2024



CATEGORY	A	B	C	D
RNP 0.20 DA		781/50	303 (300-1)	
RNP 0.25 DA		833/60	355 (400-1½)	
RNP 0.30 DA		929-1½	451 (500-1½)	

AUTHORIZATION REQUIRED

TDZ/CL Rwy 13L and 31L
HIRL Rwy 13L-31R, and 13R-31L

RNAV (RNP) Z RWY 31L

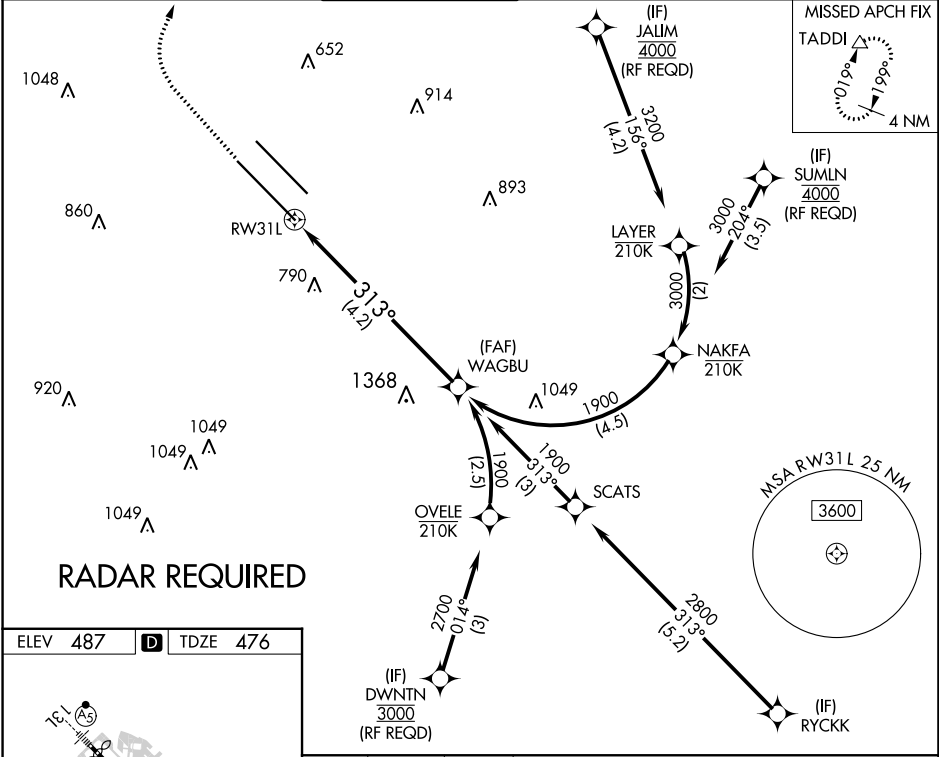
DALLAS LOVE FLD (DAL)

APP CRS 313°	Rwy Idg 8000
	TDZE 476
	Apt Elev 487

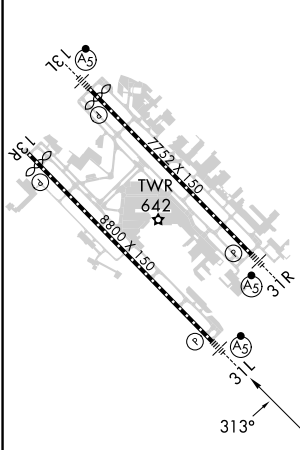
▼ For uncompensated Baro-VNAV systems, procedure NA below -5°C (23°F) or above 48°C (119°F). Simultaneous approach authorized. GPS required. Use of FD or AP providing RNAV track guidance required during simultaneous operations. For inop MALSR, increase RNP 0.30 visibility all Cats to 2½ miles.

MALSR MISSED APPROACH: Climb to 1700 then climbing right turn to 4000 direct TADDI and hold.

D-ATIS 120.15	REGIONAL APP CON NORTH 124.3 282.275 SOUTH 125.2 343.65	LOVE TOWER 123.7 239.3	GND CON 121.75 348.6	CLNC DEL 127.9	CPDLC
-------------------------	---	----------------------------------	--------------------------------	--------------------------	-------

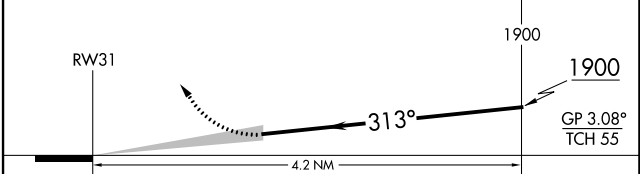


ELEV 487	D	TDZE 476
----------	----------	----------



TDZ/CL Rwy 13L and 31L
HIRL Rwy 13L-31R, and 13R-31L

1700 4000 TADDI See planview for multiple IF locations.



CATEGORY	A	B	C	D
RNP 0.30 DA		1117-1½	641 (700-1½)	

AUTHORIZATION REQUIRED

SC-2, 22 FEB 2024 to 21 MAR 2024

SC-2, 22 FEB 2024 to 21 MAR 2024

RNAV (RNP) Z RWY 31R

DALLAS LOVE FLD (DAL)

APP CRS 313°	Rwy Idg 6952 TDZE 487 Apt Elev 487
------------------------	---

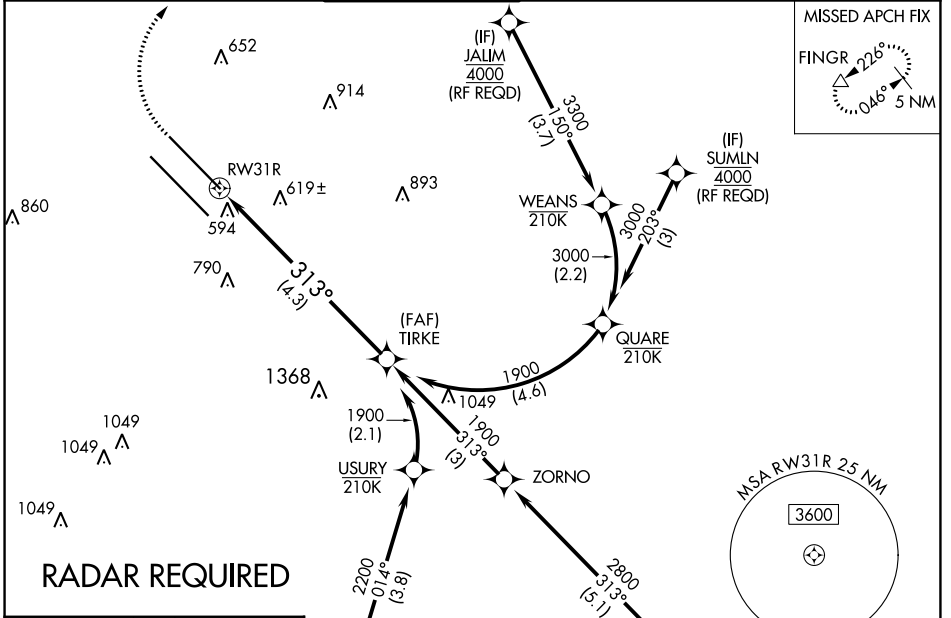
RNP AR APCH.

▼ For uncompensated Baro-VNAV systems, procedure NA below -5°C (23°F) or above 54°C (130°F). Use of FD or AP providing RNAV track guidance required during simultaneous operations. Simultaneous approach authorized.

MALSR

MISSED APPROACH: Climb to 900 then climbing right turn to 5000 direct FINGR and hold.

D-ATIS 120.15	REGIONAL APP CON NORTH 124.3 282.275 SOUTH 125.2 343.65	LOVE TOWER 123.7 239.3	GND CON 121.75 348.6	CLNC DEL 127.9	CPDLC
-------------------------	---	----------------------------------	--------------------------------	--------------------------	-------

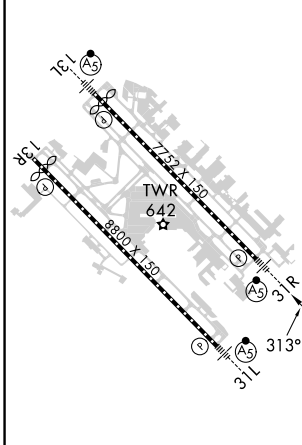


SC-2, 22 FEB 2024 to 21 MAR 2024

SC-2, 22 FEB 2024 to 21 MAR 2024

RADAR REQUIRED

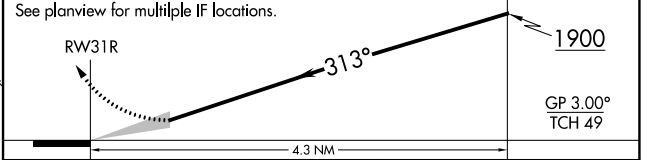
ELEV 487	D	TDZE 487
-----------------	----------	-----------------



900 5000 FINGR

VGSI and RNAV glidepath not coincident (VGSI Angle 3.00/TCH 55).

TIRKE 1900



CATEGORY	A	B	C	D
RNP 0.16 DA		796/24	309 (400-½)	
RNP 0.30 DA		895/45	408 (500-¾)	

TDZ/CL Rwy 13L and 31L
HIRL Rwy 13L-31R, and 13R-31L

AUTHORIZATION REQUIRED

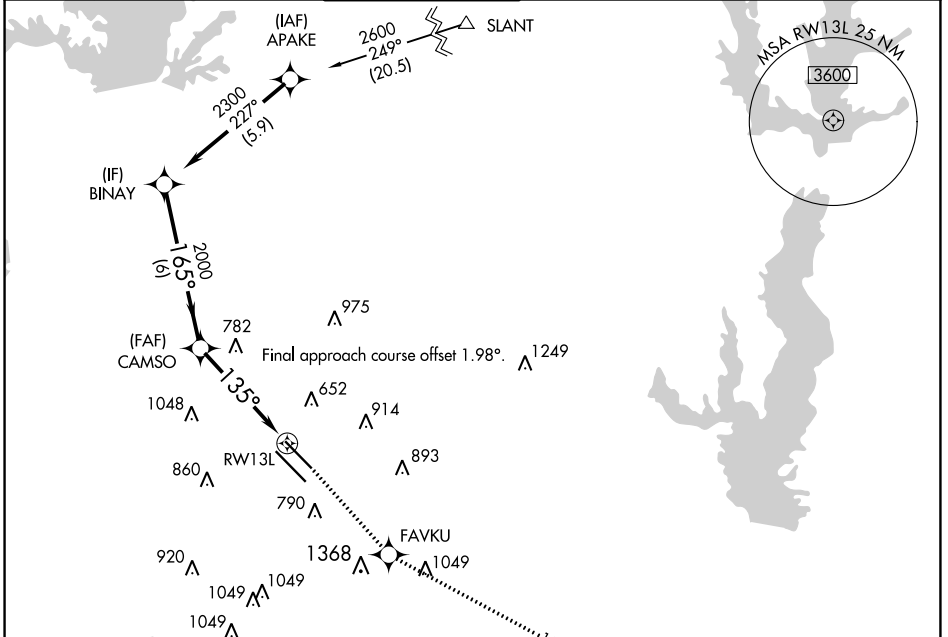
APP CRS	Rwy Idg	7352
135°	TDZE	485
	Apt Elev	487

RNAV (GPS) Y RWY 13L

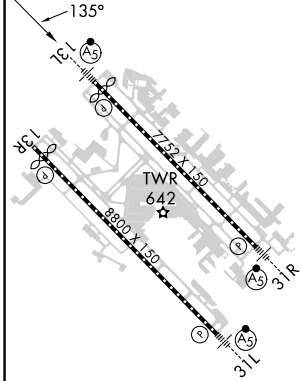
DALLAS LOVE FLD (DAL)

RNP APCH.		MALSR	MISSED APPROACH: Climb to 3000 direct FAVKU and on track 115° to DUMPY and hold.		

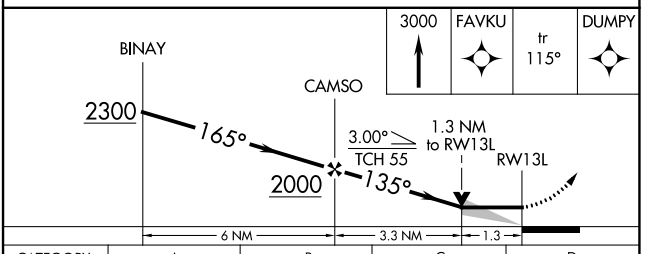
D-ATIS	REGIONAL APP CON	LOVE TOWER	GND CON	CLNC DEL	CPDLC
120.15	NORTH 124.3 282.275 SOUTH 125.2 343.65	123.7 239.3	121.75 348.6	127.9	



ELEV	487	D	TDZE	485
------	------------	----------	------	------------



TDZ/CL Rws	13L and 31L
HIRL Rws	13L-31R, and 13R-31L



CATEGORY	A	B	C	D
LNAV MDA	940/24	455 (500-1/2)	940/45	455 (500-7/8)
C CIRCLING	1080-1 593 (600-1)	1140-1 653 (700-1)	1220-2 733 (800-2)	1520-3 1033 (1100-3)

SC-2, 22 FEB 2024 to 21 MAR 2024

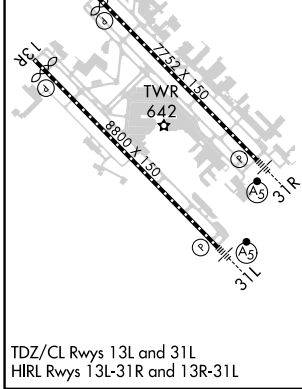
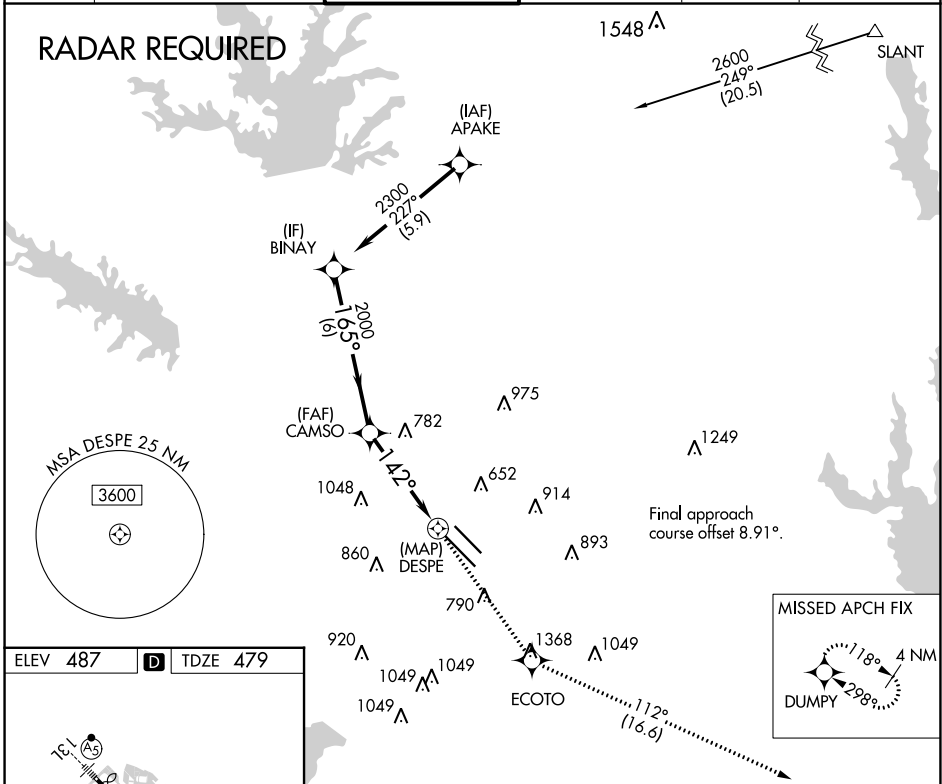
SC-2, 22 FEB 2024 to 21 MAR 2024

APP CRS	Rwy ldg	8310
142°	TDZE	479
	Apt Elev	487

RNAV (GPS) Y RWY 13R

DALLAS LOVE FLD (DAL)

RNP APCH.		MISSED APPROACH: Climb to 5000 direct ECOTO and on track 112° to DUMPY and hold.			
D-ATIS	REGIONAL APP CON	LOVE TOWER	GND CON	CLNC DEL	CPDLC
120.15	NORTH 124.3 282.275 SOUTH 125.2 343.65	123.7 239.3	121.75 348.6	127.9	



	5000	ECOTO	tr 112°	DUMPY
BINAY	2300			
CAMSO	2000	2.96° TCH 53	0.7 NM to DESPE	
	6 NM	3.5 NM	0.7	
CATEGORY	A	B	C	D
LNAV MDA	920/55	441 (500-1)	920-1 $\frac{3}{8}$	441 (500-1 $\frac{3}{8}$)
C CIRCLING	1080-1 593 (600-1)	1140-1 653 (700-1)	1220-2 733 (800-2)	1520-3 1033 (1100-3)

SC-2, 22 FEB 2024 to 21 MAR 2024

SC-2, 22 FEB 2024 to 21 MAR 2024

WAAS CH 72808 W31A	APP CRS 313°	Rwy Idg TDZE 477 Apt Elev 487
---------------------------------	------------------------	---

RNAV (GPS) Y RWY 31L

DALLAS LOVE FLD (DAL)

RNP APCH.

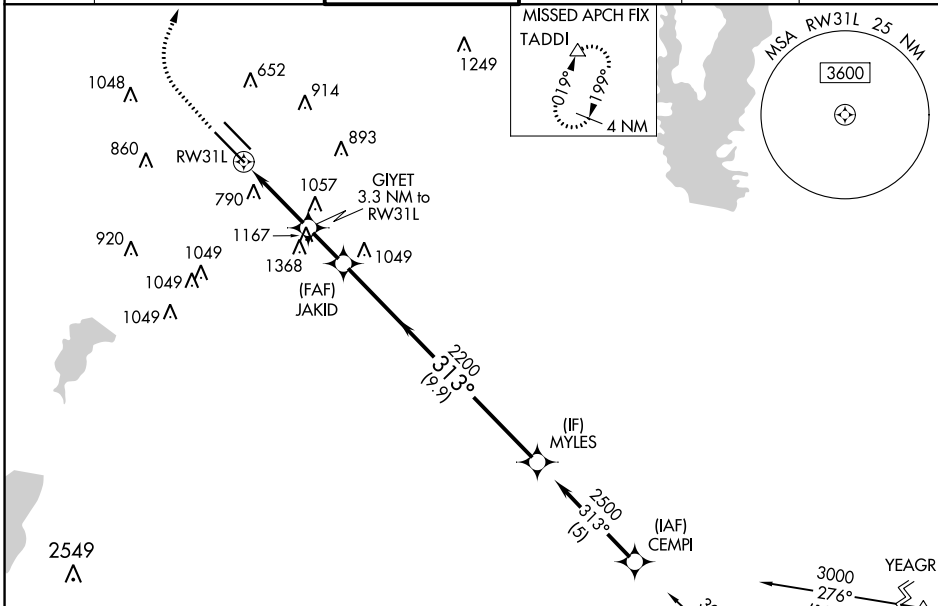
Simultaneous approach authorized. Use of FD or AP providing RNAV track guidance required during simultaneous operations. LNAV procedure NA during simultaneous operations. For inop ALS, increase LPV all Cats visibility to RVR 4500.

MALSR

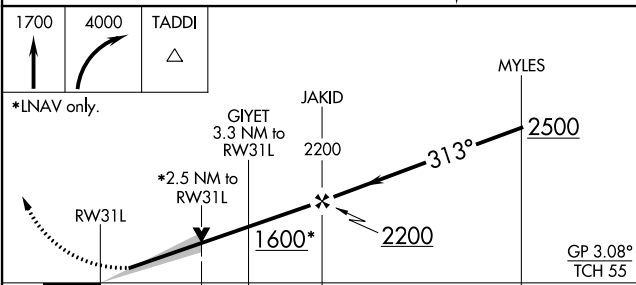
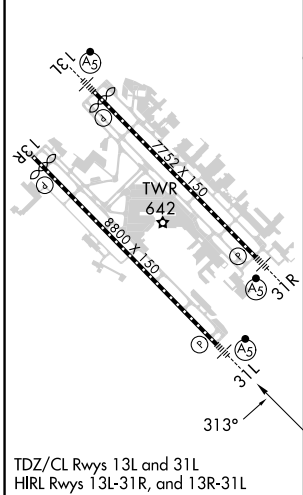


MISSED APPROACH: Climb to 1700 then climbing right turn to 4000 direct TADDI and hold.

D-ATIS 120.15	REGIONAL APP CON NORTH 124.3 282.275 SOUTH 125.2 343.65	LOVE TOWER 123.7 239.3	GND CON 121.75 348.6	CLNC DEL 127.9	CPDLC
-------------------------	---	----------------------------------	--------------------------------	--------------------------	-------



ELEV 487	D	TDZE 477
----------	----------	----------



CATEGORY	A	B	C	D
LPV DA	770/22 293 (300-1/2)			
LNAV MDA	1360/40	883 (900-3/4)	1360-2	883 (900-2)
C CIRCLING	1360-1/4	873 (900-1/4)	1360-2 1/2 873 (900-2 1/2)	1520-3 1033 (1100-3)

RNAV (GPS) Y RWY 31R

DALLAS LOVE FLD (DAL)

WAAS CH 87123 W31B	APP CRS 313°	Rwy Idg 6952 TDZE 487 Apt Elev 487
--	------------------------	---

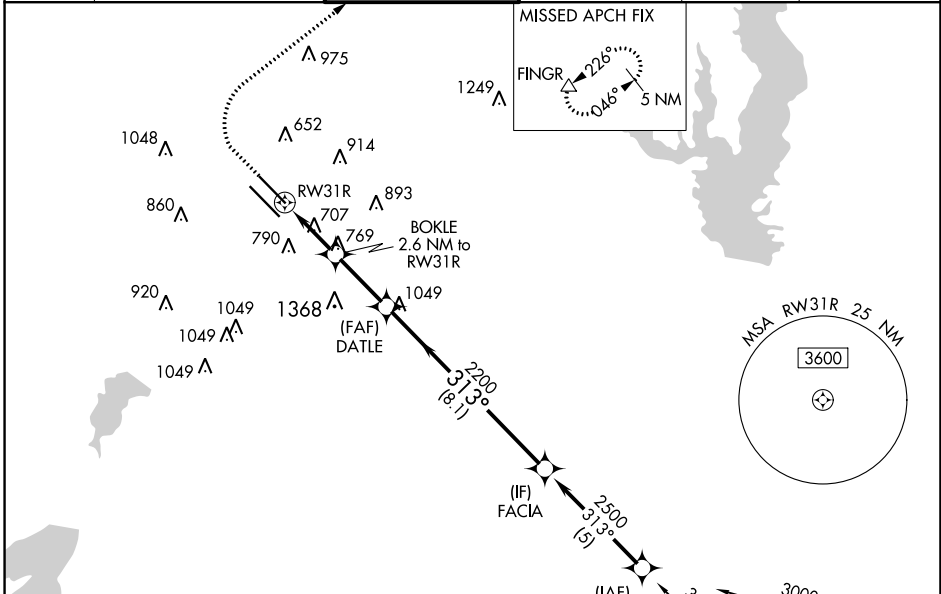
RNP APCH-GPS

▽ Simultaneous approach authorized. For uncompensated Baro-VNAV systems, LNAV/VNAV NA below -6°C or above 54°C. LNAV procedure NA during simultaneous operations.
▲ Use of FD or AP providing RNAV track guidance required during simultaneous operations.
 For inop ALS, increase LNAV visibility Cat C/D to 1½ SM.
 ** RVR 1800 authorized with use of FD or AP or HUD to DA.

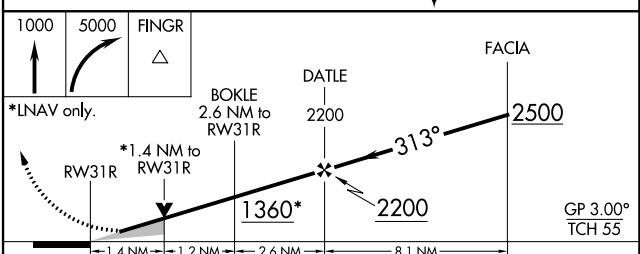
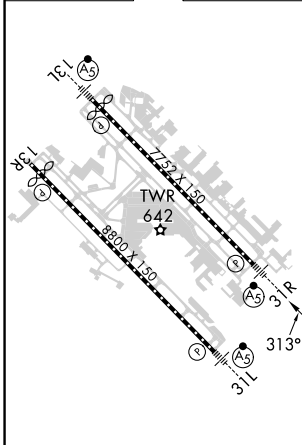


MISSED APPROACH:
Climb to 1000 then climbing right turn to 5000 direct FINGR and hold.

D-ATIS 120.15	REGIONAL APP CON NORTH 124.3 282.275 SOUTH 125.2 343.65	LOVE TOWER 123.7 239.3	GND CON 121.75 348.6	CLNC DEL 127.9	CPDLC
-------------------------	---	----------------------------------	--------------------------------	--------------------------	-------



ELEV 487	D	TDZE 487
-----------------	----------	-----------------



CATEGORY	A	B	C	D
LPV DA **		687/24	200 (200-½)	
LNAV/VNAV DA		873/35	386 (400-¾)	
LNAV MDA	980/24	493 (500-½)	980/50	493 (500-1)
C CIRCLING	1080-1 593 (600-1)	1140-1 653 (700-1)	1220-2 733 (800-2)	1520-3 1033 (1100-3)

TDZ/CL Rwy 13L and 31L
HIRL Rwy 13L-31R, and 13R-31L

SC-2, 22 FEB 2024 to 21 MAR 2024

SC-2, 22 FEB 2024 to 21 MAR 2024

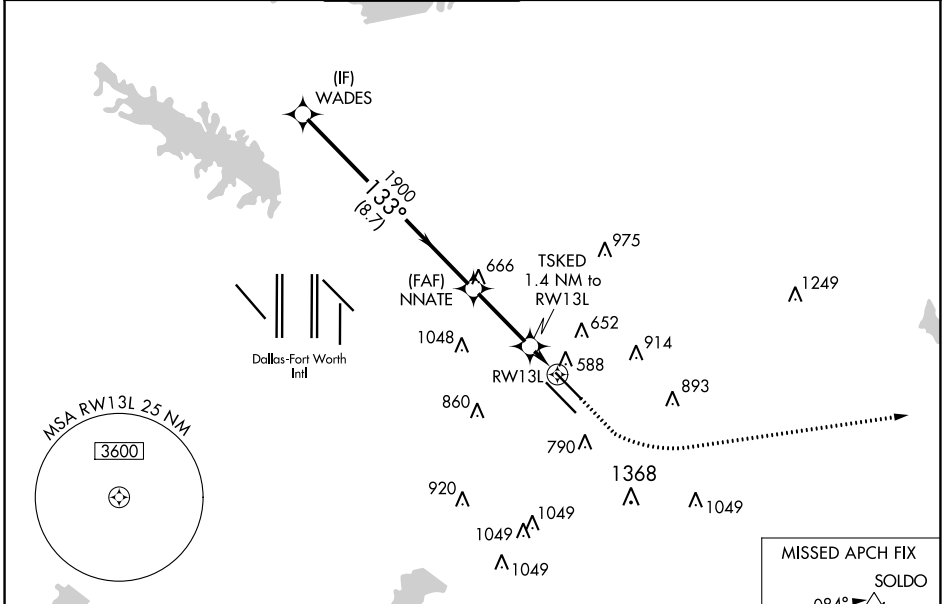
WAAS CH 99723 W13B	APP CRS 133°	Rwy Idg 7352 TDZE 485 Apt Elev 487
--	------------------------	---

RNAV (GPS) Z RWY 13L

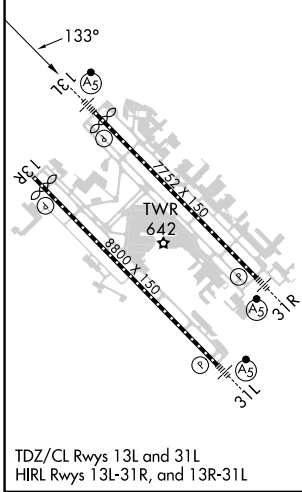
DALLAS LOVE FLD (DAL)

RNP APCH.	<p>Simultaneous approach authorized. Use of FD or AP required during simultaneous operations.</p> <p>▽ LNAV procedure NA during simultaneous operations. For uncompensated Baro-VNAV systems, procedure NA below -6°C or above 54°C. For inop ALS, increase LNAV/VNAV all Cats visibility to RVR 4500 and LNAV Cats C/D visibility to RVR 5500.</p>	MALS R	MISSED APPROACH: Climb to 1000 then climbing left turn to 3000 direct SOLDO and hold.
-----------	--	--------	--

D-ATIS 120.15	REGIONAL APP CON NORTH 124.3 282.275 SOUTH 125.2 343.65	LOVE TOWER 123.7 239.3	GND CON 121.75 348.6	CLNC DEL 127.9	CPDLC
-------------------------	---	----------------------------------	--------------------------------	--------------------------	-------



ELEV 487	D	TDZE 485
-----------------	----------	-----------------



	WADES	NNATE	TSKED	SOLDO
	2500	1900	1900	1000 3000
	133°		1.4 NM to RWY 13L	*LNAV only.
	8.7 NM	2.9 NM	1.4 NM	
GP 3.00° TCH 55				
CATEGORY	A	B	C	D
LPV DA		685/18	200 (200-½)	
LNAV/VNAV DA		764/24	279 (300-½)	
LNAV MDA	840/24	355 (400-½)	840/30	355 (400-¾)
C CIRCLING	1000-1 513 (600-1)	1140-1 653 (700-1)	1220-2 733 (800-2)	1520-3 1033 (1100-3)

SC-2, 22 FEB 2024 to 21 MAR 2024

SC-2, 22 FEB 2024 to 21 MAR 2024

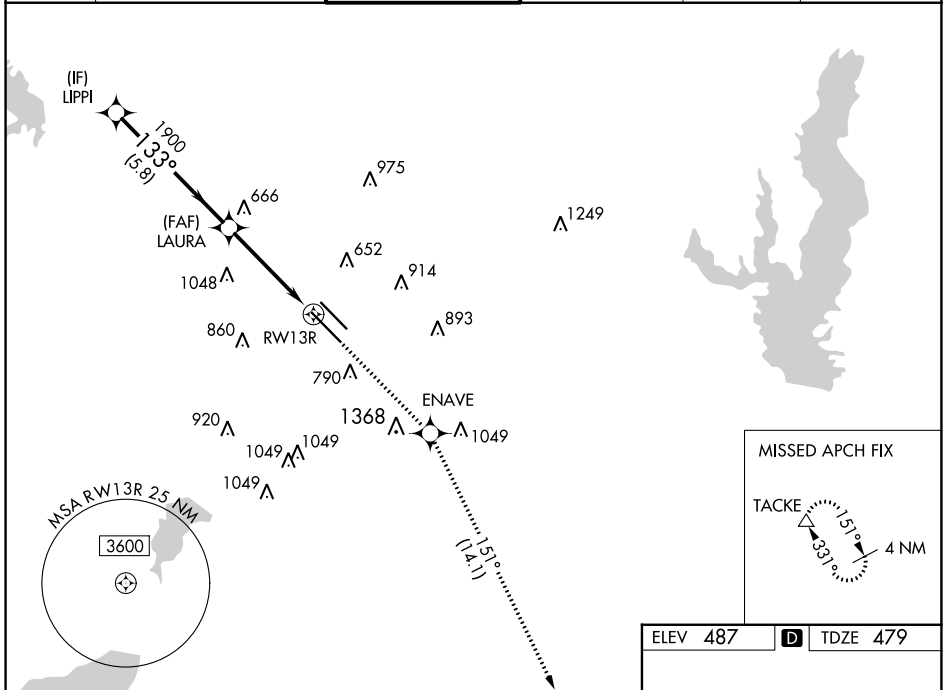
WAAS CH 82436 W13A	APP CRS 133°	Rwy Idg 8310 TDZE 479 Apt Elev 487
--	------------------------	---

RNAV (GPS) Z RWY 13R

DALLAS LOVE FLD (DAL)

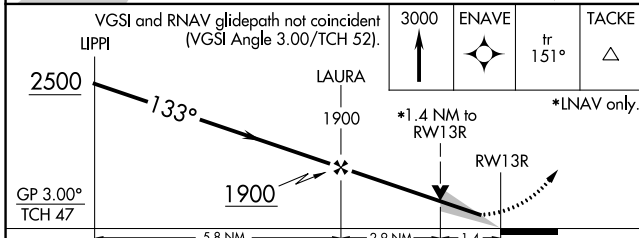
RNP APCH.	<p>Simultaneous approach authorized. Use of FD or AP providing RNAV track guidance required during simultaneous operations. LNAV procedure NA during simultaneous operations. For uncompensated Baro-VNAV systems, LNAV/VNAV NA below -6°C or above 54°C.</p>	<p>MISSED APPROACH: Climb to 3000 direct ENAVE and on track 151° to TACKE and hold.</p>
-----------	---	---

D-ATIS 120.15	REGIONAL APP CON NORTH 124.3 282.275 SOUTH 125.2 343.65	LOVE TOWER 123.7 239.3	GND CON 121.75 348.6	CLNC DEL 127.9	CPDLC
-------------------------	---	----------------------------------	--------------------------------	--------------------------	-------

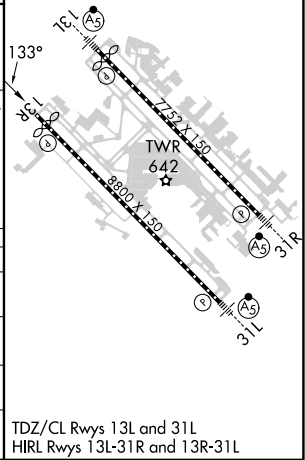


SC-2, 22 FEB 2024 to 21 MAR 2024

SC-2, 22 FEB 2024 to 21 MAR 2024



ELEV 487	D TDZE 479
----------	-------------------



CATEGORY	A	B	C	D
LPV DA		679/40	200 (200-¾)	
LNAV/VNAV DA		834/60	355 (400-1¼)	
LNAV MDA	980/55	501 (500-1)	980-1⅓	501 (500-1⅓)
C CIRCLING	1080-1 593 (600-1)	1140-1 653 (700-1)	1220-2 733 (800-2)	1520-3 1033 (1100-3)

TDZ/CL Rwy 13L and 31L
HIRL Rwy 13L-31R and 13R-31L