

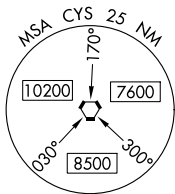
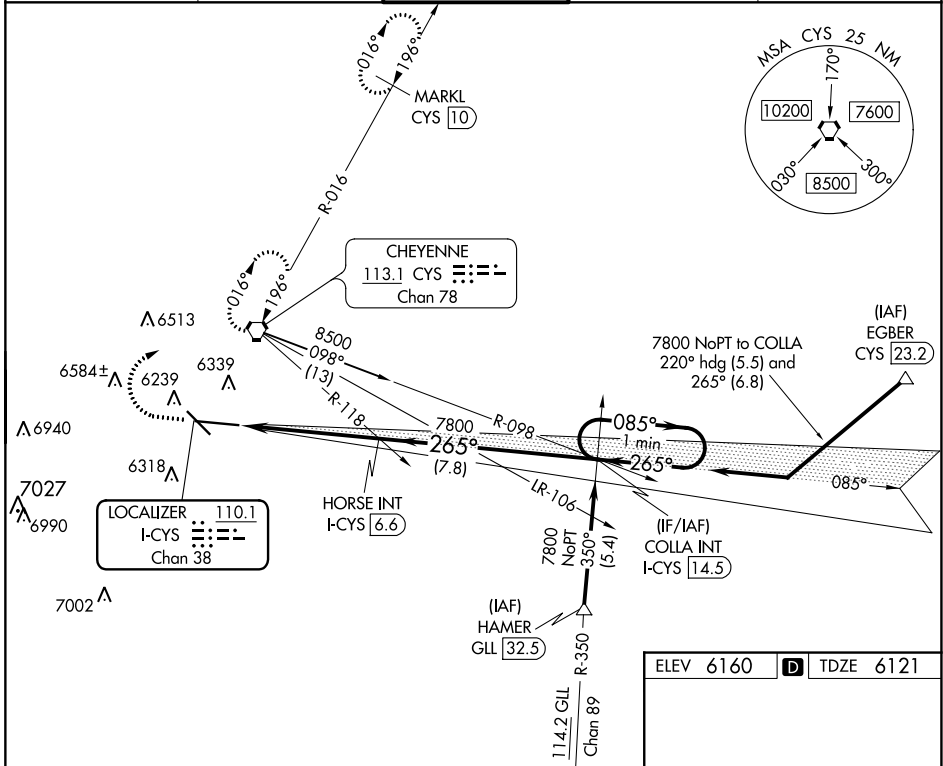
LOC/DME I-CYS <b>110.1</b> Chan <b>38</b>	APP CRS <b>265°</b>	Rwy ldg TDZE Apt Elev	<b>7985</b> <b>6121</b> <b>6160</b>
---	------------------------	-----------------------------	---

# ILS or LOC RWY 27

CHEYENNE RGNL/JERRY OLSON FLD (CYS)

<b>⚠</b> # RVR 1800 authorized with the use of FD or AP ASR/PAR or HUD to DA.	<b>MALSR</b> 	<b>MISSED APPROACH:</b> Climb to 6800, then climbing right turn to 8000 direct CYS VORTAC and hold, continue climb-in-hold to 8000 (TACAN aircraft continue on CYS VORTAC R-016 to MARKL/CYS 10 DME and hold N, RT, 196° inbound).
---	------------------	--

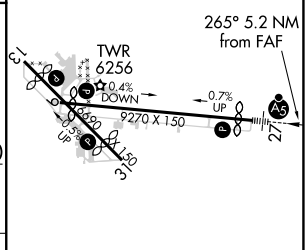
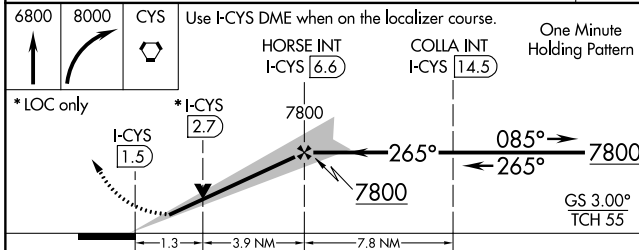
<b>ATIS</b> <b>134.425 278.3</b>	<b>CHEYENNE APP CON</b> ★ <b>124.55 263.075</b>	<b>CHEYENNE TOWER</b> ★ <b>118.7 (CTAF) 0 257.8</b>	<b>GND CON</b> <b>121.9 254.275</b>	<b>UNICOM</b> <b>122.95</b>
-------------------------------------	--	--	--	--------------------------------



NW-1, 22 FEB 2024 to 21 MAR 2024

NW-1, 22 FEB 2024 to 21 MAR 2024

ELEV 6160	<b>D</b> TDZE 6121
-----------	--------------------



CATEGORY	A	B	C	D
S-ILS 27 #	6321/24		200 (200-½)	
S-LOC 27	6560/24 439 (400-½)		6560/40 439 (400-¾)	
<b>C</b> CIRCLING	6640-1 480 (500-1)		6900-2 740 (800-2) 6920-2½ 760 (800-2½)	

REIL Rwy 9, 13, and 31 <b>⓪</b>
HIRL Rwy 9-27 <b>⓪</b>
MIRL Rwy 13-31 <b>⓪</b>
FAF to MAP 5.2 NM
Knots: 60 90 120 150 180
Min:Sec: 5:12 3:28 2:36 2:05 1:44

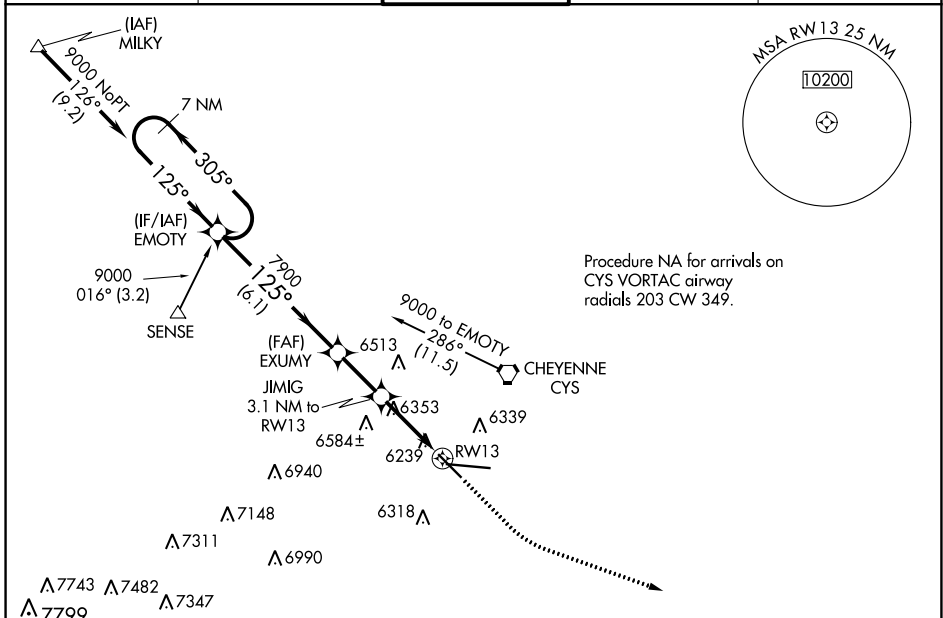
WAAS CH <b>56609</b> <b>W13A</b>	APP CRS <b>125°</b>	Rwy Idg <b>4830</b> TDZE <b>6155</b> Apt Elev <b>6160</b>
--	------------------------	---

# RNAV (GPS) RWY 13

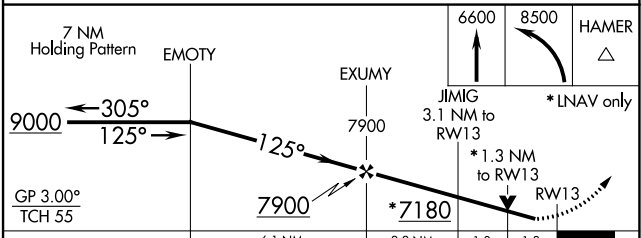
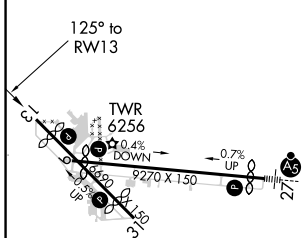
CHEYENNE RGNL/JERRY OLSON FLD (CYS)

RNP APCH.	<p><b>▼</b> For uncompensated Baro-VNAV systems, LNAV/VNAV NA below -24°C or above 45°C. Rwy 13 helicopter visibility reduction below 3/4 SM NA.</p> <p><b>▲</b> ASR/PAR</p>	MISSED APPROACH: Climb to 6600, then climbing left turn to 8500 direct HAMER and hold.
-----------	--	--

ATIS <b>134.425 278.3</b>	CHEYENNE APP CON* <b>124.55 263.075</b>	CHEYENNE TOWER* <b>118.7 (CTAF) 0 257.8</b>	GND CON <b>121.9 254.275</b>	UNICOM <b>122.95</b>
------------------------------	--	--	---------------------------------	-------------------------



ELEV 6160	<b>D</b>	TDZE 6155
-----------	----------	-----------



CATEGORY	A	B	C	D
LPV DA	6405-3/4 250 (300-3/4)			
LNAV/VNAV DA	6419-7/8 264 (300-7/8)			
LNAV MDA	6620-1	465 (500-1)	6620-1 3/8	465 (500-1 3/8)
<b>C</b> CIRCLING	6640-1	480 (500-1)	6900-2 740 (800-2)	6920-2 1/2 760 (800-2 1/2)

CHEYENNE, WYOMING  
Amdt 2A 28FEB19

41°09'N-104°49'W

# RNAV (GPS) RWY 13

NW-1, 22 FEB 2024 to 21 MAR 2024

NW-1, 22 FEB 2024 to 21 MAR 2024

WAAS CH <b>70307</b> <b>W27A</b>	APP CRS <b>265°</b>	Rwy ldg TDZE Apt Elev	<b>7985</b> <b>6121</b> <b>6160</b>
--	------------------------	-----------------------------	---

# RNAV (GPS) RWY 27

CHEYENNE RGNL/JERRY OLSON FLD (CYS)

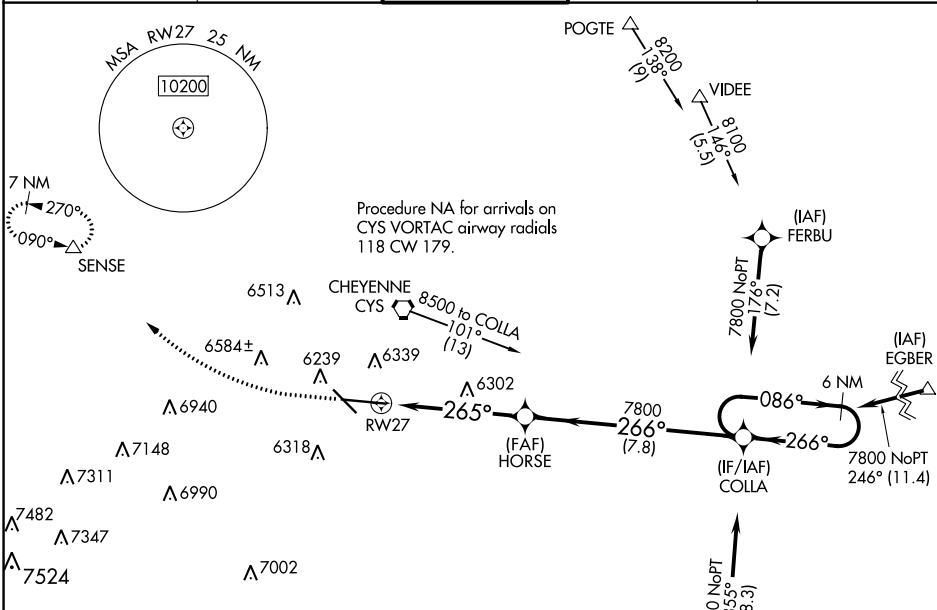
RNP APCH

For uncompensated Baro-VNAV systems, LNAV/VNAV NA below -24°C or above 45°C. For inop ALS, increase LNAV/VNAV all Cnts visibility to RVR 4000.  
# RVR 1800 authorized with use of FD or AP or HUD to DA.



MISSED APPROACH: Climb to 6600, then climbing right turn to 10400 direct SENSE and hold, continue climb-in-hold to 10400.

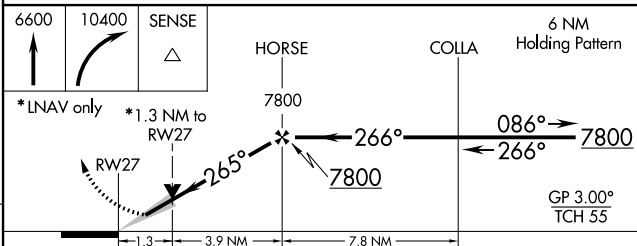
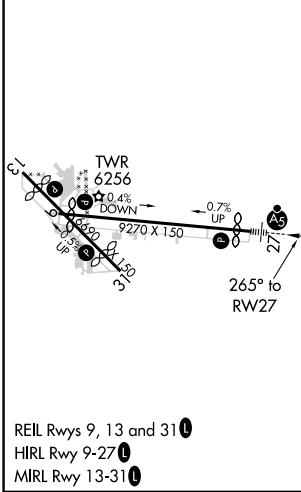
ATIS <b>134.425 278.3</b>	CHEYENNE APP CON* <b>124.55 263.075</b>	CHEYENNE TOWER* <b>118.7 (CTAF) 257.8</b>	GND CON <b>121.9 254.275</b>	UNICOM <b>122.95</b>
------------------------------	--	--	---------------------------------	-------------------------



NW-1, 22 FEB 2024 to 21 MAR 2024

NW-1, 22 FEB 2024 to 21 MAR 2024

ELEV 6160	<b>D</b>	TDZE 6121
-----------	----------	-----------



CATEGORY	A	B	C	D
LPV DA#		6321/24	200 (200-1/2)	
LNAV/VNAV DA		6376/24	255 (300-1/2)	
LNAV MDA	6560/24	439 (400-1/2)	6560/40	439 (400-3/4)
<b>C</b> CIRCLING	6640-1	480 (500-1)	6900-2 740 (800-2)	6920-2 1/2 760 (800-2 1/2)

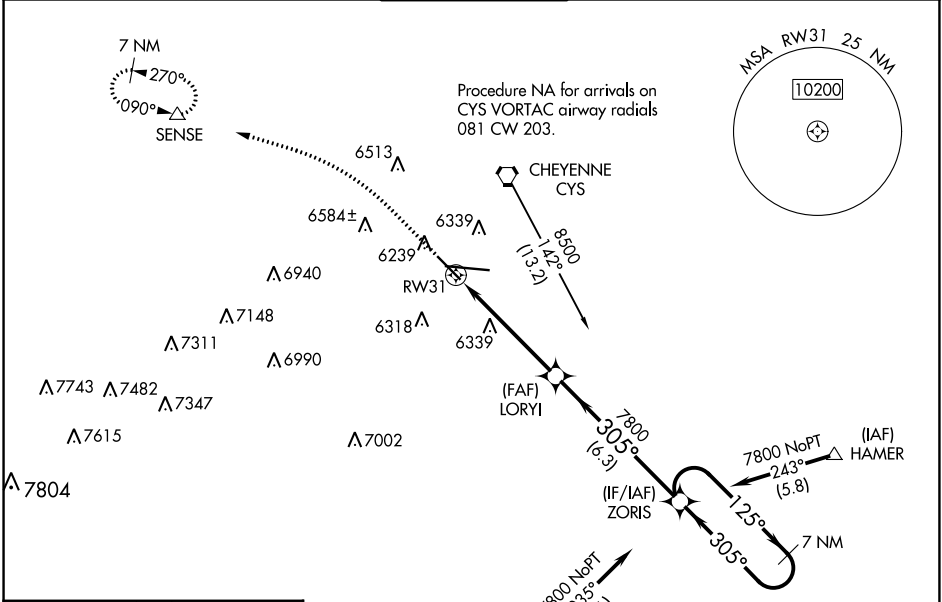
WAAS CH <b>99609</b> <b>W31A</b>	APP CRS <b>305°</b>	Rwy Idg TDZE Apt Elev	<b>4880</b> <b>6147</b> <b>6160</b>
--	------------------------	-----------------------------	---

# RNAV (GPS) RWY 31

CHEYENNE RGNL/JERRY OLSON FLD (CYS)

RNP APCH.	MISSED APPROACH: Climb to 6600, then climbing left turn to 10400 direct SENSE and hold, continue climb-in-hold to 10400.
<b>T</b> For uncompensated Baro-VNAV systems, LNAV/VNAV NA below -24°C or above 45°C.	
ASR/PAR	

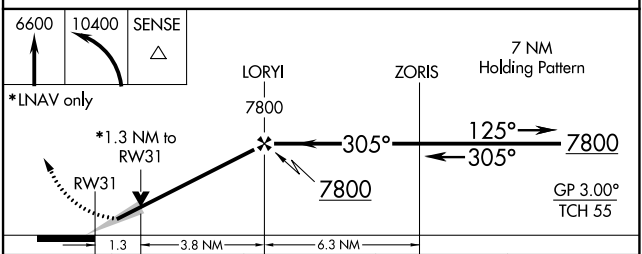
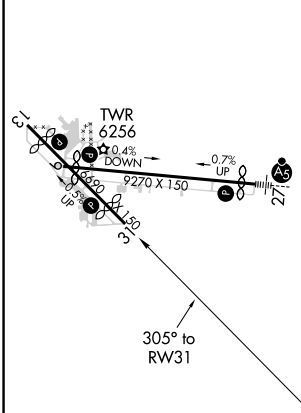
ATIS <b>134.425 278.3</b>	CHEYENNE APP CON* <b>124.55 263.075</b>	CHEYENNE TOWER* <b>118.7(CTAF) 257.8</b>	GND CON <b>121.9 254.275</b>	UNICOM <b>122.95</b>
------------------------------	--	---	---------------------------------	-------------------------



NW-1, 22 FEB 2024 to 21 MAR 2024

NW-1, 22 FEB 2024 to 21 MAR 2024

ELEV 6160	<b>D</b>	TDZE 6147
-----------	----------	-----------



CATEGORY	A	B	C	D
LPV DA		6397- <sup>3</sup> / <sub>4</sub>	250 (300- <sup>3</sup> / <sub>4</sub> )	
LNAV/VNAV DA		6458- <sup>7</sup> / <sub>8</sub>	311 (300- <sup>7</sup> / <sub>8</sub> )	
LNAV MDA	6600-1	453 (500-1)	6600-1 <sup>3</sup> / <sub>8</sub>	453 (500-1 <sup>3</sup> / <sub>8</sub> )
<b>C</b> CIRCLING	6640-1	480 (500-1)	6900-2 740 (800-2)	6920-2 <sup>1</sup> / <sub>2</sub> 760 (800-2 <sup>1</sup> / <sub>2</sub> )

WAAS CH <b>73009</b> <b>W09A</b>	APP CRS <b>085°</b>	Rwy Idg TDZE Apt Elev	<b>7985</b> <b>6144</b> <b>6160</b>
--	------------------------	-----------------------------	---

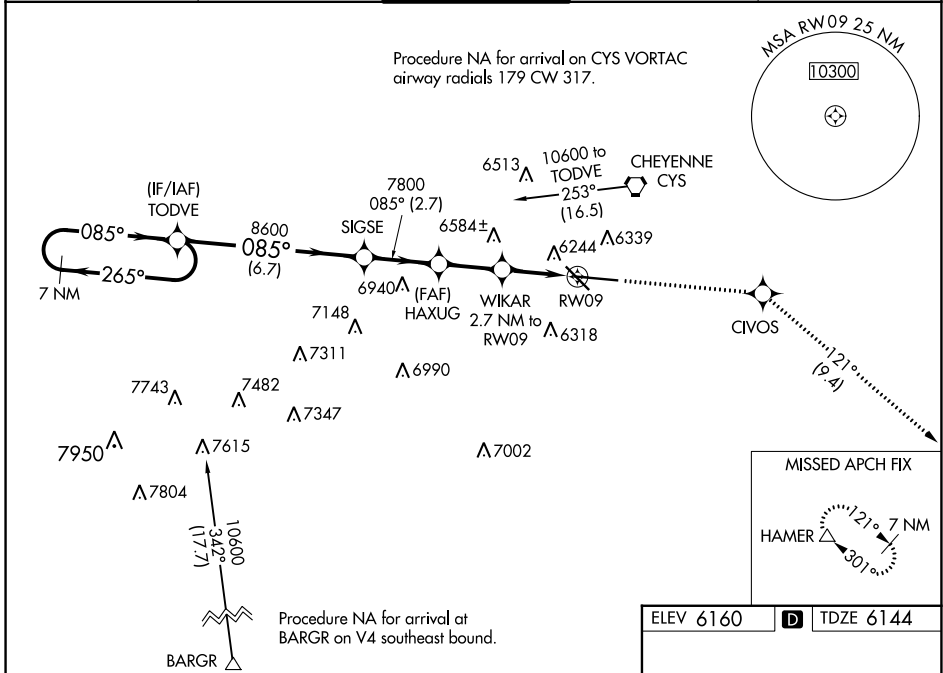
# RNAV (GPS) RWY 9

CHEYENNE RGNL/JERRY OLSON FLD (CYS)

**⚠** For uncompensated Baro-VNAV systems, LNAV/VNAV NA below -27°C (-16°F) or above 36°C (96°F). DME/DME RNP-0.3 NA. Rwy 9 helicopter visibility reduction below ¾ SM NA.

MISSED APPROACH: Climb to 8500 direct CIVOS and on track 121° to HAMER and hold.

ATIS <b>134.425 278.3</b>	CHEYENNE APP CON* <b>124.55 263.075</b>	<b>CHEYENNE TOWER*</b> <b>118.7(CTAF) 0 257.8</b>	GND CON <b>121.9 254.275</b>	UNICOM <b>122.95</b>
------------------------------	--	--	---------------------------------	-------------------------



7 NM Holding Pattern	TODVE	SIGSE	HAXUG	WIKAR	*RNAV only
10600 ← 265°	← 085°	8600	7800	2.7 NM to RW09	*1.1 NM to RW09
GP 3.00° TCH 50	6.7 NM	2.7 NM	2.3 NM	1.6 NM	1.1 NM
CATEGORY	A	B	C	D	
LPV DA	6473-1¼		329 (400-1¼)		
LNAV/VNAV DA	6543-1½		399 (400-1½)		
LNAV MDA	6540-1		396 (400-1)		6540-1¼ 396 (400-1¼)
<b>C</b> CIRCLING	6640-1 480 (500-1)		6900-2 740 (800-2)		6940-2½ 780 (800-2½)

ELEV 6160 **D** TDZE 6144

MISSED APCH FIX  
HAMER

REIL Rwys 9, 13, and 31 **⓪**  
HIRL Rwy 9-27 **⓪**  
MIRL Rwy 13-31 **⓪**

NW-1, 22 FEB 2024 to 21 MAR 2024

NW-1, 22 FEB 2024 to 21 MAR 2024

VORTAC CYS <b>113.1</b> Chan <b>78</b>	APP CRS <b>196°</b>	Rwy Idg TDZE Apt Elev <b>6160</b>	N/A N/A <b>6160</b>
--	------------------------	--	---------------------------

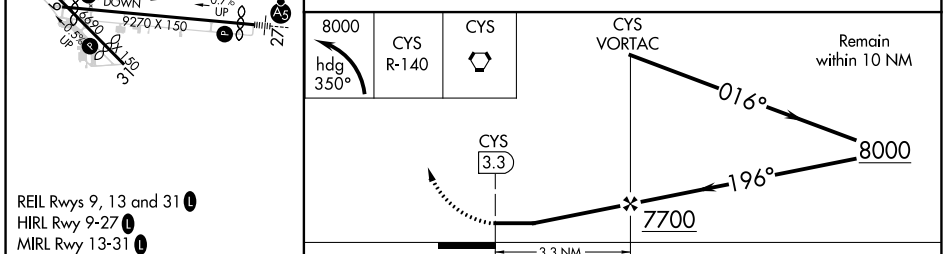
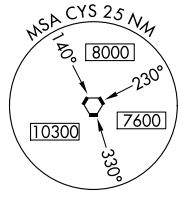
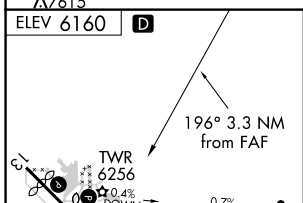
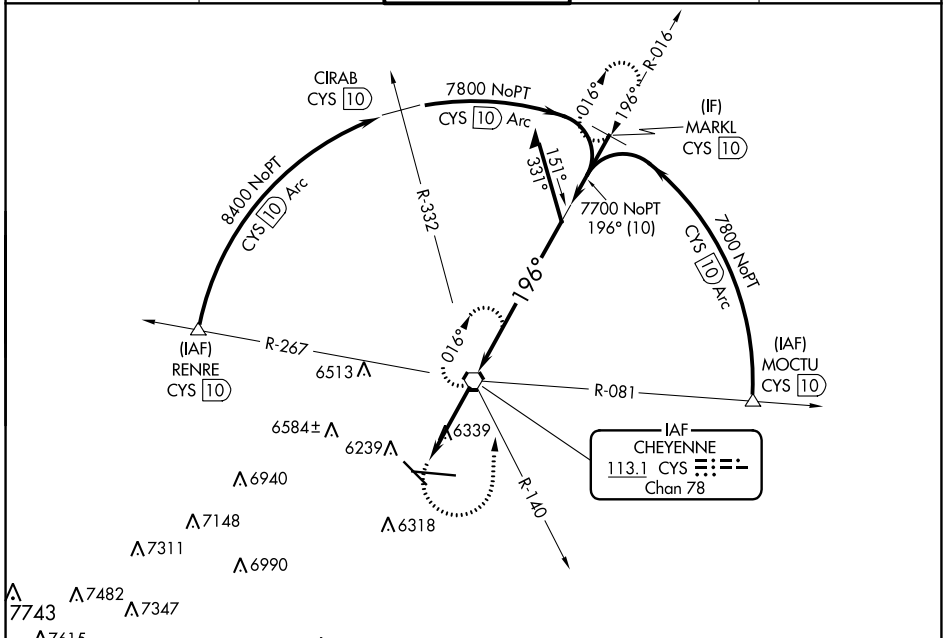
# VOR or TACAN-A

CHEYENNE RGNL/JERRY OLSON FLD (CYS)

**ASR/PAR**

**MISSED APPROACH:** Climbing left turn to 8000 on heading 350° and on CYS VORTAC R-140 to CYS VORTAC and hold, continue climb-in-hold to 8000 (TACAN aircraft continue on CYS VORTAC R-016 to MARKL/10 DME and hold north, right turn, 196° inbound.)

ATIS <b>134.425 278.3</b>	CHEYENNE APP CON * <b>124.55 263.075</b>	CHEYENNE TOWER * <b>118.7 (CTAF) 0 257.8</b>	GND CON <b>121.9 254.275</b>	UNICOM <b>122.95</b>
------------------------------	---	---	---------------------------------	-------------------------



FAF to MAP 3.3 NM					CATEGORY	A	B	C	D
Knots	60	90	120	150	180	6640-1	480 (500-1)	6900-2 740 (800-2)	6940-2½ 780 (800-2½)
Min:Sec	3:18	2:12	1:39	1:19	1:06	<b>CIRCLING</b>			

NW-1, 22 FEB 2024 to 21 MAR 2024

NW-1, 22 FEB 2024 to 21 MAR 2024