

NDB VOF	APP CRS	Rwy Idg	5500
370	275°	TDZE	809
		Apt Elev	820

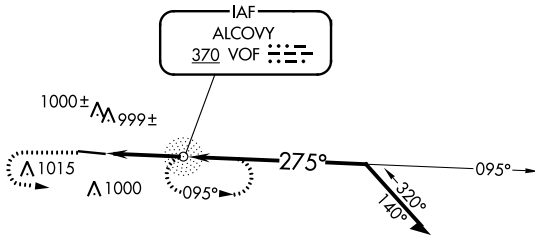
NDB RWY 28

COVINGTON MUNI (CVC)

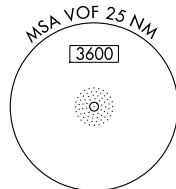
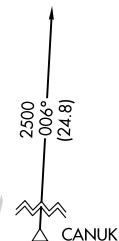
<p>▼ Helicopter visibility reduction below 3/4 SM NA. When local altimeter setting not received, use Lawrenceville altimeter setting and increase all MDA 100 feet and S-28 Cats C/D visibilities 3/8 mile and Circling Cat C visibility 1/4 mile.</p>	<p>MALSRL</p>	<p>MISSED APPROACH: Climb to 2000 then climbing left turn to 2500 direct VOF NDB and hold.</p>
---	---------------	--

AWOS-3 118.725	ATLANTA APP CON 128.575 343.675	CLNC DEL 119.875	UNICOM 123.0 (CTAF)
--------------------------	---	----------------------------	-------------------------------

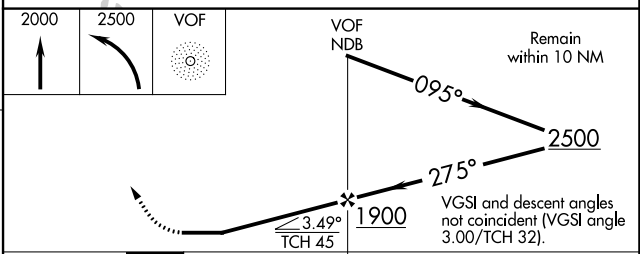
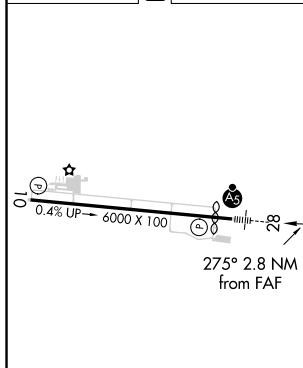
Λ 2049



Λ 1208



ELEV 820	D	TDZE 809
----------	----------	----------



MIRL Rwy 10-28

FAF to MAP 2.8 NM

Knots	60	90	120	150	180
Min:Sec	2:48	1:52	1:24	1:07	0:56

CATEGORY	A	B	C	D
S-28	1300-1	491 (500-1)	1300-1 3/8	491 (500-1 3/8)
CIRCLING	1320-1 500 (500-1)	1360-1 540 (600-1)	1380-1 1/2 560 (600-1 1/2)	1380-2 560 (600-2)

APP CRS **100°**
 Rwy Idg **5800**
 TDZE **795**
 Apt Elev **809**

RNAV (GPS) RWY 10
 COVINGTON MUNI (CVC)

▽ DME/DME RNP-0.3 NA. Helicopter visibility reduction below ¾ SM NA.
△ NA When local altimeter setting not received, use Lawrenceville altimeter setting and increase all MDA 100 feet and LNAV Cat C and D visibility ¼ mile, and Circling Cat C visibility ¼ mile.

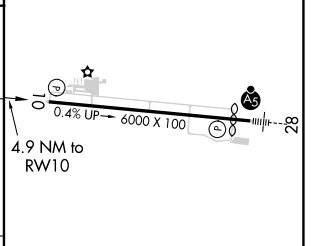
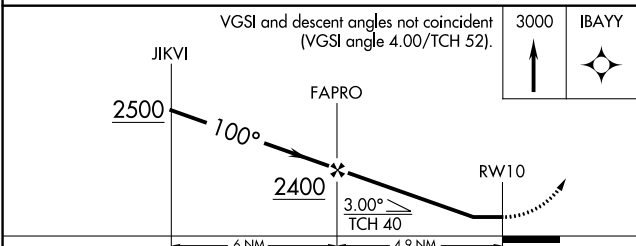
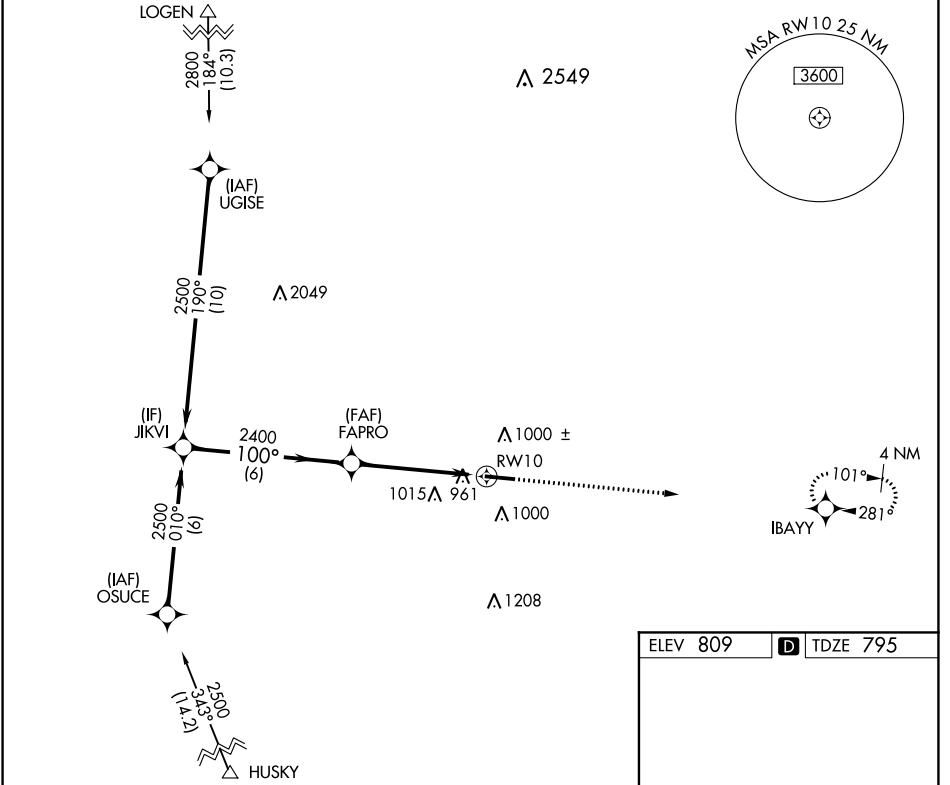
MISSED APPROACH:
 Climb to 3000 direct IBAYY and hold.

AWOS-3
118.725

ATLANTA APP CON
128.575 343.675

CLNC DEL
119.875

UNICOM
123.0 (CTAF) 0



CATEGORY	A	B	C	D
LNAV MDA	1220-1	425 (500-1)	1220-1¼	425 (500-1¼)
CIRCLING	1300-1 491 (500-1)	1360-1 551 (600-1)	1360-1½ 551 (600-1½)	1360-2 551 (600-2)

MRL Rwy 10-28 0

SE-4, 15 JUL 2021 to 12 AUG 2021

SE-4, 15 JUL 2021 to 12 AUG 2021

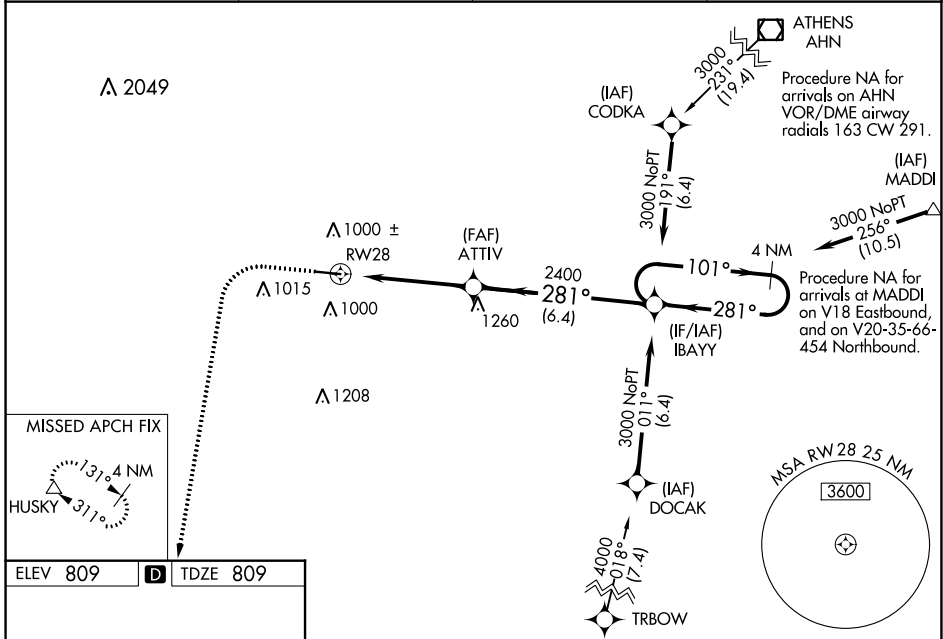
WAAS CH 72710 W28A	APP CRS 281°	Rwy Idg TDZE 809 Apt Elev 809	5500
--	------------------------	---	-------------

RNAV (GPS) RWY 28

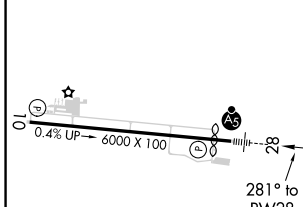
COVINGTON MUNI (CVC)

<p>NA Baro-VNAV NA when using Lawrenceville altimeter setting. For uncompensated Baro-VNAV systems, LNAV/VNAV NA below -16°C (3°F) or above 54°C (130°F). DME/DME RNP-0.3 NA. Helicopter visibility reduction below ¼ SM NA. When local altimeter setting not received, use Lawrenceville altimeter setting and increase all DA 85 feet, all MDA 100 feet, increase LPV and LNAV/VNAV, LNAV Cat C and D visibility ¼ mile, increase Circling Cat C visibility ¼ mile. VDP NA when using Lawrenceville altimeter setting.</p>	<p>MALS R</p>	<p>MISSED APPROACH: Climb to 3000 then climbing left turn to 3000 direct HUSKY and hold.</p>
---	----------------------	---

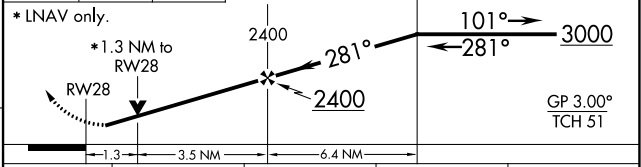
AWOS-3 118.725	ATLANTA APP CON 128.575 343.675	CLNC DEL 119.875	UNICOM 123.0 (CTAF)
--------------------------	---	----------------------------	-------------------------------



ELEV 809	D	TDZE 809
----------	----------	----------



1300	3000	HUSKY	VGSI and RNAV glidepath not coincident (VGSI angle 3.00/TCH 32).
		ATTIV	4 NM Holding Pattern



CATEGORY	A	B	C	D
LPV DA		1079-7/8	270 (300-7/8)	
LNAV/VNAV DA		1223-13/8	414 (500-13/8)	
LNAV MDA	1260-1	451 (500-1)	1260-13/8	451 (500-13/8)
CIRCLING	1300-1 491 (500-1)	1360-1 551 (600-1)	1360-1 1/2 551 (600-1 1/2)	1360-2 551 (600-2)

MIRL Rwy 10-28

SE-4, 15 JUL 2021 to 12 AUG 2021

SE-4, 15 JUL 2021 to 12 AUG 2021

VORTAC ATL 116.9 Chan 116	APP CRS 094°	Rwy Idg TDZE 795 Apt Elev 809
---	------------------------	---

VOR/DME RWY 10

COVINGTON MUNI (CVC)

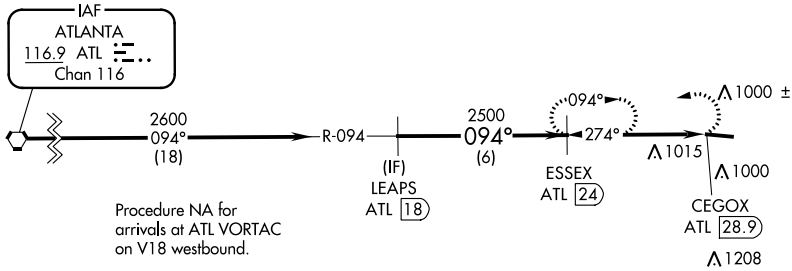
▼ Helicopter visibility reduction below ¾ SM NA. When local altimeter setting not received, use Lawrenceville altimeter setting and increase all MDA 100 feet and Cat C/D and Circling Cat C visibilities ¼ mile.

▲ MISSED APPROACH: Climbing left turn to 3000 on ATL VORTAC R-094 to ESSEX/ATL 24 DME and hold.

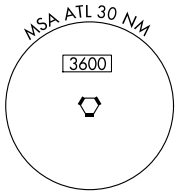
AWOS-3 118.725	ATLANTA APP CON 128.575 343.675	CLNC DEL 119.875	UNICOM 123.0 (CTAF) 0
--------------------------	---	----------------------------	--

▲ 2549

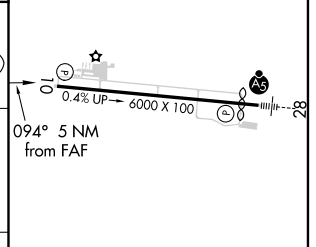
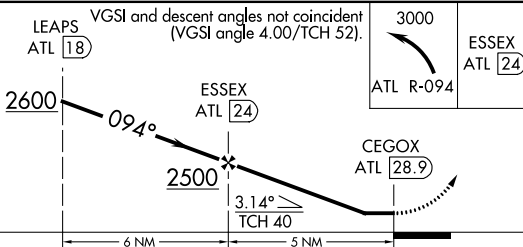
▲ 2049



Procedure NA for arrivals at ATL VORTAC on V18 westbound.



ELEV 809	D TDZE 795
----------	-------------------



CATEGORY	A	B	C	D
S-10	1320-1	525 (600-1)	1320-1½	525 (600-1½)
CIRCLING	1320-1 511 (600-1)	1360-1¼ 551 (600-1¼)	1360-1½ 551 (600-1½)	1360-2 551 (600-2)

MIRL Rwy 10-28 **0**

SE-4, 15 JUL 2021 to 12 AUG 2021

SE-4, 15 JUL 2021 to 12 AUG 2021