

WAAS CH <b>53720</b> <b>W06A</b>	APP CRS <b>060°</b>	Rwy Idg TDZE <b>142</b> Apt Elev <b>144</b>	<b>5008</b>
--	------------------------	---	-------------

# RNAV (GPS) RWY 6

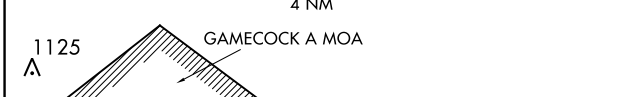
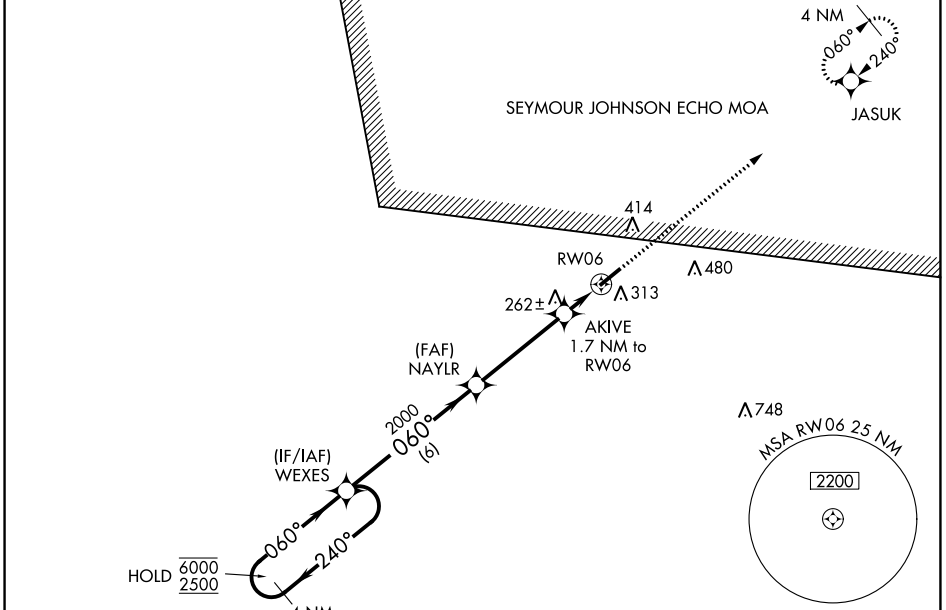
CLINTON-SAMPSON COUNTY (CTZ)

RNP APCH - GPS.

**▽** Rwy 6 helicopter visibility reduction below 3/4 SM NA.  
**⚠** For uncompensated Baro-VNAV systems, LNAV/VNAV NA below -15°C or above 54°C.

MISSED APPROACH:  
 Climb to 2500 direct JASUK and hold.

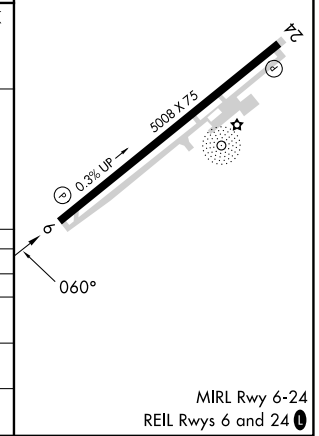
AWOS-3 <b>119.125</b>	FAYETTEVILLE APP CON <b>133.0 290.25</b>	UNICOM <b>122.8 (CTAF) 0</b>
--------------------------	---	---------------------------------



4 NM Holding Pattern	WEXES	NAYLR	AKIVE 1.7 NM to RWY 6	2500	JASUK
6000 2500	2000	700	1.1 NM to RWY 6		
GP 3.00° TCH 39	6 NM	4.1 NM	0.6	1.1	

ELEV 144	TDZE 142
----------	----------

CATEGORY	A	B	C	D
LPV DA		392-3/4	250 (300-3/4)	
LNAV/VNAV DA		545-1 1/8	403 (500-1 1/8)	
LNAV MDA		520-1	378 (400-1)	
CIRCLING	680-1	780-1	840-2	840-2 1/4
	536 (600-1)	636 (700-1)	696 (700-2)	696 (700-2 1/4)



SE-2, 22 FEB 2024 to 21 MAR 2024

SE-2, 22 FEB 2024 to 21 MAR 2024

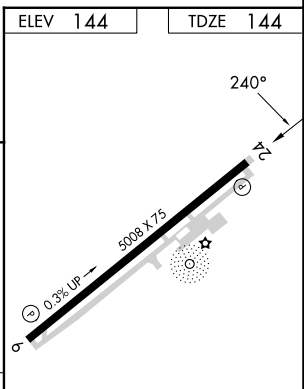
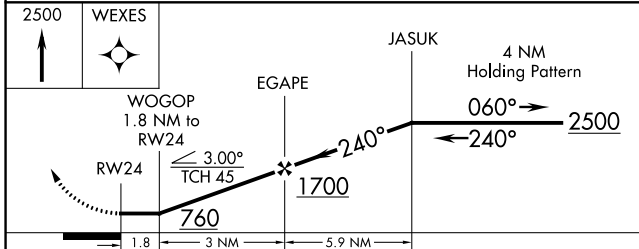
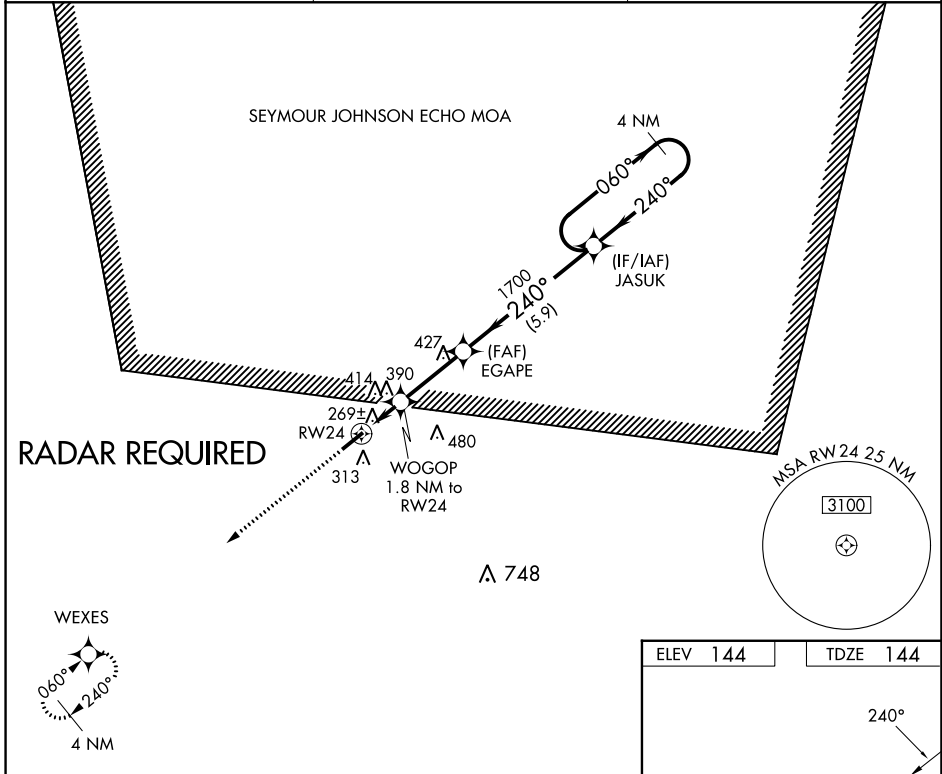
WAAS CH <b>99321</b> <b>W24B</b>	APP CRS <b>240°</b>	Rwy Idg TDZE <b>144</b> Aprt Elev <b>144</b>	<b>5002</b>
--	------------------------	--	-------------

# RNAV (GPS) Y RWY 24

CLINTON-SAMPSON COUNTY (CTZ)

RNP APCH-GPS.	MISSED APPROACH: Climb to 2500 direct WEXES and hold.
---------------	---

AWOS-3 <b>119.125</b>	FAYETTEVILLE APP CON <b>133.0 290.25</b>	UNICOM <b>122.8 (CTAF) 0</b>
--------------------------	---	---------------------------------



CATEGORY	A	B	C	D
LP MDA	560-1	416 (500-1)	560-1 1/8	416 (500-1 1/8)
RNAV MDA	640-1	496 (500-1)	640-1 3/8	496 (500-1 3/8)
CIRCLING	680-1 536 (600-1)	780-1 636 (700-1)	840-2 696 (700-2)	840-2 1/4 696 (700-2 1/4)

SE-2, 22 FEB 2024 to 21 MAR 2024

SE-2, 22 FEB 2024 to 21 MAR 2024

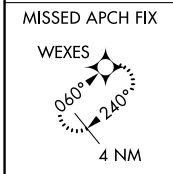
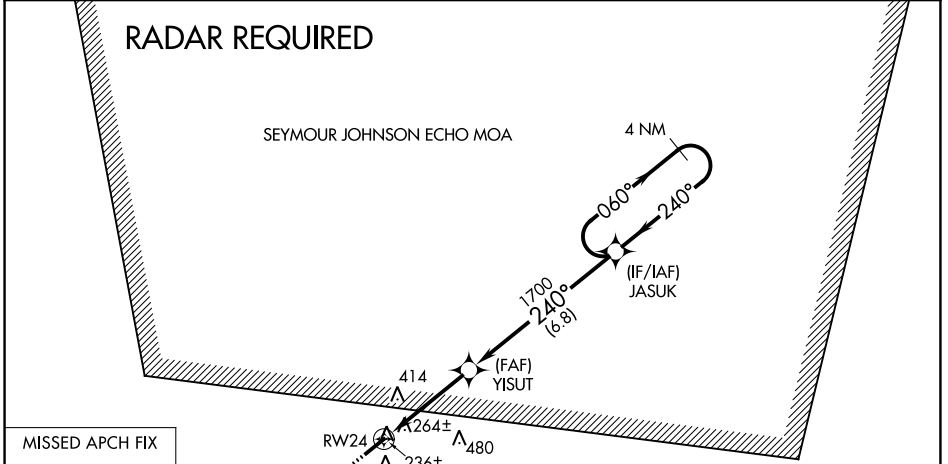
WAAS CH <b>82620</b> <b>W24A</b>	APP CRS <b>240°</b>	Rwy Idg TDZE Apt Elev	<b>5008</b> <b>144</b> <b>144</b>
--	------------------------	-----------------------------	---

# RNAV (GPS) Z RWY 24

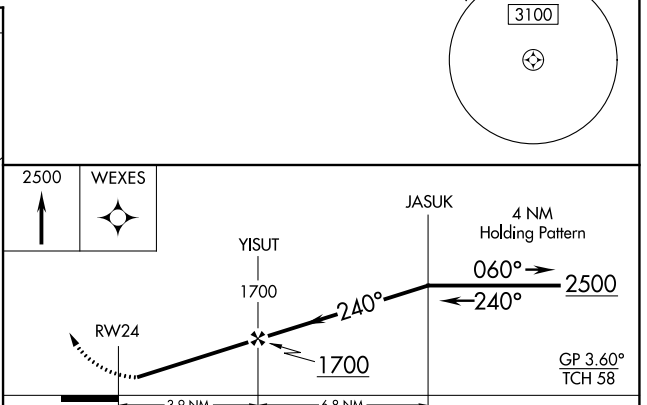
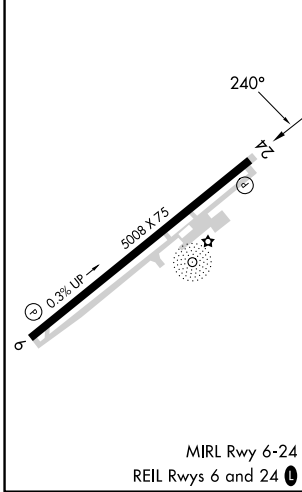
CLINTON-SAMPSON COUNTY (CTZ)

RNP APCH-GPS.	MISSED APPROACH: Climb to 2500 direct WEXES and hold.
---------------	---

AWOS-3 <b>119.125</b>	FAYETTEVILLE APP CON <b>133.0 290.25</b>	UNICOM <b>122.8 (CTAF) 0</b>
--------------------------	---	---------------------------------



ELEV 144	TDZE 144
----------	----------

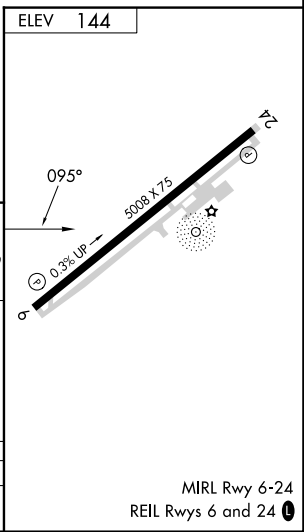
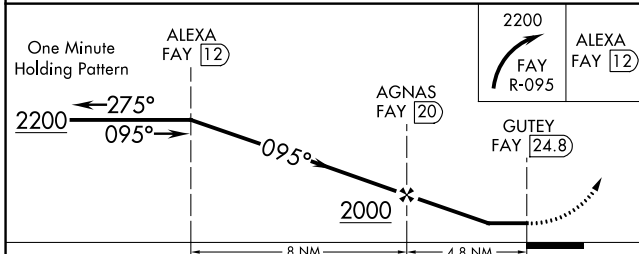
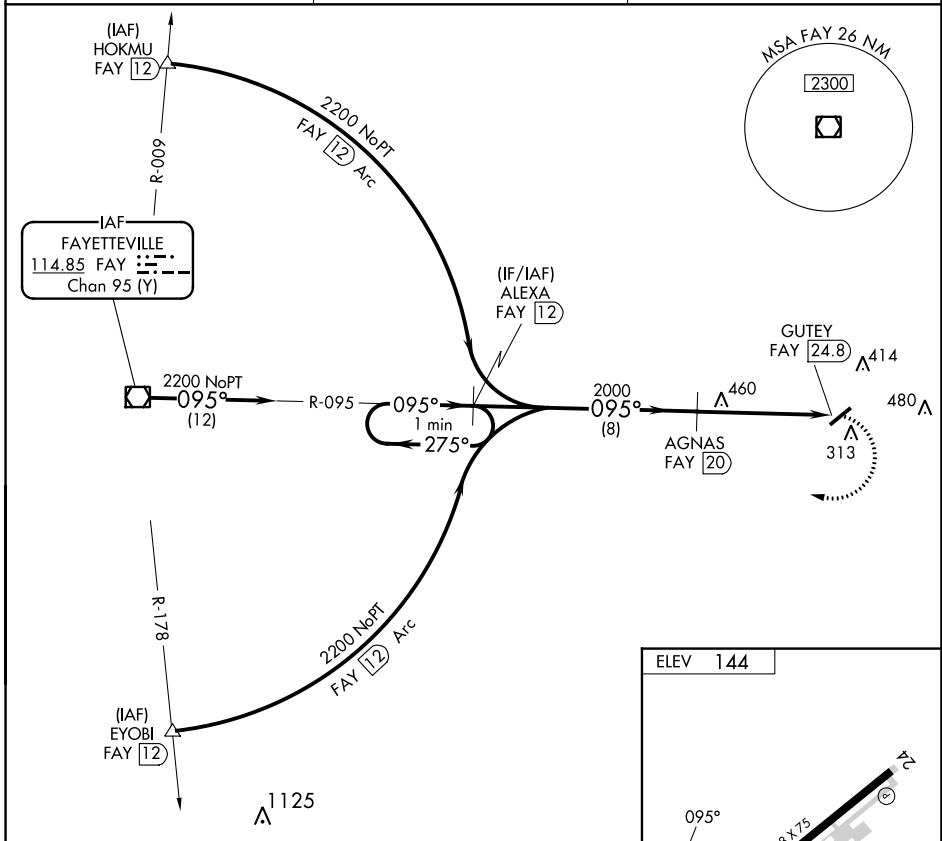


CATEGORY	A	B	C	D
LPV DA	470-1	326 (400-1)		NA
LNAV/VNAV DA	566-1¼	422 (500-1¼)		NA

VOR/DME <b>FAY</b> <b>114.85</b> Chan <b>95 (Y)</b>	APP CRS <b>095°</b>	Rwy Idg TDZE Apt Elev	<b>N/A</b> <b>N/A</b> <b>144</b>
---	------------------------	-----------------------------	--

**VOR/DME-A**  
CLINTON-SAMPSON COUNTY (CTZ)

<p><b>▼</b> When local altimeter setting not received, use Kenansville altimeter setting and increase all MDA 60 feet, and increase Circling Cats C/D visibility ¼ mile.</p>	<p><b>▲</b> MISSED APPROACH: Climbing right turn to 2200 on <b>FAY</b> VOR/DME R-095 to <b>ALEXA/FAY</b> 12 DME and hold.</p>	
<p>AWOS-3 <b>119.125</b></p>	<p>FAYETTEVILLE APP CON <b>133.0 290.25</b></p>	<p>UNICOM <b>122.8 (CTAF) 0</b></p>



CATEGORY	A	B	C	D
CIRCLING	760-1 616 (700-1)	780-1 636 (700-1)	840-2 696 (700-2)	840-2¼ 696 (700-2¼)

SE-2, 22 FEB 2024 to 21 MAR 2024

SE-2, 22 FEB 2024 to 21 MAR 2024