

WAAS CH 45620 W31A	APP CRS 319°	Rwy Idg TDZE Apt Elev	5001 42 42
--	------------------------	-----------------------------	---------------------------------------

RNAV (GPS) RWY 31

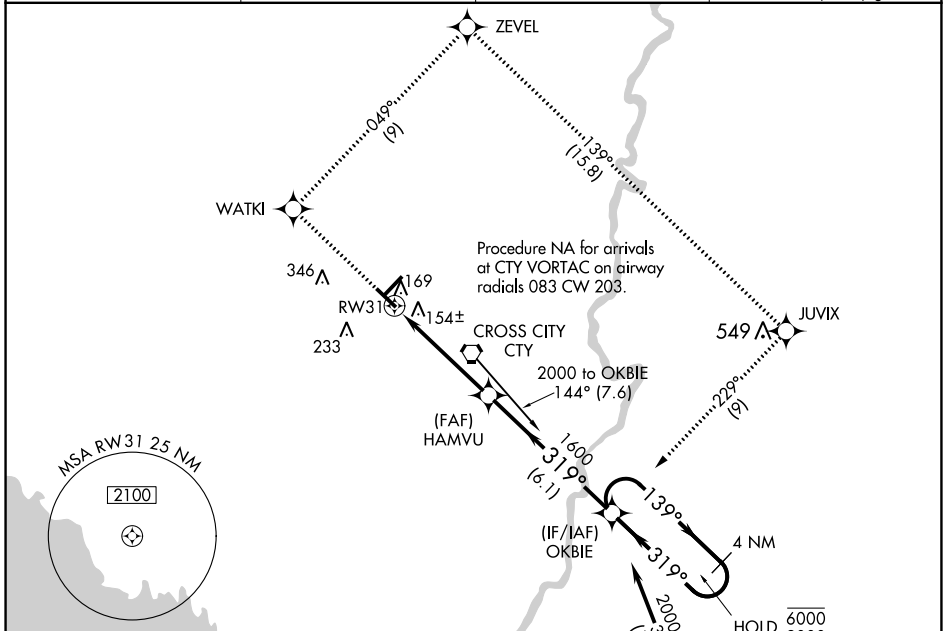
CROSS CITY (CTY)

RNP APCH.

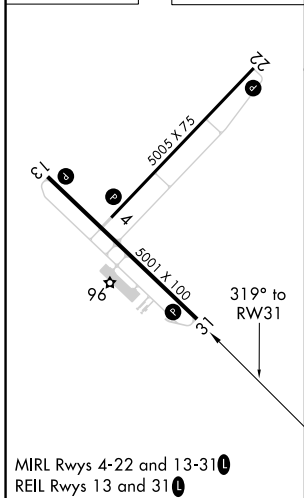
Procedure NA at night. Rwy 31 helicopter visibility reduction below 1 SM NA. Baro-VNAV NA. Use Williston altimeter setting; when not received, use NA Gainesville altimeter setting and increase all DA 25 feet and all MDA 40 feet.

MISSED APPROACH: Climb to 2000 direct WATKI and right turn on track 049° to ZEVEL and on track 139° to JUVIX and right turn on track 229° to OKBIE and hold.

AWOS-3PT 120.775	X60 AWOS-3T 118.425	JACKSONVILLE CENTER 127.8 352.0	UNICOM 122.8 (CTAF)
----------------------------	-------------------------------	---	-------------------------------



ELEV 42	TDZE 42
---------	---------



2000	WATKI	ZEVEL	JUVIX	OKBIE	4 NM Holding Pattern
↑	tr 049°	tr 139°	tr 229°		
VGSI and RNAV glidepath not coincident (VGSI Angle 3.00/TCH 36).					OKBIE
					GP 3.00° TCH 59
4.7 NM		6.1 NM			
CATEGORY	A	B	C	D	
LPV DA	383-1¼		341 (400-1¼)		
LNAV/VNAV DA	546-1¾		504 (600-1¾)		
LNAV MDA	580-1	538 (600-1)	580-1½ 538 (600-1½)	580-1¾ 538 (600-1¾)	

SE-3, 22 FEB 2024 to 21 MAR 2024

SE-3, 22 FEB 2024 to 21 MAR 2024

APP CRS	Rwy Idg	N/A
049°	TDZE	N/A
	Apt Elev	42

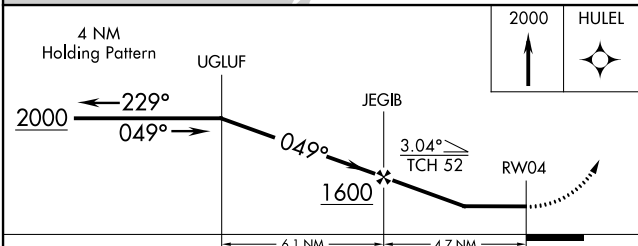
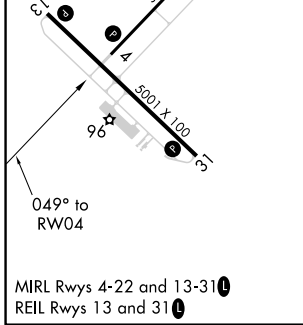
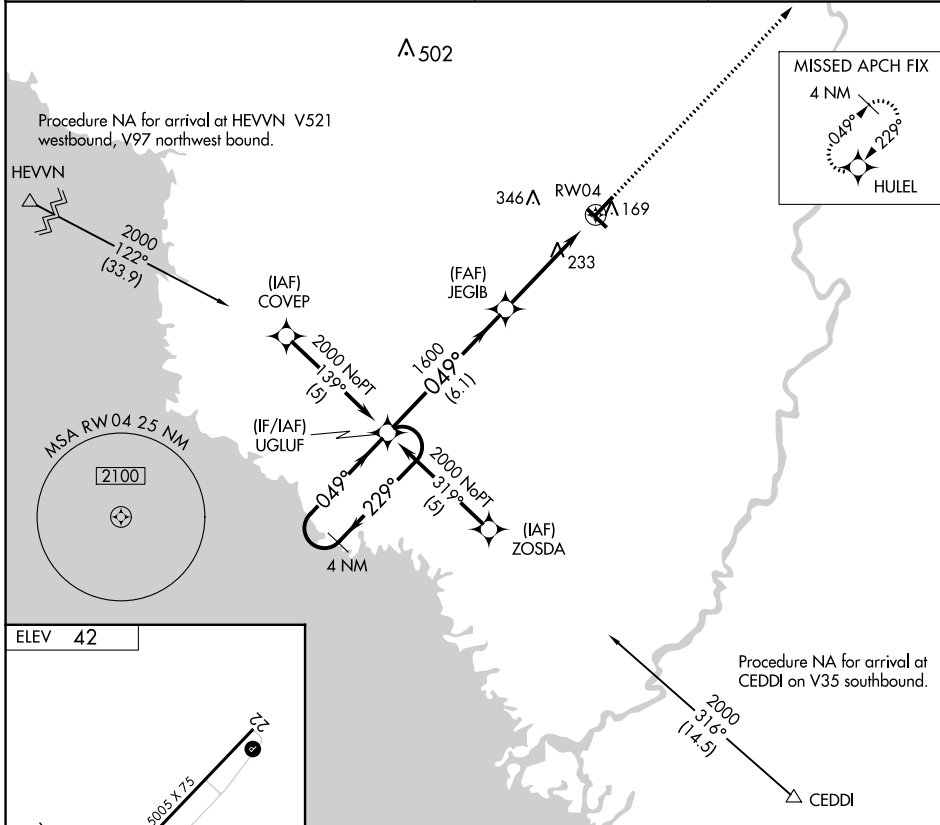
RNAV (GPS)-A

CROSS CITY (CTY)

NA DME/DME RNP-0.3 NA. Helicopter visibility reduction below 1 SM NA. When local altimeter setting not received, use Williston Muni altimeter setting and increase Cat C MDA 80 feet and increase visibility Cat C ¼ SM. Circling to Rwy 4/13/31 NA at night.

MISSED APPROACH: Climb to 2000 direct HULEL and hold.

AWOS-3PT 120.775	X60 AWOS-3T 118.425	JACKSONVILLE CENTER 127.8 352.0	UNICOM 122.8 (CTAF) U
----------------------------	-------------------------------	---	--



CATEGORY	A	B	C	D
CIRCLING	620-1	578 (600-1)	660-1¾ 618 (700-1¾)	740-2¼ 698 (700-2¼)

SE-3, 22 FEB 2024 to 21 MAR 2024

SE-3, 22 FEB 2024 to 21 MAR 2024

APP CRS 229°	Rwy Idg TDZE Apt Elev	N/A N/A 42
------------------------	-----------------------------	---------------------------------------

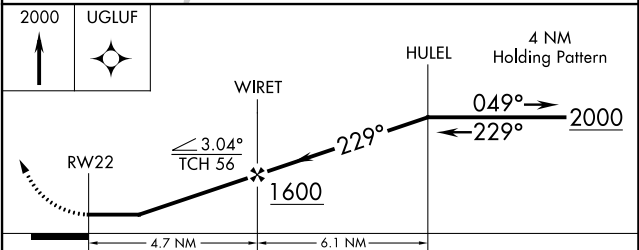
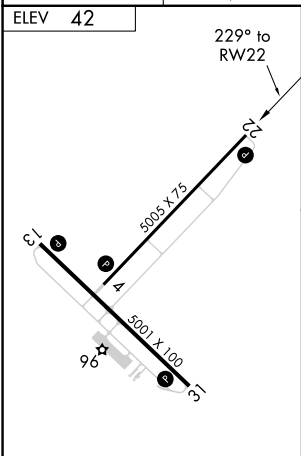
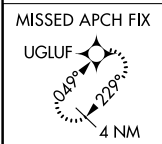
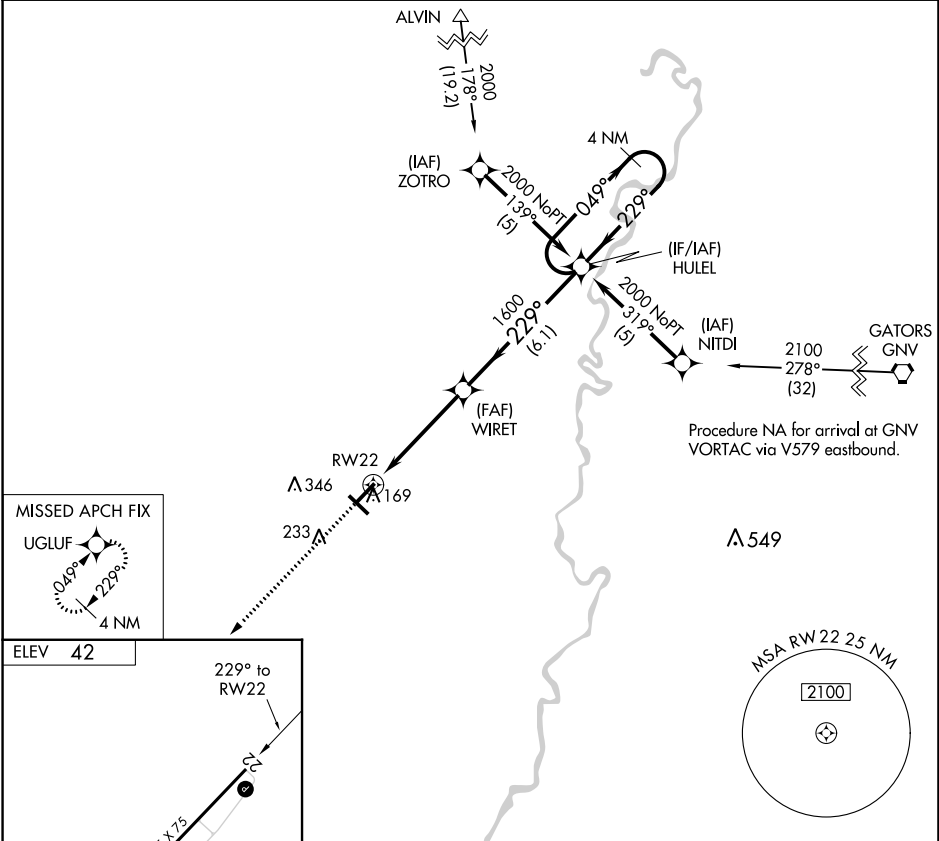
RNAV (GPS)-B

CROSS CITY (CTY)

NA DME/DME RNP-0.3 NA. Helicopter visibility reduction below 1 SM NA. When local altimeter setting not received, use Williston Muni altimeter setting and increase Cat C MDA 80 feet and increase visibility Cat C ¼ SM. Circling to Rwy 4/13/31 NA at night.

MISSED APPROACH:
Climb to 2000 direct UGLUF and hold.

AWOS-3PT 120.775	X60 AWOS-3T 118.425	JACKSONVILLE CENTER 127.8 352.0	UNICOM 122.8 (CTAF)
----------------------------	-------------------------------	---	-------------------------------



CATEGORY	A	B	C	D
CIRCLING	620-1	578 (600-1)	660-1¾ 618 (700-1¾)	740-2¼ 698 (700-2¼)

SE-3, 22 FEB 2024 to 21 MAR 2024

SE-3, 22 FEB 2024 to 21 MAR 2024

VORTAC CTY 112.0 Chan 57	APP CRS 304°	Rwy Idg 5001 TDZE 42 Apt Elev 42
--	------------------------	---

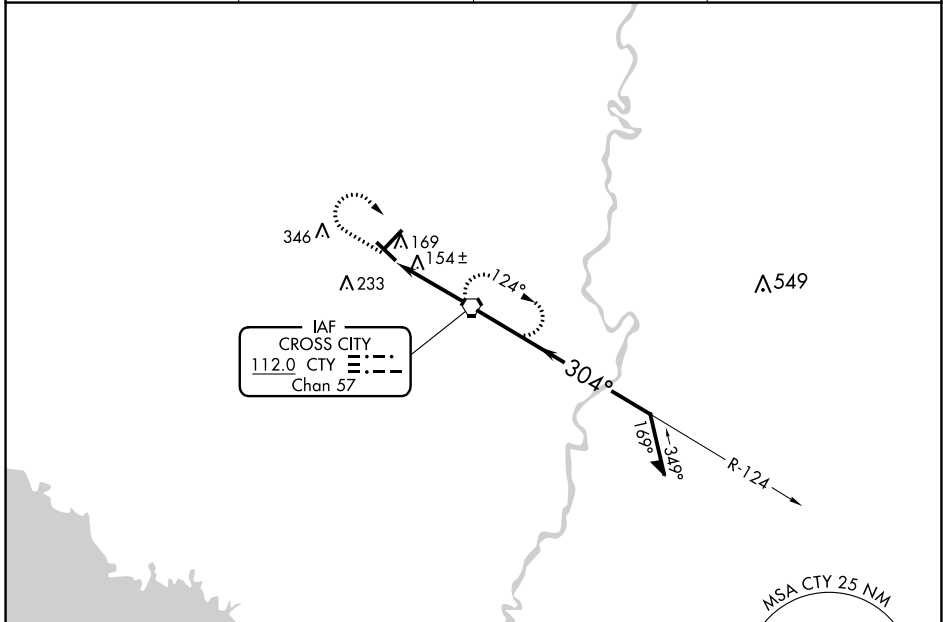
VOR RWY 31

CROSS CITY (CTY)

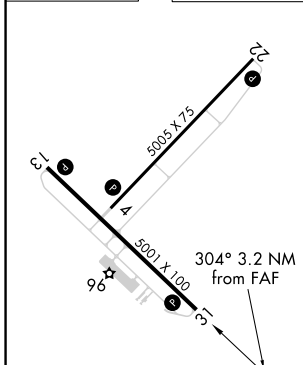
▼ Helicopter visibility reduction below 1 SM NA. When local altimeter setting not received, use Williston Muni altimeter setting and increase Circling Cat C MDA 80 feet and increase visibility Cat C ¼ SM. Rwy 31 Straight-in and Circling and Circling to Rwy 4/13 NA at night.

▲ NA MISSED APPROACH: Climb to 1000 then climbing right turn to 2000 direct CTY VORTAC and hold.

AWOS-3PT 120.775	X60 AWOS-3T 118.425	JACKSONVILLE CENTER 127.8 352.0	UNICOM 122.8 (CTAF) 0
----------------------------	-------------------------------	---	---------------------------------



ELEV 42	TDZE 42
---------	---------



MIRL Rwys 4-22 and 13-31 0
REIL Rwys 13 and 31 0

FAF to MAP 3.2 NM

Knots	60	90	120	150	180
Min:Sec	3:12	2:08	1:36	1:17	1:04



	A	B	C	D
S-31	560-1 518 (600-1)		560-1½ 518 (600-1½)	560-1¾ 518 (600-1¾)
CIRCLING	620-1 578 (600-1)		660-1¾ 618 (700-1¾)	740-2¼ 698 (700-2¼)

SE-3, 22 FEB 2024 to 21 MAR 2024

SE-3, 22 FEB 2024 to 21 MAR 2024