

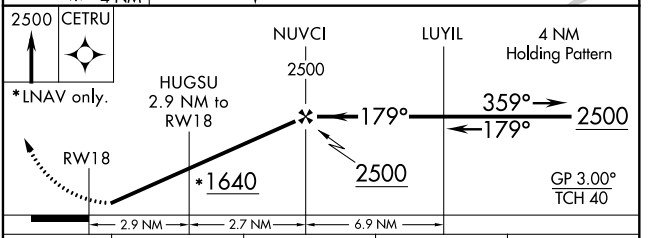
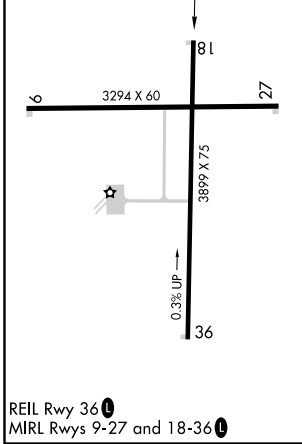
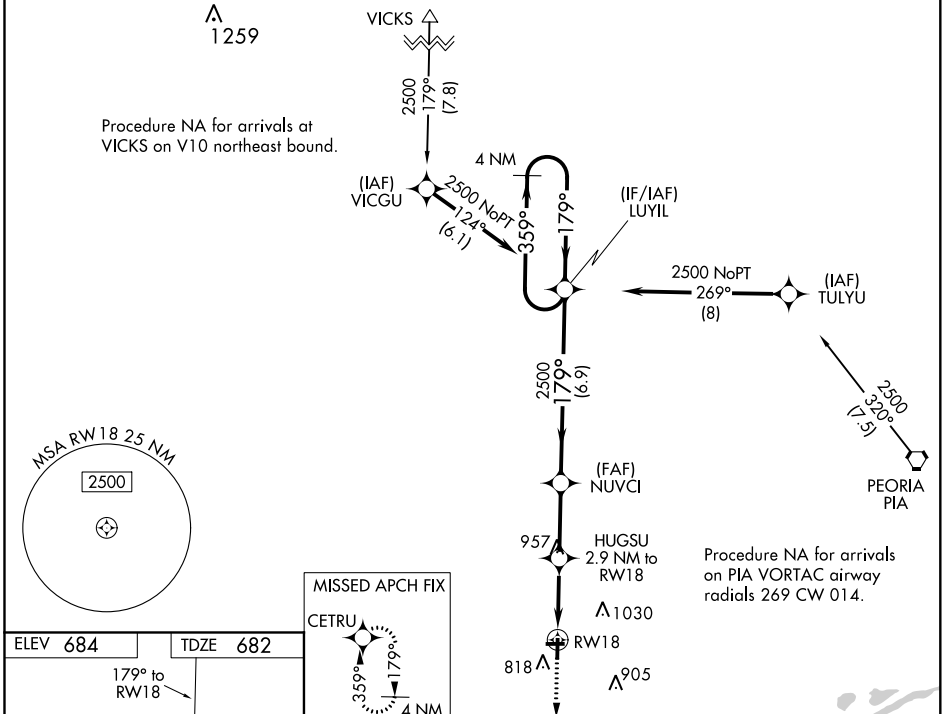
WAAS CH 93931 W18A	APP CRS 179°	Rwy Idg TDZE Apt Elev	3899 682 684
--	------------------------	-----------------------------	---

RNAV (GPS) RWY 18

INGERSOLL (CTK)

RNP APCH-GPS.	Baro VNAV NA. For uncompensated Baro-VNAV systems, LNAV/VNAV NA below -16°C or above 54°C.	MISSED APPROACH: Climb to 2500 direct CETRU and hold.
---------------	--	--

PIA ASOS 126.1 282.2	PEORIA APP CON 124.675 269.2	UNICOM 122.8 (CTAF) 0
--------------------------------	--	---------------------------------



CATEGORY	A	B	C	D
LPV DA	995-1	313 (400-1)		NA
LNAV/VNAV DA	1128-1 ³ / ₈	446 (500-1 ³ / ₈)		NA
LNAV MDA	1280-1	598 (600-1)	1280-1 ³ / ₄ 598 (600-1 ³ / ₄)	NA
CIRCLING	1280-1 596 (600-1)	1440-1 756 (800-1)	1440-2 ¹ / ₄ 756 (800-2 ¹ / ₄)	NA

EC-3, 19 MAY 2022 to 16 JUN 2022

EC-3, 19 MAY 2022 to 16 JUN 2022

WAAS CH 78331 W36A	APP CRS 359°	Rwy Idg TDZE 680 Apt Elev 684	3899
--	------------------------	---	-------------

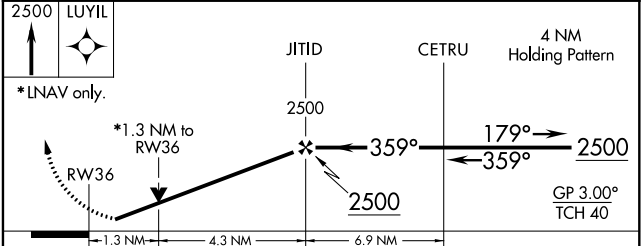
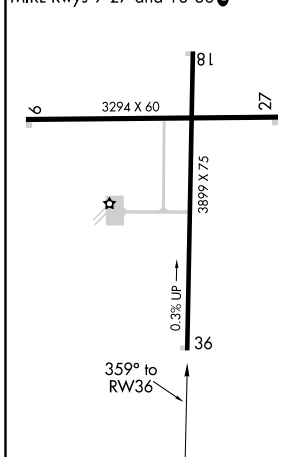
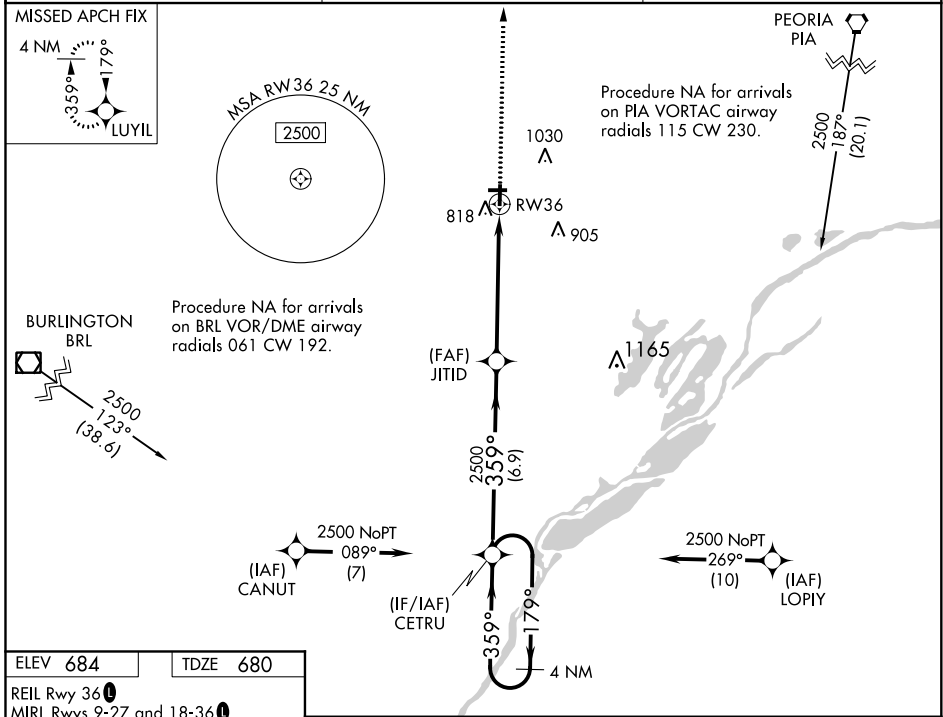
RNAV (GPS) RWY 36

INGERSOLL (CTK)

Baro VNAV NA. For uncompensated Baro-VNAV systems, LNAV/VNAV NA below -16°C (4°F) or above 54°C (130°F). DME/DME RNP-0.3 NA. VDP NA when using General Downing-Peoria Intl altimeter setting.

MISSED APPROACH: Climb to 2500 direct LUYIL and hold.

PIA ASOS 126.1 282.2	PEORIA APP CON 124.675 269.2	UNICOM 122.8 (CTAF) 0
--------------------------------	--	---------------------------------



CATEGORY	A	B	C	D
LPV DA	976-1	296 (300-1)		NA
LNAV/VNAV DA	1044-1	364 (400-1)		NA
LNAV MDA	1180-1	500 (500-1)	1180-1 ³ / ₈ 500 (500-1 ³ / ₈)	NA
CIRCLING	1200-1 516 (600-1)	1440-1 756 (800-1)	1440-2 ¹ / ₄ 756 (800-2 ¹ / ₄)	NA

EC-3, 19 MAY 2022 to 16 JUN 2022

EC-3, 19 MAY 2022 to 16 JUN 2022

CANTON, ILLINOIS

AL-5900 (FAA)

21336

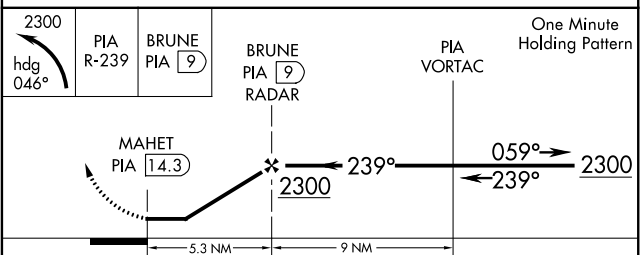
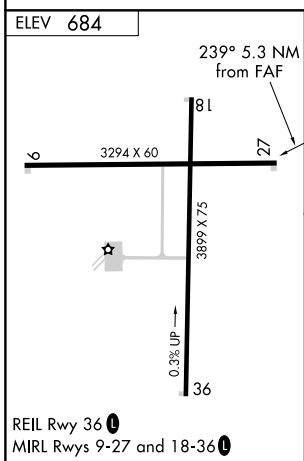
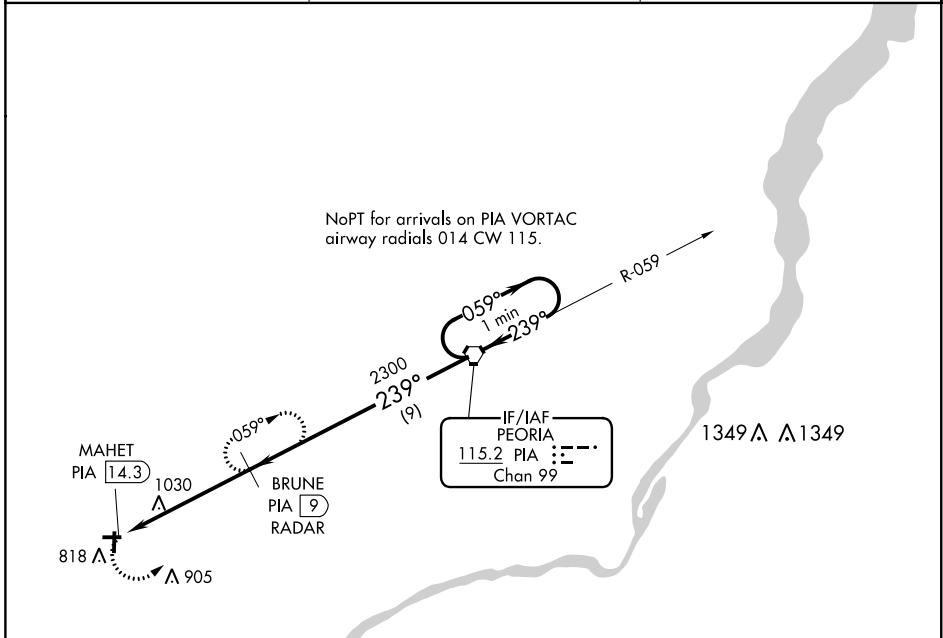
VORTAC PIA 115.2 Chan 99	APP CRS 239°	Rwy Idg TDZE Apt Elev N/A N/A 684
--	------------------------	---

VOR-A
INGERSOLL (CTK)

▽ DME or RADAR required.
△ NA

MISSED APPROACH: Climbing left turn to 2300 via heading 046° and PIA R-239 to BRUNE/PIA 9 DME and hold.

PIA ASOS 126.1 282.2	PEORIA APP CON 124.675 269.2	UNICOM 122.8 (CTAF)
--------------------------------	--	-------------------------------



FAF to MAP 5.3 NM					
Knots	60	90	120	150	180
Min:Sec	5:18	3:32	2:39	2:07	1:46
CATEGORY	A	B	C	D	
CIRCLING	1400-1 716 (800-1)	1440-1 756 (800-1)	1440-2¼ 756 (800-2¼)	NA	

CANTON, ILLINOIS
Amdt 8B 02DEC21

40°34'N-90°04'W

INGERSOLL (CTK)
VOR-A

EC-3, 19 MAY 2022 to 16 JUN 2022

EC-3, 19 MAY 2022 to 16 JUN 2022