

**TOP ALTITUDE:
ASSIGNED BY ATC**

ATIS
121.45
CLNC DEL
118.275
121.8 (when tower closed)
GND CON
121.8
DOWNTOWN TOWER *
119.925 379.3
ST LOUIS DEP CON
123.7 371.875

TAKEOFF MINIMUMS

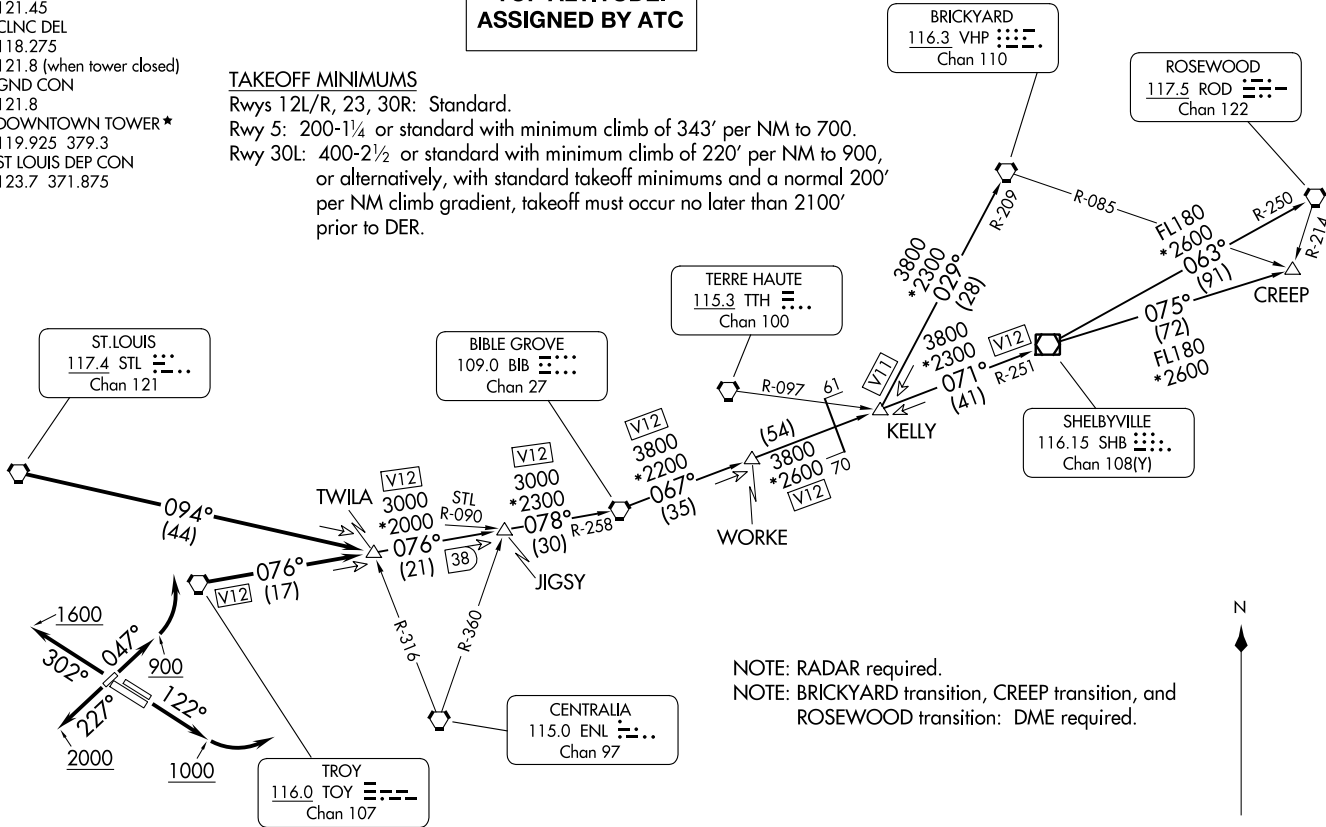
Rwys 12L/R, 23, 30R: Standard.

Rwy 5: 200-1¼ or standard with minimum climb of 343' per NM to 700.

Rwy 30L: 400-2½ or standard with minimum climb of 220' per NM to 900,
or alternatively, with standard takeoff minimums and a normal 200'
per NM climb gradient, takeoff must occur no later than 2100'
prior to DER.

GATEWAY ONE DEPARTURE
(GATWY1.TWILA) 08NOV18

CAHOKIA/ST. LOUIS, ILLINOIS
ST LOUIS DOWNTOWN (CPS)



NOTE: RADAR required.
NOTE: BRICKYARD transition, CREEP transition, and
ROSEWOOD transition: DME required.



NOTE: Chart not to scale.

(CONTINUED ON FOLLOWING PAGE)

GATEWAY ONE DEPARTURE
(GATWY1.TWILA) 24025

AL-5316 (FAA)

ST LOUIS DOWNTOWN (CPS)
CAHOKIA/ST. LOUIS, ILLINOIS



DEPARTURE ROUTE DESCRIPTION

TAKEOFF RUNWAY 5: Climb heading 047° to 900 before turning left, then climb and maintain 2500 or assigned altitude. Expect vector to appropriate route, thence. . . .

TAKEOFF RUNWAYS 12L/R: Climb heading 122° to 1000 before turning left, then climb and maintain 2500 or assigned altitude. Expect vector to appropriate route, thence. . . .

TAKEOFF RUNWAY 23: Climb heading 227° to 2000 before turning, then climb and maintain 2500 or assigned altitude. Expect vector to appropriate route, thence. . . .

TAKEOFF RUNWAYS 30L/R: Climb heading 302° to 1600 before turning, then climb and maintain 2500 or assigned altitude. Expect vector to appropriate route, thence. . . .

. . . .from over TOY VORTAC on TOY R-076 or over STL VORTAC on STL R-094 to TWILA INT. Then on (transition), expect clearance to filed altitude 10 minutes after departure.

BIBLE GROVE TRANSITION (GATWY1.BIB): From over TWILA on TOY R-076 to JIGSY, then on BIB R-258 to BIB VORTAC.

BRICKYARD TRANSITION (GATWY1.VHP): From over TWILA on TOY R-076 to JIGSY, then on BIB R-258 to BIB VORTAC, then on BIB R-067 to WORKE, then on BIB R-067 and SHB R-251 to KELLY, then on VHP R-209 to VHP VORTAC.

CREEP TRANSITION (GATWY1.CREEP): From over TWILA on TOY R-076 to JIGSY, then on BIB R-258 to BIB VORTAC, then on BIB R-067 to WORKE, then on BIB R-067 and SHB R-251 to KELLY, then on SHB R-251 to SHB VOR/DME, then on SHB R-075 to CREEP.

JIGSY TRANSITION (GATWY1.JIGSY): From over TWILA on TOY R-076 to JIGSY.

ROSEWOOD TRANSITION (GATWY1.ROD): From over TWILA on TOY R-076 to JIGSY, then on BIB R-258 to BIB VORTAC, then on BIB R-067 to WORKE, then on BIB R-067 and SHB R-251 to KELLY, then on SHB R-251 to SHB VOR/DME, then on SHB R-063 and ROD R-250 to ROD VORTAC.

EC-3, 22 FEB 2024 to 21 MAR 2024

EC-3, 22 FEB 2024 to 21 MAR 2024

LINDBERGH EIGHT DEPARTURE

AL-5316 (FAA)

ST LOUIS DOWNTOWN (CPS)
CAHOKIA/ST. LOUIS, ILLINOIS

ATIS
121.45
CLNC DEL
118.275
CLNC DEL
121.8 (when twr closed)
GND CON
121.8
DOWNTOWN TOWER*
119.925 379.3
ST LOUIS DEP CON
123.7 371.875

**TOP ALTITUDE:
2500**

ST. LOUIS
117.4 STL ...
Chan 121

VICHY
117.7 VIH ...
Chan 124

FARMINGTON
115.7 FAM ...
Chan 104

LITTLE ROCK
113.9 LIT ...
Chan 86

WALNUT RIDGE
114.5 ARG ...
Chan 92

TAKEOFF MINIMUMS

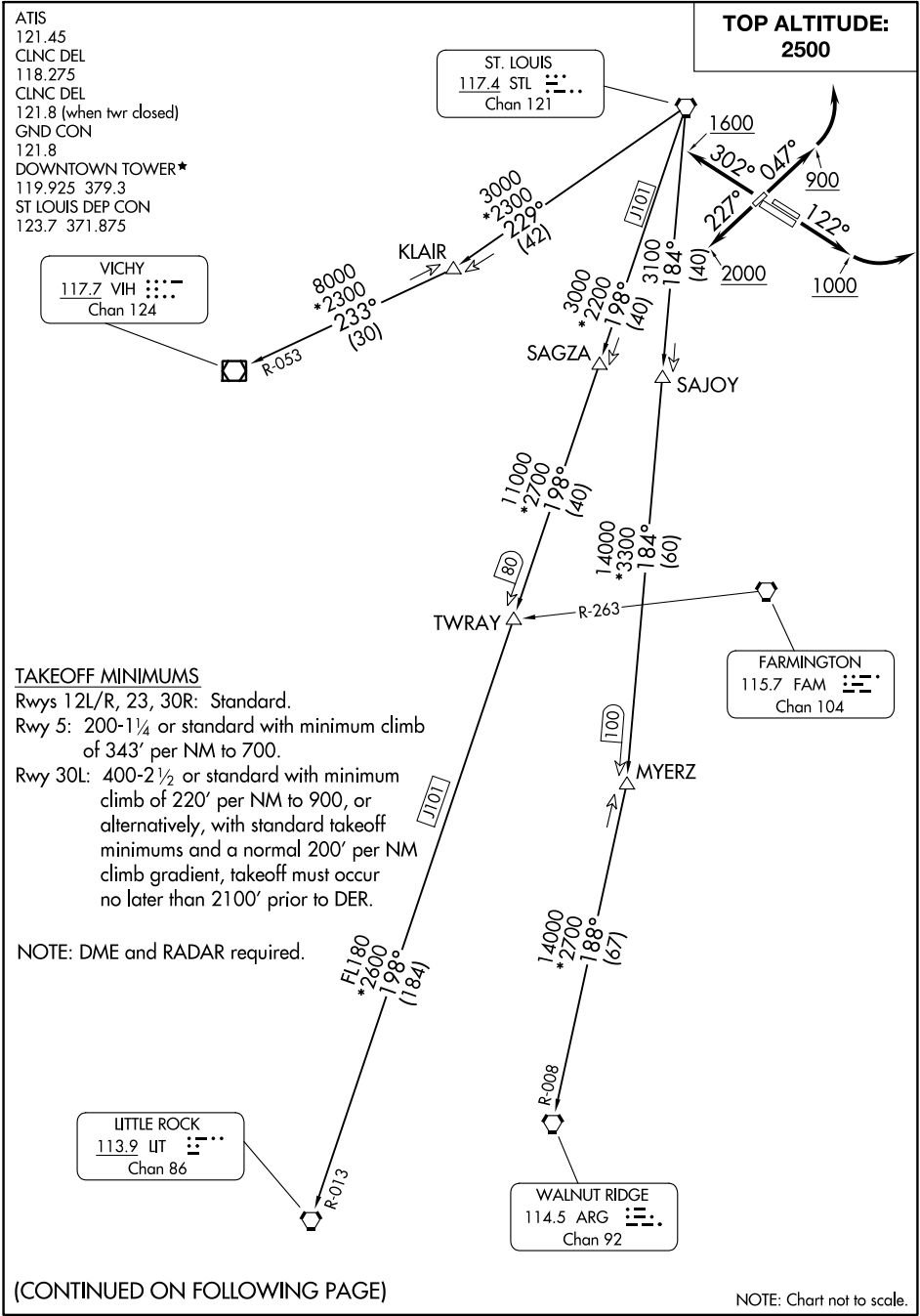
Rwys 12L/R, 23, 30R: Standard.
Rwy 5: 200-1¼ or standard with minimum climb of 343' per NM to 700.
Rwy 30L: 400-2½ or standard with minimum climb of 220' per NM to 900, or alternatively, with standard takeoff minimums and a normal 200' per NM climb gradient, takeoff must occur no later than 2100' prior to DER.

NOTE: DME and RADAR required.

(CONTINUED ON FOLLOWING PAGE)

NOTE: Chart not to scale.

LINDBERGH EIGHT DEPARTURE





DEPARTURE ROUTE DESCRIPTION

TAKEOFF RUNWAY 5: Climb heading 047° to 900 before turning left, then climb and maintain 2500 or assigned altitude. Expect vector to appropriate route, thence

TAKEOFF RUNWAYS 12L/R: Climb heading 122° to 1000 before turning left, then climb and maintain 2500 or assigned altitude. Expect vector to appropriate route, thence

TAKEOFF RUNWAY 23: Climb heading 227° to 2000 before turning, then climb and maintain 2500 or assigned altitude. Expect vector to appropriate route, thence

TAKEOFF RUNWAYS 30L/R: Climb heading 302° to 1600 before turning, then climb and maintain 2500 or assigned altitude. Expect vector to appropriate route, thence

. . . . (transition). Expect filed altitude 10 minutes after departure.

LITTLE ROCK TRANSITION (LINDY8.LIT): From over STL VORTAC on STL R-198 to TWRAY, then on STL R-198 and LIT R-013 to LIT VORTAC.

MYERZ TRANSITION (LINDY8.MYERZ): From over STL VORTAC on STL R-184 to MYERZ.

VICHY TRANSITION (LINDY8.VIH): From over STL VORTAC on STL R-229 to KLAIR, then on VIH R-053 to VIH VOR/DME.

WALNUT RIDGE TRANSITION (LINDY8.ARG): From over STL VORTAC on STL R-184 to MYERZ, then on ARG R-008 to ARG VORTAC.

EC-3, 22 FEB 2024 to 21 MAR 2024

EC-3, 22 FEB 2024 to 21 MAR 2024

ATIS 121.45
CLNC DEL 118.275
121.8 (when tower closed)
GND CON 121.8
DOWNTOWN TOWER★ 119.925 379.3
ST LOUIS DEP CON 123.7 371.875



TOP ALTITUDE:
2500

HALLSVILLE
114.2 HLW
Chan 89



R-095

V4

8000
*2500
281°
(46)

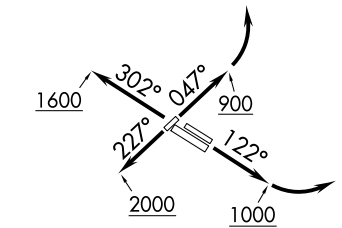


CABIT ←

8000
*2100
281°
(32)

V4

ST. LOUIS
117.4 STL
Chan 121



NOTE: DME and RADAR required.

TAKEOFF MINIMUMS

Rwys 12L/R, 23, 30R: Standard.

Rwy 5: 200-1¼ or standard with minimum climb of 343' per NM to 700.

Rwy 30L: 400-2½ or standard with minimum climb of 220' per NM to 900, or alternatively, with standard takeoff minimums and a normal 200' per NM climb gradient, takeoff must occur no later than 2100' prior to DER.

(CONTINUED ON FOLLOWING PAGE)

NOTE: Chart not to scale.



DEPARTURE ROUTE DESCRIPTION

TAKEOFF RUNWAY 5: Climb on heading 047° to 900 before turning left, then climb and maintain 2500 or assigned altitude. Expect vector to appropriate route, thence

TAKEOFF RUNWAYS 12L/R: Climb on heading 122° to 1000 before turning left, then climb and maintain 2500 or assigned altitude. Expect vector to appropriate route, thence

TAKEOFF RUNWAY 23: Climb on heading 227° to 2000 before turning, then climb and maintain 2500 or assigned altitude. Expect vector to appropriate route, thence

TAKEOFF RUNWAYS 30L/R: Climb on heading 302° to 1600 before turning, then climb and maintain 2500 or assigned altitude. Expect vector to appropriate route, thence

. . . . (transition). Expect filed altitude 10 minutes after departure.

HALLSVILLE TRANSITION (OZARK8.HLV): From over STL VORTAC on STL R-281 to CABIT, then on STL R-281 and HLV R-095 to HLV VORTAC.

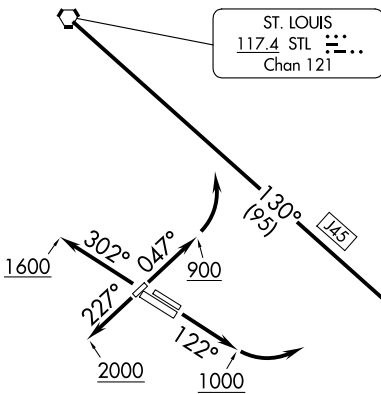
EC-3, 22 FEB 2024 to 21 MAR 2024

EC-3, 22 FEB 2024 to 21 MAR 2024

PLESS FIVE DEPARTURE
(PLESS5, PLESS) 17AUG17

CAHOKIA/ST. LOUIS, ILLINOIS
ST LOUIS DOWNTOWN (CPS)

**TOP ALTITUDE:
ASSIGNED BY ATC**



ST. LOUIS
117.4 STL
Chan 121

TAKEOFF MINIMUMS

Rwys 12L/R, 23, 30R: Standard.

Rwy 5: 200-1¼ or standard with minimum climb of 343' per NM to 700.

Rwy 30L: 400-2½ or standard with minimum climb of 220' per NM to 900, or alternatively, with standard takeoff minimums and a normal 200' per NM climb gradient, takeoff must occur no later than 2100' prior to DER.

ATIS 121.45
CLNC DEL 118.275
121.8 (when tower closed)
GND CON 121.8
DOWNTOWN TOWER* 119.925 379.3
ST LOUIS DEP CON 123.7 371.875

DEPARTURE ROUTE DESCRIPTION

TAKEOFF RUNWAY 5: Climb heading 047° to 900 before turning left, then climb and maintain 2500 or assigned altitude. Expect vector to appropriate route, thence

TAKEOFF RUNWAYS 12L/R: Climb heading 122° to 1000 before turning left, then climb and maintain 2500 or assigned altitude. Expect vector to appropriate route, thence

TAKEOFF RUNWAY 23: Climb heading 227° to 2000 before turning, then climb and maintain 2500 or assigned altitude. Expect vector to appropriate route, thence

TAKEOFF RUNWAYS 30L/R: Climb heading 302° to 1600 before turning, then climb and maintain 2500 or assigned altitude. Expect vector to appropriate route, thence from over STL VORTAC on STL R-130 to PLESS, then on (transition) or (assigned route). Expect filed altitude 10 minutes after departure.

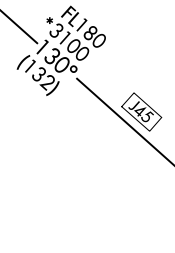
DENNI TRANSITION (PLESS5.DENNI): From over PLESS on STL R-130 to DENNI.

NASHVILLE TRANSITION (PLESS5.BNA): From over PLESS on STL R-130 to DENNI, then on STL R-130 and BNA R-315 to BNA VORTAC.



POCKET CITY
113.3 PXV
Chan 80

NOTE: DME and RADAR required.



NASHVILLE
114.1 BNA
Chan 88

NOTE: Chart not to scale.

(PLESS5, PLESS) 24025
PLESS FIVE DEPARTURE

AL-5316 (FAA)

ST LOUIS DOWNTOWN (CPS)
CAHOKIA/ST. LOUIS, ILLINOIS