

WAAS CH 93642 W03A	APP CRS 044°	Rwy Idg 6301 TDZE 4558 Apt Elev 4590
--	------------------------	---

RNAV (GPS) RWY 3

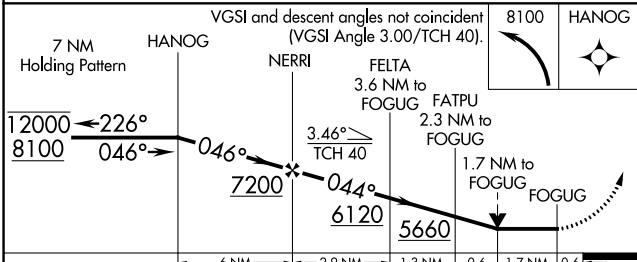
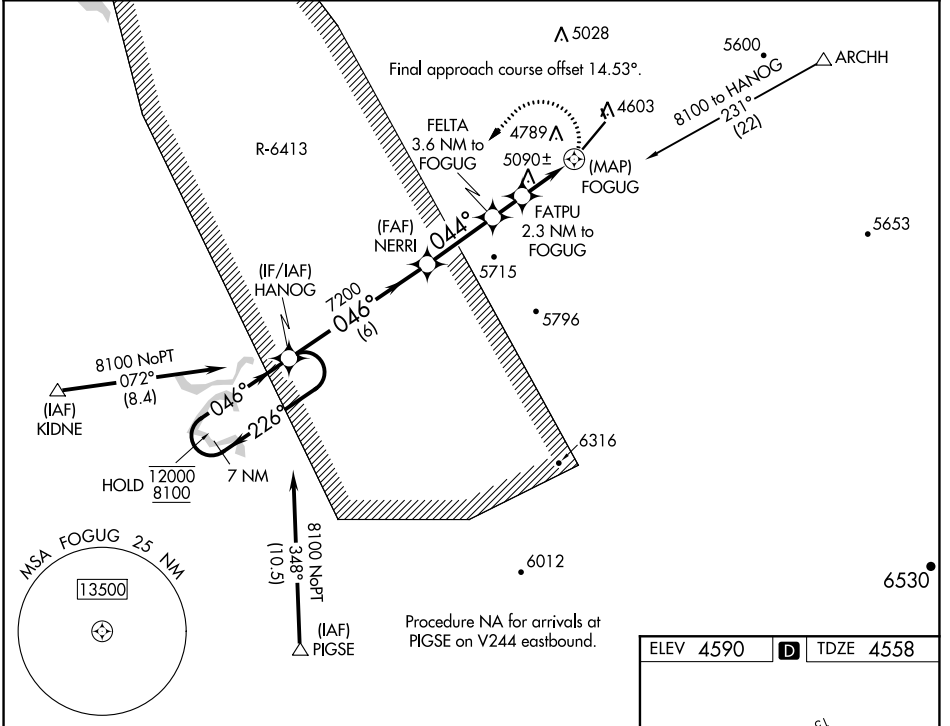
CANYONLANDS RGNL (CNY)

RNP APCH.

NA Circling NA to Rwys 15 and 33. Rwy 3 helicopter visibility reduction below 3/4 SM NA. Procedure NA when R-6413 in operation.

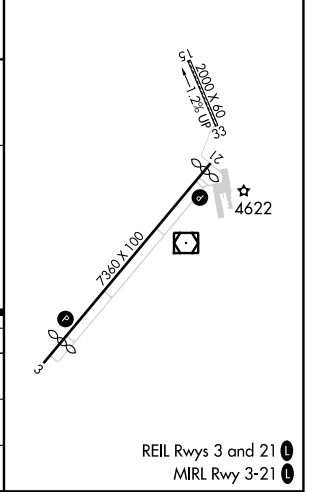
MISSED APPROACH: Climbing left turn to 8100 direct HANOG and hold, continue climb-in-hold to 8100.

ASOS 118.525	DENVER CENTER 134.5 327.8	UNICOM 122.8 (CTAF)
------------------------	-------------------------------------	-------------------------------



CATEGORY	A	B	C	D
LP MDA	5340-1 782 (800-1)	5340-1½ 782 (800-1¼)	5340-2½ 782 (800-2½)	782 (800-2½)
LNAV MDA	5340-1 782 (800-1)	5340-1½ 782 (800-1¼)	5340-2½ 782 (800-2½)	782 (800-2½)
C CIRCLING	5660-1 1070 (1100-1)	5660-1½ 1070 (1100-1¼)	5720-3 1130 (1200-3)	6220-3 1630 (1700-3)

ELEV 4590	D TDZE 4558
-----------	--------------------



REIL Rwys 3 and 21
MIRL Rwy 3-21

SW-4, 17 JUN 2021 to 15 JUL 2021

SW-4, 17 JUN 2021 to 15 JUL 2021

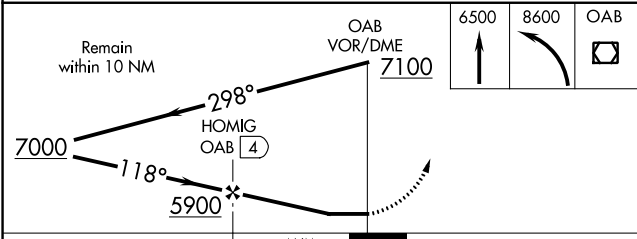
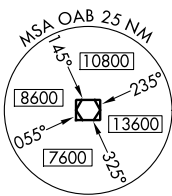
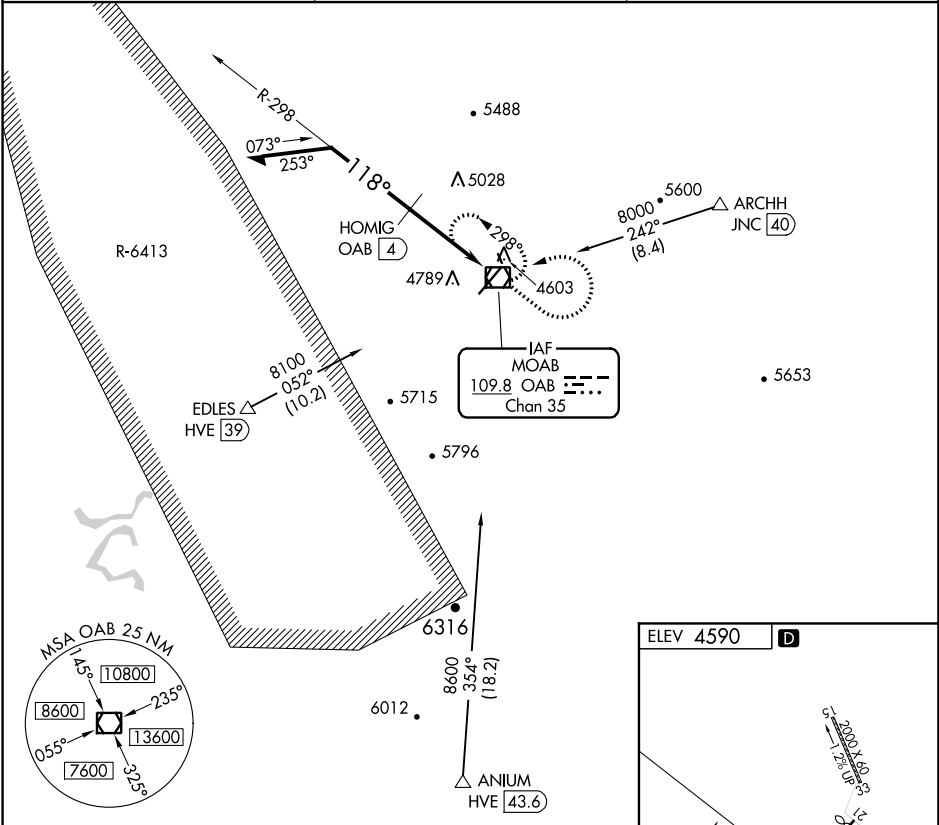
VOR/DME OAB 109.8 Chan 35	APP CRS 118°	Rwy Idg TDZE Apt Elev N/A N/A 4590
---	------------------------	---

VOR-A

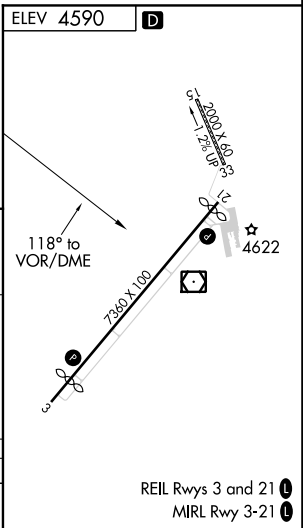
CANYONLANDS RGNL (CNY)

DME required.	MISSED APPROACH: Climb to 6500 then climbing left turn to 8600 direct OAB VOR/DME and hold, continue climb-in-hold to 8600.
<p>⚠ NA</p> <p>Circling NA to Rwy 15 and 33. Procedure NA when R-6413 in operation.</p>	

ASOS 118.525	DENVER CENTER 134.5 327.8	UNICOM 122.8 (CTAF)
------------------------	-------------------------------------	-------------------------------



CATEGORY	A	B	C	D
C CIRCLING	5160-1 570 (600-1)	5200-1 610 (700-1)	5720-3 1130 (1200-3)	NA



SW-4, 17 JUN 2021 to 15 JUL 2021

SW-4, 17 JUN 2021 to 15 JUL 2021