

TIKEE FOUR ARRIVAL (RNAV)  
(TIKEE.TIKEE4) 20APR23

POTOMAC APP CON  
120.45 306.925  
DCA D-ATIS  
132.65  
ADW D-ATIS  
133.675 251.05  
\*DAA ATIS  
128.175

RNAV 1 - DME/DME/IRU or GPS.  
RADAR required.

ARRIVAL ROUTE DESCRIPTION

BBONE TRANSITION (BBONE.TIKEE4):  
KESSEL TRANSITION (ESL.TIKEE4):  
SEALZ TRANSITION (SEALZ.TIKEE4):

All aircraft types landing HEF/NYG/RMN/HWY/CJR/EZF:  
From TIKEE on track 090° to JETIS, then on heading 090° or as assigned by ATC. Expect RADAR vectors to final approach course.

Props and Turboprop aircraft landing DAA/W00/VKX/ADW/  
2W5/DCA: From TIKEE on track 122° to GILFF, then on heading 090° or as assigned by ATC. Expect RADAR vectors to final approach course.

NOTE: Procedure available to all type aircraft landing the following airports: CJR, HWY, HEF, RMN, EZF, NYG.

NOTE: Props or Turboprop aircraft only landing the following airports: DAA, 2W5, VKX, W00, DCA, ADW.

KESSEL  
ESL  
FL190



7000  
\*6300  
178°  
(37)

BBONE

7000  
\*6300  
107°  
(12)

LURAY 7000  
\*6300  
(7)

6300  
087°  
(9)

(3)  
5200  
090°

JETIS

090°

7000  
\*6300  
086°  
(42)

SEALZ

LLBEE  
9000

5200  
122°  
(41)

TIKEE

090°

WARRENTON/  
FAUQUIER

CULPEPER  
RGNL

STAFFORD  
RGNL

3000  
\*1500

090°  
(3)

GILFF

HIGPO

090°

SHANNON

MANASSAS RGNL/  
HARRY P DAVIS FLD

DAVISON AAF

MARYLAND

QUANTICO MCAF  
(TURNER FLD)

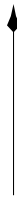
RONALD REAGAN  
WASHINGTON  
NTL

JOINT BASE  
ANDREWS

POTOMAC  
AIRFIELD

FREEWAY

N



NOTE: Chart not to scale

WASHINGTON, DC

WASHINGTON, DC

TIKEE FOUR ARRIVAL (RNAV)  
(TIKEE.TIKEE4) 23110

AL-443 (FAA)

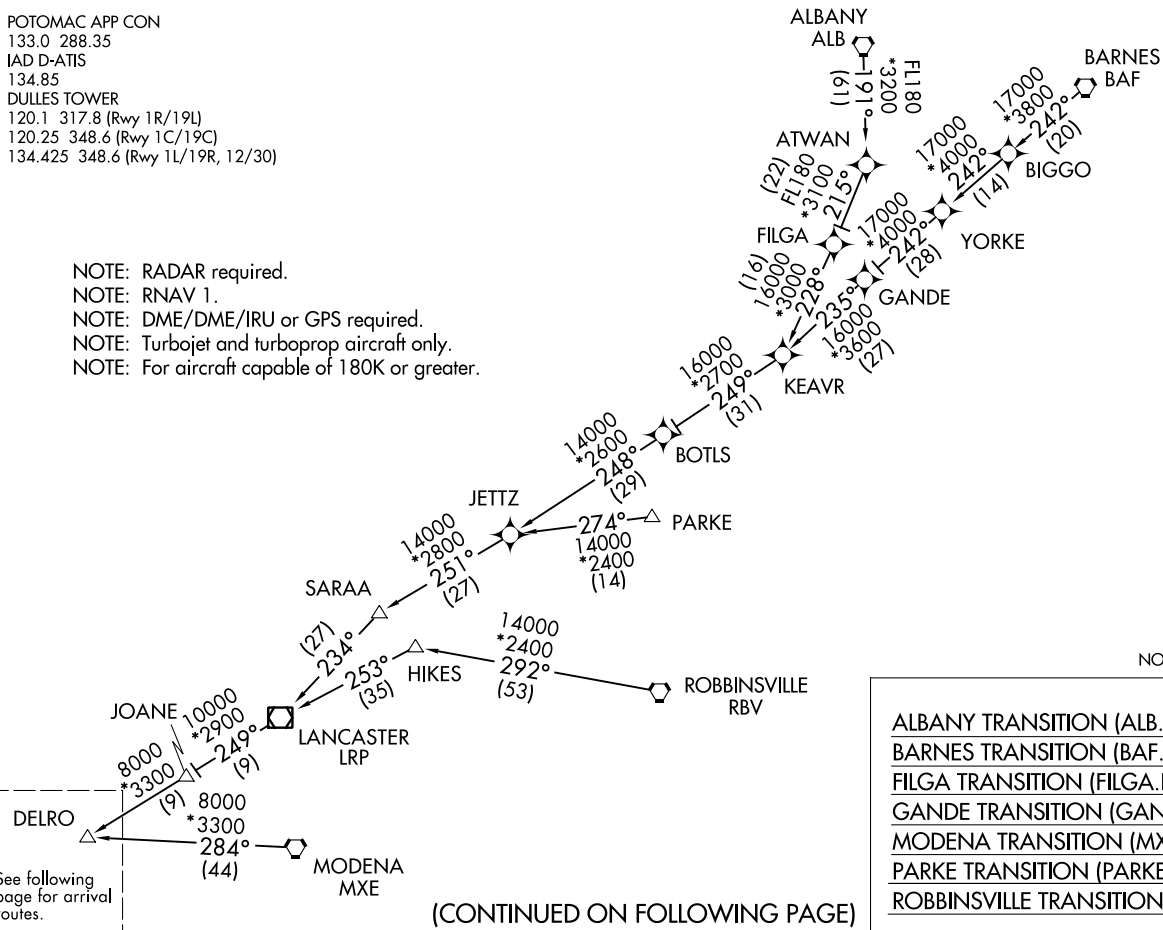
HYPER EIGHT ARRIVAL (RNAV) Transition Routes  
(DELRO.HYPER8) 31DEC20

POTOMAC APP CON  
133.0 288.35  
IAD D-ATIS  
134.85  
DULLES TOWER  
120.1 317.8 (Rwy 1R/19L)  
120.25 348.6 (Rwy 1C/19C)  
134.425 348.6 (Rwy 1L/19R, 12/30)

NOTE: RADAR required.  
NOTE: RNAV 1.  
NOTE: DME/DME/IRU or GPS required.  
NOTE: Turbojet and turboprop aircraft only.  
NOTE: For aircraft capable of 180K or greater.



NOTE: Chart not to scale.



(CONTINUED ON FOLLOWING PAGE)

HYPER EIGHT ARRIVAL (RNAV) Transition Routes  
AL-5100 (FAA)  
24025

WASHINGTON, DC

# HYPER EIGHT ARRIVAL (RNAV) Arrival Routes

WASHINGTON, DC

POTOMAC APP CON

133.0 288.35

IAD D-ATIS

134.85

DULLES TOWER

120.1 317.8 (Rwy 1R/19L)

120.25 348.6 (Rwy 1C/19C)

134.425 348.6 (Rwy 1L/19R, 12/30)

NOTE: RADAR required.

NOTE: RNAV 1.

NOTE: DME/DME/IRU or GPS required.

NOTE: Turbojet and turboprop aircraft only.

NOTE: For aircraft capable of 180K or greater.



NOTE: Chart not to scale.

NE-3, 22 FEB 2024 to 21 MAR 2024

NE-3, 22 FEB 2024 to 21 MAR 2024

# HYPER EIGHT ARRIVAL (RNAV) Arrival Routes

WASHINGTON, DC

ARRIVAL ROUTE DESCRIPTION

IAD: From DELRO on track 249° to cross LIRCH at 14000, then on track 249° to BINNS, then on track 249° to cross HYPER at 10000 and at 250K.

Landing IAD Rwy 1C/R: From HYPER on track 211° to cross SIGBE at 7000, then on track 189° to cross MOWAT at 5000, then on track 189° to cross HUSEL at 4000, then on track 190° to YACKK, then on track 191° to TICON, then on track 191°. Expect RADAR vectors to final approach course.

Landing IAD Rwy 1L: From HYPER on track 220° to cross CRAIN at 6000, then on track 214° to cross KUKSE at 5000, then on track 191° to ELISN, then on track 191° to MIKEJ, then on track 191°. Expect RADAR vectors to final approach course.

Landing IAD Rwy 19C: From HYPER on track 219° to cross COVUR at 7000, then on track 191° to DIMKE, then on track 191° to cross HOOSR at or above 5000. Expect ILS or LOC Rwy 19C approach.

Landing IAD Rwy 19L: From HYPER on track 216° to cross OOGLE at or below 5000, then on track 217° to cross LITEY at 4000, then on track 191° to cross YYANG at 4000, then on track 191° to cross DADEY at or above 3000. Expect ILS or LOC Rwy 19L approach.

Landing IAD Rwy 19R: From HYPER on track 220° to cross CRAIN at 6000, then on track 220° to cross REXOE at 6000, then on track 191° to cross BEEZY at or above 4000. Expect ILS or LOC Rwy 19R approach.

Landing NYG/CJR/EZF/RMN/HWY/HEF: From DELRO on track 249° to cross LIRCH at 14000, then on track 249° to BINNS, then on track 249° to cross HYPER at 10000 and at 250K, then on track 211° to cross SIGBE at 7000, then on track 189° to cross MOWAT at 5000, then on track 189° to cross HUSEL at 4000, then on track 190° to YACKK, then on track 191° to TICON, then on track 191°. Expect RADAR vectors to final approach course.

Landing MRB/JYO/FRR/OKV: From DELRO on track 249° to cross LIRCH at 14000, then on track 249° to BINNS, then on track 249° to cross HYPER at 10000 and at 250K, then on track 233° to PHATT. Then on heading 230° or as assigned by ATC. Expect RADAR vectors to final approach course.

NE-3, 22 FEB 2024 to 21 MAR 2024

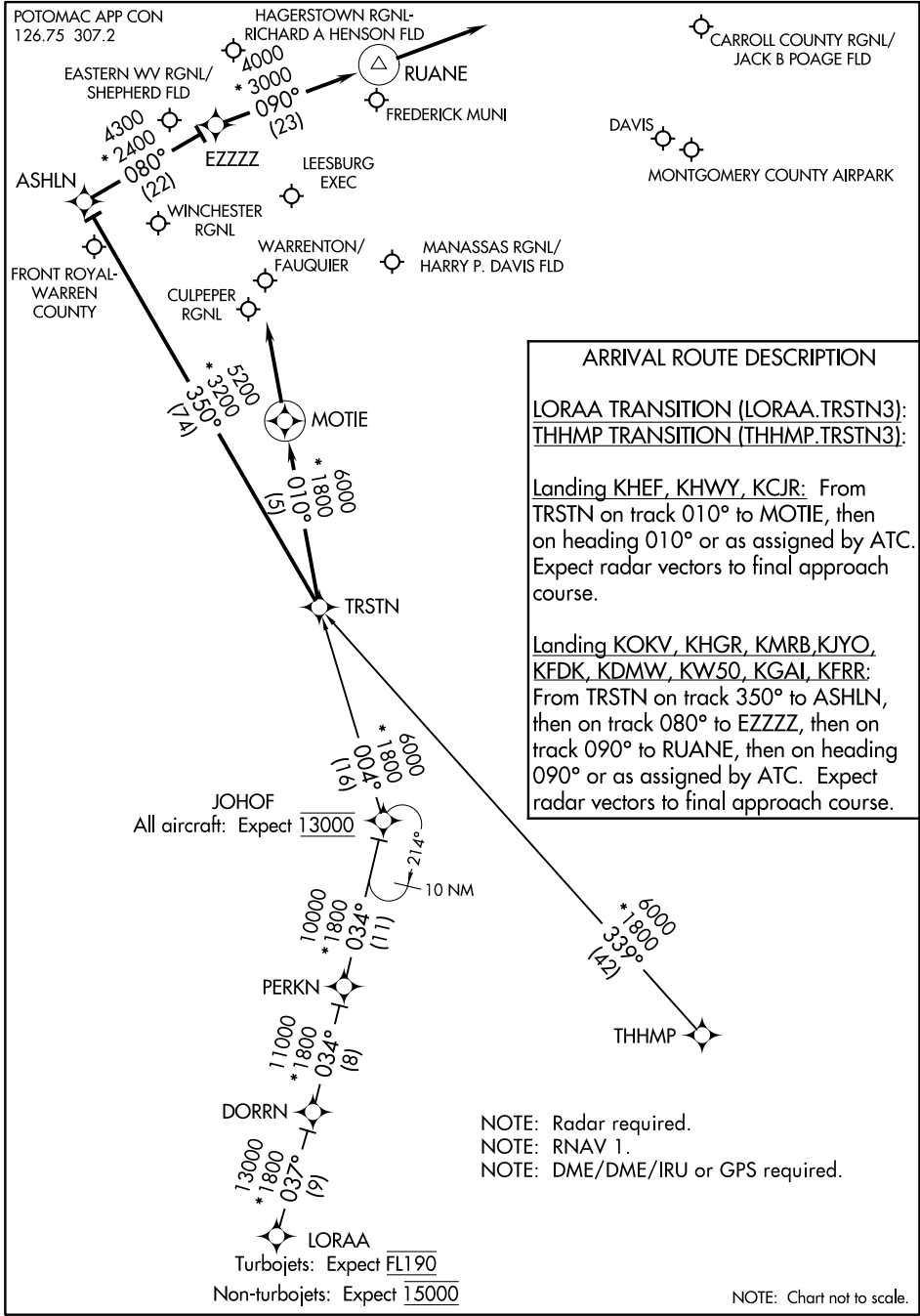
NE-3, 22 FEB 2024 to 21 MAR 2024

(TRSTN.TRSTN3) 22027

# TRSTN THREE ARRIVAL (RNAV)

AL-5326

WASHINGTON, D.C.



NE-3, 22 FEB 2024 to 21 MAR 2024

NE-3, 22 FEB 2024 to 21 MAR 2024

# TRSTN THREE ARRIVAL (RNAV)

(TRSTN.TRSTN3) 04FEB16

WASHINGTON, D.C.

NOTE: Chart not to scale.