

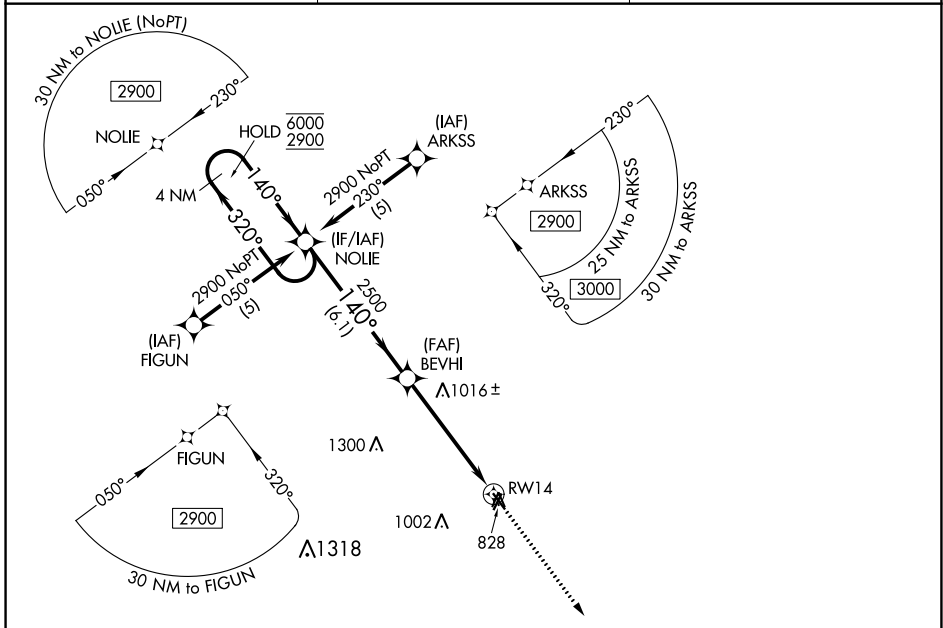
APP CRS 140°	Rwy Idg 3899
	TDZE 783
	Apt Elev 783

RNAV (GPS) RWY 14

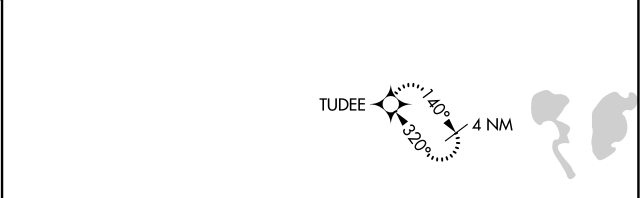
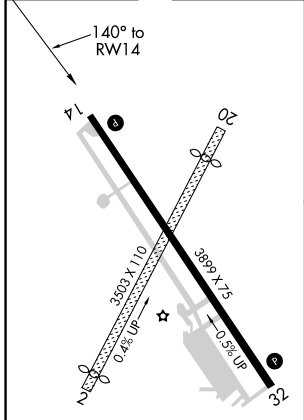
CHILLICOTHE MUNI (CHT)

RNP APCH.	MISSED APPROACH: Climb to 2900 direct TUDEE and hold.
<p>▼ Rwy 14 helicopter visibility reduction below 1 SM NA.</p> <p>▲ NA Procedure NA at night. When local altimeter setting not received, use Kansas City Intl altimeter setting and increase all MDA 200 feet.</p>	

AWOS-3 118.175	KANSAS CITY CENTER 125.25 235.975	UNICOM 122.8 (CTAF) ①
--------------------------	---	---------------------------------



ELEV 783	TDZE 783
----------	----------



4 NM Holding Pattern	NOLIE	BEVHI	2900	TUDEE
6000 2900	← 320° 140° →	140°	3.04° TCH 44	
		2500		RWY 14
		6.1 NM	5.2 NM	

CATEGORY	A	B	C	D
LNAV MDA	1280-1	497 (500-1)		NA

MIRL Rwy 14-32 ①
REIL Rwy 14 and 32 ①
CHILLICOTHE, MISSOURI
Orig-B 18JUL19

NC-3, 20 MAY 2021 to 17 JUN 2021

NC-3, 20 MAY 2021 to 17 JUN 2021

WAAS CH 70413 W32A	APP CRS 320°	Rwy Idg TDZE 782 Apt Elev 783	3899
--	------------------------	---	-------------

RNAV (GPS) RWY 32

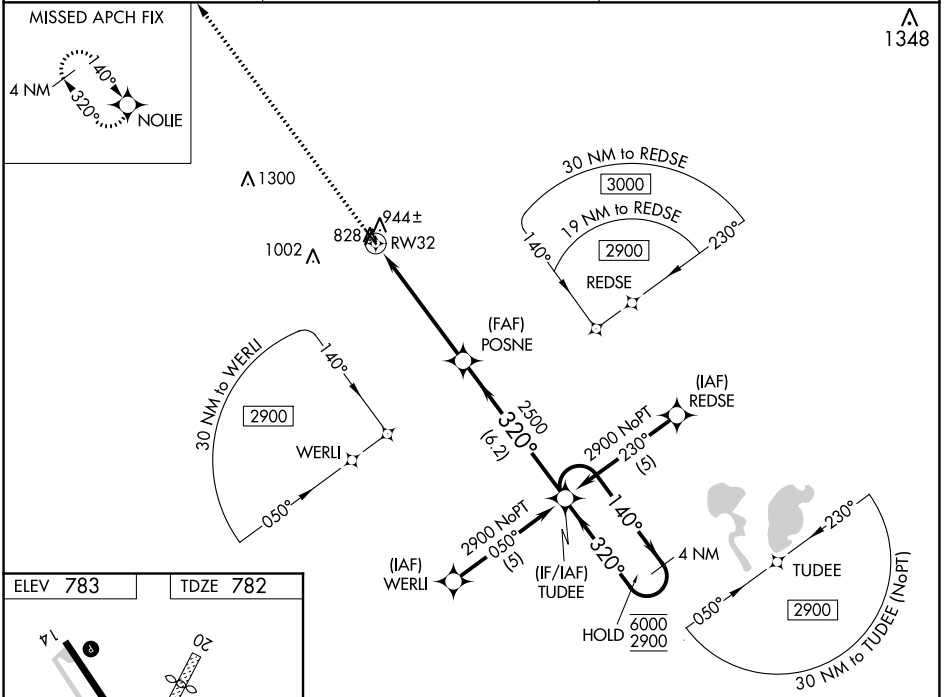
CHILLICOTHE MUNI (CHT)

RNP APCH.

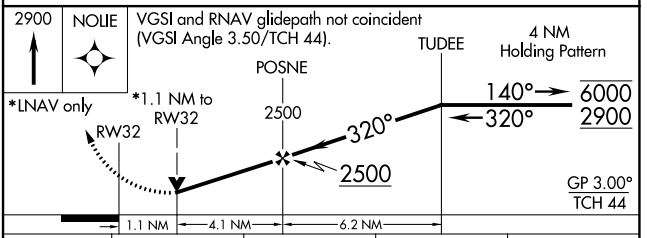
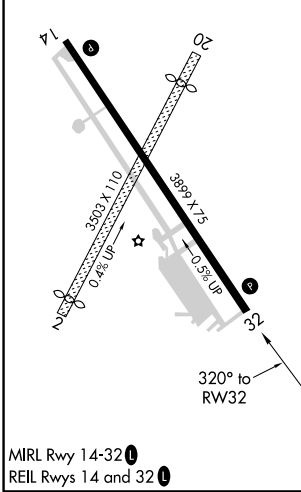
Baro-VNAV and VDP NA when using Kansas City Intl altimeter setting.
 Rwy 32 helicopter visibility reduction below 3/4 SM NA. For uncompensated Baro-VNAV systems, LNAV/VNAV NA below -16°C or above 54°C.
 When local altimeter setting not received, use Kansas City Intl altimeter setting and increase LPV DA to 1329 and LNAV/VNAV DA to 1335 and all MDA 200 feet, increase all LPV visibilities 3/8 SM and LNAV/VNAV visibilities 1/8 SM.

MISSED APPROACH: Climb to 2900 direct NOLIE and hold.

AWOS-3 118.175	KANSAS CITY CENTER 125.25 235.975	UNICOM 122.8 (CTAF) 1
--------------------------	---	---------------------------------



ELEV 783	TDZE 782
----------	----------



CATEGORY		A	B	C	D
LPV	DA	1148-1¼	366 (400-1¼)		NA
LNAV/VNAV	DA	1154-1½	372 (400-1½)		NA
LNAV	MDA	1200-1	418 (500-1)		NA

NC-3, 20 MAY 2021 to 17 JUN 2021

NC-3, 20 MAY 2021 to 17 JUN 2021