

(LGRHD3.LGRHD) 23110

AL-76 (FAA)

CHARLESTON AFB/INTL (CHS)  
CHARLESTON, SOUTH CAROLINA

# LGRHD THREE DEPARTURE (RNAV)

D-ATIS  
124.75  
CLNC DEL  
127.325 291.65  
CPDLC  
GND CON  
121.9 348.6  
CHARLESTON TOWER  
126.0 239.0  
CHARLESTON DEP CON  
120.7 306.925

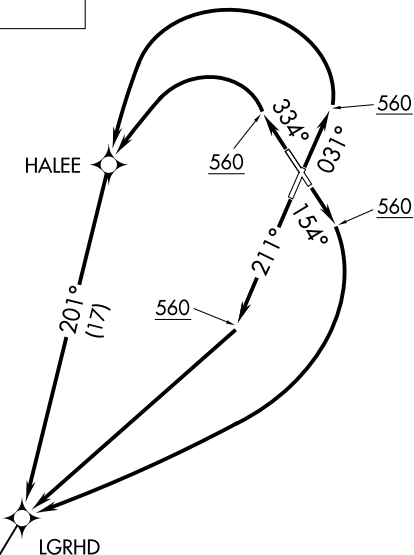
**TOP ALTITUDE:  
4000**

### TAKEOFF MINIMUMS

Rwys 15, 33: Standard.

Rwys 3, 21: Standard with minimum  
climb of 500' per NM to 560.

- NOTE: If unable to accept climb rate, advise ATC on initial contact.
- NOTE: DME/DME/IRU or GPS required.
- NOTE: RNAV 1.
- NOTE: RADAR required for non-GPS equipped aircraft.
- NOTE: For non-GPS equipped aircraft: SAV and VAN DMEs must be operational.



NOTE: Chart not to scale.

### DEPARTURE ROUTE DESCRIPTION

- TAKEOFF RUNWAY 3:** Climb on heading 031° to 560, then left turn direct HALEE, then on depicted route to LGRHD, thence. . . .
- TAKEOFF RUNWAY 15:** Climb on heading 154° to 560, then right turn direct LGRHD, thence. . . .
- TAKEOFF RUNWAY 21:** Climb on heading 211° to 560, then direct LGRHD, thence. . . .
- TAKEOFF RUNWAY 33:** Climb on heading 334° to 560, then left turn direct HALEE, then on depicted route to LGRHD, thence. . . .

. . . . on assigned transition/route, maintain 4000.  
Expect clearance to filed altitude/flight level within ten (10) minutes after departure.

GIPPL TRANSITION (LGRHD3.GIPPL):

# LGRHD THREE DEPARTURE (RNAV)

(LGRHD3.LGRHD) 05NOV20

CHARLESTON, SOUTH CAROLINA  
CHARLESTON AFB/INTL (CHS)

SE-2, 22 FEB 2024 to 21 MAR 2024

SE-2, 22 FEB 2024 to 21 MAR 2024

(MLTRE3.MLTRE) 23166

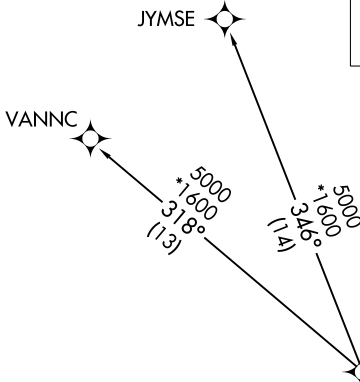
AL-76 (FAA)

CHARLESTON AFB/INTL (CHS)  
CHARLESTON, SOUTH CAROLINA

# MLTRE THREE DEPARTURE (RNAV)

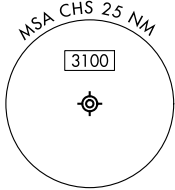
**TOP ALTITUDE:  
4000**

D-ATIS  
124.75  
CLNC DEL  
127.325 291.65  
CPDLC  
GND CON  
121.9 348.6  
CHARLESTON TOWER  
126.0 239.0  
CHARLESTON DEP CON  
121.275 379.925



NOTE: For non-GPS equipped aircraft, CHS and VAN DMEs must be operational for takeoff Rwy 21.

TAKEOFF MINIMUMS:  
Rwys 3, 15, 21, 33: Standard.



RNAV 1 - DME/DME/IRU or GPS.  
RADAR required for non-GPS equipped aircraft.

## DEPARTURE ROUTE DESCRIPTION

TAKEOFF RUNWAY 3: Climb on heading 031° to 546, then left turn direct to cross MLTRE at or above 4000, thence. . .

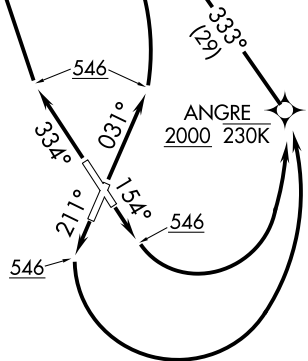
TAKEOFF RUNWAY 15: Climb on heading 154° to 546, then left turn direct to cross ANGRE at or above 2000 at or below 230K, then on track 333° to cross MLTRE at or above 4000, thence. . .

TAKEOFF RUNWAY 21: Climb on heading 211° to 546, then left turn direct to cross ANGRE at or above 2000 at or below 230K, then on track 333° to cross MLTRE at or above 4000, thence. . .

TAKEOFF RUNWAY 33: Climb on heading 334° to 546, then direct to cross MLTRE at or above 4000, thence. . .

. . . on assigned transition. Maintain 4000. Expect clearance to filed altitude 10 minutes after departure.

JYMSE TRANSITION (MLTRE3.JYMSE):  
VANNC TRANSITION (MLTRE3.VANNC):



NOTE: Chart not to scale.

# MLTRE THREE DEPARTURE (RNAV)

(MLTRE3.MLTRE) 20APR23

CHARLESTON, SOUTH CAROLINA  
CHARLESTON AFB/INTL (CHS)

SE-2, 22 FEB 2024 to 21 MAR 2024

SE-2, 22 FEB 2024 to 21 MAR 2024

**TOP ALTITUDE:  
4000**

D-ATIS  
124.75  
CLNIC DEL  
127.325 291.65  
CPDLC  
GND CON  
121.9 348.6  
CHARLESTON TOWER  
126.0 239.0  
CHARLESTON DEP CON  
121.275 379.925

NOTE: If unable to accept climb rate,  
advise ATC on initial contact.  
NOTE: RNAV 1.  
NOTE: DME/DME/IRU or GPS required.  
NOTE: RADAR required for non-GPS  
equipped aircraft.

NOTE: Chart not to scale.

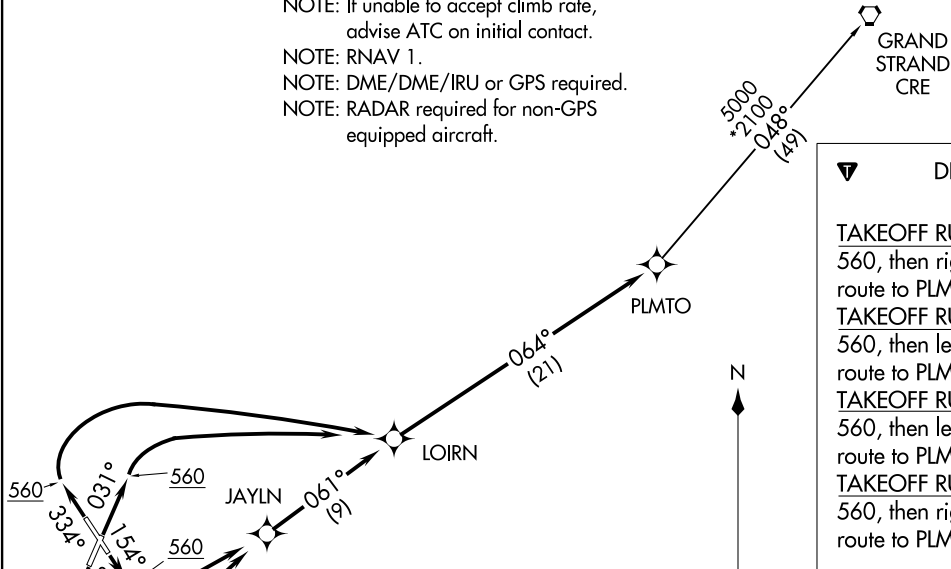
**DEPARTURE ROUTE DESCRIPTION**

**TAKEOFF RUNWAY 3:** Climb on heading 031° to 560, then right turn direct LOIRN, then on depicted route to PLMTO, thence. . . .  
**TAKEOFF RUNWAY 15:** Climb on heading 154° to 560, then left turn direct JAYLN, then on depicted route to PLMTO, thence. . . .  
**TAKEOFF RUNWAY 21:** Climb on heading 211° to 560, then left turn direct JAYLN, then on depicted route to PLMTO, thence. . . .  
**TAKEOFF RUNWAY 33:** Climb on heading 334° to 560, then right turn direct LOIRN, then on depicted route to PLMTO, thence. . . .

. . . . on assigned transition/route. Maintain 4000. Expect clearance to filed altitude within ten minutes after departure.

**GRAND STRAND TRANSITION (PLMTO3.CRE):**

**TAKEOFF MINIMUMS**  
Rwys 15, 33: Standard.  
Rwys 3, 21: Standard with minimum climb of 500' per NM to 560.



**PLMTO THREE DEPARTURE (RNAV)**  
(PLMTO3.PLMTO) 05NOV20

CHARLESTON, SOUTH CAROLINA  
CHARLESTON AFB/INTL (CHS)

(PLMTO3.PLMTO) 23166  
**PLMTO THREE DEPARTURE (RNAV)**

AL-76 (FAA)

CHARLESTON AFB/INTL (CHS)  
CHARLESTON, SOUTH CAROLINA

**TOP ALTITUDE:**  
**4000**

D-ATIS  
124.75  
CLNC DEL  
127.325 291.65  
CPDLC  
GND CON  
121.9 348.6  
CHARLESTON TOWER  
126.0 239.0  
CHARLESTON DEP CON  
120.7 306.925

**TAKEOFF MINIMUMS:**  
Rwys 15, 33: Standard.  
Rwys 3, 21: Standard with minimum climb of 500'  
per NM to 560.



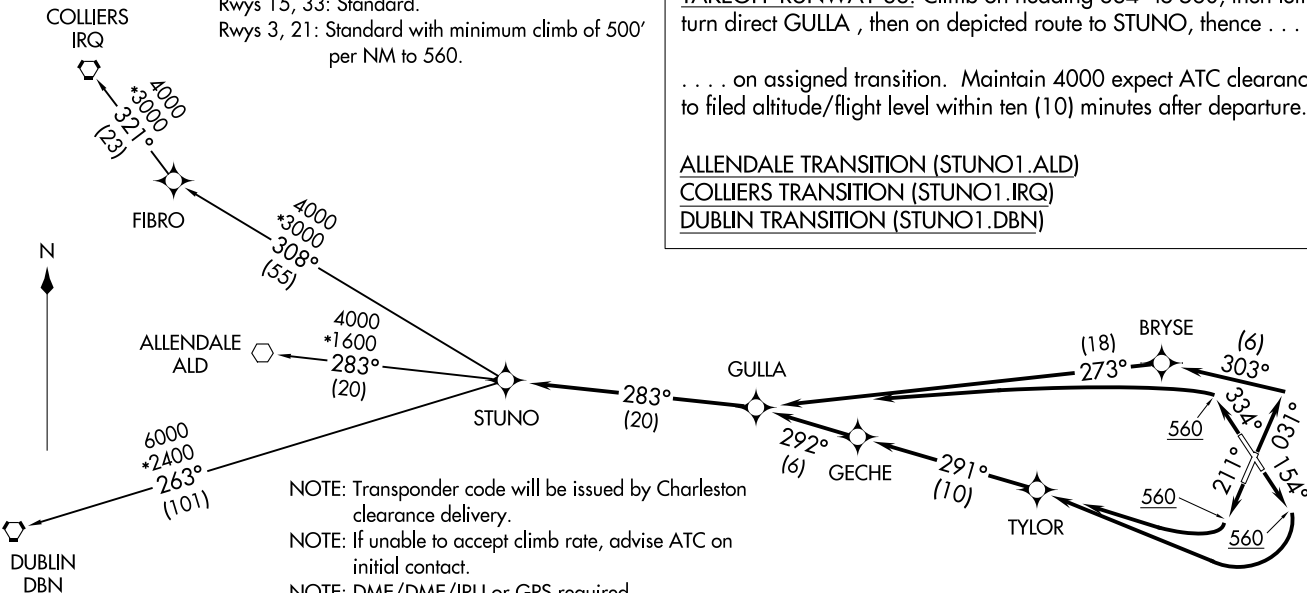
**DEPARTURE ROUTE DESCRIPTION**

TAKEOFF RUNWAY 3: Climb on heading 031° to intercept course 303° to BRYSE, then on depicted route to STUNO, thence . . . .  
TAKEOFF RUNWAY 15: Climb on heading 154° to 560, then right turn direct TYLOR, then on depicted route to STUNO, thence . . . .  
TAKEOFF RUNWAY 21: Climb on heading 211° to 560, then right turn direct TYLOR, then on depicted route to STUNO, thence . . . .  
TAKEOFF RUNWAY 33: Climb on heading 334° to 560, then left turn direct GULLA , then on depicted route to STUNO, thence . . . .  
  
. . . . on assigned transition. Maintain 4000 expect ATC clearance to filed altitude/flight level within ten (10) minutes after departure.

ALLENDALE TRANSITION (STUNO1.ALD)  
COLLIERS TRANSITION (STUNO1.IRQ)  
DUBLIN TRANSITION (STUNO1.DBN)

- NOTE: Transponder code will be issued by Charleston clearance delivery.
- NOTE: If unable to accept climb rate, advise ATC on initial contact.
- NOTE: DME/DME/IRU or GPS required.
- NOTE: RNAV 1.
- NOTE: RADAR required for non-GPS equipped aircraft.

NOTE: Chart not to scale.



STUNO ONE DEPARTURE (RNAV)  
(STUNO1.STUNO) 0700CT21

CHARLESTON, SOUTH CAROLINA  
CHARLESTON AFB/INTL (CHS)

(STUNO1.STUNO) 23110  
STUNO ONE DEPARTURE (RNAV)

CHARLESTON AFB/INTL (CHS)  
CHARLESTON, SOUTH CAROLINA

AL-76 (FAA)

(SWPFX3.SWPFX) 23166

AL-76 (FAA)

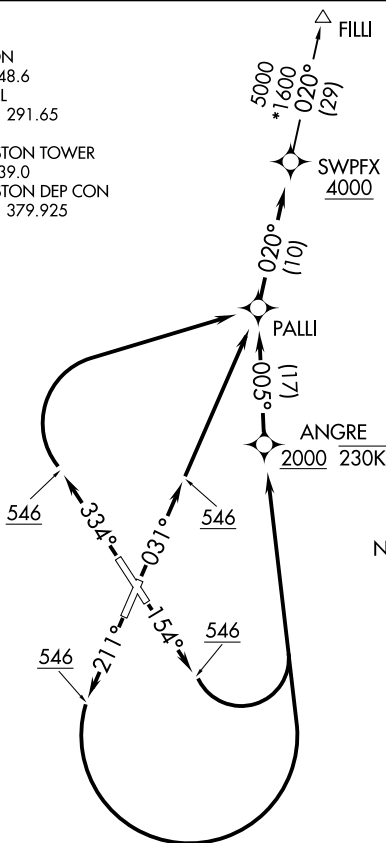
CHARLESTON AFB/INTL (CHS)  
CHARLESTON, SOUTH CAROLINA

# SWPFX THREE DEPARTURE (RNAV)

RNAV 1 - DME/DME/IRU or GPS.  
RADAR required for non-GPS equipped aircraft.

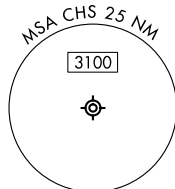
**TOP ALTITUDE:  
4000**

D-ATIS  
124.75  
GND CON  
121.9 348.6  
CLNC DEL  
127.325 291.65  
CPDLC  
CHARLESTON TOWER  
126.0 239.0  
CHARLESTON DEP CON  
121.275 379.925



TAKEOFF MINIMUMS  
Rwys 3, 15, 21, 33: Standard.

NOTE: For non-GPS equipped aircraft, CHS and VAN DMEs must be operational for takeoff Rwy 21.



NOTE: Chart not to scale.

## DEPARTURE ROUTE DESCRIPTION

TAKEOFF RUNWAY 3: Climb on heading 031° to 546, then direct PALLI, then on track 020° to cross SWPFX at or above 4000, thence . . . .

TAKEOFF RUNWAY 15: Climb on heading 154° to 546, then left turn direct to cross ANGRE at or above 2000 at or below 230K, then on depicted route to cross SWPFX at or above 4000, thence . . . .

TAKEOFF RUNWAY 21: Climb on heading 211° to 546, then left turn direct to cross ANGRE at or above 2000 at or below 230K, then on depicted route to cross SWPFX at or above 4000, thence . . . .

TAKEOFF RUNWAY 33: Climb on heading 334° to 546, then right turn direct PALLI, then on track 020° to cross SWPFX at or above 4000, thence . . . .

. . . . on assigned transition. Maintain 4000. Expect clearance to filed altitude 10 minutes after departure.

FILLI TRANSITION (SWPFX3.FILLI)

# SWPFX THREE DEPARTURE (RNAV)

(SWPFX3.SWPFX) 20APR23

CHARLESTON, SOUTH CAROLINA  
CHARLESTON AFB/INTL (CHS)

SE-2, 22 FEB 2024 to 21 MAR 2024

SE-2, 22 FEB 2024 to 21 MAR 2024