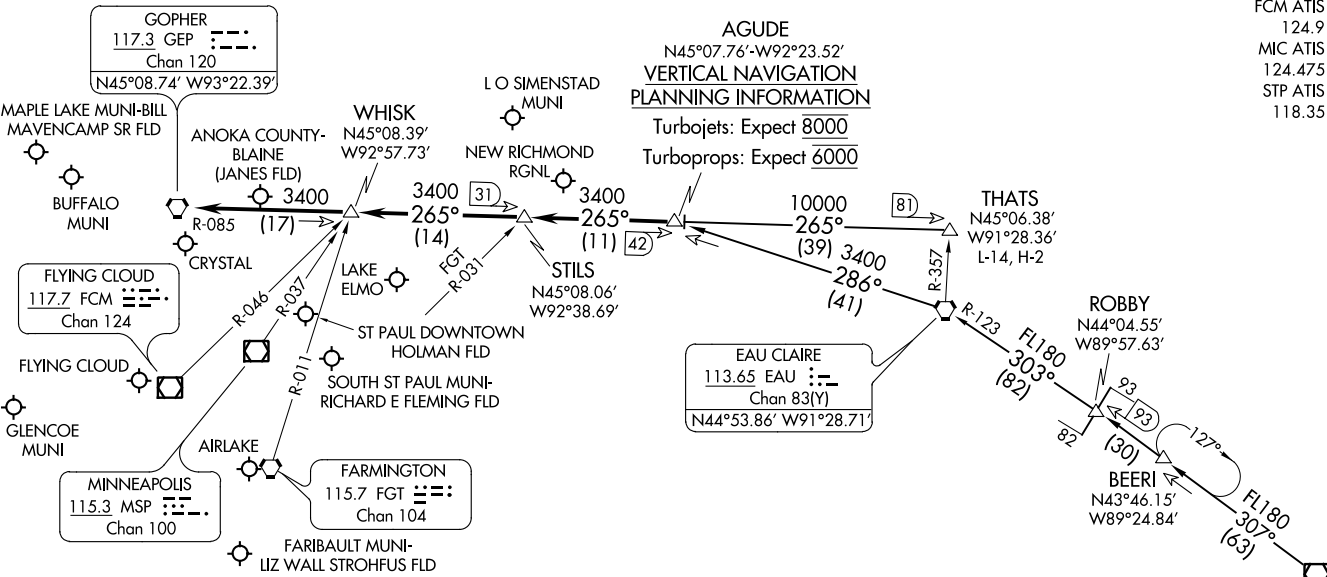


NOTE: Chart not to scale.

NOTE: DME and RADAR required.

MINNEAPOLIS APP CON
 121.2 335.5
 ANE ATIS
 120.625
 FCM ATIS
 124.9
 MIC ATIS
 124.475
 STP ATIS
 118.35

AGUDE
 N45°07.76'-W92°23.52'
VERTICAL NAVIGATION
PLANNING INFORMATION
 Turbojets: Expect 8000
 Turboprops: Expect 6000



ARRIVAL ROUTE DESCRIPTION

BADGER TRANSITION (BAE.AGUDE5): From over BAE VOR/DME on BAE R-307 to ROBBY INT then on EAU R-123 to EAU VORTAC, then on EAU R-286 to AGUDE/EAU 41 DME. Thence. . . .

THATS TRANSITION (THATS.AGUDE5): From over THATS INT on GEP R-085 to AGUDE/GEP 42 DME. Thence. . . .

. . . . From over AGUDE/GEP 42 DME via GEP R-085 to GEP VORTAC, then expect RADAR vectors to final approach course.

AGUDE FIVE ARRIVAL
 (AGUDE:AGUDE5) 120CT17

(AGUDE:AGUDE5) 21112

AL-263 (FAA)

MINNEAPOLIS-ST PAUL, MINNESOTA

MINNEAPOLIS-ST PAUL, MINNESOTA