

| | | | |
|--|------------------------|---|-------------|
| WAAS CH 93844 W27A | APP CRS 267° | Rwy Idg TDZE 752 Apt Elev 752 | 3199 |
|--|------------------------|---|-------------|

RNAV (GPS) RWY 27

BUFFALO-LANCASTER RGNL (BQR)

RNP APCH - GPS.

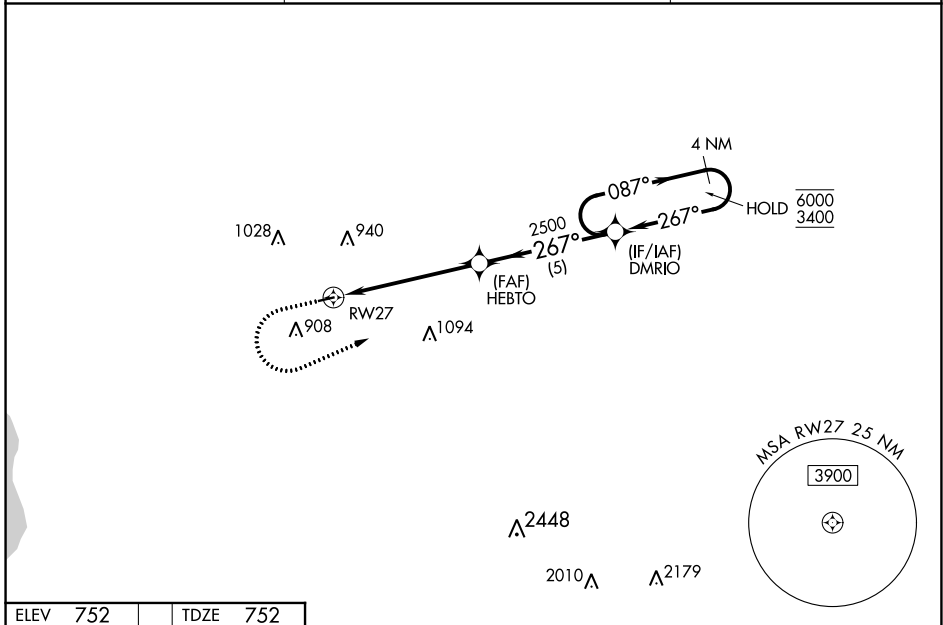
⚠ NA Rwy 27 helicopter visibility reduction below 1 SM NA. Baro-VNAV NA. Use Buffalo Niagara Intl altimeter setting. Straight-in Rwy 27 at night, Circling Rwy 27 at night, operational VGSI required, remain on or above VGSI glidepath until threshold.

MISSED APPROACH: Climb to 1300 then climbing left turn to 3400 direct DMRIO and hold, continue climb-in-hold to 3400.

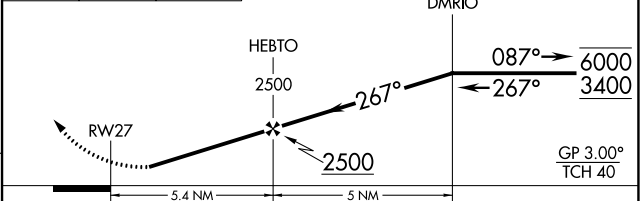
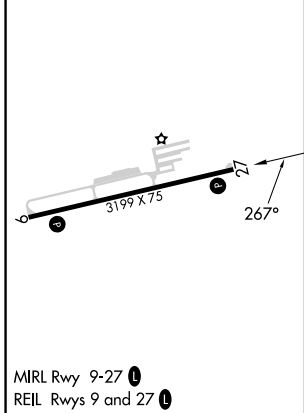
BUF ASOS
135.35

BUFFALO APP CON
126.15 263.125

UNICOM
123.05 (CTAF) 0



| | |
|-----------------|-----------------|
| ELEV 752 | TDZE 752 |
|-----------------|-----------------|



| CATEGORY | A | B | C | D |
|--------------|------------|-----------------|---|----|
| LPV DA | 1070-1 | 318 (400-1) | | NA |
| LNAV/VNAV DA | 1164-1 1/8 | 412 (500-1 1/8) | | NA |
| LNAV MDA | 1320-1 | 568 (600-1) | | NA |
| CIRCLING | 1320-1 | 568 (600-1) | | NA |

NE-2, 22 FEB 2024 to 21 MAR 2024

NE-2, 22 FEB 2024 to 21 MAR 2024

| | | |
|-------------|----------|-------------|
| APP CRS | Rwy Idg | 3199 |
| 087° | TDZE | 752 |
| | Apt Elev | 752 |

RNAV (GPS) RWY 9

BUFFALO-LANCASTER RGNL (BQR)

RNP APCH - GPS.

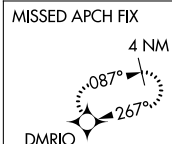
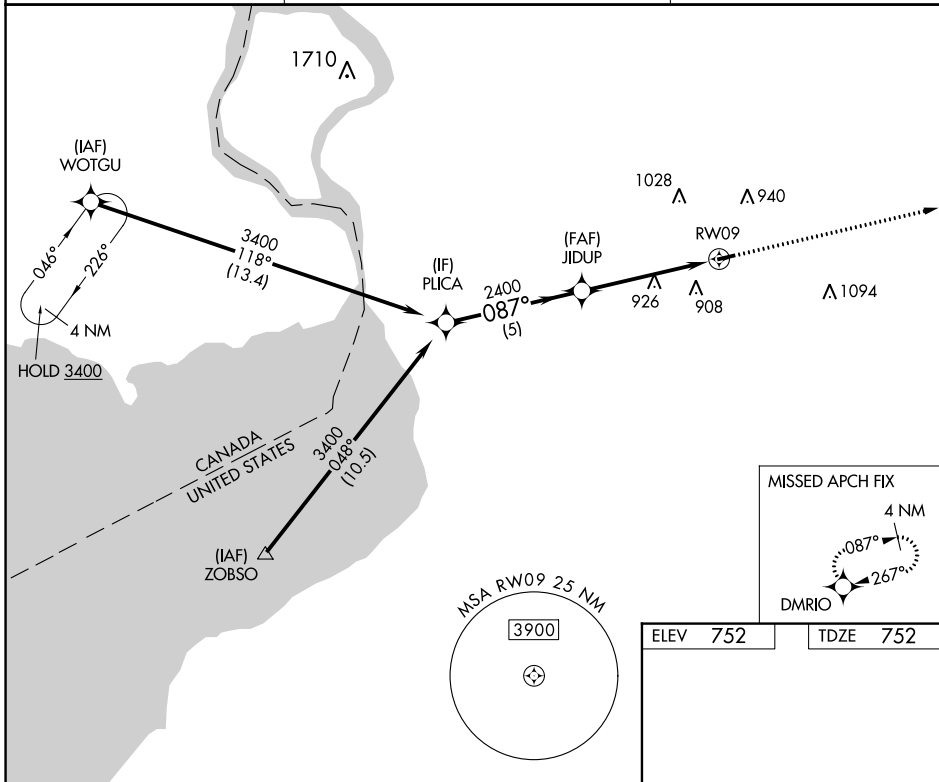
⚠ NA When Circling to Rwy 27 at night, operational VGSI required, remain on or above VGSI glidepath until threshold. Rwy 9 helicopter visibility reduction below 3/4 SM NA. Use Buffalo Niagara Intl altimeter setting.

MISSED APPROACH: Climb to 3400 direct DMRIO and hold, continue climb-in-hold to 3400.

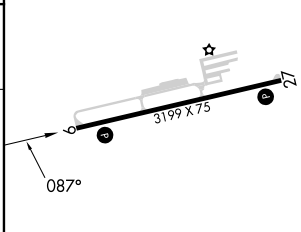
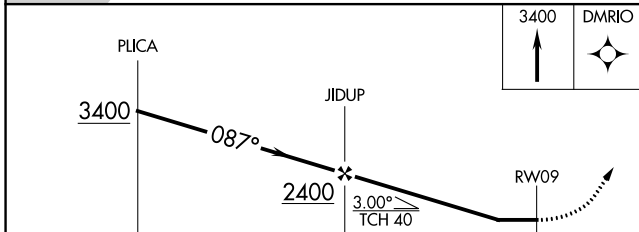
BUF ASOS
135.35

BUFFALO APP CON
126.15 263.125

UNICOM
123.05 (CTAF) 0



| | |
|----------|----------|
| ELEV 752 | TDZE 752 |
|----------|----------|



| CATEGORY | A | B | C | D |
|----------|-----------------------|-----------------------|---|----|
| LNVA MDA | 1200-1 | 448 (500-1) | | NA |
| CIRCLING | 1220-1 468 (500-1) | 1320-1 568 (600-1) | | NA |

MIRL Rwy 9-27 0
REIL Rws 9 and 27 0

NE-2, 22 FEB 2024 to 21 MAR 2024

NE-2, 22 FEB 2024 to 21 MAR 2024