

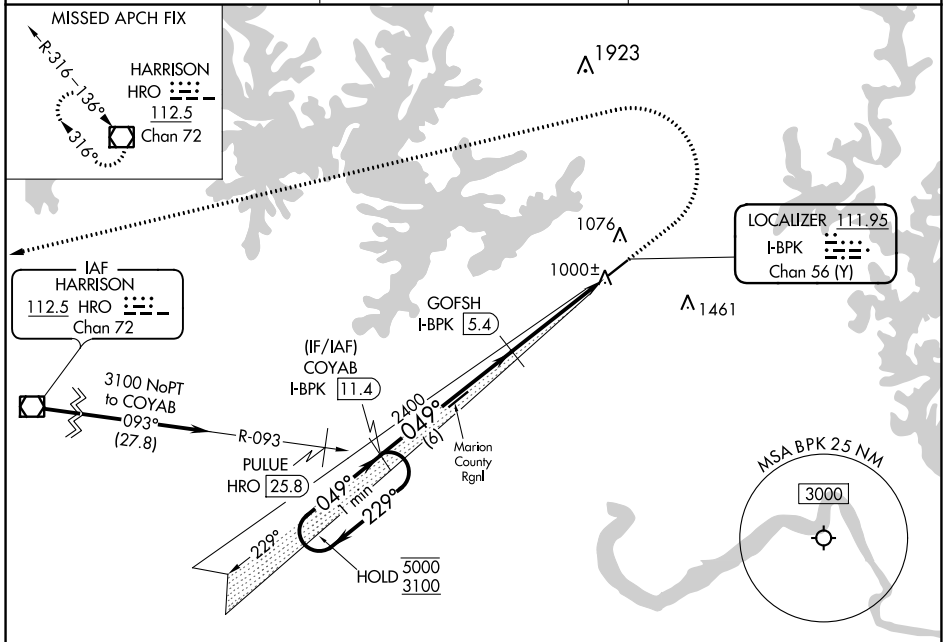
LOC/DME I-BPK <b>111.95</b> Chan 56(Y)	APP CRS <b>049°</b>	Rwy Idg TDZE <b>928</b> Apt Elev <b>928</b>
--	------------------------	---

# ILS or LOC RWY 5

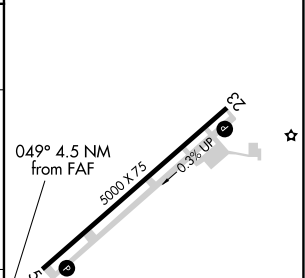
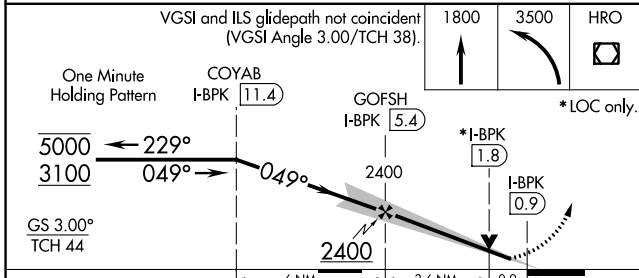
BAXTER COUNTY (BPK)

DME required.	MISSED APPROACH: Climb to 1800 then climbing left turn to 3500 direct HRO VOR/DME and hold.
<p>▼ Circling NA for Cat C, southeast of Rwy 5-23.</p> <p>▲ NA Circling to Rwy 23 NA at night.</p>	

ASOS <b>133.975</b>	MEMPHIS CENTER <b>126.85 281.55</b>	UNICOM <b>123.0</b> (CTAF) <b>0</b>
------------------------	--	--



ELEV 928	TDZE 928
----------	----------



CATEGORY	A	B	C	D
S-ILS 5	1178-3/4	250 (300-3/4)		NA
S-LOC 5	1260-1	332 (400-1)		NA
<b>C</b> CIRCLING	1380-1 452 (500-1)	1400-1 472 (500-1)	1420-1 1/2 492 (500-1 1/2)	NA

REIL Rwy 5 and 23 **0**

MIRL Rwy 5-23 **0**

SC-1, 22 FEB 2024 to 21 MAR 2024

SC-1, 22 FEB 2024 to 21 MAR 2024

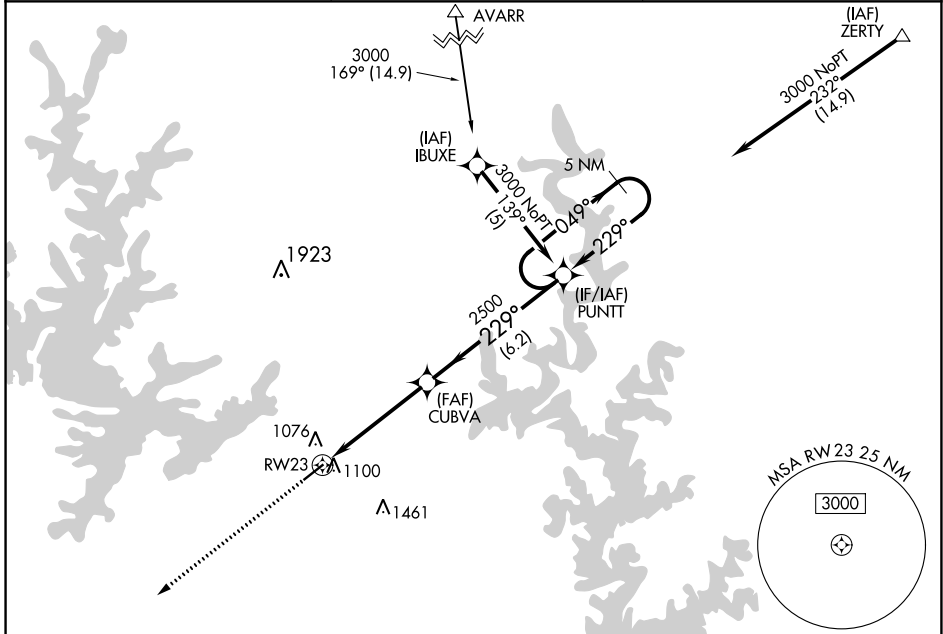
APP CRS	Rwy Idg	<b>5000</b>
<b>229°</b>	TDZE	<b>919</b>
	Apt Elev	<b>928</b>

# RNAV (GPS) RWY 23

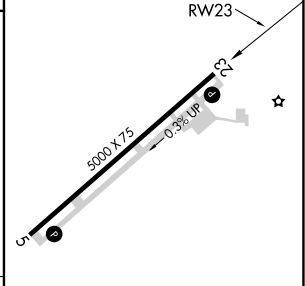
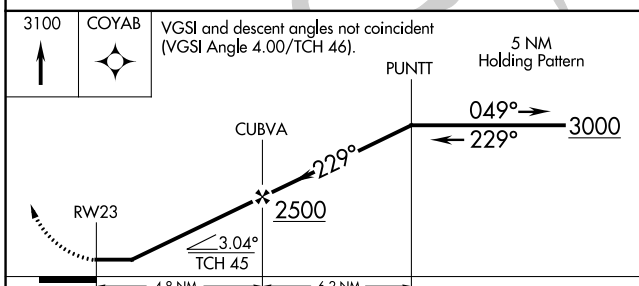
BAXTER COUNTY (BPK)

RNP APCH	MISSED APPROACH: Climb to 3100 direct COYAB and hold.
<p>▼ Rwy 23 helicopter visibility reduction below 1 SM NA. When local altimeter setting not received, use Flippin altimeter setting and increase all MDAs 60 feet. Circling NA for Cat C, southeast of Rwy 5-23. Straight-in Rwy 23 NA at night. Circling Rwy 23 NA at night.</p>	

ASOS <b>133.975</b>	MEMPHIS CENTER <b>126.85 281.55</b>	UNICOM <b>123.0</b> (CTAF) <b>0</b>
------------------------	--	--



ELEV 928	TDZE 919
----------	----------



CATEGORY	A	B	C	D
LNVA MDA	1360-1	441 (500-1)	1360-1 $\frac{3}{8}$ 441 (500-1 $\frac{3}{8}$ )	NA
CIRCLING	1400-1	472 (500-1)	1420-1 $\frac{1}{2}$ 492 (500-1 $\frac{1}{2}$ )	NA

REIL Rwy 5 and 23 **0**  
MIRL Rwy 5-23 **0**

SC-1, 22 FEB 2024 to 21 MAR 2024

SC-1, 22 FEB 2024 to 21 MAR 2024

WAAS CH <b>69300</b> <b>W05A</b>	APP CRS <b>049°</b>	Rwy Idg <b>5000</b> TDZE <b>928</b> Apt Elev <b>928</b>
--	------------------------	---

# RNAV (GPS) RWY 5

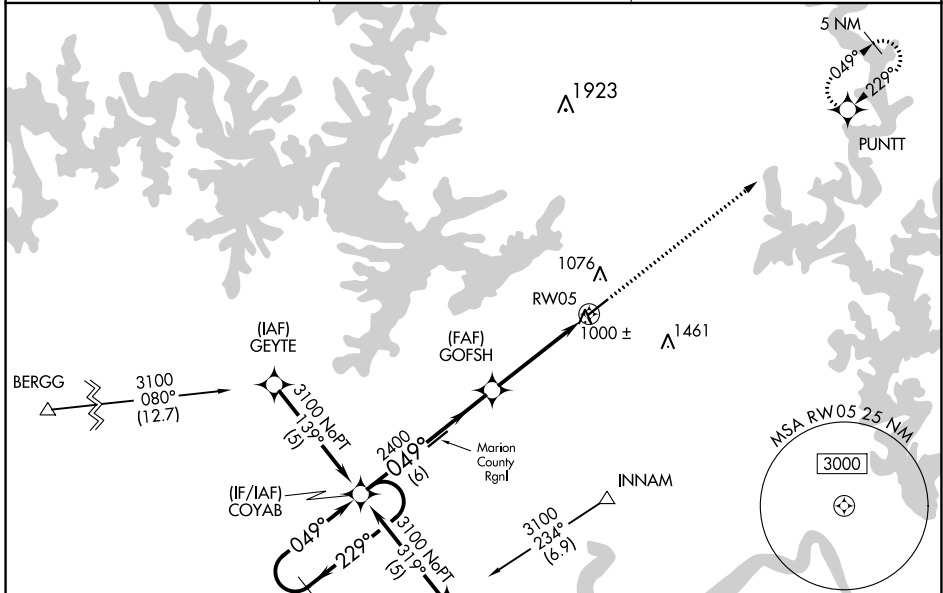
BAXTER COUNTY (BPK)

RNP APCH.

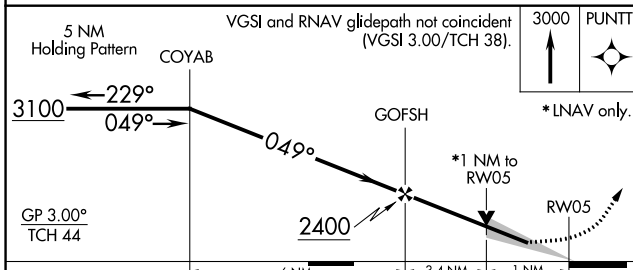
▼ For uncompensated Baro-VNAV systems, LNAV/VNAV NA below -16°C (4°F) or above 54°C (130°F). When local altimeter setting not received, use Flippin altimeter setting: increase LPV DA to 1261 feet, LNAV/VNAV DA to 1310 feet; increase all MDAs 60 feet and visibility LNAV Cat C 1/8 SM. Baro-VNAV NA when using Flippin altimeter setting. Circling NA for Cat C, SE of Rwy 5-23. Circling Rwy 23 NA at night.

MISSED APPROACH: Climb to 3000 direct PUNTT and hold.

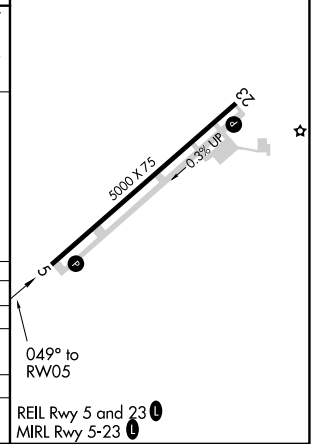
ASOS <b>133,975</b>	MEMPHIS CENTER <b>126.85 281.55</b>	UNICOM <b>123.0 (CTAF)</b>
------------------------	--	-------------------------------



ELEV 928	TDZE 928
----------	----------



CATEGORY	A	B	C	D
LPV DA	1201-1	273 (300-1)		NA
LNAV/VNAV DA	1250-1 1/4	322 (400-1 1/4)		NA
LNAV MDA	1280-1	352 (400-1)		NA
CIRCLING	1400-1	472 (500-1)	1420-1 1/2 492 (500-1 1/2)	NA



SC-1, 22 FEB 2024 to 21 MAR 2024

SC-1, 22 FEB 2024 to 21 MAR 2024