

WAAS CH <b>50426</b> W35A	APP CRS <b>358°</b>	Rwy Idg <b>8900</b> TDZE <b>4230</b> Apt Elev <b>4230</b>
---------------------------------	------------------------	---

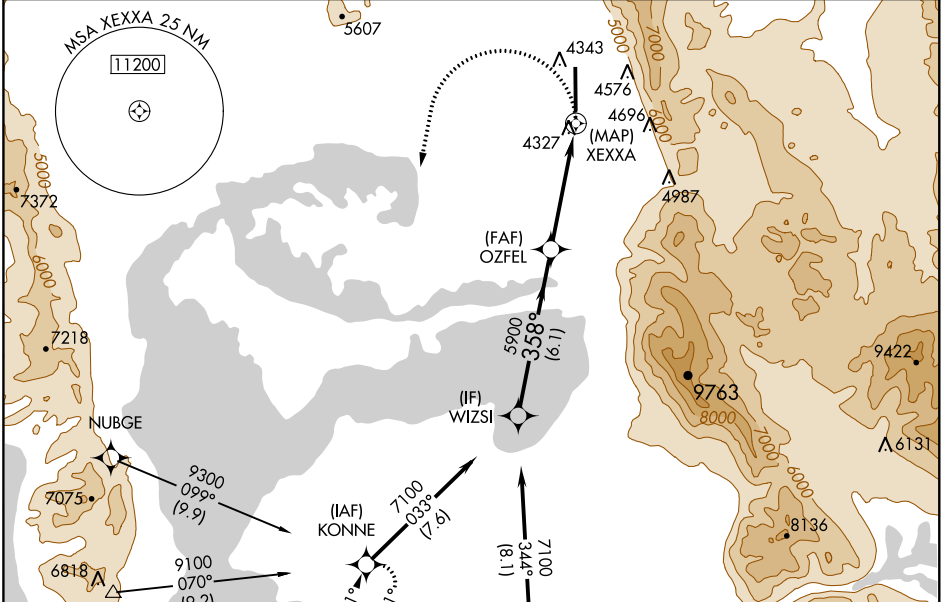
# RNAV (GPS) RWY 35

BRIGHAM CITY RGNL (BMC)

**▼** When local altimeter setting not received, use Ogden altimeter setting and increase all MDA 100 feet, increase LP Cat C visibility ¼ mile, increase LNAV Cat B visibility ¼ mile, and Cat C visibility ⅓ mile, increase Circling Cat B visibility ¼ mile, and Cat C visibility ½ mile.  
**▲ NA** DME/DME RNP-0.3 NA. VDP NA with Ogden altimeter setting. Rwy 35 helicopter visibility reduction below ¾ SM NA.

**MISSED APPROACH:**  
 Climbing left turn to 7100 direct KONNE and hold.

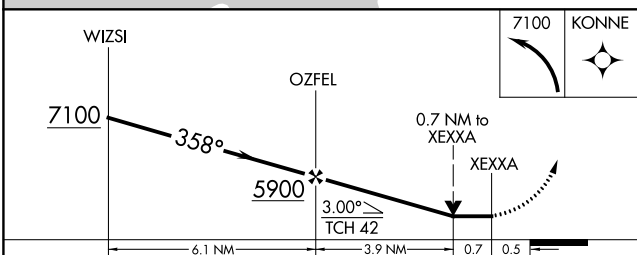
AWOS-3 <b>135.075</b>	SALT LAKE CITY APP CON <b>121.1 319.25</b>	CLNC DEL <b>126.0</b>	UNICOM <b>123.05 (CTAF) 0</b>
--------------------------	---	--------------------------	----------------------------------



SW-4, 17 JUN 2021 to 15 JUL 2021

SW-4, 17 JUN 2021 to 15 JUL 2021

Procedure NA for arrivals on OGD VORTAC airway radials 302 CW 068.



ELEV 4230	TDZE 4230
-----------	-----------

MIRL Rwy 17-35 0  
 REIL Rwy 17 and 35 0

CATEGORY	A	B	C	D
LP MDA	4660-1	430 (500-1)	4660-1¼ 430 (500-1¼)	NA
LNAV MDA	4900-1	670 (700-1)	4900-1⅞ 670 (700-1⅞)	NA
CIRCLING	4900-1	670 (700-1)	5020-2¼ 790 (800-2¼)	NA