

LOC/DME I-BFT 109.75 Chan 34 (Y)	APP CRS 245°	Rwy Idg TDZE Apt Elev	24R 6003 583 584	24L 5199 584 584
--	------------------------	-----------------------------	--	--

ILS or LOC RWY 24R

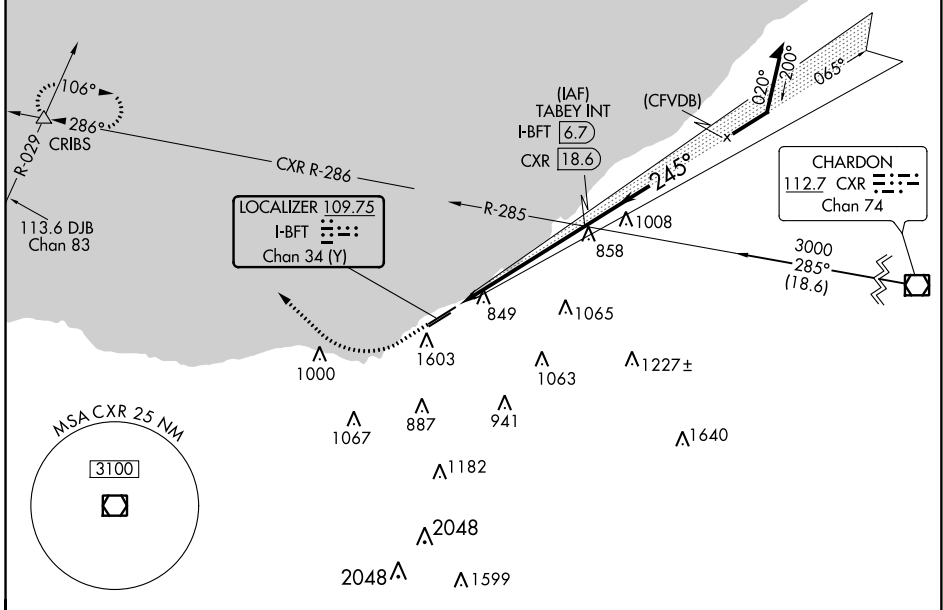
BURKE LAKEFRONT (BKL)

RADAR or DME required for procedure entry.

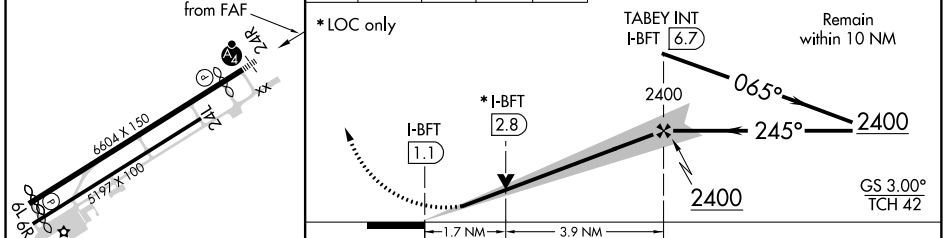
MAJORITY MALSF

MISSED APPROACH: Climb to 1000 then climbing right turn to 2000 on heading 350° to CXR R-286 then climb to 3000 on CXR VOR/DME R-286 to CRIBS INT and hold.

ATIS 125.25	CLEVELAND APP CON 125.35 346.325	LAKEFRONT TOWER * 124.3 (CTAF) 0 339.8	GND CON 121.9 339.8	CLNC DEL 339.8	CLNC DEL 121.9 (when twr closed)	UNICOM 122.95
-----------------------	--	---	-------------------------------	--------------------------	---	-------------------------



ELEV 584	D TDZE 24R 583 TDZE 24L 584	1000	2000	3000	CRIBS	VGSI and ILS glidepath not coincident (VGSI Angle 3.00/TCH 42).
----------	---------------------------------------	------	------	------	-------	--



REIL Rwy 6L and 24L HIRL Rwy 6L-24R and 6R-24L FAF to MAP 5.6 NM	CATEGORY	A	B	C	D
	S-ILS 24R	917-3/4 334 (400-3/4)			
	S-LOC 24R	1160-3/4	577 (600-3/4)	1160-1 3/8	577 (600-1 3/8)
	SIDESTEP 24L	1160-1	576 (600-1)	1160-1 5/8	576 (600-1 5/8)
	CIRCLING	1160-1	577 (600-1)	1160-1 5/8	577 (600-2)

EC-2, 28 JAN 2021 to 25 FEB 2021

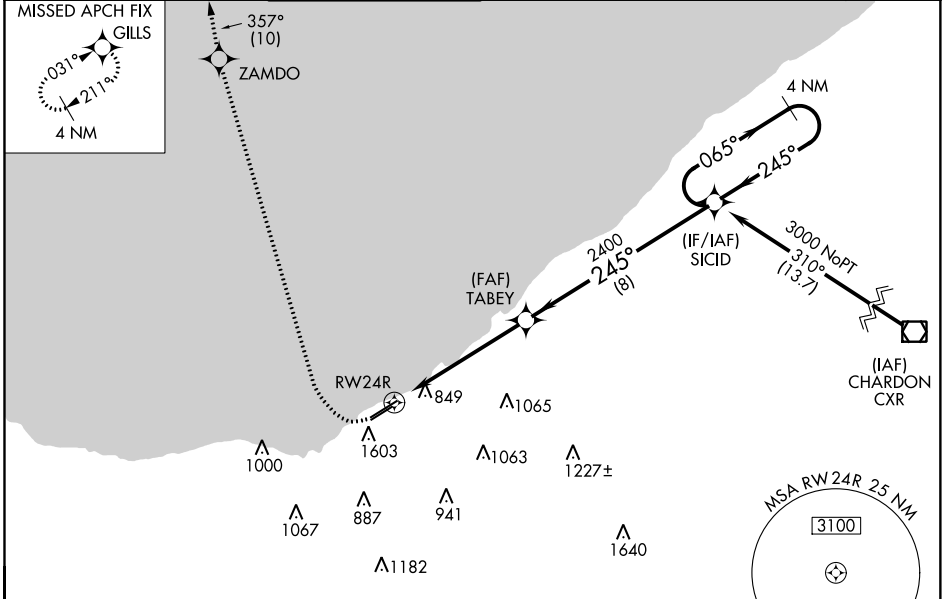
EC-2, 28 JAN 2021 to 25 FEB 2021

WAAS CH 77621 W24A	APP CRS 245°	Rwy Idg TDZE Apt Elev	6003 583 584
--	------------------------	-----------------------------	---

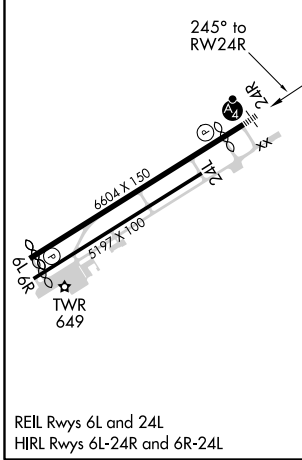
RNAV (GPS) RWY 24R

BURKE LAKEFRONT (BKL)

RNP APCH.		<p>▼ For uncompensated Baro-VNAV systems, LNAV/VNAV NA below -16°C (4°F) or above 40°C (104°F). Circling Rwy 6R NA at night. Rwy 24R helicopter visibility reduction below ¾ SM NA. Circling NA southeast of Rwy 6R and 24L. For inop ALS, increase LNAV Cat C and D visibility to 3 SM.</p>		<p>MALSF</p>		<p>MISSED APPROACH: Climbing right turn to 2000 direct ZAMDO then climb to 4000 on track 357° to GILLS and hold. # Missed approach requires minimum climb of 421 feet per NM to 1900.</p>	
ATIS 125.25	CLEVELAND APP CON 125.35 346.325	LAKEFRONT TOWER ★ 124.3 (CTAF) 0 339.8	GND CON 121.9 339.8	CLNC DEL 339.8	CLNC DEL 121.9 (when twr closed)	UNICOM 122.95	



ELEV	584	D	TDZE	583
------	------------	----------	------	------------



2000	ZAMDO	4000	GILLS	VGSI and RNAV glidepath not coincident (VGSI Angle 3.00/TCH 42).	4 NM Holding Pattern
*LNAV only.				TABEY	SICID
*3.1 NM to RWY24R		2400	245°	065°	3000
-3.1 NM -		-2.5 NM -	8 NM		GP 3.00° TCH 42

CATEGORY	A	B	C	D
LPV DA	1401-2½		818 (900-2½)	
LPV DA #	NA		1249-1⅞ 666 (700-1⅞)	
LNAV/VNAV DA	1324-2½		741 (800-2½)	
LNAV MDA	1620-1 1037 (1100-1)	1620-1¼ 1037 (1100-1¼)	1620-2½	1037 (1100-2½)
CIRCLING	1620-1¼	1036 (1100-1¼)	1620-3	1036 (1100-3)

EC-2, 28 JAN 2021 to 25 FEB 2021

EC-2, 28 JAN 2021 to 25 FEB 2021