

NDB BHC	APP CRS	Rwy Idg	5003
<b>376</b>	<b>089°</b>	TDZE	201
		Apt Elev	201

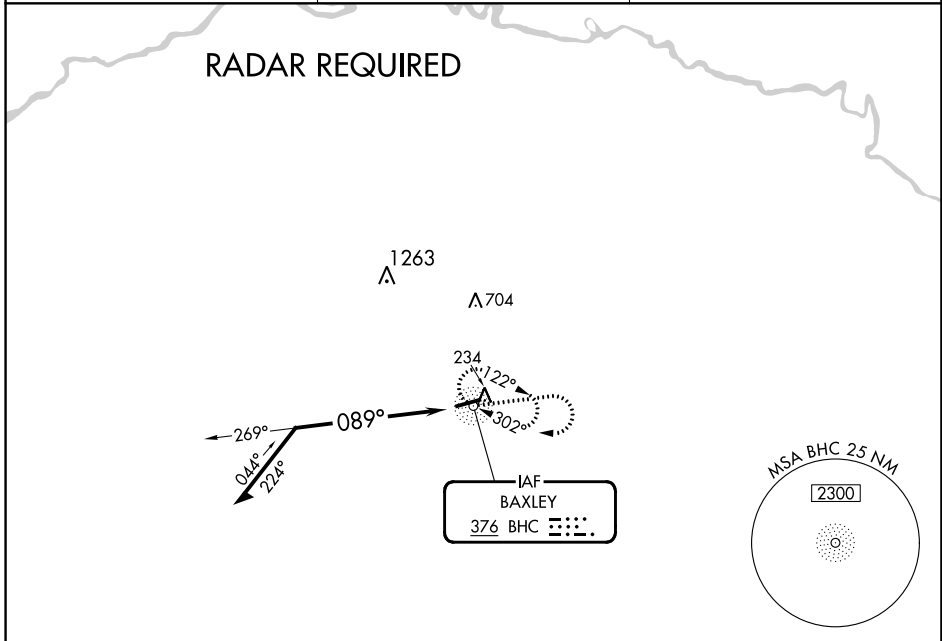
# NDB RWY 8

BAXLEY MUNI (BHC)

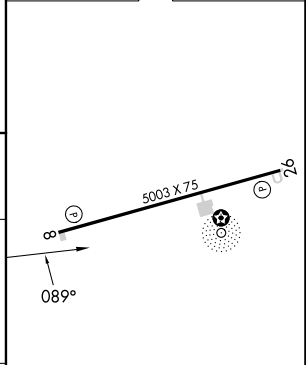
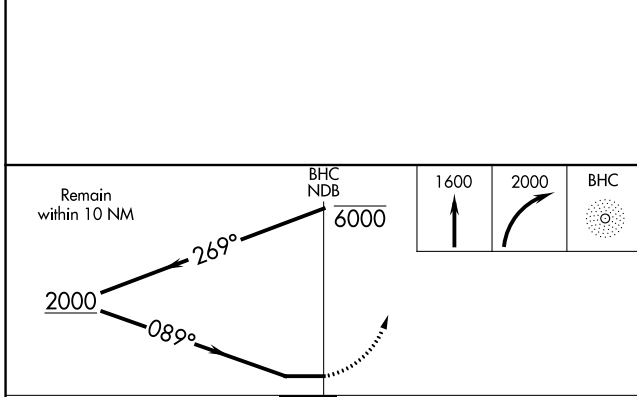
**▼** Helicopter visibility reduction below 3/4 SM NA. When local altimeter setting not received, use Alma altimeter setting and increase all MDAs 40 feet and visibility Cat D 1/4 SM.

**▲ NA** MISSED APPROACH: Climb to 1600 then climbing right turn to 2000 direct BHC NDB and hold.

AWOS-3PT <b>118.2</b>	JACKSONVILLE CENTER <b>127.575 269.025</b>	UNICOM <b>122.8 (CTAF)</b>
--------------------------	---	-------------------------------



ELEV 201	TDZE 201
----------	----------



CATEGORY	A	B	C	D
S-8	800-1	599 (600-1)	800-1 3/4	599 (600-1 3/4)
CIRCLING	800-1	599 (600-1)	800-1 3/4	1060-2 3/4 859 (900-2 3/4)

MIRL Rwy 8-26

SE-4, 22 FEB 2024 to 21 MAR 2024

SE-4, 22 FEB 2024 to 21 MAR 2024

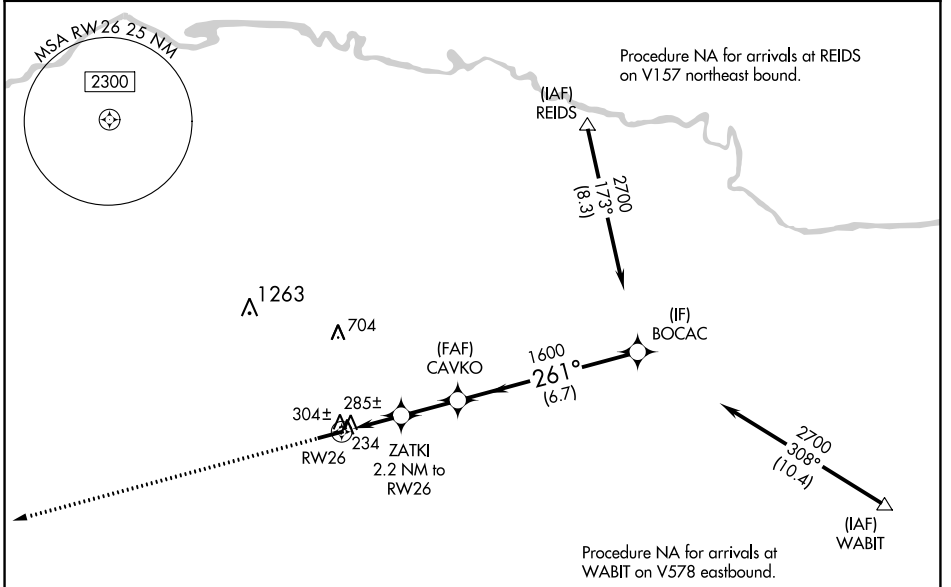
WAAS CH <b>70727</b> <b>W26A</b>	APP CRS <b>261°</b>	Rwy Idg TDZE Apt Elev	<b>5003</b> <b>201</b> <b>201</b>
--	------------------------	-----------------------------	---

# RNAV (GPS) RWY 26

BAXLEY MUNI (BHC)

RNP APCH-GPS.	MISSED APPROACH: Climb to 2300 direct KIVEC and hold.
<p>▼ Helicopter visibility reduction below 3/4 SM NA. When local altimeter setting not received, use Alma altimeter setting and increase all MDAs 40 feet and visibility Cat C 1/2 SM and Cat D 1/4 SM.</p> <p>▲ NA</p>	

AWOS-3PT <b>118.2</b>	JACKSONVILLE CENTER <b>127.575 269.025</b>	UNICOM <b>122.8(CTAF) 0</b>
--------------------------	---	--------------------------------



SE-4, 22 FEB 2024 to 21 MAR 2024

SE-4, 22 FEB 2024 to 21 MAR 2024

ELEV 201	TDZE 201	MISSED APCH FIX																												
		2300	KIVEC																											
		<table border="1"> <tr> <td></td> <td>2.2 NM</td> <td>2.1 NM</td> <td>6.7 NM</td> <td></td> </tr> <tr> <td>CATEGORY</td> <td>A</td> <td>B</td> <td>C</td> <td>D</td> </tr> <tr> <td>LP MDA</td> <td colspan="4">540-1 339 (400-1)</td> </tr> <tr> <td>LNAV MDA</td> <td colspan="4">560-1 359 (400-1)</td> </tr> <tr> <td>CIRCLING</td> <td>620-1 419 (500-1)</td> <td>700-1 499 (500-1)</td> <td>700-1½ 499 (500-1½)</td> <td>1060-2¾ 859 (900-2¾)</td> </tr> </table>					2.2 NM	2.1 NM	6.7 NM		CATEGORY	A	B	C	D	LP MDA	540-1 339 (400-1)				LNAV MDA	560-1 359 (400-1)				CIRCLING	620-1 419 (500-1)	700-1 499 (500-1)	700-1½ 499 (500-1½)	1060-2¾ 859 (900-2¾)
	2.2 NM	2.1 NM	6.7 NM																											
CATEGORY	A	B	C	D																										
LP MDA	540-1 339 (400-1)																													
LNAV MDA	560-1 359 (400-1)																													
CIRCLING	620-1 419 (500-1)	700-1 499 (500-1)	700-1½ 499 (500-1½)	1060-2¾ 859 (900-2¾)																										

WAAS CH <b>53727</b> <b>W08A</b>	APP CRS <b>081°</b>	Rwy Idg TDZE Apt Elev	<b>5003</b> <b>201</b> <b>201</b>
--	------------------------	-----------------------------	---

# RNAV (GPS) RWY 8

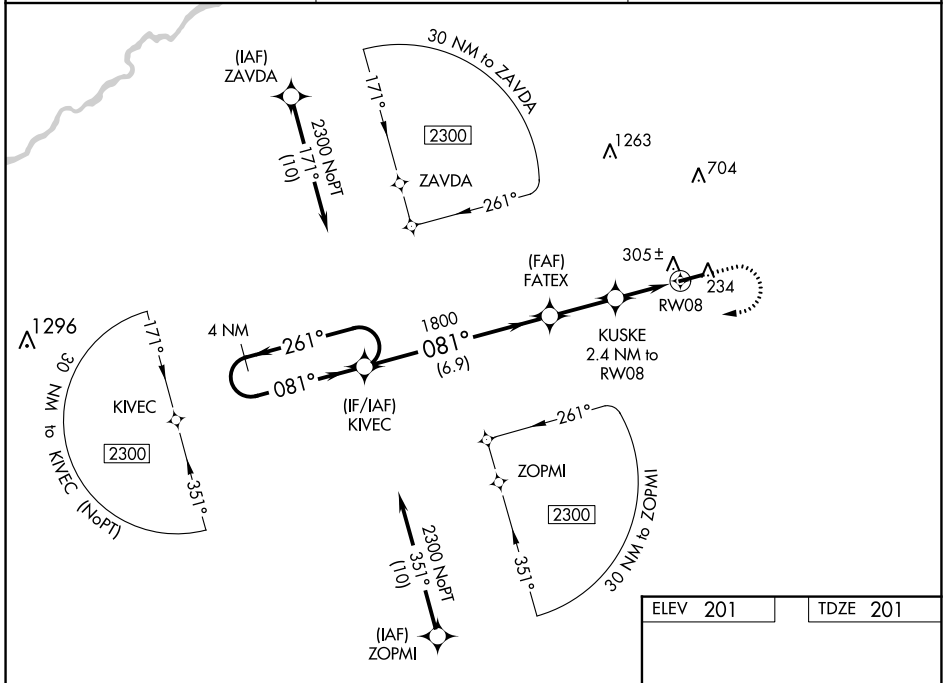
BAXLEY MUNI (BHC)

RNP APCH-GPS.

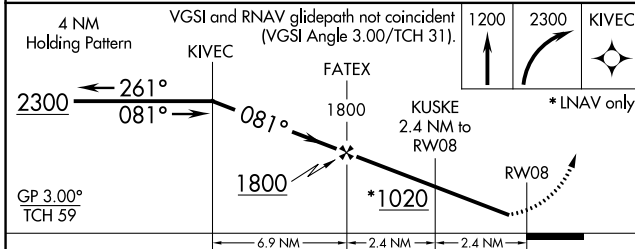
**NA** Baro-VNAV NA when using Alma altimeter setting. For uncompensated Baro-VNAV systems, LNAV/VNAV NA below -15°C or above 54°C. When local altimeter setting not received, use Alma altimeter setting: increase LPV DA to 513 feet; increase LNAV/VNAV DA to 515 feet; increase all MDAs 40 feet and visibility Cat C ½ SM and visibility Cat D ¾ SM. Helicopter visibility reduction below ¾ SM NA.

**MISSED APPROACH:** Climb to 1200 then climbing right turn to 2300 direct KIVEC and hold.

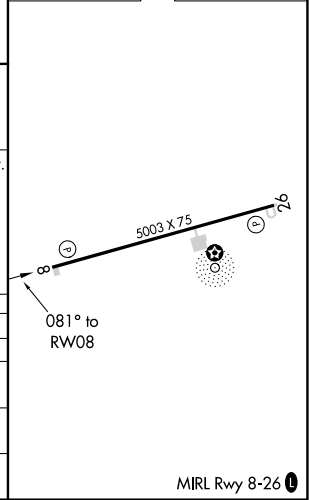
AWOS-3PT <b>118.2</b>	JACKSONVILLE CENTER <b>127.575 269.025</b>	UNICOM <b>122.8 (CTAF)</b>
--------------------------	---	-------------------------------



ELEV 201	TDZE 201
----------	----------



CATEGORY	A	B	C	D
LPV DA		484-1	283 (300-1)	
LNAV/VNAV DA		486-1	285 (300-1)	
LNAV MDA		560-1	359 (400-1)	
CIRCLING	620-1 419 (500-1)	700-1 499 (500-1)	700-1½ 499 (500-1½)	1060-2¾ 859 (900-2¾)



SE-4, 22 FEB 2024 to 21 MAR 2024

SE-4, 22 FEB 2024 to 21 MAR 2024