

LOC/DME I-BDR 110.7 Chan 44	APP CRS 060°	Rwy Idg 4677
		TDZE 7
		Apt Elev 9

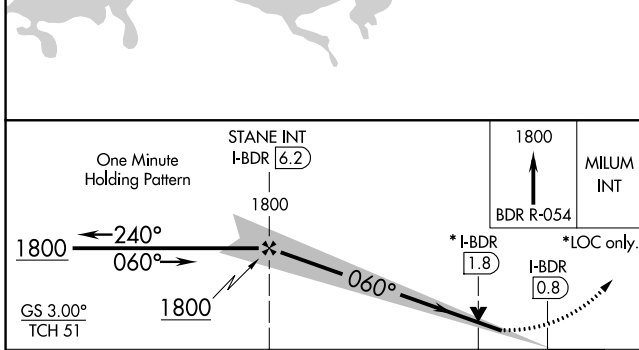
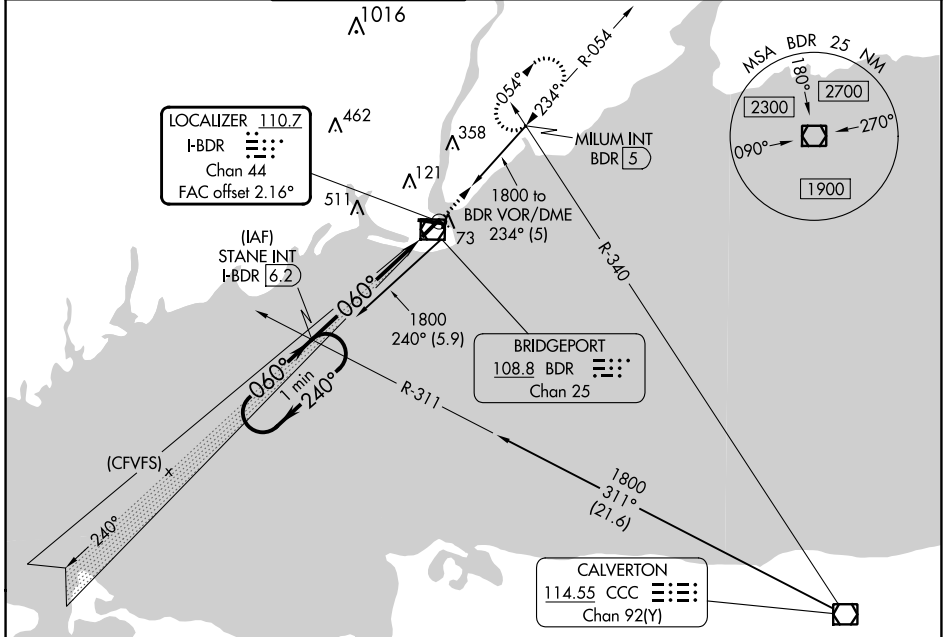
ILS or LOC RWY 6

BRIDGEPORT/SIKORSKY (BDR)

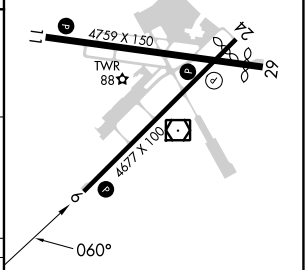
Autopilot coupled approach NA below 350.
⚠ Circling Rwy 11, 29 NA at night.
Rwy 6 helicopter visibility reduction below ¾ SM NA.

MISSED APPROACH: Climb to 1800 on the BDR VOR/DME R-054 to MILUM INT and hold.

ATIS 119.15	NEW YORK APP CON 124.075 343.65	BRIDGEPORT TOWER* 120.9 (CTAF) 257.8	GND CON 121.75 257.8	CLNC DEL 121.75	CLNC DEL 124.075 (When twr closed)	UNICOM 123.0
-----------------------	---	---	--------------------------------	---------------------------	---	------------------------



ELEV	9	TDZE	7
------	---	------	---



CATEGORY	A	B	C	D
S-ILS 6		257-¾	250 (300-¾)	
S-LOC 6		380-1	373 (400-1)	
C CIRCLING	480-1 471 (500-1)	620-1 611 (700-1)	820-2½ 811 (900-2½)	820-2¾ 811 (900-2¾)

REIL Rws 6, 11, 24, and 29	
HIRL Rws 6-24 and 11-29	
FAF to MAP	5.5 NM
Knots	60 90 120 150 180
Min:Sec	5:30 3:40 2:45 2:12 1:50

NE-1, 22 FEB 2024 to 21 MAR 2024

NE-1, 22 FEB 2024 to 21 MAR 2024

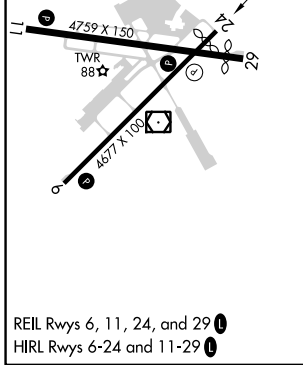
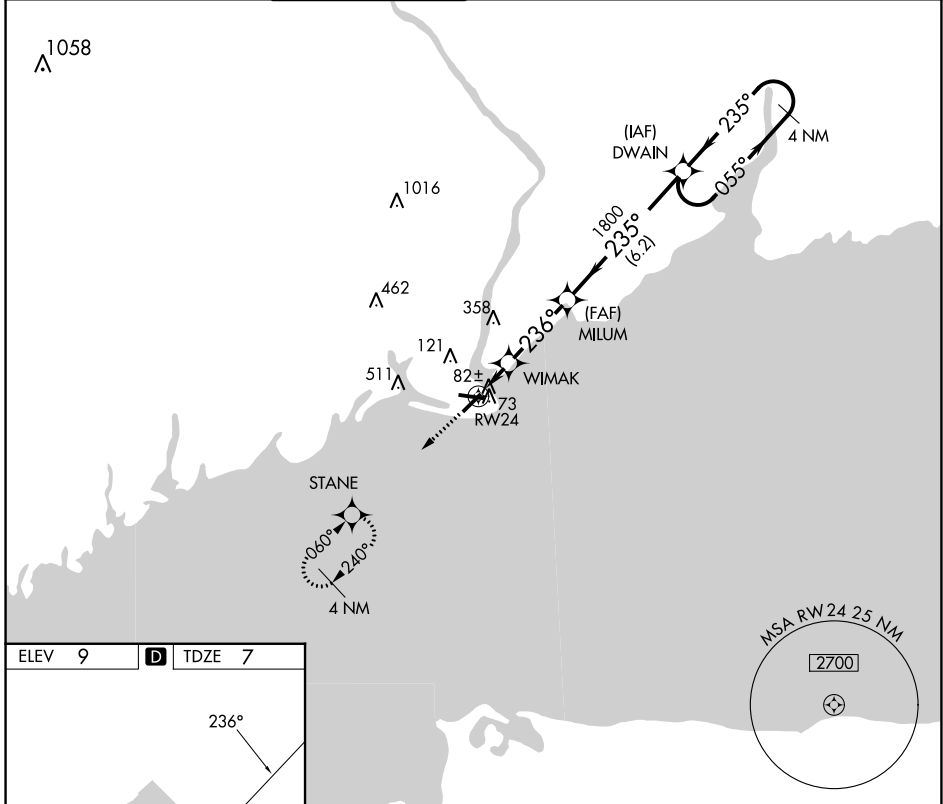
APP CRS 236°	Rwy Idg TDZE Apt Elev	4357 7 9
------------------------	-----------------------------	-------------------------------------

RNAV (GPS) RWY 24

BRIDGEPORT/SIKORSKY (BDR)

RNP APCH - GPS.		MISSED APPROACH: Climb to 1800 direct STANE and hold.	
Rwy 24 helicopter visibility reduction below 1 SM NA. Circling Rwy 11, 29 NA at night.			

ATIS 119.15	NEW YORK APP CON 124.075 343.65	BRIDGEPORT TOWER* 120.9 (CTAF) 257.8	GND CON 121.75 257.8	CLNC DEL 121.75	CLNC DEL 124.075 (When twr closed)	UNICOM 123.0
-----------------------	---	---	--------------------------------	---------------------------	---	------------------------



1800	STANE	VGSI and RNAV glidepath not coincident (VGSI Angle 3.00/TCH 52).	4 NM Holding Pattern
			DWAIN
		MILUM	055° → 2600
		WIMAK	← 235°
		RW24	
		640	3.50° TCH 54
		1800	
		1.6 NM	3.1 NM
		6.2 NM	
CATEGORY	A	B	C
LNAV MDA	380-1 373 (400-1)		
CIRCLING	480-1 471 (500-1)	620-1 611 (700-1)	820-2½ 811 (900-2½)
			820-2¾ 811 (900-2¾)

NE-1, 22 FEB 2024 to 21 MAR 2024

NE-1, 22 FEB 2024 to 21 MAR 2024

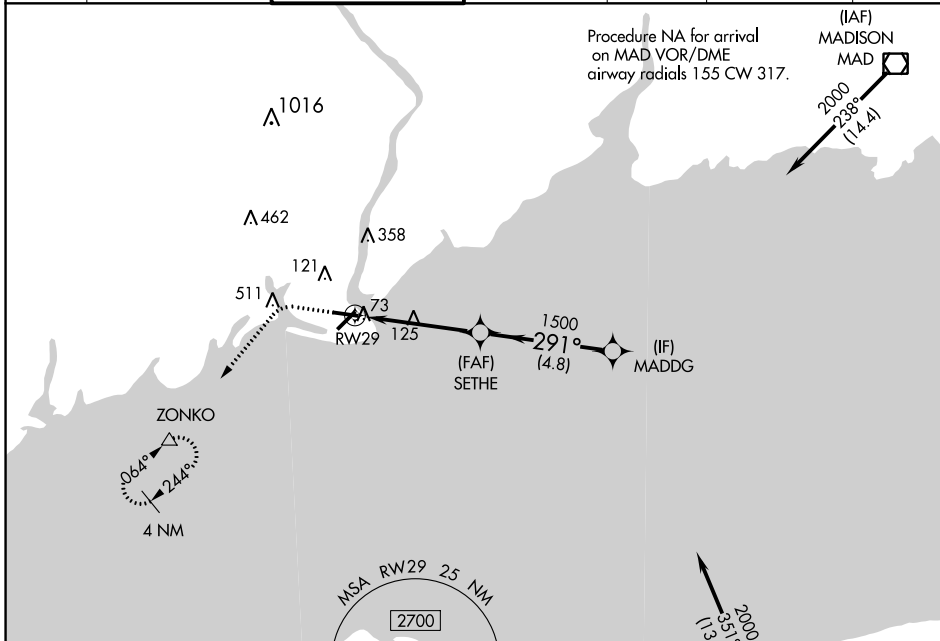
APP CRS 291°	Rwy Idg TDZE Apt Elev	4395 7 9
------------------------	-----------------------------	-------------------------------------

RNAV (GPS) RWY 29

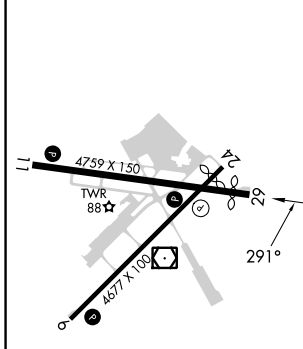
BRIDGEPORT/SIKORSKY (BDR)

RNP APCH - GPS.		MISSED APPROACH: Climb to 500 then climbing left turn to 2000 direct ZONKO and hold.				
<p>▼ Rwy 29 helicopter visibility reduction below 1 SM NA.</p> <p>▲ Circling Rwy 11, 29 NA at night. Rwy 29 Straight-in minimums NA at night.</p>						

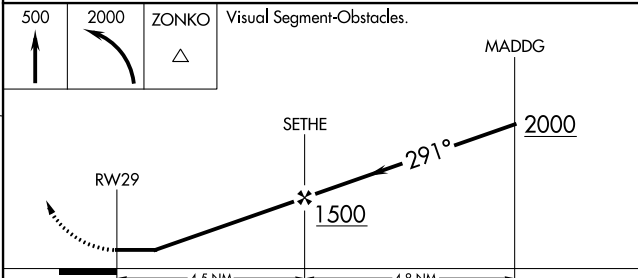
ATIS 119.15	NEW YORK APP CON 124.075 343.65	BRIDGEPORT TOWER* 120.9 (CTAF) 257.8	GND CON 121.75 257.8	CLNC DEL 121.75	CLNC DEL 124.075 (When twr closed)	UNICOM 123.0
-----------------------	---	---	--------------------------------	---------------------------	---	------------------------



ELEV 9	D	TDZE 7
--------	----------	--------



500	2000	ZONKO	Visual Segment-Obstacles.
↑	↶	△	



CATEGORY	A	B	C	D
LNAV MDA	380-1		373 (400-1)	
C CIRCLING	480-1 471 (500-1)	620-1 611 (700-1)	820-2½ 811 (900-2½)	820-2¾ 811 (900-2¾)

NE-1, 22 FEB 2024 to 21 MAR 2024

NE-1, 22 FEB 2024 to 21 MAR 2024

WAAS CH 78140 W06A	APP CRS 060°	Rwy Idg TDZE Apt Elev	4677 7 9
--	------------------------	-----------------------------	-------------------------------------

RNAV (GPS) RWY 6

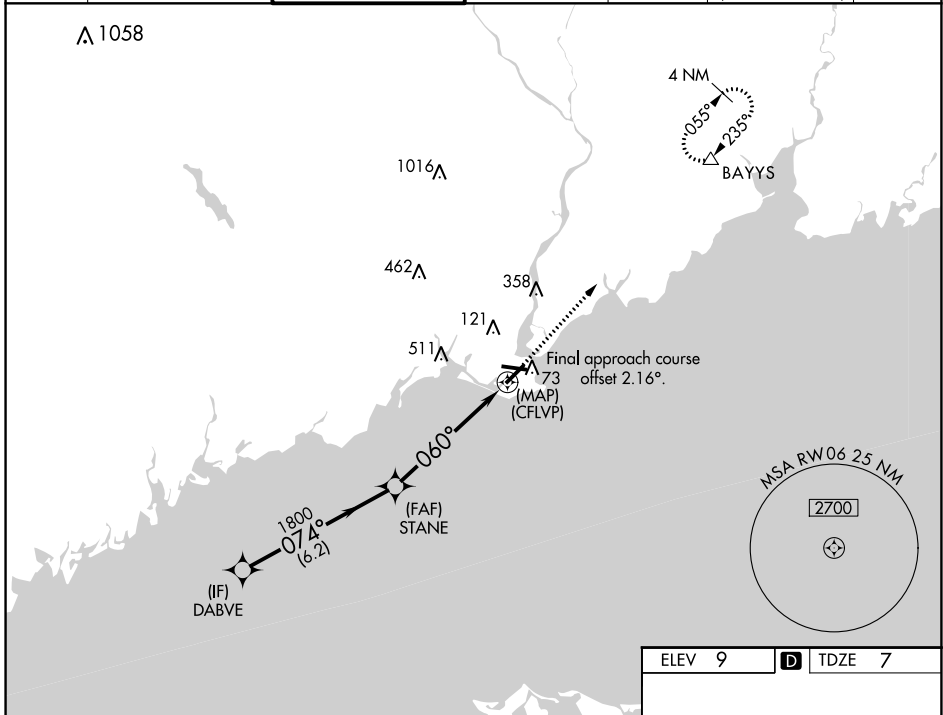
BRIDGEPORT/SIKORSKY (BDR)

RNP APCH - GPS.

▼ For uncompensated Baro-VNAV systems, LNAV/VNAV NA below -15°C or above 54°C.
▲ Circling Rwy 11, 29 NA at night. Rwy 6 helicopter visibility reduction below 3/4 SM NA.

MISSED APPROACH: Climb to 2600 direct BAYYS and hold.

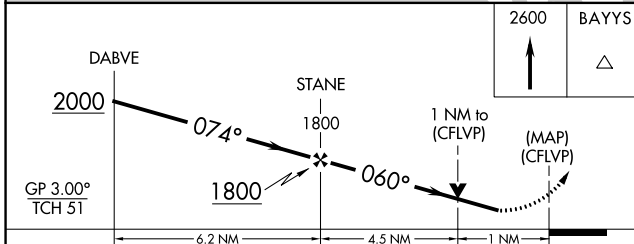
ATIS 119.15	NEW YORK APP CON 124.075 343.65	BRIDGEPORT TOWER* 120.9 (CTAF) 257.8	GND CON 121.75 257.8	CLNC DEL 121.75	CLNC DEL 124.075 (When twr closed)	UNICOM 123.0
-----------------------	---	---	--------------------------------	---------------------------	---	------------------------



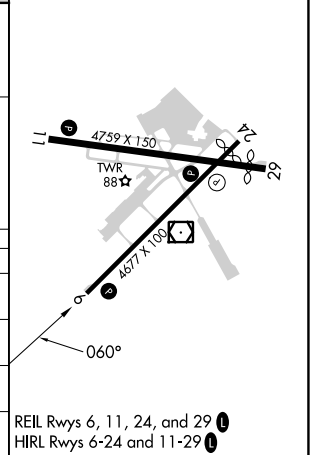
NE-1, 22 FEB 2024 to 21 MAR 2024

NE-1, 22 FEB 2024 to 21 MAR 2024

ELEV 9	D TDZE 7
--------	-----------------



CATEGORY	A	B	C	D
LPV DA		257-3/4	250 (300-3/4)	
LNAV/VNAV DA		284-7/8	277 (300-7/8)	
LNAV MDA		380-1	373 (400-1)	
C CIRCLING	480-1 471 (500-1)	620-1 611 (700-1)	820-2 1/2 811 (900-2 1/2)	820-2 3/4 811 (900-2 3/4)



REIL Rwys 6, 11, 24, and 29 **L**
HIRL Rwys 6-24 and 11-29 **L**