

(AIISS6,AIISS) 24025
AIISS SIX DEPARTURE (RNAV)

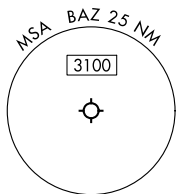
AL-6080 (FAA)

NEW BRAUNFELS NTL (BAZ)
NEW BRAUNFELS, TEXAS

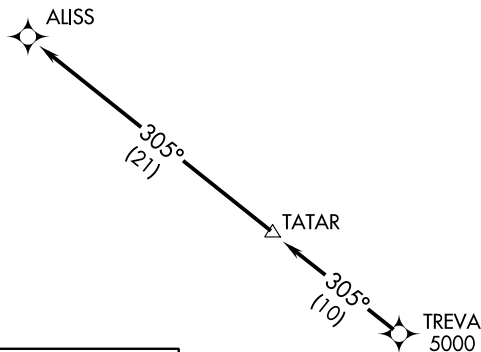
SAN ANTONIO DEP CON
128.05 290.225
ATIS
119.325
CLNC DEL
134.75
GND CON
120.175
NEW BRAUNFELS TOWER★
127.05 285.4

**TOP ALTITUDE:
ASSIGNED BY ATC**

RNAV 1 - GPS.
RADAR required.



TAKEOFF MINIMUMS
Rwys 13, 17, 31, 35: Standard.



DEPARTURE ROUTE DESCRIPTION

TAKEOFF RUNWAY 13: Climb on heading 128° or as assigned by ATC, for vectors to TREVA, thence . . .

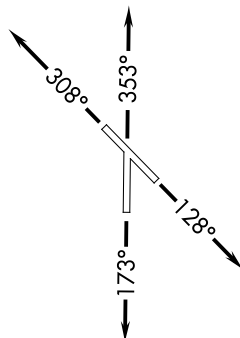
TAKEOFF RUNWAY 17: Climb on heading 173° or as assigned by ATC, for vectors to TREVA, thence . . .

TAKEOFF RUNWAY 31: Climb on heading 308° or as assigned by ATC, for vectors to TREVA, thence . . .

TAKEOFF RUNWAY 35: Climb on heading 353° or as assigned by ATC, for vectors to TREVA, thence . . .

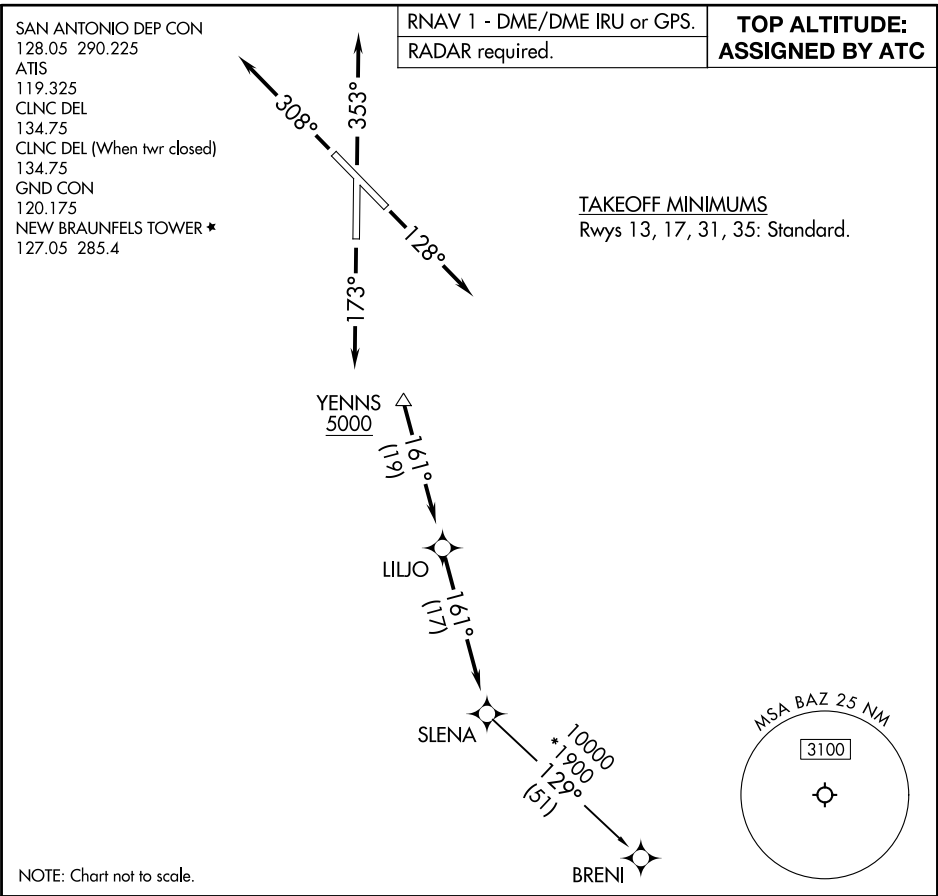
. . . on track 305° to TATAR, then on track 305° to ALISS.
Maintain ATC assigned altitude.

NOTE: Chart not to scale.



AIISS SIX DEPARTURE (RNAV)
(AIISS6,AIISS) 25JAN24

NEW BRAUNFELS, TEXAS
NEW BRAUNFELS NTL (BAZ)



▼DEPARTURE ROUTE DESCRIPTION

TAKEOFF RUNWAY 13: Climb on heading 128° or as assigned by ATC, for vectors to YENNS, thence

TAKEOFF RUNWAY 17: Climb on heading 173° or as assigned by ATC, for vectors to YENNS, thence

TAKEOFF RUNWAY 31: Climb on heading 308° or as assigned by ATC, for vectors to YENNS, thence

TAKEOFF RUNWAY 35: Climb on heading 353° or as assigned by ATC, for vectors to YENNS, thence

. . . . on track 161° to LILJO, then on track 161° to SLENA, then on transition.

Maintain ATC assigned altitude.

BRENI TRANSITION (SLENA1.BRENI)

SNDR ONE DEPARTURE (RNAV)
(SNDR1.SNDR) 25JAN24

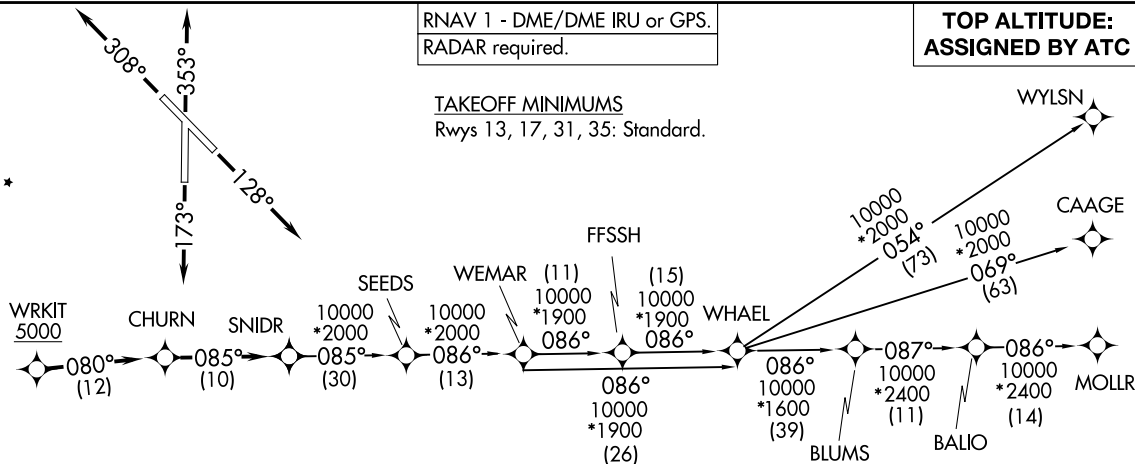
SAN ANTONIO DEP CON
128.05 290.225
ATIS
119.325
CLNC DEL
134.75
GND CON
120.175
NEW BRAUNFELS TOWER *
127.05 285.4

RNAV 1 - DME/DME IRU or GPS.
RADAR required.

TOP ALTITUDE:
ASSIGNED BY ATC

TAKEOFF MINIMUMS

Rwys 13, 17, 31, 35: Standard.



DEPARTURE ROUTE DESCRIPTION

TAKEOFF RUNWAY 13: Climb on heading 128° or as assigned by ATC, for vectors to WRKIT, thence . . .

TAKEOFF RUNWAY 17: Climb on heading 173° or as assigned by ATC, for vectors to WRKIT, thence . . .

TAKEOFF RUNWAY 31: Climb on heading 308° or as assigned by ATC, for vectors to WRKIT, thence . . .

TAKEOFF RUNWAY 35: Climb on heading 353° or as assigned by ATC, for vectors to WRKIT, thence . . .

. . . on track 080° to CHURN, then on track 085° to SNIDR, then on transition. Maintain ATC assigned altitude.

BLUMS TRANSITION (SNDR1.BLUMS)

CAAGE TRANSITION (SNDR1.CAAGE)

FFSSH TRANSITION (SNDR1.FFSSH)

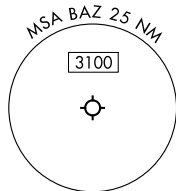
MOLLR TRANSITION (SNDR1.MOLLR)

SEEDS TRANSITION (SNDR1.SEEDS)

WEMAR TRANSITION (SNDR1.WEMAR)

WHAEL TRANSITION (SNDR1.WHAEL)

WYLSN TRANSITION (SNDR1.WYLSN)



Note: Chart not to scale.

NEW BRAUNFELS, TEXAS
NEW BRAUNFELS NTL (BAZ)

(SNDR1.SNDR) 24025
SNDR ONE DEPARTURE (RNAV)

AL-6080 (FAA)

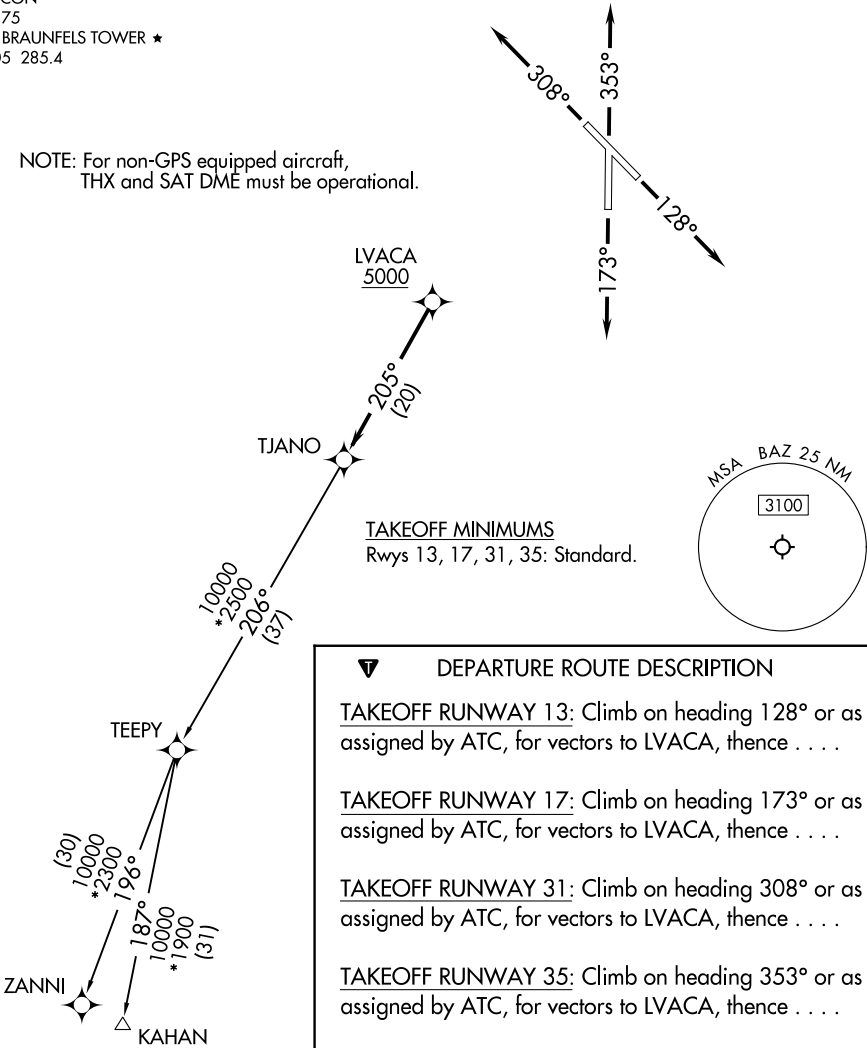
NEW BRAUNFELS NTL (BAZ)
NEW BRAUNFELS, TEXAS

SAN ANTONIO DEP CON
128.05 290.225
ATIS
119.325
CLNC DEL
134.75
GND CON
120.175
NEW BRAUNFELS TOWER ★
127.05 285.4

RNAV 1 - DME/DME IRU or GPS.
RADAR required.

**TOP ALTITUDE:
ASSIGNED BY ATC**

NOTE: For non-GPS equipped aircraft,
THX and SAT DME must be operational.



DEPARTURE ROUTE DESCRIPTION

TAKEOFF RUNWAY 13: Climb on heading 128° or as assigned by ATC, for vectors to LVACA, thence . . .

TAKEOFF RUNWAY 17: Climb on heading 173° or as assigned by ATC, for vectors to LVACA, thence . . .

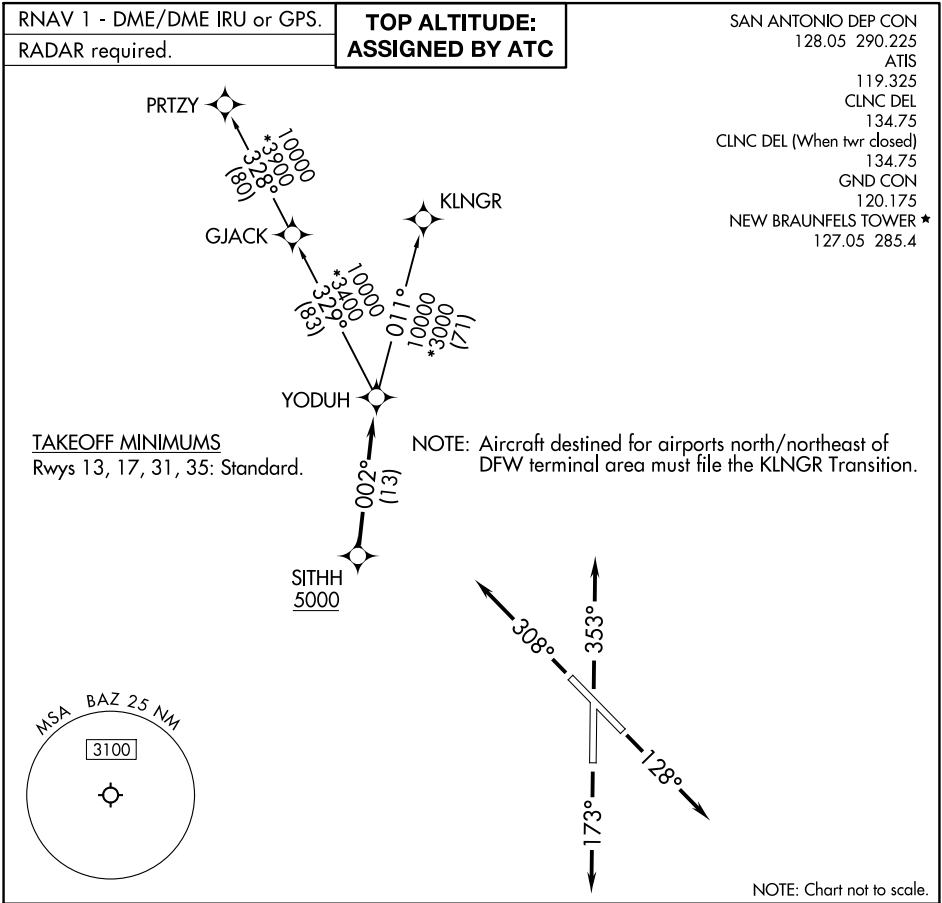
TAKEOFF RUNWAY 31: Climb on heading 308° or as assigned by ATC, for vectors to LVACA, thence . . .

TAKEOFF RUNWAY 35: Climb on heading 353° or as assigned by ATC, for vectors to LVACA, thence . . .

. . . on track 205° to TJANO, then on Transition.
Maintain ATC assigned altitude.

KAHAN TRANSITION (TJANO1.KAHAN)
ZANNI TRANSITION (TJANO1.ZANNI)

Note: Chart not to scale.



DEPARTURE ROUTE DESCRIPTION

TAKEOFF RUNWAY 13: Climb on heading 128° or as assigned by ATC, for vectors to SITHH, thence . . .

TAKEOFF RUNWAY 17: Climb on heading 173° or as assigned by ATC, for vectors to SITHH, thence . . .

TAKEOFF RUNWAY 31: Climb on heading 308° or as assigned by ATC, for vectors to SITHH, thence . . .

TAKEOFF RUNWAY 35: Climb on heading 353° or as assigned by ATC, for vectors to SITHH, thence . . .

. . . on track 002° to YODUH, then on Transition. Maintain ATC assigned altitude.

KLNGR TRANSITION (YODUH1.KLNGR)

PRTZY TRANSITION (YODUH1.PRTZY)