

APP CRS
095°
 Rwy Idg **3844**
 TDZE **154**
 Apt Elev **160**

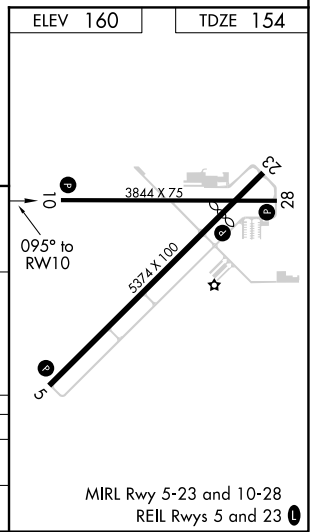
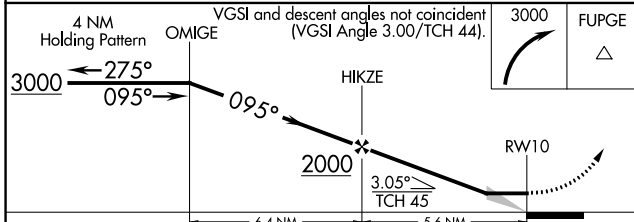
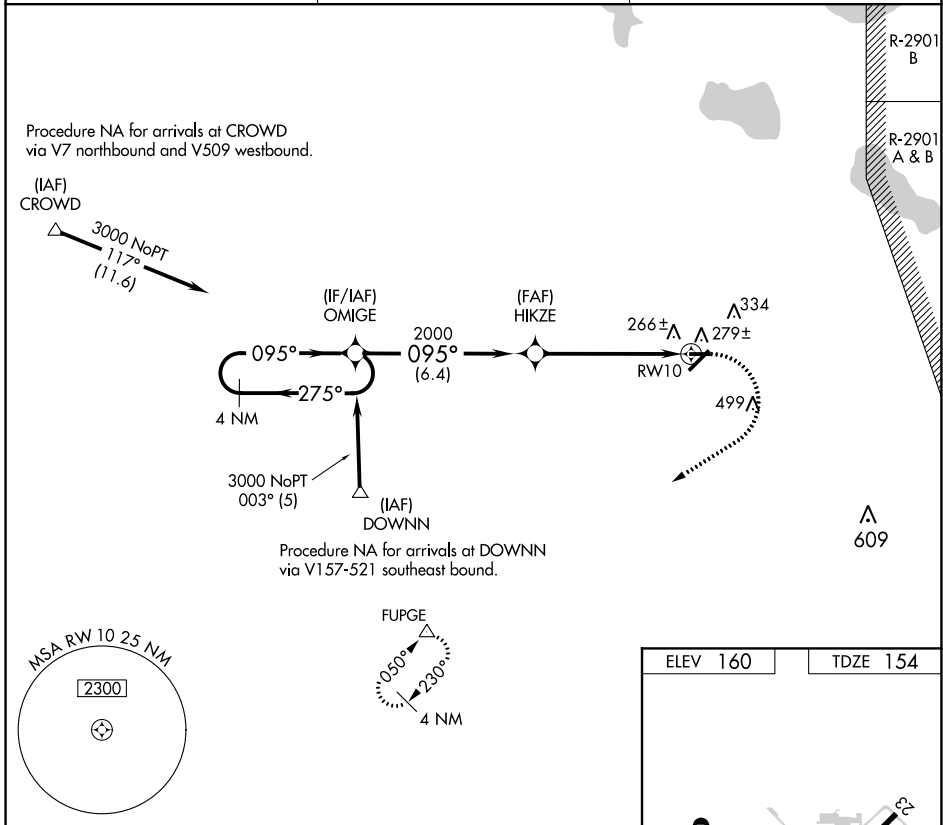
RNAV (GPS) RWY 10

AVON PARK EXEC (AVO)

⚠ DME/DME RNP-0.3 NA. Rwy 5,10,23,28 helicopter visibility reduction below
NA 1 SM NA. When local altimeter setting not received, use Orlando Intl altimeter setting; increase all MDA 140 feet. Procedure NA at night.

MISSED APPROACH: Climbing right turn 3000 direct FUPGE and hold.

AWOS-3 **118.725** MIAMI CENTER ★ **134.55 257.7** UNICOM **122.8** (CTAF) **0**



CATEGORY	A	B	C	D
LNVA MDA	640-1	486 (500-1)		NA
CIRCLING	680-1 520 (600-1)	840-1 680 (700-1)		NA

SE-3, 22 FEB 2024 to 21 MAR 2024

SE-3, 22 FEB 2024 to 21 MAR 2024

WAAS CH 86716 W05A	APP CRS 050°	Rwy Idg TDZE Apt Elev	5374 160 160
--	------------------------	-----------------------------	---

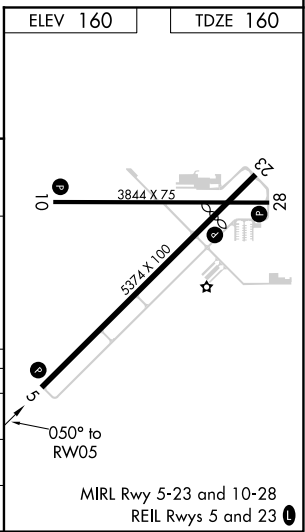
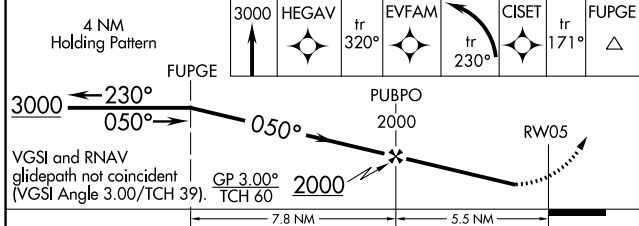
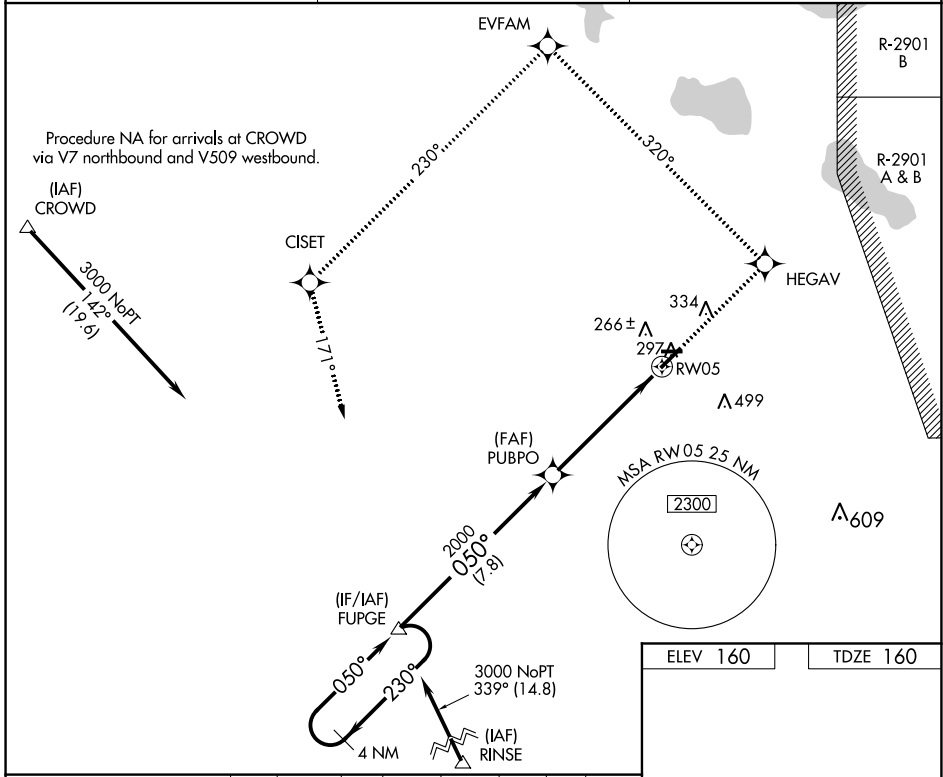
RNAV (GPS) RWY 5

AVON PARK EXEC (AVO)

NA DME/DME RNP-0.3 NA. Rwy 5, 10, 23, 28, helicopter visibility reduction below 1 SM NA. When local altimeter setting not received, use Orlando Intl altimeter setting; increase DA to 578 feet and visibility Cat A/B ½ mile. Increase all MDA 140 feet. Procedure NA at night.

MISSED APPROACH: Climb to 3000 direct HEGAV and via track 320° to EVFAM and left turn via track 230° to CISET and via track 171° to HOLD.

AWOS-3 118.725	MIAMI CENTER ★ 134.55 257.7	UNICOM 122.8 (CTAF) 0
--------------------------	---------------------------------------	---------------------------------



CATEGORY	A	B	C	D
LPV DA	450-1	290 (300-1)		NA
LNAV MDA	540-1	380 (400-1)		NA
CIRCLING	680-1 520 (600-1)	840-1 680 (700-1)		NA

SE-3, 22 FEB 2024 to 21 MAR 2024

SE-3, 22 FEB 2024 to 21 MAR 2024