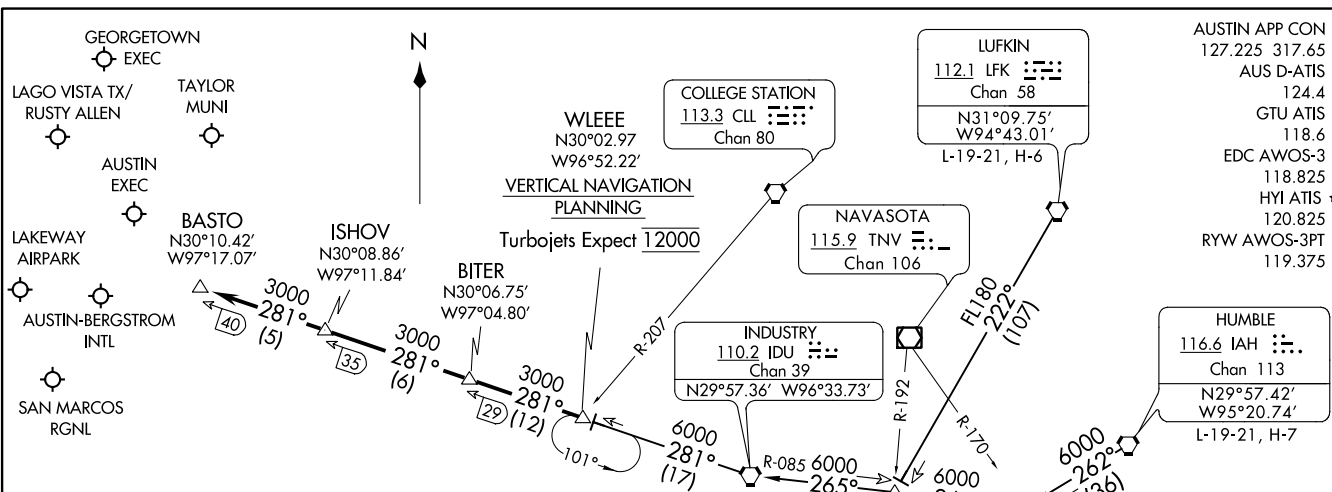


BITER NINE ARRIVAL  
(WLEEE.BITER9) 25APR19



**VERTICAL NAVIGATION PLANNING**  
Turbojets Expect 12000

**ARRIVAL ROUTE DESCRIPTION**

**HUMBLE TRANSITION (IAH.BITER9):** From over IAH VORTAC on IAH R-262 to SHYNR INT, then on IDU R-085 to IDU VORTAC, then on IDU R-281 to WLEEE INT. Thence . . . .

**INDUSTRY TRANSITION (IDU.BITER9):** From over IDU VORTAC on IDU R-281 to WLEEE INT. Thence . . . .

**LUFKIN TRANSITION (LFK.BITER9):** From over LFK VORTAC on LFK R-222 to BOCCK INT, then on IDU R-085 to IDU VORTAC, then on IDU R-281 to WLEEE INT. Thence . . . .

. . . . From over WLEEE on IDU R-281 to BITER, then on IDU R-281 to ISHOV, then on IDU R-281 to BASTO. Expect vectors to final approach course at or prior to BASTO.

- NOTE: RADAR required.
- NOTE: DME required.
- NOTE: DME/DME/IRU or GPS equipped aircraft must file the WLEEE (RNAV) or POTRR (RNAV) STAR.

NOTE: Chart not to scale.

(WLEEE.BITER9) 22195  
BITER NINE ARRIVAL

AL-556 (FAA)

AUSTIN, TEXAS

AUSTIN, TEXAS

- AUSTIN APP CON 127.225 317.65
- AUS D-ATIS 124.4
- GTU ATIS 118.6
- EDC AWOS-3 118.825
- HYI ATIS \* 120.825
- RYW AWOS-3PT 119.375

**HUMBLE**  
116.6 IAH : : :  
Chan 113  
N29°57.42' W95°20.74'  
L-19-21, H-7

**LUFKIN**  
112.1 LFK : : : :  
Chan 58  
N31°09.75' W94°43.01'  
L-19-21, H-6

**NAVASOTA**  
115.9 TNV : : : -  
Chan 106

**COLLEGE STATION**  
113.3 CLL : : : :  
Chan 80

**INDUSTRY**  
110.2 IDU : : : :  
Chan 39  
N29°57.36' W96°33.73'

**BASTO**  
N30°10.42' W97°17.07'

**ISHOV**  
N30°08.86' W97°11.84'

**BITER**  
N30°06.75' W97°04.80'

**GEORGETOWN EXEC**

**LAGO VISTA TX/ RUSTY ALLEN**

**TAYLOR MUNI**

**AUSTIN EXEC**

**LAKEWAY AIRPARK**


**AUSTIN-BERGSTROM INTL**


**SAN MARCOS RGNL**


# BLEWE FIVE ARRIVAL

AUSTIN, TEXAS

AUSTIN APP CON  
127.225 317.65  
AUS D-ATIS  
124.4  
EDC AWOS-3  
118.825  
HYI ATIS \*  
120.825  
RYW AWOS-3PT  
119.375

WACO  
115.3 ACT   
Chan 100  
N31°39.73'-W97°16.14'  
L-19, H-6

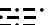
MAVERICK  
113.1 TTT   
Chan 78

GOOCH SPRINGS  
112.5 AGJ   
Chan 72

WINDU  
N31°31.83'  
W97°04.95'  
H-6

BLEWE  
N31°12.46'  
W97°12.54'

SEWZY  
N30°48.80'  
W97°21.74'  
VERTICAL NAVIGATION  
PLANNING  
Expect 13000

CENTEX  
112.8 CWK   
Chan 75  
N30°22.71'-W97°31.79'

LAGO VISTA TX/  
RUSTY ALLEN

LAKEWAY  
AIRPARK

AUSTIN-BERGSTROM  
INTL

SAN MARCOS RGNL

NOTE: RADAR required.  
NOTE: DME required.

NOTE: Chart not to scale.

## ARRIVAL ROUTE DESCRIPTION

WACO TRANSITION (ACT.BLEWE5): From over ACT VORTAC on ACT R-165 to BLEWE. Thence . . .

WINDU TRANSITION (WINDU.BLEWE5): From over WINDU on CWK R-012 to BLEWE. Thence . . .

. . . From over BLEWE on CWK R-012 to SEWZY, then on CWK R-012 to CWK VORTAC. Expect vectors to final approach course at or prior to CWK VORTAC.

SC-3, 22 FEB 2024 to 21 MAR 2024

SC-3, 22 FEB 2024 to 21 MAR 2024

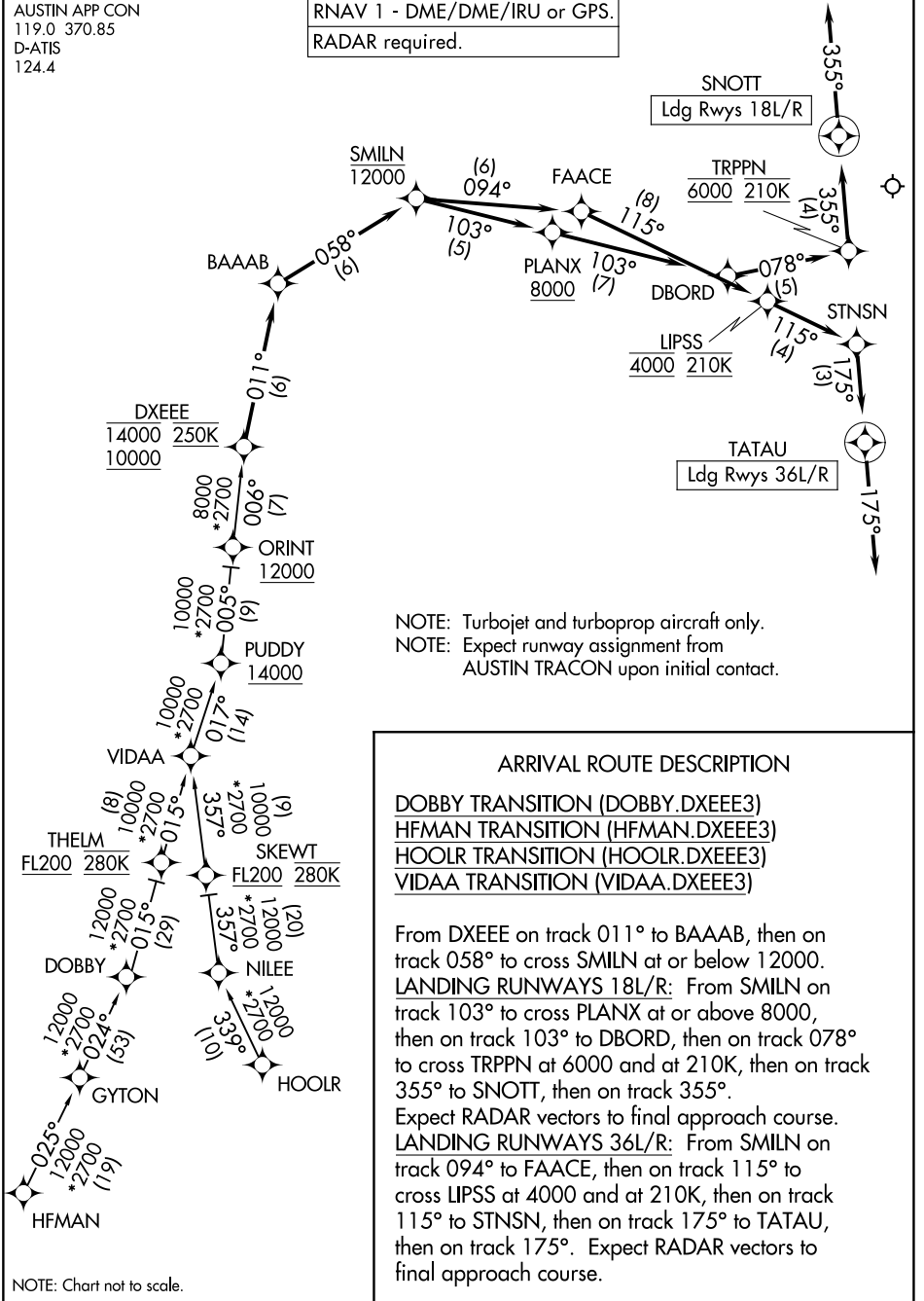
# BLEWE FIVE ARRIVAL

AUSTIN, TEXAS

**DXEE THREE ARRIVAL (RNAV)**

AUSTIN APP CON  
119.0 370.85  
D-ATIS  
124.4

RNAV 1 - DME/DME/IRU or GPS.  
RADAR required.



**ARRIVAL ROUTE DESCRIPTION**

DOBBY TRANSITION (DOBBY.DXEE3)  
HFMAN TRANSITION (HFMAN.DXEE3)  
HOOLR TRANSITION (HOOLR.DXEE3)  
VIDAA TRANSITION (VIDAA.DXEE3)

From DXEE on track 011° to BAAAB, then on track 058° to cross SMILN at or below 12000. LANDING RUNWAYS 18L/R: From SMILN on track 103° to cross PLANX at or above 8000, then on track 103° to DBORD, then on track 078° to cross TRPPN at 6000 and at 210K, then on track 355° to SNOTT, then on track 355°.

Expect RADAR vectors to final approach course. LANDING RUNWAYS 36L/R: From SMILN on track 094° to FAACE, then on track 115° to cross LIPSS at 4000 and at 210K, then on track 115° to STNSN, then on track 175° to TATAU, then on track 175°. Expect RADAR vectors to final approach course.

NOTE: Chart not to scale.

SC-3, 22 FEB 2024 to 21 MAR 2024

SC-3, 22 FEB 2024 to 21 MAR 2024

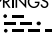
(KALLA.KALLA4) 22195


AL-556 (FAA)

# KALLA FOUR ARRIVAL

AUSTIN, TEXAS

AUSTIN APP CON  
119.0 370.85  
AUS D-ATIS  
124.4  
GTU ATIS  
118.6

GOOCH SPRINGS  
112.5 AGJ   
Chan 72

LLANO  
108.2 LLO   
Chan 19  
N30°47.78'-W98°47.24'  
L-19, H-6

4100  
089°  
(37)


KALLA  
N30°43.26'  
W98°04.64'  
10000

GEORGETOWN  
EXEC 

120°  
(35)

LAKEWAY  
AIRPARK 

Ldg KAUS, KGTU, K3R9

CENTEX  
112.8 CWK   
Chan 75  
N30°22.71'-W97°31.79'

10000

AUSTIN-BERGSTROM INTL 

NOTE: RADAR required.

NOTE: DME/DME/IRU or GPS equipped turbojet  
and turboprop aircraft landing KAUS must  
file the LAIKS (RNAV) STAR.

NOTE: Chart not to scale.

## ARRIVAL ROUTE DESCRIPTION

LLANO TRANSITION (LLO.KALLA4): From over LLO VORTAC on LLO R-089  
to KALLA. Thence . . . .

. . . . from over KALLA on CWK R-300 to cross CWK VORTAC at 10000.  
Expect vectors to final approach course.

KALLA FOUR ARRIVAL  
(KALLA.KALLA4) 15AUG19

AUSTIN, TEXAS

SC-3, 22 FEB 2024 to 21 MAR 2024

SC-3, 22 FEB 2024 to 21 MAR 2024

AUSTIN APP CON  
119.0 370.85  
D-ATIS  
124.4

(LAIKS.LAIKS3) 2111Z  
LAIKS THREE ARRIVAL (RNAV)

AL-556 (FAA)

AUSTIN-BERGSTROM INTL (AUS)  
AUSTIN, TEXAS

LAIKS THREE ARRIVAL (RNAV)  
(LAIKS.LAIKS3) 22APR21

AUSTIN-BERGSTROM INTL (AUS)  
AUSTIN, TEXAS

UCOKA

10000  
111°  
(74)

DILLO

10000  
093°  
(18)

SZAGI

10000  
110°  
(16)

BOYZZ  
11000

LAIKS  
14000  
10000

111°  
(12)

126°  
(7)

CRLOS  
5000

150°  
(9)

126°  
(6)

TRVSS  
10000  
8000

HOUKM  
5000 210K

150°  
(13)

RATT  
6000 220K

175°  
(6)

LAIDY  
5000 210K

175°

NOTE: RADAR required.  
NOTE: RNAV 1.  
NOTE: DME/DME/IRU or GPS required.  
NOTE: Turbojet and turboprop aircraft only.  
NOTE: Expect Rwy assignment from AUSTIN TRACON upon initial contact.

ARRIVAL ROUTE DESCRIPTION

DILLO TRANSITION (DILLO.LAIKS3)  
UCOKA TRANSITION (UCOKA.LAIKS3)

From LAIKS on track 111° to cross BOYZZ at or below 11000.

LANDING RUNWAYS 18L/R: From BOYZZ on track 126° to cross CRLOS at 5000, then on track 126° to cross HOUKM at 5000 and at 210K. Expect ILS or LOC or RNAV (RNP) approach, or RADAR vectors to final approach course.

LANDING RUNWAYS 36L/R: From BOYZZ on track 150° to cross TRVSS between 8000 and 10000, then on track 150° to cross RATT at or above 6000 and at 220K, then on track 175° to cross LAIDY at 5000 and at 210K, then on track 175°. Expect RNAV (RNP) approach, or RADAR vectors to final approach course.



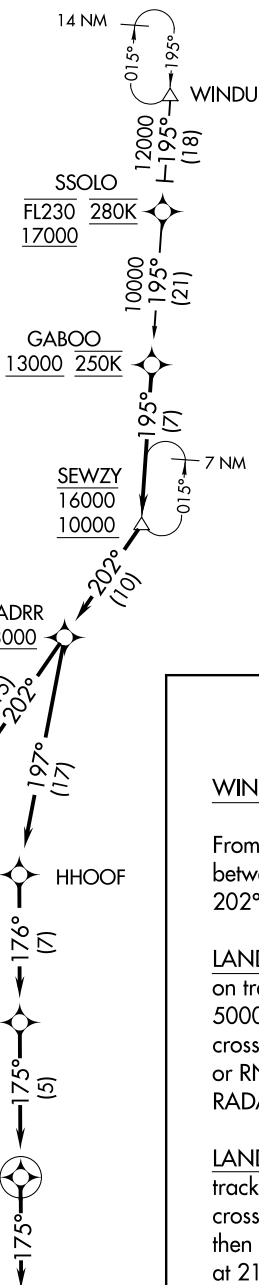
NOTE: Chart not to scale.

(GABOO.SEWZY6) 21112  
**SEWZY SIX ARRIVAL (RNAV)**

AL-556 (FAA)

AUSTIN-BERGSTROM INTL (AUS)  
 AUSTIN, TEXAS

AUSTIN APP CON  
 127.225 317.65  
 D-ATIS  
 124.4



NOTE: RADAR required.  
 NOTE: RNAV 1.  
 NOTE: DME/DME/IRU or GPS required.  
 NOTE: Turbojet and turboprop aircraft only.  
 NOTE: Expect rwy assignment from AUSTIN TRACON upon initial contact.

**ARRIVAL ROUTE DESCRIPTION**

WINDU TRANSITION (WINDU.SEWZY6)

From GABOO on track 195° to cross SEWZY between 10000 and 16000, then on track 202° to cross VADRR at or above 8000.

LANDING RUNWAYS 18L/R: From VADRR on track 202° to cross MGTEC at or above 5000 and at 220K, then on track 221° to cross JEDYE at 4000 and at 210K. Expect ILS or RNAV (RNP) RWY 18L/R approach or RADAR vectors to final approach course.

LANDING RUNWAYS 36L/R: From VADRR on track 197° to HHOOF, then on track 176° to cross MMARE at or above 6000 and at 220K, then on track 175° to cross SMRFF at 5000 and at 210K, then on track 175°. Expect RADAR vectors to final approach course.

NOTE: Chart not to scale.

**SEWZY SIX ARRIVAL (RNAV)**  
 (GABOO.SEWZY6) 22APR21

AUSTIN, TEXAS  
 AUSTIN-BERGSTROM INTL (AUS)

SC-3, 22 FEB 2024 to 21 MAR 2024

SC-3, 22 FEB 2024 to 21 MAR 2024

RNAV 1 - DME/DME/IRU or GPS.

RADAR required.

AUSTIN APP CON  
127.225 317.65  
D-ATIS  
124.4

NOTE: Turbojet and turboprop aircraft only.  
NOTE: MNURE Transition for Houston terminal departures only.  
NOTE: Expect runway assignment from AUSTIN TRACON upon initial contact.

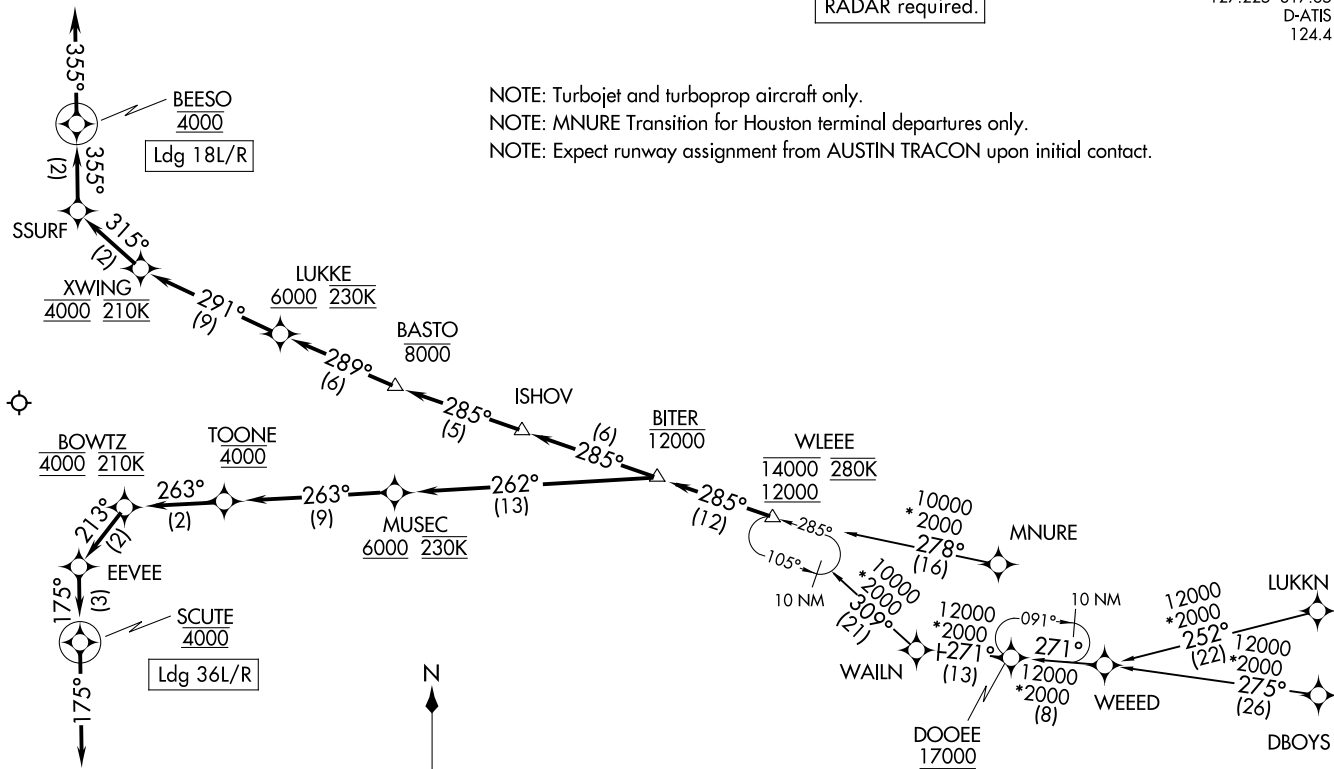
WLEEE SEVEN ARRIVAL (RNAV)  
(WLEEE, WLEEE7) 14JUL22

AUSTIN, TEXAS  
AUSTIN-BERGSTROM INTL (AUS)

(WLEEE, WLEEE7) 22195  
WLEEE SEVEN ARRIVAL (RNAV)

AL-556 (FAA)

AUSTIN-BERGSTROM INTL (AUS)  
AUSTIN, TEXAS



ARRIVAL ROUTE DESCRIPTION

DBOYS TRANSITION (DBOYS.WLEEE7)

LUKKN TRANSITION (LUKKN.WLEEE7)

MNURE TRANSITION (MNURE.WLEEE7)

WAILN TRANSITION (WAILN.WLEEE7)

WEEED TRANSITION (WEEED.WLEEE7)

From WLEEE on track 285° to cross BITER at or below 12000.

LANDING RUNWAYS 18L/R: From BITER on track 285° to ISHOV, then on track 285° to cross BASTO at or below 8000, then on track 289° to cross LUKKE at or above 6000 and at 230K, then on track 291° to cross XWING at 4000 and at 210K, then on track 315° to SSURF, then on track 355° to cross BEESO at 4000, then on track 355°. Expect RADAR vectors to final approach course.

LANDING RUNWAYS 36L/R: From BITER on track 262° to cross MUSEC at or above 6000 and at 230K, then on track 263° to cross TOONE at 4000, then on track 263° to cross BOWTZ at 4000 and at 210K, then on track 213° to EEVEE, then on track 175° to cross SCUTE at 4000, then on track 175°. Expect RADAR vectors to final approach course.

SC-3, 22 FEB 2024 to 21 MAR 2024

SC-3, 22 FEB 2024 to 21 MAR 2024