

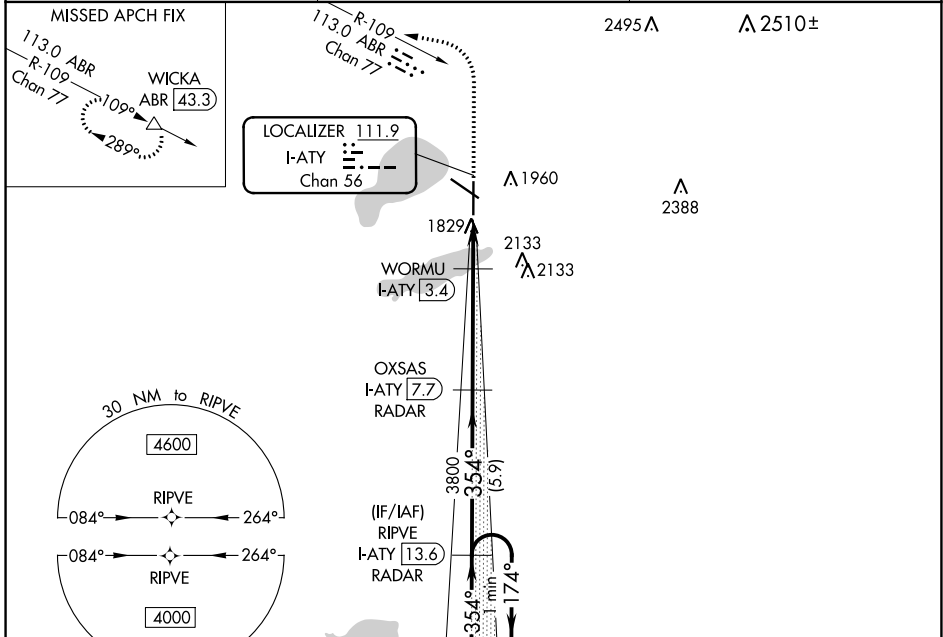
LOC/DME I-ATY 111.9 Chan 56	APP CRS 354°	Rwy Idg 6893 TDZE 1745 Apt Elev 1749
---	------------------------	---

ILS or LOC RWY 35

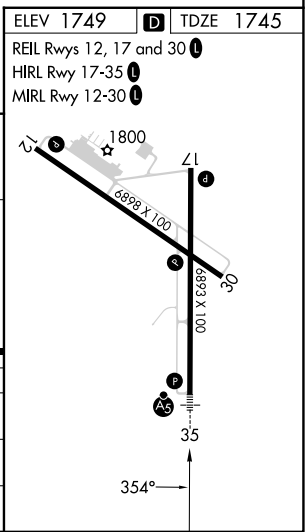
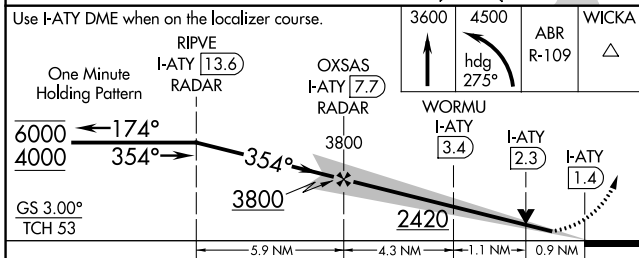
WATERTOWN RGNL (ATY)

RNAV 1-GPS or RADAR required for procedure entry. DME required. MALSR MISSED APPROACH: Climb to 3600 then climbing left turn to 4500 on heading 275° and ABR R-109 to WICKA/ABR 43.3 DME and hold.

ASOS 126.625	MINNEAPOLIS CENTER 128.5 306.2	UNICOM 123.05 (CTAF) 0
------------------------	--	----------------------------------



ELEV 1749	TDZE 1745
REIL Rwy 12, 17 and 30	
HIRL Rwy 17-35	
MIRL Rwy 12-30	



CATEGORY	A	B	C	D
S-ILS 35	1945-1/2		200 (200-1/2)	
S-LOC 35	2080-1/2		335 (400-1/2)	
CIRCLING	2260-1 511 (600-1)		2500-2 1/4 751 (800-2 1/4)	2500-2 1/2 751 (800-2 1/2)

NC-1, 22 FEB 2024 to 21 MAR 2024

NC-1, 22 FEB 2024 to 21 MAR 2024

WAAS CH 53405 W12A	APP CRS 118°	Rwy Idg TDZE 1749 Apt Elev 1749	6898
--	------------------------	---	-------------

RNAV (GPS) RWY 12

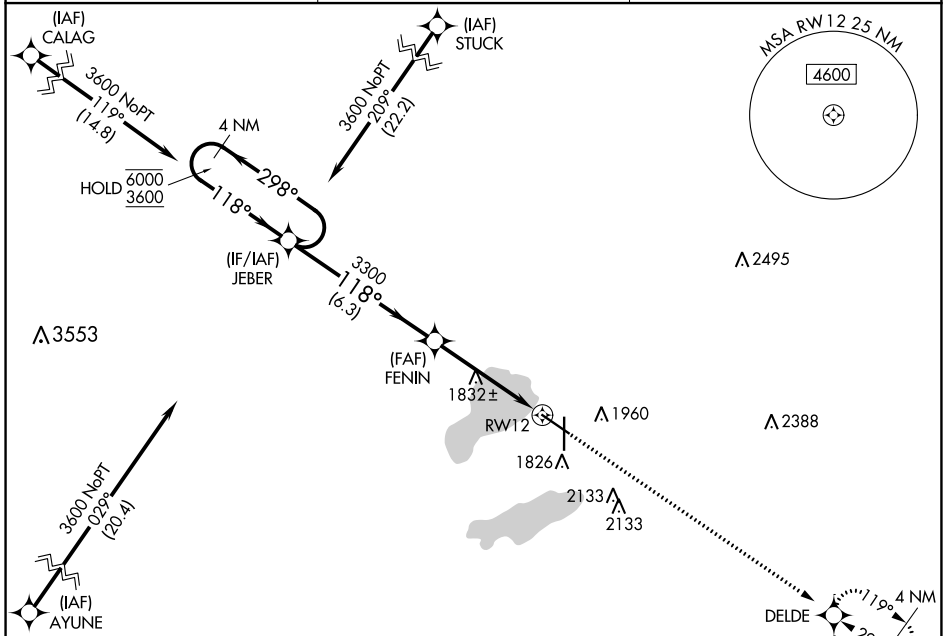
WATERTOWN RGNL (ATY)

RNP APCH - GPS.

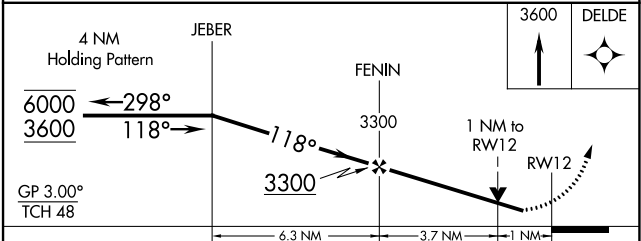
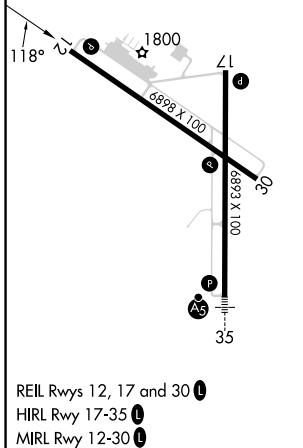
▼ Rwy 12 helicopter visibility reduction below ¾ SM NA.
 ▲ For uncompensated Baro-VNAV systems, LNAV/VNAV NA below -18°C or above 54°C.

MISSED APPROACH: Climb to 3600 direct DELDE and hold.

ASOS 126.625	MINNEAPOLIS CENTER 128.5 306.2	UNICOM 123.05 (CTAF) 0
------------------------	--	----------------------------------



ELEV 1749	D TDZE 1749
-----------	-------------



CATEGORY	A	B	C	D
LPV DA		2021-7/8	272 (300-7/8)	
LNAV/VNAV DA		2076-1	327 (400-1)	
LNAV MDA		2100-1	351 (400-1)	
C CIRCLING	2260-1	511 (600-1)	2500-2¼ 751 (800-2¼)	2500-2½ 751 (800-2½)

NC-1, 22 FEB 2024 to 21 MAR 2024

NC-1, 22 FEB 2024 to 21 MAR 2024

WAAS CH 82305 W17A	APP CRS 174°	Rwy Idg TDZE Apt Elev	6893 1741 1749
--	------------------------	-----------------------------	---

RNAV (GPS) RWY 17

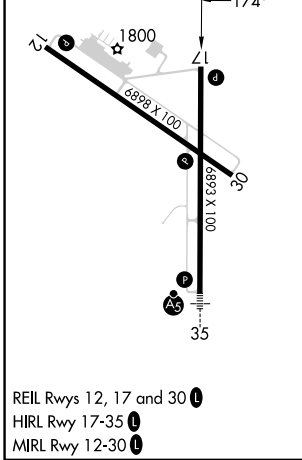
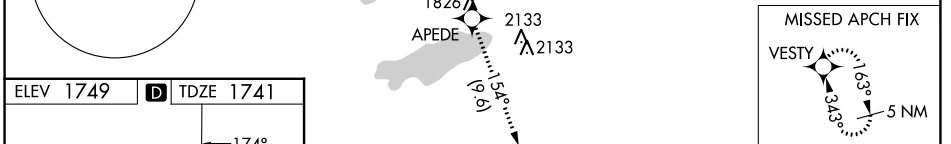
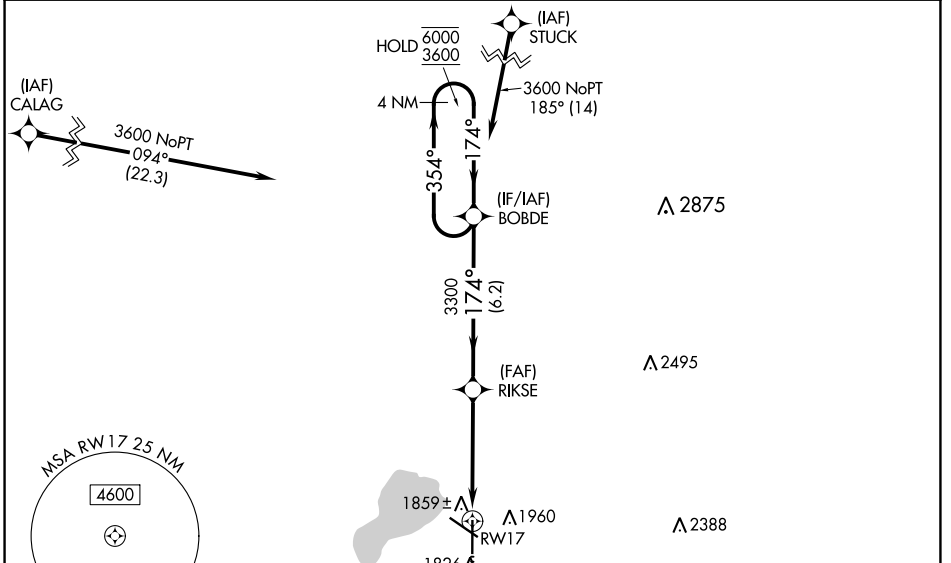
WATERTOWN RGNL (ATY)

RNP APCH - GPS.

⚠ For uncompensated Baro-VNAV systems, LNAV/VNAV NA below -18°C or above 54°C.

MISSED APPROACH: Climb to 4000 direct APEDE and on track 154° to VESTY and hold.

ASOS 126.625	MINNEAPOLIS CENTER 128.5 306.2	UNICOM 123.05 (CTAF) 0
------------------------	--	----------------------------------



ELEV 1749	D TDZE 1741			
4000	APEDE	tr 154°	VESTY	VGSI and RNAV glidepath not coincident (VGSI Angle 3.00/TCH 35).
				BOBDE 4 NM Holding Pattern
				RIKSE 3300
				RW17 1.1 NM to RW17
				354° → 6000
				← 174° 3600
				GP 3.00° TCH 45
				1.1 NM 3.6 NM 6.2 NM
CATEGORY	A	B	C	D
LPV DA	2055-7/8 314 (400-7/8)			
LNAV/VNAV DA	2130-1 1/8 389 (400-1 1/8)			
LNAV MDA	2120-1 379 (400-1)			
C CIRCLING	2260-1 511 (600-1)	2500-2 1/4 751 (800-2 1/4)	2500-2 1/2 751 (800-2 1/2)	

NC-1, 22 FEB 2024 to 21 MAR 2024

NC-1, 22 FEB 2024 to 21 MAR 2024

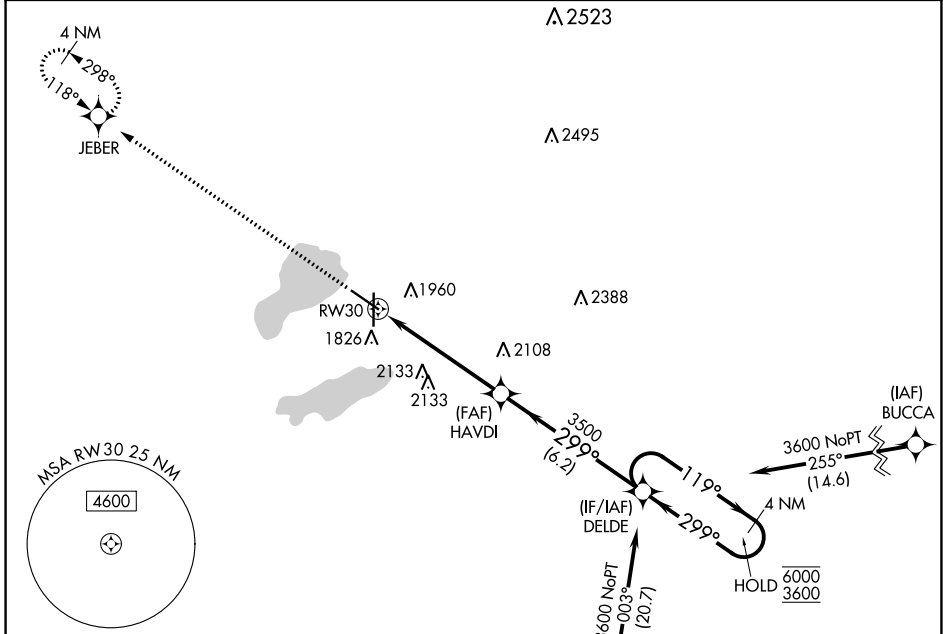
WAAS CH 50305 W30A	APP CRS 299°	Rwy Idg TDZE Apt Elev	6898 1735 1749
--	------------------------	-----------------------------	---

RNAV (GPS) RWY 30

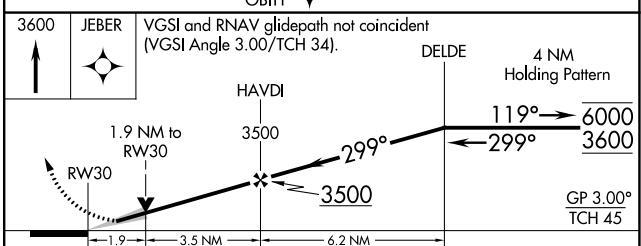
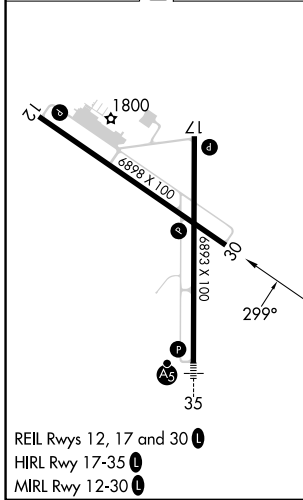
WATERTOWN RGNL (ATY)

RNP APCH - GPS.	MISSED APPROACH: Climb to 3600 direct JEBER and hold.
<p>▼ For uncompensated Baro-VNAV systems, LNAV/VNAV NA below -18°C or above 54°C.</p> <p>▲</p>	

ASOS 126.625	MINNEAPOLIS CENTER 128.5 306.2	UNICOM 123.05 (CTAF) 0
------------------------	--	----------------------------------



ELEV 1749	D	TDZE 1735
-----------	----------	-----------



CATEGORY	A	B	C	D
LPV DA	1989- ³ / ₄		254 (300- ³ / ₄)	
LNAV/VNAV DA	2210-1 ³ / ₈		475 (500-1 ³ / ₈)	
LNAV MDA	2360-1	625 (700-1)	2360-1 ³ / ₄	625 (700-1 ³ / ₄)
C CIRCLING	2360-1	611 (700-1)	2500-2 ¹ / ₄ 751 (800-2 ¹ / ₄)	2500-2 ¹ / ₂ 751 (800-2 ¹ / ₂)

NC-1, 22 FEB 2024 to 21 MAR 2024

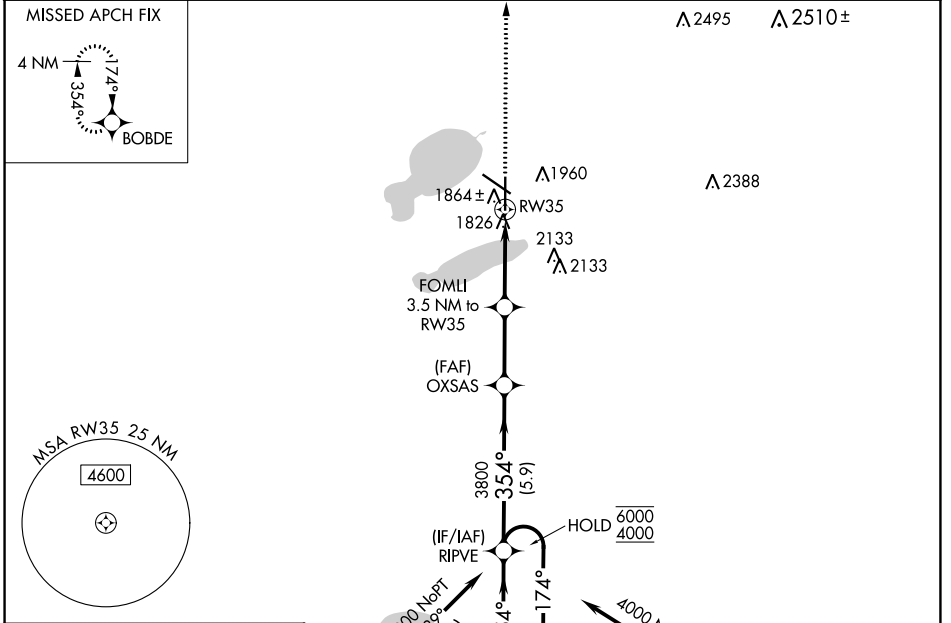
NC-1, 22 FEB 2024 to 21 MAR 2024

WAAS CH 82614 W35A	APP CRS 354°	Rwy Idg TDZE Apt Elev	6893 1745 1749
---------------------------------	------------------------	-----------------------------	---

RNAV (GPS) RWY 35

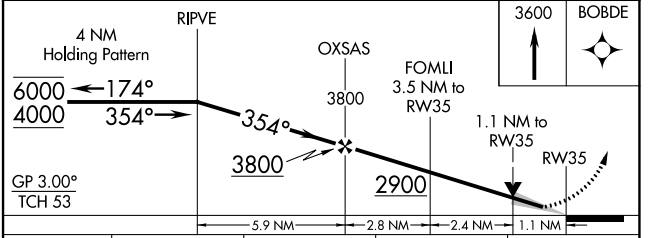
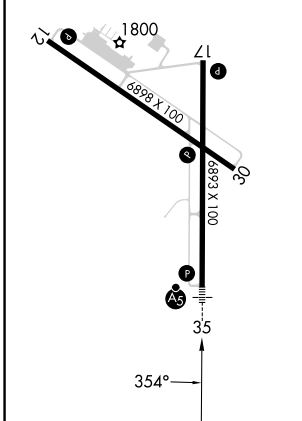
WATERTOWN RGNL (ATY)

RNP APCH - GPS.		MALSR	MISSED APPROACH: Climb to 3600 direct BOBDE and hold.
<p>▼ For uncompensated Baro-VNAV systems, LNAV/VNAV NA below -21°C or above 54°C. For inop ALS, increase LNAV Cat C/D visibility to 1½ SM.</p>			
ASOS 126.625	MINNEAPOLIS CENTER 128.5 306.2	UNICOM 123.05 (CTAF) 0	



ELEV 1749	D	TDZE 1745
-----------	----------	-----------

REIL Rwy 12, 17 and 30
 HIRL Rwy 17-35
 MIRL Rwy 12-30



CATEGORY	A	B	C	D
LPV DA		1945-½	200 (200-½)	
LNAV/VNAV DA		2180-¾	435 (500-¾)	
LNAV MDA	2160-½	415 (500-½)	2160-¾	415 (500-¾)
C CIRCLING	2260-1	511 (600-1)	2500-2¼ 751 (800-2¼)	2500-2½ 751 (800-2½)

NC-1, 22 FEB 2024 to 21 MAR 2024

NC-1, 22 FEB 2024 to 21 MAR 2024